



MAP
SHOWING LOCATION
OF
SNAPPER CREEK
CANAL

To be constructed by the Trustees of the Internal Improvement Fund, State of Florida.
Plans shown approved by
J. W. King, C.E.
Chief Drainage Engineer

R. 40 E.

Tp. 54 S.

34

35

Model Land Co	Model Land Co	W.E. Marsh Marsh Belcher	F.W. Kosel	Model and Co	F.W. Johnson	Model Land Co	Model Land Co
	Model Land Co			Kosel	F.W. Company	F.W. Kosel	R.W. Brown
SNAPPER CREEK CANAL				Model Land Co	Model Land Co	Kosel	

4000

Model Land Co

CREEK

SNAPPER

Model Land

R. 40 E.

35

36

FLA. C.R.R.

Model Land Co	Model Land Co	Model Land Co
F.W. Kosel	R.W. Brown	Harry A. Harshaw

F.E.C.R.R.	F.E.C.R.R.	F.E.C.R.R.	F.E.C.R.R.
F.W. Kosel	F.W. Kosel	M.T. Pappard	M.T. Pappard
F.E.C.R.R.	F.E.C.R.R.	F.E.C.R.R.	F.E.C.R.R.

CREEK

Model Land Company

Fla East Coast R.R.

SNAPPER

Snapper Cree

R. 41 E.

31

TP. 54 S.

32

R.R.

F.E.C. RR

Snapper Creek

ER

R. 41 E.

TP. 54 S.

32



LARKIN

4000

SNAPPER CREEK CANAL

Model Land co

Kosel
Model
Land Co.

F. W.
Kosel

Company
Kosel

F. W.

F. W.

Model Land Co

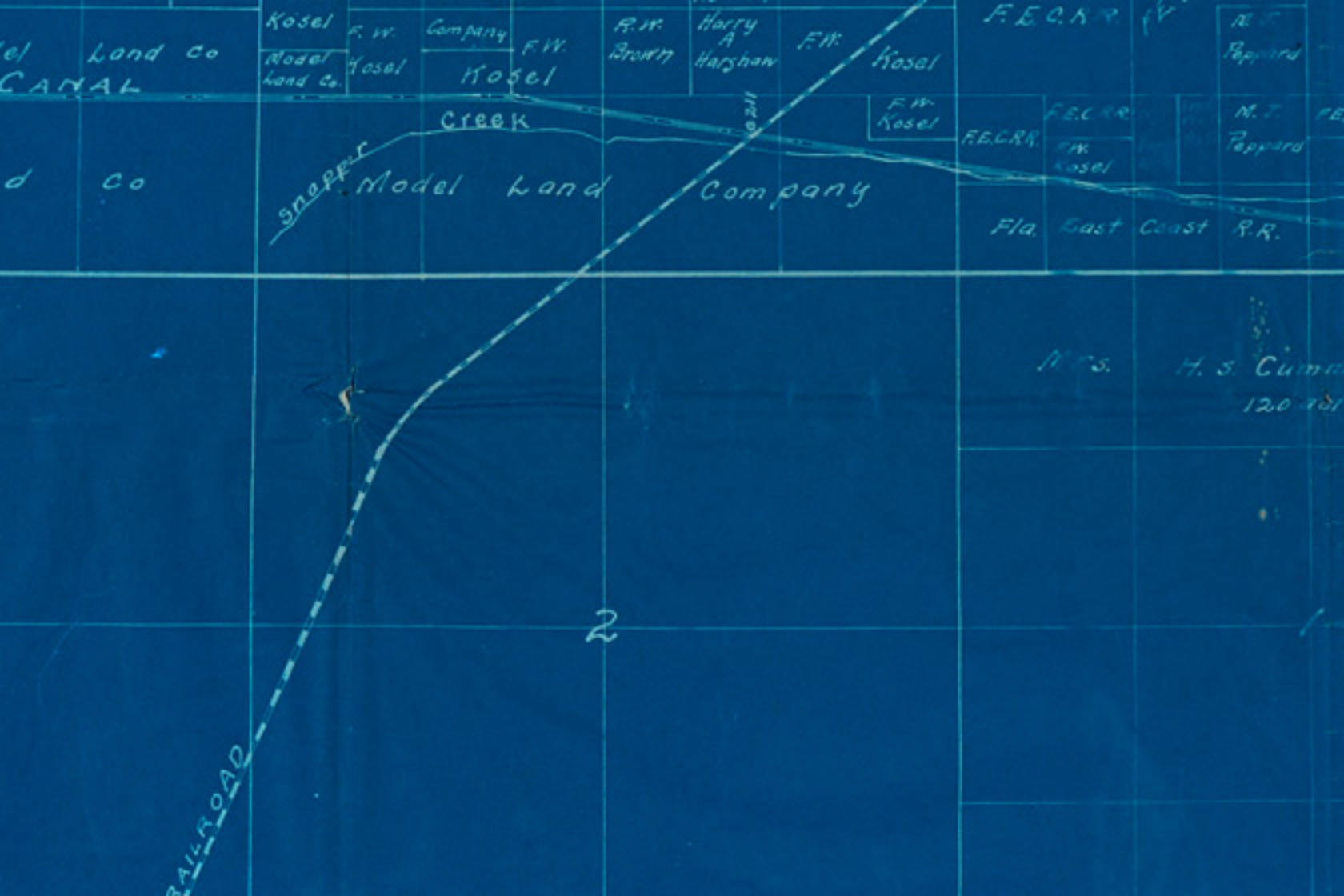
snapper Creek
Model Land

TP. 55 S.

3

2

RAILROAD



Model Land Co
CANAL

Kosel F.W. Company F.W. R.W. Harry A. Harshaw F.W. Kosel
Model Land Co. Kosel

F.E.C.R.R. M.T. Peppard

d co

Snapper Creek
Model Land Company

F.W. Kosel F.E.C.R.R. F.W. Kosel F.E.C.R.R. M.T. Peppard
Fla. East Coast R.R.

Mrs. H. S. Cummins
120 431

2

RAILROAD

F.E.C.R.R. IV

M.T.

Peppard

C.R.R.

F.E.C.R.R.

M.T.

F.E.C.R.R.

F.E.C. R.R.

F.E.C. R.R.

Fla. East Coast R.R.

Peppard

R.R.

Snapper

Creek

SNAPPER

CREEK

144

Mrs.

H. S. Cummings

120 98105

The

The

CANAL

Avocado

Avocado

117

Land

Land

Co.

Dr. Chas.

M

Co.

6

Road

Road

ek

Reed

Tr. 555.



FLA. EAST COAST RAILROAD

10

11



Wallace
30 acres

Sec. 8

Flats

ado Land Co

ado Land Co
mi Fla.

Mangrove

BAY

YNE

15

Land

Cutler
40 acres

Dr. Chas. M.
Cutler
20 A

Co

The

Avocado

Land

Co.

SNAPPER CREEK
SNAPPER CREEK CADD

J. W. Ewan
80 acres

The
Avocado Land Co.

13

18

Marsh



B I S C A Y N E

Sanford Jan 3, 1913.

M A P
SHOWING LOCATION
OF
SNAPPER CREEK
CANAL

15

14

14

13

J. H. Linn
80 acres

Avocado Land Co.

13

18

Salt

Marsh

To be con
Imp
Route

ccado Land Co.

HAL
an

B 15

Sandford Fla 3, 1915.

M A P
SHOWING LOCATION
OF
SNAPPER CREEK
CANAL

To be constructed by the Trustees of the Internal
Improvement Fund, State of Florida.

Route shown approved by

J. A. Wright

Chief Drainage Engineer.

Marsh

ccado Land Co.

HAL
an

B 15

Sandford Fla 3, 1915.

M A P
SHOWING LOCATION
OF
SNAPPER CREEK
CANAL

To be constructed by the Trustees of the Internal
Improvement Fund, State of Florida.

Route shown approved by

J. A. Wright

Chief Drainage Engineer.

Marsh