

THIS BOOK IS THE PROPERTY
OF THE
CITY OF MIAMI BEACH

and is being placed in the custody of the Miami Beach Public Library
to be carefully preserved by them so that our citizens and visitors,
throughout the years to come, may be able to properly appreciate this
combination of the work of God and Man, which is

MIAMI BEACH

John H. Leri
Councilman
Barnes Hirsch Meyer
Councilman
Wm. Burbidge
Councilman
C. W. Domlin
City Clerk

Val C. Cleary
Mayor
Harold C. Smith
Councilman
Russel Kalsbe
Councilman
W. L. Wilson
Councilman

AUGUST, 1941

58-6222

MIAMI BEACH
PUBLIC LIBRARY

M I A M I B E A C H S T A T I S T I C S

Collected by CLAUDE C. MATLACK

John S. Collins first came to Miami in 1896. In 1907 Mr. Collins bought out Ezra Osborn, leaving Elnatham T. Field as his associate. In 1907 and 1908 Mr. Collins planted 2,945 avocado trees. In 1909 Mr. Collins bought out Mr. Field. Mr. Collins now owned 1,670 acres, four and one-half miles along the ocean and one mile on Biscayne Bay. In 1911 a transportation problem was solved by digging the Collins Canal from Pancoast Lake to Biscayne Bay. In July, 1912, the Collins Bridge was started and opened June 12, 1913. Costing \$100,000.00, it was two and one-half miles long, the longest wooden bridge in existence at the time. When the bridge was seven years old it was sold to the Biscayne Bay Improvement Association, December, 1920. The Venetian Islands were then developed and opened to travel March 1, 1926.

Smith's Casino, South Beach—Dick Smith acquired land and built a bathing pavilion. With no transportation for the public, the enterprise proved a failure. 1908—Avery C. Smith (no relation to Dick Smith) bought the property and started a ferry with two specially built boats. These ran on regular schedule for seventeen years. The Collins Bridge ruined the ferry business but the larger crowds made the bath house business better. Avery C. Smith remained with his enterprise until 1925, when he sold out.

1912-13—Carl G. Fisher became interested in Miami Beach. His first investment was the help he gave to finish the Collins Bridge, for which he received bonds and a strip of land 1,800 feet wide from the ocean to the bay.

He then acquired additional land. His holdings were known as Alton Beach.

As his interest in the development grew, he and his associates developed the entire west side of Miami Beach and the islands to the north; also the Pine Tree Drive and LaGorce Drive section.

Besides building hotels, the gardens, golf clubs and courses, polo fields and backing the boat races, he did many other things to advertise and promote Miami Beach. Carl Graham Fisher died 1939.

1913—The Miami Beach Bathing Pavilion, 23rd and the ocean, was built by the Miami Beach Improvement Co. It was bought and rebuilt by Carl G. Fisher, the improvements costing \$350,000.00, and has been known as the Miami Beach Casino, Casino St. Johns, the Roman Pools and now the Everglades Cabana Club.

1915 (March 26)—Miami Beach was incorporated as a town. Two years later, May 1, 1917, it was incorporated as a city with J. N. Lummus the first mayor.

1916—The Lincoln Hotel, the first large hotel on Miami Beach, was built by Carl G. Fisher. It was sold and torn down in 1940 to be replaced by a larger hotel.

Dates of acts authorizing work on the Government Cut and Channel across Biscayne Bay:

June 13, 1902—An 18-foot channel 100 feet wide in a land cut across the peninsula and construction of the north jetty.

March 2, 1907—Construction of the south jetty and for a channel width of 100 feet.

July 25, 1912—Enlarging the channel to 20-foot depth and 300-foot width, and extending the jetties.

March 3, 1925—Deepening the channel to 25 feet, mean low water, with present project widths at the entrance and a width of 200 feet across Biscayne Bay.

July 3, 1930—A channel width of 300 feet across the bay and enlarging the municipal basin, with the expenditures thereon limited to \$200,000.00.

August 30, 1935—A depth of 30 feet from the ocean to and in the turning basin,

with the existing authorized project widths, included the 300-foot width in the channel across the bay.

August 26, 1937—Extending the turning basin 200 feet to the southward.

1917—The annual Regatta was started by Carl G. Fisher.

County Causeway—March, 1917, work was started. Construction stopped during the war. The causeway was opened February 17, 1920.

1920—Street car line was started. Cars ran up Washington Avenue to Dade Boulevard to Alton Road and back to causeway and to Miami.

Street cars were replaced with buses in 1939.

June 13, 1920—The Miami Beach Chamber of Commerce was organized with Thomas J. Pancoast as president and he has succeeded himself. C. W. Chase, Sr., was secretary. The Chamber of Commerce moved into its permanent home, corner Fifth Street and Alton Road, 1921.

1920—The Miami Beach Dairy was in operation on 41st Street near Chase Avenue.

The Miami Light and Power Co. supplied Miami Beach with electric current until Carl G. Fisher built the plant on the causeway in 1920.

This plant was taken over by the Florida Power and Light Co. in 1924.

1921—Carl, the baby elephant, arrived.

1922—The Miami Beach First National Bank opened with \$336,703.00 in deposits.

Fisher's wall at 15th Street was the northern limits of Miami Beach. North of this wall was Alton Beach.

Collins' original 1,670 acres extended north from 14th Street to Archway Villas.

Collins' farm buildings were at 41st Street and Sheridan Avenue.

1918—Miami Beach Bay Shore Co. was formed to develop the northwest portion of Miami Beach.

1924—The Fleetwood Hotel installed the first broadcasting station for Miami Beach, WMBF, "Wonderful Miami Beach, Florida."

January, 1926—WIOD, "Wonderful Isle of Dreams" broadcasting station, was built on Collins Island at the Nautilus Hotel, with Mr. Jesse Jay at its head.

January 11, 1925—The steel ship, Prinz Valdemar turned over, blocking the channel to Miami completely. 72 vessels were blocked inside and 62 were riding at anchor outside.

1920—The Flamingo Hotel was built by Mr. Fisher. Chas. Crum was manager.

1920—The polo fields south of Lincoln Road were opened; in 1923 were moved opposite the Nautilus Hotel, and in 1936 were subdivided into lots.

1923—The Nautilus Hotel was built by Mr. Fisher.

January, 1924—The Pancoast Hotel opened.

1924—The King Cole Hotel was built by Mr. Fisher.

1925—The Roney Plaza Hotel built by N. B. T. Roney.

December, 1926—The Miami Beach Woman's Club was organized with Mrs. Clayton S. Cooper the first president, the second, Mrs. B. M. Boykin, and then Mrs. T. J. Pancoast, who has succeeded herself. The club building was started in June and opened in November, 1933.

1925—Lions Club was organized.

1926—The Allison Hospital was built by James A. Allison and in April, 1929, was taken over as the St. Francis Hospital.

M I A M I B E A C H S T A T I S T I C S

Collected by CLAUDE C. MATLACK

In 1926 the Committee of 100 was suggested and named by Claude C. Matlack. After the idea was approved by Mr. Carl G. Fisher and James A. Allison. Mr. C. W. (Pete) Chase, Jr., called a meeting and organized the Committee of 100 at Mr. Allison's home on Star Island. Mr. Clayton S. Cooper was elected chairman.

February 7, 1929—Miami Beach Rod and Reel Club was organized by C. W. Chase, Sr., secretary of the Chamber of Commerce. First members as of February 21, 1929: Charles W. Chase, Sr., Mrs. F. C. Zu Solms, Miss Sally Farrier, James P. Hall, J. Ira Gore, George S. Krom, James Eustis, R. M. Erdmans, Benjamin E. Farrier, Charles Pease, Claude C. Matlack, John H. Waters, Charles A. Sargeant. Regular officers elected March 4, 1929: President, Benjamin E. Farrier; first vice-president, Hugh Larrick; second vice-president, Robert Clow; secretary-treasurer, C. W. Chase, Sr.

First meetings held in Chamber of Commerce Building and occasionally in Nautical Hotel.

Moved into Purdy Avenue location December 2, 1929.

Moved into larger clubhouse on Purdy Avenue November 13, 1931.

Moved to Hibiscus Island May 9, 1934.

1917 and 1918—Star Island was filled from the bay bottom by the Miami Ocean View Co., John Levi, president.

1918—The Miami Beach Yacht Club was built on Star Island by Miami Ocean View Co., and was bought in 1925 by Col. E. H. R. Green for his home.

1926—The stage and projection booth were built and the playgrounds started in Flamingo Park under the direction of Publicity and Advertising Committee of the Chamber of Commerce, C. W. Chase, Jr., chairman.

Permanent Population—	
1920	644
1925	3,569
1930	6,494
1935	13,330
1940	27,353

Assessed Valuation—

1915	\$ 224,000.00
1920	3,933,700.00
1925	44,094,950.00
1930	49,174,070.00
1935	40,811,661.00
1940	64,537,860.00

Bank Deposits—

1921	\$ 336,703.00
1926	4,952,382.00
1930	3,718,487.00
1935	11,179,872.00
1939	16,704,177.00

Public School Enrollment—

1921	157
1925	691
1930	1,818
1935	2,924
1940	3,800

Postal Receipts—

1921	No Record
1926	\$ 73,175.00
1930	90,804.00
1935	178,287.00
1939	387,844.00

Number of Telephones—

1921	551
1926	4,955
1930	8,042
1935	11,322
1940 (June)	26,183

Electric Light and Power Records—

1921	1,166,600 Kilowatt Hours
1925	10,800,000 Kilowatt Hours
1930	11,108,365 Kilowatt Hours
1935	7,215 Consumers
1939	11,872 Consumers

Water Consumed—

1921	30,000,000 Gallons
1926	723,000,000 Gallons
1926—A pipeline was laid across the causeway and the Miami Water Co. took over the supplying of water for Miami Beach.	
1930	803,566,700 Gallons
1935	1,090,810,200 Gallons
1939	1,981,683,000 Gallons

Harbor Tonnage and Value of Cargo—

Year	Tonnage	Cargo Value
1922	206,280	\$ 8,349,376
1923	776,394	18,893,001
1924	1,105,616	35,366,331
1925	2,664,472	84,349,553

The pictures and art work in this Album are the property of the Matlack Studio and their reproduction in whole or part without consent is strictly forbidden.

Use this list on and after December 28, 1920. Many numbers in Miami Beach are changed. Paste this over page 39 of your directory.

SOUTH ATLANTIC TELEPHONE AND TELEGRAPH COMPANY BEACH EXCHANGE, MIAMI BEACH, FLA.

Service between Miami and Miami Beach is on a TOLL BASIS. Charges—10c each way for three minutes; overtime, 3c per minute.

To Miami Subscribers: TO REACH MIAMI BEACH, CALL "UNIVERSAL." GIVE HER YOUR NUMBER AND THE MIAMI BEACH NUMBER YOU WANT, as this will result in the fastest service. If desired, calls may be made also by name and number. Calls will be handled by name only. If you do not know the telephone number of the person you wish to reach at Miami Beach, obtain the number from "Information" before giving the call to "Universal."

A

Alton Beach Realty Co, office Lincoln Rd
and Miami Ave M. B. 331
Alton Beach Realty Co, repr shop Lenox
Ave and 15th St M. B. 412

B

Bastian, Harry S, res 1808 James St M. B. 451
Beach Realty Co, office Fisher's Casino M. B. 851
Belle Isle Improvement Co, Belle Isle M. B. 403
Breakers Hotel, office Collins Ave and 24th
St M. B. 463
Breakers Hotel, pay station Collins Ave and
24th St M. B. 370
Bridge Inn, pay station Dade Blvd and West
Ave M. B. 404
Brogdon C E, res 215 Michigan Ave M. B. 425
Brooks Paul A, res 34th St and Collins Ave M. B. 707
Brown W E, office 1106 Lincoln Rd M. B. 416
Brown W E, res 626 Collins Ave M. B. 426
Burton J H, res 43rd St and Collins Ave M. B. 730

C

City of Miami Beach, city hall 6th St and
Collins Ave M. B. 612
Coachman R A, res Collins Ave M. B. 452
Collins John S, res Collins Ave M. B. 711

D

De Garmo W C, res 8th and Ocean Drive M. B. 801
De Leon Leon, rest pay sta Hardie's Casino M. B. 372
Dickey Frank, res 61 Miami Ave M. B. 812
Dickinson Theo, res 3603 Indian Drive M. B. 702
Duckwall H R, res 18th and Ocean Drive M. B. 613

E

Edwards Dr F M, res Lincoln Rd and Bay M. B. 405
El Mar Apts, pay sta 21 St and Collins Av M. B. 380

F

Fire Department, 6th and Collins Dr M. B. 321
Fisher Carl G, res Lincoln Rd and Ocean M. B. 326
Fisher's Dairy Farm, 41st and Prairie Ave M. B. 417
Flamingo Hotel, Alton Rd and Bay M. B. 311
Flamingo Real Estate Co, office Biscayne
Ave and Ocean Dr M. B. 531
Floyd C B, res 1600 Lenox Ave M. B. 431

G

Groub Thos C, res 1315 Collins Ave M. B. 505
Gulf Refining Co, 10 Jefferson St M. B. 339

H

Hardie's Casino, pay sta Ocean Dr M. B. 373
Hassler Robt H, res 1428 Drexel Ave M. B. 821
Henning Frank H, res 2307 Pinetree Rd M. B. 668
Hibiscus Apts, pay sta Collins Ave M. B. 378
Hodges Wm R, res 900 Ocean Drive M. B. 822

K

Kotcher Chas W, res Belle Isle M. B. 413

L

Levi John H, res Meridian and 5th St M. B. 761
Lincoln Hotel, Lincoln Rd and Miami Ave M. B. 341
Lummas J N, res 12th St and Ocean Dr M. B. 515

M

Matthews Jas F, res Belle Isle M. B. 421
Meloy Chas res 208 Alton Rd M. B. 723
Miami Aquarium Assn, 5th and Alton Rd M. B. 620
Miami Beach Baths, office 23rd and Collins M. B. 503
Miami Beach Elec Co, office Causeway M. B. 336
Miami Beach Garage, Meridian Ave and
1st St M. B. 705
Miami Beach Golf Club, pay sta Miami Ave
and Canal M. B. 375
Miami Beach Improvement Co, office 23rd
and Collins M. B. 433
Miami Beach Market, Lummas Bldg M. B. 813
Miami Bch Orchard, 41st and Pinetree Dr M. B. 407
Miami Grocery Co, branch 1102 Lincoln Rd M. B. 301
Miami Ocean View Co, office 5th St and
Alton Rd M. B. 334
Miami Beach Club, private office 23rd St
and Ocean M. B. 453
Miami Beach Club, pay sta for members use
23rd and Ocean M. B. 379

O

Ocean Side Inn, pay sta 23rd St M. B. 376
Olive Apts, pay sta 126 Ocean Dr M. B. 377

P

Pancoast J. Arthur, cottage 2905 Collins
Ave M. B. 714
Pancoast T J, res 26th St and Collins Ave M. B. 621
Pancoast T. J, cottage 2626 Collins Ave M. B. 622
Pugh Mrs A H, res 1315 Collins Ave M. B. 601

R

Ralston R W, res 1604 Miami Ave M. B. 521
Rook Lambert, real est Ocean Dr M. B. 611
Roome Walter C, 34th St and Ocean M. B. 722
Rumsey L. M, res Belle Isle M. B. 402

S

Sammons Alvin L, res 109 Miami Ave M. B. 511
Sanitary Fish Market, 727 Biscayne Ave M. B. 533
Schilling I E, warehouse Purdy Ave M. B. 353
Sebring O H, res Miami Ave M. B. 814
Shepard Ben, res 1612 Miami Ave M. B. 555
Smith Avery C, res 900 Collins Ave M. B. 484
Smith's Casino, pay sta Biscayne and
Ocean M. B. 381
Snedigar Louis F, res 1900 Collins Ave M. B. 514
Snowden Jas H, res Collins Ave and Ocean M. B. 721

T

Toledo Apts, pay sta 32 Collins Ave M. B. 382
Turner Huger, real est Hardie's Casino M. B. 604

U

United States Coast Guard Station, Collins
Ave and Atlantic Dr M. B. 713
U S Radio Station, 2311 Collins Ave M. B. 307

V

Van Deren F O, res 19th St and James M. B. 482

W

Walker F H, res 14th St and Ocean Dr M. B. 852
Warren Henry, res Inlet Blvd M. B. 815

H14

Foreword

My first visit to Florida and Miami Beach was in 1916.

I returned in the early part of 1917 to make Florida my home. In 1919 I built a studio on 23rd Street, Miami Beach, and occupied it for 13 years.

My studio was completely equipped for portrait and commercial photography, also a complete motion picture plant.

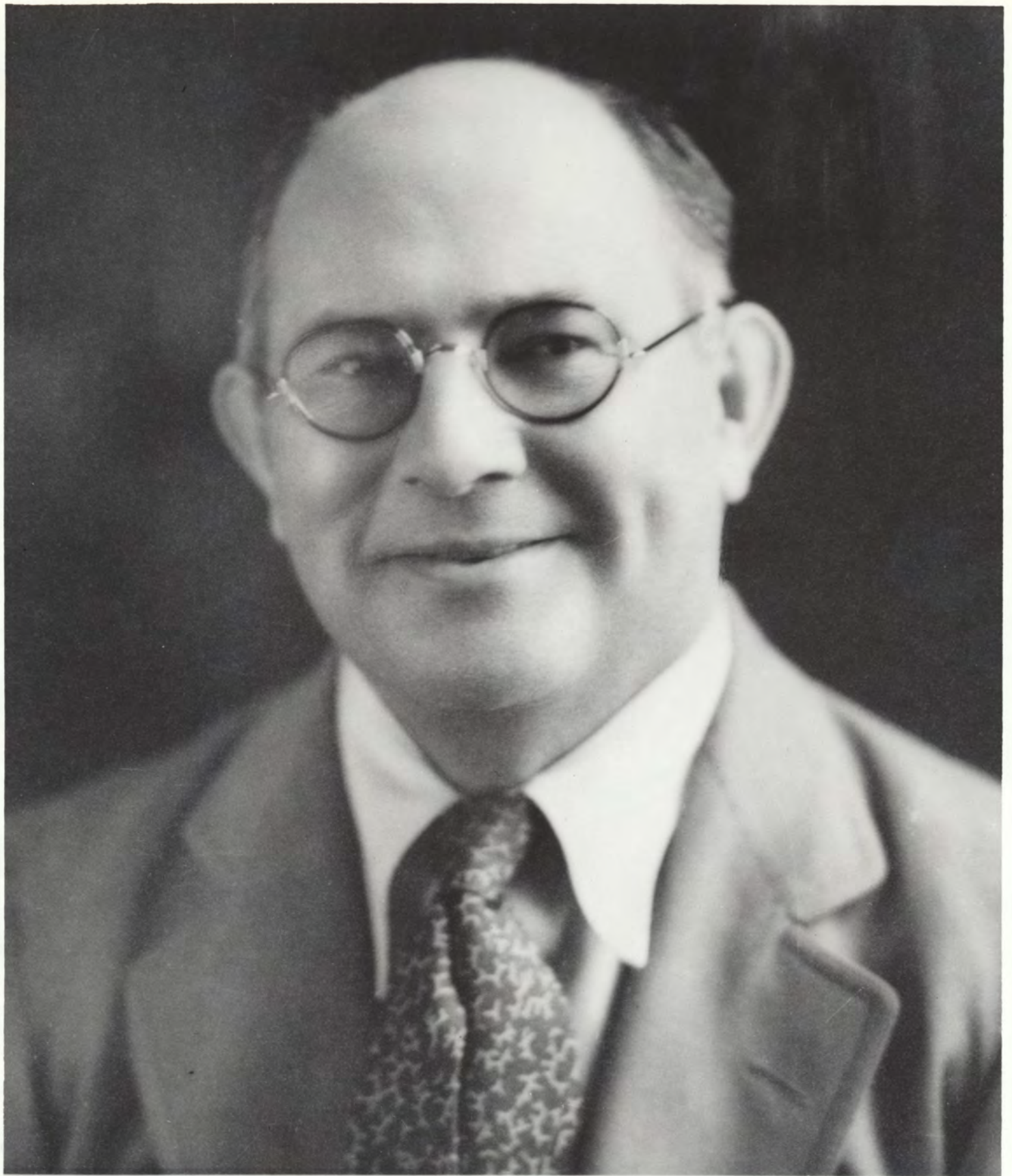
I served on the committee of the Chamber of Commerce which handled all the Miami Beach publicity and advertising until the spring of 1927, when the City Council took over this work.

This and other connections and the nature of my business took me all over Miami Beach as well as South Florida, enabling me to see and know what was going on.

Many of the pictures in this volume were made by me personally. The others were obtained from persons who had them made, therefore I can vouch for them being as represented.

—Claude C. Matlack.





1932—Carl G. Fisher.

Hi-5

staff photographer

MIAMI BEACH
TOURIST DEVELOPMENT AUTH.
Publicity Dept.



96-50 A Mangrove Forest extended along the entire bay front, on both sides of Indian Creek and was on all of the Islands.



53-27. Sept. 14, 1925—LaGorce golf course.

Hi - 7



257-12. 1912—Ocean beach property, now the location of
Lummas Park.



172-12. 1909—Pier where boats landed from Miami. Smith's Casino in the background.



Order No-331963 ims014

Fuji 2/21/2002



170-12. 1910—From Biscayne Street, looking north, where
Washington Avenue now is.



Order No-331963 ims017

Fuji 2/21/2002

166.12.2



221-12. 1913—Collins Canal at Meridian Avenue.



185-12 1913—Miami Beach Bathing Pavilion under construction. 23rd Street and Ocean.



223-12. June 12, 1913—Crate Bowen addresses Miamians at the official opening of Collins Bridge.



190-12 1914—Loading rock on train for road building. Collins Canal at Washington Ave.



226-12. 1914—The ocean front looking north from the wooden tower at the foot of Eighteenth Street.



241-12. 1914—Cook's suction dredge in Pancoast Lake.



219-12. 1914—Pine Tree Drive.

Hi-24



168-12. 1914—Collins Avenue, Pancoast Lake and the home of
Thomas J. Pancoast.

staff photographer

MIAMI BEACH
TOURIST DEVELOPMENT AUTH.
Publicity Dept.



234-12

234-12. 1914—The west side of Indian Creek.



224-12. 1915—Bathing Pavilion at Twenty-third Street and the ocean.



293-12 1916—Collins Canal looking East from Alton Road.



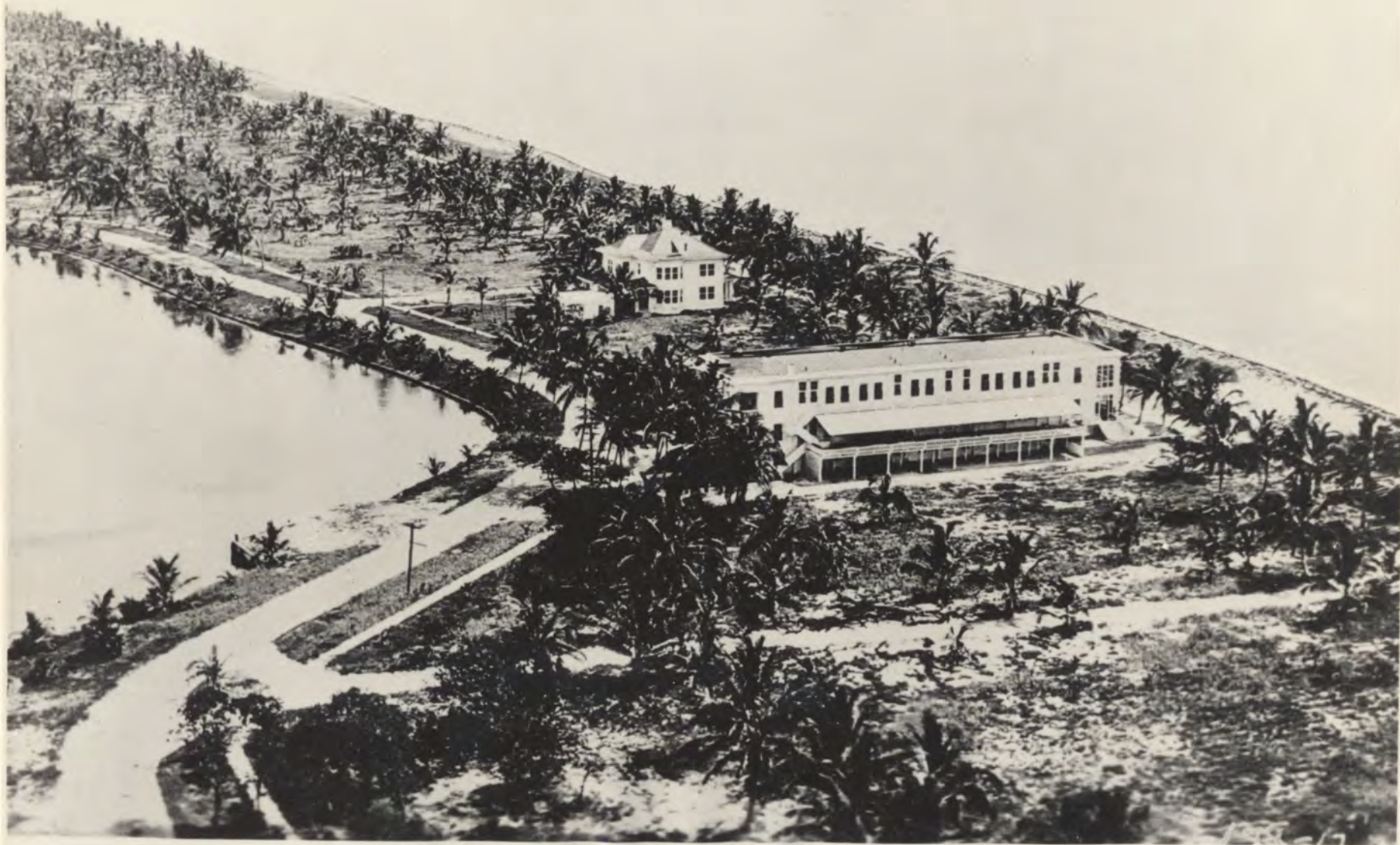


236-12. 1916—Pancoast Lake and the home of T. J. Pancoast.



120-13. July, 1923—Planting the first tree in the Nautilus Hotel grounds.

Hi-95



188 12. 1918 Pancoast Lake, the Breakers Hotel and John S.
Collins home.

Hi-34



6-A. The Roman Pools in 1918.

H1 - 35



197-12. 1918 - Twenty-third Street and Collins Canal, showing the I. E. Schilling building materials warehouse, with the golf course and undeveloped area in the background.



253-12. 1919—Alligator hole, which extended from Indian Creek nearly to the ocean drive, and only a few blocks north of the Firestone estate.



205-A. 1919—The southwest portion of Miami Beach and the county causeway.



222-14. 1919—Looking north on Collins Avenue from Fifteenth Street.

Hi - 40



90-A. 1919—County causeway, Palm and Star Islands and the south end of Miami Beach.

Hi-42



252-12. 1919—Indian Creek, a few blocks north of Pancoast Lake.



13-12. Christmas Day, 1919. Looking north, showing Hardie's Casino under construction.



22-A. 1919—Roman Pools, Twenty-third Street—the beginning of the Bay Shore development, showing Sunset Islands in background.



217-12. 1919—Bridge at Twenty-third Street and Collins Canal.
Barges with rock and sand, for building roads and
houses.



41-12. 1920—The Allison Aquarium, located at Fifth Street and the bay.

Hi-49



24-32. 1920—Miami Beach Dairy on Forty-first Street near Chase Avenue.

Hi-50



276A

276-A. 1920—The county causeway and power house, Star Island and the west side of Miami Beach.

HI-51



221-14. 1920 Collins Bridge.

Hi-52



16 12. 1920— Bay side, looking north from the roof of the Allison Aquarium, which was located on Fifth Street at the bay.



16-13. 1920—South across Fifth Street from the top of the Allison Aquarium.

Hi-56



19-12. 1920—Looking northeast across Miami Beach from the roof of the Allison Aquarium.

Hi 57



221-A. 1920—County causeway and northeast across Miami Beach.

H1-58



233-A. 1920—Hardie's and Smith's casinos.

Hi-60



22-13. 1920—The bulkhead under construction on the east side of Indian Creek, looking north from about Fiftieth Street.

Hi-61



257-A. 1920—North along the ocean front, with the present Lummus Park in the foreground.

Hi-62



19-13. 1920—A section through the mangrove forest in the north Bay Shore section during clearing operations.



9-13. 1920—Dredge pipes in position for filling the low ground at Forty-first Street. The building shown in the picture is the Miami Beach Dairy, which was located on Forty-first Street near Chase Avenue.



34-23. 1920—Regatta. Carl G. Fisher driving a speedboat.

Hi-66



3-13. 1920—Cutting down the mangrove forest in the Bay Shore section of Miami Beach, close to present location of Nautilus Hotel.

Hi - .68



4-13. 1920—The east side of Indian Creek at about Fiftieth Street. In the immediate foreground a ballistic station was located during the World War. The picture shows the mangrove forest cut down, ready for the fill, and in the distance a part of the retaining fill.

Hi-70



134-19. 1920—The first board of governors of the Miami Beach Chamber of Commerce.



126-34. 1920—Belle Isle and the Collins Bridge.

Hi-72



25-13. Sept. 13, 1920—East side of Indian Creek, about Fiftieth Street, showing the dredge at work on the fill.

Hi-71



271-A. 1920—Ocean side of Miami Beach, looking north from about First Street.

Mi-74



5-28. 1920—Elementary school on Washington Avenue.

Hi - 73



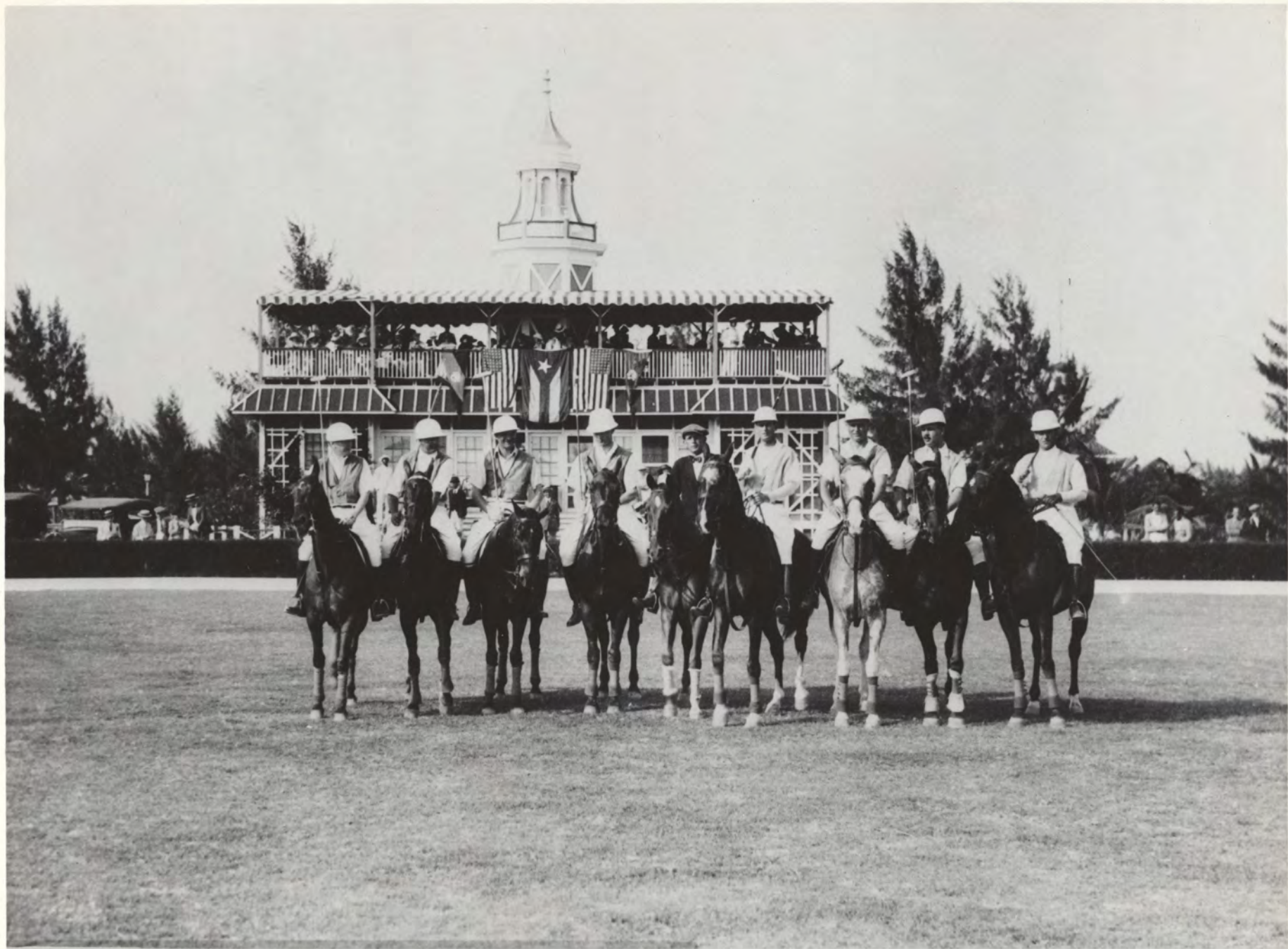
130-17. July 30, 1921—Pancoast Lake.

Hi-76



35-A. 1921—Star Island, the county causeway and Virginia Key.

Hi-75



44-25. Feb. 23, 1921—Cuban Army and American polo teams
in front of the polo clubhouse.



MIAMI BEACH
TOURIST DEVELOPMENT AUTH.
Publicity Dept.



83-12. 1921—The water tower on Star Island.

Hi-77



85-34. March 20, 1921—Looking north from the roof of the
Flamingo Hotel.

Hi-79



First cars to cross the Gullin Bridge on the official opening day June 12, 1913.

TP1 NR 40000 NNN 0 8478

<No. 25184>

25184



54-19. May 19, 1921—Chief of Police Brogdon and the police force.

Hi - 80



35-14. May 19, 1921—Looking east on Fifth Street from Alton Road.

Hi-82



86-34. March 20, 1921—Looking south from the roof of the Flamingo Hotel.



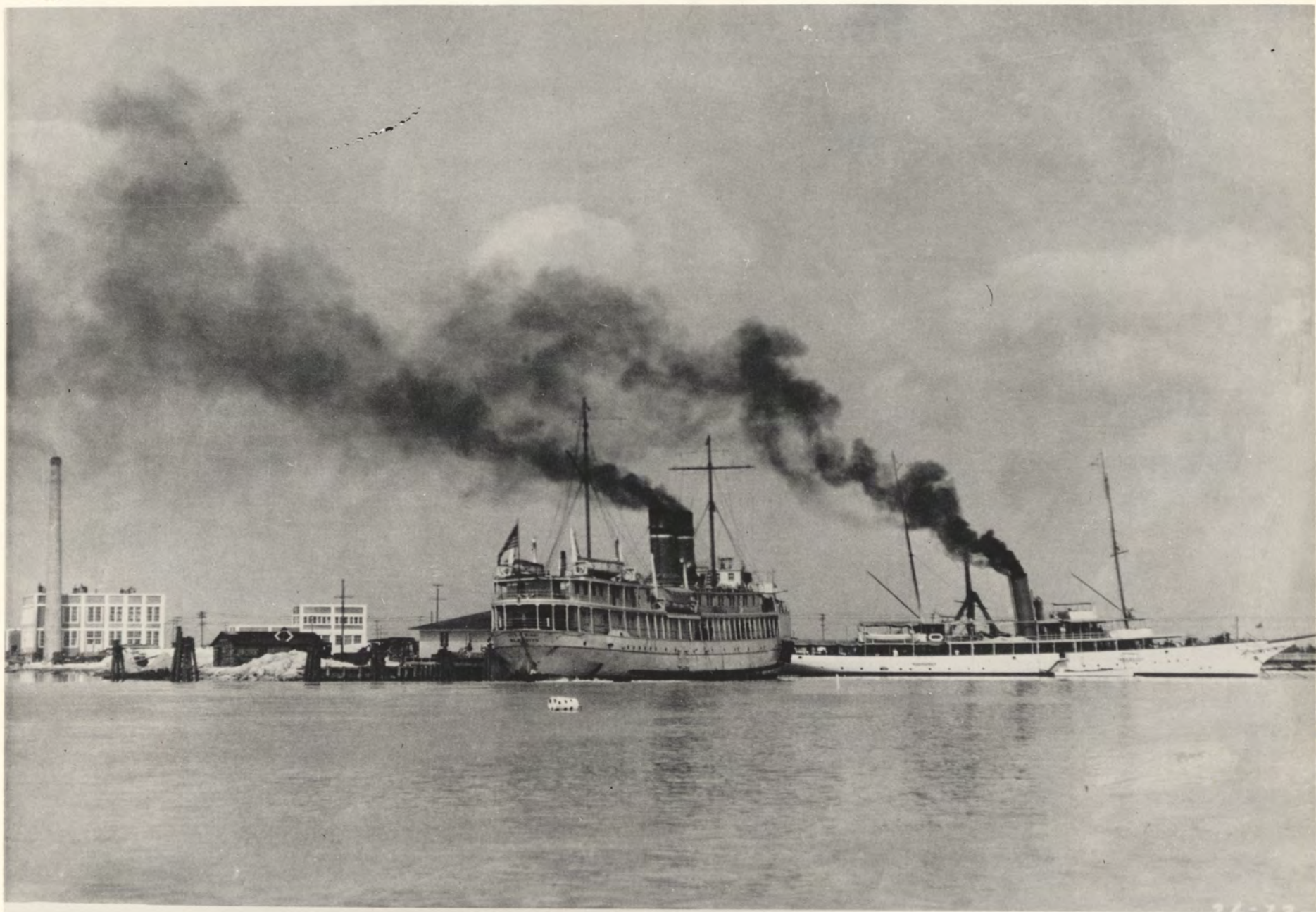
29-13. 1921—Filling and leveling back of sea wall.

Hi-84



1-15. May, 1921—Flagler memorial monument on the island
opposite the Flamingo Hotel.

Hi-86



26-22. Feb. 21, 1921—The Cuban steamship Hautey, the first ship to land at the docks by the power house. It brought a Cuban band and the polo players. The larger ship operated between Miami Beach and Havana.

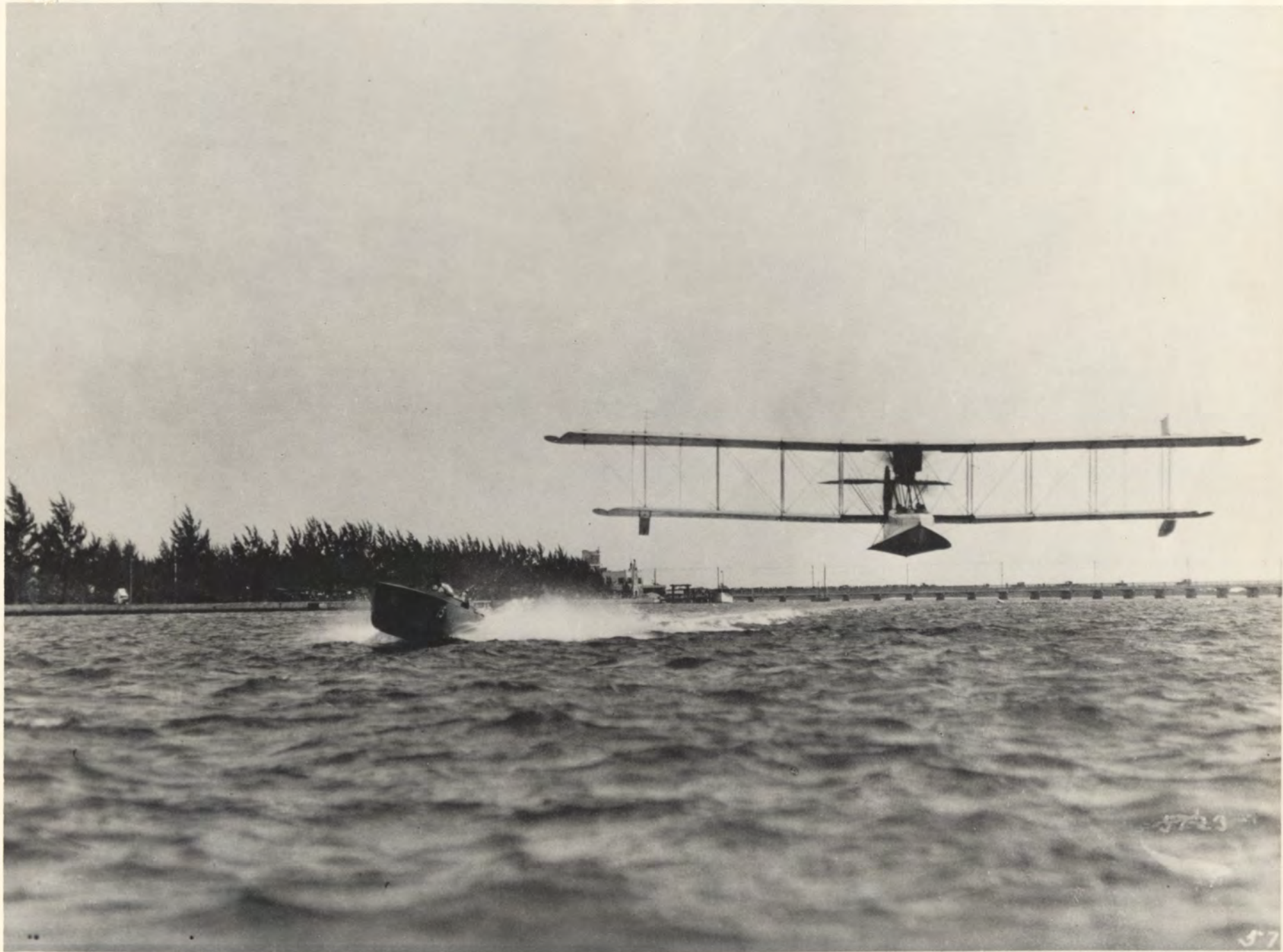
Hi-87



49-19. April 25, 1921—Four generations: Mr. John S. Collins,
Mrs. T. J. Pancoast, Arthur Pancoast and his child.

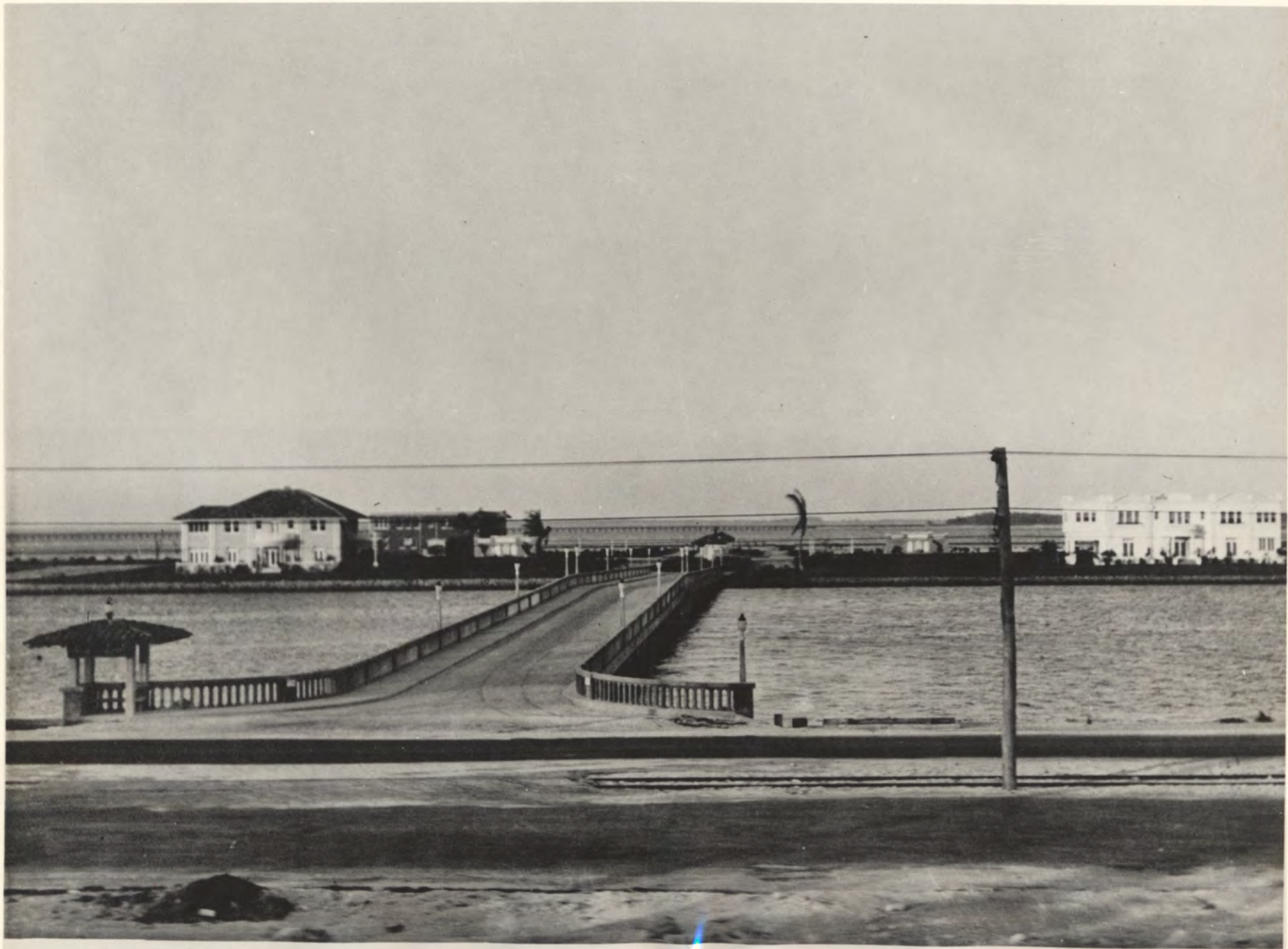
staff photographer

MIAMI BEACH
TOURIST DEVELOPMENT AUTH.
Publicity Dept.



57-23. 1922—Regatta. Seaplane racing a speedboat.

Hi-89



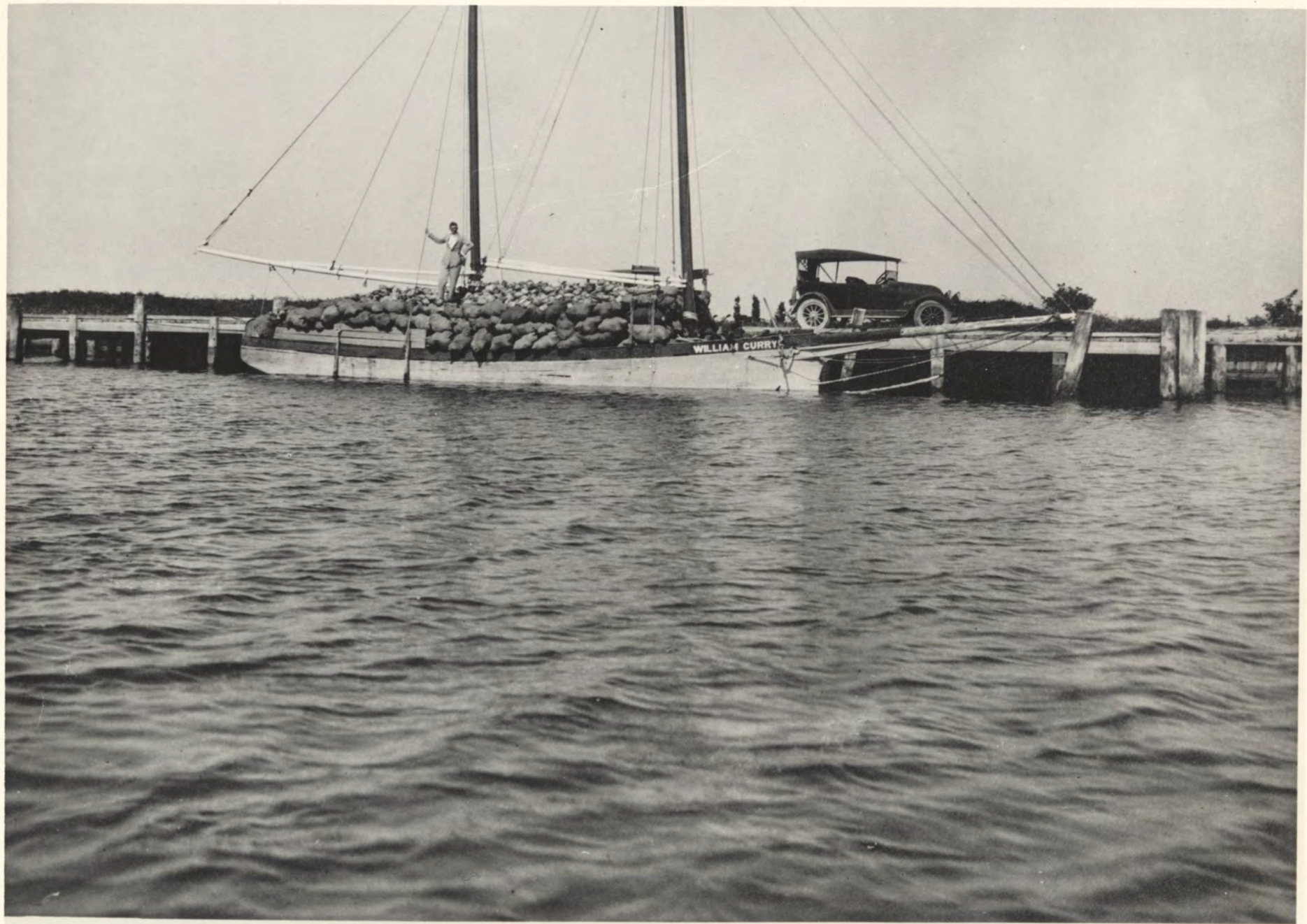
85-14. Feb. 8, 1922—The bridge to Palm Island from the county
causeway.

Hi-90



65-25. Jan. 11, 1922—A fast polo play with Carl G. Fisher to the right in the foreground.

Hi-91



136.12. 1922—One of several loads of coconuts, approximating 10,000 coconuts each, brought from Cape Sable for planting in the North Bay Shore section.

Hi-92



118-13. July 23, 1923—Engineers at work in the development of the North Bay Shore section.

Hi-93



133-13. 1923—Discharge end of the suction dredge, showing the floats supporting the discharge pipes. The dredge is near Sunset Lake.



134-13. 1923—Rosie, the elephant, moving concrete blocks.
Nautilus Hotel in the background.

Hi-98



136-13. 1923—Building a sea-wall near the Nautilus Hotel site.

Hi-99



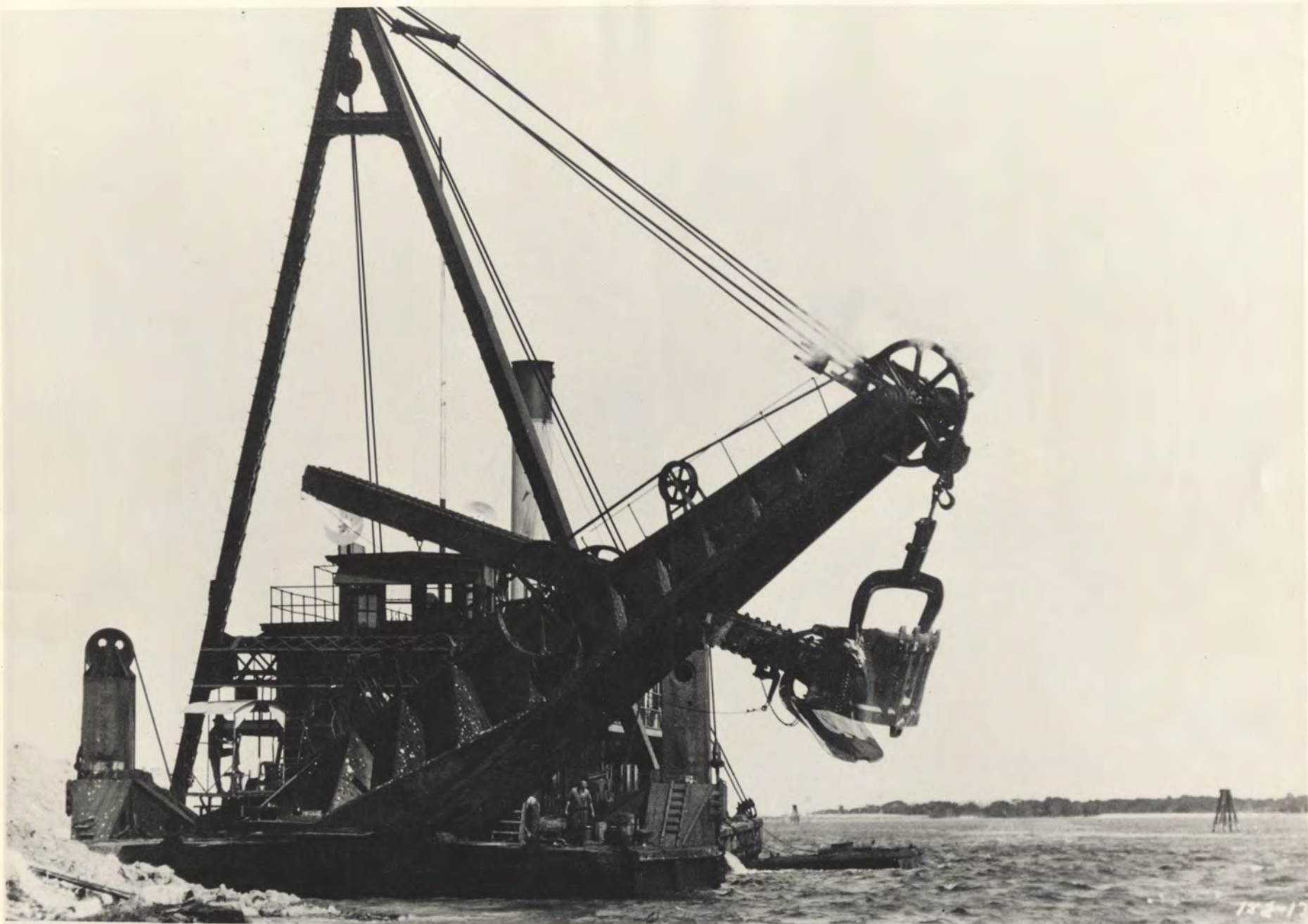
106-25. Dec., 1927—Carl G. Fisher on one of his polo ponies.

Hi-147



111-13. June 25, 1923—Alton Road at Forty-first Street, looking south. Equipment used in developing the North Bay Shore Section.

Hi-103



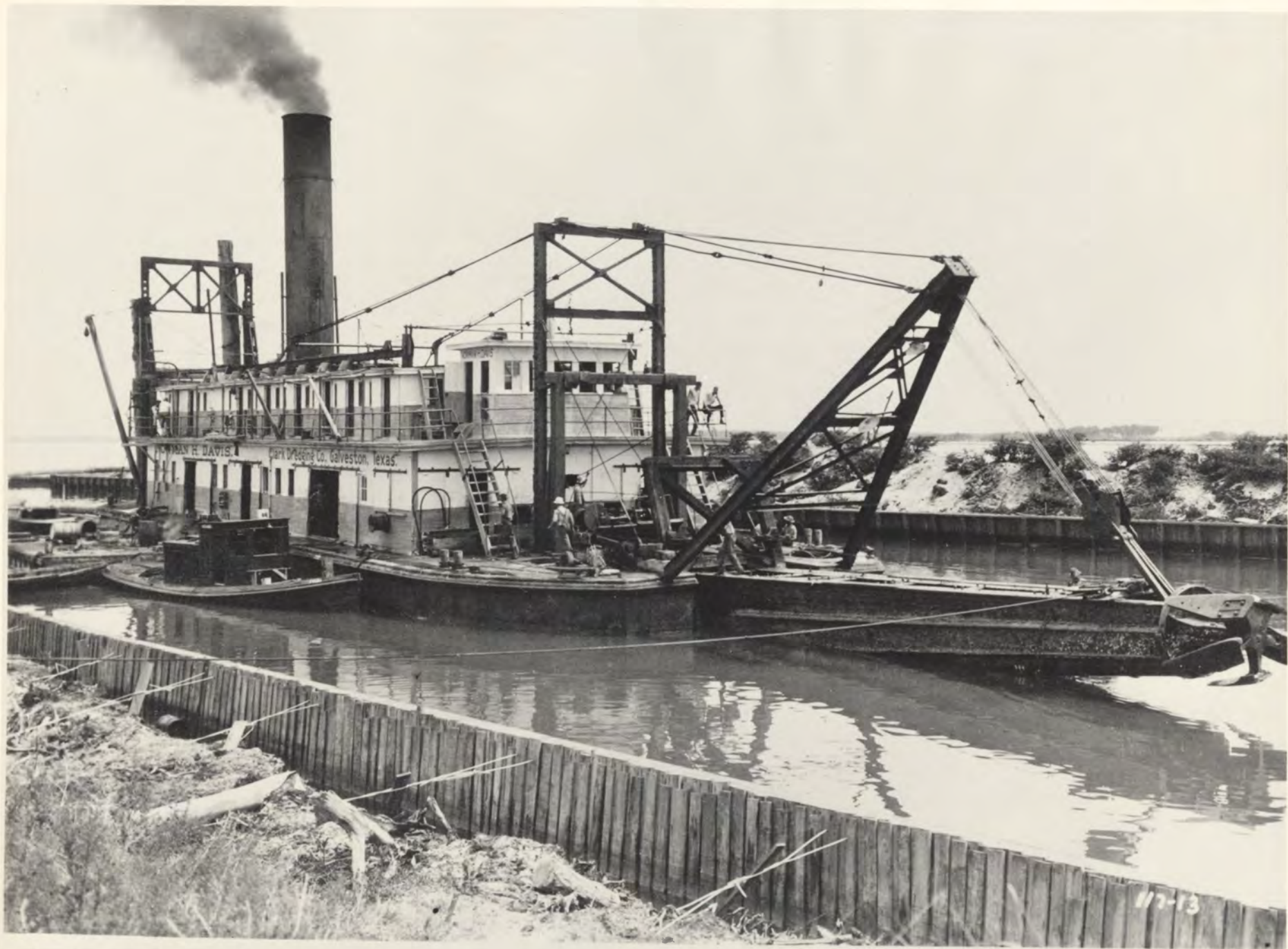
152-13. Aug. 15, 1923—Dredge deepening the channel and digging for the sea-wall construction at the electric light plant on the county causeway.

Hi-104



29-13. 1921—Filling and leveling back of sea wall.

MIAMI BEACH
—●—
JOURNAL OF DEVELOPMENT AUTHORITY
Publicity Dept



117-13. 1923—The "Norman Davis" suction dredge in the canal leading into Surprise Lake.



143-13. 1923—Dredge making ready for a sea-wall, north of
the Nautilus Hotel.

Hi-108



94-13. 1923—Bulkhead of a Venetian Island.

Hi-109



99 12 1914 - Pancoast Lake, Pinetree Drive, and Collins Ave.

TP1 NA 4AAA0 NNN 0 8478

<No. 2719>

25182



47-13. Nov. 1, 1923—The Venetian Islands under construction.
Collins Bridge at the extreme left.

Hi - 111



155-13. Dec. 24, 1923—The Collins Bridge, and the Venetian Islands under construction; looking toward Miami.

Hi-112



142-13. 1923—Nearly ready to fill, just north of the Nautilus
Hotel site.



Order No-331963 ime019

Fuj 1 2/21/2002



121-13. July 23, 1923—Planting grass in the North Bay Shore section.

Hi - 114



102-34. Feb. 15, 1924—Northeast from the roof of the Nautilus
Hotel.

Hi-115



86-8. 1924—Polo fields from the top of the Nautilus Hotel.

Hi-116



101-34. Feb. 15, 1924—North from the roof of the Nautilus Hotel.



104 32. Oct. 31, 1924—The Wofford and Breakers Hotels.

Hi-118



62-23. 1924—Looking northwest from the roof of the Flamingo Hotel, showing the north end of the race course and the unfinished Venetian Islands in the background.



61-23. March 8, 1924—Regatta. The Flagler Memorial, Palm and Hibiscus Islands and Venetian Islands. The dredge is pumping fill into one of the Venetian Islands.



138-14. Nov. 23, 1924—Ocean Drive, partially destroyed.

Hi-121



TP1 NA 40000 NNN 0 8478

<No. 2:2A>

25187



136-14. Nov. 23, 1924 — Roads along the ocean and Indian
Creek.

Hi-122



161-14 Nov. 30th, 1924—Fisher Building on Lincoln Road.

Hi - 123



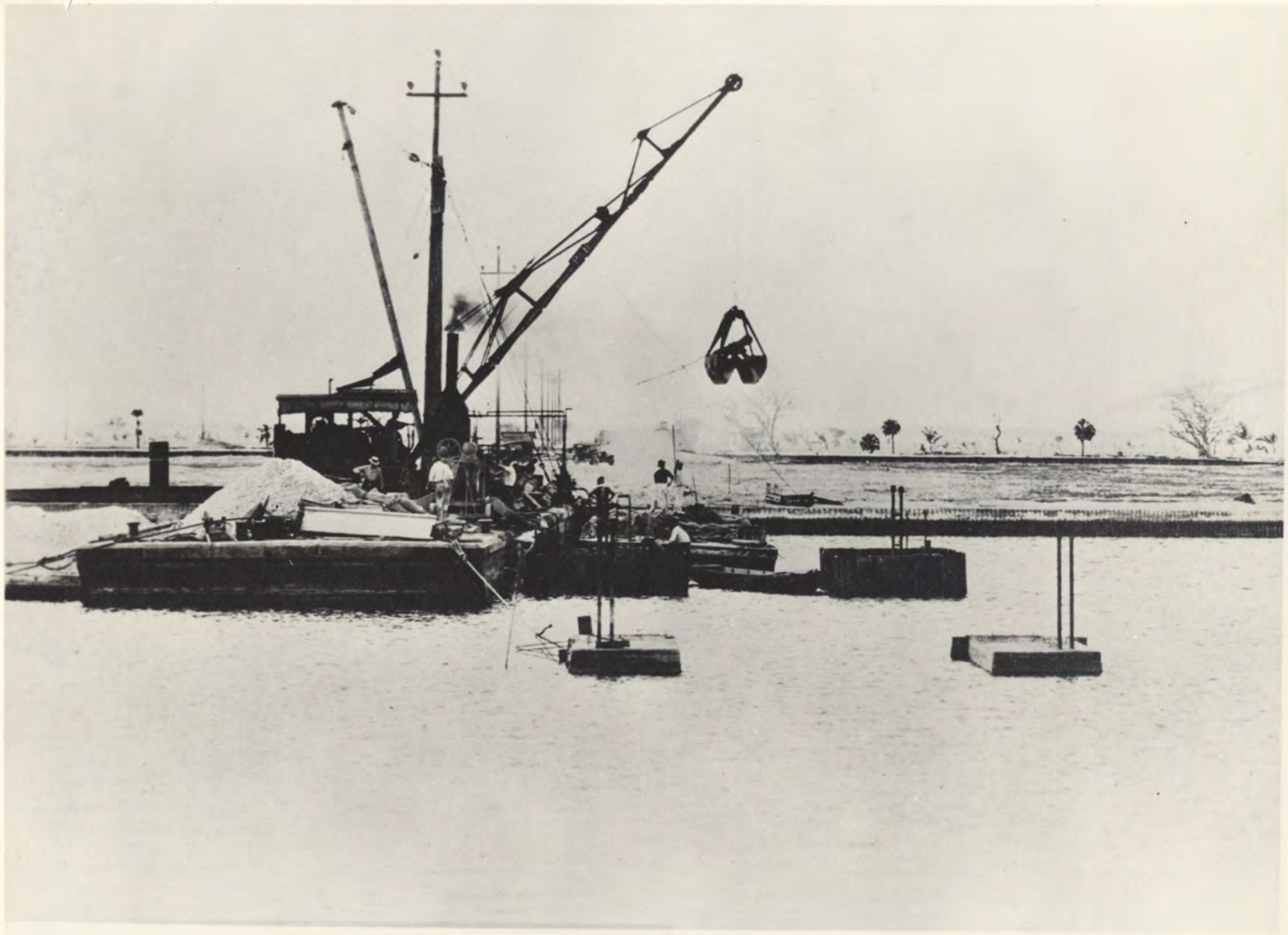
175-13. April 28, 1924—Dredge pipes along Pine Tree Drive and LaGorce Drive at about Fifty-second Street. The piles of dirt are top-soil which was spread on top of the fill after it had settled and dried.

Hi-124



162-14 1924—Lincoln Road. Community Theatre.

Hi-125



163-14. Dec. 14, 1924—Building the drawbridge at Allison Island.

Hi - 126



179-13. 1924—Surveyor driving leveling stakes for the fill in the North Bay Shore section, about Alton Road and Fiftieth Street.

Hi-127



234-17. July, 1924—Indian Creek. The Forty-first Street Bridge is now located about a block north of the islands shown in the middle of the picture.

Hi-128



77-8. Jan. 24, 1924—Carl G. Fisher playing tennis at the Flamingo Hotel courts.

Hi-129



43-16. May 19, 1925—Members of the first cradle roll of the Community Church.



171-14. Oct. 6, 1925—Collins Avenue, north, from below Fifth Street.

Hi - 130



105-34. Jan. 20, 1925—Ship landing at Miami Beach docks.

Hi-132



179-14. April 27, 1926—Looking south from the Deauville Casino, showing the St. Francis Hospital and the Gulf Stream Apartments in the distance.

Hi - 134



180-14. April 27, 1926—Ocean Drive, looking north toward the Deauville Casino.

Hi - 135



117-34. 1926—Looking south from the roof of the Roney Plaza Hotel.

Hi - 136



175-14. April 2, 1926—Collins Canal and Dade Boulevard.



182-14. June 17, 1926—Spanish Village, looking west from
Washington Avenue.



114-34. July 19, 1926—The Fowler Apartments and Collins Park, the site of the present Miami Beach Library.



118-34. 1926—Looking north from the Roney Plaza Hotel.

Hi-141



18-26. 1927—From left to right: Brophy, Dan Mahoney and
Carl G. Fisher playing golf.

Hi - 143



183-14. 1927—Ocean Drive, looking north from Biscayne Street.

Hi-145



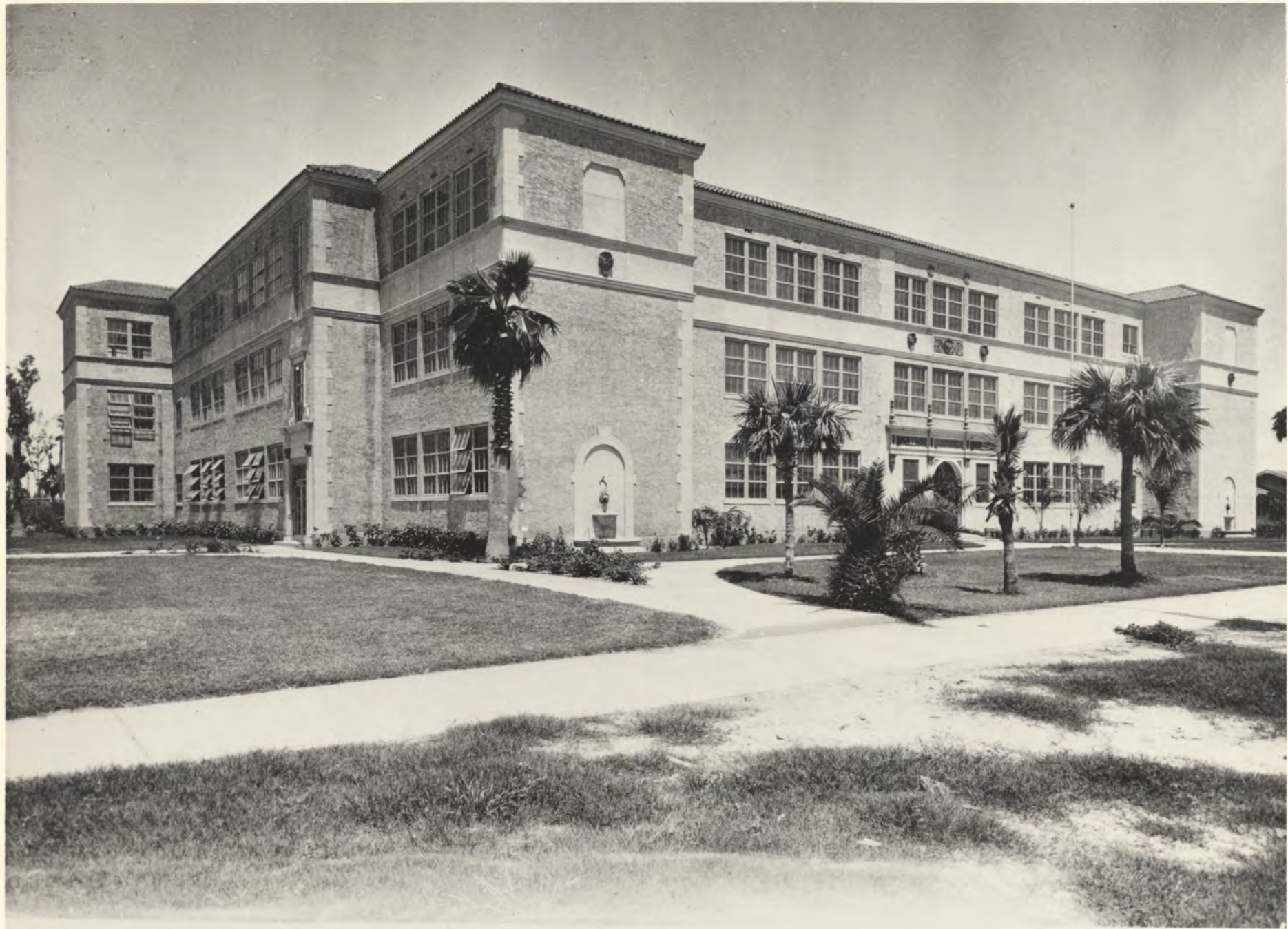
76-16. 1927—Before the egg hunt at the Community Church.

Hi-146



155-12. Aug. 15, 1923—The ocean front, looking south from the Pancoast Hotel.

Hi-101



44-28. 1927—Ida M. Fisher High School, named after Carl G. Fisher's mother.

H: - ~~449~~ 149



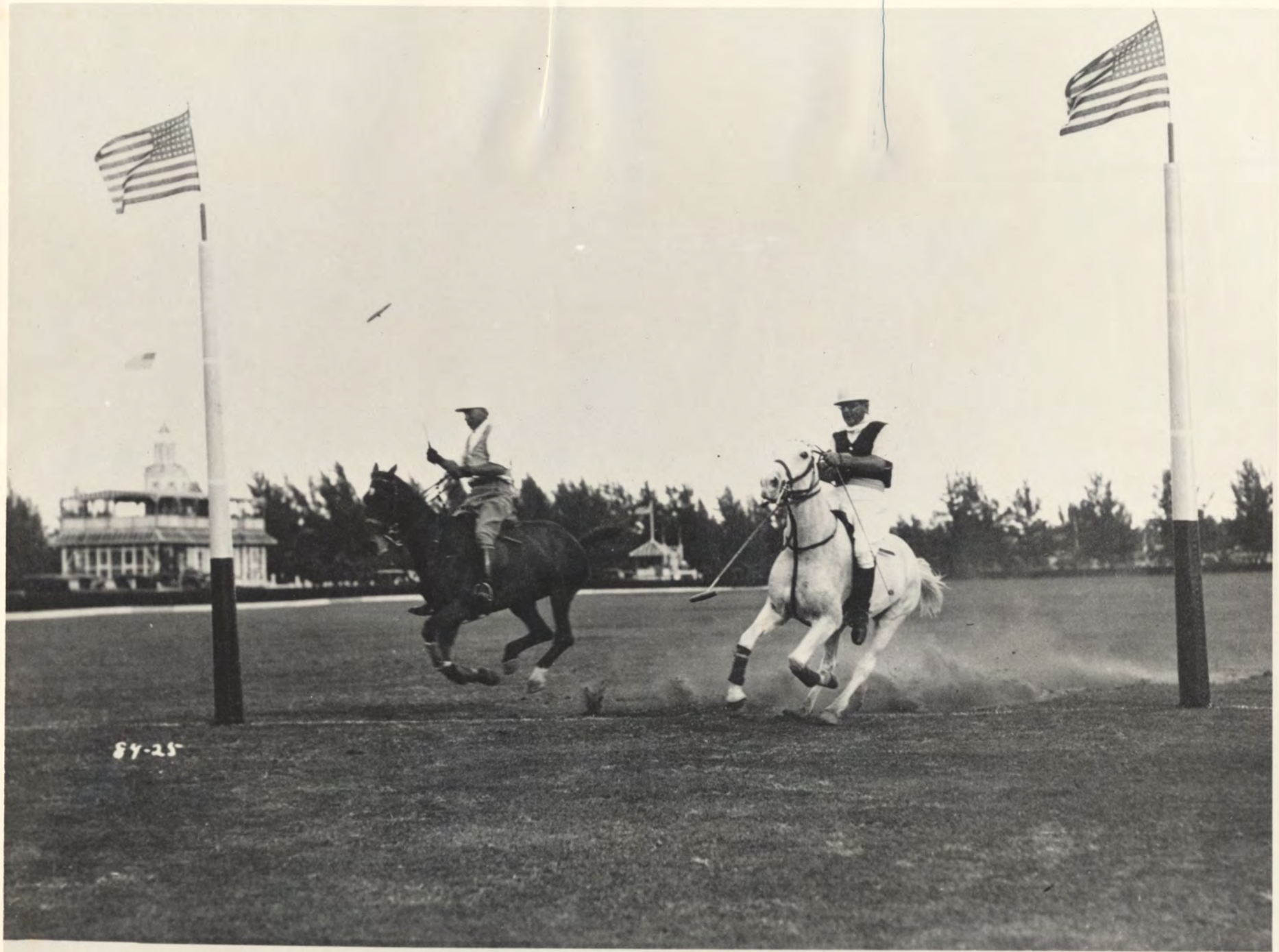
125-23. March 18, 1927—Race boats seen from the roof of the Fleetwood Hotel.

Hi-148



86-27. 1928—Bay Shore golf course.

Hi-151



84-25. Carl G. Fisher playing polo.

Hi-152



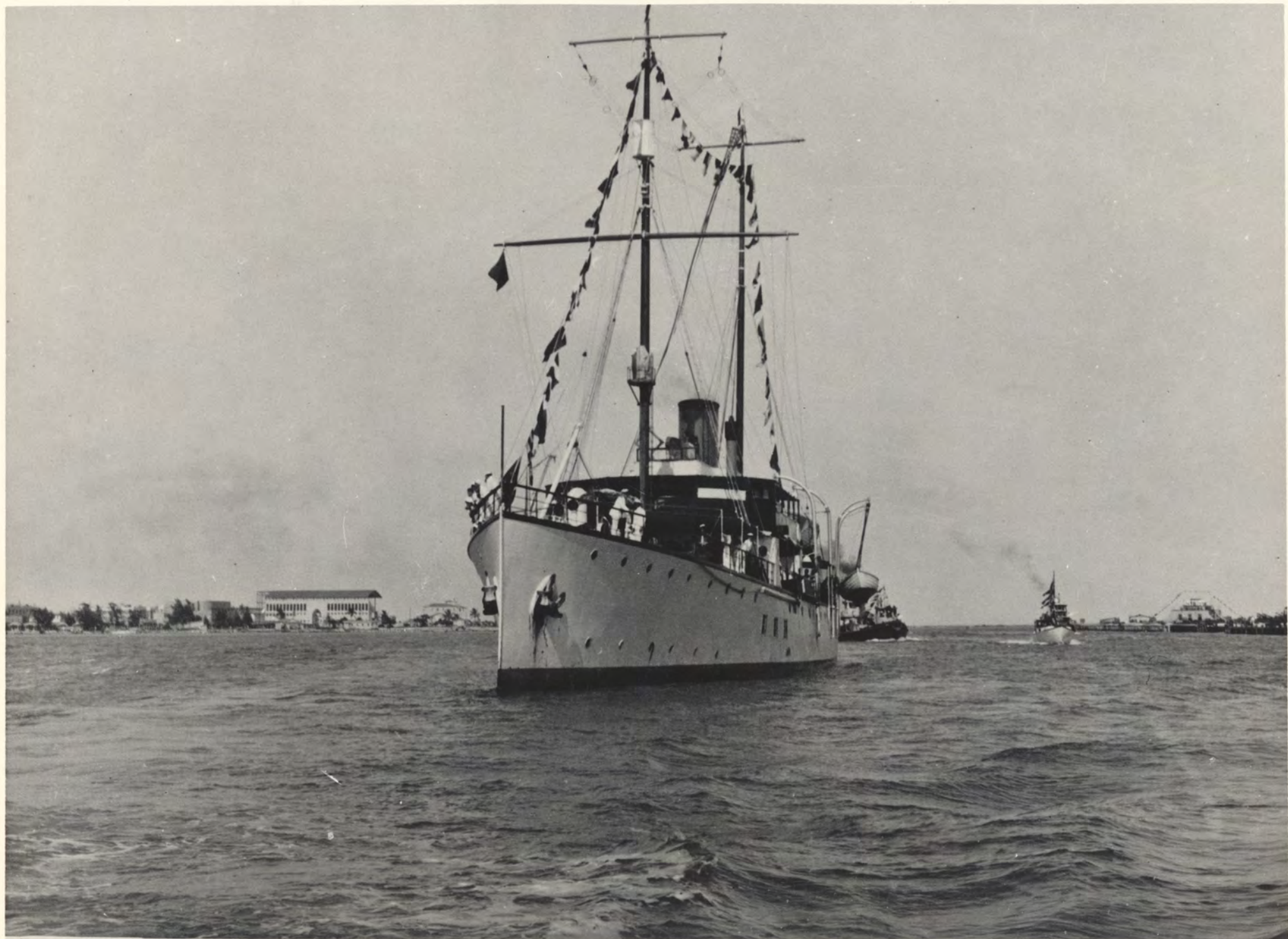
109-25. A characteristic pose of Carl G. Fisher.

Hi - 153



115-25. 1929—Harvey S. Firestone and his four polo playing sons.

Hi - 154



109-22. May 16, 1929—Wm. K. Vanderbilt's yacht, Alva, returning to Miami Beach from a world cruise.

Hi - 156



25-13. Sept. 13, 1920—East side of Indian Creek, about Fiftieth Street, showing the dredge at work on the fill..

staff photographer

MIAMI BEACH
TOURIST DEVELOPMENT
Publicity Dept.



187-10. Dec. 2, 1929—First permanent home of the Rod and Reel Club.

Hi - 157



152-34. 1930—LaGorce golf course.

Hi-159



137-22. 1930—Gondolas in the Collins Canal in front of the Hubbel residence.



128-22. 1930—Col. E. H. R. Green's show boat.

~~Hi-161~~ Hi - 161



147-16. 1931 - The first circulating library at Miami Beach in the Community Church, the beginning of the public library.

Hi-163



42-34. 1930 — The Whitman home.

Hi-162



244 14. Jan., 1930 North on Washington Avenue from Bis-cayne Street.

Vilma GRANAT'S House ON LEFT
1st SERVICES HELD HERE FOR Jewish Community.

6/24/99 (Bara Kalstein)

FURTHER up WASH - AT 8th ST
STONE FAMILY - BLACKSTONE HOTEL

CORNER 1st & WASH NEXT TO GRANAT
LIEBOWITZ PROPERTY

PHOTO BY MIAMI BEACH VISITOR AND CONVENTION
AUTHORITY PLEASE CREDIT: MIAMI BEACH



HL-165 Carl G. Fisher

HL-165 CARL G. FISHER



7712M

Hi 168 ROMAN POOLS ABOUT 1919



Hi 167 ROMAN POOLS ABOUT 1919



HI-166

Roman

Hi-166

ROMAN POOLS ABOUT 1919



MACFADDEN DEAUVILLE HOTEL - 36

HI-170



Belle Isle, Flamingo Hotel, looking
southeast -- 1929

Hi-173



rivo alto, belle island looking
east -- 1926

Hi-174

CR

A-140



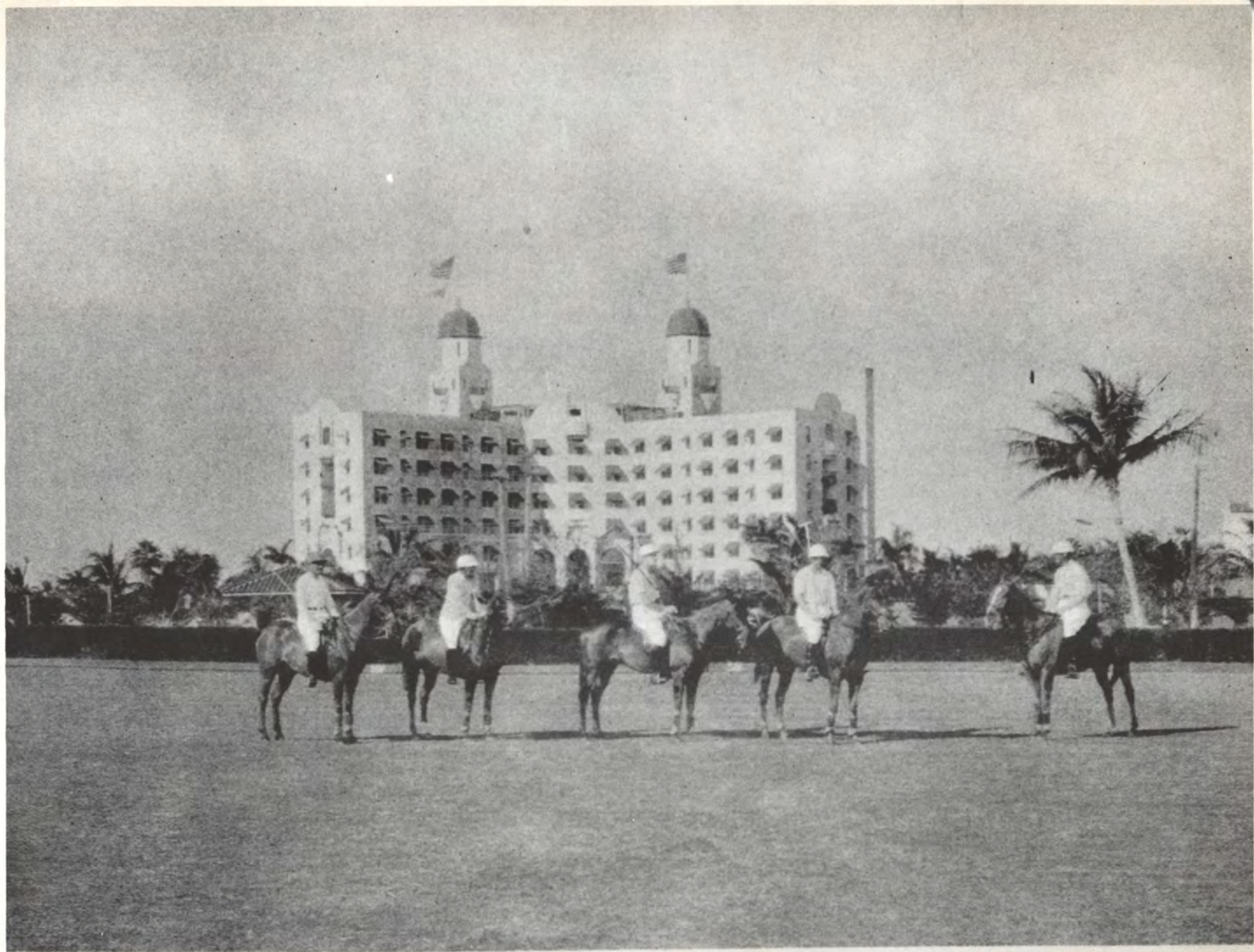
BELLE ISLE WITH FLAMINGO HOTEL AND SOUTH
SHORE IN BACKGROUND. MARCH 1925

HI-175



0 CITY HALL AND FIRE STATION 617 COLLINS AVE.

Hi 177



Nautilus Hotel, Miami Beach, Polo Field in Foreground.

H-189

MIAMI BEACH
TOURIST DEVELOPMENT AUTH.
Publicity Dept.

staff photographer



Office, Meteor Transport and Trading Company, Miami Beach.

H-192

MIAMI BEACH
TOURIST DEVELOPMENT AUTH.
Publicity Dept.

staff photographer



1934 CARTERS PIER - DIXIE BATH HOUSE. I



APRIL 7, 1930

HI-179



1929 - LOOKING WEST, NAUTILUS HOTEL,
POLO GROUNDS IN BACKGROUND, MIAMI BEACH
GARDENS AT EIGHT.

RBMe
1929

HI 182



Claude A. Renshaw 1925

CLAUDE A. RENS HAW

1925



HT-181



DEC 1920

Post Office, Miami Beach, Fla.

APRIL 1933

H1180



SOUTHEAST SIDE OF BELLE ISLE
FEB. 1929

H1-172

R.B.
MIAMI

SYC-1



186-14. 1927—Lincoln Road, looking west.

Hi-144



FISHER 1923

Miami Beach - Biography - Portraits
Carl G Fisher, Genius, industrialist,
humanitarian, Pioneer builder of
Miami Beach
1923

RECEIVED

DEC 17 1954

MIAMI BEACH BUILDING
DEPARTMENT

EMH



1923. FISHER

Miami Beach - Bio
Carl G Fisher, Genius
Humorist, Pioneer
Miami Beach 19

P 24 Top Right
mark.

P 37

TWO PIC
MARK

100%
x 2

AT THE HEIGHT OF HIS CAREER, THE INDOMITABLE
GUIDING GENIUS OF THE MIRACLE OF MIAMI BEACH,
CARL GEORGE FISHER—1923



288-12 1914—Collins Ave. North of Pancoast Lake.

Hi-27

Carney House

HISTORICAL ASSOCIATION OF SOUTHERN FLORIDA
Please give credit line wherever this
photograph is published or reproduced.

Neg. no. 288-12

Carney House



1-13. 1920—Clearing ground at Dade Boulevard and Prairie Avenue.

Hi-67

