

SPECIAL EVENTS: DINOSAUR EXHIBIT, PINE ROCKLAND WALK, HOLIDAY GIFTS

TOUCAN TALK

November - December 2002

Dinosaurs at
Miami Metrozoo:
Experience
the Exhibition!



Toucan Talk is the Official Magazine of Miami Metrozoo and is proudly published by the Zoological Society of Florida.

LOOK

WHAT'S NEW AT THE ZOO

PHOTO: BARBARA CRUTCHFIELD

BIRTHS AND HATCHINGS

- 3 South American red-footed tortoises*July 02
- 8 North American ruddy ducks*July 02
- 1 Male black & white colobus monkeyJuly 07
- 2 Sacred ibis*July 09
- 1 Female greater kuduJuly 15
- 1 Female Addra gazelleJuly 17
- 2 East African crowned cranes*July 28
- 1 Female greater kuduJuly 30
- 1 Male chimpanzeeJuly 31
- 4 East African crowned cranes*August 7, 13

Acquisition: Kenyan impala



NEW BIRDS FOR THE AVIARY

- 1 Male, 2 female Pesquet's parrots.....July 10
- 1 Male blue-crowned pigeon.....July 15
- 3 Male, 3 female Sumatran Trogon.....July 23
- 3 Male, 3 female, gaudy red-throated barbets.....July 23
- 1 Female golden whistlerJuly 23
- 2 Female nicobar pigeonsJuly 25
- 1 Male, 1 female Greater necklaced laughing thrushesJuly 25
- 1 Female black-naped orioleJuly 25
- 1 Male, 1 female painted storks ..August 08
- 2 Male, 3 female plumed whistling ducksAugust 09



Birth: Colobus monkey

ACQUISITIONS

- 1 Male Kenyan impalaJuly 07
- 1 Female harpy eagleJuly 10
- 1 Male African hunting dogJuly 17
- 3 Male, 3 female, 1* hooded mergansersAugust 09

* Gender undetermined



New Aviary Resident: Black-naped oriole

PHOTO: RICHARD ARNOLD

PHOTO: DOLORA BATCHELOR

Members of the Wild Bunch in Action

The Wild Bunch pack has been rumbling around the Zoo, raising funds to support the Zoological Society of Florida and Miami Metrozoo. The Second Annual Howling Bash with more than 350 guests, is expected to raise more than \$15,000 to support education programs that the ZSF provides to underserved children.

We extend our special thanks to the primary sponsor Chivas Regal for supporting the Wild Bunch, to the Howling Bash Chair Valerie Quemada for her immeasurable dedication, and to the Special Events Committee.

For more information on how to be a part of this fun and active group, call (305) 255-5551 ext. 117.



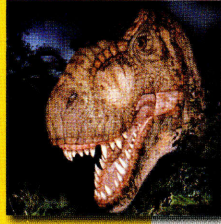
Seen at last year's Howling Bash

Contents

On the Cover:

A *Tyrannosaurus rex* with banana-sized teeth and strong jaws capable of ripping off as much as 500 pounds of flesh at a time!

PHOTO: ©COPYRIGHT UNIVERSAL STUDIOS/AMBLIN DREAMWORKS ENTERTAINMENT INC.



Look What's New at the Zoo! 2

The Wild Bunch 2

Message from the President 4

Meet ZSF's New Board Members 4

Lowland Gorillas 5



Thanks to our Supporters 6

George E. Batchelor 7

Metrozoo's Master Plan 8-9

Miami-Dade Transit Referendum 10

Protecting Endangered Butterflies 11

Zoo Magnet Program 12

KidZoodle 13

Education Programs 14

Jurassic Park: The Life and Death of Dinosaurs 15



Miami Metrozoo Fridge Calendar 16

TOUCAN TALK

NOVEMBER/DECEMBER, 2002 Volume 29, Number 6

TOUCAN TALK

EDITOR

Sherrie Avery

CREATIVE DIRECTOR

Danny Garcia
FB&A Advertising

PHOTOS AND ARTWORK

Jeannette Aquino
Richard Arnold
Sherrie Avery
Dolora Batchelor
Cecilia Betancourt
Barbara Crutchfield
Randy Emmitt
Jerry Levine
Ron Magill
Miami-Dade Transit
Gucci Sarno
Ricardo Stanoss
The Portico Group
Carol Tomlinson
© Copyright Universal Studios/Amblin Dreamworks Entertainment Inc.
Paul Vrooman

CONTRIBUTORS

Sherrie Avery
AZA News
Cecilia Betancourt
Giselle Chamizo
Glenn Ekey
Jennifer B. Getz
Marlene Hawkins
Jamie Lassonde
Anthea Lavallee
Don Lessem
Debbie Mucarsel
Gucci Sarno
Ron Stayton
Eric J. Stephens
Carol Tomlinson
Diana Udel
Rachél Watkins Rogers
Terry Webb

Copyright © 2002 Zoological Society of Florida/Toucan Talk, November & December, 2002
Zoological Society of Florida
12400 SW 152nd Street,
Miami, FL 33177-1499
(305) 255-5551
www.miamimetrozoo.com
Glenn W. Ekey,
Executive Director

2002-2003

BOARD OF DIRECTORS EXECUTIVE COMMITTEE

PRESIDENT

Jennifer B. Getz

PRESIDENT-ELECT

Vincent L. Berkeley

IMMEDIATE PAST PRESIDENT

Daniel J. Licciardi

SECRETARY

Edward Soto

TREASURER

Jorge A. Gross

VICE PRESIDENTS

Colin A. Browning
Hon. Larcenia Bullard
Robert W. Hudson
Sherrill W. Hudson
David Konfino
Daniel J. Licciardi
Manuel J. Rodriguez
Federico J. Sanchez
Ted Schwarz
Diana Udel

AVIARY AD HOC COMMITTEE

William J. Gallwey, III
Sanford B. Miot

ADVISORY COMMITTEE

Andrew H. Weinstein

AT LARGE

R. Kirk Landon
Marc A. Osherhoff
Merrett R. Stierheim
Thom A. Wolek

ZOOLOGICAL SOCIETY OF FLORIDA (ZSF)

EXECUTIVE DIRECTOR

Glenn W. Ekey

MIAMI METROZOO

DIRECTOR

Eric J. Stephens

BOARD MEMBERS

Rodney Barreto
Linda Coll
J. Courtney Cunningham
Hunting F. Deutsch
Ron Esserman
Matthew J. Fine
Lester L. Goldstein
James C. Hartenstein
Barry Johnson
Thea Katzenstein
Eduardo R. Lacasa
Iliana M. Maceiras
Vicki A. O'Meara
Dr. Miguel A. Nuñez, Jr.
Marshall R. Pasternack
Alan J. Pekor
Jay Pelham
William L. Rafferty, Jr.
Valerie Seasholtz
Curtis A. Wolfe

2002-2003 METROZOO OVERSIGHT BOARD

MIAMI-DADE COUNTY MAYOR

Alex Penelas

BOARD OF COUNTY COMMISSIONERS

Dennis Moss

ASSISTANT COUNTY MANAGER

Alina Tejada Hudak

MIAMI-DADE COUNTY PARK & RECREATION DEPARTMENT DIRECTOR

Vivian Donnell Rodriguez

ZSF PRESIDENT

Jennifer B. Getz

ZSF PRESIDENT-ELECT

Vincent L. Berkeley

ZSF IMMEDIATE PAST PRESIDENT

Daniel J. Licciardi

MIAMI METROZOO DIRECTOR

Eric J. Stephens

ZSF EXECUTIVE DIRECTOR

Glenn W. Ekey

ADVERTISING The Image Factory, Marshall Steingold (305) 661-5559

Out-of-state **Toucan Talk** magazine subscriptions: (305) 255-5551, ext. 110 or visit our website: www.miamimetrozoo.com. Please recycle this publication when you have finished reading it.

Message from the President



Dear Friends,

I am honored to serve as the 2002-2003 President of the Zoological Society of Florida, and on behalf of the Board of Directors, extend my gratitude to Dan Licciardi for his commitment to ZSF these past two years as an exemplary president. Along with Dan, I am grateful to the outgoing members of the Board for their service, and welcome our new board members.

This year we embark on a special journey, the launching of the master plan that will define the future of our Zoo. We begin with the opening of the American Bankers Family Aviary: *Wings of Asia*, an interactive and educational experience that teaches the young and old to appreciate exotic Asian birds and their natural habitats. So many of us have waited patiently for this moment, and thanks to your dedication, hard work, and financial support, birds will soon take flight in the aviary.

During my involvement over the last several years, I have been inspired by the time and passion that is at work behind the running of Miami Metrozoo. The partnership between the staff of the Zoological Society of Florida and Miami Metrozoo and local government continues to flourish, thanks to visionary leadership. I salute their

dedication and I am committed to carrying on this tradition of excellence.

When was the last time you visited the Zoo? As a parent I know that Miami Metrozoo serves as a living classroom, sparking my children's interest to learn. A stroll through the Zoo can expand awareness for our planet and the wondrous wildlife with which we share it. Miami Metrozoo serves a multicultural community, with diverse educational programs and events that appeal to a wide variety of our local population. And everyday, tourists from all over the world discover why Miami Metrozoo is ranked one of the country's top ten zoos year-after-year.

We have set our sights on becoming the world's best zoo. We are ready and with your continued support, we will get there. I encourage you to get involved, and help us build South Florida a world-class zoo for generations to come.

Jennifer B. Getz
President
Zoological Society of Florida

WELCOME TO OUR NEW BOARD MEMBERS



Matthew J. Fine, The Miami Herald.

Mr. Fine has held a variety of advertising sales and management positions with *The Miami Herald* over the past 12 years, and was recently named Key Account Sales Manager. He is responsible for mid-size to large local

retailers. Mr. Fine serves on the Board of the Florida Grand Opera, the Weston Chamber of Commerce and is a member of the Greater Miami Chamber of Commerce.

Barry E. Johnson, AT&T. (Photo not available) Mr. Johnson is vice president of corporate affairs for AT&T's Florida operations. With 24 years of service to AT&T, he is responsible for the company's corporate representation in Florida. Mr. Johnson serves as president of the Perrine-Cutler Ridge Council and actively serves on many Boards.

Iliana M. Maceiras, U.S. Pension Trust. Iliana Maceiras is president of U.S. Pension Trust, and manages all company charitable



projects, including relief efforts in the Dominican Republic, Venezuela and Peru and support to several missionary groups throughout Latin America.



Valerie Seasholtz, Assurant Group.

Mrs. Seasholtz began her career at Assurant Group in 1976 and has held various positions in Claims and Processing Operations. In 1998, she was promoted to Senior Vice President.

Curtis A. Wolfe, Steel Hector & Davis, LLP. Mr. Wolfe is a partner in the law firm of Steel Hector & Davis, LLP where he counsels clients on corporate and intellectual property transactions domestically and in Latin America, including mergers and acquisitions, technology transfers, project finance, software licensing, and trademark and copyright registrations. Mr. Wolfe is a representative on the Board of Directors of The Beacon Council and director with the arts company, Dance Esaias.



By Terry Webb, Zoological Supervisor

All in the family

Metrozoo's lowland gorillas

PHOTO: SHERRIE AVERY



Josephine, top of photo, watches moka (left) while Frederika cradles baby Alice.

There are similar and different patterns with gorilla and human infant development. The family, infant and social situation will affect the time and how well an individual attains a skill or behavior.

The chart below contains comparisons of the two species. Note that the values are only averages as each infant species will vary.

Gorillas are very social and live in extended family groups very similar to humans. J.J., a 23-year-old silverback (Dad), dominates the lowland gorilla family at Miami Metrozoo that includes 28-year-old Frederika (Mom), 6-year-old Moka (Daughter), infant Alice (Daughter born on 6/22/02) and an unrelated 36-year-old female, ("Aunt") Josephine. They all live together as a social group, and are typical of gorillas living in the wild.

Group interactions, play, communication, mother/infant interactions, and group/infant interactions are all integral components for gorillas to develop naturally. Just like their human counterparts, youngsters learn from the adults, and the way they react to each other is important to their well-being, development and captive management.

J.J. watches as Moka inspects a small twig.

PHOTO: RICHARD ARNOLD

TRAIT/DEVELOPMENT

GORILLA

HUMAN

Constant physical contact with mother	Birth to 4-5 months	Never
Nursing / no solid foods	Birth to 4-6 months	Birth to 6 months
Regularly ingesting solid foods	8 months	6-12 months
Control of body movements	Birth, can climb to mother unsupported	4 months, some control
Reach for an object	2-3 months	8 months
Sit alone	3 months	6-12 months
Crawl, creep on hands and knees	2-3 months	6-12 months
Walk	quadrapedal / 4-6 months	bipedal / 10-18 months
Independent from mother	3-5 years, depends on Interbirth interval and social situation	5-6 years, depends on family and social situation
Independent from family	May occur at 8-10 years for males that disperse, or individuals may live in same extended family group for entire life	In some cases as early as 16, typically around 18, or never

Thank You!

Our heartfelt appreciation to **AutoNation, Inc.** for joining ZSF's Blue Morpho Corporate Membership Circle. Thank you to **The Sheldon V. and Carroll C. Brooks Foundation, Inc.** for its annual support. We are most grateful to **Citigroup Foundation** for its annual support of ZSF and Metrozoo's wildlife conservation efforts. Our heartfelt thank you to **Hunting Deutsch** and **John Seykora** for making the Citigroup Foundation donation possible. Many thanks to the **City of Hialeah** for its support through corporate membership. Many thanks to **Epson America, Inc.** for its commitment to ZSF and Metrozoo. Our sincerest gratitude to **Ron Esserman** and **Esserman Automotive Group** for their generous support of our conservation education endeavors. Sincerest thanks to **G & G Florida, Inc.** for its generous contribution. An earnest thank you to **The Charles N. and Eleanor Knight Leigh Foundation** for its commitment to ZSF's goals. Thanks to **The Kelly Foundation, Inc.** for its

yearly commitment to the work of ZSF and Miami Metrozoo. A sincere thank you to the **John S. and James L. Knight Foundation** for its generous support of ZSF's work with our community's youth. Thanks to **David Levine** for being a friend of ZSF and Miami Metrozoo. An earnest thank you to the **Miami-Dade County Public School System** for its continued support. A warm thank you to **Michael O'Neill** for his generous support. A special thank you to the **Folke H. Peterson Charitable Foundation** for its ongoing dedication to and support of ZSF and Metrozoo. A special thank you to **Ryder System Charitable Foundation, Inc.** for its continued support of our work with the community's youth, and to **Vicki O'Meara** for making this donation possible. A special thank you to **Marianne Tirri** for her support of our mission.

You're great friends to have!





George Batchelor and Diana Udel

GEORGE E. BATCHELOR

ZSF Board Member, Benefactor and Friend

1921 - 2002

George Batchelor's contributions to the Zoo have been numerous and have left beautiful exhibits for many generations to enjoy. The Falcon Batchelor Komodo Dragon Exhibit at the Asian River Life Encounter was named after Batchelor's son, Falcon, who died at age 35 of cystic fibrosis. This spectacular immersion exhibit enables visitors to see the world's largest lizards up close, not only on the exhibit, but also in the Zoo's outreach programs. Batchelor's commitment to the propagation of endangered species was rewarded when the pair produced 27 offspring in a single clutch - a record hatching of Komodo dragons for the Western Hemisphere.

This kind humanitarian was especially concerned for the welfare of Miami's children. His gift of a rare king cheetah, King George, to Metrozoo has enabled ZSF to create an extraordinary outreach program to children who normally would never get the opportunity to visit the Zoo. King George and Savannah, a female African cheetah, are taken to several inner city schools to teach students about wildlife conservation. Interacting with Metrozoo's animals was one of George Batchelor's favorite things to do. He was especially fond of the Cheetahs.

Batchelor contributed substantially to the next zoogeographical section of the Zoo to be built, the Tropical America exhibit, scheduled to open in 2005. Set among remnants of an ancient Mayan settlement cleared from the jungle, visitors will encounter the wildlife of the rainforest, enjoy a river cruise, and dine in a waterfront restaurant.

The Batchelor Theater at Dr. Wilde's World, for the past two years, has featured a film on the biodiversity of the Tropical American rainforest. Now, through January 3, 2003, the theater will be filled with the images and plight of the great dinosaurs.

"George's kindness and generosity to our Zoo will be apparent for generations to come," said long-time friend and fellow Board member, Diana Udel. "George was an ardent supporter of Miami Metrozoo and was committed to making it the world's best zoo."

"George Batchelor is a wonderful example of how vital and beneficial a long-term, deep commitment over a number of years can so dramatically and positively impact the growth and development of the Zoo," said Eric Stephens, Director, Miami Metrozoo.



Animal Keeper Jennifer Nelson, George Batchelor and King George

"The Zoological Society of Florida and Miami Metrozoo have lost a wonderful friend and a passionate champion of the Zoo's wildlife conservation efforts."

Glenn Ekey, ZSF Executive Director.

The Zoo's master plan provides a view of the long-term direction of the 740-plus acre facility and was unanimously approved by the Miami-Dade County Commission at their July 11 meeting. Already valued as one of the nation's premier zoological parks, Miami Metrozoo seeks to become the top zoo in the world through completion of the plan. "When a tourist thinks of Miami, we want 'Miami' to be synonymous with 'Miami Metrozoo,'" explained Glenn Ekey, executive director, Zoological Society of Florida. "There isn't any reason why Miami Metrozoo can't be one of the primary purposes for tourists to come to Miami. We feel confident the state-of-the-art, multi-purpose facility we've designed will create a surge in our local and state economy."

Miami Metrozoo Master Plan

Why is the master plan needed?

Metrozoo is consistently rated in the top 10 zoos in the U.S. by *Travel & Leisure Magazine*, was recently rated the #1 visitor attraction in Miami by readers of *South Florida Parenting Magazine*, and voted #1 for family fun in Miami by the *Best of City Search*. So why is the master plan needed? "Miami Metrozoo's original master plan was completed 25 years ago. Since then, there have been dramatic changes in exhibitry, which will be implemented under the new plan. Just as large corporations undergo long-range planning, Miami Metrozoo must evolve and plan," said Eric Stephens, director, Miami Metrozoo. "Our goal is to make our top-10 Zoo recognized as the best in the world."

Phase I of the plan is the American Bankers Family Aviary: *Wings of Asia*, which will be substantially completed by the end of this year and open to the public spring of 2003. The second phase is already being designed, and will soon be bid out for construction.

The Master Plan calls for eight distinct zoogeographical regions from around the world, ranging from the Florida Everglades to the shores of Patagonia, from the African savanna to a saltwater swimming lagoon on a tropical Asian island. Each region will be unique, providing visitors with an immersive, educational experience unlike anywhere else. Within these regions, themed villages will provide shelter, refreshments, educational opportunities and a variety of visitor experiences.

When will the master plan take place?

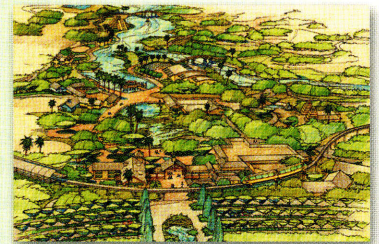
The master plan will be completed over a 20-year phasing process, and changes will be

seen very soon. Phase 1 will be complete early 2003 with the opening of the American Bankers Family Aviary: *Wings of Asia*, followed by Zoo-wide visitor amenities and the Tropical America exhibit shortly thereafter. The remaining projected phases include lakes connecting all the exhibits by boat rides, a re-design of the Australian section, a brand new Florida habitat, the Islands of the Caribbean, Islands of Asia & the Indian Ocean, an African Tropical Rainforest & Village and Lemur Island, an African Savanna complete with Land Rover safari, an Asian Village and Canopy Walk, the South American Orinoco River & Amazon River Basin, the South American Rainforest, Cloud Forest, Pantanal and Patagonia, an Eco-Lodge for overnight and executive retreat facilities, and a Theater, Education Center, and renovations of the Tiger and Siamang exhibits.

In order to complete the plan at one time, the Zoo would have to close for at least 5 years, missing an entire generation of young children.

Who has been chosen to design the new Zoo?

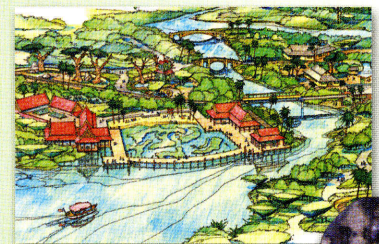
The Portico Group, a preeminent architecture, landscape architecture and interpretive design firm, founded in Seattle in 1983 is creating the interpretive designs. The Portico Group is one of the leading designers in the U.S. and the world for award-winning zoos, aquariums, botanical gardens, interpretive centers and science museums - all the elements that will be included in Miami Metrozoo's master plan.



Front Gate:
A new look. A new experience.



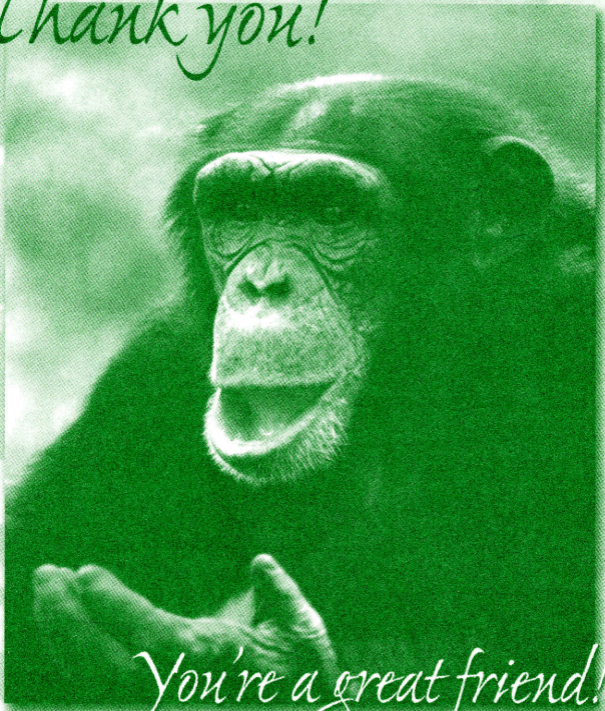
Tropical America



**The islands of Asia
and The Indian Ocean**



Thank you!



You're a great friend!

On behalf of all our furry, winged, and scaly friends at Miami Metrozoo, we thank you for your kindness and generosity.

The mission of the Zoological Society of Florida (ZSF) and Miami Metrozoo is to encourage an appreciation for the world's wildlife and to help conserve it for future generations.

Please help us update our record.

Name _____

Company _____

Address _____

City _____

State _____ Zip _____

Phone _____

Fax _____

E-mail _____

The Zoological Society of Florida (ZSF) is a non-profit 501(c)3 organization under the IRS code. It is registered with the State of Florida under the Solicitation of Contributions Act, Chapter 496, Florida Statutes. A copy of the official registration and financial information may be obtained from the Division of Consumer Services toll free in Florida: 800-435-7352.

YES! I want to support the Zoological Society of Florida's work at Miami Metrozoo.

Enclosed is my contribution of:

- \$1,000 \$500
 \$250 \$100
 \$50 \$25
 Other amount \$ _____

We are grateful for donations of any amount and ask that you be as generous as possible.

My donation is for:

- General support of ZSF programs
 ZSF's Adopt-An-Animal program
Specify animal _____
 My gift is in honor, or in memory of _____
Notification to _____

Please indicate method of payment:

- I have enclosed a check made payable to Zoological Society of Florida.
 I wish to pay by credit card:
 American Express
 MasterCard
 Visa
 Other

Amount: \$ _____
Card Number: _____
Exp. Date: _____
Signature: _____

Please make all checks payable to:

ZOOLOGICAL SOCIETY OF FLORIDA
12400 SW 152nd Street • Miami, Florida 33177
Phone: (305) 255-5551 • Fax: (305) 255-7126
• www.miamimetrozoo.com
(For your convenience, use this envelope)

ZOOLOGICAL SOCIETY OF FLORIDA ALL-PROGRAM REGISTRATION FORM

Pre-registration is required for all programs. Class size is limited.

PARTICIPANT INFORMATION

Name _____
Address _____
City _____ State _____ Zip _____
Day Phone _____
Eve Phone _____
Are you a ZSF Member? Yes _____ No _____
Membership # _____
Payment Enclosed Check # _____
MasterCard _____ Visa _____ AMEX _____
Credit # _____
Expiration Date _____
Customer Signature _____
Total Camp or Program Fee: \$ _____

PARENT/ GUARDIAN'S INFORMATION

Name _____
Contact Phone _____
Age/Grade of Child _____
Program _____
Program Date (s) _____
Session _____
Session _____

CAMPERS ONLY/CAMPER'S MEDICAL INFORMATION

Physician's Name _____
Phone _____
Dentist's Name _____
Phone _____

In an emergency, if the parent, guardian, or designated physician/dentist cannot be reached, I authorize the Zoological Society of Florida to transport and/or obtain medical services from any physician/dentist for my child.

Signature of Parent/Guardian _____
Date _____

(Please fill out both sides of registration form.)

A WORD ABOUT THE ZOOLOGICAL SOCIETY OF FLORIDA & YOUR MIAMI METROZOO

When you give to the Zoological Society of Florida (ZSF), you give to our education programs, our animals and our efforts to educate the community about wildlife preservation and conservation. Everyday, your gift is at work, helping us complete our important mission to encourage an appreciation for the world's wildlife and to help conserve it for future generations.

Wildlife conservation is a top priority for us, and our goal is to enlighten others through the Zoo's network of multi-faceted education programs. Currently Miami Metrozoo is breeding over 40 species of animals, like the Bengal tiger, that are in danger of extinction. We are helping to conserve tree kangaroos in New Guinea and Amazon parrots in the West Indies. Over 200 volunteers spend some 40,000 hours a year teaching visitors about the animals.

If it were not for Metrozoo and the Zoological Society of Florida, your children and grandchildren might never have the privilege of seeing a black rhino or an African elephant.

We know you have a choice in gift giving. We value and appreciate your generosity and recognize your gift as an act of genuine caring and support of our mission. Please contribute to ZSF and make a difference in the future of the world's wildlife. In doing so, you will not only help make Miami Metrozoo a better place to visit, but you will also increase the odds that the animals you see here will not become extinct.
Thank you.





THE ZOOLOGICAL SOCIETY OF FLORIDA
 12400 SW 152ND STREET
 MIAMI, FLORIDA 33177-1499

AFFIX
 PROPER
 POSTAGE

(Please fill out both sides of registration form.)

CAMPERS ONLY/CAMPER'S MEDICAL INFORMATION (CONT.)

Please indicate any medical conditions or health problems of which the Camp staff should be aware.

Please describe: (if you require further space, please use a separate sheet of paper):

Allergies _____
 Handicap _____
 Prescribed Medications _____
 Other _____

(Your signature below gives permission to Camp staff to dispense only required medications you send with your child. Please provide the prescribed container, paraphernalia necessary for taking medications, and explicit instructions on a separate sheet of paper.)

Signature of Parent/Guardian _____

Date _____

NAME OF PERSON(S) WHO WILL PICK UP THE CHILD

Name _____
 Relationship _____
 Phone# _____
 Second name _____
 Relationship _____
 Phone# _____

I give permission for my child to participate in the Zoological Society of Florida camp or other program as indicated above. I have read the registration and medical sections and have supplied accurate information. My child can be photographed and his/her picture used for public relations purposes.

Signature of Parent/Guardian _____

Date _____

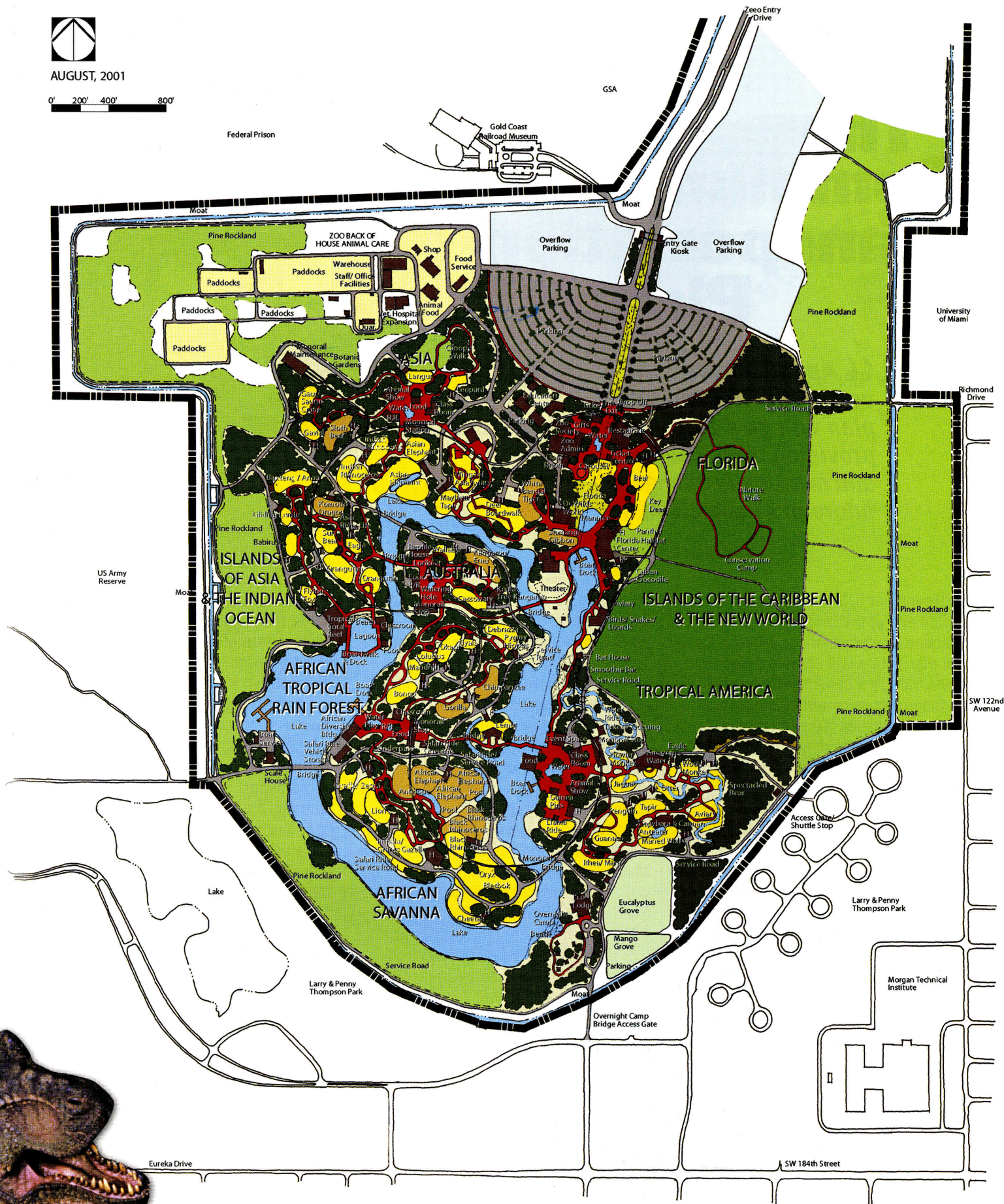
RESERVATIONS ARE REQUIRED, and registration cannot be processed unless this form is completely filled out.

For reservations, call 305-255-5551 and mail registration form to **Zoological Society of Florida/Education Department**, 12400 SW 152 St, Miami, FL 33177-1499 or fax to 305-255-7126



AUGUST, 2001

0' 200' 400' 800'



MIAMI METROZOO MASTER PLAN AND FURTHER DEVELOPMENT

MIAMI - DADE COUNTY
PARK & RECREATION DEPARTMENT

SAVINO & MILLER DESIGN
LEDO INTERNATIONAL
EAC CONSULTING
GLADYS KIDD & ASSOCIATES
SZENDERSKI & ROHANI

By Steve Shiver,
Miami-Dade
County Manager

The Community Transportation Plan.

“Approving the community transportation plan will go a long way in providing transit services and drastically change the future of Miami-Dade.”

-- Steve Shiver,
Miami-Dade County Manager



On November 5, Miami-Dade voters will decide one of the most important issues affecting the future of our county. On that day, voters will choose whether to levy a half-cent sales tax for transportation improvements. This critical measure allocates 100 percent of all funds collected, and all matching funds realized, toward transportation improvements.

The Community Transportation Plan will nearly double the amount of bus service in Miami-Dade County within the next five years. Up to 89 miles of new or extended rapid transit lines will be constructed throughout the County. These improvements will provide the mobility for residents and visitors to jobs, shopping, schools, medical facilities, and recreation including Metrozoo in southwest Miami-Dade.

The Community Transportation Plan also calls for a citizens' panel to ensure that the public is informed and involved in the appropriation process.

TRANSPORTATION IMPROVEMENTS WILL DIRECTLY IMPACT METROZOO.

Currently, Metrozoo is served by the Coral Reef MAX, which operates between the Dadeland South Metrorail Station and the Country Walk neighborhood via the South Miami-Dade Busway and S.W. 152 Street.

This route serves the Zoo on weekdays from 9:19 a.m. to 5:29 p.m., and weekends from 8:56 a.m. to 5:36 p.m. The Coral Reef MAX runs every 20 minutes during rush hours and every 45 minutes in the midday. Weekend service is every 40 minutes.

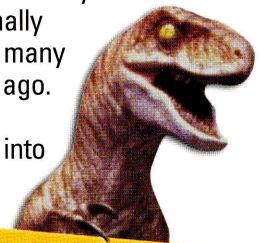
The Peoples Transportation Plan, in the short term, would improve service on the Coral Reef MAX to every 15 minutes during weekday rush hours and every 30 minutes during weekday midday and weekends. In the longer range, Metrorail would be extended along the U.S. 1/Busway corridor from Dadeland South to Florida City and along the West Kendall corridor from the Dadeland area to S.W. 147 Avenue. Direct and frequent shuttle routes would connect these new Metrorail lines with Metrozoo.

WE NEED YOUR SUPPORT.

Voting yes for the transportation referendum will yield \$5.5 billion dollars over a 20-year period that will be used exclusively for transportation. This money will also generate additional funding from the state and federal governments, meaning residents will get more for their dollar than the half-cent they invested. Best of all, the spending of these funds will be supervised by people like you; an independent citizens' oversight panel.

When companies relocate to other cities, they usually prefer to move to cities where efficient mass transit systems exist. Having quick access to buses, rapid transit and surface-light rail systems represents considerable savings in labor, materials, and energy over the years. It means a better business climate for companies to grow and prosper. It means more connectivity and better personal finances when people can commute more easily to their jobs.

Voting **YES** for the community transportation plan finally means doing what so many communities did long ago. It is time Miami-Dade catches up and soars into the new century.



To view a copy of the
Community Transportation
Plan, please log on to:
www.trafficrelief.com


or call
Miami-Dade Transit at:
305-884-7567

To contact Steve Shiver directly:
e-mail: manager@miamidadegov
Office: 305-375-1032

By Gucci Sarno
Education Specialist

The Zoo Magnet Program:

Hands-On Education at the Zoo



Hey buddy,
I don't have time to
play right now. I'm
planting an herb garden.
But I'll stop by your
exhibit later...

Year-round, Zoo Magnet students from Richmond Heights Middle School visit the Zoo on a weekly basis. Through a variety of classroom programs, behind-the-scenes tours, and interactions with staff, program participants explore the Zoo and learn about its wild inhabitants. Since Miami Metrozoo, the Zoological Society of Florida, and Miami-Dade County Public Schools teamed up to sponsor a magnet program, Zoo Magnet students have been visiting the Zoo as part of their regular class schedule.

Discussions of Zoo history, the role of modern zoos, animal adaptations, and conservation are lead by ZSF Education staff. These interactive presentations include biofacts and live animals selected to reinforce key concepts. In this way, the material goes beyond the textbook and enables students to learn through first-hand observation. Each student group is also taken on a special tour of the Zoo's Pine Rockland nature trail. In the Pinelands, the students learn to identify many plant species endemic to the region. They also map the area in order to monitor its growth and change. This endangered Florida habitat represents a local conservation imperative. Through our unique program, knowledgeable Zoo Magnet students become empowered to make a difference.

The Education staff also arranges opportunities for the students to meet zookeepers and to view the Zoo's behind-the-scenes areas. Meeting with Zoo staff and docents enhances the Zoo Magnet experience and allows professionals with many years of experience at Miami Metrozoo to share their expertise and insight. For example, Zoo Magnet students meet with the Registrar and the Graphics Department to learn about animal record keeping and exhibit design. The animal trainers also make time to demonstrate techniques for training the animals in the wildlife show. On a visit to the Zoo kitchen, students learn how the carnivore (meat eaters), herbivore (plant eaters), and omnivore (animals eating both meat and plants) diets are prepared; while, at the Clinic, they see the facilities used to medically treat the animals.

The Zoo Magnet students also make important contributions to the Zoo. For example, this year they plan to establish and maintain an herb garden on Zoo grounds. The herbs will then be incorporated into the animals' diets as a form of enrichment.

The Richmond Heights Middle School Zoo Magnet staff, lead by Dr. Suzanne Banas, is a team of highly motivated teachers who have done an outstanding job conducting the program. Recently, Ms. Annette Sandin, 7th grade Zoo Magnet teacher, was selected to participate in the U.S. Department of Education Students Impact Study, which is part of the Alliance + Project and Savvy Cyber Teacher Professional Development Program. She and eight other teachers worked on a project involving the use of technology in education, sponsored by the Stevens Institute of Technology. The enthusiasm and hard work of these teachers sets a fantastic example for their students. We very much appreciate the hard work and exemplary efforts of these dedicated Zoo Magnet teachers.



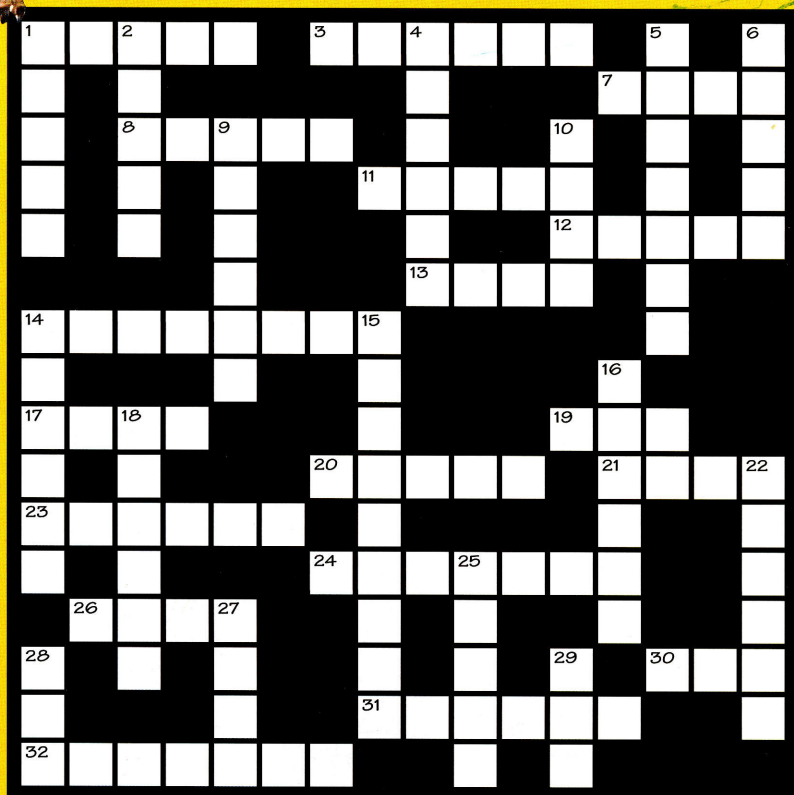
KIDZOODLE

FUN AND GAMES JUST FOR KIDS!



CROSSWORD PUZZLE

THEME: WILDLIFE OF CENTRAL AND SOUTH AMERICA



USE THE CLUES ACROSS AND DOWN TO SOLVE THE PUZZLE.

Clues Across

1. Moves very slowly
3. Alligators' relative
7. Hibernates sometimes
8. Piglike body with small trunk
11. Large colorful bird
12. Lives in Andes, like a camel
13. They live in colonies
14. Constricting reptile, likes water
17. Also called a panther
19. Flying mammal, hangs up-side-down
20. Bird of prey called 'Harpy'
21. Similar to sheep, has little horns
23. Largest bird, lives in Andes
24. Flesh-eating fish
26. They live in hives
30. Large reptile, squeezes its' prey
31. Nocturnal cat with rosette spots
32. Hard-shelled insects

Clues Down

1. Slithers when it moves
2. Playful aquatic animal with dense fur
4. Looks like a small dinosaur
5. Similar to a pig or boar with fur
6. Another name for Macaw
9. A colorful hook-billed bird
10. Night birds of prey
14. Has thick wool, related to a camel
15. Small animal with flexible hinged body armor
16. Big cat, resembles a leopard
18. Has long limbs & tail, lives in trees
22. Bird with large colorful beak
25. Related to donkeys
27. Cold water mammal with flippers
28. Common spiders weave this type of web
29. Has a bushy tail and lives in a den

DINOSAUR QUIZ

FILL IN THE BLANKS.

1. The _____ was the world's largest meat-eater. It was 45-feet long and had a six-foot-long skull.
2. The "king" of dinosaurs was the _____.
3. Dinosaurs ruled the earth for more than _____ years.
4. The _____ had the longest neck of any other creature.
5. One of the stars in the Jurassic Park movies was the _____. It was a small, swift, smart carnivore living in the Late Cretaceous period.
6. The _____ had bony-plates running down the length of its back and spikes at the end of its tail.

DINOSAUR QUIZ

1. Gigantototaurus, 2. Tyrannosaurus rex, 3. 150 million, 4. Mammenchisaurus, 5. Velociraptor, 6. Stegosaurus

CROSSWORD PUZZLE

ANSWERS ACROSS: 1. Sloth, 3. Caiman, 7. Bear, 8. Tapir, 11. Macaw, 12. Llama, 13. Ant, 14. Anaconda, 17. Puma, 19. Bat, 20. Eagle, 21. Goat, 23. Condor, 24. Piranha, 26. Bees, 30. Boa, 31. Ocelot, 32. Beetles
 CLUES DOWN: 1. Snake, 2. Otter, 4. Iguana, 5. Fecary, 6. Arara, 9. Parrot, 10. Owl, 14. Alpaca, 15. Armadillo, 16. Jaguar, 18. Monkey, 22. Toucan, 25. Asees, 27. Seal, 28. Orb, 29. Fox

ANSWER KEY

2002 EDUCATION PROGRAMS



Zoodler Academy

Bring your toddler to our popular parent and child program for two. The Zoodler Academy provides a safe and friendly environment for children to meet animals and learn about nature. The program includes a story, craft project, touch table, and live animals.

TUESDAYS

2-3-Year-Olds: 3:30 to 4:30 P.M.

- November 05:** *Oh Baby!*
- November 12:** *Little Green Frog*
- November 19:** *Stripes or Spots?*
- November 26:** *Sunshine Animals*
- December 03:** *Reptilemania*
- December 10:** *Our Own Backyard*
- December 17:** *Animal Holidays*
- December 24:** *Christmas Eve - No Class*

THURSDAYS

2-4-Year-Olds: 1:30 to 2:30 P.M.

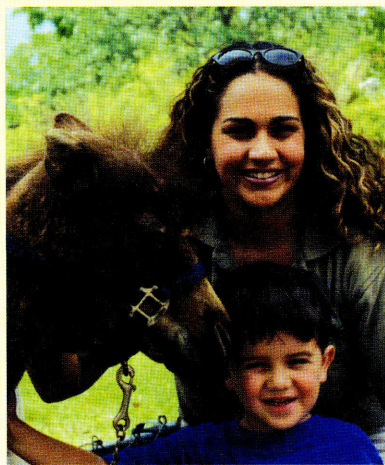
3-4-Year-Olds: 3:30 to 4:30 P.M.

- November 07:** *Oh Baby!*
- November 14:** *Little Green Frog*
- November 21:** *Stripes or Spots?*
- November 28:** *Thanksgiving - No Class*
- December 05:** *Reptilemania*
- December 12:** *Our Own Backyard*
- December 19:** *Animal Holidays*
- December 26:** *No Class*

COST PER CLASS:

Members: One Adult and One Child: \$13.00
Additional Participants (Infant through Adult): \$5.00 each
Non-members: One Adult and One Child: \$15.00
Additional Participants (Infant through Adult): \$6.00 each
Alumni of Zoodler Academy's 2001-2002 Season will receive a \$2.00 discount

Note: Class sizes are limited, and pre-registration is required. Additional participants must also enroll in advance to attend class.



Girls prepare to spend the night at a Zoo Inn.

Photo: Cecilia Betancourt

Zoo Inns



Bring your scout troop, youth group, biology class or adult group to spend the night! In this sleep-over program, you'll have a behind-the-scenes tour of the Zoo after dark and a morning activity or animal presentation. Zoo Inns are available for adults and children six years of age and older. Price includes a T-shirt, badge, pizza party and continental breakfast.

- Dates:** Every Friday and Saturday during the school year
- Time:** 6:00 P.M. – 9:00 A.M.
- Cost:** Members: \$42.00 per person
 Non-members: \$48.00 per person
 Minimum group size: 15
 Maximum group size: 30

Pre-registration is required. The program varies according to animal availability.



Feeding an Indian rhino one "Wild Night."

Photo: Carol Tomlinson

Wild Nights

Join us for a 2-3-hour behind-the-scenes tour of the Zoo after dark. The program includes a pizza dinner party and is available for adults and children ages six and older.

- Dates:** Available upon request.
- Time:** 6:00 P.M. – 9:00 P.M.
- Cost:** Members: \$22.00 per person
 Non-members: \$28.00 per person
 Minimum group size: 15
 Maximum group size: 30

For additional information or reservations, call the Education Department at (305) 255-5551.

Baby camel with Michelle Baez and a Zoodler.

Photo: Carol Tomlinson

AT THE ZOO!

WINTER'S HOTTEST EVENTS ARE HERE!

JURASSIC PARK: The Life and Death of Dinosaurs

STOMP BY NOW THROUGH JANUARY 3, 2003!

EXHIBIT HOURS: 10:00 A.M. - 4:30 P.M.

We're talking Really, Really, Really, Big Stars Here...

Watch where you stomp! That's no tree trunk; it's the leg of 72-foot-long, 24-foot-high *Mamenchisaurus* towering over the trees at Miami Metrozoo. Inside the Zoo's indoor, air-conditioned gallery see a dinosaur bigger than *Tyrannosaurus rex*. He's the largest meat-eating dinosaur ever unearthed. He's not big - he's *Giganotosaurus*!

- Walk among actual creatures from the *Jurassic Park: The Lost World* film in jungle scenes, including two 12-foot *Velociraptors*, a baby *Stegosaurus* and *Tyrannosaurus rex*. Alongside these film stars are casts of dinosaur skeletons including the *Bellusaurus*, *Stegoceras* and a variety of other dinosaurs from the Triassic, Jurassic and Cretaceous periods. This is one of the largest traveling collections of dinosaurs.
- Learn about dinosaurs through vividly posed interactive displays.
- Kids can dig for fossils in a re-created excavation pit.
- Experience the great extinction event through a multimedia, sensory presentation hosted by film star Jeff Goldblum in the "Extinction Theater."
- Play and learn about dinosaurs with a variety of hands-on activities, including stamping and rubbing stations, books and puppets.

For the last time in the U.S.! *The Dinosaurs of Jurassic Park: The Life & Death of Dinosaurs* is a family exhibit featuring re-created sculptures of the film's dinosaurs — alongside actual dinosaur discoveries and fossils. The exhibit explores scientific facts about dinosaurs and explains how artists and filmmakers combined science and imagination to create realistic-looking dinosaurs in the popular Steven Spielberg film, *Jurassic Park: The Lost World*.

For more information, visit the Zoo's website at www.miamimetrozoo.com

GUIDED PINE ROCKLAND WALK Meet your Zoo guide at the Warthog Exhibit and walk through the fascinating landscape of one of Miami's rare native pine rockland habitats. Learn about the pine rockland's geology, fire dependency, and some of its historic plants. Comfortable, sturdy shoes are recommended for walking on uneven terrain as well as a hat and sunscreen. Smoking is NOT permitted. Participants must be 13 years and older.

When: Weekly: Tuesday, Wednesday and Thursday

Time: 2:40 P.M. (Immediately after the Wildlife Show)

Cost: Members: Free, Non-members: Included in regular Zoo admission, Adult: \$8.95 plus tax, Child (age 3-12): \$4.75 plus tax

For more information, call the Education Department at (305) 255-5551.

FOOD DRIVE: NOVEMBER 1 - 20 Bring non-perishable food to the Zoo to donate to Meals On Wheels for Thanksgiving. There will be a food container at the entrance of the Zoo.

TOYS FOR TOTS: December 1 - 18 Bring a NEW, unwrapped gift for children ages 2-12, and make the holidays brighter for Miami's underprivileged children. There will be a toy container near the ticket counter as you enter the Zoo.

SEE THE ANIMALS OPEN HOLIDAY GIFTS Daily, December 1 - 25 You'll be hard-pressed to find something more fun to do during the holidays. Fun and comedy abounds as the animals open wrapped boxes filled with their favorite treats. Holiday gifts are part of the regularly scheduled Keeper Talks. Check at the Ticket booth for the feature animal of the day.



Face to face!

GET ON-LINE!

The membership department is up-dating its records, so please be sure to send your E-MAIL address to www.omena@zsf.org. We want to keep you up-to-date with the latest Zoo News and Special Events.

VOLUNTEER!

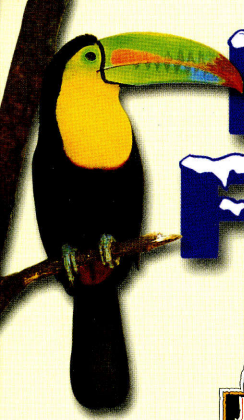
Find out how to be more involved in your Zoo. Call the Volunteer Services Office at (305) 255-5551, Extension 124.



FREE DINOSAUR FIGURINE

Get your FREE dinosaur souvenir from the Toucan Trader Gift Shop!

Limit: one dinosaur pvc figurine per coupon.
COUPON EXPIRES ON JANUARY 3, 2003.



MIAMI METROZOO FRIDGE CALENDAR



NOVEMBER 2002

THE DINOSAURS OF JURASSIC PARK:
Now Thru Friday Jan. 3, 2003

ZOO'S OPEN THANKSGIVING DAY:
Thursday 28



DECEMBER 2002

SEE THE ANIMALS OPEN THEIR
HOLIDAY GIFTS:
Daily, Sunday 1 - Wednesday 25



JANUARY 2003

TBA



FEBRUARY 2003

TBA



MARCH 2003

BALL OF THE WILD:
Saturday, 1

SPRING CAMP:
Monday 31 - Friday, April 4



APRIL 2003

EGG SAFARI:
Saturday 19 - Sunday 20

EARTH DAY:
TBA



MAY 2003

MOTHER'S DAY:
Sunday, 11



JUNE 2003

SUMMER ZOOFARI CAMP:
June - August

FATHER'S DAY:
Sunday 15



JULY 2003

FOURTH FEST



AUGUST 2003

COOL ZOO SUMMER
DR. WILDE'S WORLD
WINGS OF ASIA



SEPTEMBER 2003

KEEPER TALKS:
Daily, 11 A.M. - 3:30 P.M.

GRANDPARENTS' DAY:
Sunday 7



OCTOBER 2003

HOWLING BASH:
Friday 24

METROBOO!:
Saturday 25 - Sunday 26

Calendar events and dates are subject to change. For information on any of these events, please call the Zoological Society of Florida at (305)255-5551

Clip and save your Miami Metrozoo Fridge Calendar



ZOOLOGICAL SOCIETY OF FLORIDA
12400 SW 152nd Street
Miami, Florida 33177-1499

Nonprofit Organization
U.S. Postage Paid
Permit No. 4358
Miami, Florida