

TOUCAN TALK

DISCOVER YOUR ZOO!



Photo: Lily Formi

**PINE ROCKLAND
PAGE 2**

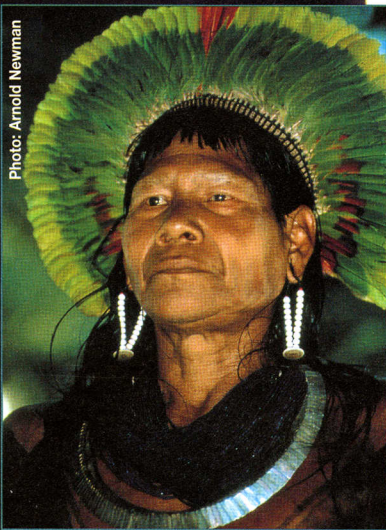


Photo: Arnold Newman

**DR. WILDE'S WORLD
PAGE 4**

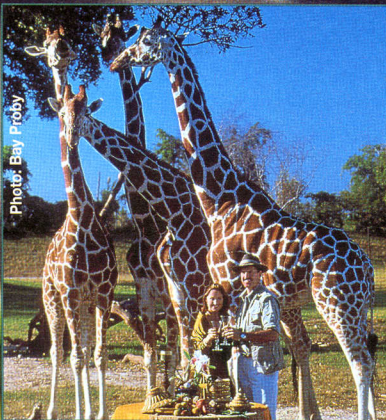


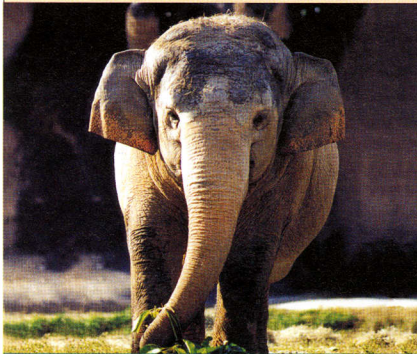
Photo: Bay Proby

**BALL OF THE WILD
PAGE 11**

**A FRIEND
FOR DAHLIP:
MEET NELLIE**

PAGE 9





Cover: Nellie the Asian elephant
Photo: Dolora Batchelor

Editor

Sherrie Avery

Creative Director

Maribel Moure-Medina
Moure Graphic Design, Inc.

Photos and Artwork

Sherrie Avery
Jeannette Aquino
Michelle Baez
Dolora Batchelor
Allison Benita, Student artist
Lily M. R. Forni
Ron Magill
Arnold Newman, Naturalist
Bay Proby
Gucci Sarno
Ricardo Stanoss
Tom Trump
Bill Tuttle
Steve Walker

Contributors

Sherrie Avery
Allison Benita
Lisa Berry
Cecilia Betancourt
Steve Connors
Glenn Ekey
Lily M. R. Forni
Mayra Gonzalez Rey
Cristina Heredia
Carol Lang
Jamie Lassonde
Daniel J. Licciardi
Ron Magill
Debbie Mucarsel
Maria Roberts
Gucci Sarno
Tom Trump
Bill Tuttle
Rachel Watkins Rogers

Printed on ♻ recycled paper with vegetable-based inks. Please recycle this publication when you are finished with it.

Copyright © 2001 Zoological Society of Florida. All rights reserved. No part of this publication may be reproduced by any means without permission of the editor.

Toucan Talk
Volume 28, Number 2
March / April 2001

Published six times each year as a benefit to the members and supporters of Metrozoo.

Please be advised that any use of the Zoological Society of Florida's name or position, whether written or implied, is prohibited without the written consent of the Society's directors or officers. Should you desire endorsement of any type, please contact the office of the Zoological Society of Florida.

Zoological Society of Florida
Glenn Ekey, Executive Director
Daniel J. Licciardi, President

Miami Metrozoo
Eric Stephens, Director
12400 SW 152nd St., Miami, FL 33177-1499
Tel: (305) 255-5551
Fax: (305) 255-7126
www.zsf.org

Zoo Visitor Information: (305) 251-0400

THE PINE ROCKLAND AT MIAMI METROZOO

By Lily M.R. Forni
Recreation Specialist

Photo: Lily Forni



Do you know what a pine rockland is? Only South Florida has *Pinus elliottii* var. *densa*, also known as South Florida slash pine ("slash" refers to cuts in the bark made by humans to collect resin), or Dade County pine, to the locals. The slash pine forest grew on the Miami Rock Ridge, interspersed with areas of transitional habitat such as the hardwood hammock.

Oolitic limestone began forming 100,000 years ago below the sea, creating a ridge that was raised up like a bony spine above the surrounding wetlands. This limestone is a silver-colored rock that appears hard but is made porous through a chemical reaction to acid. The Richmond Pineland tract, which surrounds Metrozoo, covers 853 acres. The pine rockland is considered globally imperiled, and we are grateful to have this unique habitat in our own backyard.

Unfortunately, this native treasure may disappear before most South Floridians learn to appreciate it. In the late 1800s, there were 185,000 contiguous acres in a wide swath along our eastern shore, but today only about 2% of the original habitat is left outside of the Everglades.

Miami-Dade's natural treasure is unique, diverse and fascinating.

The pine rockland is rocky, sandy and flat all at once. Tiny plants, wildflowers, bushy shrubs, palms and the

towering pines are interspersed together. At first glance the pine rockland appears open, airy and sunny; yet the ground may be thick with prickly plants hiding all kinds of fascinating native animals. When exploring this endangered area, stay on an established path, steering clear of saw palmetto, as it is protected with sharp teeth along the leaf stem. Beware of poisonwood as it shows no outward warnings of its burning irritations to the skin of an inexperienced hiker.

This habitat and its flora and fauna evolved and adapted to natural disasters and change in unique ways. Lightning ignites wildfires at the beginning of the wet season when fuel is naturally abundant. The pine rockland habitat can not only tolerate fire, but

also reaps some benefits from it. Among these benefits is the residual ash, which recycles nutrients. Fire tolerance gives slash pine an edge compared with other trees more likely to be destroyed; thus, succession growth is reduced.

Slash pine seeds are protected from fire by remaining in a grass stage for several years after germination with needles wrapped tightly about the bud. Meanwhile, a strong taproot grows down into a crevice, binding the young plant securely to the oolitic limestone. Fire may burn the outer layer of needles, but the bud remains unharmed and grows. Moreover, the outer layer of a growing pine tree's bark protects the interior cambium layer during a fire. A fully mature slash pine has branches only at the upper end of its trunk. This offers fire

Photo: Lily Forni





Photo: Ricardo Stamos



protection to the tree itself, and also benefits the entire habitat by increasing sunlight to the forest floor and providing conditions optimal for seed germination.

Coontie plants, used by early South Dade inhabitants to make starch, have another fire-protecting mechanism. The plant has an underground stem that acts like a storehouse for nutrients. After a fire, the coontie continues to grow, using its stored supply of nutrients.

After the smoke is gone and animals are still scattered, the habitat appears devastated and austere. The black soot and charred remains make an intense visual impact on the visitor. The air smells fresh, yet it is heavy with the powerful scent of fire. It seems too quiet and too still. Within a few weeks, tender young shoots sprout, such as milk pea, whose roots were buried safely underground. Other plants will flourish, and the pine rockland habitat will be rejuvenated and healthier for the next several years as a direct result of the fire.

If you look carefully, you can find two very small, endangered pineland plants. Deltoid spurge spreads over oolitic limestone with its roots reaching through the crevices, or it grows in sandy pockets. Small's milkwort grows only in the pockets of sand that accumulate in depressions between the rocks.

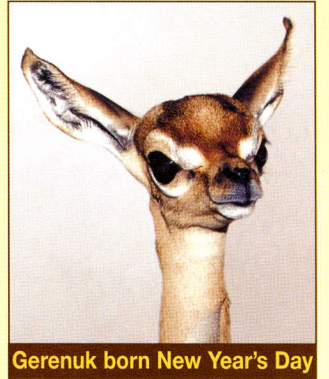
The pine rockland calls to us as the wilderness will. It is indeed a special place, with its own unique beauty. Some parks, schools and even neighborhoods are trying to increase a natural pine habitat around them. The pine rocklands are gaining headway through Miami-Dade County's Environmentally Endangered Lands (EEL) program, and you can help by supporting local conservation efforts. If you visit a pine rockland area, remember to stay on an established trail and carry your own litter bag along with your other personal supplies.

Miami Metrozoo is pleased to provide pine rockland tours. To make a reservation for school field trips and group tours, contact the Group Sales Department at (305) 251-0400, extension 230.

NEW ANIMAL BABIES

New Year and New Millennium Baby!

Male gerenuk born January 1, 2001



Gerenuk born New Year's Day

Births and Hatchings

- 1 Male Nile lechwe – October 23, 2000
- 1 Female Nile lechwe – October 29, 2000
- 1 Male yellow-backed duiker – November 23, 2000
- 1 Undetermined yellow-backed duiker – December 3, 2000
- 1 Female bongo – December 5, 2000
- 1 Undetermined Nile lechwe – December 17, 2000
- 2 Male gerenuks – December 21 and 25, 2000

Acquisitions

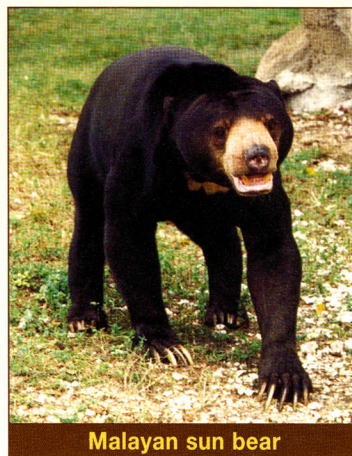
- 1 Male Mandarin rat snake – November 2, 2000
- 1 East indigo snake – November 28, 2000
- 3 Male & 2 female squirrel monkeys – October 24, 2000
- 1 Male & 1 female Parma wallabys – October 26, 2000
- 1 Male & 1 female Bennett's wallabys – October 26, 2000
- 1 Male Malayan sun bear – October 27, 2000
- 1 Female Asian elephant – December 5, 2000



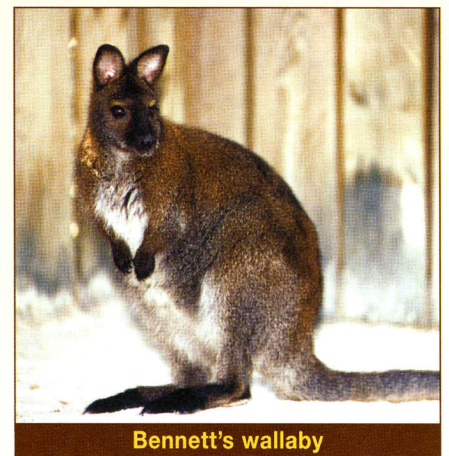
Parma wallaby



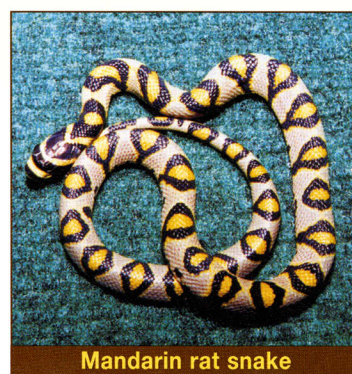
Bongo



Malayan sun bear



Bennett's wallaby



Mandarin rat snake



Nile lechwe

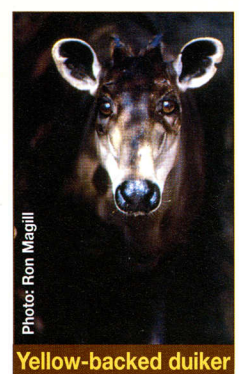


Photo: Ron Magill

Yellow-backed duiker

Photo: Dolora Batchelor

Photos: Dolora Batchelor

Dr. Wilde's World



By Ron Magill,
Metrozoo Communications Director
&
William B. Tuttle,
Metrozoo Art Director



Photo: Arnold Newman

Photos: Ron Magill

This year one of the most eagerly awaited exhibits in Miami Metrozoo's history will open – Dr. Wilde's World! For the first time, Metrozoo will have a magnificent air-conditioned, indoor gallery to showcase permanent, seasonal and traveling exhibits featuring varied topics, regions of the world, and cultures.

Surrounded by a beautifully landscaped plaza, the Zoo's newest \$2,500,000 facility enables us to provide hands-on, interactive educational adventures for the entire family.

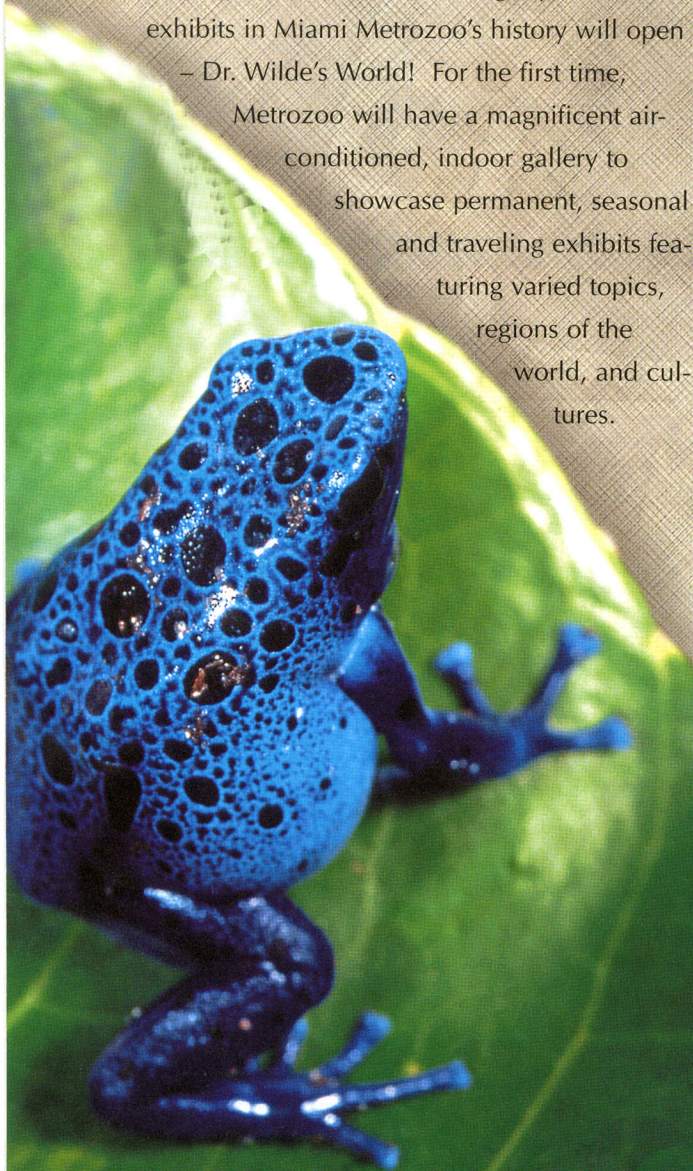
There's an explorer in each of us, and this fabulous exploration center will feature our wonderful natural and cultural world through the experienced eyes of Dr. Beatrice Wilde, a fictitious international conservationist and naturalist, developed from the creative imagination of Miami Metrozoo and ZSF staff. We felt it important that Dr. Wilde not fit the old stereotyped images of the elderly, wizened scientist with pith helmet and knobby knees. The character, we agreed, would need to appeal to people of all ages, and especially to children; but most of all, we wanted the character to appear to be real. As we worked on developing the central character of the exhibit, Ron Magill, Metrozoo's Communications Director, realized we were actually describing someone he knew!

You met her last month in the January/February, 2001 issue of *Toucan Talk*. Lori Gibson, an American naturalist living in Panama, who has in the

past collaborated with Ron Magill on various Zoo-related projects in South and Central America, will portray Dr. Wilde. Not only does Lori embody the characteristics we wanted for Dr. Wilde, but during the past two years, Lori and Ron have been working together to develop the artifacts, collections and other objects that will comprise the first exhibit at Dr. Wilde's World – Tropical America.

Tropical America includes southern Mexico, Central America, and northern South America. Within Dr. Wilde's World, you will be immersed in the sounds of the tropical rainforests ranging from frogs and insects to harpy eagles and howler monkeys. Dr. Wilde will talk to you while she's in the field via several video screens located throughout the exhibit. You may even be lucky enough to catch her in person (portrayed by Lori Gibson) during one of her visits to the center!

More than just displays to look at, this new air-conditioned 7,200-square foot exhibit invites visitors to touch and investigate a wide variety of artifacts and unique specimens. Whether searching for tiny marvels through a microscope, or using binoculars to find animals and





Logo Art: Bill Tuttle

Photos: Ron Magill

other items hidden throughout the center, the adventures at Dr. Wilde's World are sure to engage the explorer in all of us!

As you walk through the front door, Dr. Wilde greets you from a television monitor in her office where you will learn more about her and what motivates her to explore and collect. While perusing the books in her personal library, you will be encouraged to read about the rainforest and all it has to offer. Children will be invited to work with interactive puzzles and rub crayons over embossed images of various plants and animals from the rainforest region. Workstations with microscopes and wentscopes will enable visitors to discover microbiology in the plant and animal world.

Suddenly, you will hear the incredible sounds of wild animals. Entering into the **Discovery Theater**, your eyes will be riveted to the 100-inch *BatchelorVision* video screen with surround sound. You will be transported into the very heart and soul of the mysteries of the Tropical American rainforest.

Three discovery zones invite you to open cabinet drawers to discover the treasures from the Tropical American rainforest held within.

The **anthropology** discovery area will feature artifacts and crafts made by indigenous rainforest people. You will see tools and hunting implements as well as beautiful feathered headdresses exhibited in specially designed cases. Handwoven baskets and handcrafted pottery are examples of the creative versatility of the native people of Tropical America.

Live animals will be displayed in the **zoology** section. A 500-gallon tank with fish from the Amazon River will command a dominant spot in the room along with amphibians, reptiles and insects. Animal skulls will be in several of the cabinet drawers for you to examine.

The fascinating world of plants will come to life in the **botany** area. You will be amazed how many plants, existing ONLY in this region of the world, are key ingredients in the medicines we use every day and in the foods we take for granted.

A stunning 30' by 8' mural of the Tropical

American rainforest, painted by renowned scientific illustrator Sharon Belkin, will depict plants, native wildlife and indigenous people. The mural will be discussed in detail at four interactive workstations.

Breathtaking enlarged images and murals will provide an unforgettable window into a world we know very little about, yet profoundly affects us all.

A three-paneled wall containing 45 images will individually and simultaneously flash slides of the beauty the rainforest has to offer, impressing upon us the importance



of keeping this last frontier of nature intact for future generations.

Before leaving Dr. Wilde's World, you will want to browse the gift shop for unique items that pertain specifically to the current exhibit.

As you exit the building, you will embark upon an adventure along the tropical rivers of the

world. The courtyard will seem alive with large sculptures of hippos, crocodiles, rhinos, elephants and other animals from river habitats around the world, partially submerged in a blue-green resilient surface material simulating water. Children will be able to touch and safely climb these animal sculptures as part of the Dr. Wilde's World experience. Palm trees and native grasses will enhance the river landscape, and large specimen trees and chickee huts built by native African artisans will provide shade for you to relax and enjoy the plaza.

Dr. Beatrice Wilde has given Miami Metrozoo an exceptional gift by allowing us to see a wonderful world through the eyes of an experienced, world-traveled scientist. She has very generously brought to Metrozoo her priceless collection of artifacts, photographs, and other mementos of her incredible journeys for this unprecedented exhibit. Her hope is

that you will learn to understand and appreciate that Dr. Wilde's World is indeed our world, and it's up to us to protect it for generations to come.

Be sure to keep your membership current so you won't miss out on all the special exhibits and events that will be taking place in Dr. Wilde's World!

Member's Programs For March And April

For your convenience, please use the registration form on page 8 to make a reservation for these programs.

Zoodler Academy



2-3 year olds

Dates: Thursday, March 8 – *What's For Dinner At The Zoo?*
 Thursday, March 22 – *Monkey See, Monkey Do!*
 Thursday, April 12 – *Bearly Good Time*
 Thursday, April 26 – *Creepy Crawly Spiders*

3-4 year olds

Dates: Thursday, March 1 – *Asia Will Amaze Ya!*
 Thursday, March 15 – *Furry Friends*
 Thursday, March 29 – *Stripes & Spots For Tiny Tots*
 Thursday, April 19 – *Rodent Rascals*

Time: 3:30 p.m. – 4:30 p.m.

Cost: Members \$8.00; Non-members \$10.00
 (Price includes one adult and one child; \$4.00 per each additional child.) **Children must be accompanied by an adult.**

Zoo Babies

Metrozoo's family is growing fast, so come and meet some of our newest residents! Children embark on a narrated tram tour to discover Zoo babies and learn about their family lives. Available for adults with children ages 3-5.



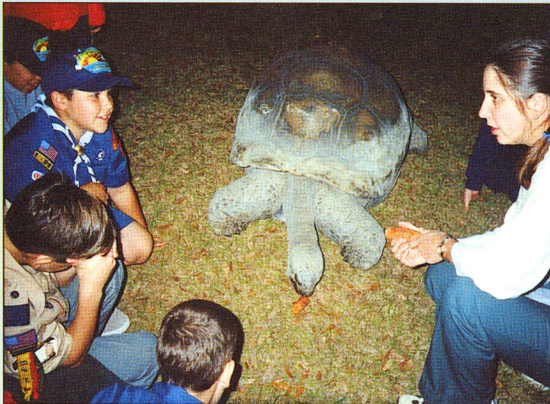
Date: Sunday, March 11, 2001

Time: 9:30 a.m. – 11:00 a.m.

Cost: Members \$10; Non-members \$15
 (Price includes one adult and one child; \$4.00 per each additional child.) **Children must be accompanied by an adult.**

"Wild Nights" at Metrozoo

Join us for pizza and a fun behind-the-scenes adventure!
 Families (children 6 and older).



Dates: Wednesday, March 14, 2001
 Wednesday, April 18, 2001

Time: 6:00 p.m. – 9:30 p.m.

Cost: Members \$20.00,
 Non-members \$25.00

Spring Break Camp

School's out! Let's get wild! How would you like to spend your spring break with some amazing animals? Come to camp and enjoy unique behind-the-scenes tours, feedings, and animal crafts. Interact with live animals in a safe and friendly setting. Campers bring their lunch; we'll supply snacks, crafts, and lots of fun! Children ages 4-12



Dates: April 2 – 6, 2001

Time: 9:30 a.m. - 3:30 p.m.

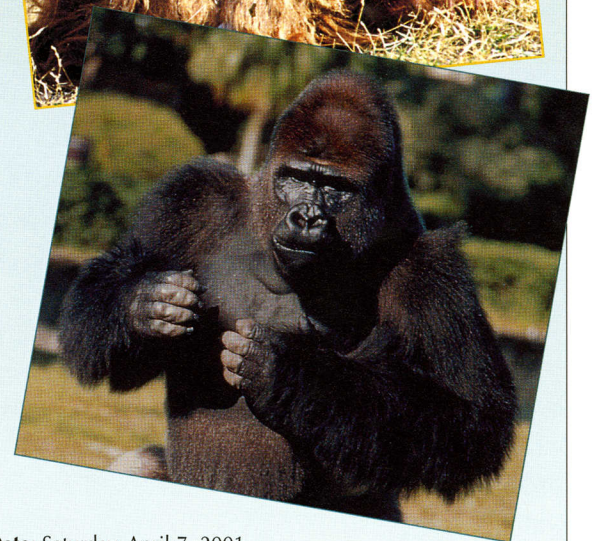
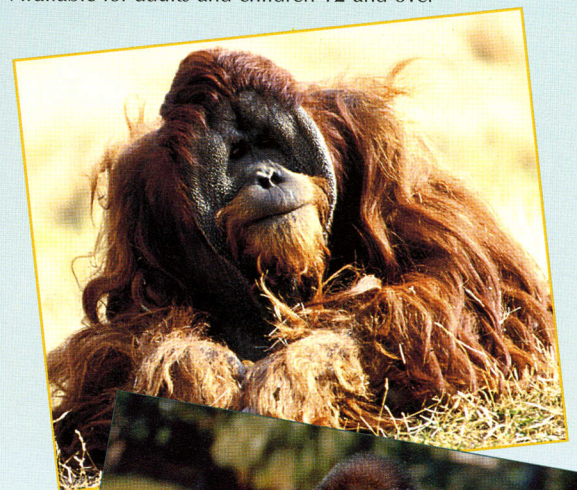
Cost: Members \$100.00; Non-Members \$120.00

Early morning drop-off is at 8:30 a.m.
 There is an additional cost of \$10 per week per child.

After camp care is from 3:30 – 5:00 p.m.
 There is an additional cost of \$20 per child.

Date With The Apes!

Spend a Saturday afternoon with our chimpanzee and gorilla families. Enjoy a special presentation on great apes, followed by snacks and refreshments. Learn about ape conservation and research.
 Available for adults and children 12 and over



Date: Saturday, April 7, 2001

Time: 2:00 p.m. - 3:30 p.m.

Cost: Adult Members \$8
 Adult Non-members \$10
 Child Members (ages 3-12) \$4
 Child Non-members \$6

A "Bear" Necessity



This program is sure to answer any questions you've ever had about bears. Join us for a unique behind-the-scenes tour of the sloth bear exhibit. Make bear "treat boxes" filled with dried fruits that will have the bears ro-o-oar-r-ring for more!

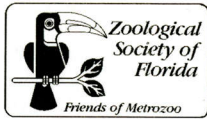
Date: Saturday, April 28, 2001

Time: 10:00 a.m. - 12:00 p.m.

Cost: Adult Members \$8
 Adult Non-members \$10
 Child Members (ages 3-12) \$4
 Child Non-members \$6

Reservations are required. Registration cannot be processed unless the registration form (on page 8) is completed in full and mailed to the Zoological Society of Florida.

The Zoological Society of Florida
12400 SW 152nd Street
Miami, FL 33177-1499



Zoological Society of Florida

I want to help support the Zoological Society of Florida's work at Miami Metrozoo. Enclosed is my tax-deductible donation:

___ \$1,000 ___ \$ 500
___ \$ 250 ___ \$ 100
___ \$ 50 ___ \$ 25
___ Other amount: \$ _____

We are grateful for donations of any amount and ask that you be as generous as possible.

My donation is for:

___ General support of ZSF's programs
___ ZSF's Adopt-An-Animal program
Specify animal _____
___ My gift is in honor, or in memory of _____
Notification to _____

___ I enclose a check made payable to Zoological Society of Florida.

___ I wish to pay by credit card:
___ VISA ___ Amex ___ MC ___ Other
Card # _____ Exp. Date _____

Signature _____
Date _____

The Zoological Society of Florida (ZSF) is a non-profit 501(c) 3 organization under the IRS Code. It is registered with the State of Florida under the Solicitation of Contributions Act, Chapter 496, Florida Statutes. A copy of the official registration and financial information may be obtained from the Division of Consumer Services toll-free in Florida: (800) 435-7352.

Please Help Us Update Our Records:

Name _____

Home Address _____

City _____

State _____ ZIP _____

Telephone () _____

E-mail address _____

Business (if applicable) Title: _____

Address _____

City/State/ZIP _____

Phone () _____

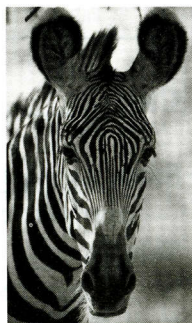
e-mail _____

Adopt An Endangered Species!

For many animals on the Endangered Species List, survival is a rare gift. You can give them that gift. Sponsoring an animal through Metrozoo's Adopt-An-Animal Program will help Metrozoo participate in conservation and preservation programs fighting for the survival of these species. Give the gift of survival and make a bold statement of your commitment to our planet's wildlife.

Adopt-An-Animal makes a wonderful gift for any animal lover, and everyone will take great pride in knowing they've done their part in saving these irreplaceable animals.

- \$100** Colobus monkey
- Flamingo
- Gerenuk
- \$75** African Cape hunting dog
- Asian small-clawed otter
- Blood python
- European stork
- Galapagos tortoise
- Cuban crocodile
- \$50** African white-backed vulture
- Bactrian camel
- Black-necked swan
- Boa constrictor
- Cuban tree duck
- Leopard tortoise
- \$25** Friend to any animal of your choice



Other endangered animals include the: clouded leopard, Siamese crocodile, Komodo dragon, siamang ape, chimpanzee, gibbon, Grevy's zebra, koala, Malayan tapir, onager, orangutan, sable antelope, Bengal tiger, lowland gorilla, Indian rhinoceros, black rhinoceros, African elephant.

2001 SUMMER CAMP AT MIAMI METROZOO

How would you like to spend a couple of weeks feeding, touching, and learning about some of the world's most amazing animals? This is exactly what Zoofari campers experience during the nine weeks of Zoofari Camp. For the entire summer, participants between 4 and 17 years of age will enjoy wildlife from around the world.

Campers learn fascinating facts about animal behavior, adaptations, diet and learning ability. "Why do tigers have stripes?" "How many teeth do elephants have?" "Do all cats purr?" These questions and many others will be answered during interactive presentations with live animals.

Zoofari Camp at Miami Metrozoo is fun and educational!

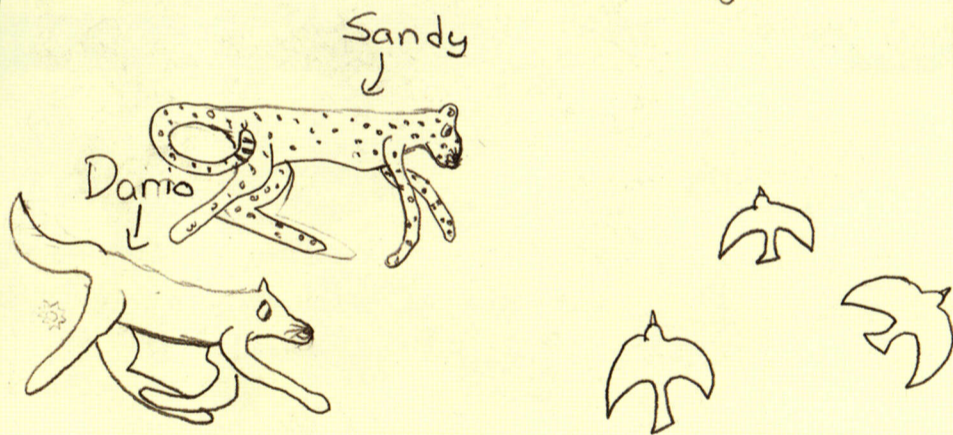
To enroll your child, complete and mail the registration form on page 8, or call (305) 255-5551 for information.

Allison is an 8 - year - old student at Pinecrest Elementary School.

The Cheetah named Sandy

Once there was a cheetah who found herself in a forest full of unfamiliar animals, like toads, and salamanders. The cheetah's name was Sandy short for Sandra. So Sandy tries to get out but the forest is just a maze that leads to nowhere! She teams up with an African Cape hunting dog, who also wants to leave the forest, his name was Dario. They were good friends until Dario got mad at himself for not finding the end. Sandy thought he got mad at her, so they started yelling at each other then they split up and they got lost. They soon bumped into each other and they both saw a lion they were scared because lions eat cheetahs and are bigger than a Cape hunting dog so Dario sighed and said, "I think we'll have to fight the lion". Then Sandy pounced and Dario jumped and killed the mechanical lion... Then went back to the savanna.

The End



By: Allison Benite

An appreciation for wildlife starts early for young Zoofari campers.



SUMMER ZOOFARI CAMP 2001

Session A:

African Adventure

Gorillas, giraffes, lions, cheetahs! These animals and many others will be the focus of this unforgettable experience.

Awesome Australia

Many of the most unusual animals live down under. In this session, you'll learn all about the behavior and unique adaptations of Australian animals.

Session B:

Explore Asia

In this session campers explore Asian wildlife by visiting and interacting with some of the most rare and fascinating animals of the world!

The Wild Side of the Americas

Campers will learn about the incredible diversity of wild animals in all the Americas and strategies for conserving them.

Teen Zoologist:

This session is dedicated to the training of teen volunteers who assist with different areas of the Zoo, such as the Children's Zoo, special events and the Zoo camps. Upon completion of the training program, teens are eligible to join the Zoo Volunteer Team. Teens must apply and will be interviewed and evaluated. Volunteers are required to assist with one week of Summer Camp. Join us for a thrilling experience.

Teen Zoologist (14-17 years old)

June 18-22

Zoolife (11-13 years old)

June 18-22

Kindercamp Session A (4-6 years old)

June 25-29

July 9-13

July 23-27

August 6-10

Kindercamp Session B (4-6 years old)

July 2-6*

July 16-20

July 30-August 3

August 13-17

Zoofari Session A (7-10 years old)

July 2-6*

July 16-20

July 30-August 3

August 13-17

Zoofari Session B (7-10 years old)

June 25-29

July 9-13

July 23-27

August 6-10

* Camp will be held on July 4.

Time: 9:00 a.m. - 3:30 p.m.

Cost: Members \$125

Non-members \$145

Early morning drop-off is at 8:30 a.m. There is an additional cost of \$10 per week per child.

After camp care is from 3:30 - 5:30 p.m. There is an additional cost of \$25 per week per child.

- \$10 discount with 2 or more weeks registration, or
 - \$10 discount with 2 or more siblings.
- Only one discount per family*

Please provide your child with lunch.

All Summer Zoofari Camp programs are subject to a \$30 cancellation fee if cancellation is made ten days or less prior to the program date.

Zoological Society of Florida All-Program Registration Form

Participant's Name: _____ Street Address: _____ City _____ State _____ Zip _____
 Daytime Phone: _____ Evening Phone: _____ Are you a Member? Yes No Membership # _____
 Payment Enclosed: Check # _____ MasterCard _____ Visa _____ AMEX _____ Credit # _____ Expiration Date _____
 Customer Signature: _____ Total Camp or Program Fee: _____

Participant Information

Parent/ Guardian's Name _____ Contact Phone: _____ Age/Grade of Child _____
 Program: _____ Date _____
 Session: _____ Date _____
 Session: _____ Date _____

Campers Only/Camper's Medical Information

Physician's Name _____ Phone: _____ Dentist's Name _____ Phone _____

In an emergency, if the parent, guardian, or designated physician/dentist cannot be reached, I authorize the Zoological Society of Florida to transport and/or obtain medical services from any physician/dentist for my child.

Signature of Parent/Guardian: _____ Date _____

Please indicate any medical conditions or health problems of which the Camp staff should be aware. Please describe: (if you require further space, please use a separate sheet of paper):

Allergies _____ Handicap _____ Prescribed Medications _____ Other _____

(your signature below gives permission to Camp staff to dispense only required medications you send with your child. Please provide the prescribed container, paraphernalia necessary for taking medications, and explicit instructions on a separate sheet of paper.)

Name of Person(s) Who Will Pick Up the Child

Name _____ Relationship _____ Second name _____ Relationship _____ Phone# _____

Vehicle Information: Make _____ Color _____ Tag # _____ 2nd Vehicle: _____ Color _____ Tag # _____

I give permission for my child to participate in the Zoological Society of Florida camp or other program as indicated above. I have read the registration and medical sections and have supplied accurate information. My child can be photographed and his/her picture used for public relations purposes.

Signature of Parent/Guardian: _____ Date _____

RESERVATIONS ARE REQUIRED, and registration cannot be processed unless this form is completely filled out.

For reservations, please call the Education Department at (305) 255-5551 and mail registration form to Zoological Society of Florida/Education Department, 12400 S. W. 152nd St, Miami, FL 33177-1499.

ZSF Board President: Daniel J. Licciardi

ZSF's new Board President is Dan Licciardi, Vice President and General Manager of Miami Jai-Alai. Dan has volunteered his time to the Zoological Society of Florida since 1984, first serving as a member of our Board of Trustees, and then as a member of the Board of Directors since 1994.

For several years, he filled the role of Vice President and Chair of the Planning Committee, and his efforts brought significant long-term benefits to Miami Metrozoo. In 1996, Dan's work on the Citizens' Committee for the Trust For Public Lands/Safe Neighborhood Parks campaign contributed to the passage of the bond issue benefiting the Zoo and all Miami-Dade parks.

Under Dan's leadership, Miami Jai-Alai's support of the Zoological Society of Florida has taken a variety of forms. The company schedules a number of Charity Days throughout the year, and donations from some of the proceeds have provided critical operating support for our organization. Miami Jai-Alai has also been one of the sponsors of Feast With The Beasts and Ball of the Wild; has made it possible for scouts



with disabilities to enjoy the Zoo; and has underwritten the cost of the Zoological Society's animal cards, a highly effective tool for teaching about endangered species.

In addition to his service as ZSF President, Dan is a member of the Iron Arrow Society of the University of Miami and the Hurricane Club. He received his Bachelor of Science degree from the University of Miami in Biology with majors in pre-med and marine biology, and various post-graduate programs in business and business management. Mr. Licciardi is an avid nature lover, scuba diver and weight lifter.

"There is much that is new and exciting at the Zoo these days," commented Mr. Licciardi. "We have opened exhibits for endangered Andean condors, Cuban crocodiles and playful African meerkats. During the holidays the Zoo was aglow with dazzling light displays and holiday cheer, when we welcomed thousands of visitors at night! As we usher in the new millennium in 2001, we look forward to the opening of Dr. Wilde's World, followed by the majestic new Aviary in 2003. Miami Metrozoo is a community treasure making a difference in the lives of people and wildlife everywhere."

A Friend for Dahlip

By Steve Connors, Metrozoo General Curator

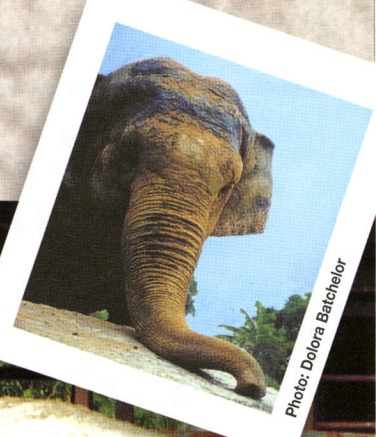
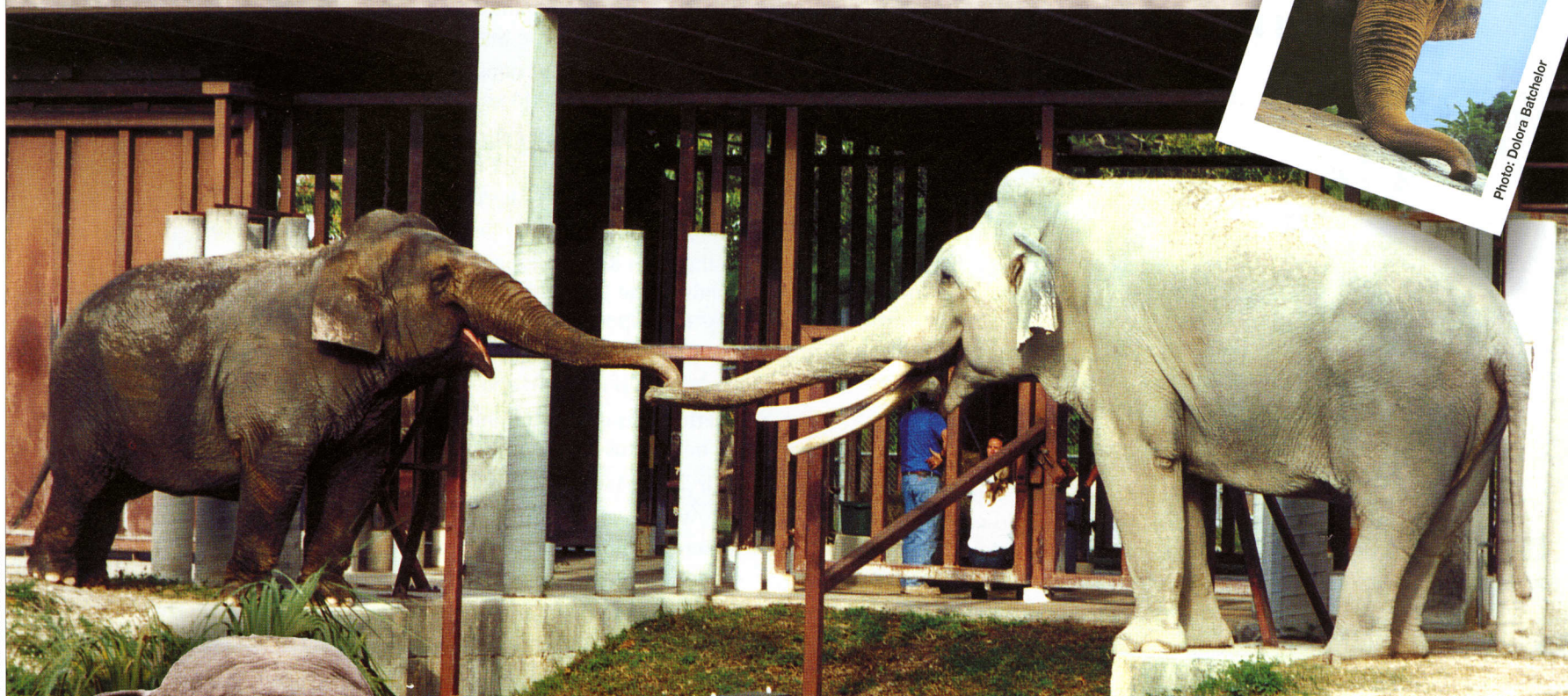


Photo: Dolores Batchelor

"Dahlip," our 34-year old male Asian elephant, has been living alone for quite some time; and as elephants are social animals, we have been trying for a long time to find a companion for him. We are happy to announce that we have found what we hope will be a perfect breeding companion for Dahlip. Her name is "Nellie," and she's a 31-year old Asian elephant.

Dahlip has a long and interesting history. He was born at a zoo in India in 1966 and came to Miami the following year, weighing in at a petite 1,000 lbs. He grew up and spent nearly 30 years with keeper Bill Doss, who has since retired. Theirs was a close relationship — from the time he arrived at the Crandon Park Zoo right through his stay here at Metrozoo. Dahlip sired a calf and survived

Hurricane Andrew, although we had to place him elsewhere temporarily while the Zoo was recovering from the devastation of the hurricane.

Nellie was wild-born in India and has traveled the eastern half of the U.S., working at various county and state fairs and other events. She's been featured on TV commercials and graced magazine covers.

Nellie has never lived with a male elephant, so this will be a new experience for her. We'll just have to wait and see how compatible Dahlip and Nellie prove to be. At the very least, Dahlip has a companion. If all goes well, these two could have a large, long-nosed, wrinkled bundle of joy.

Dear Member:

Working in partnership with the Zoological Society of Florida, and with the generous support of our community, Miami Metrozoo has become one of the nation's top ten zoos, and one of the finest and most visited cultural institutions in Florida. Much lies ahead as we prepare to extend our presence through partnerships, community outreach, new exhibits and conservation. Our new Education Center, Dr. Wilde's World, which will open this year, will provide interactive exhibits that are intended to educate and develop the minds of thousands of children that come to the Zoo every year.

That is why our members, friends, and supporters are so important to Miami Metrozoo. Our strongest allies, our most committed supporters, our members, are the main leaders of this vital organization. Your intellectual as well as financial engagement is and always will be important in achieving our mission – to encourage an appreciation for the world's wildlife and to help conserve it for future generations.

For your convenience we have attached a return envelope that enables you to support ZSF's programs and all they accomplish to enhance the Zoo. For those of you who have been contributing over the years, I thank you for helping us make this institution one of the best in the country.

Sincerely,



Glenn Ekey
Executive Director
Zoological Society of Florida

Carol Lang

Elected President of DOVIA



Carol Lang, Santa and Glenn Ekey

Carol Lang was elected as the 2001 President for the Miami-Dade Chapter of Directors of Volunteers In Agencies (DOVIA). DOVIA is an association of leaders of volunteer programs with the purpose of providing networking opportunities & professional development for people who manage volunteers, and to increase awareness of volunteerism in the community.

Lang has been with DOVIA since she was appointed Manager of Volunteer Services with the Zoological Society of Florida in 1996. She has served as Treasurer for DOVIA for the past two years.

Lang says that her goal is to lead the organization in gaining heightened awareness in the South Florida community of the professionalism and talents of volunteer leaders. "It is actually a profession in itself," remarked Lang.

THANKS TO OUR WONDERFUL SPONSORS AND DONORS

- To **Lucent Technologies** for being the presenting sponsor, the second year in a row, for the Zoological Society of Florida's annual fundraiser, Ball of the Wild;
- To **Jennifer Getz** for chairing Ball of the Wild;
- To the wonderful sponsors who made Wild Lights at Metrozoo a successful evening family event throughout the 6-week holiday season: **The Miami Herald; El Nuevo Herald; Toys "R" Us; City Furniture; Gibraltar Bank; Imperial Majesty; Jackson Health System; Knight Ridder; Our Lucaya; Security Management; The Christmas Shoppe; CBS4; NBC6; PAX TV; Majic 102.7 FM; Lite 101.5 FM;**
- To the sponsors of Jungle Jog 2001: **CONTRIBUTING SPONSOR: Price Waterhouse Coopers; SUSTAINING SPONSORS: Butler, Buckley & Deets; Home Financing Center; United Healthcare; PATRON SPONSORS: Executive Staffing, Inc.; First National Bank of South Miami; Gulliver Academy, Inc.; Florida College of Natural Health; Hamilton Bank Foundation, Inc.; Miami-Dade County Local 1403 Firefighters; Stanfill Funeral Homes; Stonyfield Farm; YW Associates, Inc.; Zap Courier; IN-KIND SPONSORS: Broadcast Quality, Inc.; Caribe Food Corp.; Crystal Springs; Einstein Brothers Bagels; Happy Balloons, Inc.; Miami's Community Newspapers; Miami Subs Grill; Mobile Chiropractic; Moure Graphic Design, Inc.; Publix; Screen Craft; Skags Office Products; The Clothing Warehouse; Marcie Ziv;** (ARTIST: Marcie Ziv. This is not the first time Marcie Ziv has generously donated her original art to the ZSF. Her colorful sculpture of the giraffe enhances the entrance to the ZSF building);
- To **Carnival Cruise Lines** for underwriting the Carnival Kids program! Thanks to Carnival, children from Bunche Park, Comstock and Frances S. Tucker Elementary Schools enjoy conservation education at Miami Metrozoo, at school and in the Everglades;
- To **Lillian Shustak**, mother of Board member Thea Katzenstein, who made a gracious donation to the Zoological Society of Florida. We extend our deepest sympathies on the passing of Lillian Shustak to her family;
- To the 394 wonderful people who responded to ZSF's Year-End Appeal exceeding the \$20,000 goal we had set;
- To the **Sara Woodruff Foundation** and the **Florida Division of Cultural Affairs** for supporting the work of our organization;
- To **Marc and Robin Osheroff**; the **George B. Storer Foundation**; and the **Chingos Foundation** for their generous gifts to the Zoological Society;
- To the **Ruth & August Geiger** and **Bastien Foundations**; and the **Lewis Funds of the Jewish Community Foundation of Cleveland** for their kindness in supporting our work;
- To **Manny Rodriguez** and **Florida Power & Light (FPL)** for leading the Corporate Membership Program and joining the Scarlet Macaw Corporate Circle;
- To **Eric Annison** (A&W Annuals) and **David Miller** (Harold B. Martin, Inc.) for helping us beautify Miami Metrozoo;
- To **Irvin & Marjorie Korach** for supporting our mission and their love for the Zoo;
- To **Ferdinand Phillips** for his continued support to the Zoological Society of Florida and Miami Metrozoo;
- To all the **volunteers** who give of their time, skills and service.

Dear ZSF Members:

It is a privilege and an honor to be able to serve the Zoological Society of Florida and Miami Metrozoo. We are blessed with a tremendous staff at the Society and the Zoo, as well as having a wealth of support to draw upon from the Society's Boards and the County government. The partnership of the Society and Miami-Dade County has positioned the Zoo, already considered one of the top 10 zoos in America, to become one of, if not the Country's finest.

Our support as members of the Society is critical not only economically, through dues and donations, but also socially, bringing our pride and our mission to the community. With this support, we will be able to reestablish Metrozoo as a community asset, a

crown jewel of Miami-Dade County for residents and tourists alike.

Incumbent in this mission is the need to make our Zoo a resource for all of South Florida's residents, particularly the children. My goal is to ensure that all Miami-Dade County children have the opportunity to visit the Zoo and experience the wonders that we all cherish. Metrozoo continues to add new exhibits that will greatly enhance that experience. These additions include the meerkats and the inaugural holiday Wild Lights display, as well as the new hands-on interactive and immersion exhibits, such as Dr. Wilde's World, scheduled to open very soon. In the near future, you will see construction on our new breathtaking aviary, as well as the development of the Tropical Americas section. It is

through our combined efforts that this is all happening and can become even greater.

I hope that we will all continue to work together as ambassadors for Metrozoo. I am sure that you are as proud and excited about what is happening here as we are. If you have any thoughts, resources or contacts that can assist in our development and enhancement, please call, fax or e-mail us. Thank you for your continued support.

Sincerely,



Daniel J. Licciardi
President
Zoological Society of Florida



BALL OF THE WILD OF THE WILD



Presented by Lucent Technologies

Saturday, March 3, 7:30 p.m. – Midnight

From the mystery of the origins of mankind to the majesty of the great annual wildlife migration, Africa is unparalleled in its ability to overwhelm you with its natural and cultural wonders. Ball of the Wild will immerse guests in those wonders as it comes to you "Out of Africa." It is sure to be the event of the year and an unforgettable safari of the soul.

Guests at this year's annual fundraiser will savor an assortment of dishes featuring authentic African cuisine catered by Lasso the Moon. Special entertainment, hosted by Metrozoo's Goodwill Ambassador, Ron Magill, will wow the guests.

This is the second year that Lucent Technologies is sponsoring this elegant evening of fun and enchantment under the stars at Metrozoo.

Place: Miami Metrozoo: Trellis Area for Cocktails
Dr. Wilde's World &
River Plaza for Dinner
and Dancing

Cost: "Wild Seating": \$500 per person
Reserved Seating: \$5,500 per table

Dress: Safari Chic (spots, stripes, animal prints) or Black Tie

For reservations, call the ZSF: (305) 255-5551 or visit our website at www.zsf.org.

Help Metrozoo grow.

Invitation Art: Jeannette Aquino

CELEBRATE EARTH DAY AT METROZOO!

SUNDAY, APRIL 22, 11 A.M. - 4 P.M.

Celebrate Planet Earth and all its wildlife wonders at Miami Metrozoo! Join our ZSF naturalist for a guided tour of the slash pinelands surrounding the Zoo. For entertainment in the shade, there will be three special presentations in the Children's Zoo Ecology Theater, where our usual live animal show will be given an environmental twist. Visit our Butterfly Garden with one of our Children's Zoo educators and learn what you can do to turn your own backyard into a butterfly haven! Enjoy music and other activities for all ages. Come to the Zoo where learning is fun!

Ecology Theater Shows: 11:00 a.m., 1:00 p.m., 3:00 p.m.

Pineland Tours: (Departing from Ecology Theater after show) 11:30 a.m., 1:30 p.m.

Butterfly Gardening Talk: 12:30 p.m.

Spring Blooms At the Zoo

Spring is a wonderful time to visit the Zoo and to see the many varieties of flowering trees and plants that enhance the animal exhibits. Throughout the months of March and April you will be able to see 182 different

species of flowering plants, trees and shrubs! You will especially want to look for some of the more unusual blooms of the: white Indian almond (in the background of the gorilla exhibit); yellow desert cassia (Komodo dragon exhibit); purple tabebuia (near the lake by the Toucan Trader gift shop); dark red sausage tree (monorail station 3); yellow Mexican caesalpinia (marabou exhibit); red African tulip tree



(black rhino exhibit); red odentia and red passionfruit (Butterfly Garden in the Children's Zoo); golden shower tree (Cape hunting dog exhibit); lavender jacaranda (Baird's tapir exhibit); cream St. Thomas orchid (Asian elephant exhibit); the pink rondetia (Andean condor exhibit); and silver trumpet tree, yellow tabebuia and several colors of bougainvillea (throughout the Zoo).

BOARD OF DIRECTORS EXECUTIVE COMMITTEE

President

Daniel J. Licciardi

Immediate Past President

Edward Soto

Secretary

Jason Israel

Treasurer

Jorge A. Gross

Vice Presidents

Larcenia Bullard

Jennifer Getz

Robert W. Hudson

Sherrill W. Hudson

David Konfino

Manuel J. Rodriguez

Ted Schwarz

Diana Udel

Aviary Ad Hoc Committee

William J. Gallwey, III

Sanford B. Miot

Advisory Committee

Andrew H. Weinstein

At Large

Jorge L. Arrizurieta

Sandy Batchelor

Sue M. Cobb

R. Kirk Landon

ZSF Executive Director

Glenn Ekey

Metrozoo Director

Eric Stephens

BOARD OF DIRECTORS

Rodney Barreto

George E. Batchelor

Colin A. Browning

Linda Coll

J. Courtney Cunningham

Cynthia Curry

Ron Esserman

Lester L. Goldstein

Thea Katzenstein

David L. Klein

Eduardo R. Lacasa

Vicki A. O'Meara

Marc A. Osheroff

Marshall R. Pasternack

Allan J. Pekar

Jay Pelham

William L. Rafferty, Jr.

Gonzalo Ruiz

Federico Sanchez

2000-2001 METROZOO OVERSIGHT BOARD

Alex Penelas, Miami-Dade County Mayor

Dennis Moss, Board of County Commissioners

Steven Spratt, Senior Executive Assistant to the County Manager

Vivian Donnell Rodriguez, Director, Miami-Dade County Park & Recreation Department

Daniel J. Licciardi, President, Zoological Society of Florida

Ed Soto, ZSF Immediate Past President

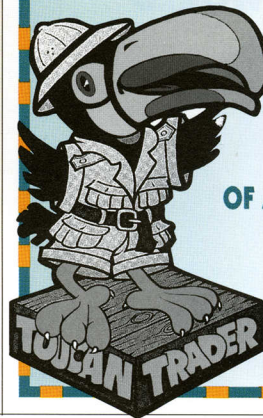
Sue M. Cobb, ZSF Board Representative

Eric Stephens, Metrozoo Director

Glenn Ekey, ZSF Executive Director

COUPON

**CHECK OUT OUR NEW LINE
OF HAND-DYED TEE-SHIRTS FROM
THE MOUNTAIN COMPANY.**



RECEIVE AN ADDITIONAL

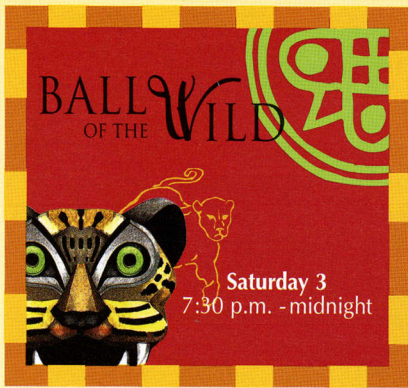
10% OFF

OF ANY TEE-SHIRT PURCHASE
WITH COUPON.

EXCLUDING CLEARANCE MERCHANDISE.

Valid through April 30, 2001

MARCH 2001



BALL OF THE WILD
OF THE WILD

Saturday 3
7:30 p.m. - midnight

Safari through the soul of Africa. Savor a variety of flavors while you journey on an expedition to delight the senses. Dance, feast and tune your heartbeat to the drums and excitement of this amazing continent.

Safari Chic or Black Tie
\$500.00 per person/\$5500.00 table of 10

APRIL 2001

THE GREAT METROZOO EGG SAFARI

Sunday 15
11:00 a.m. - 4:00 p.m.



For children ages 12 and under gather eggs filled with candy and other treats, face painting, magic, storytelling, photos with Mr. and Mrs. Bunny, entertainment and much more!

Celebrate Earth Day at Metrozoo

Sunday 22
11:00 a.m. - 4:00 p.m.



MAY 2001

Mother's Day at the Zoo

Sunday 13



Animal Mothers are fun to watch as they care for their babies!

TBA
Third Annual
BIG BUG OUT

JUNE 2001

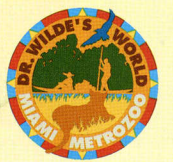
Father's Day at the Zoo

Sunday 17



Bring Dad to the zoo and see how animal dads interact with their families.

COMING 2001: Dr. Wilde's World



JULY 2001



SUMMER ZOO FARI CAMP

June 18 - August 17
(305)255-5551

COOL ZOO SUMMER
Misters & Water Play & Entertainment
June - August

AUGUST 2001



SEPTEMBER 2001

Back to School Fun Time at Metrozoo



OCTOBER 2001

MetroBoo!

Saturday 27-Sunday 28
10:00 a.m.-4:00 p.m.



NOVEMBER 2001

WILD LIGHTS AT MIAMI METROZOO

Wednesday, 11/20- Tuesday, 12/31

DECEMBER 2001



JANUARY 2002

Kids Fun Fest at the ZOO

Saturday 1/13 - Monday 1/15
11:00 a.m. - 4:00 p.m.



FEBRUARY 2002

JUNGLE JOG 5K RUN & FUN WALK

Organized by and benefiting Miami Metrozoo, the Rotary Club of Coral Gables and the Zoological Society of Florida.



For information on any of these events, please call the Zoological Society of Florida at (305)255-5551

TOUCAN TALK

CELEBRATING OUR 20TH ANNIVERSARY 1981-2001



Zoological Society of Florida
12400 SW 152nd Street
Miami, Florida 33177-1499

Nonprofit Organization
U.S. Postage
PAID
Permit No. 4358
Miami, Florida

WELCOME TO DR. WILDE'S WORLD

