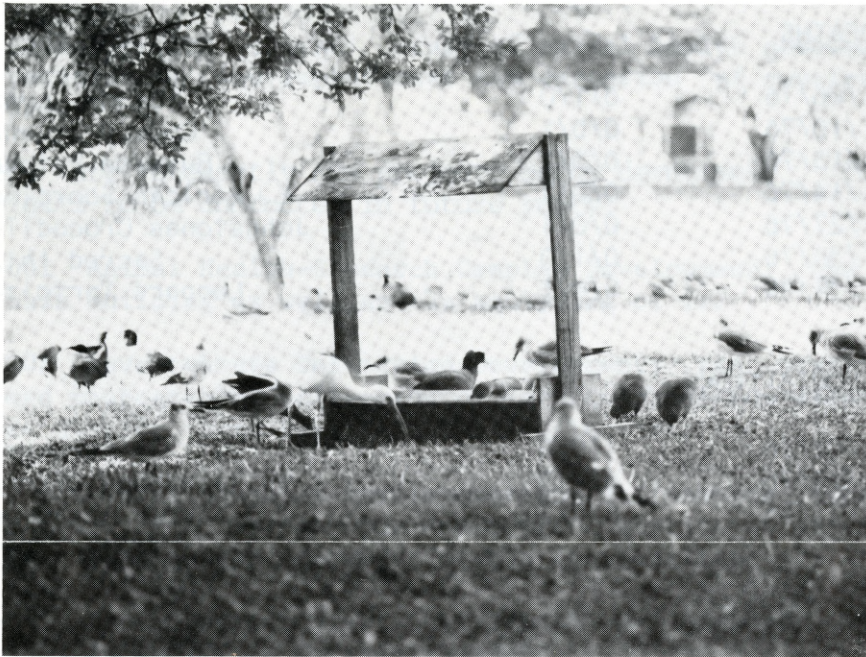


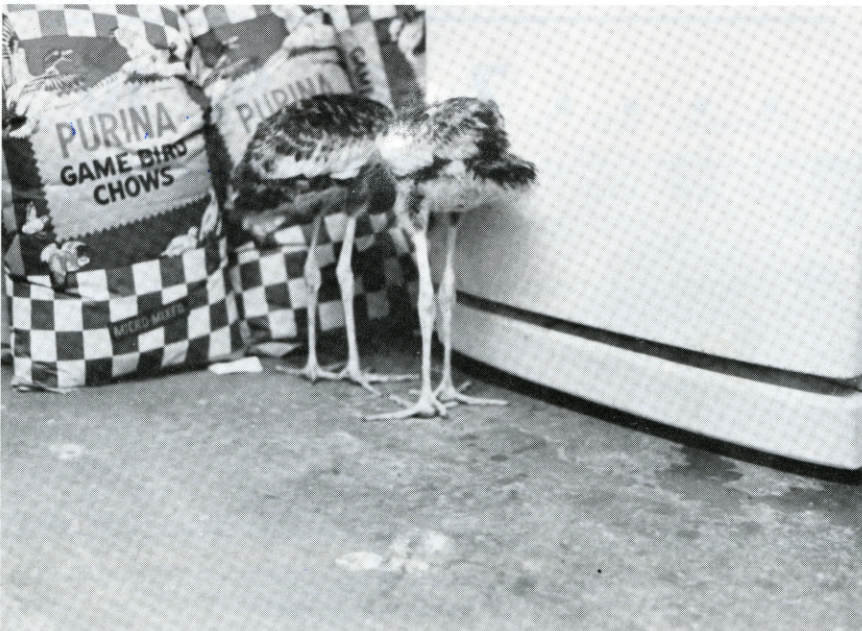
TIGER'S TALE

THE ZOOLOGICAL SOCIETY OF FLORIDA

Vol. 2 No. 5 February 1976



"Drop-ins" grab another meal at the feeder for our three trumpeter swans. This is an annual affair for these migratory birds. Meanwhile, back at the hatchery (below) two African crowned crane babes look unsuccessfully for Curator Pete Terry.



Research

Research at the Zoo is a new endeavor. Previous research consisted of sending biological materials to those researchers requesting it for their own studies. This kind of cooperation will continue in the future; however, the emphasis will be on a more active research role.

The research department has been planned as an integral component of the new Metropolitan Dade County (Miami) Zoological park, but its programs are currently being developed. There are four research programs under which research projects (individual scientific studies/inquiries) will be conducted.

(continued p. 3)

CALENDAR

Society meetings are held on the first Wednesday of the month at the Museum of Science Auditorium at 8 PM unless members are otherwise notified.

MARCH 3, 1976: DR. RICHARD WADE, MARINE ECOLOGIST WITH THE U. S. DEPT. OF THE INTERIOR, WILL SPEAK ON "ECOLOGY OF THE COASTAL ENVIRONMENT." DR. WADE'S SLIDES OF BISCAYNE BAY WILL GRAPHICALLY EXPRESS WHY THERE IS SUCH GROWING CONCERN FOR THE FUTURE OF THE BAY.

Vital Statistics



Bristol's

Kodak Supplies - Sporting Goods
 Complete Photographic Equipment
 PHONE 361-5501
 618 Crandon Blvd., Key Biscayne

Key Colony Motel

EFFICIENCY APARTMENTS
 PAR 33 GOLF COURSE
 OLYMPIC SIZE POOL

101 CRANDON BLVD.
 KEY BISCAIYNE, MIAMI
 361-5491

... 400 yards from the beach ...

BIRTHS

1/07/76	0/4/0	Sugar Glider
1/09/76	0/4/0	Sugar Glider
1/11/76	1/0/0	Domestic Goat
1/23/76	0/0/1	Red Kangaroo
1/24/76	0/0/1	Douroucouli (stillborn)
1/26/76	1/0/0	Maxwell's Duiker
1/29/76	0/0/2	Domestic Goat

DEATHS

1/06/76	0/1/0	Caracal Lynx
1/10/76	0/0/1	Common Iguana
1/13/76	0/0/1	Burmese Python
1/14/76	0/0/1	E. African Scorpion
1/27/76	0/0/1	Johnstones Crocodile
1/30/76	0/1/0	Sacred Ibis
1/31/76	0/0/1	Leopard Tortoise

ACQUISITIONS

1/08/76	1/0/0	Aardvark
1/23/76	0/1/0	White-handed Gibbon
1/27/76	0/0/1	Gopher Tortoise

OUT ON BREEDING LOAN

1/12/76	1/0/0	Green Tree Python
---------	-------	-------------------

1/1/1 First figure indicates number of males; second figure, females; third figure, sex unknown at present time.

- DEBRA BURCH

. . . . 7, 8, 9, 10

TOURS-SAFARIS-SHIKARS

Travel with people with similar interests
 Benefit your society

The friendly Travel Agency
 FOOR'S FOCUS TOURS

4444 

3064 grand avenue
 coconut grove, florida 33133
 phone 444-0434



- 1 Wildlife Data Program: inventory and baseline data on each specimen in the collection; accumulation of existing knowledge on each species in the collection; biological-ecological-ethological data accumulation/study; and research data publication, dissemination, and coordination.
- 2 Species Propagation-Conservation Program: propagation of endangered species in the collection; study and analysis of biological and management problems associated with long term captive breeding projects; and integration of captive and natural habitat fauna conservation management techniques.
- 3 Florida Fauna Program: captive and field study, propagation, and conservation of Florida's 268 rare-threatened-endangered species; and study the effects of exotic fauna species on indigenous Florida species.
- 4 Animal Health Program: study of animal health problems; improvement of veterinary techniques; and improvement and expansion of routine procedures performed at the Zoo.

There are presently six projects being developed. These will be the first of many projects to be conducted in future years.

RP-001 Animal Health-Research Complex Development: the planning and acquisition of this building as well as the equipping of it.

RP-002 Invertebrate Collection Development: the organization of a live, preserved, and photographic collection of invertebrates for display, education purposes, and as dietary items for the animal collection.

RP-003 Energy Resource Development and Utilization Study: the study of the use of methane gas through the anaerobic digestion of manure and solar energy as energy resources in the operation of the Zoo facility.

RP-004 Toxicological Substances Study: the determination and monitoring of toxic substances in the Zoo environment.

RP-005 Florida Cougar Conservation Management Study: a field study of this endangered species.

RP-006 Endangered Butterflies of Florida Study: a field study and survey of Florida butterflies and their status.

In order to conduct these and other research studies and inquiries, cooperation with the Florida scientific community will be emphasized. A Specialist Advisory Council will be established as an advisory board to the Research Curator.

I am particularly interested at this time to learn of those in the Zoological Society of Florida who would be sincerely interested in helping with the develop-

ment of the research effort. This would include helping with one of the following tasks:

- a) voluntary service to help put together bibliographies on topics supplied by the Research Curator from the books and publications in the Zoo library,
- b) voluntary service to compile historical information on the Zoo animal collection from the records on

hand, or
c) monetary assistance in publishing reports and accomplishing other research needs.

This is only an inquiry in order to determine who is interested in our research programs. A very limited number of copies of the report, *Research Annual Report 1975*, may be available in March for those sincerely interested in having more detailed information. If

(continued p. 4)

THE ZOOLOGICAL SOCIETY OF FLORIDA

OFFICERS

Mrs. Pat Bromberg, President
William G. Heuson, First Vice-President
C. Peter Buhler, Second Vice-President
Daniel Z. Averbook, Treasurer
Mrs. Em Kafoury, Secretary
Michael Kevorkian, Past President

BOARD OF GOVERNORS

Edmonson Couric, Jr. John W. Kearns
Floyd M. Foor Jack Knowles, DVM
Mrs. Pat Hester Les Kramer
Dr. Jules Kartman John Odgers
Jack Kassewitz, Jr. Dr. Dan Osman
Mrs. Roberta Tartaglino

Gordon L. Hubbell, DVM, Director, Crandon Park Zoo
Arthur H. Peavy, Jr., Director, Dade County Parks & Recreation
Steve Clark, Mayor, Metro-Dade County
Joyce Meade, Docent President

HONORARY

Captain John Halliburton John D. Slater
Ralph S. Scott George Wallace
Charles Zink

PHOTO CREDITS:

Em Kafoury

EDITOR:	Em Kafoury
PRODUCTION:	Debbie Burch Peg Lincoln
ART:	T.A. Strawser Candy Norton
BANNER:	T.A. Strawser

New Members Docent Desk

Jeffry Feinberg, Judith Frankengerger, Sally Pres-
tridge, Mr & Mrs Jack B. Quisenberry, Mr & Mrs Ray Schaltenbrand, T. Semon, Craig Swanson, and Mr & Mrs Joseph Thompson.



A combination of things is being used to explain the low totals for January. A series of cold weather periods, budget problems in our schools, and so on are the most common suggestions. There were 18 regular tours with 109 in attendance, 6 special tours with 251 in attendance, and 1 outside lecture reaching 35 persons. This is a not-so-grand total of 395.

Research (con't)

you have an interest in helping with the research effort, send a letter indicating your interest to: Vernon N. Kisling, Jr, Research Curator, Crandon Park Zoological Garden, 4000 Crandon Boulevard, Key Biscayne, FL 33149, call 361-2515, or stop by the Zoo Office.

- VERNON N. KISLING, JR.

HELP!

Wanted: Low pay, high status position on this very publication. Present and only employee very tired & looking toward retirement. Call 361-1266.

THE SCIENTIFIC APPROACH
TO THRIFT ...
A FIRST FEDERAL SAVINGS ACCOUNT



First Federal OF MIAMI

AMERICA'S OLDEST FEDERAL, LARGEST IN THE SOUTH
W. H. WALKER, JR., CHAIRMAN

The Zoological Society of Florida

4000 Crandon Boulevard
Key Biscayne, Florida 33149



PLEASE DO NOT REMOVE