

**The Dividing Line:** An early view of Rickenbacker Causeway shows that Colored motorists, and Colored only, must turn left to Virginia Key Beach (officially called Virginia Beach), while Whites proceeded across the Bear Cut Bridge in the distance to Crandon Park on Key Biscayne.





# 15143

MAY 28 1952





**Circa 1950's**



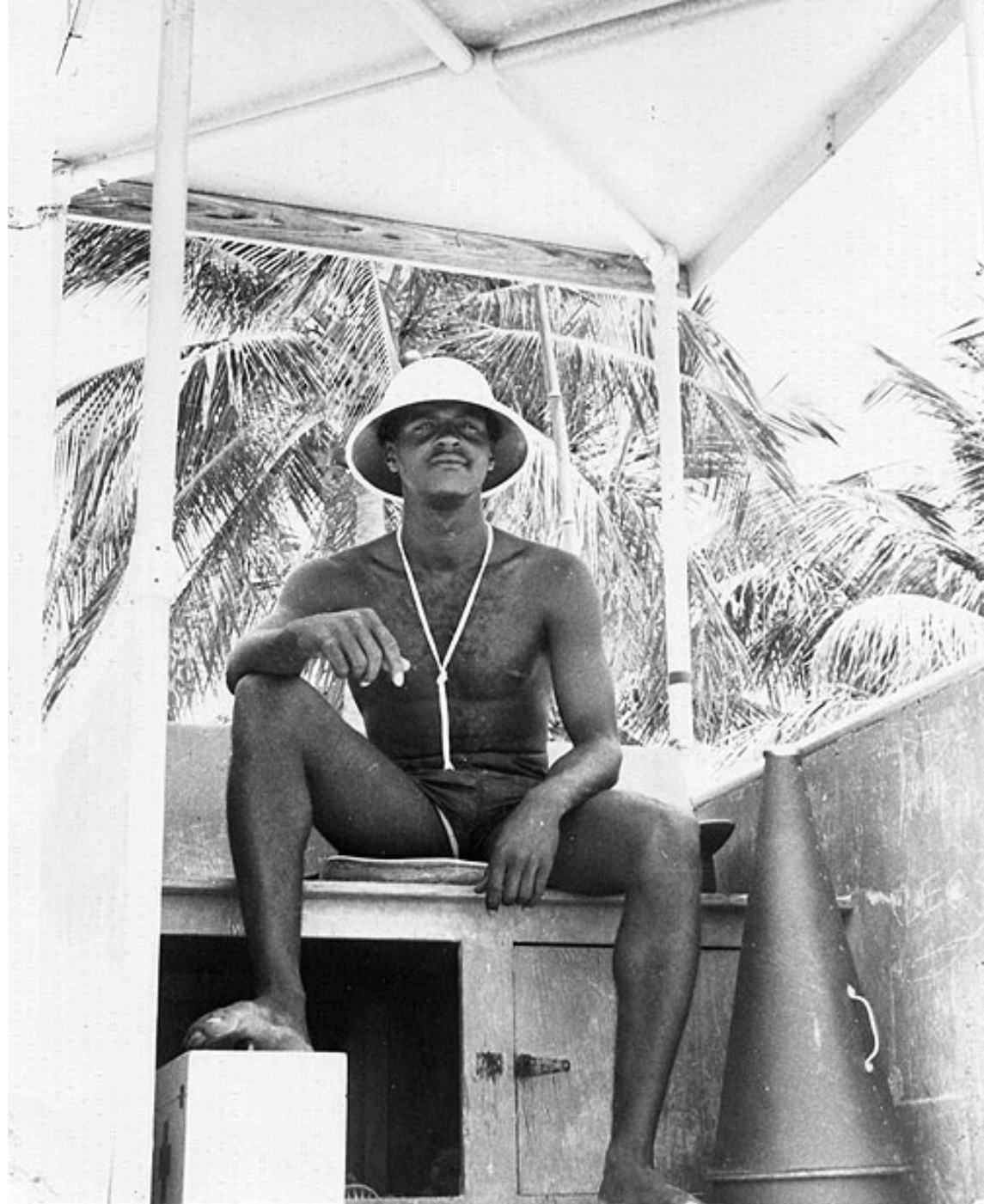










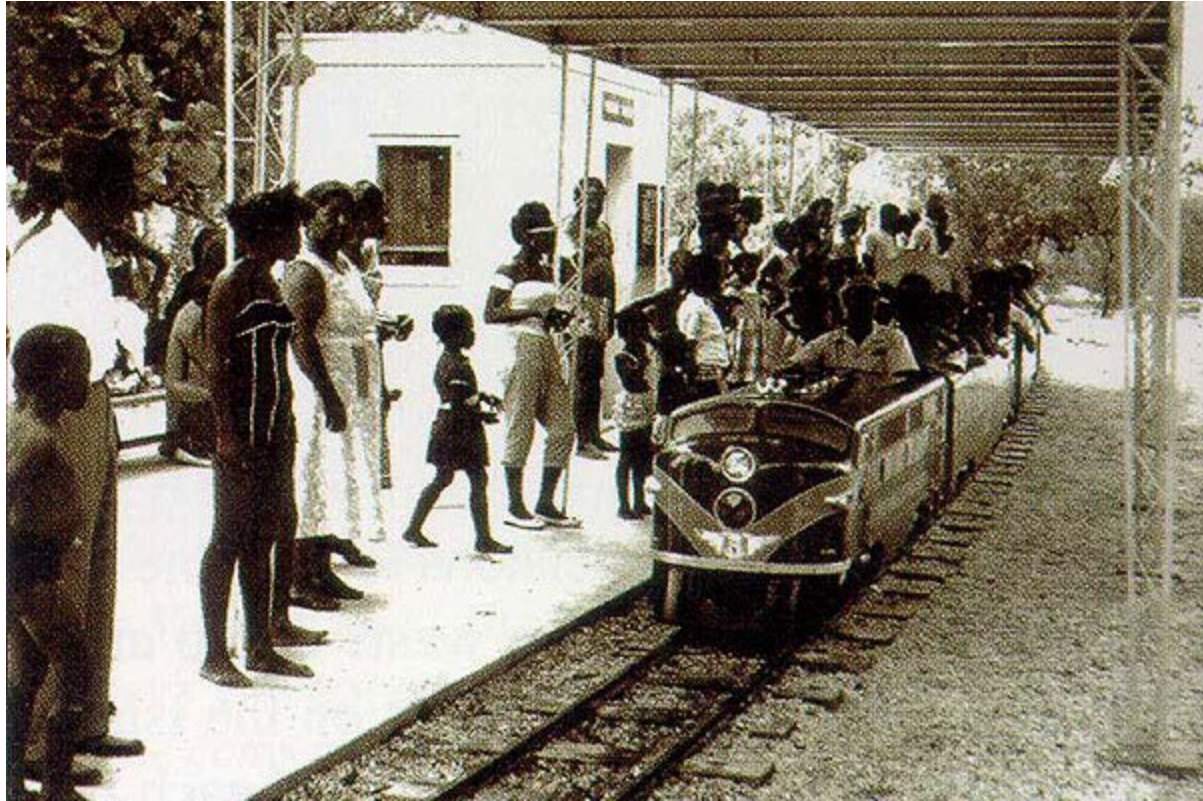






























Virginia Key  
Beach Park  
Pampering Sandcastle









09:49 AM 11/06/10



12:05 PM 11/06/11







02:15 PM 08/27/10

*Come and experience  
“Paradise Renewed”!*

**FLORIDA'S HISTORIC AFRICAN AMERICAN BEACHES**  
(A partial listing)

**American Beach, *Nassau County***

**Bethune Beach, *Volusia County***

**Bruce Beach, *Escambia County***

**Bunche Beach, *Lee County***

**Butler Beach, *St. John County***

**Rosamond Johnson Beach, *Escambia County***

**Jordan Beach, Spa Beach, *Pinellas County (St. Petersburg)***

**Juno Colored Beach, *Juno Beach (Palm Beach County)***

**Lincoln Beach, *Hillsborough County (West Tampa)***

**Manhattan Beach, Pablo Beach, *Duval County (Jacksonville)***

**Money Bayou Beach, *Port St. Joe (Gulf County)***

**Unnamed Colored Beaches (*Broward County*)**

**Unnamed Colored Beaches (*Miami-Dade County*)**

**Virginia Key Beach Park (*Miami-Dade County*)**