

EVENT ORGANIZERS

LARGE SPECIAL EVENTS RENTAL SPACE AT HVKBP

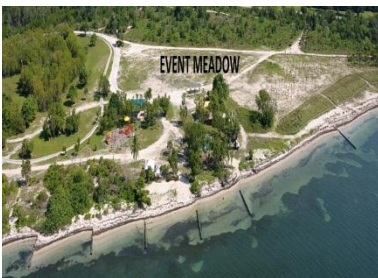
AS OF 4/30/14

LARGE SPECIAL EVENTS



1. ENTIRE PARK - \$20K

AMENITIES: 82 ACRES OF PROPERTY; (4) LARGE PAVILIONS; (1)- SMALL ISLAND PAVILION; (2)- 20X20 TENTS; (1)-20X30 TENT; CONCESSION STAND (ADDTL COST); (2) PLAYGROUNDS; WEDDING GAZEBO; TEA HOUSE (ADDTL COST); (2)- BATHROOM FACILITIES; CAROUSEL (ADDTL COST); MINI TRAIN (ADDTL COST); PICNIC TABLES; BENCHES; (3)-CABANAS (ADDTL COST); BIKE TRAIL; MINIMUM ELECTRICITY



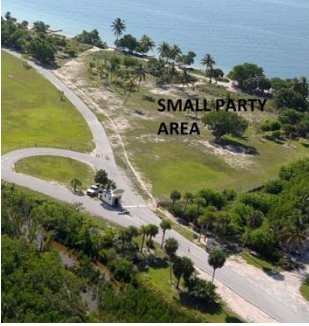
2. EVENT LAWN/MEADOW – \$10K

AMENITIES: 5 ACRES OF PROPERTY; (2) LARGE PAVILIONS; (1)- SMALL ISLAND PAVILION; (1)- 20X20 TENT; (1) PLAYGROUND; WEDDING GAZEBO; TEA HOUSE (ADDTL COST); (1)- BATHROOM FACILITY; MINI TRAIN (ADDTL COST); PICNIC TABLES; BENCHES; (3)-CABANAS (ADDTL COST); BIKE TRAIL; MINIMUM ELECTRICITY



3. FRONT LAWN – 10K

AMENITIES: 4 ACRES OF PROPERTY; (1)- BATHROOM FACILITY; BENCHES; NO ELECTRICITY



4. PARTY AREA-SMALL AREA NEXT TO FRONT LAWN - \$2.5K

AMENITIES: 1 ACRE OF PROPERTY; (1)- BATHROOM FACILITY; SHORELINE: AMPLE TREES; NO ELECTRICITY



5. HISTORIC CORE - (DANCE/MAIN /CONCESSION STAND/SURROUNDING AREA) - \$5K

AMENITIES: 1/2 AN ACRE OF PROPERTY; (2) LARGE PAVILIONS; (1)- 20X20 TENT; (1)- 20X30 TENT (ADDTL COST); CONCESSION STAND (ADDTL COST); (1) PLAYGROUND; (1)- BATHROOM FACILITY WITH SHOWERS; CAROUSEL (ADDTL COST); MINI TRAIN (ADDTL COST); PICNIC TABLES; BENCHES; MINIMUM ELECTRICITY



6. CONCESSION STAND ONLY - \$3K

AMENITIES: INCLUDES PAVED & SMALL GRASS AREA IN FRONT OF CONCESSION STAND; (1)- BATHROOM FACILITY; MINIMUM ELECTRICITY; 3600 SQUARE FOOTAGE OF BUILDING; 76 FT LONG BAR COUNTERTOP; (2)- PRIVATE RESTROOMS; (1)- PRIVATE OFFICE SPACE; USE OF REFRIDGERATOR & FREEZER; ICE MACHINE (ADDTL COST)



7. NORTH PARTY AREA –(ORANGE & GREEN PAVILION & SURROUNDING AREA) - \$5K

AMENITIES: 1/2 AN ACRE OF PROPERTY; (2) LARGE PAVILIONS; (1)- 20X20 TENTS; (1) PLAYGROUND; (1)-WEDDING GAZEBO; (1)- BATHROOM FACILITY; PICNIC TABLES; BENCHES; (3)-CABANAS (ADDTL COST); MINIMUM ELECTRICITY



8. SOUTH PARTY AREA – (20X30 TENT / SURROUNDING AREA) - \$3K

AMENITIES: 1/4 ACRE OF PROPERTY; (1)-20X30 TENT; CONCESSION STAND (ADDTL FEE); (1)- BATHROOM FACILITY; PICNIC TABLES; BENCHES; AMPLE TREES; SHORELINE; MINIMUM ELECTRICITY



9. PARTY AREA - BEHIND OFFICE - \$2K

AMENITIES: 1/4 ACRE OF PROPERTY; (1)- PLAYGROUND; (1)- BATHROOM FACILITY; CAROUSEL (ADDTL COST); MINI TRAIN (ADDTL COST); PICNIC TABLES; BENCHES; MINIMUM ELECTRICITY



10. PARTY AREA - INSIDE TRACKS - \$500

AMENITIES: 1/4 ACRE OF PROPERTY; (1)- BATHROOM FACILITY; NO ELECTRICITY

HISTORIC VIRGINIA KEY BEACH PARKING

VEHICLE PARKING AREAS WITHIN PARK

Paved Parking Lot –

- 436 regular spaces
- 12 handicapped spaces
- 2 baby stroller spaces
- 7 large bus/trailer spaces

Grass “Front Event Lawn” Area – approx. 500

Grass “Front Lawn Overflow” Area –approx. 200

Grass Area behind office - approx. 75 spaces

Overflow Parking (if Available) – “Rear Event Lawn” – approx. 500

VEHICLE PARKING AREAS OUTSIDE OF PARK

MIAMI MARINE STADIUM - APPROX 1200 SPACES - RENTAL: \$2500 PER DAY - CONTACT: OLGA ZAMORA (305) 416-1476

MIAMI SEAQUARIUM - APPROX 500 SPACES - RENTAL: VARIES - CONTACT: CHIP GAUDIO (305) 2511

AUTHUR LAMB ROAD IN VKB - APPROX 1500 SPACES - RENTAL: VARIES - CONTACT: PATRICE JACKSON (305)416-1361