

Lehman Center for Transportation Research

4/17/98

**1998-2000 CENTER/INSTITUTES AND ACADEMIC SUPPORT UNIT
PLANNING AND ACCOUNTABILITY REPORT**

Unit Name: Lehman Center For Transportation Research
Report Prepared by: L. David Shen
Date Submitted: 4-17-98

Unit Administrator: L. David Shen
Telephone Number: X-3055

If this a SUS recognized Institute or Center:

Indicate the SUS type : IV. (Edit out the three that do not apply)

Associated Disciplines: Civil Engineering, CIP: 14081

(List the 2-digit Classification of Instructional Programs (CIP) code(s) of the closely affiliated academic programs.)

PART I: MISSION, ORGANIZATION, TRENDS AND GOALS

A. MISSION

Enter complete mission statement here.

Provide a narrative statement following the mission noting any changes that were made since last year.

The Lehman Center for Transportation Research (LCTR) at Florida International University was established in 1993 in honor of Congressman Bill Lehman and his tireless efforts to make South Florida a better place for all of us. The Center's vision is to become a strong "state-of-the-art" transportation research and training facility. LCTR is committed to serve and benefit our society by conducting research to improve mobility and the quality of life, develop partnerships in the transportation industry, and educate a multi-disciplinary work force to plan, manage and implement transportation systems.

No changes since last year.

B. ORGANIZATIONAL ISSUES

Place current organizational chart here, or insert as separate page.

See attach chart in next page.

a. Describe changes in administrative structure in past year and proposed changes

None

b. Future recruitment for key administrative positions

None

C. EXTERNAL TRENDS

What external trends may influence your programs or operations over the next five years?

How do you intend on adjusting to these?

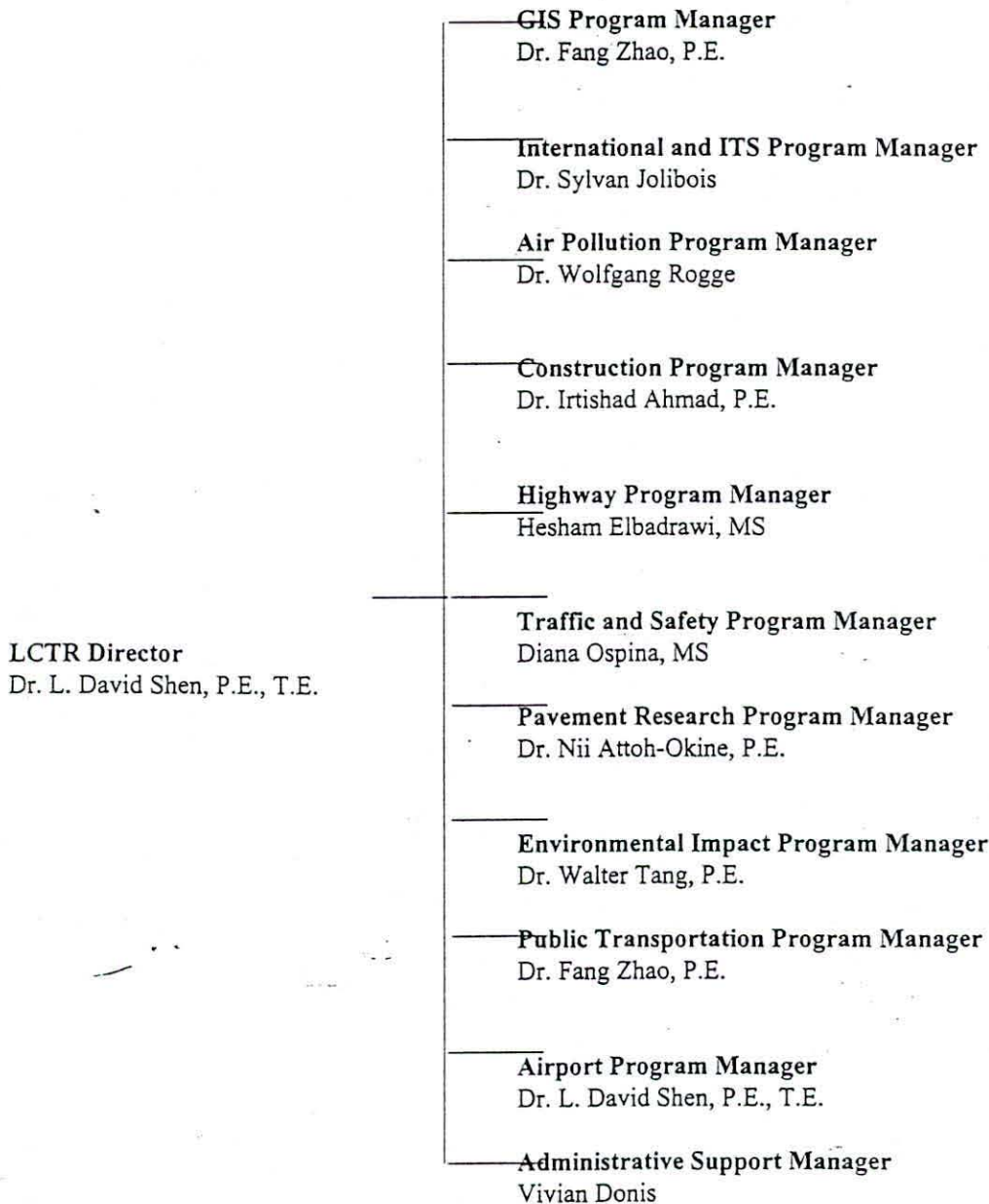
a) Shrinking federal research budgets

b) Increasing competition for research dollars

PLANNING GUIDELINES - CENTERS/ACADEMIC SUPPORT UNITS

ORGANIZATIONAL CHART

The chart below outlines the organizational structure of the Center by function.



The LCTR is located within the Department of Civil and Environmental Engineering in the College of Engineering. Presently, the Chairman of the Department of Civil and Environmental Engineering is also the LCTR Director. Otherwise, the LCTR Director would report to the department chair.

PLANNING GUIDELINES - CENTERS/ACADEMIC SUPPORT UNITS

- c) Further delay of Ph.D. program
- d) Inadequate support from the university in terms of the following:
 - 1) OCO money for computer equipment
 - 2) Tuition waiver, scholarship and graduate assistantship

We plan to work harder to get the funding from national, state and local agencies. In addition, the support of the University in returning a certain percentage of overhead dollars to the Department and LCTR is needed to make us competitive and build up our transportation research infrastructure.

D. STRATEGIC DIRECTIONS AND AREAS OF EMPHASIS

Provide a vision of your unit in five years from now. Include strategic directions and special areas of emphasis in which you expect to be known for excellence.

To become a "one-stop" major clearinghouse in the United States for intermodal guideway transit systems. The special areas of emphasis in which we expect to be known for excellence are as follows:

- a) Intelligent Transportation Systems
- b) Geographic Information Systems
- c) Public Transportation Systems
- d) Airport Planning & Design
- e) Traffic Engineering and Operations

E. LONG RANGE GOALS AND ANNUAL OPERATIONAL GOALS (Use "Sample Goal Format" on next page).

Under each of the University goals, list your long range goals in priority order, the first being of greatest importance. You should have 4 to 12 long range goals, **no more than 12**. State expected outcomes in 5 to 10 years and how success in attaining these can be measured. For those that were included in your plans last year, state the outcomes. (Each center and institute has a special mission so it may not address all of the six University goals.)

- a) to become a "one-stop" major clearinghouse in the country for intermodal guideway transit systems.
- b) to become a "one-stop" transportation research and training center for air transportation in Florida.
- c) to become a "one-stop" transportation research and training center for automated people movers in the world.

For each of the Long Range Goals noted above provide your objectives, the actions you intend on taking in 1-2 years. Provide an outcome and assessment of the goals/objectives specified last year and state your new objectives for two years into the future. Specify how these outcomes and assessments were used to improve your programs.

Long Range Goal 1:

Measurable Outcome: Progress is made.

Long Range Goal 2:

Measurable Outcome: Progress is made.

Long Range Goal 3:

Measurable Outcome: Progress is made.

PLANNING GUIDELINES - CENTERS/ACADEMIC SUPPORT UNITS

PART II: SPECIAL TOPICS AND GOALS

On the following pages are specific topics which are of importance for the management of our programs. Feel free to add qualitative statements and comments as needed to convey your intentions.

A. FUNDING - Contracts and Grants: The goal is to increase by 17% per year. Verify/modify the goals for 1998/99 to 2002. Use blank row if your unit is not listed. Table should only have your unit's data, remove the others.

Not applicable.

2. Private Sector Fund Raising Funding. Restricted Gifts, Cash and In-Kind Services by Calender Year (January 1 to December 31). Total Dollars. The 1998 goal was set last year, if you change it please note your justification. Please confer with Vice President Gallagher to develop refine your development plans and goals for 1998, 1999, and 2000. If your unit is not listed, then enter in blank row.

Not applicable.

3. **The goal is to reduce dependance on State E&G Funding.** From the Budget and Personnel Report that follows calculate the percent of your total budget that is derived from Education and General dollars.

Not applicable.

B. BUDGET AND PERSONNEL

Enter into the following "Budget and Personnel Report" your budget and personnel request. See Appendix I for instructions. The BOR checks these figures, so make sure they total and balance correctly. **Rate is defined in Appendix I.** If you have questions call Academic Affairs budget office.

If there are expenditures and position allocations from accounts outside of unit, please note these on a page following the table. Be sure to note actual in 1997/98 and requests for 98/99 and 99/2000.

Discuss your budget and position justifications and comments following the "Budget and Personnel Report."

Unit Name: Lehman Center for Transportation Research	Director: L. David Shen	Prepared by: L. David Shen	Florida International University
Type: (If Institute/Center note IV)	Associated Disciplines (CIPs): 14081	Phone: X-3055	Date: 4-17-98

BUDGET AND PERSONNEL REPORT

EXPENDITURES		Actual Expenditures 1997/98					Request 1998/99					Request 1999/2000				
		E&G	C&G	Fees for Service	Private & Other	TOTAL	E&G	C&G	Fees for Services	Private & Other	TOTAL	E&G	C&G	Fees for Services	Private & Other	TOTAL
Salaries & Benefits	FAC		150k			150k		300k			300k		300k			300k
	A&P/ USPS															
	Total		150k			150k		300k			300k		300k			300k
Other Personnel Services	Grad. Asst		120k			120k		120k			120k		120k			120k
	Other		40k			40k		70k			70k		70k			70k
Expenses			90k			90k		90k			90k		90k			90k
Operating Capital Outlay			10k			10k		20k			20k		20k			20k
Electronic Data Processing																
Special Categories																
Total Expenditures			410k			410k		600k			600k		600k			600k
ALLOCATION POSITIONS		Actual Allocations 1997/1998					Request 1998/99					Request 1998/99				
		E&G	C&G	Fees for Services	Private & Other	TOTAL	E&G	C&G	Fees for Services	Private & Other	TOTAL	E&G	C&G	Fees for Services	Private & Other	TOTAL
Faculty Positions (Personyears)			.25			.25		.25			.25		.25			.25
Other Positions (Personyears)			3			3		3			3		3			3
Total Positions (Personyears)			3.25			3.25		3.25			3.25		3.25			3.25
Sum of Rates for Faculty Positions			150k			150k		170k			170k		170k			170k

Page 521

Unit Name: Lehman Center for Transportation Research				Director: L. David Shen				Prepared by: L. David Shen				Florida International University			
Type: (If Institute/Center note IV)				Associated Disciplines (CIPs): 14081				Phone: X-3055				Date: 4-17-98			
Sum of Rates for <u>Other</u> Positions		160k		160k		180k		180k		180k		180k			
Sum of Rates for <u>All</u> Positions		310k		310k		350k		350k		350k		350k			

On a separate page note expenditures and position allocations from accounts outside of Institute/Center. Be sure to note actual in 1997/98 and requests for 98/99 and 99/2000. Budget justification and comments should accompany separate section. See Appendix I for instructions.

PLANNING GUIDELINES - CENTERS/ACADEMIC SUPPORT UNITS

C. PUBLICATIONS AND OTHER PRODUCTIONS

1. Number of publications and other media produced, or faculty productions which give credit or acknowledgment to the unit for its support.

Number of publications and other media produced, or faculty productions which give credit or acknowledgment to the unit for its support							
	94/95 Actual	95/96 Actual	96/97 Actual	97/98 Goal	97/98 Actual	98/99 Goal	99/00 Goal
	#	#	#	#	#	#	#
Books authored and published	5	2	3	3	4	3	3
Articles published in refereed journals	4	3	3	3	2	3	3
List categories most appropriate							
Conference papers	4	7	5	5	6	5	5
Presentation/seminars	4	5	4	4	4	4	4

D. FACULTY INTEGRATION/COLLABORATION/SUPPORT:

Indicate the forums provided by the unit for the presentation of faculty research and those which support faculty teaching, research and service interests. Indicate ways in which faculty are involved with the unit, such as advisory committees, forums, presentations, etc.

Not applicable.

E. ENROLLMENT PLANNING (If unit does not sponsor courses, write non-applicable and delete remainder of section).

Not applicable.

1. Off-Campus and Distance Learning Goals: Specify your long term goals and strategic directions for off-campus or distance learning programs. Please include any expected changes in the content, location or governance of existing programs.

Not applicable.

2. Number of formally registered certificate students and certificates awarded.

PLANNING GUIDELINES - CENTERS/ACADEMIC SUPPORT UNITS

Not applicable.

3. Continuing Education FTEs

Not applicable.

4. Continuing Education Units (CEUs) Generated - Noncredit Programs

Not applicable.

5. Development and delivery of distance learning programs (telecommunications)

Not applicable.

6. New courses for professionals - credit and non-credit

Not applicable.

7. Additional opportunities for non-traditional students

Not applicable.

F. GRADUATE STUDIES

1. Number of Graduate Students supported with funds from the unit. Funding from all sources are to be included in this count. The goal is to increase the number with .25 FTE assistantships or greater:

Number of Graduate Students supported with funds from the unit. Number with .25 FTE assistantships or greater																	
Fall 96/97 Actual			Fall 96/97 Actual			Fall 97/98 Goal			Fall 97/98 Actual			Fall 98/99 Goal			Fall 99/00 Goal		
Total	Assist	%	Total	Assist	%	Total	Assist	%	Total	Assist	%	Total	Assist	%	Total	Assist	%
7	7	50	7	7	50	7	7	50	7	7	50	7	7	50	7	7	50

Total = Number of Graduate Students employed

Assist = Number of Graduate Students employed for .25, or 10 hours per week or more

2. Number and percent of above graduate students who are Black:

PLANNING GUIDELINES - CENTERS/ACADEMIC SUPPORT UNITS

Number of Black Graduate Students and Percentage of Total											
Fall 95/96 Actual		Fall 96/97 Actual		Fall 97/98 Goal		Fall 97/98 Actual		Fall 98/99 Goal		Fall 99/00 Goal	
#	%	#	%	#	%	#	%	#	%	#	%
2	29	2	29	2	29	2	29	2	29	2	29

3. Total amount of graduate student support (OPS):

TOTAL AMOUNT OF GRADUATE STUDENT SUPPORT (OPS)					
Fall 95/96 Actual	Fall 96/97 Actual	Fall 97/98 Goal	Fall 97/98 Actual	Fall 98/99 Goal	Fall 99/00 Goal
\$	\$	\$	\$	\$	\$
56k	70k	75k	75k	80k	85k

G. INSTITUTIONAL EFFECTIVENESS AND POLICIES

1. Do you anticipate changes in your unit policies and procedures. Indicate in which policy manual they are recorded, e.g. Academic Affairs Policy and Procedures Manual, Undergraduate Policy Manual, Unit Policy Manual, etc.

None.

2. Note special planning initiatives undertaken this past year and those planned in the future. (e.g. strategic plan, marketing plan, distance learning, etc.) If completed, specify title and date of planning reports.

None.

3. Internal Audits

When was the last audit? What were the outcomes?

When is the next audit?

None.

(#4, 5 & 6 below apply to every unit and must be responded to. This is required for SACS Accreditation. Your response will be provided to the Susan Himburg, FIU Self-Study Director, for compliance with Criteria for Accreditation, Section III: Institutional Effectiveness)

4. Discuss the ways you assessed the quality of your programs in 1997-98. Please attach a printed copy of your "Quality Assurance Plan," that specifies the guidelines, procedures and assessment instruments used evaluate the effectiveness of your programs. Attach program evaluation reports, especially if they contain recommendations for program improvement that demonstrate your use of the results.

PLANNING GUIDELINES - CENTERS/ACADEMIC SUPPORT UNITS

None.

5. Discuss the ways in which these assessments were used to improve the quality of your programs.
(Specifically discuss 2 improvements resulting from program assessments. Be sure to make clear how these are related to program evaluations results)

None.

6. Detail the faculty/staff involvement in the planning/evaluation process. Who participated in or reviewed this planning and accountability report?

Not applicable.

H. CAMPUS ISSUES

1. Proposed program changes in campus locations

None.

2. Proposed faculty or staff relocations

None.

3. Space (Present and future sq. ft. each location annually to 2001)

3,000 square feet.

I. STRATEGIC THEMES

How does your unit contribute toward the implementation of the University's strategic themes. Refer to "FIU: Reaching for the Top" 1996, Second Edition, for explanation of these. If these were clearly identified in the unit's long range goals and objectives stated in the first part of this report, then note goal number below. Otherwise answer questions as requested.

1. International

- a. Summarize the most significant international activities currently being conducted.

- 1) The LCTR Director gave a presentation on APM in Singapore last Sept.
2) The LCTR Director gave two lectures at an UNDP Seminar in Kansas City last February.

- b. State goals for international program initiatives.

The LCTR Director is working with the Taiwan's Ministry of Transportation (MOC) officials on possible collaboration of research efforts.

To promote FIU and to recruit graduate and undergraduate students are the two most important goals for all international programs.

- c. How are your international programs evaluated? Specifically discuss 2 improvements resulting from program assessments.

PLANNING GUIDELINES - CENTERS/ACADEMIC SUPPORT UNITS

The activities are evaluated based on the possible benefits to FIU. Good progress is being made.

2. Urban

- a. Summarize the most significant programs that currently focus on the urban theme.

The purpose of the ongoing intermodal guideway transit research is to reduce urban congestion and to improve the accessibility and mobility of urban residents.

- b. State goals for urban program initiatives.

To wrap up the intermodal research by the end of this year.

3. Environmental

- a. Summarize the most significant programs that currently focus on the environmental theme.

Not applicable.

- b. State goals for environmental program initiatives.

Not applicable.

4. Health

- a. Summarize the most significant programs that currently focus on the health theme.

Not applicable.

- b. State goals for health initiatives.

5. Information

- a. Summarize the most significant programs that currently focus on the information theme.

Not applicable.

- b. State goals for information theme initiatives.

Not applicable.

J. UNIVERSITY AND PUBLIC SERVICE: List contributions of expertise and technical skills to address the needs of the University, professional organizations, community or greater society.

The LCTR is working very closely with various State and Dade County transportation agencies to improve the quality of transportation facilities and services.

K. PUBLIC RECOGNITION:

List positive public attention drawn to the University by the activities of the unit through newspapers, television and

PLANNING GUIDELINES - CENTERS/ACADEMIC SUPPORT UNITS

other forms of public media.

Several news articles on the LCTR faculty's work have been published in the Miami Herald and other newspapers. Good public recognition has also been drawn by the colorful LCTR World Wide Web Homepage <http://www.eng.fiu.edu/LCTR>.

L. ADDITIONAL CRITICAL ISSUES WHICH NEED TO BE ADDRESSED (Or comments on future activities which have not been addressed above.)

None.

H:\LCTR\LCTR984-rep.doc

