

The GREEK EXPERIENCE



Florida International University

1997

THE
TRADITION
OF
A
LIFETIME
BEGINS
AT
FIU

Table of Contents

Part 1 Sororities

Alpha Xi Delta.....	2
Alpha Kappa Alpha.....	3
Delta Phi Epsilon.....	4
Delta Sigma Theta.....	5
Phi Mu.....	6
Phi Sigma Sigma.....	7
Sigma Sigma Sigma.....	8
Zeta Phi Beta.....	9

Fraternities

Alpha Phi Alpha.....	10
Delta Chi.....	11
Kappa Sigma.....	12
Omega Psi Phi.....	13
Phi Beta Sigma.....	14
Phi Delta Theta.....	15
Phi Sigma Kappa.....	16
Pi Kappa Alpha.....	17
Sigma Alpha Mu.....	18
Sigma Phi Epsilon.....	19
Tau Epsilon Phi.....	20
Tau Kappa Epsilon.....	21
Photo Page.....	22

Part 2 Greek Life

What Can Greek Life Offer?.....	23
The Power of 2%.....	23-24
It's All Greek to Me.....	24
Interfraternity Council.....	25
National Pan-Hellenic Council.....	25-26
Panhellenic Council.....	27-29
Financial Information.....	30

Editors

Lourdes Abascal • Oscar Carreras • Billy Jones

Greek Advisor

Betty Gonzalez



Phi Mu



Nickname: Phi Mu
Founded: Nationally: January 4, 1852
 Locally: August 27, 1988
Colors: Rose and White
Flower: Enchantress Rose Carnation
Symbol: Quadrafoil
Mascot: Lion
Jewel: None
Philanthropy: Children's Miracle Network/Project HOPE
Motto: "Les Soeurs Fideles" - "The Faithful Sister"
Famous Alumni: Jacklyn Smith, Linda Carter, Pat Mitchell,
 Dr. Mary Allen Weber, Liz and Kate Segal

Excellence...A tradition 145 years strong.

Three young women of gracious dignity, outstanding personality, and noble idealism, founded Phi Mu 145 years ago at Wesleyan College, Macon, Georgia. These Phi Mu women set a standard of excellence in social, intellectual, and moral improvement which today's members emulate. Phi Mu sisters continue to attain such precedents in all 132 collegiate chapters, 170 alumnae organizations, and with over 200,000 members in the nation and abroad, including the Theta Gamma chapter at Florida International University.

Phi Mu sisters of Theta Gamma have excelled in campus activities such as being members and officers of Golden Key National Honor Society, Omicron Delta Kappa leadership honor society, Phi Kappa Phi, Honors College, and Kappa Delta Pi. We are proud of our Peer Advisors, Resident Assistants, Student Ambassadors, and participants in the 1996-1997 Homecoming Court.

Besides enjoying an active social calendar filled with parties and mixers with the fraternities, Phi Mu sisters provide service to our nearby philanthropy, Children's Miracle Network. We have been recognized both locally and nationally for our commitment to our philanthropic organization, having raised over \$100,000. Additionally, our sisters have been recognized at the local and national level for their exemplary scholastic, philanthropic, and community achievements.

Phi Mu, the nation's second oldest fraternal organization for women, continues to lead in excellence, success, and sisterhood at Florida International University and world-wide.

Phi Mu...A lifetime of faithful sisterhood.



Phi Sigma Sigma



Nickname: Phi Sig
Founded: Nationally: November 26, 1913
 Locally: April 7, 1984
Colors: King Blue and Gold
Flower: American Beauty Rose
Symbol: Sphinx
Mascot: Penguin
Jewel: Sapphire
Philanthropy: National Kidney Foundation
Motto: Diokete Hupsula - "Aim High"



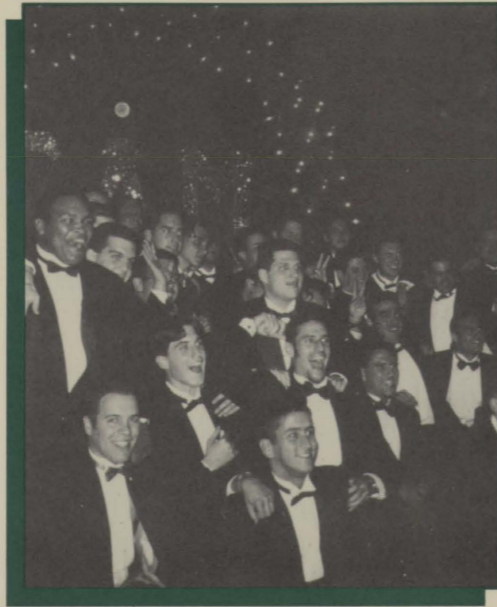
For over 80 years, the traditional ideals of sisterhood, scholarship, and service have been the basic foundations of Phi Sigma Sigma, which we, the Delta Kappa Chapter, proudly cherish. Founded in 1913 at Hunter College, New York, Phi Sig was established by ten women who strongly believed in a sorority which did not discriminate against women because of their race, color, or creed.

As the first national sorority at Florida International University, Phi Sig has strongly proven to "Aim High" in university activities such as holding leadership positions in organizations such as Peer Advisors, Student Government, FIU Golden Dazzlers, cheerleading, Mortar Board Honor Society, Omicron Delta Kappa leadership honor society, Order of Omega "Greek leadership honor society", Alpha Kappa Psi, Homecoming Queen, and Homecoming Princess.

Philanthropic activities have included the National Kidney Foundation, Diabetes Research Institute, Bowling for Kids Sake, United Way, Toys for Tots, and many more. This past year, our chapter raised the most money nationally at our sixth annual Rock-a-thon, benefiting the National Kidney Foundation. The Phi Sigs at Florida International University have received numerous national and divisional awards, one of our proudest being the National Outstanding Chapter Award. Phi Sigma Sigma are the reigning champions of Greek Week, as well as Homecoming Week Champions. We currently hold the title Homecoming Princess, Pi Kappa Alpha Dream Girl, Senior of the Year, President of the Year, and Peer Advisor of the Year. This year we also received recognition for our outstanding programming, sports, philanthropy, and overall achievement. Besides our accomplishment, what truly makes us unique are the special sisterhood, bonds, and friendships which we treasure in our hearts.



Sigma Alpha Mu



Nickname: Sammy

Founded: Nationally: November 26, 1909
Locally: January 20, 1991

Colors: Nationally: Purple and White
Locally: Purple and Gold

Flower: Purple Aster

Symbol: Octagon

Mascot: Yosemite Sam

Jewel: The Enamel Plate

Philanthropy: Pediatric AIDS Foundation

Motto: "Secret"

Famous Alimni: Steve Wynn, Les Wexner, Terry Semel, David Stern, Leonard Goldenson, Marv Albert, Zollie Volchok, Harry Glickman, Gordon Stullberg, Maxwell Rabb, Milton Shapp, U.S. Senators Hecht and Zorinsky, Dan Glickman

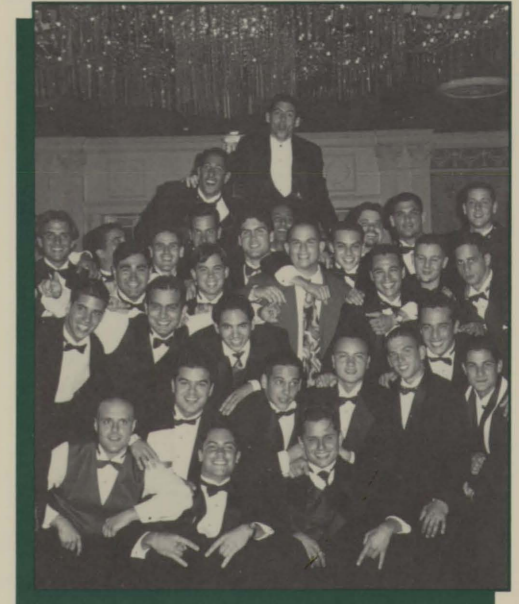
In 1909, eight young men came together at City College, New York under the pretense of uplifting school spirit, however, what developed that night changed the lives of over a million men for years to come. The eight men noticed they had a common bond in their ideals and belief of true manhood, democracy, and humanity. These men created Sigma Alpha Mu Fraternity in the spirit of those ideals that they believed to be so essential in college men. Today, Sigma Alpha Mu is a large international fraternity.

The Delta Zeta chapter of Sigma Alpha Mu at Florida International University strives for these ideals through community and campus involvement. Our philanthropic events involve holding an annual talent show for the United Way as well as organizing several other fundraising activities to benefit the Pediatric AIDS Foundation. We believe that although a fraternity provides a social setting for college men to come together, there are other important aspects of a fraternity in the form of scholarship, athletics, and most importantly, brotherhood.

Sigma Alpha Mu Fraternity has two key features that it always strives for. We believe that diversity of men and diversity of brotherhood are the most important aspects of a fraternity and our brotherhood provides proof of these features. Sigma Alpha Mu is not just a four year fraternity, it's a lifetime of brotherhood!

ΣΑΜ

Sigma Phi Epsilon



Nickname: Sig Ep

Founded: Nationally: November 1, 1901
Locally: January 17, 1987

Colors: Nationally: Red and Purple
Locally: Red and Blue

Flower: Roses and Violets

Symbol: The Balanced Man

Mascot: The Knight

Jewel: Pearls and Rubies

Philanthropy: Nationally: American Heart Association
Locally: Muscular Dystrophy

Motto: "Secret"

Famous Alumni: Carol O'Connor, Dr. Seuss, Orel Hersheiser, John Goodman, Dave Thomas, Andy Senior

Sigma Phi Epsilon was among the first nationally chartered fraternities at Florida International University, and is currently the largest on both campuses. Our chapter, Florida Nu, is part of the Sigma Phi Epsilon National Fraternity. With over 270 chapters and 20,000 undergraduate members which make up Sigma Phi Epsilon, it is one of the largest fraternities in the country.

In our ten year history at Florida International University, Sigma Phi Epsilon has become one of the most involved organizations in the university. Sig Eps are continually involved as Peer Advisors, University Ambassadors, Student Government, Interfraternity Council, Greek Advisory Board, and Sig Ep intramural participation is one of the most complete available. Every season, we field teams for football, softball, basketball, volleyball, soccer, and many more. In addition to fielding all these teams, we were undefeated in football, softball, and volleyball.

Academic achievement is another main objective of every Sigma Phi Epsilon brother. Our academic programs involve weekly study halls, personal tutors, and Professor reviews. The Sigma Phi Epsilon Educational Foundation, part of our national organization, offers a Balanced Man Scholarship to graduating high school seniors who excel in leadership, academics, and athletics. The Balanced Man Program, our new member development program, has gained national recognition among all fraternity development programs.

Sigma Phi Epsilon is a commitment to a lifetime responsibility of Virtue, Diligence, and Brotherly Love. Being a Sig Ep does not end when you graduate. We consider it a lifetime responsibility.

ΣΦΕ

Tau Epsilon Phi



Nickname: TEP
Founded: Nationally: November 10, 1910
 Locally: April 7, 1987
Colors: Lavender (purple) and White
Flower: Violets and Lily of the Valley
Symbol: None
Mascot: Tepmanian Devil
Jewel: Pearls and Emeralds
Philanthropy: Leukemia Society
Motto: "Committed To Achieving the Unattainable"
Famous Alumni: Dwight D. Eisenhower, Judge Joseph Wapner, Arnold "Red" Auerbach

The Tau Epsilon Phi creed emphasises the ideals of friendships, chivalry, and service. We strive each day to live up to these ideals set forth by our founders. Within the community, we have participated in Celebrity Baggers. This was to raise money for the Cancer Society. We have also participated actively in Habitat for Humanity, building houses for the homeless and underprivileged.

TEP was founded on the principles of complete nondiscrimination. We believe all men are created equal. Tau Epsilon Phi stresses the importance of being a leader on campus as well as in the fraternity. We also believe that hard work has to be paired with recreation. The sanctity of brotherhood is our greatest asset!

We have made the move to South Campus and are the only fraternity to actively rush both campuses. This gives us an opportunity for diversification. This move has enabled TEP to be more active within the Greek community. We participated in many different activities sponsored by fraternities and sororities. As well as having mixers with different sororities. We look forward to answering any questions that you might have. Brotherhood---an unbreakable bond for life!!!

TEΦ

Tau Kappa Epsilon



Nickname: Teke
Founded: Nationally: January 10, 1899
Colors: Crimson Lake and Pure Silver
Flower: Red Carnation
Symbol: Apollo
Mascot: The Knight of Classic Lure
Jewel: The Pearl
Philanthropy: Special Olympics
Motto: "Not For Wealth, Rank Or Honor; But, For Personal Worth and Character"
Famous Alumni: Ronald Reagan



Tau Kappa Epsilon is the largest International Fraternity in the world, with over 400 chapters and colonies in the United States and Canada. Since its founding in 1899, TKE has had a reputation of excellence.

The Sigma Alpha chapter of Tau Kappa Epsilon has been one of the top fraternities since its founding in 1985 at Florida International University. TKE has excelled in every part of fraternal life, from philanthropy to social, and from academics to athletics. Tekes also enjoy a social calendar filled with mixers, parties, and alumni events. TKE has won Greek Week from 1991-1993, placed first among fraternities in Homecoming 1995, and won its first ever IFC Football and Soccer Championships in 1995. Truly, TKE has set a new standard at FIU.

In the summer of 1995, the International Conclave of TKE was held in Washington, D.C., with delegates from each chapter in attendance. A momentous decision was made to establish a new membership development program that builds character and leadership in each of our gentlemen. This program is Tau Kappa Epsilon's Apollo Project.

In TKE, we pride ourselves on the closeness and strength of our brotherhood. Our achievements and the brotherhood are reflective of our desire for quality members who will contribute to the ongoing success of our fraternity. If you want to become a part of a great fraternity with a great tradition, then Tau Kappa Epsilon is for you.

TKE, a choice to belong, a challenge to become!

TKE

Fraternity men represent a very small percentage, only 2% of the male population in the United States. However, the 2% is a very powerful group of individuals! Fraternity men have gone on to hold many of the top positions in our nation, from the business world to the political agenda.

- Approximately 80% of the top executive of Fortune 500 companies are fraternity men.
- The majority (71%) of those listed in Who's Who in America are fraternity men.
- 40% of the 47 Supreme Court Justices since 1910 have been fraternity men.
- 100 of the 158 cabinet members since 1900 have been fraternity men.
- All but two United States Presidents since 1825 have been fraternity men.

It is certainly no surprise that today's college and university students express a keen interest in the Greek system. The opportunities are endless and the benefits speak for themselves. Each year thousands of young men enter the working world with the advantage of fraternity experience and alumni contacts.

It's All Greek to Me...

Active - Women and men who have completed their new member period and have been initiated into life-time membership in their group.

Alumna - A woman who has completed a period of active membership in a sorority chapter.

Alumnus - A man who has completed a period of active membership in a fraternity chapter.

Associate Member/New Member/Pledge - One who has accepted a bid from a sorority or fraternity and has taken the first steps toward full membership, but has not yet been initiated.

Bid - A formal invitation extended to a rushee to pledge a sorority or fraternity.

Chapter - The local group of the national organization.

Fraternity - The name that applies to all Greek letter organizations, characterized by a ritual, pin, and a strong tie of friendship. Informally women's fraternities are commonly called sororities.

Formal Rush - A series of parties given by each sorority and fraternity during a specified period which is scheduled and governed by Panhellenic and Interfraternity Councils.

Greek - A member of a sorority or fraternity, so-called because organizations bear Greek-letter names.

Initiation - The formal ceremony which brings a new member into full membership in a fraternity or sorority.

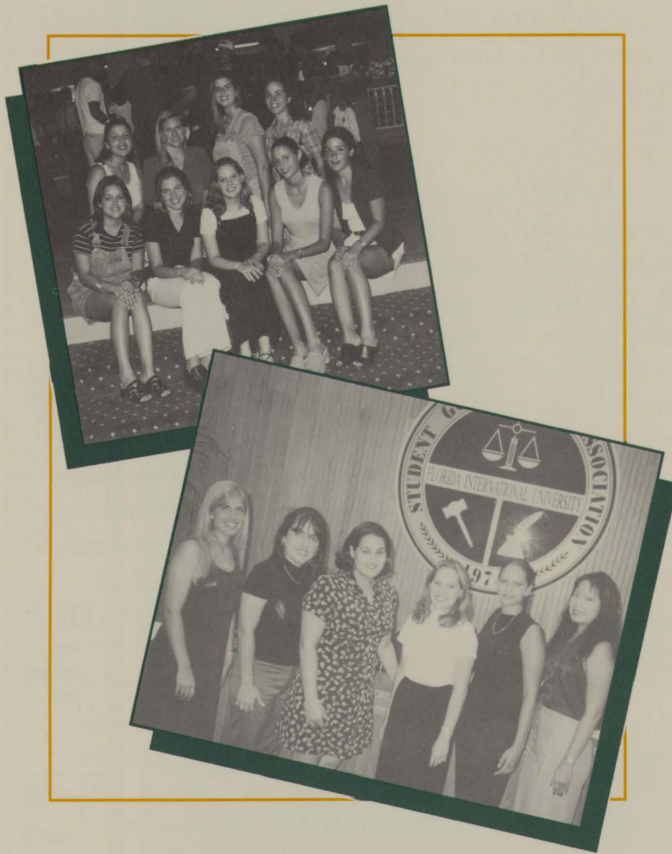
Legacy - A prospective member whose father, mother, brother, or sister is an alumnus/alumna or active member of a particular Greek organization.

Philanthropy - A service project undertaken by sorority or fraternity chapters on campus, in the community, or on a national level.

Ritual - The traditional secret ceremonies of a fraternity or sorority.

Rush - Method by which sororities and fraternities supplement their membership.

Rushee - A guest of sororities and fraternities who is regularly enrolled as a student, and who is interested in becoming a member of a sorority or a fraternity.



Interfraternity Council

The Interfraternity Council (IFC) is made up of voting delegates from each of the fraternities at Florida International University. It serves as the governing body for fraternities and oversees fraternity life at the University. The IFC provides guidance and assistance to fraternities through various programs aimed at developing academics, athletics, leadership, service, and social interaction. This central organization for the fraternity system also provides regulations for the fraternities in order to maintain harmony and balance among the member organizations in reference to rush and social activities.

Created only seven years ago, IFC is still a maturing organization. The nine national fraternities on campus include Delta Chi, Kappa Sigma, Phi Delta Theta, Phi Sigma Kappa, Pi Kappa Alpha, Sigma Alpha Mu, Sigma Phi Epsilon, Tau Epsilon Phi, and Tau Kappa Epsilon. As a group, IFC is moving towards concepts of rushing, new ways of interacting among themselves, and encouraging methods of uniting and becoming a family.

Rho Alpha

A Rho Alpha Counselor is a person who is chosen to work with the IFC during Rush, to help guide the rushees and to serve as a liaison between the rushees and the fraternity system. A Rho Alpha Counselor is someone who is knowledgeable of the Greek system at FIU, and who will be able to take you through each step of the Rush process. He knows about each part of Rush, pledging, initiation, and all of the Greek activities. During the two weeks of Rush, your Rho Alpha Counselor will be available to offer you advice and helpful information on how to choose the right fraternity best suited for your needs.

National Pan-Hellenic Council

The Executive Board

Dear FIU Family:

It gives us great pleasure to present to you the *National Pan-Hellenic Council (NPHC)* for the 1997-1998 year! The NPHC is currently composed of nine (9) National Greek letter fraternities and sororities: Alpha Kappa Alpha Sorority, Alpha Phi Alpha Fraternity, Delta Sigma Theta Sorority, Zeta Phi Beta Sorority, Iota Phi Theta Fraternity, Kappa Alpha Psi Fraternity, Sigma Gamma Rho Sorority, Phi Beta Sigma Fraternity, and Omega Psi Phi Fraternity. Six of the nine members are currently registered at FIU, or are in the process of chartering.

"Unanimity of thought and action" was the main stated purpose of the NPHC that was organized May 1930 on the campus of Howard University in Washington, D.C. Today, the NPHC is headquartered in Indianapolis, Indiana and the function of the organization is to promote interaction, encourage cooperation and provide support for each member fraternity and sorority in the furtherance of their national programs. Through national and regional conferences, meetings, and an NPHC newsletter, members exchange information and address issues of mutual concern.

The bond that unites each organization is its dedication to serve as conduits by which action plans could be formulated and coordinated to address the problems of today. Its continual legacy of promoting unity and social action has moved the

African-American community forward and has forever changed the American Society as a whole. Here at FIU, we welcome all men and women who are interested in learning more about the NPHC and its nine organizations. Whether it be service, academic aid, or networking, NPHC has it, and so much more...

Best wishes to a prosperous academic year!

Intake Process

Since each organization of the NPHC has different criteria for admission, intake processes are continually scheduled to be announced. Students who are interested in joining any of the organizations are encouraged to attend events, i.e. announced NPHC events, Greek Expo Night, the Minority Student Services Odyssey Orientation, the Welcome Back Extravaganza, and Freshmen Picnic, to name a few. Information will be on hand for all inquiries.

Financial Information

Financial information differs for each organization of the NPHC. Currently, there are three organizations who are awaiting their charters for FIU chapters. Financial information is often revealed at various individual organization intake meetings. Some financial costs are initial one time fees, again, differing amongst each organization.

Eligibility To Rush

Each organization has set standards and criteria in order to join. In most cases, students must have a cumulative grade point average of a 2.5, and must be at least of second semester, freshmen status. In some organizations, students must be of sophomore standing. Students must also be enrolled at Florida International University.

In NPHC, we pride ourselves with the many accomplishments of service we have brought to our community. On May 23, 1997, NPHC hosted its annual High School Daze Workshop. The purpose of the program is to encourage high school students to continue their education to the college level. This year, NPHC received great response, and over 70 student attendees of the Dade County Public Schools.

In addition, NPHC continually hosts various workshops, and other events to conquer many of the problems of today's society. As evident, the NPHC holds strongly to its historic ideals.

Prominent NPHC Members

Rev. Willie T. Barrow, minister, civil-rights activist; Tom Bradley, former Mayor of Los Angeles, CA; Cheryl Broussard, author; Hon. Corrine Brown, U.S. Congresswoman; Tony Brown, journalist/producer; Donald Byrd, trumpeter; Dr. Johnetta Cole, President Spellman College; Hon. John Conyers, U.S. Congressman; Bill Cosby, comedian/actor/producer; Camille Cosby, philanthropist; Comer Cotrell, entrepreneur; Hon. Ronald Dellums, U.S. Congressman; Ronald Dickerson, NCAA Coach; Janet DuBois, actress/singer; Althea Gibson, Wimbledon tennis champion; Dick Gregory, activist/comedian; Bernard A. Harris, Jr., astronaut; Lionel Hampton, xylophonist; Dr. Dorothy I. Height, President, National Council of Negro Women; Rev. Benjamin Hooks, former NAACP Executive Director; Anna Maria Horsford, actress; Rev. Jesse Jackson, civil rights activist; Dr. Mae Jemison, astronaut, entrepreneur; John H. Johnson, publisher; Michael Jordan, athlete, entrepreneur; Brenda Joysmith, artist/painter; Hon. John Lewis, U.S. Congressman; Toni Morrison, Nobel Prize winner, author; Hon. Carol Moseley-Braun, U.S. Senator; Rosa Parks, civil rights activist; Phylicia Rashad, actress/singer; Jerry Rice, athlete, San Francisco 49ers; Esther Rolle, actress; Emmit Smith, athlete, Dallas Cowboys; Jackie Torrence, Black Storyteller; Walter Turnbull, Harlem Boys Choir; Blair Underwood, actor/producer; Dionne Warwick, singer; Nancy Wilson, singer; Dr. Deborah Wolfe, former Educational Chief of House of Representatives.

Panhellenic Council

The Creed

We, the Undergraduate Members of women's fraternities, stand for good scholarship, for guarding of good health, for maintenance of fine standards, and for serving, to the best of our ability, our college community. Cooperation for further fraternity life, in harmony with its best possibilities, is the ideal that shall guide our fraternity activities.

We, the Fraternity Women of America, stand for service through the development of character inspired by the close contact and deep friendship of individual fraternity and Panhellenic life. The opportunity for wide and wise human service, through mutual respect and helpfulness, is the tenet by which we strive to live.

The Executive Board

Dear New Student:

As the President of the Panhellenic Council at Florida International University, I would like to take this opportunity to welcome you to our panther family. The Panhellenic Council is the governing body for all National Sororities. The Council strives to develop qualities of friendship, academic excellence, and community service within the sororities at FIU. Currently there are five national sororities at Florida International University: Alpha Xi Delta, Delta Phi Epsilon, Phi Mu, Phi Sigma Sigma, and Sigma Sigma Sigma, all of which are highly esteemed National Sororities.

Joining a sorority is taking part in the making of the history of all women. Sororities began over 100 years ago by women who believed in strength of friendship and womanhood. This strength became the essence of their power to instill qualities of service and leadership in the lives of women nationwide. Today this tradition still continues, and you are invited to join the bonds of our sisterhood.

The Panhellenic Council encourages you to meet the women of the FIU sororities through our 1997 Formal Rush Week. Joining a sorority is a dynamic experience which will provide opportunities for you to develop to your fullest potential. This week has proved to be unforgettable for many women, and we hope that you will choose to experience it for yourself.

We look forward to meeting you, and once again, on behalf of all the sororities at Florida International University, we welcome you to our family.

Rho Chi

Rho Chi's have been around since the beginning of national Formal Rush and have always been the pivotal point of rotational party week for all rushees. The Greek letters "*Rho Chi*" stand for Rush Counselor. Rho Chi's are all Greek women who have disaffiliated from their organization to serve as mentors, confidants, and mostly a rushees best friend during rush. Rho Chi's have all gone through an application, interview, and four month long training process in the preparation for Fall Rush. Throughout this time, Rho Chi's form their own identity, and form friendships which will last even after re-affiliation. The Rho Chi's aim is to ensure the happiness and comfort of all rushees and help all new students to adjust to life at FIU. A Rho Chi is a representative of all National Member Sororities with the National Panhellenic Council.

Rush Guidelines

1. A rushee shall not be, nor ever have been, and initiated member of a National Panhellenic (NPC) Group.

2. All rushees shall be fully matriculated (12 credits or 9 credits and four classes, one of which being the Non-credit Algebra course, Labs will not be accepted as the fourth class.) at Florida International University. Special status students are not eligible to Rush.
3. A rushee shall not have been a pledge to an NPC group at the same school where she is a rushee within a calendar year.
4. Rushees are asked to attend all assigned parties. Exceptions can only be made by the Panhellenic Rush Chairperson in consultation with the Panhellenic Advisor. In the event of illness or an emergency, a rushee should notify the Rush Chairman or her Rho Chi.
5. A rushee shall consult her Rho Chi or the Panhellenic Advisor before withdrawing from Rush.
6. An oral invitation to join a sorority is not valid, and is a direct violation of Rush Policies. Bids must be given in writing on Bid Day.
7. A student's name must be entered on a master Rush List in order to participate in formal Rush and be properly registered in order to be issued party invitations.
8. Rushees will be guided to Rush Parties by their Rho Chi.
9. A rushee shall fill out the Preferential Bid Card within one hour of the last preference party she attends. The preference card will be turned into the Panhellenic Advisor. Once a card has been signed and turned in, NO CHANGE may be made.
10. Any rushee signing a Preferential Bid Card and receiving a bid at the end of the Rush process shall be bound by agreement for a calendar year while she is at Florida International University.
11. Panhellenic recommends that rushees not single intentional preference. Single intentional preference means putting only sorority down on the Preferential Bid Card.
12. A \$10 Rush registration fee will be required at the time of registration.
13. If a Rush infraction takes place, it must be reported within 10 days. Only rushees, or a sorority as a whole, or a Rush Counselor may report a Rush Infraction.

Questions and Answers

The following sample questions are provided for you, the rushee, to ask each fraternity/sorority during rush events.

Scholarship

1. How does your fraternity/sorority promote scholarship? (study halls, professor surveys, test files, scholarships)
2. What is your fraternity/sorority grade point average, and how does it rank with the other Greek organizations?
3. What grade point average is required for initiation?

Pledgeship

1. Why should I pledge your fraternity/sorority?
2. What does your pledge program consist of?
3. What are my responsibilities as a pledge?

Financial

1. What are the monthly dues? Is an increase expected?
2. Are there ever any extra or special assessments added to the dues?
3. Can you hold a part-time job and still have time for the fraternity/sorority?

Social

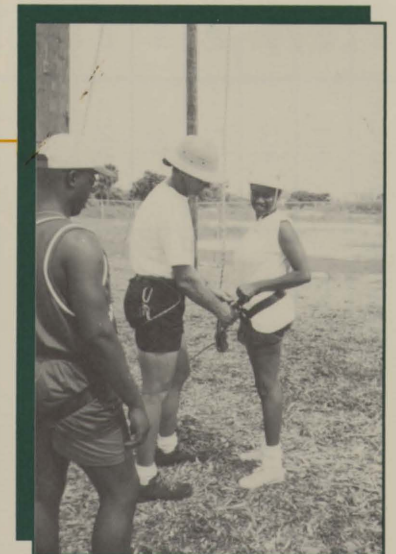
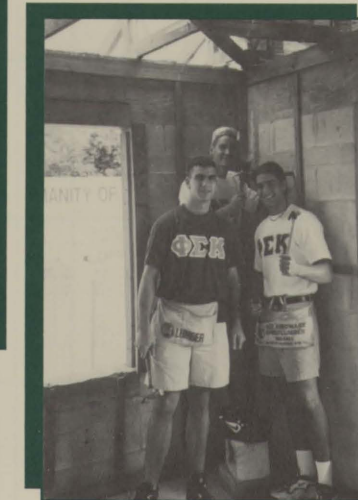
1. What type of social events are planned for the coming year?
2. Why do you enjoy being a Greek organization?

Activities

1. Does your fraternity/sorority have a community service project?
2. How is your fraternity/sorority involved in FIU activities such as homecoming, athletics, comedy show?
3. What type of activities do you participate in with other fraternities/sororities?
4. What activities can and must I participate in as a new member?

Miscellaneous

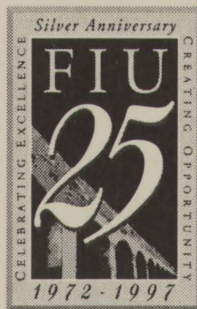
1. What are the fraternities'/sororities' national values and traditions?
2. What duties are expected of members?
3. What kind of involvement do alumni have with your chapter?
4. What makes your fraternity/sorority unique from all the other ones?



Financial Information

	One Time Expense				Semester Expenses (Once Initiated)			
	Pledge Fee	Initiation Fee	Badge	Other	Dues	National Fees	Social Fees	Other
Fraternities:								
Alpha Phi Alpha	Currently Petitioning For a Charter							
Delta Chi	65	145	Included	NA	100	Included	NA	85 (Spring)
Kappa Sigma	45	100	Included	NA	150	Included	NA	NA
Omega Psi Phi	Currently Petitioning For a Charter							
Phi Beta Sigma	Information Not Available							
Phi Delta Theta	Information Not Available							
Phi Sigma Kappa	283	NA	Included	NA	200	Included	NA	NA
Pi Kappa Alpha	225	NA	Included	NA	225	Included	NA	NA
Sigma Alpha Mu	170	175	Included	NA	200	Included	NA	NA
Sigma Phi Epsilon	250	NA	Included	NA	250	Included	NA	NA
Tau Epsilon Phi	Information Not Available							
Tau Kappa Epsilon	85	195	Included	NA	140	87	NA	NA
Sororities:								
Alpha Kappa Alpha	Currently Petitioning For a Charter							
Alpha Xi Delta	165	225	25	NA	120	50	NA	NA
Delta Sigma Theta	NA	550	Included	NA	100/Year	80/Year		
Delta Phi Epsilon	85	175	Included	NA	200	Included	NA	NA
Phi Mu	157	375	Included	NA	120	Included	NA	NA
Phi Sigma Sigma	210	NA	Included	NA	100	110/Year	NA	NA
Sigma Sigma Sigma	110	220	Included	NA	170	Included	NA	NA
Zeta Phi Beta	Information Not Available							

Notes



"The Greek Tradition" publication is presented by the Department of Student Activities and the Greek Governing Councils
Funded by the Student Government Association • Division of University Advancement and Student Affairs
Florida International University
Miami, FL 33199