

40

Golden PanthersTM

Newsletter

Florida International University

Volume 10, Number 2

Winter-Spring, 1992





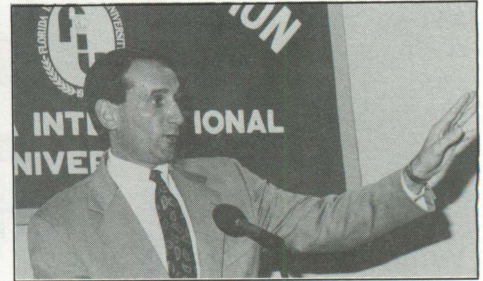
1991 Golden Panther Club Highlights



Kay Fahringer, Mr. and Mrs. Alvah Chapman, Bill Stoiloff and President Maidique at the stone crab dinner.



Dick Young thanks Roger Wyman, Brian Fajole, Alyson Young, Joe Hoy and Rena Lude for their support of Golden Panther Athletics.



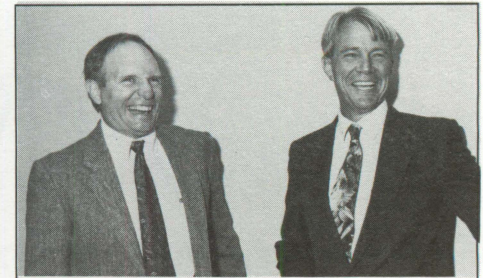
Duke head basketball coach Mike Krzyzewski enlightens the crowd of more than 600 at the stone crab dinner.



Bob Dolan, Tito Gomez, Dave Lamont and Karl Kremser discuss FIU's successful soccer season.



Over 600 attended the tenth annual stone crab tip off dinner, supporting Golden Panther Athletics.



Art Herriott and Karl Kremser laugh it up at the stone crab dinner.



Steve Sauls and Victoria Hernandez, Director of Alumni Affairs, enjoy an evening at the stone crab dinner.



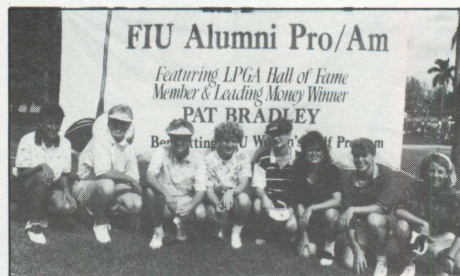
Allen Schwartz introduces members of the Golden Panthers women's golf team.



Becky Pearson (l) and Pat Bradley (r) demonstrate the proper techniques of golf to those who played in the Alumni Pro-Am.



Dick Young, Charlie DeLuca and Allen Schwartz present Pat Bradley with a plaque commemorating her 30 career victories, qualifying her for the LPGA Hall of Fame.



Professionals Brenda Rego, Pat Bradley, Becky Pearson, Michelle Dobek, Nancy Rubin, Liz Strong, Anette Pietersen Gosselin and Shelly Sanders return to their alma mater for the third annual Alumni Pro-AM



The 1991-92 Golden Panther Club executive board: front row (l to r): Dick Young, Gary Allington, Tito Gomez, Jose Toledo, Oscar Fernandez, Angie Angelis. Second row (l to r): Kay Fahringer, Ralph Espinosa, Herb Smith, Steve Eckhardt, Bob Dolan. Back row (l to r): Eleanor McCotter, Albert Lorenzo, Jan Allen, Richard Grund, Orlando Martinez.



Executive Director Bids Farewell

The last three years have been a wonderful experience for me as the executive director of the Golden Panther Club. Your welcome, helpfulness and participation with the many events we hosted was greatly appreciated.

Rarely does one have the opportunity to be a part of building a program from scratch. In September, 1988, we had 90 members and 19 on payroll deduction. Membership now tops 600 and 150 are on payroll deduction.

Corporate sponsorships grew dramatically and endowments grew from one to six. The endowment balance is now over \$100,000.

New events, such as the Alumni/Pro-Am Golf Tournament and Aviño/Bucholz Tennis Day are respected fundraisers and our annual spring drive has the faculty, staff, alumni and the community working together toward a common goal — "Excellence in Athletics." Who can forget the Ludway burgers or the victory party aboard the StarClipper.

Continuing the tradition of the Stone Crab Dinner, the Steve Clark Golf Tournament, Judy Blucker Night and the annual fundraising runs are just a few other great events.

Teamwork builds tradition and there is



finally tradition being established through our players, events and benefits. It was a privilege to be a part of it all.

Working with all of you — the volunteers, the board members, athletes and coaches — has been exciting, yet tiring, but always fun. Even though I am no longer your executive director, I am a member of the Club. Together we can assist the new director and continue the tradition and provide support to our coaches and help our teams achieve success.

Thank you again for your support. Go Golden Panthers!

—Jan Allen

FIU Alumnae Enters LPGA Hall of Fame

Pat Bradley, FIU's first All-American athlete and the all-time leading money winner in the history of the Ladies Professional Golf Association, joined that organization's Hall of Fame this past fall. Bradley won four tournaments during the 1991 LPGA season, giving her 30 victories during her illustrious career.

When she reached the 30 victory plateau, Bradley became an instant member into the most difficult Hall of Fame in all of sports. Her automatic induction meant she joined 11 other women golfers into the Hall.

Bradley finished among the top ten in 20 of 25 LPGA events she entered during the 1991 campaign, an amazing

figure. She led the tour in earnings and became the first (and only) LPGA player to surpass \$4 million in career earnings. Bradley is also the only player in the history of the LPGA to have a tournament named in her honor while still an active playing member — the Planters/Pat Bradley International.

FIU is grateful to Pat for what she has meant to the game of golf and for what she has done for the FIU program. FIU cannot thank Pat enough for her annual return to South Florida for the Pat Bradley Intercollegiate and Alumni Pro-Am Tournament.

On behalf of the Florida International University athletic department, Congratulations to Pat Bradley!



Jose Toledo
President
Golden Panther Club

Dear Golden Panther Club members:

With great pride and enthusiasm I begin my term as the 1991-92 President of the Golden Panther Club. While the club is beginning its fifth year of existence, the nation celebrates the five hundred year anniversary of the discovery of America, which started the great immigration of different ethnic groups to our land and country.

A great mixture of different ethnic groups and working people also makes up our Golden Panther Club Executive Board. With this in mind, our goal is in making FIU athletics succeed.

This year's accomplishments can only be topped by our athletic department's drive for excellence. Some highlights included: our baseball and men's soccer teams winning the TAAC Championship and putting its name in the Division I regionals; our success in women's basketball, women's soccer and cross country; and men's basketball climbing the Division I ladder under second-year head coach Bob Weltlich, just to name a few.

The introduction of the two sports — men's and women's track — will also put us at another level of competition, carving the name of FIU in the college history books.

With the mix of professionals on our board, I know we will succeed in the task set forth, making a better tomorrow for today's athletes. With all of the economic problems facing us today, our work will be even harder. We are confident that we will achieve the goal set upon us and the national recognition that we always wanted and worked so hard for.

As a team, let's strive to work harder as we demonstrated in the past.

—Jose Toledo
President



Baseball Seeks Second Straight NCAA Bid

When looking back on the Golden Panthers 1991 baseball season, one can only smile. Not only did Head Coach Danny Price's squad win 40 games for the fifth time in six years and receive a national ranking by *Collegiate Baseball* magazine, but for the first time his team qualified for an automatic bid to the NCAA Division I Regional Tournament.

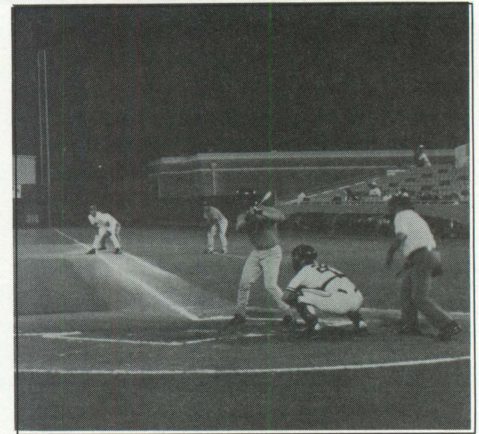
When all was said and done, the pot of gold at the end of the rainbow finally materialized with a championship in the Trans America Athletic Conference Tournament and a trip to Tallahassee with baseball's elite. When FIU defeated Stetson, 10-2 in the TAAC Tournament final in DeLand, Florida on May 4, 1991, eight years of frustration had ended for the Golden Panthers.

The team will be shooting for another TAAC championship and a second straight bid to the NCAA Tournament in 1992. Price must fill some

big holes with the loss of catcher William Scalzitti (.330, 6HR, 39RBI), second baseman Eric Cruz (.288, 25 stolen bases), first baseman Gregg Mucerino (.328, 2HR, 26RBI), All-American relief pitcher Jerry Santos (13 saves, 2.10 ERA) and shortstop David Spinks, the defensive leader of the team.

Price's accomplishments over the past dozen years are no accident, so it wouldn't be surprising if his team challenges for the league title once again. Leading the way among the returning players is left-handed pitcher Jason Abramavicius (10-5 record, All-TAAC honors), outfielders Michael Warner (.330, 9HR, 53RBI), Efrain Ventura (.274, 8HR, 52RBI) and Deron Thornton (.299), infielder Gary Haight (.308, 9HR, 31RBI) and designated hitter Nathan Harvey (14HR, 49RBI).

Also returning and competing for



Michael Warner was a member of Team Florida in the United States Olympic Trials.

time on the mound are Oscar Acharandio (1-1, 3.03 ERA), Todd Lange (3-4, 4.39), Doug Girling (3-3) and Kevin Wehn (1-0, 4.38), along with Eric Alexander, who was 1-1, which included a victory over nationally-ranked Maine, before missing the remainder of the season with an injury. Should he be fully recovered, Alexander could be the backbone of the pitching staff.

Tops among newcomers is pitcher Garvin Alston, who posted a 4-2 record with a 1.76 earned run average in the prestigious Cape Cod Summer League and earned All-American honors at Mercy College (NY) the past two years. Both Alston and Warner participated in the Olympic Trials in November.

The 56-game 1992 season will begin on January 31 against the University of North Carolina-Charlotte.

This year's schedule also features such national powers as Miami (FL) and North Carolina State, along with state rivals South Florida and Central Florida. Price's squad will also play home-and-home series with TAAC foes Stetson, Mercer and the College of Charleston, which should create great excitement at the University Park diamond once again this season.

For ticket information to all Golden Panther games, call the FIU ticket office at FIU-GAME (348-4263).

WMBM-AM Carries Hoops Once Again

WMBM Radio (1490 AM) will air Golden Panther basketball once again in 1991-92, Athletic Director Dr. Dick Young announced.

Steve Michael will handle the play-by-play for the second straight season.

Michael has been in the broadcasting business for the past 16 years, covering minor league hockey and baseball, professional soccer and collegiate basketball and soccer.

The Minnesota native is currently working for SportsChannel, broadcasting tennis and boat racing.

WMBM has a listenership that

reaches Dade and South Broward counties, along with parts of the Bahamas. The station has long been recognized for its continuing service to the black community.

WMBM will air 21 games during the course of the 1991-92 season, plus the Trans America Athletic Conference Tournament will be carried on March 6-7.

"A tie in with WMBM gives FIU exposure in a special area where our student-athletes can serve as role models, while bringing Golden Panther athletics new visibility in the Metro-Dade community," said Dr. Young.



1992 MEN'S BASKETBALL SCHEDULE

Date (Day)	Opponent	Time
Jan. 4 (Sat)	Maine	8:00pm
Jan. 7 (Tue)	South Florida	8:00pm
Jan. 11 (Sat)	Stetson	8:00pm
Jan. 16 (Thu)	Georgia State	8:00pm
Jan. 18 (Sat)	Samford	8:00pm
Jan. 23 (Thu)	at Southeastern La.	8:00pm
Jan. 25 (Sat)	at Centenary	8:05pm
Jan. 30 (Thu)	Mercer	8:00pm
Feb. 1 (Sat)	Georgia Southern	8:00pm
Feb. 8 (Sat)	at Stetson	7:30pm
Feb. 10 (Mon)	Florida Atlantic	8:00pm
Feb. 13 (Thu)	at Georgia State	7:30pm
Feb. 15 (Sat)	at Samford	8:30pm
Feb. 20 (Thu)	Southeastern La.	8:00pm
Feb. 22 (Sat)	Centenary	8:00pm
Feb. 27 (Thu)	at Mercer	7:30pm
Feb. 29 (Sat)	at Georgia Southern	2:00pm
Mar. 2 (Mon)	at Miami	8:00pm
March 6—7	at TAAC Tournament	TBA

All Times Eastern

1992 WOMEN'S BASKETBALL SCHEDULE

Date (Day)	Opponent	Time
Jan. 2 (Thu)	FIU Sun & Fun Classic	8:00pm
Jan. 3 (Fri)	FIU Sun & Fun Classic	TBA
Jan. 4 (Sat)	FIU Sun & Fun Classic	TBA
Jan. 11 (Sat)	at Stetson	5:00pm
Jan. 16 (Thu)	Florida A&M	5:45pm
Jan. 18 (Sat)	Georgia Southern	5:45pm
Jan. 23 (Thu)	at Georgia State	5:00pm
Jan. 25 (Sat)	at Mercer	1:00pm
Jan. 30 (Thu)	at Bethune—Cookman	7:30pm
Jan. 31 (Fri)	at South Florida	6:00pm
Feb. 6 (Thu)	Stetson	7:00pm
Feb. 8 (Sat)	at Southeastern La.	3:00pm
Feb. 13 (Thu)	at Georgia Southern	7:30pm
Feb. 15 (Sat)	at Florida A&M	5:30pm
Feb. 20 (Thu)	Mercer	5:45pm
Feb. 22 (Sat)	Georgia State	5:45pm
March 5—6	at TAAC Tournament	TBA

All Times Eastern

Fall Sports Recap

Cross Country

Head Coach Mike Becker's men's and women's cross country teams each had a successful season in 1991. For the first time in the history of the university, the cross country teams captured the "double," taking home first place in both the men's and women's races in the Trans America Athletic Conference meet, held November 4th in Hammond, Louisiana.

The men's team finished in the top five in six of seven meets, including three first place finishes. The women's team did not place lower than fifth in seven events, including two victories.

Freshman Calvin Whitaker led the men throughout the season, while Vivian Hernandez has been the top runner all season for the women. Whitaker finished fourth in the TAAC meet, followed by Joe Pinto (5th), Chris Chartier (8th) and Brian Herring (10th). Hernandez led the women's charge to the TAAC title with a third place finish, followed by Raquel Guzman (5th), Joanne Kluss (6th), Gina Gabrielle (8th) and Michele Owen (10th). All runners listed above earned All-Conference honors.

Men's Soccer

When the NCAA held its Division I soccer selection meeting on Monday, November 11th, the name Florida International appeared among the top 28 soccer programs in the nation for the very first time. After finishing the season with a 17-2-3 record, a school-record 18 match unbeaten streak and its first Trans America Athletic Conference Championship, Head Coach Karl Kremser's squad got its chance at its first-ever NCAA Division I championship.

FIU was defeated 1-0 by Portland in the opening round of the NCAA Tournament, but still finished with an impressive 17-3-3 mark.

Headlining the team's list of accomplishments is midfielder Don Gaillard. The 5-4 junior from Phoenix, Arizona is one of 16 finalists for the Missouri Athletic Club Player of the Year Award. The winner will be announced in St. Louis on January 6, 1992. Gaillard had seven goals and 11 assists before missing six games due to a sprained knee.

Richard Peer led the team in scoring for much of the season. He had a team-high 14 goals and 2 assists for 30 total points. FIU has outscored its opponents 64-19, while Kike Ruiz, Titto Torrejon and Chris Rue have all added to the explosive offense.

Kremser has also had a solid defense, led by freshmen Trent Tokos and Eric Rue, who both started all 23 contests. Junior goalkeeper Bryan Boes has done a credible job in the net after transferring from Evansville.

Women's Soccer

Coach Everton Edwards's squad forged its way to the team's second best season in the seven-year history of the program with a 9-4-2 record and a No. 19 national ranking. FIU defeated archrival Barry 1-0 with a stunning last second goal. It was only the second time in FIU history that the Golden Panthers had

defeated the Buccaneers.

Catherine Liller, a sophomore from Houston, Texas, broke the career scoring record with her 23rd goal in just two years. She broke the record set by her sister, Christine Liller, now an assistant coach at FIU. She finished the season with a school record 16 goals.

The Golden Panthers captured the championship at the Nike Great Lakes Classic in Milwaukee, Wisconsin. Liller was named offensive MVP and goalkeeper Sue Moy Chin was the defensive MVP. Chin recorded seven shutouts during the year.

FIU received excellent defensive play by Randi Ross, Misty Parr, Laura Jeffery and Allison Hayman.

Along with the victory over Barry, the team defeated Lynn University (formerly the College of Boca Raton) and established Edwards' squad as a force to be reckoned with in the future.

Women's Volleyball

Coming off last season's New South Conference Tournament Championship, the volleyball team struggled for much of the 1991 campaign. Against an upgraded Division I schedule that included powerhouses Florida, Florida State, Clemson and Maryland, Head Coach John Trojaniak's squad posted a 5-20 record and struggled without last year's NSWAC Player of the Year Jovanska Rosich, who left the team last summer to play with her native Puerto Rican National Team.

Even though FIU managed only five wins, the team finished the season ranked third nationally in service aces per game. Freshman Liz Moore led the TAAC with 85 aces in 75 games.

Melanie Krupowicz and Jennifer Marek received all-tournament honors during the season at the FIU Invitational and Florida 4 Classic, respectively. Krupowicz posted 305 kills, while Marek had 602 assists.

Men's and Women's Golf

The FIU men's and women's golf teams are now officially taking a new direction, as John Cusano has been hired as the coach of the Golden Panthers program. Cusano, a teaching professional for the past 22 years in the Dade and Broward County areas, will oversee the entire collegiate golf program at FIU.

The men struggled in early Fall competition with tenth place finishes at both the Yale Invitational and Stetson Invitational. However, the squad rebounded to place fourth at the Embry Riddle Intercollegiate and qualified for the state tournament.

After the fall season, Derrick Cox led the team with a 77.9 scoring average, while Chris Allen and Ignacio Garcia were right behind at 78.3. Allen had the team's best individual finish, an eighth place at the Embry-Riddle Tournament.

The women posted a season-best runner-up finish at the FIU/Pat Bradley Intercollegiate in November. Moira Dunn, the team's individual leader in all four Fall tournaments finished third in the Pat Bradley. She finished the fall season with a 77.0 scoring average.



Endowments On The Rise: Fahringer Endowment First To Reach \$50,000

There are currently five endowments established with Golden Panther Athletics and a sixth is on the way. The following is a rundown on the scholarships and their background.

Pat Bradley Endowment — Given annually to the outstanding women's golfer who displays a committed attitude to be the best she can be. Established by the Hall of Fame golfer as a way to "give back" to the school which allowed her to pursue her goals of becoming the best she can be. Past winners include: Jennifer Barr and Moira Dunn. The current balance of this endowment is \$10,546.

Judy Blucker Endowment — Given annually to a female athlete who has completed her eligibility and desires to continue her education. The person must have

displayed academic excellence and sports "woman"ship during her career. Established by the Friends of Women's Athletics in honor of Dr. Blucker for her commitment to the development of women's athletics at FIU. Past winners include: Adrienne Jackson (women's basketball) and Karen Collins (volleyball). Current balance is \$7,940.

Fahringer Endowment — Given annually to a player from the men's or women's golf program who displays excellence in academics and athletics. Established in memory of Kay Fahringer's late husband, Ed, an avid golfer. Past Winners include: Chet Bozdog and Jennifer Barr. This was the first endowment at FIU and is a fully funded endowment with a current balance of \$50,503

Anne Lennon Endowment — Given annually to a men's basketball player who has excelled in academics and displays leadership and sportsmanship. Established by Betty and Stuart Sachs in memory of Betty's sister, Anne Lennon. Past winners include: Charles Payne, Tony Regueira, Anthony Pinder and Ted Guilbeaux. Current balance is \$16,641

Amancio Suarez Endowment — Given annually to a member of the baseball team who displays leadership on and off the diamond. Past winners include: Jorge Laguardia, Jose Vasquez, Javier Rodriguez and Gary Haight. Current balance \$12,149.

The sixth endowment will be from Ryder System, Inc., honoring the team captain of the women's golf program with an initial investment of \$5,000 this fall.

NCAA Reform To Benefit College Athletics

The National Collegiate Athletic Association (NCAA) has continued its attempt at reform in collegiate athletics. The newest set of rule changes focuses on three aspects of college athletic departments: 1) cutting the operating costs 2) increasing the emphasis on academics 3) bringing parity among schools. Some of the rule changes adopted by the NCAA include the following:

Team practices are limited to 20 hours per week. This includes practice time, weightlifting, film sessions and team meetings. The number of games each sport can play has been reduced. Basketball teams can play only 27 regular season games (down from

28), while baseball teams are limited to 56 contests in 1992 (down from 60).

Student-athletes must take the ACT or SAT examination before visiting a university. The ACT or SAT exam scores will be sent to the particular universities from the testing center, not the student-athlete's high school. Student-athletes can only travel to athletic events 48 hours prior to the event.

There have been several rule changes regarding recruiting. A coach can only evaluate (physically watch that high school or junior college athlete play) a prospective student-athlete four times per year. A coach can only call the prospective student-athlete

one time per week and cannot contact the prospective student-athlete until his/her senior year.

All schools must eliminate athletic dormitories and schools can only provide one "training table" meal per day for the athletes.

Beginning with the 1993-94 academic year, basketball scholarships will be reduced to 13, from the current number of 15. All other sports will have scholarships reduced by ten percent from their current level.

"I believe they are good rules," said FIU Athletic Coordinator Mike Becker. "Most of the rules are aimed in a very positive direction, but I don't think they will be the last of the reforms."



Winter/Spring 1992 Home Schedule

Sun	Mon	Tues	Wed	Thurs	Fri	Sat
December	M—Basketball vs. Barry (8:00) 2	3	4	5	6	7
8	9	10	11	W—Basketball vs. Texas Southern (5:45) M—Basketball vs. St. Thomas (8:00) 12	13	W—Basketball vs. SE Louisiana (7:00) 14
15	16	17	18	W—Basketball vs. Minnesota (7:00) 19	W—Basketball vs. Harvard (7:00) 20	M—Basketball vs. Florida (8:00) 21
22	23	24	25	26	27	28
29	30	31				

January			1	W—Basketball's Sun & Fun Classic 2	W—Basketball's Sun & Fun Classic 3	W—Basketball's Sun & Fun Classic 4
5	6	M—Basketball vs. South Florida (8:00) 7	8	9	10	M—Basketball vs. Stetson (8:00) 11
12	13	14	15	W—Basketball vs. FAMU (5:45) M—Basketball vs. Georgia State (8:00) 16	17	W—Basketball vs. Georgia Southern (5:45) M—Basketball vs. Samford (8:00) 18
19	20	21	22	23	M—Tennis vs. Rollins (1:00) 24	M—Tennis vs. Miami (1:00) 25
26	27	28	W—Tennis vs. Harvard (TBA) 29	M—Basketball vs. Mercer (8:00) 30	Baseball vs. UNC—Charlotte (7:00) 31	

February						Baseball vs. UNC—Charlotte (1:00—DH) M—Basketball vs. Georgia Southern (8:00) 1
Baseball vs. UNC—Charlotte (1:00) 2	3	W—Tennis vs. Florida Atlantic (2:00) 4	5	W—Basketball vs. Stetson (7:00) 6	Baseball vs. NC State (7:00) 7	Baseball vs. NC State (1:00) 8
Baseball vs. NC State (1:00) 9	M—Basketball vs. Florida Atlantic (8:00) 10	11	12	13	14	M—Tennis vs. Stetson (1:00) 15
Baseball vs. Miami (1:00) 16	17	M—Tennis vs. Barry (2:00) Baseball vs. St. Francis (7:00) 18	Baseball vs. St. Francis (7:00) 19	W—Basketball vs. Mercer (5:45) M—Basketball vs. SE Louisiana (8:00) 20	21	W—Basketball vs. Georgia State (5:45) M—Basketball vs. Centenary (8:00) 22
23	24	25	W—Tennis vs. Barry (2:00) 26	27	28	Baseball vs. Jacksonville (7:00) 29

Schedule subject to change.



Blue & Gold Shoppe

Show Your Golden Panther Pride!

Item No.	Item Description	Unit Cost
001	Navy/Red FIU T-Shirt (Sizes: S M L XL)	\$10.00
002	All-Around Gold/Navy T-Shirts (Sizes: S M L XL)	\$14.00
003	Sweatshirts Color: Navy (Sizes: S M L XL)	\$15.00
004	Sweatpants Color: Navy (Sizes: S M L XL)	\$15.00
005	Golf Shirts (Sizes: S M L XL)	\$26.00
006	Gym Shorts (No Pockets) Color: Navy & Gray (Sizes: S M L XL)	\$10.00
007	FIU Zebra Cap	\$7.00
008	FIU Golf Cap	\$7.00

Name: _____
 Address: _____
 City: _____
 State & Zip Code: _____
 Telephone: _____



Item No.	Item Description	Size Adult	Qty.	Unit Cost	TOTAL
Method of payment:				Total Cost	
<input type="checkbox"/> Check <input type="checkbox"/> Money Order				FL Sales Tax (add 6%)	
				Subtotal	
				Shipping	\$3.00

Please send us information about jobs, promotions, awards, etc. to:
 "Where Are They Now?" Florida International University, Golden Panther Arena, Miami, Florida 33199

FOR ALL YOUR PRINTING NEEDS



- BUSINESS CARDS
- LETTERHEADS
- ENVELOPES
- NCR FORMS
- TAGS
- LABELS
- FLYERS
- PAMPHLETS

Tags & Labels of Florida, Inc.
 MARINA LAKES BUSINESS PARK
 4990 S.W. 72nd AVENUE (UNIT 108)
 MIAMI, FLORIDA 33155
 PHONE: (305) 665-5202
 FAX: (305) 665-3178

The Golden Panther Club
 c/o Intercollegiate Athletics
 Florida International University
 University Park
 Miami, FL 33199

Not printed at State expense.