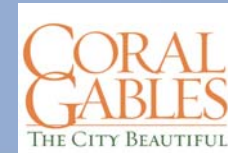


CITY OF CORAL GABLES MERCHANT / COMMUNITY MEETING



PROJECT TEAM



City of Coral Gables

- Glenn Kephart, P.E. – Acting Public Works Director
- Ernesto Pino, R.A. - Public Works Ass. Director
 - Serves as Project Manager
- Maria Higgins Fallon – Public Affairs Manager



Business Improvement District

- Marina S. Foglia – Executive Director



AECOM

- James Koepp, R.A.



Cooper, Robertson & Partners

- Earl Jackson IV, AIA
- William Kenworthy, AIA

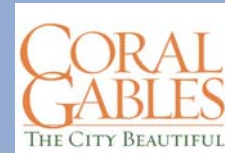
COOPER ROBERTSON

Rodriguez and Quiroga Architects

- Ivan Bibas,
- Sherry Shu Zhang

RODRIGUEZ AND QUIROGA
ARCHITECTS CHARTERED

PROJECT TEAM



Ric-Man International, Inc.

- Victor G. Menocal, Senior Project Manager
- Ryan Spradlin, Superintendent
- Ryan Phillips, Construction Coordinator

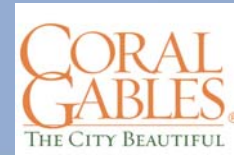


Stantec Consulting Services Inc.

- Sandra Hodge – Public Information Officer
- Roberto Gutierrez, P.E. – Project Manager



PROJECT DESIGN CONCEPT



Miracle Mile



THE PRIMARY GOAL OF THE MIRACLE MILE STREETSCAPE PROJECT IS TO CREATE ONE OF THE WORLD'S MOST NOTABLE STREETS AND STRENGTHEN DOWNTOWN CORAL GABLES AS A PREMIERE RETAIL DESTINATION IN SOUTHERN FLORIDA.

IN ORDER TO CREATE A MORE VIBRANT AND ENGAGING MIRACLE MILE, SIDEWALKS WILL BE WIDENED TO 23 FEET TO CREATE MORE CAPACITY FOR FOOT TRAFFIC AND TO ENCOURAGE BUSINESSES TO EXTEND OFFERINGS TO THE OUTDOORS, AS A CURB-LESS STREET, THE CITY AND BID NOW

HAVE THE OPPORTUNITY TO EXTEND ACTIVITIES AND SPECIAL EVENTS BEYOND THE LIMIT OF THE SIDEWALK WITHOUT A CHANGE IN GRADE, CREATING A MORE PEDESTRIAN FRIENDLY ENVIRONMENT.



MIRACLE MILE
COOPER ROBERTSON

CITY OF CORAL GABLES
MIRACLE MILE & GIRALDA AVENUE STREETSCAPE DESIGN



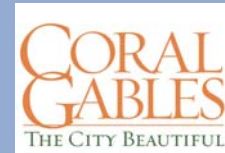
NATURAL STONE IS BEING USED TO PAVE ALL PEDESTRIAN AREAS OF MIRACLE MILE. IT HAS BEEN SELECTED FOR ITS RESILIENT QUALITIES, ITS COLOR AND BEAUTY, AND ITS AUTHENTICITY. IT IS EXPECTED TO LAST FOR HUNDREDS OF YEARS, AND ALL COLORS USED HAVE A COORDINATED BLUE HUE IN SUNLIGHT. EXTENDING PAVING BEYOND THE LIMIT OF THE SIDEWALK TO COVER PARKING AREAS IS A TRAFFIC CALMING MEASURE THAT IS EXPECTED TO ENHANCE THE PEDESTRIAN EXPERIENCE.



MIRACLE MILE
COOPER ROBERTSON

CITY OF CORAL GABLES
MIRACLE MILE & GIRALDA AVENUE STREETSCAPE DESIGN

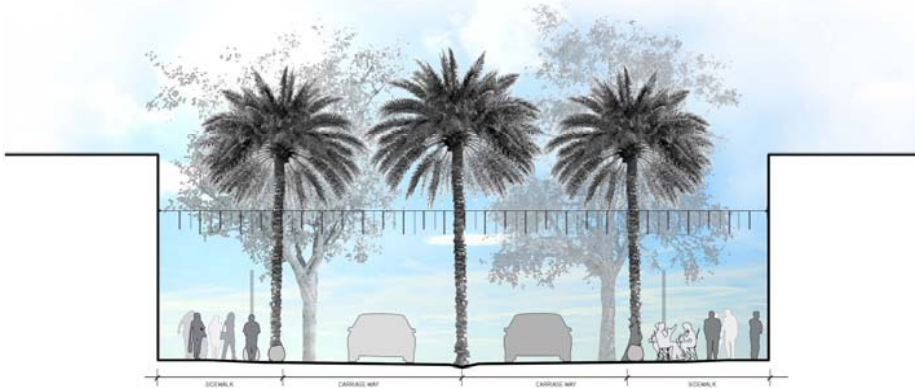
PROJECT DESIGN CONCEPT



Giralda Avenue



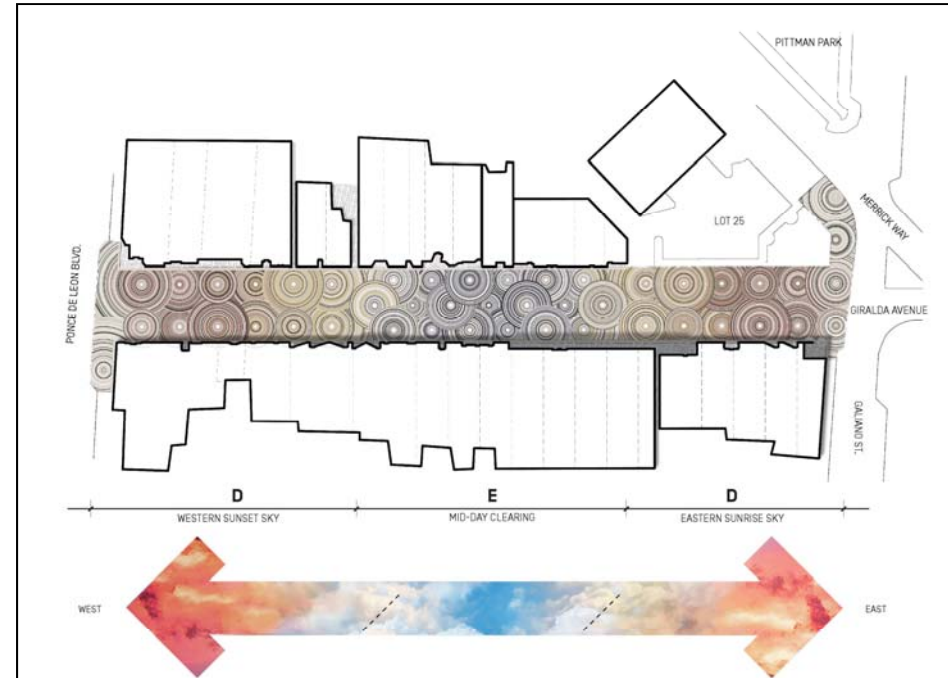
GIRALDA AVENUE IS THE HOTBED FOR FOOD AND BEVERAGE IN DOWNTOWN CORAL GABLES. SOMETIMES CALLED RESTAURANT ROW, IT IS HOME TO GIRALDA UNDER THE STARS AND OTHER EVENTS. THE DESIGN FOR GIRALDA AVENUE BETWEEN PONCE DE LEON AND GALIANO STREETS WILL REMOVE THE EXISTING CURBS AND CONNECT STOREFRONT TO STOREFRONT WITH A UNIFIED SURFACE THAT ACTS MORE LIKE A PLAZA THAN A STREET.



THE DESIGN HAS PUSHED THE STREET TREES OUT TO PROVIDE MORE ROOM IN FRONT OF BUSINESSES AND OPENS THE OPPORTUNITY FOR MANAGED STREET CLOSURE ON EVENINGS AND WEEKENDS FOR FULL PEDESTRIAN OCCUPATION.

GIRALDA AVENUE: RENDERING / STREET SECTION
COOPER ROBERTSON

CORAL GABLES MIRACLE MILE & GIRALDA AVENUE STREETSCAPE DESIGN



THE STONES ARE SET IN CONCENTRIC RAIN DRIP PATTERNS THAT FEATURE AN ARRAY OF COLOR TO CONCEPTUALLY CAPTURE THE WONDER OF THE COLOR AS IT CHANGES IN THE SKY THROUGHOUT THE COURSE OF THE DAY. WARMER REDS AND YELLOWS ARE PRESENT AT THE ENDS OF THE STREET TO PICK UP ON THE COLORS OF SUNRISE AND SUNSET, COOLER BLUES AND WHITES ARE PRESENT IN THE MID-BLOCK TO CAPTURE THE MID-DAY COBAL.



THE GRANITE PALETTE CHOSEN GIVES US A GREAT RANGE OF COLOR THAT IS EXPECTED TO REMAIN TRUE FOR GENERATIONS AND CREATES A HARD/RESILIENT SURFACE UPON WHICH THE LIFE OF CORAL GABLES CAN THRIVE.



GIRALDA AVENUE
COOPER ROBERTSON

CITY OF CORAL GABLES
MIRACLE MILE & GIRALDA AVENUE STREETSCAPE DESIGN

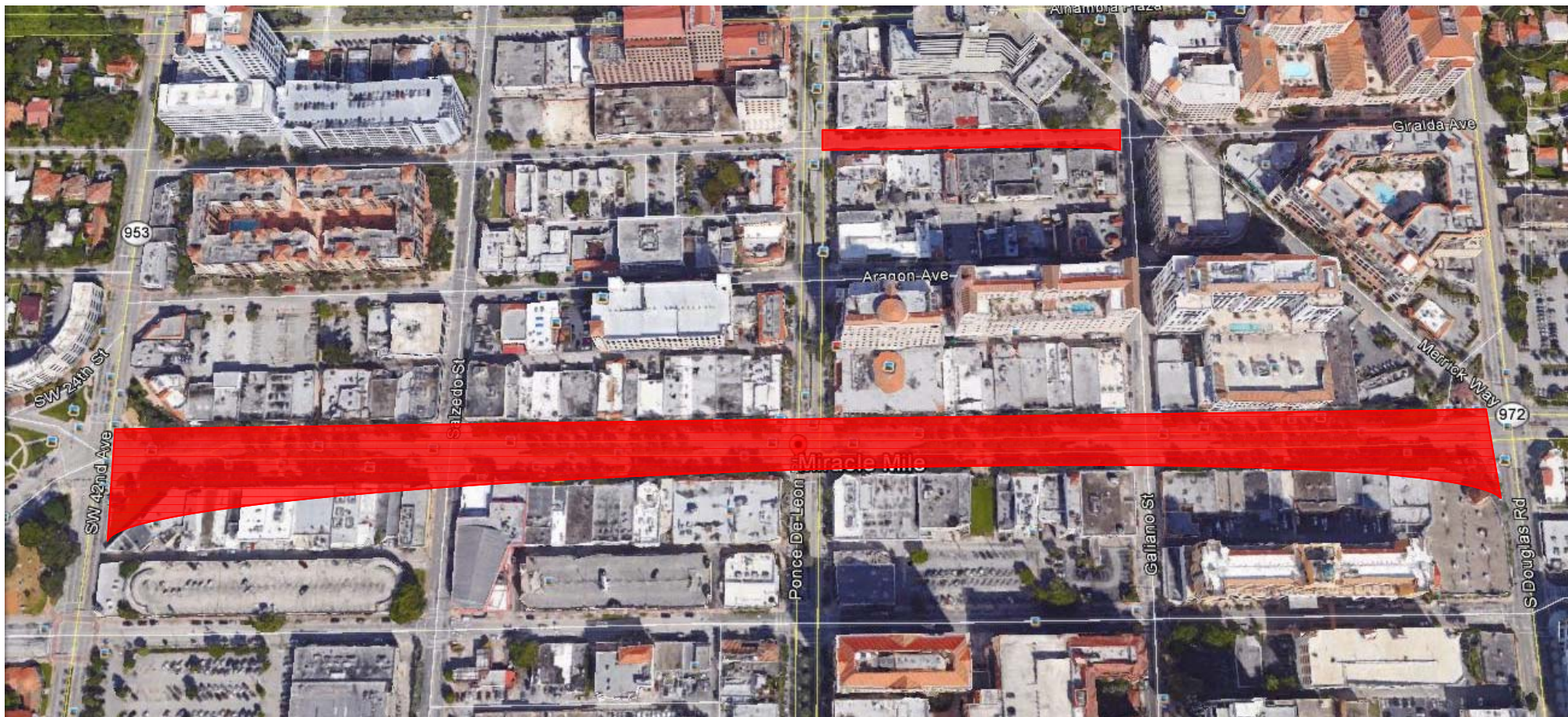
PROJECT LIMITS

Miracle Mile

- Begins at Douglas Road on the east side to Le Jeune Road on the west

Giralda Avenue

- Begins at Galiano Street on the east to Ponce De Leon Boulevard to the west



Miracle Mile & Giralda Avenue

- Root Pruning of Oaks to Remain and Relocation of 4 Oak Trees
- Water Main Improvements thru Miami-Dade County
- Stormwater Improvements
- New Decorative Lighting including replacement of all underground electrical conduits
- Conduits for CCTV
 - Coordination with the Future City Project
- Rehabilitation of Fountains on Le Jeune Road
- Landscape and Irrigation
- Pavers on Sidewalk and Parallel Parking Area
- New Roadway Resurfacing
- Signage and Pavement Markings
- Way finding Signage
 - Kiosk identifying businesses on Miracle Mile & Giralda Avenue
 - Valet Signs
 - Self-Park Signs
 - Paseo Signs
- Street Furniture
 - Trash Cans
 - Bike Racks
 - Shell Reef Benches
 - Stone Bollards
 - Light Furniture – City to Purchase
- Not Included within this Contract
 - Art in Public Spaces
 - Surface Lot (LOT 25) on Giralda Avenue and Galiano Street
 - Alleyway Improvements
 - Grease Traps



MIRACLE MILE TIMELINE – 18 Months

Construction Permitting, Root Pruning & Relocation of Oaks

- April 8, 2016 to June 2016

Underground Utilities & Roadway Reconstruction – Work can be completed earlier depending on Miami-Dade County Permit issuance

- May to June 2016

Miami-Dade WASD Water Main

- Miami-Dade County Commission JPA Approval - May-June 2016
- Construction – TBD

Streetscape Improvements – Demolition, Tree Installation and Pavers

- June 2016 to June 2017, 12 months.

Furniture, understory plants, signs & kiosks and final completion including punchlist

- June to September 2017

GIRALDA AVENUE TIMELINE – 5 Months

Miami-Dade WASD Water Main

- Miami-Dade County Commission JPA Approval - May-June 2016
- Construction – May-June 2016

Underground Utilities & Lane Reconstruction

- June 2016

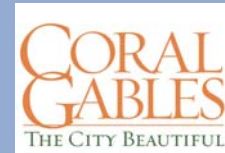
Streetscape Improvements – Demolition, Tree Installation and Pavers

- June 2016 to October 2016

Furniture, understory plants, signs & kiosks and final completion including punchlist

- October 2016 to November 2016

PAVER SEQUENCING



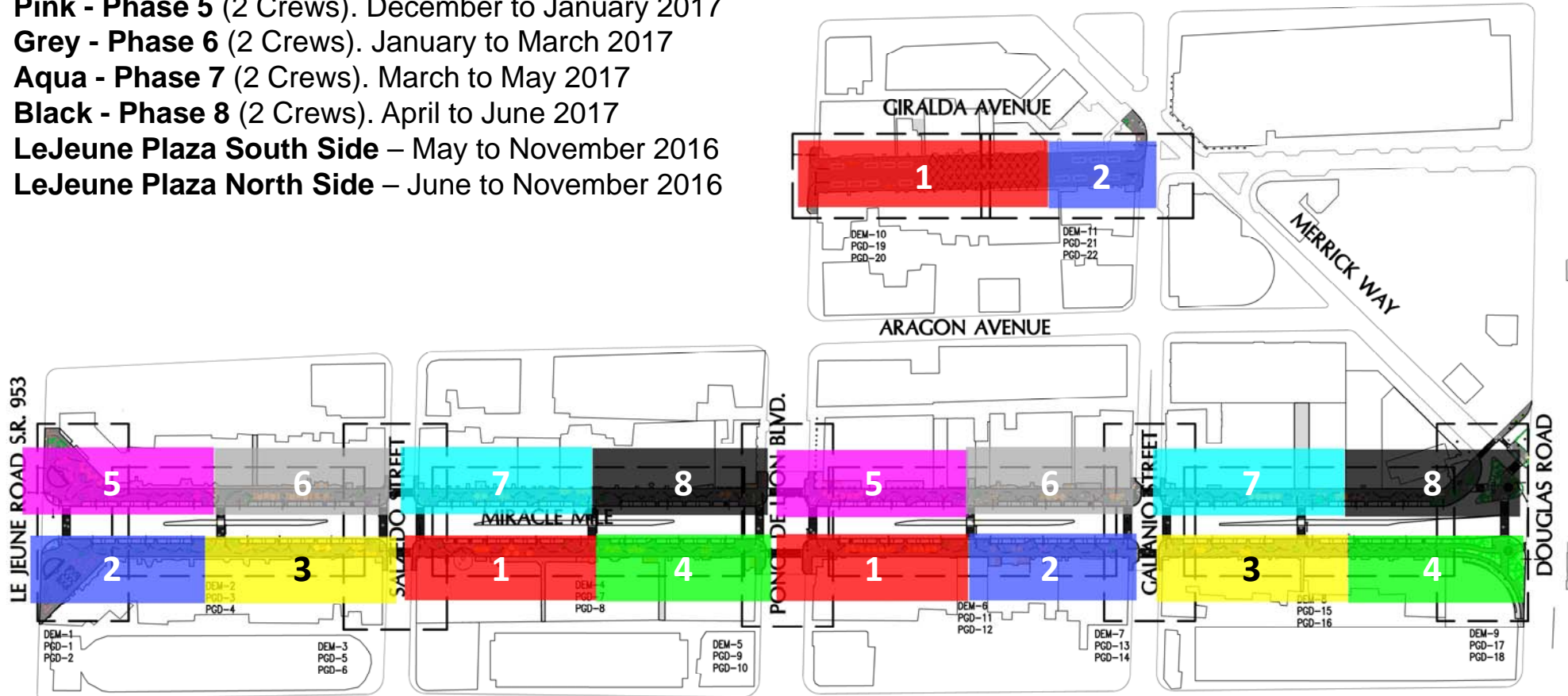
SEQUENCING

MIRACLE MILE

- RED - Phase 1** (3 Crews). June to August 2016
- Blue - Phase 2** (3 Crews). July to September 2016
- Yellow - Phase 3** (2 Crews). September to November 2016
- Green - Phase 4** (2 Crews). October to December 2016
- Pink - Phase 5** (2 Crews). December to January 2017
- Grey - Phase 6** (2 Crews). January to March 2017
- Aqua - Phase 7** (2 Crews). March to May 2017
- Black - Phase 8** (2 Crews). April to June 2017
- LeJeune Plaza South Side** – May to November 2016
- LeJeune Plaza North Side** – June to November 2016

GIRALDA AVENUE

- RED - Phase 1** (3 Crews). June to August 2016
- Blue - Phase 2** (3 Crews). August to October 2016



Main Objective is to keep the community and property owners well informed throughout the project:

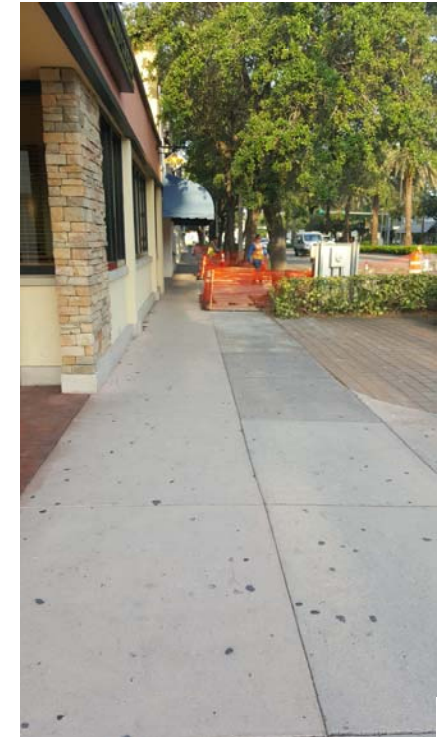
- Construction Groundbreaking – April 28, 2016
- Meetings with individual owners, businesses and associations
- Community Merchant Meeting – April 25, 2016
- Project website – www.gablesstreetscape.com
- Weekly Traffic Impact Reports
- Monthly Status Reports
- Social Media
- BID Website
- Variable Message Boards – 10 days prior to major traffic shift or shutdown



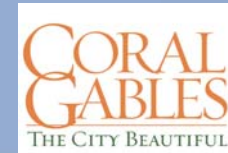
TYPICAL CONSTRUCTION IMPACTS

Motorists, pedestrians, consumers, and business owners may experience one or more of the following inconveniences:

- Periods of dust and noise
- Pedestrian and vehicular traffic impacts
- Temporary road closures
- Construction crews and equipment within work zone and adjacent area
- Storage of equipment on site
- Storage of materials / pavers on site
- Parking spaces will be closed within work zone and adjacent areas



EFFORTS TO MINIMIZE IMPACTS



We will implement the following procedures to minimize impacts to motorists, pedestrians, consumers and business owners:

- Minimize Impacts to the access of all businesses
- Valet Services will remain available
- Dust control and street sweeping, as needed
- Attempt to perform all full road-closures during the night
- Work zones will be limited to half blocks at a time
- All materials will be disposed to the yard
- Weekly window washing of impacted area
- Construction will avoid work in front of businesses during special events
- Contractor will stop construction for pre-approved special events
- Provide additional “Open for Business” Signage to promote businesses
- Promote Available parking at the parking garages



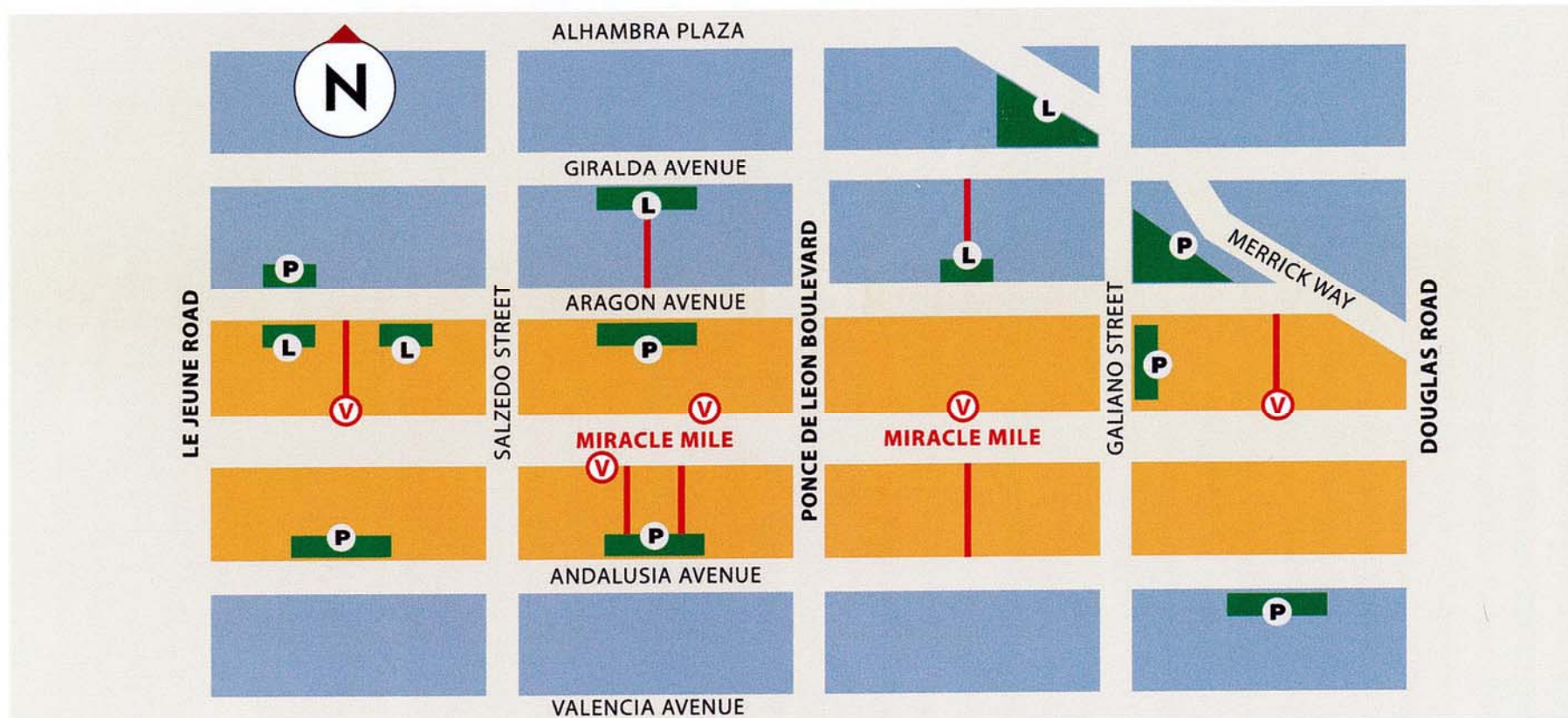
PARKING DURING CONSTRUCTION



Easy Parking Options

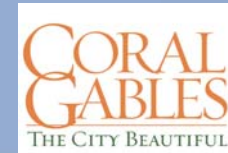


L Meter - \$1.25 an hour **P** Garage - \$1-3 an hour **■** Credit Card Accepted **V** Valet - \$5 **—** Paseos



V Valet parking is Centralized on Miracle Mile, meaning you can drop off your car at any station, and pick it up at a different station on Miracle Mile.

PUBLIC INFORMATION CONTACTS



Construction Information Line

786-444-6383

Website (available next week)

www.gablesstreetscape.com

Stantec Consulting Services Inc.

Sandra Hodge

Public Information Liaison

Sandra.hodge@stantec.com

Ric-Man International, Inc.

Victor G. Menocal

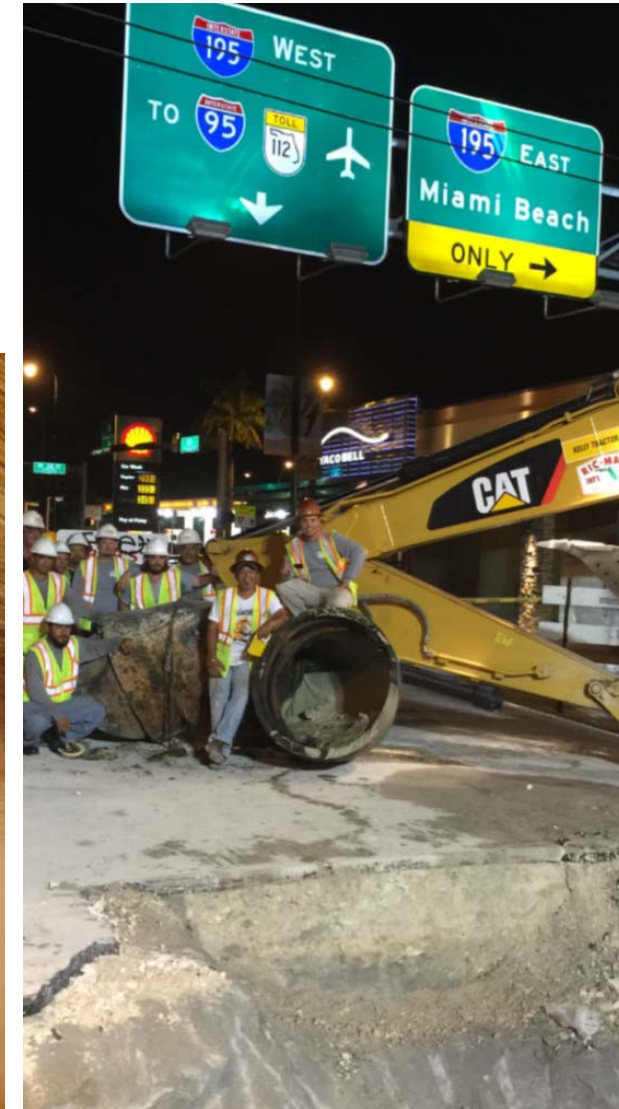
Senior Project Manager

Victorm@Ric-man.us

Ryan Phillips

Construction Coordinator

ryanp@ric-man.us



Coral Gables Miracle Mile & Giralda Avenue Streetscape Project

QUESTIONS AND ANSWERS

