

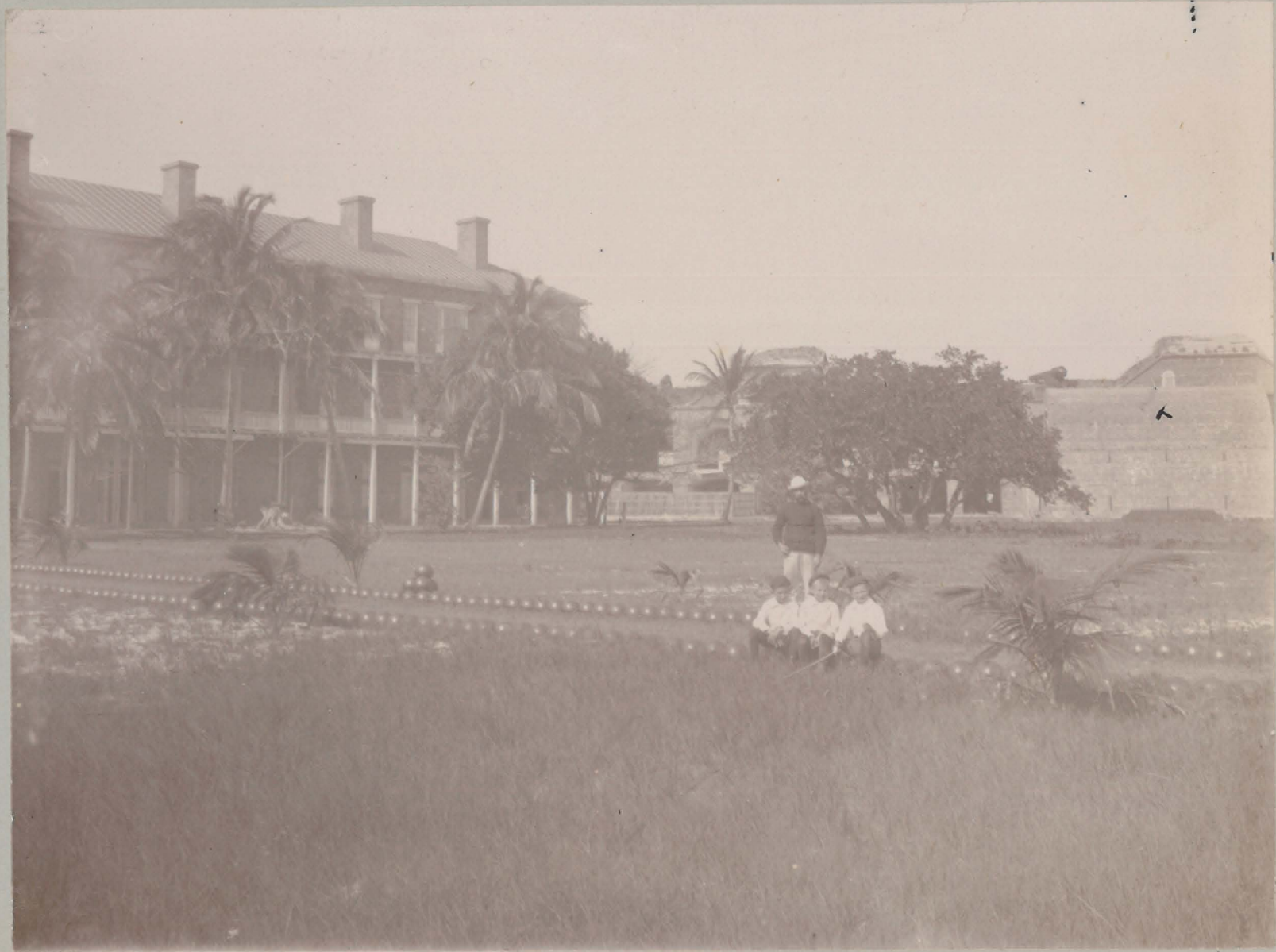
92-F-29-1



Old guard room and sally port.

EASTERN HALF OF SOUTH CURTAIN.

92-E-29-2



Incomplete Storage Magazine.

EAST END OF OFFICERS BUILDING.

92-F-29-3



OFFICERS BUILDING.

4

92-F-29-4



BARRACKS.

Fort Jefferson

A



Light House Keepers Quarters.

BARRACKS.

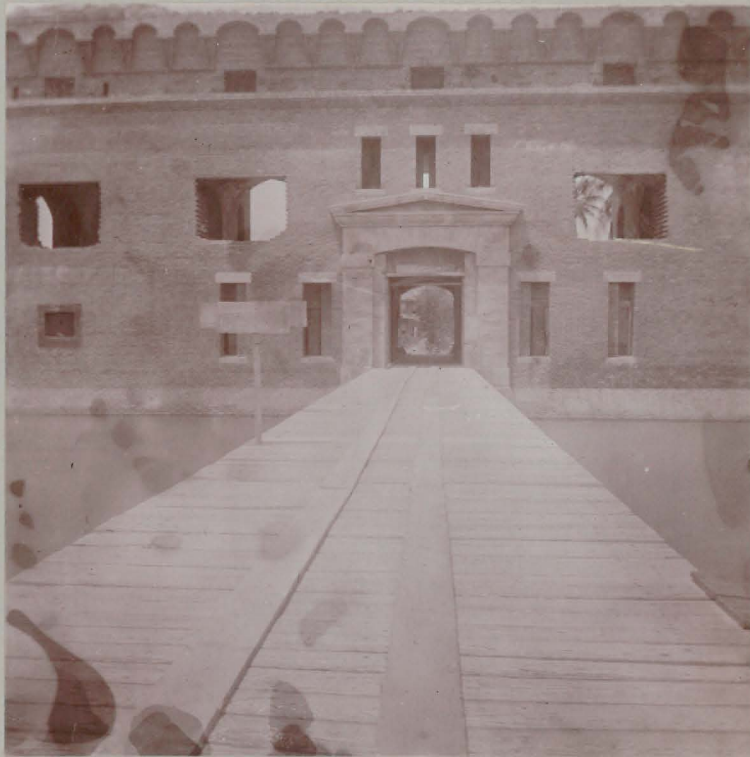
B



BARRACK & PARADE.
FROM WEST.

92-F-29-6

A



SALLY PORT.

B



OFFICERS BUILDING.
FROM SOUTH-WEST.

A



N.C.O. QUARTERS & OFFICERS BUILDING.

B



Hot Shot Furnace.

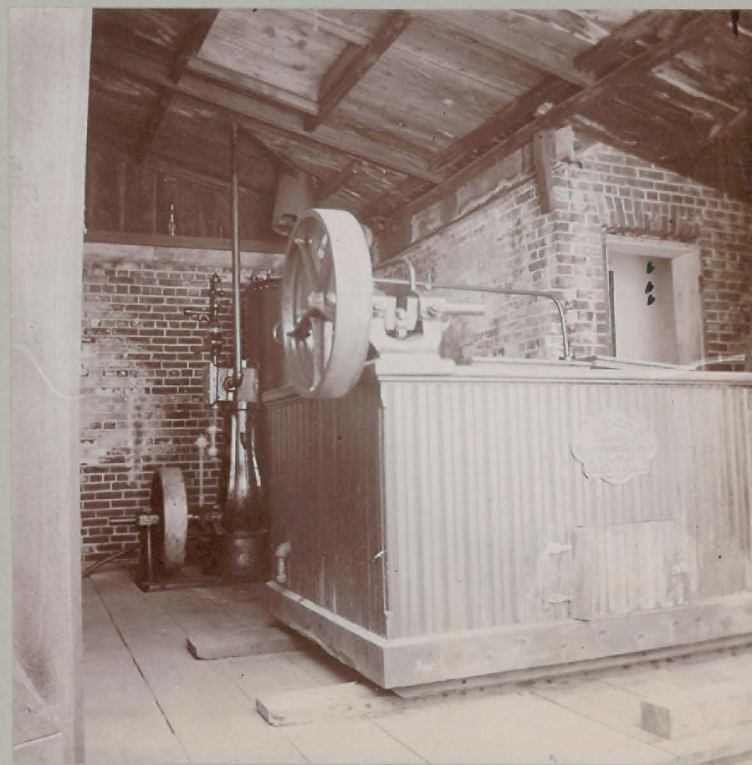
EAST END OFFICERS BUILDING.

A



DR. WILLIAMS OFFICE
OFFICERS BUILDING.

B



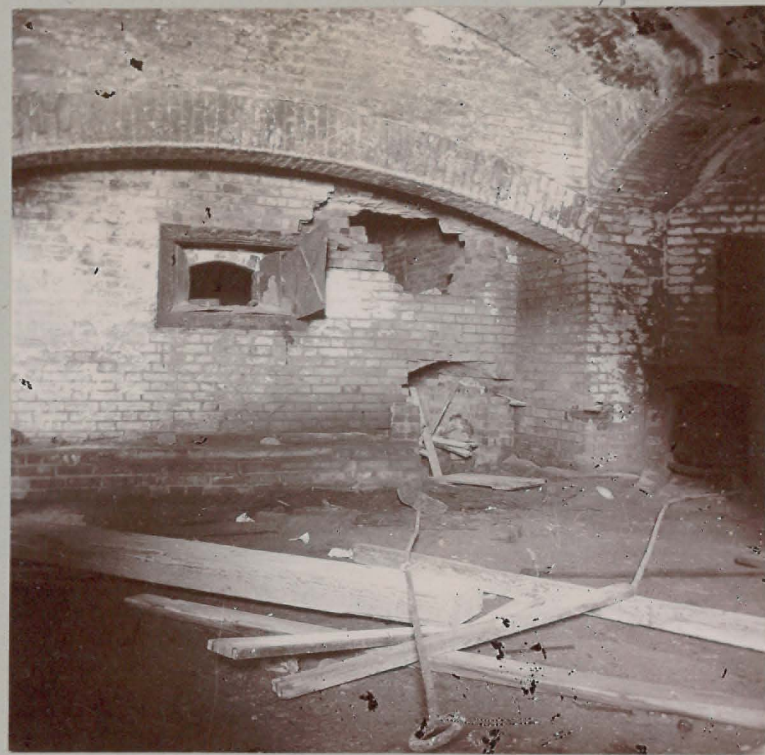
Property of Quarantine Service.

ICE MACHINE.
IN DETACHED KITCHEN, OFFICERS BUILDING

92-F-29-9

92-F-29-9A

A



Ovens.
IN CASEMATES, LOWER TIER.

B.



HALL 1ST FLOOR OFFICERS BUILDING.

A



Telegraph Office.

Ord. Sgts Qrs.

REAR N.C.O. QUARTERS.

B



Detached Kitchens

REAR OFFICERS BUILDING.

92-F-29-11B

21

A.



Sally Port.

Quarantine Dock.

TRAVERSE MAGAZINE "A."

B

22



CASEMATES.

92-F-29-12A

21

A.



SECOND TIER OF CASEMATES.

B.

28



ROOM 3^d FLOOR OF BARRACK.

92-F-29-13B



N. E. Point of land.

BASTION "C."



Dr. Mudd's Cell.

BASTION "F."



Quarantine Dock

OLD WHARF & BUOY HOUSE.
SITE OF PROPOSED WHARF & COAL SHEDS.



- Shoals -

"Bird Keys" looking N.W.

FROM BASTION "F."

15A



LOOKING TOWARDS SALLY PORT.
FROM NORTH-WEST.

15B



Buoy House. Enclosed Tank & Cistern
20,000 gals. Hospital, M.H.S.

SOUTH-WEST POINT OF LAND.

3A



Seawall.

Buoy Wharf & Cistern

B

24



PARADE FROM NORTH-WEST.

SOUTHWEST POINT OF LAND.
3 3/4 ACRES.