

14 June 63



Royal Palm Isles

OAKLAND PARK BEACH BOULEVARD AND N.W. 18TH AVENUE

FORT LAUDERDALE, FLORIDA



14 June
63



Royal Palm Isles

fine custom built homes



Price list effective June 1, 1963

Lot size
included in
purchase price

Non-waterfront

Waterfront

Optional:
Pool, patio,
screening

PLACID	2 bedroom/1 bath screened porch	60' x 100'	\$12,580	\$13,780	
MONTEREY	2 bedroom/1 bath family room-garage Optional: Gunite pool, patio and screening	60' x 100'	\$12,590	\$13,790	\$2,690
NANTUCKET	2 bedroom/2 bath, screened porch breakfast room	60' x 100'	\$14,990	\$16,190	
DREXEL	2 bedroom/2 bath, screened porch enclosed garage	60' x 100'	\$14,790	\$15,990	
CATALINA	3 bedroom/2 bath, Optional: Gunite pool, patio and screening	60' x 100'	\$13,500	\$14,700	\$2,490
GREENBRIAR	3 bedroom/2 bath, Optional: Gunite pool, patio and screening	67½' x 100'	\$15,300	\$16,500	\$2,490
WESTCHESTER	3 bedroom/2 bath, garage, solarium Optional: Gunite pool, patio and screening	67½' x 100'	\$17,400	\$18,600	\$2,590

1941 W. Oakland Park Boulevard (Ocean Blvd. on N.W. 31st St.) and N.W. 18th Avenue. Telephone LU 1-6410.

Prices and specifications subject to change without notice. Shrubs, trees, sprinkler system, wallpaper, decorative mirrors and refrigerator not included.

Royal Palm Isles

fine custom built homes



Your Place in the Sun

You are entering an established community of fine custom built homes, built in the distinctive surroundings of Fort Lauderdale. Wide, deep canals and broad boulevards lead to churches, schools, shopping centers, beaches and recreation areas – all the gracious living that is Fort Lauderdale.

Your Royal Palm home is designed for the most discerning buyer who insists upon gracious living. The architecture, the careful planning, the fine construction, convenient location, and amazing value of these homes will satisfy your every requirement. Your new home will indeed be your place in the sun.

A Tradition of Pride

Royal Palm Isles, Builders and Developers, are specialists in building planned communities. Naturally, we are proud of our reputation for quality and integrity. We invite you to contact any of the following references should you wish.

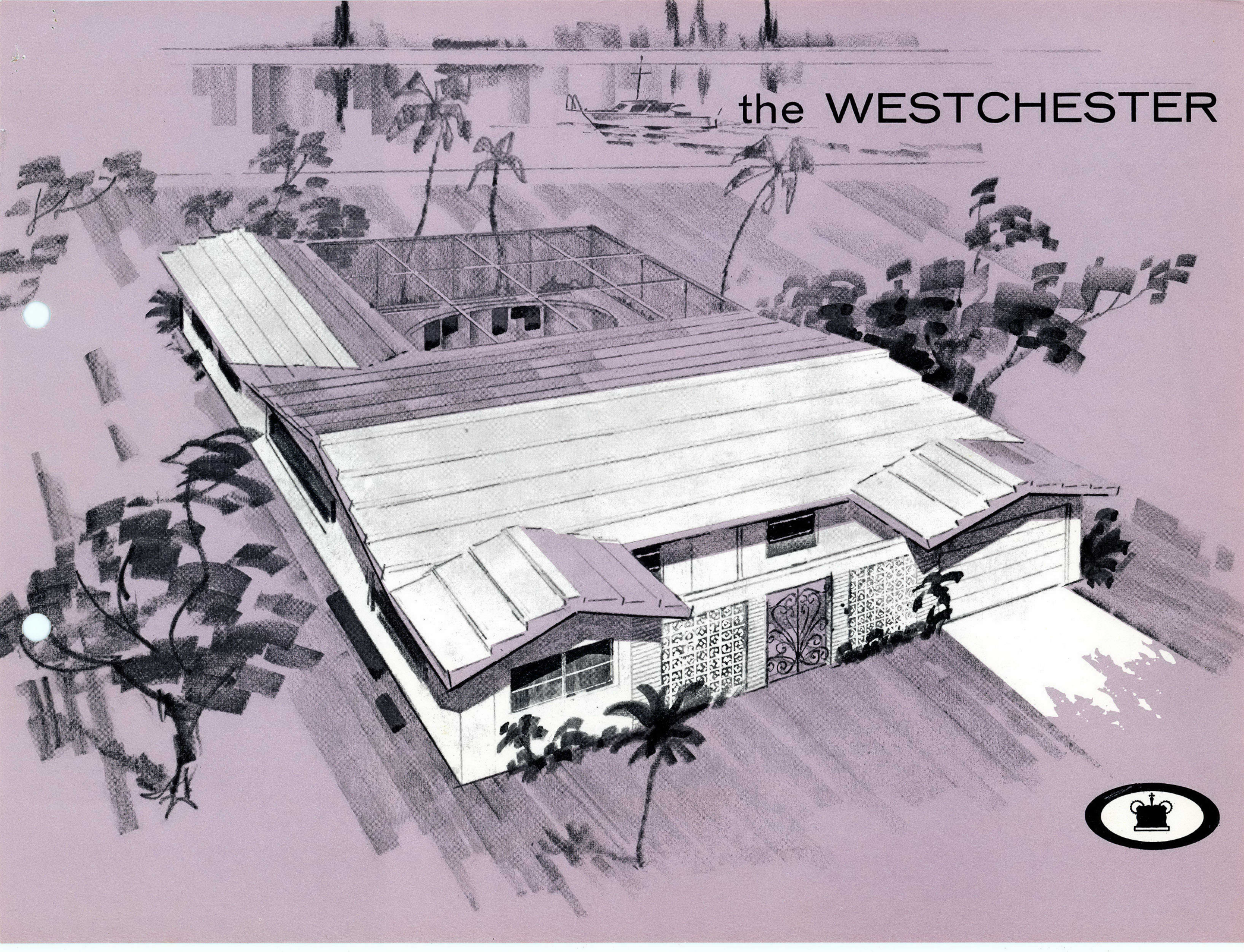
*Wilton Manors National Bank
Broward County Building
Department
Miami Beach Federal Savings
and Loan Association
First Federal Savings and
Loan of Miami
First Federal Savings and
Loan of Pompano Beach*

*First Federal Savings and
Loan of Fort Lauderdale
Oakland Park Building
Department
Chamber of Commerce,
Oakland Park
Florida Power and Light
Company
Coral Ridge National Bank*

Custom Features Found In Every Home

- Westinghouse Central Air Conditioning and Heating
- Every home comfort-conditioned with Fiberglass insulation
- Imported Italian marble baseboard in living and dining areas
- Imported Italian marble window sills
- Diamond dust ceiling in living and dining areas
- Ceramic tile baths as shown in models
- Medicine cabinets with mirror as shown in models
- Custom styled vanities as shown in models
- Deluxe bathroom lighting
- Oval wash basin mounted under mica vanity top
- Custom built kitchen cabinets in a large selection of decorator colors
- Large double kitchen sink
- Westinghouse built-in oven and range
- Louvered closet doors to assure clean, fresh air circulation in all closets
- Durable solid front doors
- Lustrous, lifetime white terrazzo floors
- Custom designed lighting
- Awning windows
- All windows fiber glass screened
- Ample electric outlets
- Silent Westinghouse light switches
- Westinghouse Electric hot water heater
- Electric weatherproof patio outlet
- Electric circuit breaker – no fuses to change
- Built-in outlet for automatic washer
- 220 dryer outlet
- Copper plumbing and chrome-on-brass fixtures
- Two coats interior and exterior of high quality paint in your choice of colors
- Choice of white tiled roof or Riviera Bahama roof
- Large roof overhang in patio areas
- Overhang stuccoed or plastered for durability and all-weather protection
- Screen enclosures framed in lifetime aluminum
- Pre-cast concrete seawall on all waterfront lots
- Fully sodded lots
- Metered City water supply
- City street lights, police and fire protection

the WESTCHESTER



3 bedrooms, 2 baths, garage, family room,

All custom features on page 1 plus:

Centrally air conditioned and heated

Enclosed garage

Beautiful front entrance way

Solarium

Overhead patio lights

Unique kitchen pass-through window to
patio area

Tiled kitchen and patio snack bar

Kitchen hood and fan

Luminous kitchen ceiling lighting

Luminous bath ceiling lighting

Walk-in closet in master bedroom

Master bedroom, living room, kitchen and
dining terrace open onto patio area

Bath opens directly onto patio area

67½' x 100' fully sodded lot

Large dressing vanities in both baths.

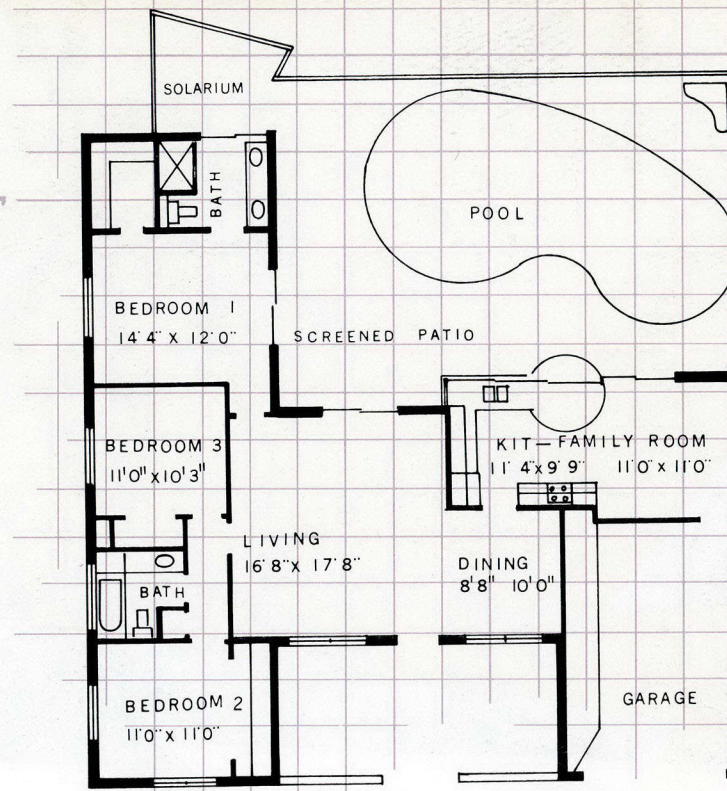
Tile seat in tub bath

His and Hers sink in master bath with
deluxe mirror and vanity

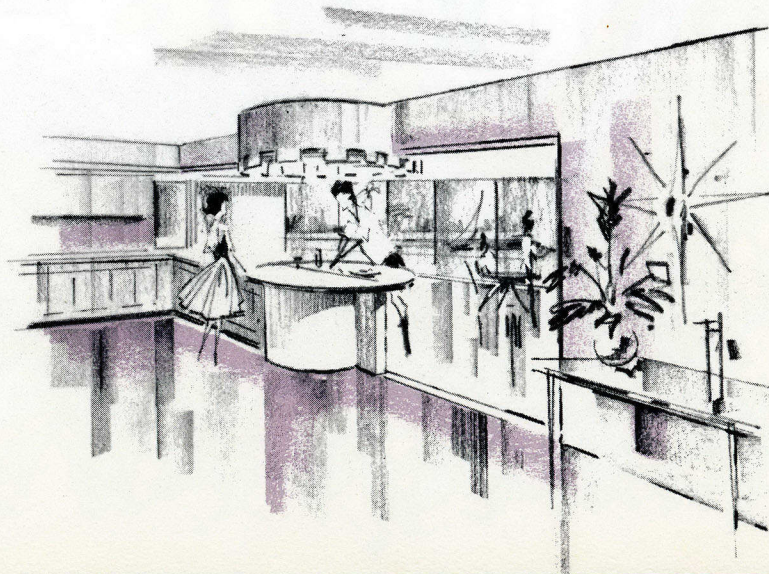
Westinghouse continental range
and oven

Large family room directly off patio area

Optional: Gunite pool, patio and screen-
ing. Pool equipped with steps, filtering
system and underwater light



the WESTCHESTER



A canopied built-in drum table serves both indoors and out in this regal home. The quiet elegance of imported Italian marble window sills and baseboards epitomize elegance in the Westchester.

Royal Palm Isles

the GREENBRIAR



3 bedrooms, 2 baths

All custom features on page 1 plus:

Centrally air conditioned and heated
"L" shaped design allowing most rooms to
open directly onto patio

Kitchen hood and fan

Luminous Kitchen ceiling lighting

Luminous Bath ceiling lighting

Large walk-in closet in master bedroom

Bath opens directly onto patio

Large roof overhang in patio area

Kitchen pass-through to patio area with
recessed doors

Deluxe sunken shower in master bath
with tiled seat

67½' x 100' fully sodded lot

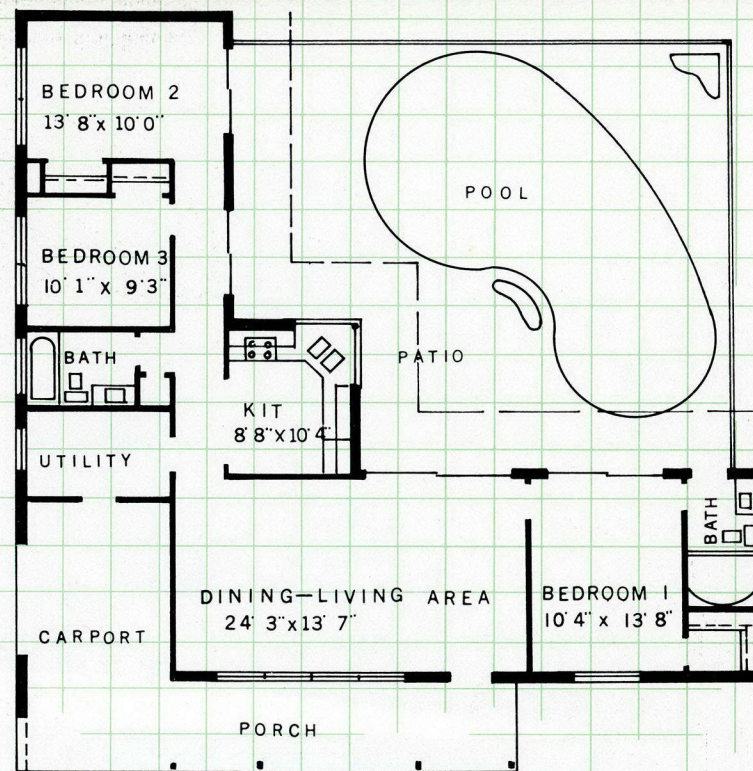
Large front porch

Large spacious living room

Optional: Gunite pool, patio and screening.

Pool is equipped with steps, filtering
system, and underwater light

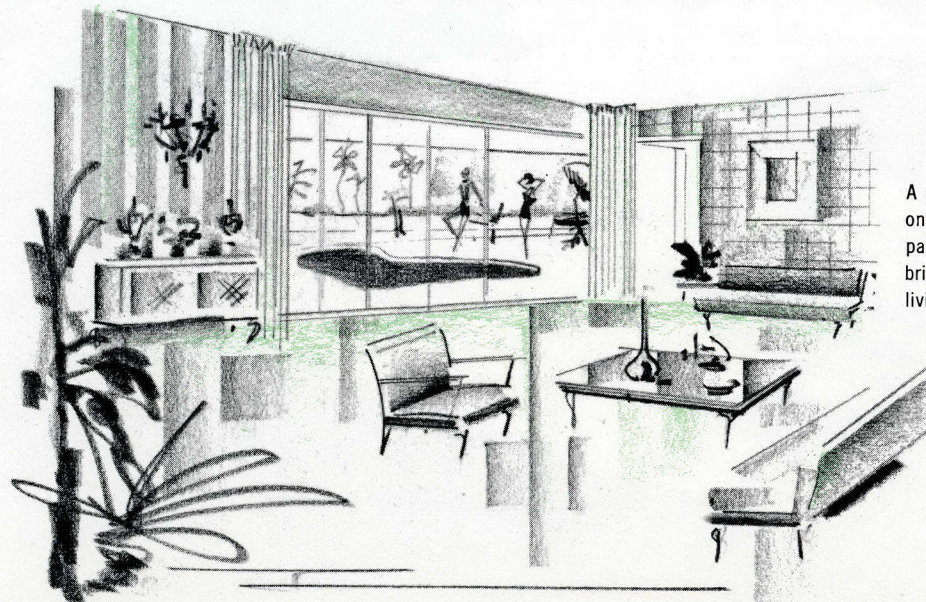
Large dressing vanities in both baths



the GREENBRIAR



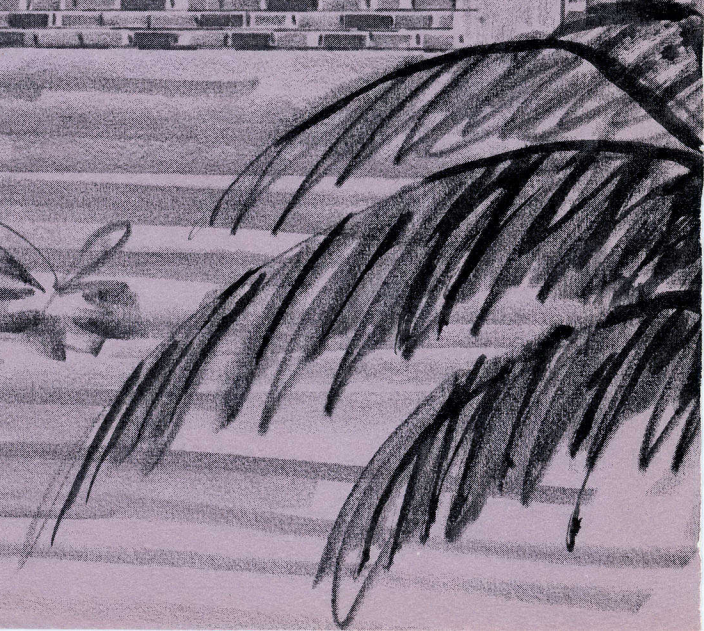
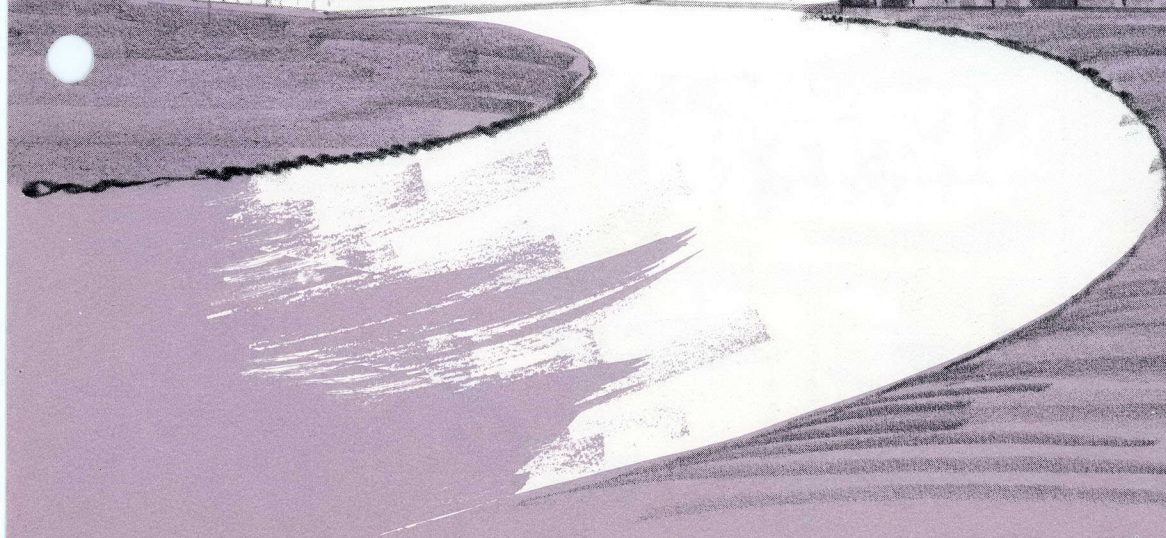
Royal Palm Isles



A spacious living area looks out directly
onto an enormous screened pool and
patio panorama. Sliding glass doors
bring charming outdoor living into your
living room in the Greenbrier.



the CATALINA



3 bedrooms, 2 baths

All custom features on page 1 plus:

Central air conditioned and heated
2 bedrooms, bath, kitchen and dining room
open directly onto pool and patio area

Kitchen hood and fan

Large spacious bedrooms

3 large walk-in closets

Kitchen pass-thru to patio area

Decorative block in carport

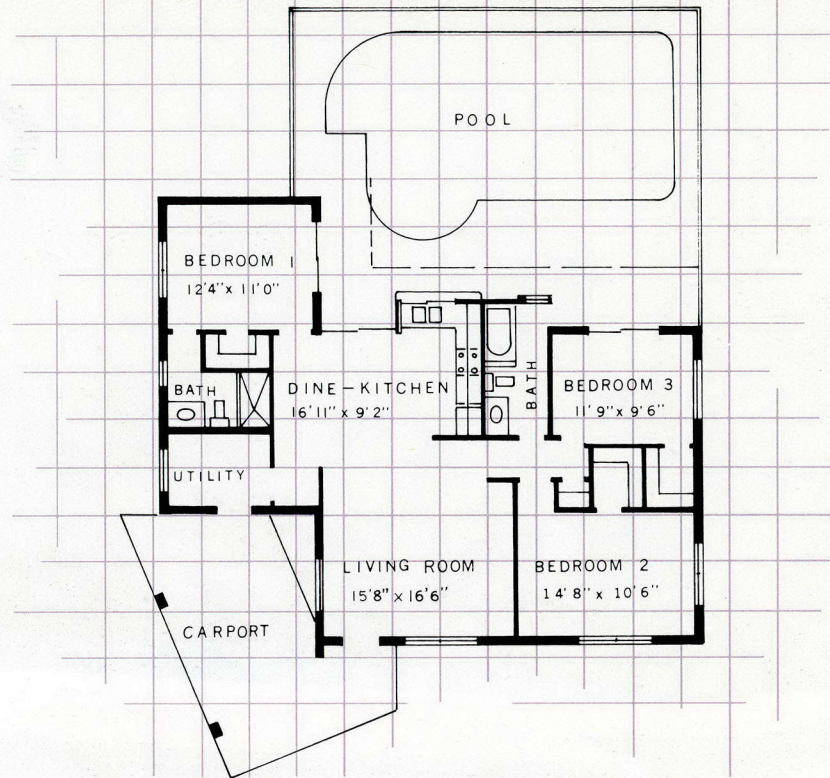
60' x 100' fully sodded lot

Luminous kitchen ceiling and bath lighting

Large dressing vanities in both baths

Decorative planter in bath

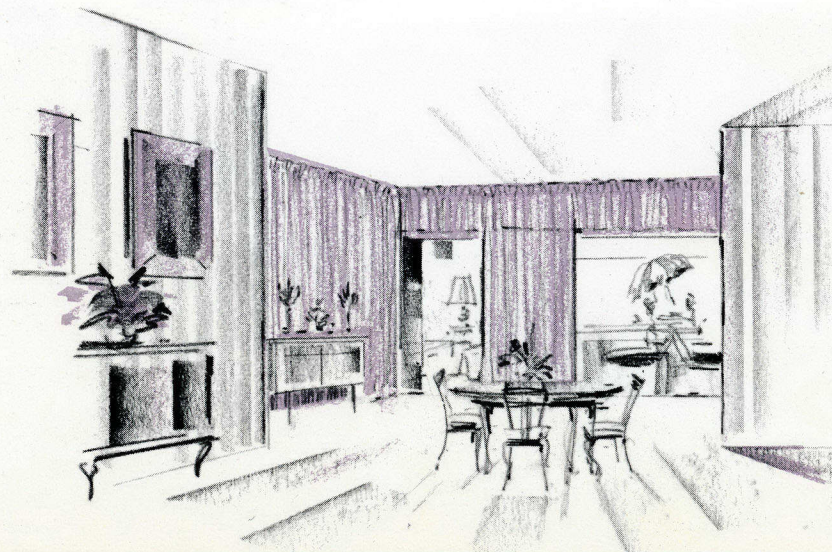
Optional: Gunite pool, patio and screen-
ing, equipped with steps, underwater
light and filtering system



the CATALINA



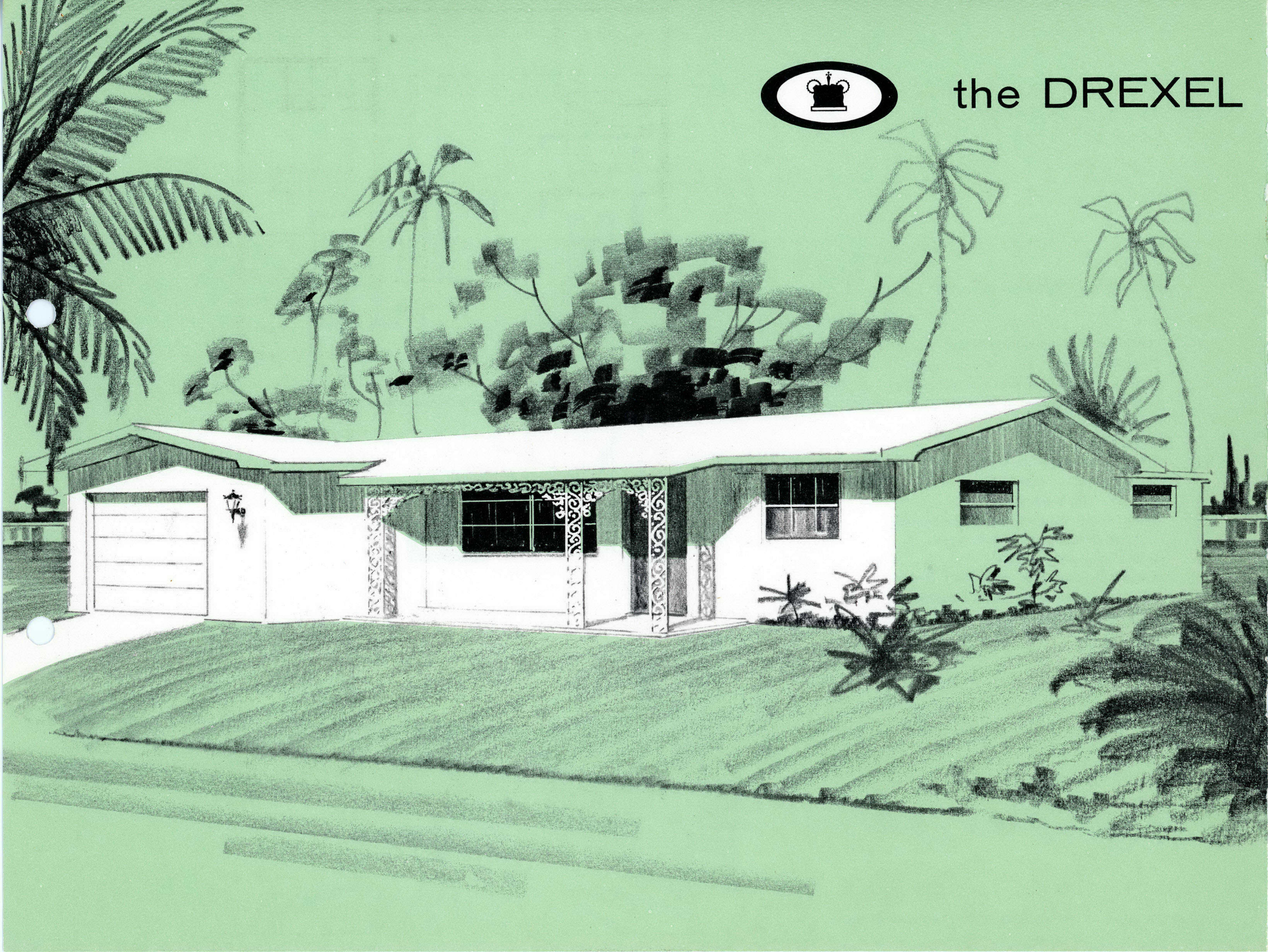
Royal Palm Isles



All the spaciousness of a palace seems built into the Catalina. Dine like royalty while overlooking your own swimming pool and patio.



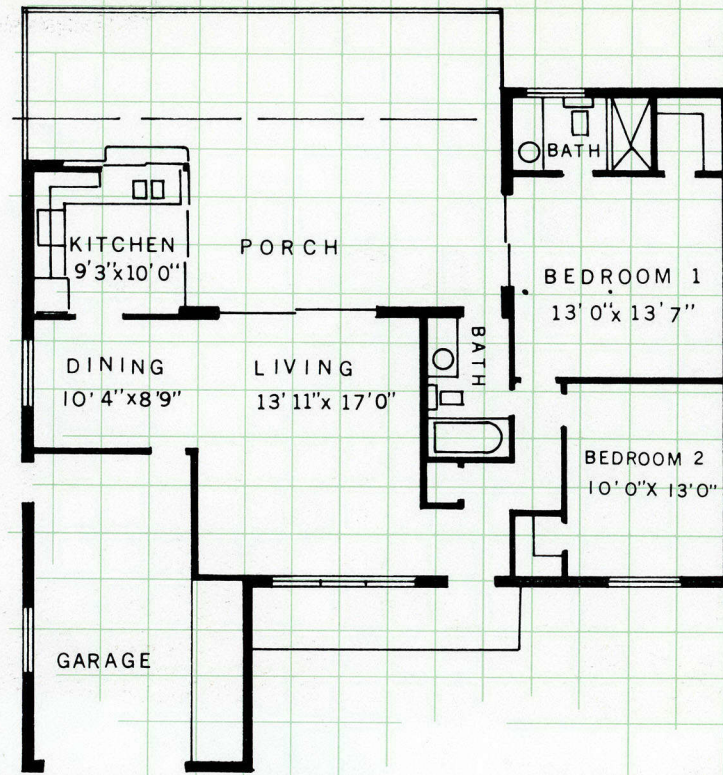
the DREXEL



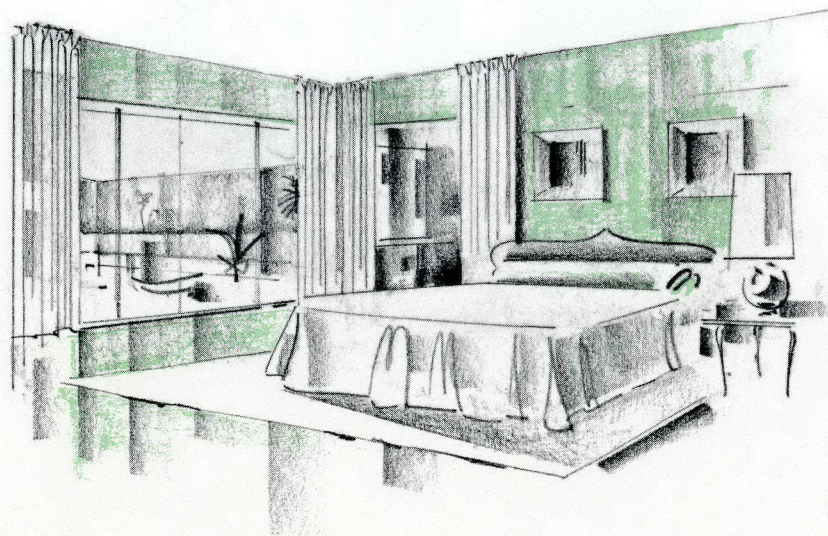
2 bedrooms, 2 baths, screened porch, garage

All custom features on page 1 plus:

- Centrally air conditioned and heated
- Enclosed garage
- Roofed and screened porch
- Unique front entrance way
- Extra large kitchen with dining area
- Kitchen hood and fan
- Extra large bedrooms
- 60' x 100' fully sodded lot
- 2 Large walk-in closets
- Kitchen pass through to patio area
- Covered front porch
- Handy recessed shelf in shower area
- Luminous kitchen ceiling lighting
- Luminous bath ceiling lighting
- Dressing vanities in both baths



the DREXEL

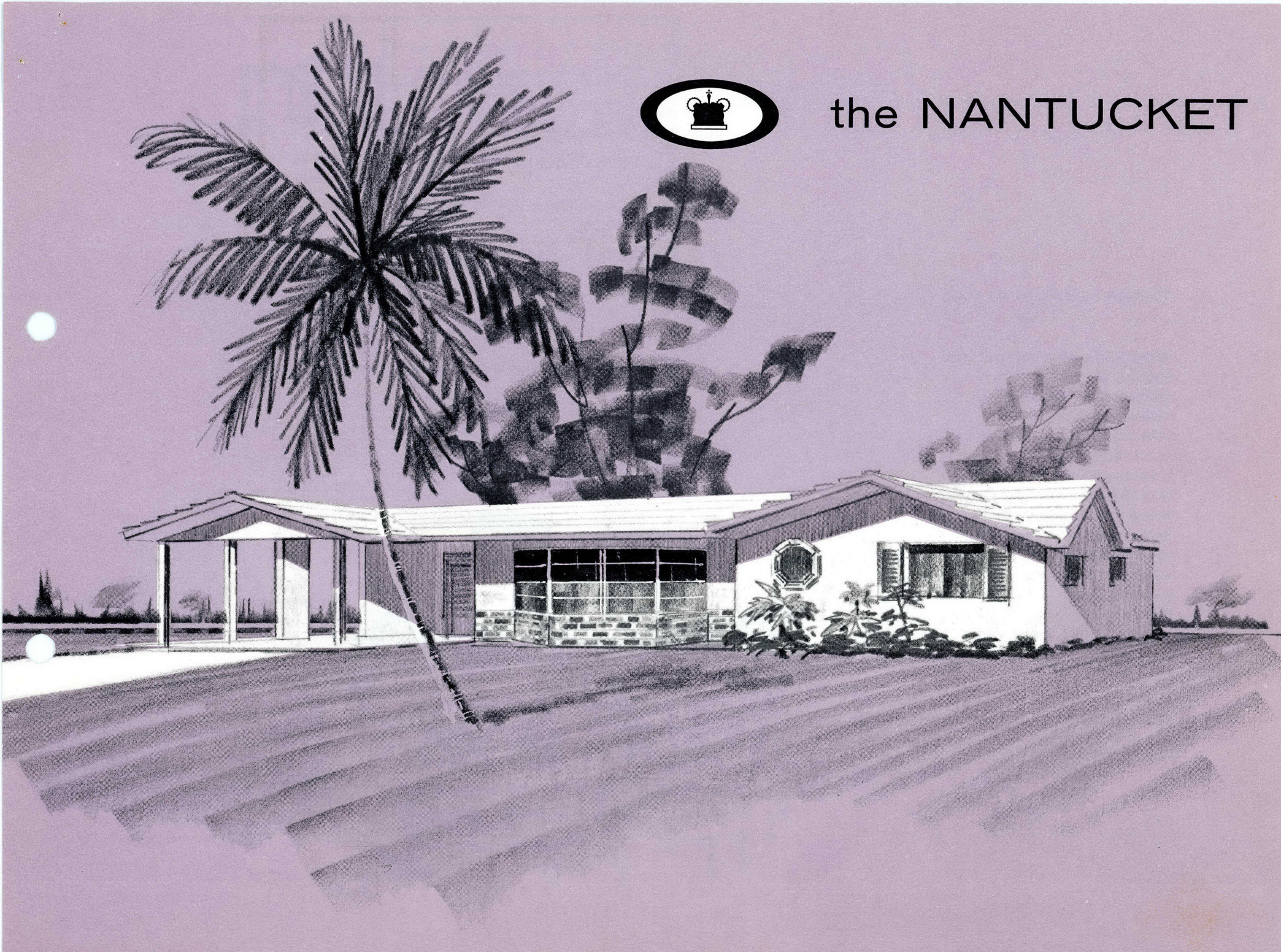


Sliding glass doors separate the master bedroom from a charming screened and roofed porch. And of course you'll enjoy complete climate control with Westinghouse central air conditioning and heating.

Royal Palm Isles



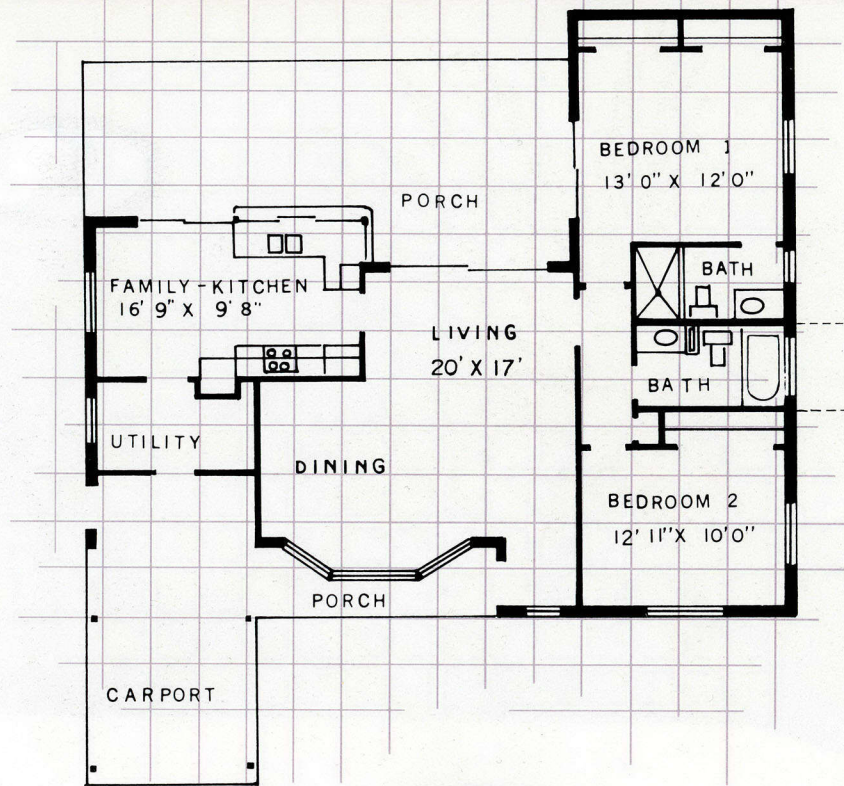
the NANTUCKET



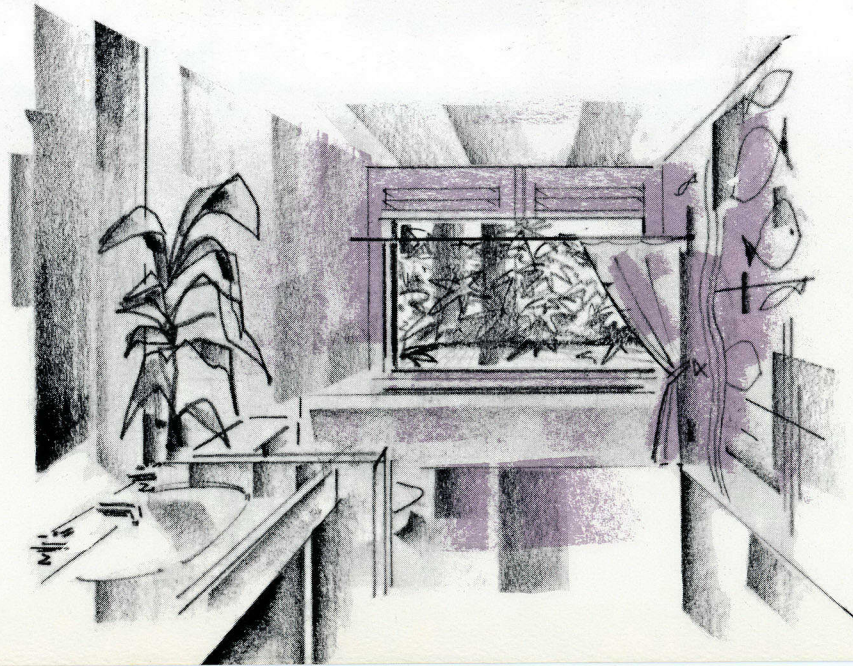
2 bedrooms, 2 baths, screened porch

All custom features on page 1 plus:

- Centrally air conditioned and heater
- Large screened porch
- Kitchen hood and fan
- Unique dining terrace
- Luminous kitchen ceiling lighting
- Luminous bath ceiling lighting
- Kitchen pass-through window to patio area
- Front entrance foyer
- Master bedroom, living room, dining terrace and kitchen open directly onto patio
- Overhead patio lights
- Deluxe built-in oven & Cook top
- Roman marble bath with picturesque planting area
- 60' x 100' fully sodded lot
- Large roofed & screened porch
- Large bay window in dining area
- Decorative planter in bath
- Large dressing vanities in both baths



the NANTUCKET

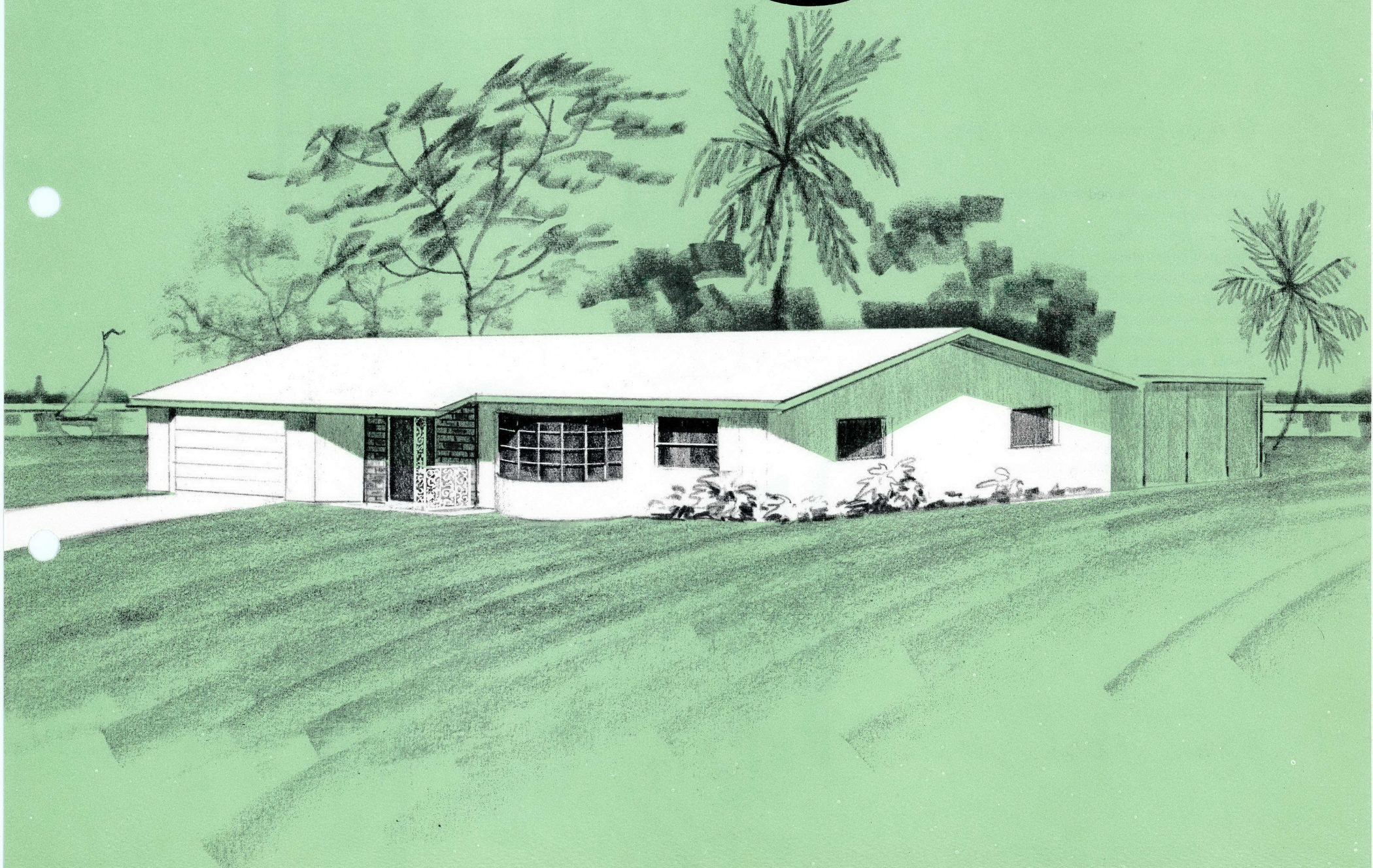


A Roman bath with picture window looks out over your own Garden of Eden in the Nantucket. A large roofed and screened porch spells the graciousness of Florida living.

Royal Palm Isles



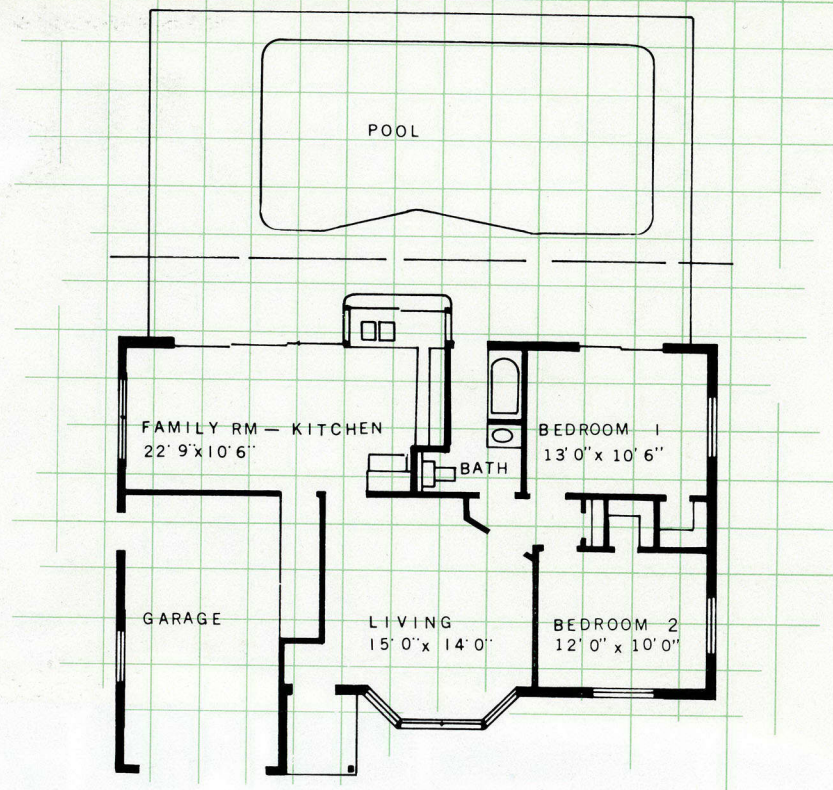
the MONTEREY



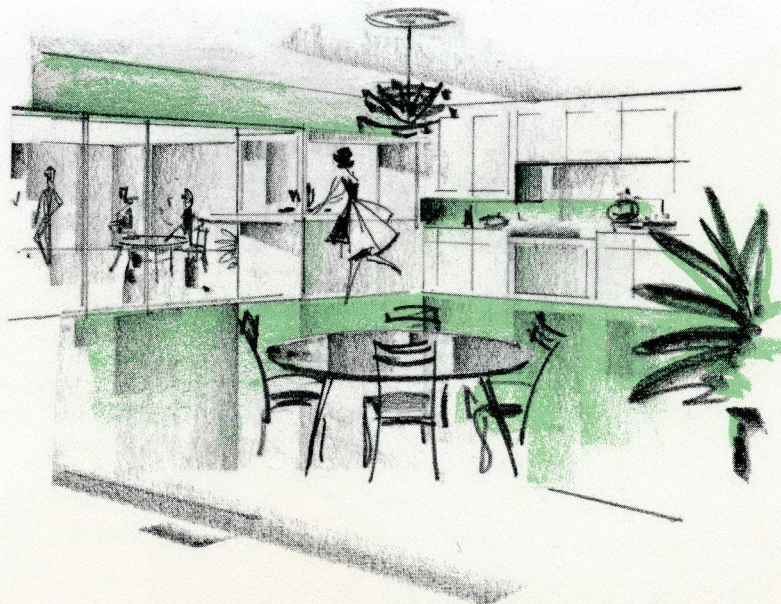
2 bedrooms, bath, family room, garage

All custom features on page 1 plus:

- Centrally air conditioned and heated
- Family room
- Unique bath opening directly onto patio area
- Family room, kitchen and master bedroom open directly onto patio
- Large roof overhang in patio area
- Decorative brick or stone on front entrance way
- Bay window in living room
- 60' x 100' fully sodded lot
- Kitchen hood and fan
- Kitchen pass-through window to patio area
- 2 Large walk-in closets
- Handy recessed shelf in tub area
- Luminous Kitchen ceiling lighting
- Luminous Bath ceiling lighting
- Optional:** Gunite pool, patio and screening.
- Pool equipped with steps, filtering system and underwater light.



the MONTEREY

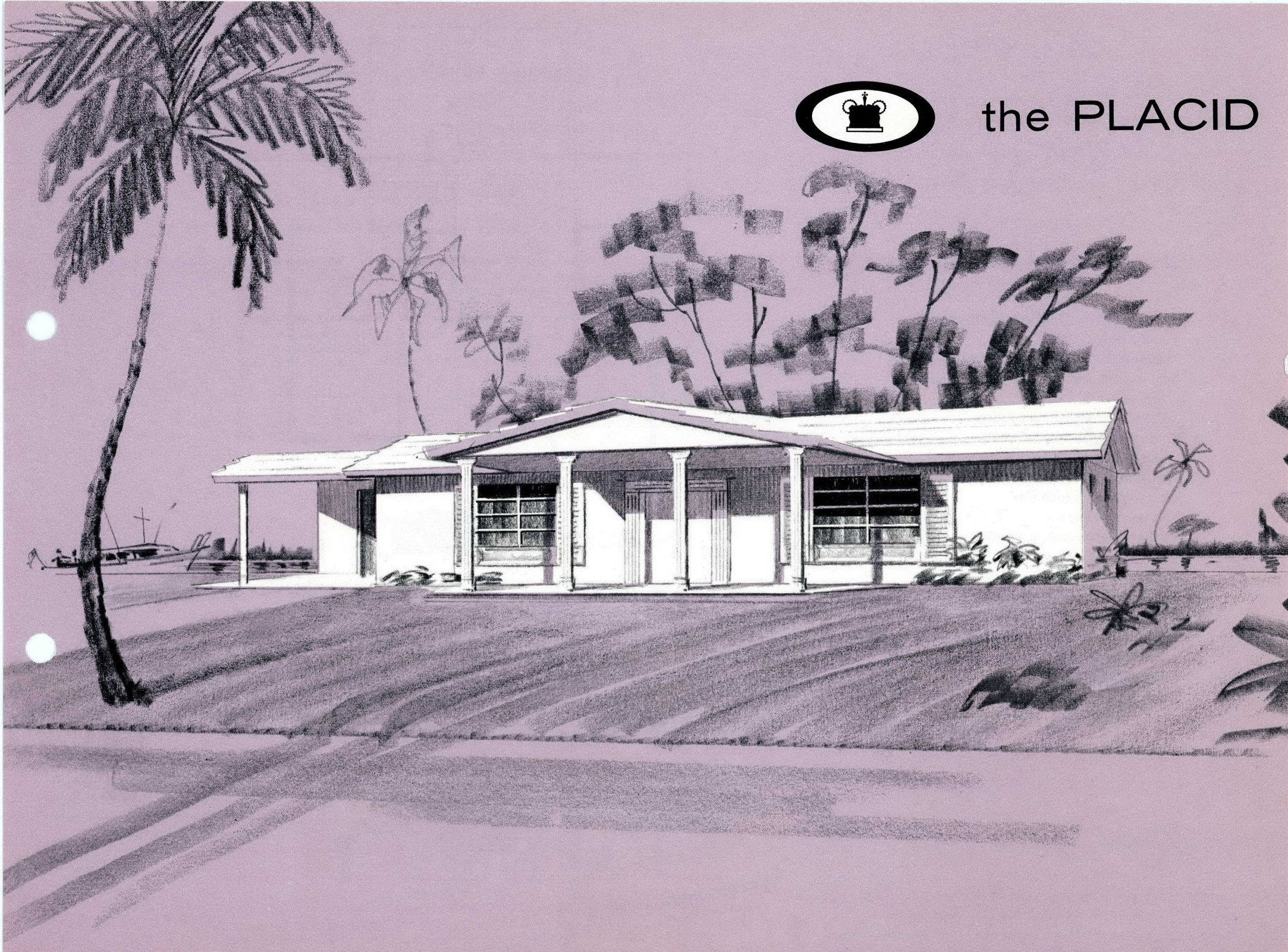


The Monterey offers the luxury of a family room opening onto a pool and patio. Glass sliding doors and serve through windows brings a classic touch of elegance to this fine home.

Royal Palm Isles



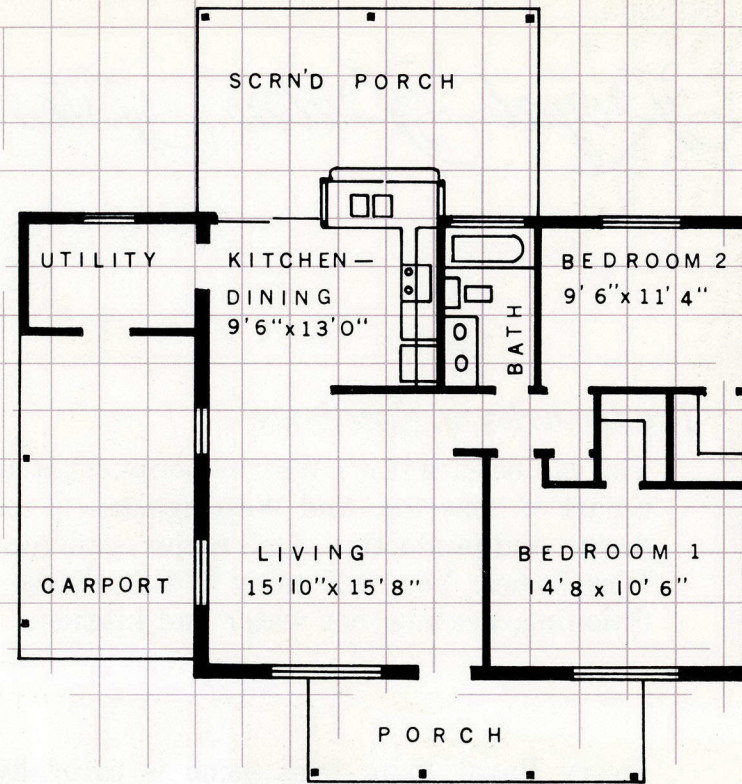
the PLACID



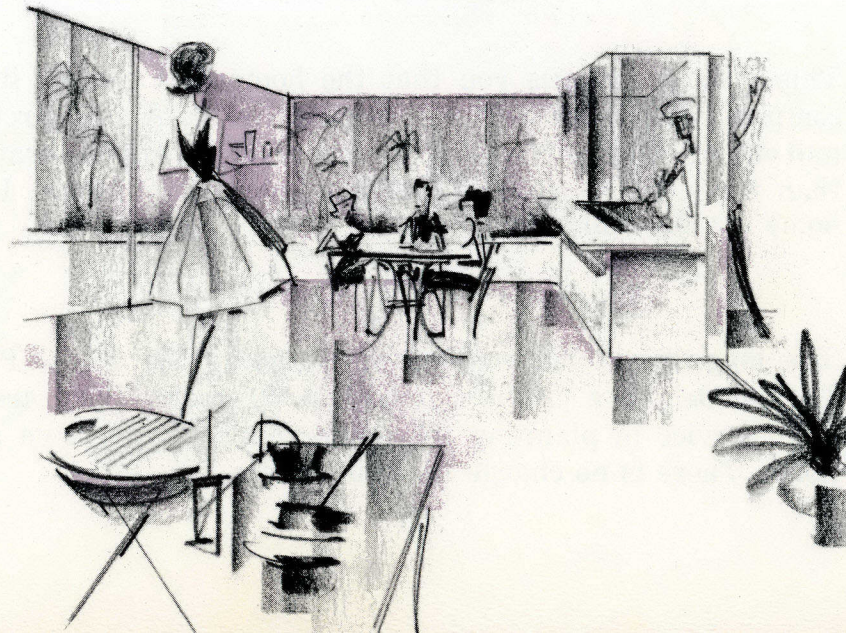
2 bedrooms, bath, screened porch

All custom features on page 1 plus:

- Centrally air conditioned and heated
- Kitchen pass-through window to large roofed porch
- Indirect kitchen ceiling lighting
- Mr. and Mrs. double sink in bath with marbletop
- 2 large walk-in closets
- 60' x 100' fully sodded lot
- Kitchen hood and fan
- Handy recessed shelf in tub area
- Indirect bath lighting
- Large roofed and screened porch
- Large front porch



the PLACID



Immensely practical in design and structure, the Placid accents informality and easy maintenance. A large kitchen — dining area opens via glass sliding doors onto a roofed screened porch.

Royal Palm Isles



Royal Palm Isles

fine custom built homes



You can be sure . . . if it's
Westinghouse

Trademarks of Excellence

You can be sure if it's Westinghouse. That slogan has become a part of America. And Westinghouse is responsible for the design and production of all major appliances in Royal Palm Isles homes. You will enjoy Westinghouse central air conditioning, heating, hot water and kitchen.

OWENS-CORNING

Every Royal Palm Isles home is carefully insulated with Owens Corning materials. In addition all screening of window and patio areas are fiberglass — supplied by Owens Corning.

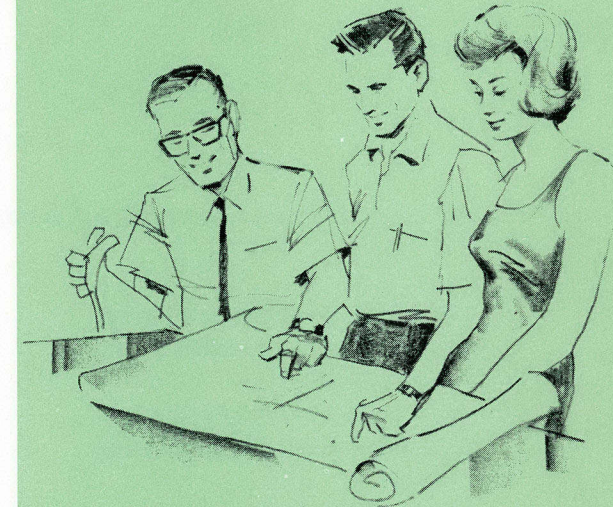


Live Better Electrically

This emblem assures you that the home that carries it, is completely equipped for total electric living. Ample circuits and outlets must be provided. Circuit breakers are used rather than fuses. At no extra cost to you, every Royal Palm Isles home is a Medallion Home.

**GRIFFIN BROS.
CO., INC.**

The magnificent landscaping surrounding the Royal Palm Isles models is a product of Griffin Brothers. They are at your service in planning the landscaping of your own new home. There is no charge for this service.



PERSONALLY YOURS

At no cost to you, you are invited to make full use of the Royal Palm Isles architectural design staff. They are at your service to help and guide in any personal touches or design changes you may desire in the home you select. In addition, you choose your individual color scheme from a wide selection of decorator colors for interior and exterior paints, ceramic tile, bathroom fixtures, vanity tops, kitchen cabinets, counter tops, Westinghouse kitchen appliances, and Briggs bathroom fixtures.

fine custom built homes

Royal Palm Isles



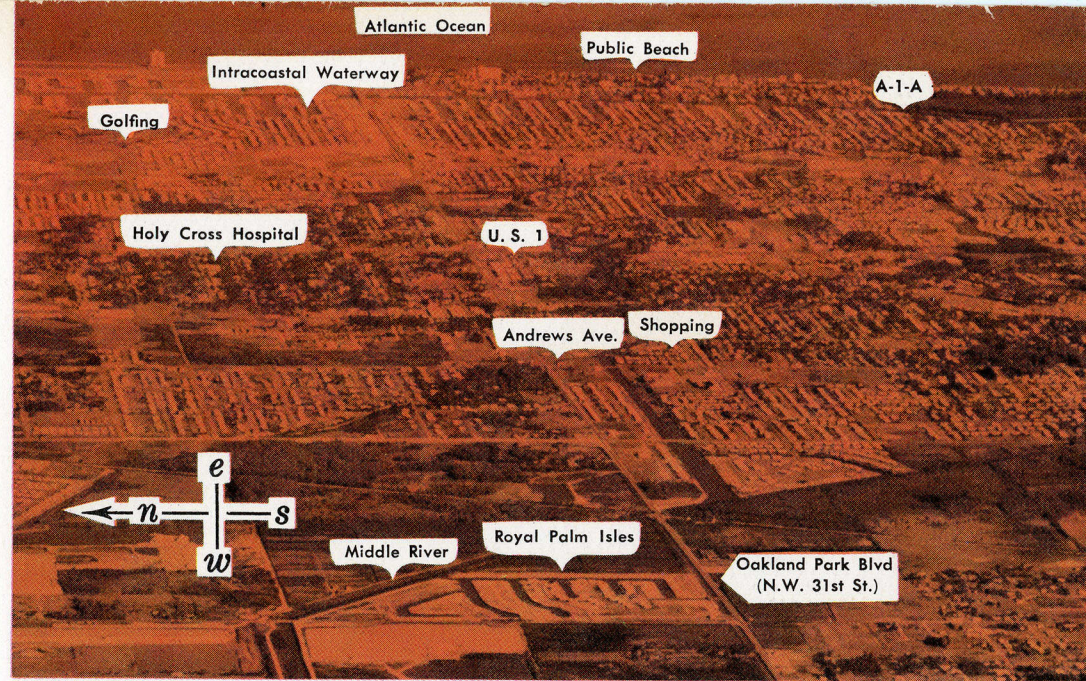
Boating — Right in your own backyard



Golf — For the golfer — championship golf courses



Shopping — Minutes to South Florida's finest



Royal Palm Isles is ideally situated in the heart of Fort Lauderdale's growing residential area. Within minutes of shopping centers, schools, churches and recreational facilities.



Beach — Fort Lauderdale's beaches are only minutes away

Oakland Park Boulevard
(Ocean Blvd. on N.W. 31st
St.) and N.W. 18th Avenue.
Telephone LU 1-6410.

LITHOGRAPHY: GENERAL PRINTING CORPORATION
FORT LAUDERDALE, FLA.

DESIGNED: VERNON BOWITZ
FORT LAUDERDALE, FLA.