

FLORIDA MASTER SITE FILE
Site Inventory Form

FDAHRM 802 ==
1009 ==

Site Name _____ Site No. 830 == Survey Date 8506 820 ==
Address of Site: 145 NE 94th St., Miami Shores, Fl 33138 905 ==
Instruction for locating on S side of NE 94 St. between NE 1 Ave. &
NE 2 Ave. 813 ==
Location: Miami Shores Sec 1 Amd. 21 20 & 21 868 ==
subdivision name block no. lot no.
County: Dade 808 ==
Owner of Site: Name: Johnson, William ;
Address: 145 NE 94th St., Miami Shores, Fl 33138 ;
902 ==
Type of Ownership private , 848 == Recording Date _____ 832 ==
Recorder:
Name & Title: Newton, Margot, Chairman, & Stofik, Marty ;
Address: MSHPR ;
818 ==

Condition of Site: Integrity of Site: Original Use private resid. 838 ==
Check One Check One or More
 Excellent 863 == Altered . 858 == Present Use private resid 850 ==
 Good 863 == Unaltered 858 == Dates: Beginning 1928 844 ==
 Fair 863 == Original Site 858 == Culture/Phase American 840 ==
 Deteriorated 863 == Restored() (Date: X) 858 == Period 20th Century 845 ==
 Moved() (Date: X) 858 ==

NR Classification Category: Building 916 ==

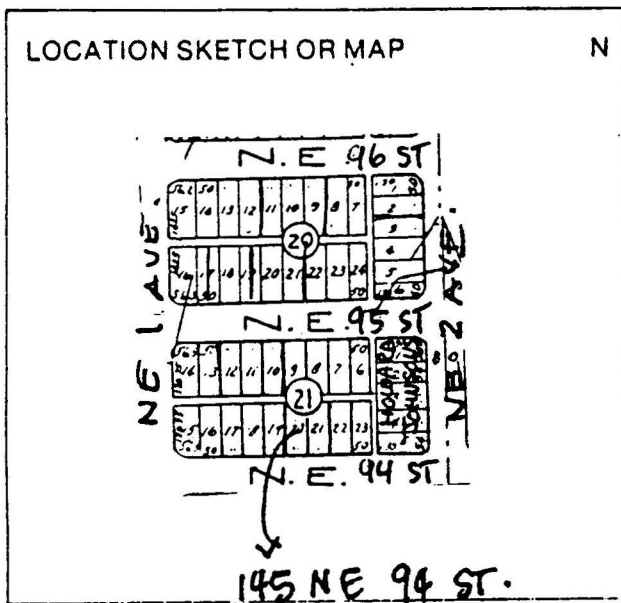
Threats to Site: none
Check One or More
 Zoning(X) 878 == Transportation(X) 878 ==
 Development(X) 878 == Fill(X) 878 ==
 Deterioration(X) 878 == Dredge(X) 878 ==
 Borrowing(X) 878 ==
 Other (See Remarks Below): _____ 878 ==

Areas of Significance: Architecture 910 ==

Significance:
Structure was built as part of the second phase of development of Miami Shores by the New Miami Shores Company in the late 1920s. The architect, Marion Manley, was the first registered woman architect in Dade County and designed a number of significant Miami Shores residences. Noteworthy features include cast stone quoins surrounding entry door, masonry balcony above entrance, and the use of elongated arch windows. The structure is in scale and character with the surrounding neighborhood. It is built of hollow clay tile, one of the few structures built in the Miami Shores development from that material.

911 ==

ARCHITECT Manley, Marion (Miami, Fl) 872 ==
 BUILDER --- 874 ==
 STYLE AND/OR PERIOD Mediterranean Revival 964 ==
 PLAN TYPE irregular;irregular 966 ==
 EXTERIOR FABRIC(S) rough textured stucco 854 ==
 STRUCTURAL SYSTEM(S) hollow tile 856 ==
 PORCHES none 942 ==
 FOUNDATION: concrete block 942 ==
 ROOF TYPE: hip 942 ==
 SECONDARY ROOF STRUCTURE(S):rear projection, flat, tar&gravel 942 ==
 CHIMNEY LOCATION: central,ridge;W interior, rear slope 942 ==
 WINDOW TYPE: jalousie & alum. awning 942 ==
 CHIMNEY: CBS 882 ==
 ROOF SURFACING: barrel tile 882 ==
 ORNAMENT EXTERIOR: masonry, cast stone 882 ==
 NO. OF CHIMNEYS 2 952 == NO. OF STORIES 2 950 ==
 NO. OF DORMERS none 954 ==
 Map Reference (incl. scale & date) Miami Shores Village Plat 1980 809 ==
 Latitude and Longitude: " " " " " " 800 ==
 Site Size (Approx. Acreage of Property): LT1 833 ==



Township	Range	Section
53S	41E	1

UTM Coordinates:

Zone Easting Northing

Photographic Records Numbers 85N105HG40/85N105HG41 860 ==

Contact Print



CONTINUATION SHEET

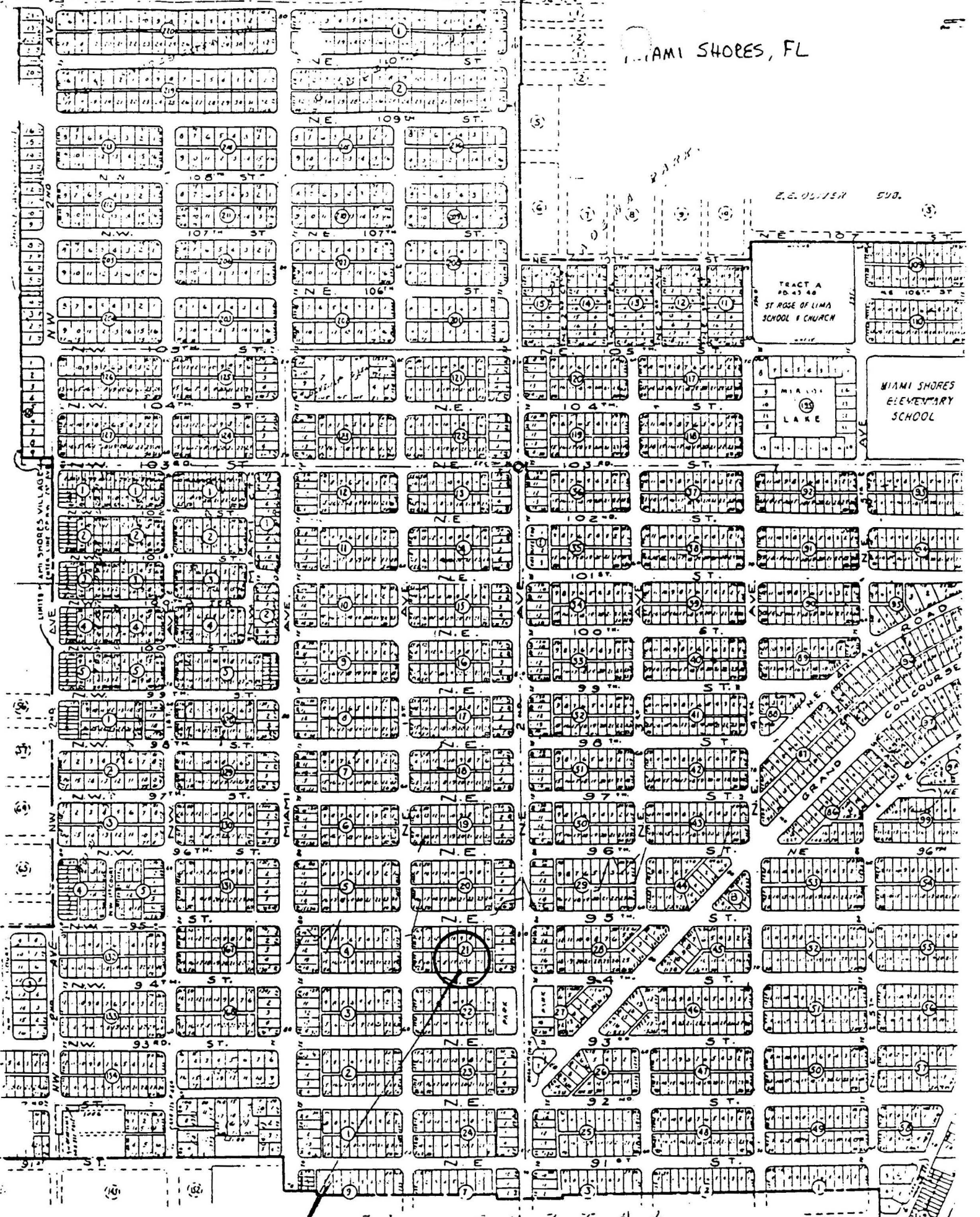
Physical Description:

Structure is a two-story Mediterranean Revival residence. Entry door has cast masonry quoins. Above the entry is a masonry balcony with fixed plate window. Elongated arched windows on E have fixed plate transoms. String course-2nd story window level. Detached garage and maid's quarters in rear (N) are of similar style and construction.

MSHPB USE ONLY

Roof over existing sundeck 1965
Opening over masonry balcony originally French doors

MIAMI SHORES, FL



145 NE 94 ST.

East Coast Lumber & Supply Co.

"EVERYTHING TO BUILD YOUR HOUSE"
"EVERYTHING TO SHIP YOUR CROP"

Phone 3274

Cor. N. W. 1st Ave. and 5th St.

WHITE POPULATION (1925)

555

Godard Danl V (Helen) sec-treas Freedlund Constr & Supply Co
h258 NE 26th st
Goddard Euphemia M (wid W H) r345 NE 2d av
Goddard Lucy (wid Wm) r427 SW 3d st
Godman John D (Mattie E) h42 NW 2d av
Godson Maria (wid Richd) r126 SW 7th av
Godson Pauline dry gds 322 NE 1st st r do
Godwin David M (Lula) cond F E C h123 NW 34th st
Godwin Doyle (Ruth) driver h120 NW 34th st
Godwin Frank (Mazie) h4, 219 SW 9th av
Goebel Elbert V (Minnie) chf route clk Miami E L & Pow Co
h1729 NE 1st ct
Goebel Wm pntr r1729 NE 1st ct
Goethe Reuben (Olivia) eng h202 NE 26th st
Goetling Chas (Helen) butcher h329 SW 4th st
Goettke Loretta clk Parisian Cleaning & Dyeing Co r604 Plaza
Augustine Coral Gables
Goetz Harley E (Florence; Ta-Miami D C Co) h816 SW 8th st
Goetz Lavon C Mrs office mgr Burdine & Barco r395 Avenida
Pizarro Coral Gables
Goetz Maurice G (Hilda) h Pizarro st Coral Gables
Goff John roofer r1453 NE 1st ct
Goff Nellie Mrs h ns NW 40th st 1 e of 17th av
Goforth Chas L (Ethel) electn h717 S Miami av
Goforth Clyde (Willie) carp h es SW 27th av 3 s of Benson rd
Goforth Preston (Mary) r1705 SW 3d av
Gogan Alice M Mrs (Smith & Gogan) res Miami Beach
Gogas Chas T (Palms Cafe) r302 S Miami av
Goggin John W (Margt M; Goggin & Pinkston) h520 NW 20th av
Goggin & Pinkston (J W Goggin, E C Pinkston) real est 219
Republic bldg
Going Claude r22 NE 10th st
Going Jas pntr r22 NE 10th st
Going Milton W (Marian) carp h ss NW 19th st nr 17th av
Going Relaford pntr r22 NE 10th st
Goings C Milton truck driver r1204 NE 1st av
Goings John R pntr r1204 NE 1st av
Goings Jos C (Lula) carp h1204 NE 1st av
Goings Wm J pntr r1204 NE 1st av
Gold A brklyr r642 NW 5th av
Goldberg Building 143 NE 1st st
Goldberg Jacob (Eva; Colonial Antique Shop) h334 W Flagler st
Goldbrown Jacob veterinarian 478 SW 8th st h do
Golde Robt (Rosalie) sculptor h776 SW 5th st
**GOLDEN BEACH CORPORATION, H G Ralston Pres, Charles M
VanTassell V-Pres, R W Ralston Sec-Treas 235 E Flagler
st, Phone 5640**
Golden Edgar clk r6. 161 NE 2d st
Golden Jos N mgr Julius Pearlman r161 NE 2d st
Golden J A pntr Cement Post Co r71 NE 8th st
Golden Ray lather r A W Mickle
Goldenblank Max (Clara) dry gds 209 N Miami av h219 NW 4th st
Goldenblank Philip (Lillian) mgr Morris Rubin 353 NW 4th st
Goldfarb Saml (Sophie) slsmn Northern Development Co hG,
121 NE 5th st
Goldman Abr S (Jane) sls mgr Hudson-Essex Sales Co h1, 410
SW 10th av
Goldman Archie F (Edna) marine eng h284 NE 15th ter

The CAMERON & BARKLEY Co.

MILL, DREDGING AND PLUMBING SUPPLIES
CAREY'S ROOFING

129 N. W. Fifth St.

Try Us for Service

Phones: 3166-3167

Merchants Realty Corp.

REALTORS

Developers
of

U-Le-Lah
Bonita Park
South Bay
Estates

111

N. E. 1st Av.
Phone 6525

W. T.

FARLEY

Men's
and
Women's
Ready-
to-Wear

Open a
Charge
Account

330-332
N. Miami Av.
Phone 4839



C. F. Mulkey

REAL ESTATE
—
Insurance Loans

201-2-3-4
Realty Board Bldg.
PHONE CONNECTION

F. L. Terry Mortgage Co.

8% First Mortgage Loans

PHONE 3655
514-16-18 SEYBOLD BLDG.

Thomas Awning & Tent Co., Inc.

Manufacturers of Awnings, Tents, Sails, Tarpaulins,
267 W. FLAGLER ST. Water-Proof Covers
FACTORY, 184 N. E. 27th ST.

PHONES
7428-7429

644

(1926) POLK'S MIAMI DIRECTORY

Insurance That Insures

Dupree & Humphreys

INC.

Intelligent Service

GOBIE

Gobie Neal real est r249 NE 20th st
" P H real est h249 NE 20th st
Godard Aretas A (Eva V; Godard & Hyzer) h Bayview rd "Casa Kanza" Coconut Grove
" David V (Helen) pres Godard & Sydow sec-treas Freedlund Supply Co h258 NE 26th st

GODARD & HYZER (A A Godard, Leonard Hyzer), Attorneys-at-Law 524 Meyer-Kiser Bank Bldg

" & Sydow Inc D V Godard pres J A Sydow v-pres M Kunz sec-treas genl contrs 204-5 Jefferson bldg
Godbold C B hlpr r311 NW 28th st
" Harold driver r265 SW 2d st
" Thos W teller Bank of Bay Biscayne r Y M C A

Goddard D R sec-treas Lummus & Young Inc and Miami South Atlantic Investment Co r Miami Beach
" John W br mgr Twin Cities Service Sta r Park View Apts
" Lucille T Mrs bkpr J E Withers Transf & Stge Co r443 Ave Aragon Coconut Grove

" Ralph carp r330 NW 4th st
" Ross hl, 220 NE 26th ter
" Ross M (Susie M) gro 2316 NE 2d av h do
" Roy ironwkr r137 NE 25th st
" Teighman R mech Franklin Miami Co r sw cor NW 68th st and 12th av

Godeau Sylvester carp r315 NW 22d la
Godfrey Alice W sten Jesse Macbeth r515 NW 47th st

GODING IRA (Ray Blick and Associates), 46 NW 1st st, Rms 9-10

" Percy J (Bertha A) steward h Ralston parkway Silver Bluff
Godman L L (Lydia) r Hotel Santa Fe
Godson M Mrs r126 SW 7th av
Godwin Alvin roofer Louis Moore r217 NW 20th st

" Annie L (wid Wm F) r1520 NW 8th st
" Archie B slsmn J L Shull & Sons Furn Co r809 N Miami av
" Arnold r317 NW 38th st
" Bradley clk r809 N Miami av
" David M (Lula) emp F E C h128 NW 34th st
" Doyle (Lillian R) asst supt h rear 252 NW 45th st

GODWIN

" Gladys E h3, 25 SE 7th st
" Grover (Godwin Realty Co) rA1, 269 NE 33d st

GODWIN REALTY CO (Grover Godwin, E L Jarrett), Real Estate Brokers, Building Contractors 509 Exchange Building

" Robt L (Odell) driver h N Miami av and 73d st Little River
" R H W (Mattie) hA1, 269 NE 33d st

" Wallace r44 NW 25th st
" Wm A (Eloise) roofer Louis Moore r 2874 SW 18th st

" Wm F (Mazie W) slsmn Croissant Park hB, 152 NW 3d st
" Wm I (Edna L) mech City Garage h rear 252 NW 45th st

Goebel Albert V (Minnie) r207 NW 53d st

" Frank slsmn Croissant Park r Hotel Oxford

" Wm pntr r207 NW 53d st

Goehring A M slsmn Johnson & Moffatt 30 NE 1st av

GOENNER WM F (Sarah Jane), Sec-Treas Miami Photo Engraving Co, h8 Virginia Apts

Goepel Alex F slsmn Godwin Realty Co hB1, 269 NE 33d st

Goes Fred supt h Indiana and Douglas rd

Goethe Chas H student r2913 NE 3d av

" Robt (Olivia) eng F E C h2913 NE 3d av

" Ruben (Olivia) eng h2913 NE 3d av

Goetling Chas clk O J Tanner & Co r 1753 NE 2d av

Goettche Christopher (Metta) clk h2220 NW 4th st

Goety Carl H clk Villa D'Este Hotel r do

Goetz Etta M r A J Commins

" Harry (O G Sandwich Shop) Villa D'Este Hotel

" Mildred R sten The Florida Society of America 228 NE 31st st

" Paul H clk Villa D'Este Hotel r do

Goff Edw hlpr Robbins Roofing Wks r 1453 NE 1st ct

" F E pntr r144½ NE 11th ter
" John roofer Robbins Roofing Wks r 1453 NE 1st ct

Aber-Wolkowsky, Inc.
REALTORS

32 N. E. 1st Ave. Phone 8646

PHILLIPS HARDWARE CO.

301 N. MIAMI AVENUE

"TRY US FIRST"



Builders and Marine Hardware

P
RE
12 Halcyon

GOFF

" Nellie E Mrs
" 1 e of NW
Goffe Hugh (L
r2000 NW
Gofort Frank
av

" Preston (Me
Goforth Chas
456 W Fla
" Clegg lab r6

Gogan Alice
Service R
Beach

GOGAN CONS
Gogan Pro
Home Buil
8731

" Donald C (A
Co res Mi
Gogas Chas
Miami av

Goggin John
Pinkston)
" & Pinkston
ston) real

Gogliardi Mad
r Y W C
Gohman Beat
Goin Korah E
Going Milton

19th st I
" Wm J (Elh
st

Goins Edw A
Fruit &
Fla

" J Thos (B
Light Co
Golatis Andre
NW 14th

Gold Boss M
Shops Inc
" Court Apar
" Louis pres
r158 NE

" Martha ass
" Morris abs
Land Co

Goldbaugh Fr
r Valenci
Goldberg Abr
" Apartments
" A R slsmn
NW 1st s

" Geo (Flori
1450 NW

JULI

STORAGE
STE
51 S. E. 3r

E

OFFICE AN

Co-Operating Sales Association

HANDLE EVERYTHING IN REAL ESTATE
PROPERTY LISTED WITH ONE IS RE-LISTED WITH ALL

MIAMI REALTY BOARD BUILDING

PHONE 8824

GLASTON & FRANK, Inc.

125
S. W. 12th St.

Phones
6127-6128

THE TILER-CLEVELAND CO.

Bedford Bldg., Phone 23486
First Mortgage Investments

526

(1927) POLK'S MIAMI DIRECTORY

GLENN

" Wm A (Maidie; Southern Auto Brake Service) h29 NE 50th st
" Wm E (Demaris) carp h21 NW 27th
" Wm J mech r578 NW 82d st
Glennon Lester C slsmn Natl Cash Register Co
GLENS FALLS INSURANCE CO OF GLENS FALLS, N Y, 0 E Hainlin
Agt, 3d fl Security Bldg, NE 1st av
Glessner Eliz r3577 Indiana st
" Maxfield slsmn Miami Cadillac Co h 2177 SW 12th st
" Michl brklyr h3577 Indiana st
" Ruth Mrs waitress h314 NW 2d av
" Wm r3577 Indiana st
Gleyre Mae (wid Aug) r2615 Stuart ter
Glick Harriette W Mrs asst Drs Jones & Vogt r311 NE 20th st
" Jos C (Jessie) eng h55 NE 12th st
" Ralph R (Harriette W) law clk Snedigar Miller McKay & Baya h 311 NE 20th st
" Saml (Annie) mgr Blue Ribbon Market h1529 NW 52d st
" Theo chauf r2913 SW 24th st
" Wm (Sarah) h1136 NW 31st st
Glickman Saml news dlr r104 SW South River dr
" Sarah Mrs h1207 W Flagler st apt 2
Glidden Allen D (Isabelle) plmbr h543 NW 34th st apt 4

GLIDDEN PAINTS AND VARNISHES, Florida Paint Co Distributors, 150 SW 1st st, Phone 4955

Glimpse Edw (Bertha) lab h NW 54th st and 25th av
" Roscoe lab rNW 54th st and 25th av
Glisson Alvin driver r829 NW 7th av
" Ellis W (Nellie) police h654 NW 31st
" Geo R driver r654 NW 31st st
" J D ptrnr Welbom C Phillips Inc
" Jas H (Hattie T) h3156 Seminole st
" Jas R (Inez) lieut Fire Dept Sta No 8 h3156 Seminole st
" Roma L (Nora V) police h187 NW 27th st
" Wm N (Olive) clk Police Dept h59 NW 28th st
Globe Apartments 1313 N Miami av
" Indemnity Co R M Wilson mgr and spec agt 1015 First Natl Bank bldg
GLOBE INDEMNITY CO OF NEWARK, N J, Stembler Insurance Agency Inc Agts, 10th fl First Natl Bank Bldg
" Restaurant (Gus Pantazis, Steven Canellos) 112 S Miami av
" Tailors (Morris and Leo Stein) 220 NE 2d av
Globish Jos (Antoinette) ptrnr h21 NW 7th st
Glock Amelia A (wid Alf) r1268 NW 3d st
Gloer Saml W (Ann) slsmn The Grocers' Supply Co h5601 NW 11th th

GLOS

Glos Leon M (Alice C) h229 NE 24th st apt 2
Glosch May (wid Fred P) h1375 NW 75th st
Gloss Earl J r353 NW 5th st apt 1
" Harry D C S practitioner 1001-2 Olympia Theatre bldg h268 NE 33d st apt 3e
" Ida Mrs smstrs Cromer-Cassel's r 3500 Euclid dr (Coral Gables)
" Jas A r353 NW 5th st apt 1
" Mary M Mrs C S practitioner 1001-2 Olympia Theatre bldg r268 NE 33d st apt 3e
Glosson Wm F (Etta R) tile str h7153 NW 1st pl
Glover Danl G barber r2272 SW 13th
" Edw M meter rdr Fla Power & Light Co h61 NE 71st st
" Ethel Mrs buyer W M Burdines Sons Inc r2425 SW 6th st
" Geo brick mason r344 NW 53d st
GLOVER GRACE D, Asst Cashr Bank of Allapattah, r1384 NW 33d st
" Harry N (Helen B) driver h746 NW 40th st
" John (Ethel) mason h Keystone Tourist Camp
" Marie clk C C Calvert r140 SW 12th av apt 11
" Ralph slsmn r206 SW 6th av
Glow Edith Mrs (VanAikren Restaurant) h151 SE 2d st
Glock Thos W (Bertha L) slsmn Welbom C Phillips Inc h1754 NW 52d
GLUNTS JAMES D & CO, Certified Public Accts (Mass and New York), Benjamin M Smethurst Resident Mgr, Audits, Accounting, Investigations, Systems, Income Tax Reports 819-20 Olympia Theatre Bldg, Phone 3-5416
Glunz Carl meat ctr r350 NW 25th av
Gluyas Lucy sten r175 NW 54th st
Glyck Saml r Henrietta Towers
Glynn Apartments 32 NE 41st st
Gnewuch Otto A (Anna) h3345 SW 4th
Gobel Harry D (Ida) carp h7811½ N W 15th av
Goberna J Mitchell (Sophia) pres-genl mgr Mitchell's Tours Inc h1879 S W 10th st
Gobie Neil S (Anna K) investigator Fla Power & Light Co h249 NE 20th st
" Philip H (Susan S) h249 NE 20th st
Gobleman Wm E (Louise) plmbr h rear 2018 NW 1st av
Gobush Walter baker r626 S Miami av
Godard Aretas A (Eva V; Godard & Hyzer) h3614 Bay View rd
" Danl V (Helen M) pres Godard & Sydow Inc h145 NE 94th st
" Guenn P r3614 Bay View rd
" Luther F (Joel) clk h252 NW 1st st apt 12

H. L. CLARK & SONS CO., Inc.

PAVING CONTRACTORS

Dealers in Pit Rock and Boulders

56th ST. AND DIXIE HIGHWAY, N. E. 2d AVE.

PHONE 6977

GODARD
land l
Congr
" & Sydov
D V
Sydov
Godbold
" Thos V
cayne
Godbee L
28th st
Godbes S
Store
Godbey H
" Walter
Godd Ray
GODDARD
Trea:
Wash
" Loren
30th
" Louise
" Lucile
fer 6
" T Ray
W 1s
Godfrey
" Alma
" Della
av
" Edw
24th
" Edwin
h153
" Ewart
NW
" J B
and
" Vergil
Godin F
Hot
Goding
SW
Godley
" Mia
st
" Lillia
st
" Marg
Godling
4th
Godmar
7th
" Leste
" Wills
Godsch
r18
Godson
7th
Godwin
r d
" Anni
" Arnc
" Davi
Av
" Doyl
45

FR

COI

THE FIRST NATIONAL BANK

OF MIAMI, FLORIDA

Capital and Surplus \$2,400,000.00

WHITE POPULATION (1927)

527

GODARD & HYZER (A A Godard, Leland Hyzer), Attorneys-at-Law 1508 Congress Bldg, Phone 37914
 " & Sydow Inc 1314 NE 2d av contrs D V Godard pres-treas John A Sydow v-pres and sec
 Godbald Sallie Mrs r660 NW 2d st
 " Thos W jr teller Bank of Bay Biscayne r40 NE 3d av
 Godbee Lonnie (Jaunita) driver r59 NW 28th st
 Godbes Sidney br mgr Mother Hubbard Stores No 1
 Godbey H N clk E S Street Grocery Co
 " Walter slsmn Berner-Pease Co
 Godd Raymond C clk r334 NW 23th st
GODDARD D ROLL (Louise C), Sec-Treas Lummus & Young Inc, h421 Washington av, Miami Beach
 " Loren R (Esther) electn 1B 126 SW 30th av h do
 " Louise student r421 Washington av
 " Lucile sten John E Walthers Transfer & Storage Co r427 SW 3d st
 " T Ray (Anna B) auto mech h2060 N W 1st ct apt 6
 Godfrey Alice sten h1132 NW 3d st
 " Alma R waitress r1507 N Miami av
 " Della (wid Lawson) r1507 N Miami av
 " Edw E (Isabella) plstr h4221 NW 24th av
 " Edwin B (Marjorie A) floor walker h1536 NE Miami ct
 " Ewart (Ruby) landscape gdnr h2387 NW 9th st
 " J B soft drinks se cor NW 2d av and 21st st r do
 " Vergil F driver Florida Paper Co
 Godin Harvey driver r Thos Jefferson Hotel
 Goding Percy J (Bertha A) chef h2811 SW 2/4th st
 Godley Jos L (Eliz L) pres Greater Miami Press h Live Oak dr nr 82d
 " Lillian K (wid Wm) h cor NW 79th st and 25th av
 " Marguerite J student r1939 SW 8th
 Godling Chas (Eliz) meat ctr h329 SW 4th st
 Godman John D (Mattie E) h2240 SW 7th st
 " Lester L (Minnie) ins h1326 NW 80th
 " Wilson lab r228 NW 5th st
 Godscheer C J mech Brigman Nash Co r18 NW 23d st
 Godson Maria (wid Richd) r126 SW 7th av
 Godwin Anna nurse Jackson Mem Hosp r do
 " Annie L (wid Wm) r1520 NW 8th st
 " Arnold M sten r1368 NW 31st st
 " David M (Mary L) v-pres Oversea Awning & Tent Co h128 NW 33d st
 " Doyle V (Lillian R) driver h268 NW 45th st



GODWIN

" Lillian R mach opr r268 NW 45th st
 " Ollin (Pansy) carp h2241 NW 82d st
 " Ralph r158 SW 7th st
 " Richd H (Mattie C) h269 NE 33d st apt 1A
 " Robt presser r450 NW 19th st
 " Wm eng r1520 NW 8th st
 " Wm A (Crystle L) metal wkr h3556 SW 23d st
 " Wm I (Edna) driver h620 NW 6th av apt 2
 Goebel Elbert V (Minnie) clk h rear 2169 NW 32d st
 " Wm pntr r rear 2169 NW 32d st
 Goehring Blondon B (Lillian L) mech r 161 NW 29th st
 Goeling Ernest E mgr Universal Cleaners & Dyers
GOENNER WM F (Sarah Jane), Sec-Treas Miami Photo Engraving Co, h8 Virginia Apts 630 SW 17th av
 Goergler Jos F (Mary J) abstractor r 1644 SW 4th st
 Goes Henry auto mech r60 NW 46th av
 Goessing Dorothy waitress r434 NW 25th st
 Goessling Herman (Marie) atndt City Parks h434 NW 25th st
 Goethe Chas H student r137 NE 46th st
GOETHE REUBEN (Olivia), Prop Florida Hotel Janitors Supply, h137 NE 46th st
 Goetling Chas (Eliz) dept mgr O J Tanner & Co r329 SW 4th st
 " Mathilda checker Miami Lndry Co r 3405 NW 11th pl
 " Paul (Anna) pntr h3405 NW 11th pl
 " Wilma clk S H Kress & Co r3405 NW 11th pl
 Goetz Carl H asst mgr Villa D-Este Hotel r do
 " Harry (O G Sandwich Shop) r Henrietta Towers
 " Jos r40 NE 3d av
 Goff Albert B contr r5455 NW 5th av
 " Dorsey R (Lillian A) r167 NW 45th
 " Edwin P mech r557 NW 22d st
 " Ella (wid Abr) r696 NE 68th st
 " John D (Sarah) mech h557 NW 22d st
 " Josephine (wid Gustavus) r696 NE 68th st
 Goffe Hugh A (Laudie) clk O H Hawkins r301 NW 20th st

FRANK T. BUDGE CO.

"A MIAMI INSTITUTION"
 COR. FLAGLER AND MIAMI AVE.

HARDWARE
 FURNITURE
 SPORTING GOODS
 HOUSE
 FURNISHINGS
 PAINTS AND OILS

CLOW

BROS MOTOR CO.

PARTS

SERVICE

For Economical Transportation



DISTRIBUTORS
 1114 N. E. SECOND AVE.

Phone 8427

BRANCHES
 1125 S. W. 8th St.
 and
 237 N. W. 22d St.

Copeland
 Electric
 Refrigeration

BOHN
 SYPHON
 AND
 SEEGER
 Refrigerators

HEAT
 AND
 COLD

2401 N. W.
 Second Ave.

PHONE
 8981

erties
Inc.
e 3-5112

Auto Brake
t
11 NW 27th

a Nash Co

E CO OF
E Hainlin
NE 1st av
hmn Moore
5th st
30 SW 10th

Dallas Park
st
Snedigar
h1366 Wa-

Mkt) h525

Washington

plmbr h543

THE. Geo
Varnishes,
Final Hol-
1st st. Tel

7th av
in Merrill-
h1336 NW

Virginia st
37 NW 27th

h ter
NW 23th st
Miami av
NEWARK,
Ice Agency
Natl Bank

los) 112 S

N Ehrett,
st
J Putzer,
60th st
NW 7th st
NW 7th st
C S pract
4 Biscayne

Henderson

Olympia
rson r2420

NW 1st pl
v
Glover &
ana av

TATUM BROTHERS

TATUM BLDG. CORPORATION
200 E. FLAGLER ST. REALTORS
Established 1883 PHONES
7434-7435-7436-7437

WHITE POPULATION (1928)

405

GLOVER

" Calvin K & Associates (Calvin K Glover, Myron T Sprague, Wm V Little) 1220 S Miami av
" Edw M meter rdr h61 NE 71st st
" Eliz F (wid Wm G) r1976 NW 24th av
" Ethel Mrs buyer Burcine's Inc r956 Euclid av
" Fred h9 NW South River dr apt 4
GLOVER GRACE D, Asst Cashr Bank of Allapattah, r1384 NW 33d st
" Harry N (Helen B) slsmn Orange State Oil Co r746 NW 40th st
" Houston (Hattie) carp h317 NW 38th st
" John (Martha) dishwasher Hav-A-Lunch r1818 NW 1st av
" Marie h rear 140 SW 12th av apt 3
" Wm H city pass agt S A L Ry r936 Euclid av
Glowczynski Edw (Edith) clk PO r Dorn Hotel
Glowe Edw (Edith M) bkpr h129 SW South River dr
Gnosselius Mary sten Chappell & Allen r1535 SW 7th st
Gobbel Harry D (Ida) carp h328 NW 41st st
Gobei Jas A (Grace) agt in chge Maryland Casualty Co Claims Div h 1769 SW 10th st
Goberna J Mitchell (Sophia) pres Mitchell's Tours Inc h1879 SW 10th st
Gobie Neil S (Anna) meter rdr Fla Power & Light Co r249 NE 20th st
" Phillip H (Susie) asst mgr h249 NE 20th st
Goble Geo H (Ida C) h3533 (3527) NW 2d ter
Goda Geo (Grace; Hardie Soda Fountain) h640 NW 35th st
Godard Aretas A (Eva A; Godard & Hyzer) h3614 Bay View rd
" Danl V (Helen) pres Godard & Sydow h145 NE 94th st
GODARD & HYZER (A A Godard, Leland Hyzer), Attorneys-at-Law 1508 Congress Bldg, Tel 3-7914
" & Sydow Inc. D. V. Godard pres J A Sydow v-pres. conrs 1314 NE 2d av. rm. 215-216
Godbee Lonnie (Juanita) truck driver r59 NW 28th st
Godber Arth L (Florence) h1328 NW 45th st
" Sidney clk r1328 NW 45th st
Godbey Henry N (Emily) ship clk E S Street Gro Co h1033 NW 31st st
" Walter H (Lillian) r3112 NW 14th av
" Walter H jr slsmn Berner-Pease Co r3112 NW 14th av
Godbold Thos W teller Bank of Bay Biscayne r1157 SW 5th st

GODDARD D ROLL (Louise C), Sec-Treas Lummus & Young Inc, h421 Washington av (Miami Beach)
" Euphemia M (wid Wm H) r212 NW 7th av
" Jesse W lab r206 SW 6th av
" Loren R (Esther) elec contr h67 Glen Royal Blvd apt 8
" Thos r1157 SW 5th st apt 4
Gode Arth (Etta) ironwkr h419 NW 35th st
Godesky John J (Rosa) r184 NE 82d ter
Godfrey Alma waitress Grand Ma's Kitchen r1710 NE 1st av
" C W h521 SW 6th st apt 19
" Chas gdnr h4336 NW 24th av
" Della (wid Edlason) r1710 NE 1st av
" Edw E (Isabelle) plstr h4221 NW 23d av
" Emma (wid Edw) r4336 NW 24th av
" Ewart (Ruby) landscape gdnr h735 NW 24th av apt 2
" John A (Bessie) carp r736 NW 22d pl
Godley Lillian K (wid Wm) h NW 79th st and 30th av
Godman John D (Mattie E) h2240 SW 7th st
" Lester L (Minnie) h1326 NW 80th st
" Richd H h3300 Biscayne Blvd apt A1
Godshall Edith sten McCay & Holcomb h336 NE 28th st
Godson Maria (wid Richd N) r126 SW 7th av
Godwin Annie L (wid Wm) r1520 NW 8th st
" Arnold M sten r1368 NW 31st st
" Arth W sheet metalwkr Moore's Roofing & Sheet Metal Wks Inc r 15 NE 17th ter
" David M (Lula) restr 1023 NW 20th st h128 NW 24th st
" Doyle V (Ruth) n268 NW 45th st
" Erma R Mrs asst auditor Genl Pub Utilities Co r1536 SW 9th st
" W Arth (Eloise) sheet metalwkr h 3556 SW 23d st
" Wm I (Edna L) driver h rear 268 NW 45th st
Goebel Albert V (Minnie) clk h1044 NW 29th st
Goede Anna Mrs h1229 NW 5th st apt 3
" Helen r1229 NW 5th st apt 3
" Mildred r1229 NW 5th st apt 3
Goenner Wm F (Sarah J; Miami Photo Engraving Co) h403 SW 12th av apt 2
Goens Henry R barber Gus Callas r 1512 NE Miami pl
" Wm J pntr r1044 NW 29th st
Goepel A h3300 Biscayne Blvd apt B1
Goessling Herman emp Div of Parks r1423 NE Miami pl
Goethe Chas confr 31 NE 36th st r137 46th st

**HOPKINS-CARTER
HARDWARE
COMPANY**

**A
Complete
Stock
of
Marine
Supplies
for the
Boating
Trade**

**DUPONT
PAINTS
DUPONT
DUCO**

**Telephone
5194**

**139
S. Miami Av.**

**Union
Clothing
Co.**

**Men and
Women's
Wearing
Apparel**

**Open A
Charge
Account**

**324
N. Miami
Avenue**

TRUST COMPANY OF FLORIDA

8% First Mortgage Investments

TRUST COMPANY OF FLORIDA BLDG.

435-37 N. E. 1st AVE.

TEL. 8166

Orlo E. Hainlin

General Insurance

Fire Casualty Marine Fidelity and Surety

3d Floor Security Bldg.

PHONE 6028

Ideal Roofing Co.

Composition and Tile Roofs a Specialty

338 S. MIAMI AVE.

PHONE 2-1133

JUNKIN & AVANT, Inc.

INSURANCE, LOANS AND BONDS

227-228 Seybold Bldg.

Phone 35664

1488 Ninetieth St NE

MIAMI

Bay Shore Drive N

112 Bings Christina H
120 Townsend Marvin H
203 Hobin Martin J
269 Brion Wm P
287 Waldhauser John T
407 Recin Augusta Mrs
792 Sinclair Robt
793 Pearson Emil P
Kline John M
Kirkpatrick Tourist Camp
Kirkpatrick Jas L

NINETIETH ST (NW)—From N Miami av west
48 Fleming Wade H

NINETY-FIRST ST (NE)—From N Miami av east
120 Fuller Geo L
144 Elder Warren F
Shields Geo M
144½ Shields Geo M

257 Phinney Clarence A
Foskitt Arth D
280 Rheney Chas E
469 Sandberg Chas E

NINETY-FIRST ST (NW)—From N Miami av west
171 Bivins Arth C
2260 Gaskin Adam

NINETY-SECOND ST (NE)—From N Miami av east
121 Marsh A Pierce
137 Dudley Fredk B
161 Luster Edmund C

453 Vacant
477 Vacant

NINETY-FOURTH ST (NE)—From N Miami av east
At F E C Ry Bruce E L Co Inc

128 Evans Ira C
145 Godard Danl V conts
385 Vacant
431 Tyler Hansford D
447 Vacant
449 Vacant

NINETY-FOURTH ST (NW)—From N Miami av west
ss nr 21st av Vacant

NINETY-FIFTH ST (NE)—From N Miami av east
68 Vacant

145 Gaddard D V
236 Hawkins Jas S

NINETY-SIXTH ST (NE)—From N Miami av east
61 Plumer Richd

108 Nelson Henry C
136 Stevens Mary

287 Harris Ellen S Mrs
339 Wilson Harold M

NINETY-SEVENTH ST (NE)—From N Miami av east
361 Hillif Wm H
369 Mason Alex

NINETY-SEVENTH ST (NW)—From N Miami av west
76 Reynolds Reginald G
821 Vacant

NINETY-EIGHTH ST (NE)—From N Miami av east
145 Phinney Fred G
273 Zachry David S

352 Laymon Gilbert D
353 Vacant
366 Owens Harry F

NINETY-NINTH ST (NE)—From N Miami av east
52 Giboney Jennie Mrs
60 Temple Avritte R
69 May Robt D

128 Drumpelman Wm J
160 Young Roland M
247 Snell Asher L
269 Harris Frank H

343 Goldsworthy Walter M
389 Sydow John A

ONE HUNDRETH ST (NE)—From N Miami av east
83 Vacant

ALLAPATTAN DR—From NW Fourteenth av and Fourteenth av to Eighteenth av
1442 Vacant
1463 Vacant
1477 Dennis Edna W Mrs

1500 Vacant
1530 Crulshank Harry D
1540 Vacant
1551 Levin Kent H
1559 Lehman Elmer P
1560 Moss F P Plumbing Co

1606 Daffodil Gift Shop
1692 Weeks Geo M
1695 Romanow Hyman
1678 Olinger Service Sta

1700 Williams Earl
1701 Lester Ernest L
1706 Blackshaw Frank gro
Albert Harry meats
1716 Vacant
1721 Wallace Roland S filling sta

BAY SHORE COURT (NE)—From NE Thirteenth north, 1 west of Biscayne Bay
1327 Hawes Leslie M gro
1333 Albina Apartments

Boone Robt W
Ginn Gordon L
Sewell Crozier W
1343 Furseay John
Drake Frank E

1345 Bay Shore Apartments
Manning Helen C Mrs
Cook Homer G
Houser Lawrence B
Reed Beasle
Botterill Ethel G
Carmean Ruby Mrs
Schadel Victor
Smith Harry E

1347 Deleach Apartments
Karper I H
Burke John J

1415 Vacant
1419 Blue Stone Apartments
Thurston Thos
Coates Archie
Romain John C
Moore Obe
Campbell Wm J
Kitchen Wm H
Rengger Geo H
Simpson Arth
Green Alf J
Armstrong John S

BAY SHORE DRIVE (N)—From 13th to 19th, 20th to 21st, 38th to 39th and 55th to 60th
1301 Manhattan Cafe
1303 Brewer Florence beauty parlor
Ogburn Cleaners

1305 Kaudis Geo restr
1307 Bayshore Drive Hotel
1309 Vacant
1311 Flowers Harold furn repr
1313 East Coast Glass Co
1316 Dresback John S real est

1320 Gore Investment Co
1329 Vacant
1330 Scheuer Albert
1335 Price W F Battery Supply Co Inc

1337 Vacant
1367 Vacant
1369 Yborra Eleanor R interior decorator
1371 Parker Ray signs

1401 Oakland Miami Co autos
1413 Fla Trading Corp hotel equipment
1419 Casher Jas
Kubalek Hans
Mitchell Chas S

1431 Vereen Effie Mrs
1440 Yager J Wood
1442 Deringer Don F
1445 Venetian Hotel

1536 Christie Sydney Mrs
1542-48 Merrisan Apartments
Morrison Roy A
Grubbs Robt E L
Patterson Richd A

1700 Graham Ziba F
1712 Luther Josephine Mrs
Smith Archlaus L
1720 Quinn John J
1737 Flagler Memorial Library
1756 Hardee Montelus C

1822 Brand John
1852 Vacant
1866 Merriam Apartments
Kammerer Edw A

2010 Wolfe Albert I
2040 Harley Wade E
2066 McGahey Thos B
Nadreau Alphonso
2072 Kotton Anna Mrs
Twenty-first to Thirty-eighth

3838 Miller H Dale
3880 Lamar Minter W
Thirty-ninth to Fifty-sixth
5630 Shaffner Philip H
Fifty-seventh to Fifty-ninth
5925 Reinders Otto V
5930 Prulett Norman
5935 Filer Henry H
5950 Vacant

E
N. W. 63

Bay Shore
BAY SHORE
Eleventh to
1102 Vacant
1110 Schmidt

1211 Smith Jo
1239 Fedora C
1408 Doran Jo
rear Brindley
1412 Jones Fr
1412½ Blake
1418 Roache J
1430 Price-WI
1438 Shutta F
1446 Collins J
1450 Vacant

1650 Thatcher
1701 Pattison
1716 Helm Va

1801 Skinner
1921 Scheer V

2035 Edmunds
2045 Rowe Ja

2109 Cook Ge
2131 Hassler
2143 Donovan
Twenty-se

2425 Culberts
2461 Culberts
2475 Whiting
2484 Cole Cl
2485 Cola Er

2533 Bann W
2535 Feler H
2539 Hinson
2550 Coconut
Inc
Twenty

3230 Roberts
3246 Swanson

3300 Swanson
3308 Conrad
3395 Keene J
3397 Jackson
Simmon
3397½ Stanf
3398 Minott

3403 Barnet
3444 Carney
3458 Hyzer

BAY SHOR
458 13th r
1301 Cemen
light
1307-23 Sta
1312 Rainbo

1409 Motz
BISCAYNE
merly N I
Third av)
to 55th av
nw cor Hot
Langfo

22 Vacan
24 Vacan
26 Bay S
Rooms:
8 Kisba
wea
9 Jerels
10 Axrac
11 Vacar

MIAM

Drake Lumber Yards, Inc.

"SUPERIOR LUMBER"

Three Phones: Dial 23188

1800 N. Miami Ave.

WATERS REALTY CO.

Realtors



38 Years in South Florida

342-344 N. E. 2d Av.

Phone 2-1480



Kiser Drilling Co.

CONTRACTORS FOR Artesian Wells, Water Wells, Drain Wells, FIRE HYDRANTS, SOUNDINGS, ETC. 288 N. W. 30th STREET



537 N. W. 5th ST.

MIMEOGRAPHING

PHONE: MIAMI 2-3091

1070

(1929) R. L. POLK & CO.'S

84TH ST (NE)—Contd
160 Gibson Ruth N Mrs
185 Oliver Andrew M
Second av intersects
281 Lindsey Clarence W
Third av to Eighth av intersect
864 Kimball Ross
888 Davis J Law
890 Yeats John E
924 Marshall Andrew J
968 Waller F Earle
986 Renuart Adhemar
1014 Padgett Lydia M Mrs
1028 Jones Chauncey F
1050 Schubert Bernard E
1132 Ungar Arth A

84TH ST (NW)—From NW 3d av west
Fourteenth av intersects
1481 Kees Jas L
1490 Laughlin Wm T
Fifteenth av intersects
1509 Lee Harry E
Sixteenth av intersects
Seventeenth av intersects
1748 Englund Claus
1751 Vacant
1758 Lindgren Agda Mrs
1770 Smith Lena Mrs
Eighteenth av to Twenty-first av intersect
2129 Vacant
2131 Vacant
2135 Brothers Geo H

85TH ST (NE)—From N Miami av east
First av to Sixth av intersect
635 Kintz Ervin S
660 Robinson Irving G
677 Sherrill John M
685 Brackett Jane H Mrs
698 Frollicher Edw F
Seventh av intersects
749 Johnson H L
753 Lott Theo J
755 Greenwood Chas E
757 Laurence Rae Mrs
787 Stoyle Richd H poultry
789 Muir Jas F contr
795 Vacant
796 Howard Alvina Mrs
799 Jenkins Sarah T Mrs
1093 Vacant
1121 Samuels Harry M

85TH ST (NW)—From N Miami av west
First av to Eighteenth av intersect
1845 Crockett David
Nineteenth av to Twenty-first av intersect
2137 Vacant
2150 Crenshaw Aungulsh M
Twenty-second av intersects
2203 Vacant
2205 Vacant
2207 Vacant
2209 Vacant
2211 Vacant

86TH ST (NE)—From N Miami av east
First av to Third av intersect
301 Rossey Chas A
Fourth av to Seventh av intersect
732 Rogers Leonard
740 Ritz Chas
744 Vacant
745 Shore Crest School
770 Vacant
Eighth av intersects
829 Obenour Geo W

86TH ST (NW)—From 19th av west
Twentieth av intersects
2011 Headlee Burton J
Harding Jessie V Mrs nurse
2021 Vacant
2079 Symonette Chas D
Twenty-first av intersects

86TH TER (NW)—From 15th av west
2151 Gavagni Angelo
2180 Sisk Geo W

87TH ST (NE)—From N Miami av east
25 Ivey Lucius E

87TH ST (NW)—From N Miami av west
2409 Vacant

88TH ST (NE)—From N Miami av east
44 Carroll John T
46 Vacant
48 Burke John F
50 Burke John
First av to Third av intersect
320 Wolff Herman
386 Evans Frank S
Fourth av intersects
436 Klitchko Frank contr
900 Baldwin Elmer L

88TH ST (NW)—From N Miami av west
2191 Wix Wm E

89TH ST (NE)—From N Miami av east
6 Kuhler Barney
52 Ehrlich Fredk
First av intersects
136 Vacant
Second av intersects
285 Vacant
Third av intersects
340 Vacant
Fourth av intersects
413 Vacant
1036 Phillips Wm I
1228 Jackson Chas S

89TH ST (NW)—From N Miami av west
1780 Gaskell Pearl S Mrs dairy

90TH ST (NE)—From N Miami av east
29 Racicot Arth C
48 Fleming Wade H
65 Heiss Martin L
92 Darnell Chas
First av intersects
112 Bings Christina H
120 Vacant
124 Vacant
Second av intersects
203 Vacant
269 Brion Wm P
276 Fisher Vernon T
287 Waldhauser John T
Third av intersects
338 Posey Vernon J contr
345 Howlett Velmar L
350 Koons Raymond F
368 Davis Geo N
376 James Glenn C Rev
Fourth av intersects
405 Conley Chas H
407 Vacant
Fifth av intersects
Sixth av intersects
688 Turner Chas C
Seventh av intersects
740 Armstrong Franklin P
753 Vacant
757 Vacant
759 Cross Chas A
761 Vacant
767 Lechner Chas G
771 Vacant
777 Vacant
785 Vacant
787 Vacant
789 Goodman David R
791 Vacant
793 Kirkpatrick Lyman B gro

90TH ST (NW)—From N Miami av west
Twenty-first av intersects
2109 Vacant
2135 Hart Robt L
2149 Vacant
2159 Vacant

91ST ST (NE)—From N Miami av east
29 Vacant
First av intersects
120 Fuller Geo L
144 Davis Ralph C
Second av intersects
257 Hall C Stuart jr
280 Rheney Elaine Mrs
Third av intersects
304 Conrad Geo
353 Knight Floyd
Fourth av intersects
428 Beum Winfred R
469 Sandberg Chas E

91ST ST (NW)—From N Miami av west

First av intersects
167 McLean Dugald
171 Bivins Arth C
Second av intersects
206 Lane F Edgar
Third av to Fifth av intersect
503 Albrecht Fredk
533 Roberts Vera Mrs
Second av to Twenty-first av intersect
2150 Vacant
2160 Wittman Fredk
2180 Carvel Wm J
2190 Vacant
Twenty-second av intersects
2260 Vacant
Twenty-third av intersects

92D ST (NE)—From N Miami av east
87 Bolles Geo C
First av intersects
121 Vacant
137 Philpitt Marshall S
152 Miller Nellie L B Mrs
Second av intersects
275 Vacant
Third av intersects
313 Saunders Richardson
341 Meloy Edith Mrs
Fourth av intersects
440 Holmes Roy J Dr
453 Johnston Mont S
477 Vacant

93D ST (NE)—From N Miami av east
First av to Fourth av intersect
436 Vacant
444 Goodrich Clarence L
461 Vacant
469 Vacant

94TH ST (NE)—From N Miami av east
First av intersects
128 Vacant
145 Godard Danl V contr
Second av and Third av intersect
379 Jeffries Jas B
398 Vacant
Fourth av intersects
431 Tyler Hansford D
436 Vacant

94TH ST (NW)—From N Miami av west
1144 Houghtaling Frank
1145 Diamond Wm E
2110 Vacant
2111 Vacant

95TH ST (NE)—From N Miami av east
First av intersects
126 Thill Leonard S
145 Vacant
Second av intersects
236 Hawkins Jas S
Third av and Fourth av intersect
457 Vacant

96TH ST (NE)—From N Miami av east
61 Plumer Richd
70 Vacant
First av intersects
107 Nelson Henry C
136 Balle John C
Second av intersects
262 Wright Roy C
284 Vacant
287 Harris Ellen S Mrs
Third av intersects
339 Wilson Harold M
Fourth av intersects
438 Rose Jos E
540 Turner John C
575 Vacant
Sixth av intersects
664 Collins Wm J
Manville Rae R
670 Miami Shores Lumber and Supply Co
678 Kahl R Geo

96TH ST (NW)—From N Miami av west
First av to Fourth av intersect
420 Zeiber Frank G
496 Doolittle Glover H
Fifth av intersects

IVES OJUS, FLORIDA

MIAM

501 Hodge Wm G
Sixth av to Eighteenth av intersect
1851 McArthur Jas N
1861 Dade County Agriculture School Farm
Nineteenth av intersect
1997 Brady Walter C
Twentieth av intersect
2001 Marston Thos W
Twenty-first av intersect
2111 Dekle Allen

97TH ST (NE)—From N Miami av east
First av to Third av intersect
209 Skillman Apartments
Apartments:
1 Garrison Edw M
2-9 Vacant
10 Carpenter Earl D
Street continued
354 Vacant
361 Blackwell T Jos
369 Vacant

97TH ST (NW)—From N Miami av west
76 Scranton Don C
First av to Sixth av intersect
675 Holtzclaw Jas C
Seventh av to Eighth av intersect
821 Vacant
871 Hill Wm P
875 Reynolds Henry C
879 Reynolds Giles D
884 Bobbitt Walter L
Ninth av to Twenty-first av intersect
2142 Weekley Jas

98TH ST (NE)—From N Miami av east
52 Vacant
First av intersects
117 Magee Kath I Mrs
140 Vacant
145 Phinney Fred G
Second av intersects
273 Douglas Chas S
276 Skillman John J
Third av intersects
336 Meads Cuyler O
352 Laymon Gilbert D
363 Pruitt Frank O

98TH ST (NW)—From N Miami av west
813 Krollpfeifer Tony
820 Root Geo H
Ninth av to Nineteenth av intersect
1961 Fleming Mary J Mrs

99TH ST (NE)—From N Miami av east
60 Bohn Edw J
69 May Robt D
First av intersects
103 Clutter Benj E
128 Mossbarger Henry I
160 Collier Chas M
Second av intersects
245 Vacant
253 Barge Wm J Dr
269 Harris Frank H
Third av intersects
304 Schively Paul E
310 Bracken Johnnye Mrs
343 Goldsworthy Walter M
389 Sydow John A

99TH ST (NW)—From N Miami av west
First av to Sixth av intersect
660 Vacant
Sixth av to Eighth av intersect
837 Hendrickson Martin J
847 Kallio Vaino A
Ninth av to Twentieth av intersect
2013 King Fredk B

100TH ST (NE)—From N Miami av east
33 Vacant
First av intersects
115 Vacant
Second av intersects
269 Tarboux John W
Third av intersects

Andy Macera
Myrlene Macera
145 N.E. 94th Street
Miami Shores, Florida 33138
(305) 759-7696

29 March 1996

Mr. Warren Bittner
10108 N.E. 1st Avenue
Miami Shores, FL 33138

Re: 145 N.E. 94th Street

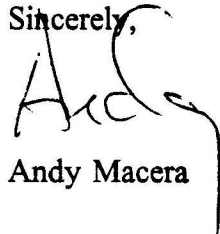
Dear Warren:

This shall serve as confirmation of our decision to have the above-referenced property nominated for historical designation.

We appreciate your offer to have our home as one of the stops on the historical tour scheduled for April 6th; unfortunately, because of the short notice and the fact that we will have several projects in progress at that time, we must regretfully decline the offer. We are, however, agreeable to making the house available, at our convenience, for future historical tours or events.

We look forward to hearing from you soon.

Sincerely,



Andy Macera

Miami Shores Village
F L O R I D A

HISTORIC PRESERVATION BOARD - MIAMI SHORES VILLAGE

REQUEST FOR NOMINATION FOR LANDMARK DESIGNATION

Name of Property Owner ANDY MACERA & MYRLENE MACERA

Address of Property 145 N.E. 94th STREET

Owner's Address, if different _____

Date Built 1926-7 Phone (Day) 358-6300 (Evening) 759-7696

Brief Description of Property _____

SEE FLORIDA MASTER SITE FILE, SITE INVENTORY FORM

ATTACHED AND EXCERPTS FROM POLK'S MIAMI DIRECTORY

1925, 1926, 1927, 1928 & 1929

Brief History of Property _____

SEE FLORIDA MASTER SITE FILE, SITE INVENTORY FORM

ATTACHED. THE ARCHITECT WAS MARION MANLEY, THE FIRST

REGISTERED WOMAN ARCHITECT IN DADE COUNTY.

Comments THIS HOME WAS FIRST OCCUPIED BY DANIEL V. &

HELEN M. GODARD. DANIEL V. GARDARD WAS THE PRESIDENT

OF THE CONSTRUCTION FIRM OF GODARD & SYDOW, WHICH

CONSTRUCTED MANY OF THE HOMES AND PUBLIC IMPROVEMENTS

FOR THE SHORELAND COMPANY AND NEW MIAMI SHORES CO.

Please return to: Historic Preservation Board
Building Department
MIAMI SHORES VILLAGE HALL
10050 N.E. 2nd Avenue
Miami Shores, Florida 33138

You will be contacted when your property is nominated.
Thank you for your interest!

Andy Macera
Myrleene Macera
SIGNATURES OF OWNERS

4.24.96
4/24/96
DATE

RESOLUTION NO. _____

A RESOLUTION OF THE MIAMI SHORES VILLAGE COUNCIL ACCEPTING THE RECOMMENDATION OF THE HISTORIC PRESERVATION BOARD TO DESIGNATE THE PROPERTY AT 145 N.E. 94TH STREET A MIAMI SHORES HISTORIC LANDMARK AND INSTRUCTING THE VILLAGE CLERK TO RECORD THE HISTORICAL LANDMARK COVENANT IN THE PUBLIC RECORDS OF METROPOLITAN DADE COUNTY.

WHEREAS, on April 24, 1996, the Historic Preservation Board, after considering the criteria for designation of historic landmarks found in section 11 1/2-3 of the Miami Shores Village Code, passed a motion, under section 11 1/2-5(b) (4), to recommend to the Village Council that the property at 145 N.E. 94th Street be designated as an historic landmark; and

WHEREAS, the current owners of the property, Andy & Myrlene Macera, initiated the nomination, and have consented thereto, by the execution of an Historical Landmark Covenant to run with the land; and

WHEREAS, the structure on the subject property was constructed in 1926, for Daniel V. Godard, President of the construction firm of Godard & Sydow, Inc., the firm responsible for constructing many of the homes in Miami Shores during this time period; and

WHEREAS, the architect of the structure was Marion Manley, the first registered woman architect in Dade County; and

WHEREAS, the subject structure is a subdued example of a two-story Mediterranean Revival Style residence;

NOW, THEREFORE, BE IT RESOLVED BY THE COUNCIL OF MIAMI SHORES VILLAGE, FLORIDA:

Section 1. The recitals and findings contained in the Preamble to this Resolution are hereby adopted by reference thereto and incorporated herein as if fully set forth in this Section.

Section 2. The Miami Shores Village Council hereby accepts the recommendation of the Historic Preservation Board and approves the designation of the property at 145 N.E. 94th Street as an historic landmark of Miami Shores Village.

Section 2. The Village Clerk is hereby instructed to record the Historical Landmark Covenant, voluntarily executed and submitted to the Historic Preservation Board by the owners of the subject property, Robert & Lisa Israel, in the public records of Metropolitan Dade County.

PASSED AND ADOPTED this _____ day of _____, 1996.

LOUIS IMBURGIA, MAYOR

ATTEST:

APPROVED AS TO FORM:

BARBARA FUGAZZI
VILLAGE CLERK

VILLAGE ATTORNEY
MARK ULMER

MEMORANDUM

To: Michael R. Couzzo, Jr.
Village Manager

From: Warren Bittner
Chairman, Historic Preservation Board

Re: Designation of Miami Shores Historic Landmark
145 N.E. 94 St., Miami Shores, FL

Date: April 25, 1996

At its meeting of March 24, 1996, the Historic Preservation Board passed a motion under section 11 1/2-5 (b)(4) of the Miami Shores Village Code to recommend that the Village Council designate the property at 145 N.E. 94th Street, owned by Andy and Myrlene Macera, as an historic Landmark.

This nomination was initiated by the property owners themselves under section 11 1/2-5 (b)(1) of the Code, and was supported by available historic documentation (See Request for Nomination for Landmark Designation attached). The Board analyzed the general criteria for determination of structures for designation as historical landmarks found in section 11 1/2-3 of the Village Code, and found that at least two (2) of the four (4) criteria had been easily satisfied, i.e., subsections (2) and (3).

Subsection (2): *Associated with the lives of persons significant in history*
- This home was built for Daniel V. Godard, President of the construction firm of Godard & Sydow, the firm responsible for the construction of many of the early homes built in Miami Shores. In addition, the architect of this home was Marion Manley, the first registered woman architect in Dade County, and who designed a number of significant Miami Shores residences.

Subsection (3): *Embody the distinctive characteristics of a type, period or method of construction* - This home is a subdued example of the Mediterranean style of architecture popular during the period. It incorporates many of its distinguishing features, such as cast stone quoins surrounding the entry door, a masonry balcony above the entrance, elongated arched windows, and a low pitched barrel tile roof (the Cuban tile was removed years ago), and textured stuccoed exterior walls.

To: Michael R. Cuzzor, Village Manager
Date: April 25, 1996
Page: 2

The owners of the property have consented to the designation, and have submitted a fully executed Historical Landmark Covenant (a covenant to run with the land), which must be recorded by the Village in the public records of Metropolitan Dade County, if the Council accepts the Board's recommendation and approves the designation, under section 11 1/2-5(b)(5).

The Historic Preservation Board would appreciate your placing this item on the Village Council's next agenda so that a spokesman for the Board may address the issue and formally present the Board's recommendation.

A proposed Resolution is attached in the event it is acceptable to the Council.

MIAMI SHORES VILLAGE HISTORIC PRESERVATION BOARD

APPLICATION FOR A
CERTIFICATE OF APPROPRIATENESS

please type or print clearly

NAME OF PROPERTY (if applicable): Goddard House

ADDRESS OF PROPERTY: 145 NE 94th Street

NAME(S) OF APPLICANT(S): Frederick L. Newman & Sharon K. Grosshort
(NOTE: IF THE APPLICANT IS A PERSON OTHER THAN THE OWNER(S), EVIDENCE OF THAT PERSON'S AUTHORITY AS AGENT MUST BE ATTACHED TO THE APPLICATION.)

TELEPHONE OF APPLICANT(S): (305) 757-1073; (305) _____

ADDRESS OF APPLICANT(S): _____
(if different than address of property)

PRESENT USE OF PROPERTY: Residence - Side Yard

CLASSIFICATION OF WORK FOR WHICH CERTIFICATE IS DESIRED:
(circle the letter next to the appropriate classification)

A. **MAINTENANCE OR REPAIR:** The act or process of applying measures to sustain the existing form, integrity and material of a building or structure and the existing form or vegetative cover of a site. It may include initial stabilization work, where necessary, as well as on-going maintenance and repair. Samples of material must be submitted with the Application.

B. **RESTORATION:** The process of accurately recovering the form and details of a property and its setting as it appeared at a particular period of time by means of the removal of later work or by the replacement of missing earlier work. All applications for restoration shall include site plans (if required by the Building Permit), a statement with bibliography historically justifying the work, and any additional photos or information to support the proposed work.

C. **REHABILITATION:** The process of returning a property to a state of utility through repair or alteration which makes possible an efficient contemporary use while preserving those portions or features of the property which are significant to its historical, architectural and cultural values. All applications for rehabilitation shall include: site plans (if required by Building Permit), and any other supplementary information, such as drawings, that will support the proposed project.

D. **DEMOLITION:** The process of destroying or tearing down a building or structure or a part thereof, or the process of removing or destroying an archeological site or a part thereof. The applicant shall include a report explaining why the proposed action should occur. If this action is to occur for reasons of financial hardship, all pertinent financial data should be included pertaining to the cost of preservation, demolition and new construction. Any other material pertinent to the application is also encouraged as supplementary information.

E. **NEW CONSTRUCTION:** The process of constructing a building or structure that has never existed at that location. Applications shall include: a site plan, elevations, floor plan and/or landscape plan.

SEE ATTACHED PLAN

DESCRIPTION OF THE PROPOSED PROJECT (Explain what changes will be made and how they will be accomplished - use continuation sheet if necessary - all applications shall be accompanied by at least one 3" x 5" photograph of the property):

To have a pool placed in back/side yard. No trees currently in place will be moved or destroyed. Trees approved by the Miami-Dade County Environmental Department will be planted after the pool is installed and landscaping completed. The yard is already secured by a fence on all sides.

CERTIFICATION

I (WE) CERTIFY TO THE BEST OF MY (OUR) KNOWLEDGE AND BELIEF THAT ALL INFORMATION IN THIS APPLICATION AND ITS ATTACHMENTS IS TRUE AND CORRECT:

SIGNATURE OF APPLICANT(S): *Suzanne L Newman* DATE: 2/14/99

[Signature] DATE: 2/14/99

SIGNATURE OF OWNER(S): *Suzanne L Newman* DATE: 2/14/99

[Signature] DATE: 2/14/99

FOR BOARD USE ONLY

APPLICATION DATE (date application received by Secretary of the Board): _____

DECISION OF THE BOARD (circle the appropriate number):

- 1. APPROVED
- 2. APPROVED WITH CONDITIONS (set forth conditions below):

3. DENIED

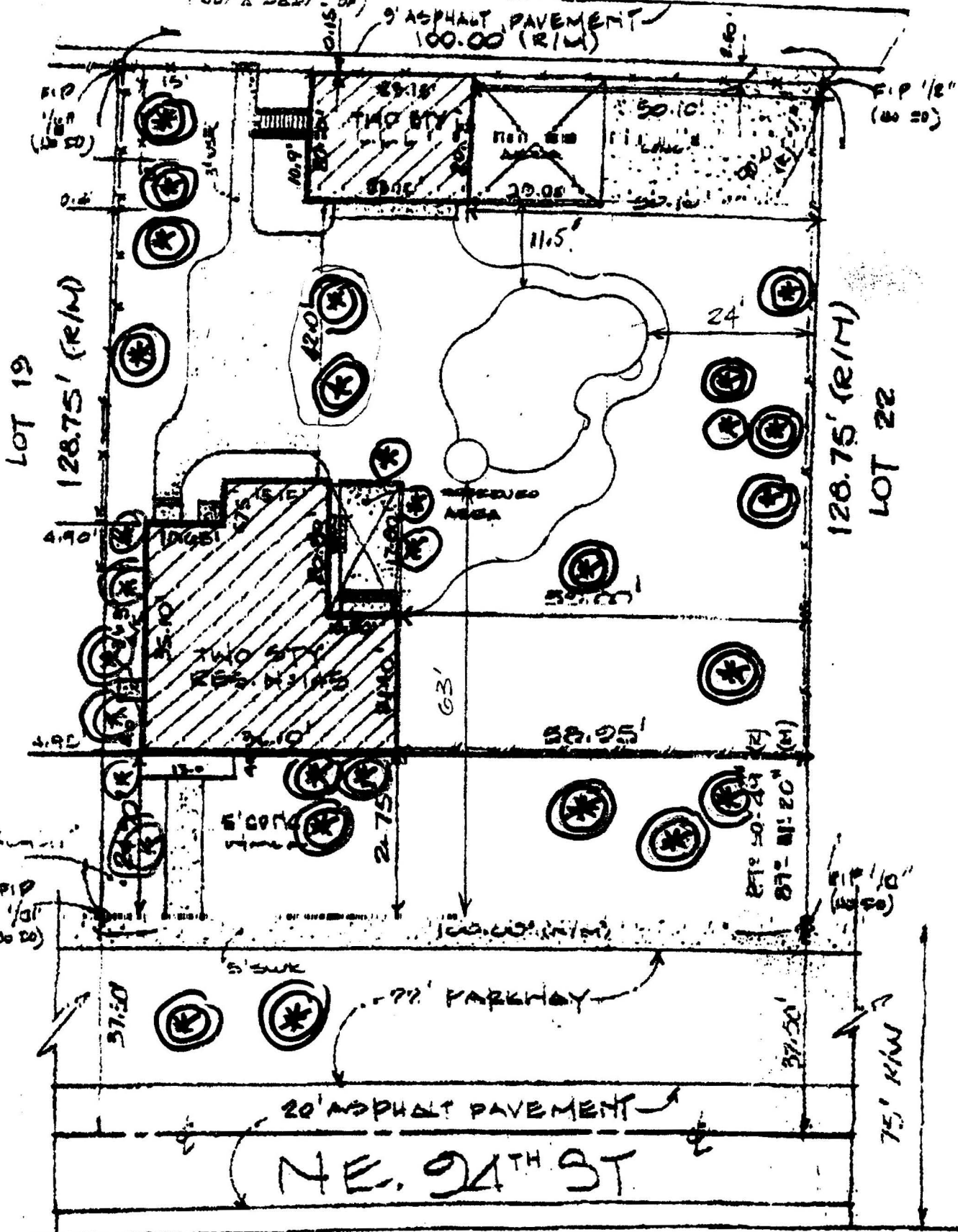
SIGNATURE OF CHAIRMAN: _____ DATE: _____

SKETCH OF SURVEY

BOUNDARY SURVEY
SCALE 1"=20'

15' ALLEY
(NOT A PART OF)

9' ASPHALT PAVEMENT
100.00 (R/W)



* Shrub * Tree



MIAMI SHORES VILLAGE

APPLICATION FOR CERTIFICATE OF APPROPRIATENESS

NAME OF PROPERTY (If applicable): GODDARD

ADDRESS OF PROPERTY: 145 NE 94th Street, Miami Shores 33138

NAME(S) OF APPLICANT(S): Sharon K. Grosshart / Frederick L. Newman
(Note: If the applicant is a person other than the owner(s), evidence of that person's authority as agent other than the owner(s), evidence of that person's authority as agent must be attached to the application.)

CONTACT TELEPHONE NUMBERS: 305-757-1073 | _____

APPLICANT ADDRESS: SAME
(If different than property address)

PRESENT USE OF PROPERTY: Residence

INDICATE CLASSIFICATION OF PROPOSED WORK:

- MAINTENANCE OR REPAIRS RESTORATION REHABILITATION
- DEMOLITION NEW CONSTRUCTION
- OTHER (PLEASE EXPLAIN) Recover one awning; install 5 others; existing 3 and remove 5

DESCRIPTION OF THE PROPOSED PROJECT: To recover one awning with new material & to install five other awnings using same material. To remove 4 awnings from front house & 1 awning from back house.

- PLEASE PROVIDE THE FOLLOWING SUPPLEMENTARY INFORMATION:
- SITE PLAN (W/ DIMENSIONS) FLOOR PLANS (W/ DIMENSIONS) ELEVATION (W/DIMENSIONS)
 - LABELED PHOTOS SURVEY (WITHIN 5 YEARS) COLOR SAMPLE
 - MATERIAL SAMPLE OTHER _____

CERTIFICATION

UNDER PENALTY OF PERJURY, I (WE) CERTIFY THAT ALL INFORMATION IN THIS APPLICATION AND THE ATTACHMENTS HERETO IS TRUE AND CORRECT TO THE BEST OF MY (OUR) KNOWLEDGE AND BELIEF, THAT THE WORK FOR WHICH APPROVAL IS SOUGHT HEREIN IS BEING PROPOSED IN GOOD FAITH AND WILL BE PROMPTLY PERFORMED IN THE EVENT OF THE APPROVAL OF THIS APPLICATION AND THE GRANTING OF A BUILDING PERMIT, AND THAT I (WE) DESIRE THAT THIS APPLICATION BE GRANTED AND SUPPORT THE GRANTING OF THIS APPLICATION.

SIGNATURE OF APPLICANT(S): [Signature] DATE: 07/18/02

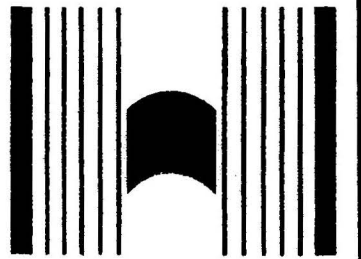
SIGNATURE OF OWNER(S): [Signature] DATE: 07/18/02
Frederick L. Newman DATE: 07/18/02



SOUTH ELEVATION - MAIN HOUSE



EAST ELEVATION - MAIN HOUSE



HOOVER

CANVAS AWNINGS

844 N.W. 9th Street
 Ft. Lauderdale, FL 33311
 (305) 945-3061
 Fax: (786) 242-6117

Date: 7/14/02

Scale: 3/16" = 1'-0"

Drawn by: Ted Linze

Approved by: T. LINZE

Rev.:

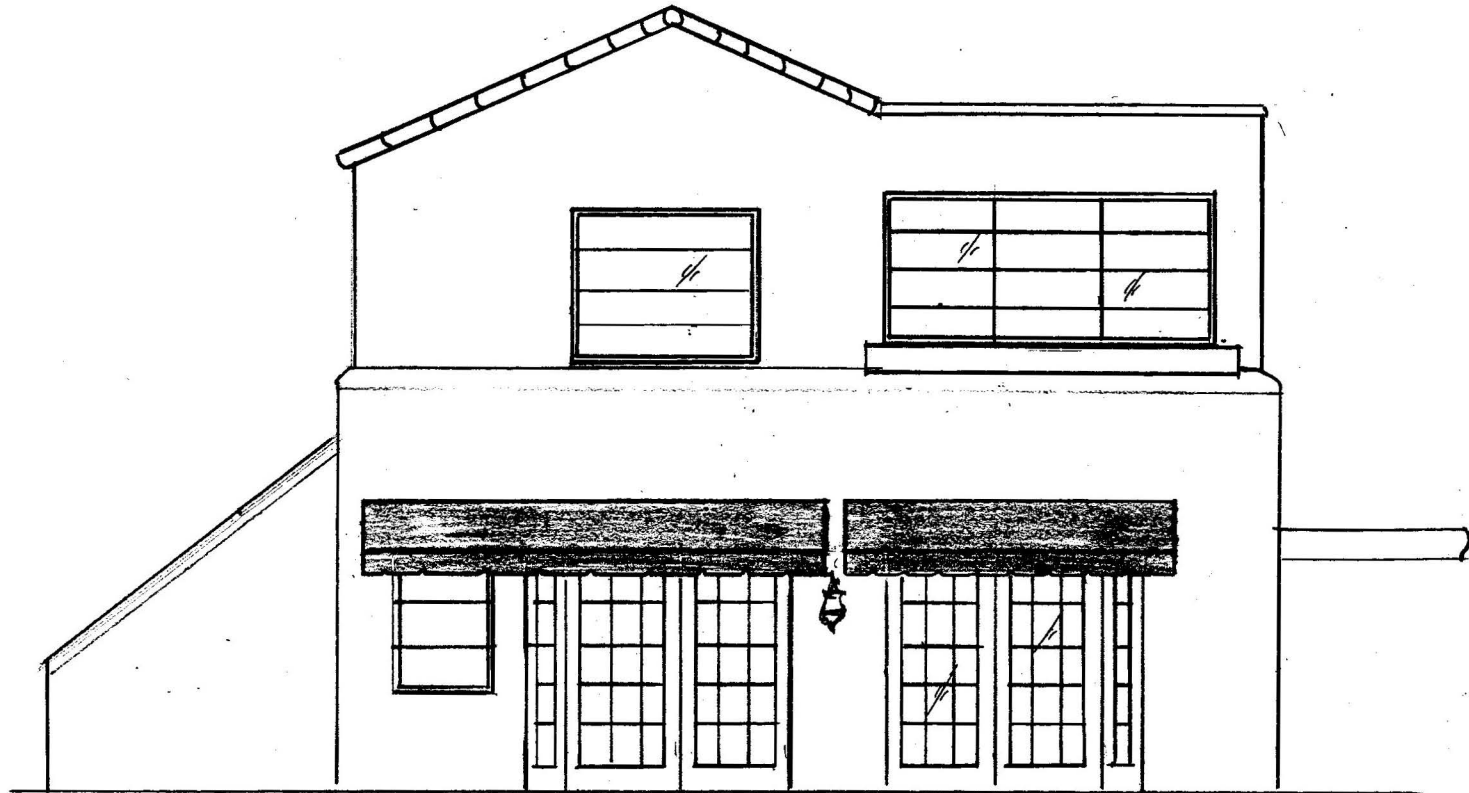
Project title: SHARON GROSSHART
 Address: 145 N.E. 94 ST.
 MIAMI SHORES, FL.

Description: ELEVATIONS OF MAIN HOUSE

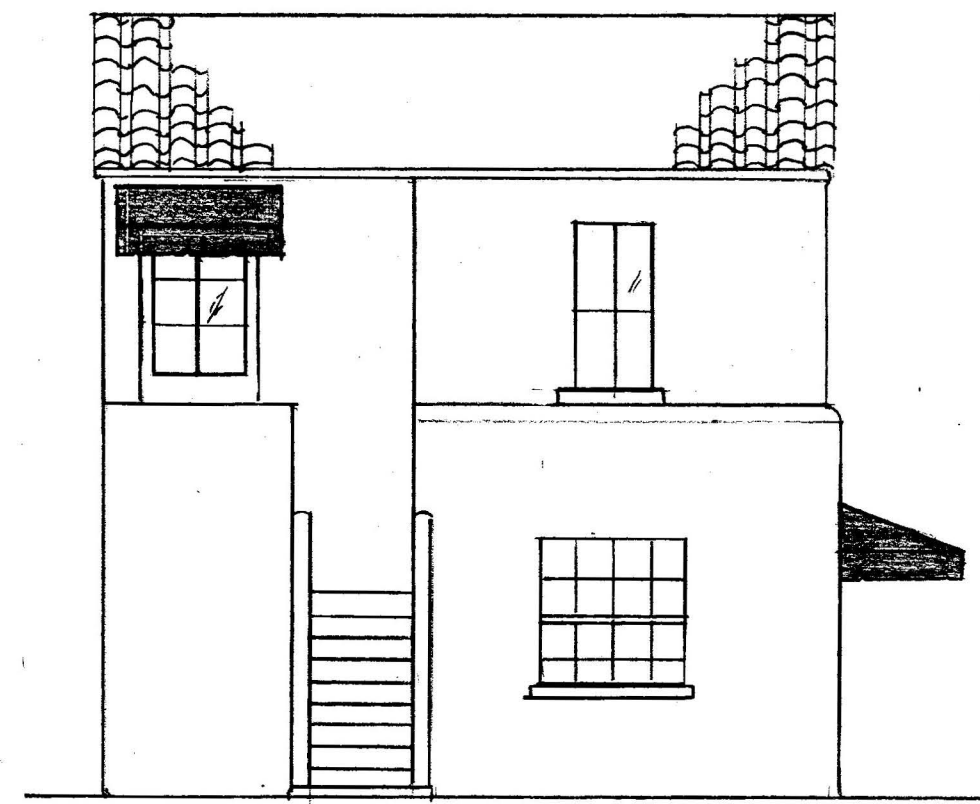
Engineer:
W. A. SUTHERLAND & ASSOC.
 12926 SW 133 COURT
 SUITE 'A'
 MIAMI FLORIDA 33186
 305-255-1948

CIVIL / STRUCTURAL
 P. E. 44353

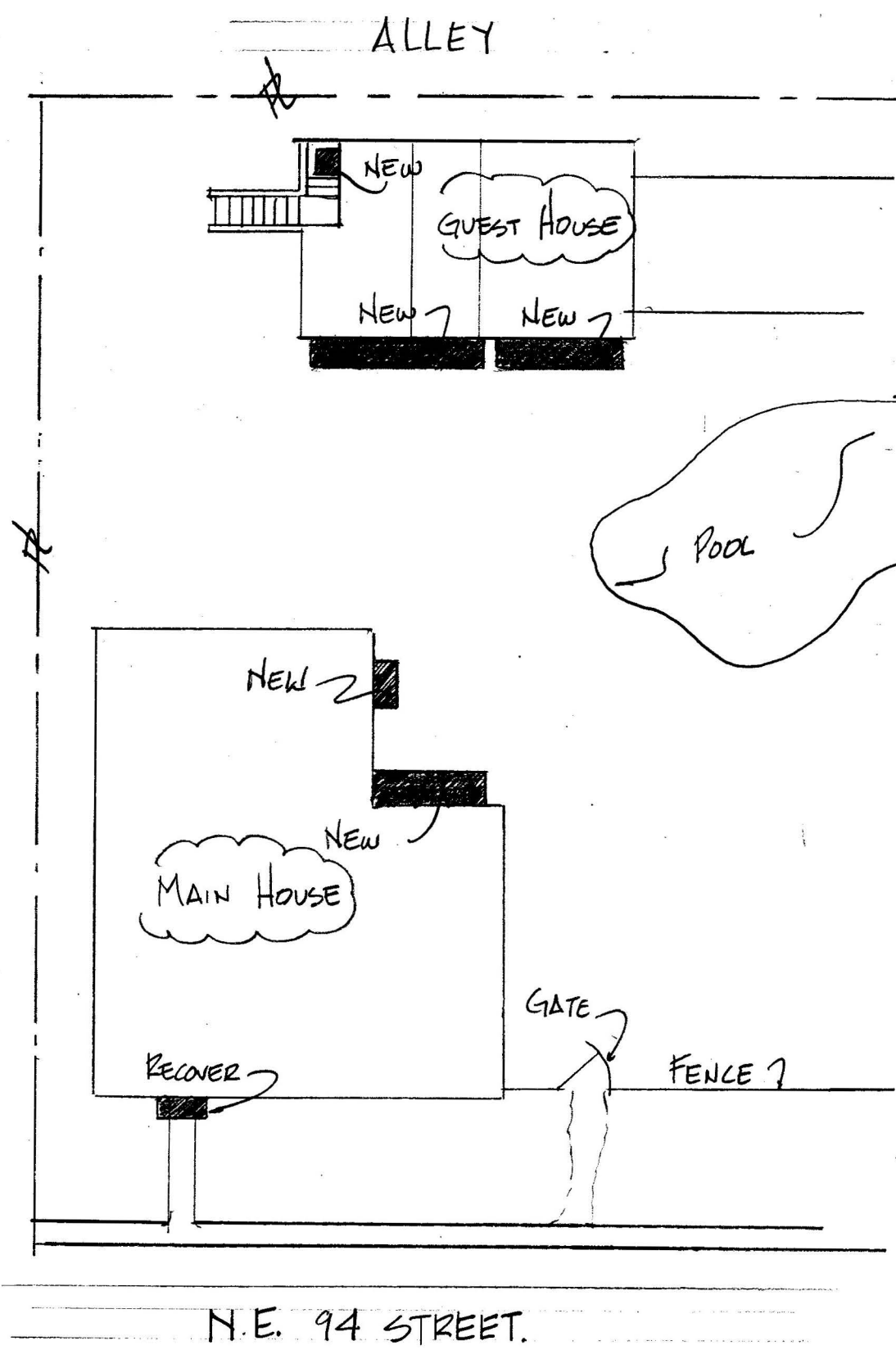
Sheet 1 of 2



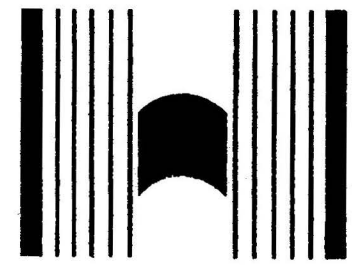
SOUTH ELEVATION - GUEST HOUSE



WEST ELEVATION - GUEST HOUSE



SITE PLAN - N.T.S.



HOOVER
CANVAS AWNINGS
 844 N.W. 9th Street
 Ft. Lauderdale, FL 33311
 (305) 945-3061
 Fax: (786) 242-6117

Date: 7/14/02
 Scale: 3/16" = 1'-0"
 Drawn by: Ted Linze
 Approved by: T. LINZE
 Rev.:

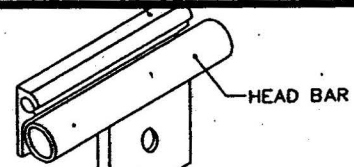
Project title: SHARON GROSSHART
 Address: 145 N.E. 94 ST.
 MIAMI SHORES, FL

Description:
 ELEVATIONS SITE PLAN

Engineer:
W. A. SUTHERLAND & ASSOC.
 12926 SW 133 COURT
 SUITE 'A'
 MIAMI FLORIDA 33186
 305-255-1948

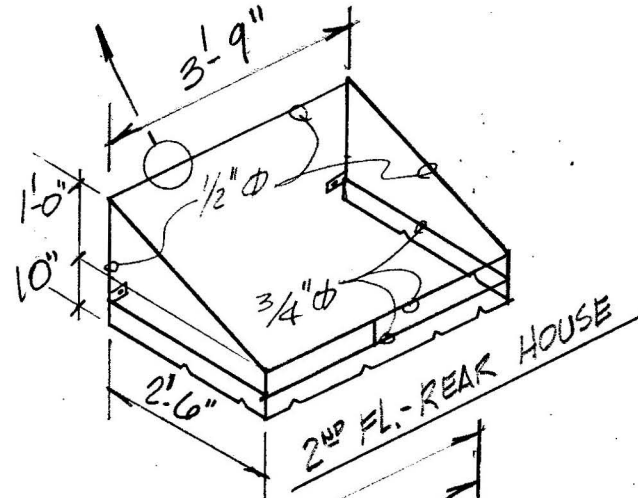
CIVIL / STRUCTURAL
 P. E. 44353

ALUMINUM TRACK (TO HOLD FABRIC)

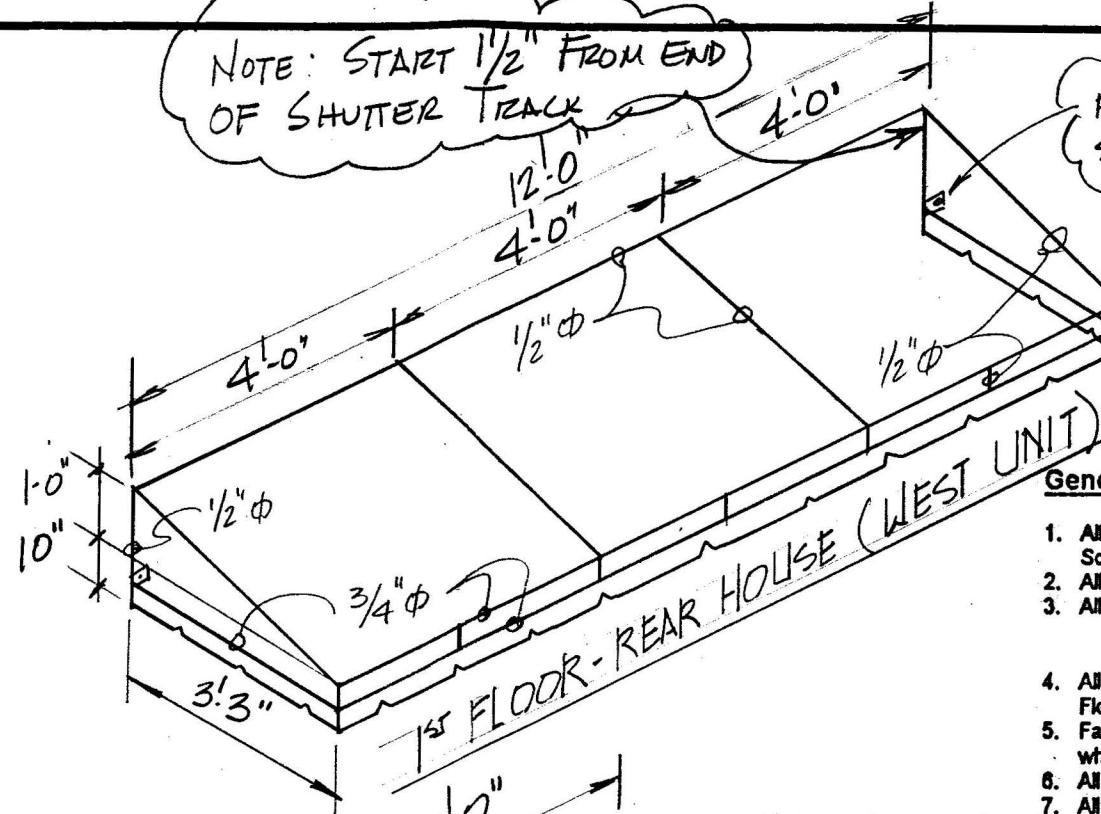


2" X 2" X 1/4" PLATE
FILLET-WELD TO PIPE
W/1/4" WELD, 3"-0" O/C
MAXIMUM; FASTEN TO WALL (CBS)
WITH 3/8" X 3" SLEEVE ANCHOR.

(TYP ALL UNITS)



2ND FL.-REAR HOUSE



NOTE: START 1/2" FROM END OF SHUTTER TRACK

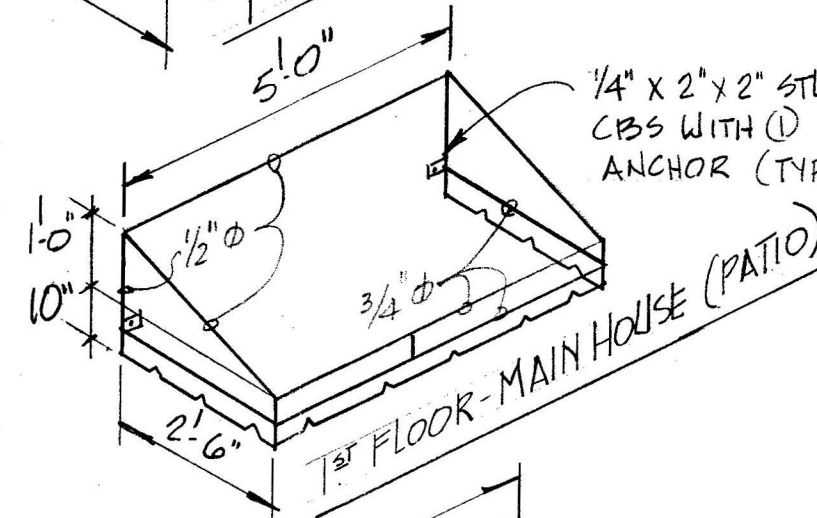
PLATE OUT THIS SIDE ONLY

1ST FLOOR-REAR HOUSE (WEST UNIT)

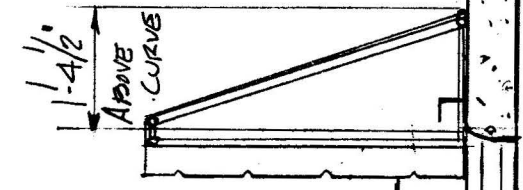
General Notes:

- All structural members to be A.S.A. Sch. 40 galvanized pipe (U.N.O.)
- All welds to comply with A.W.S. code.
- All connections to be fully welded (TYP.)
- All structures designed in accordance with Florida Building Code.
- Fabric Awings will require quick removal of the fabric when winds reach velocities in excess of 75 M.P.H.
- All structures have been designed using rational analysis.
- All structural members to be 3/4" (U.N.O.).

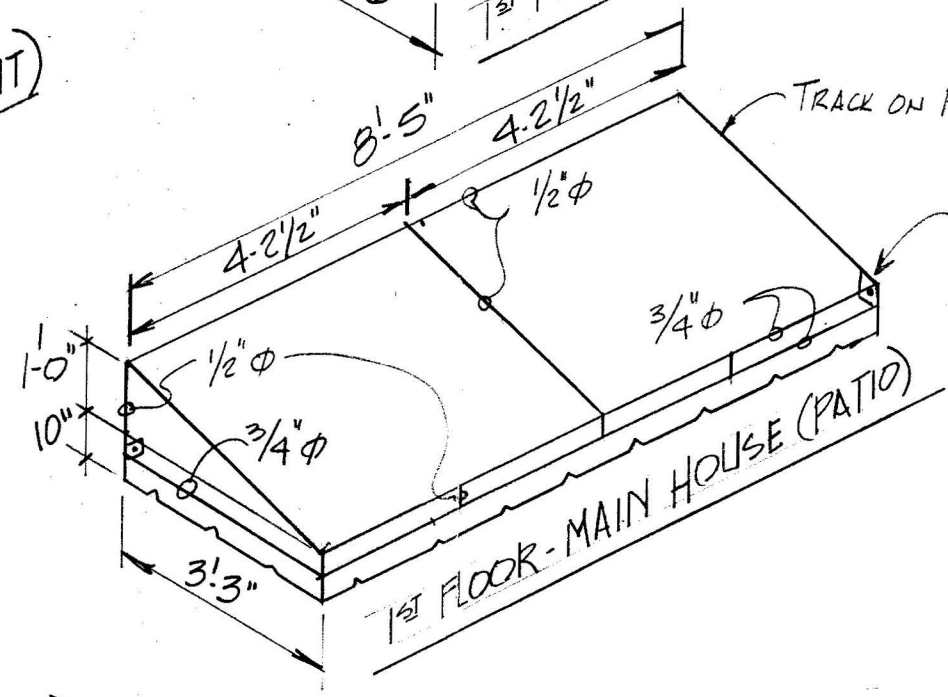
1/4" X 2" X 2" STL. PL. BOLTED TO CBS WITH (1) 3/8" X 3" SLEEVE ANCHOR (TYP OF 9)



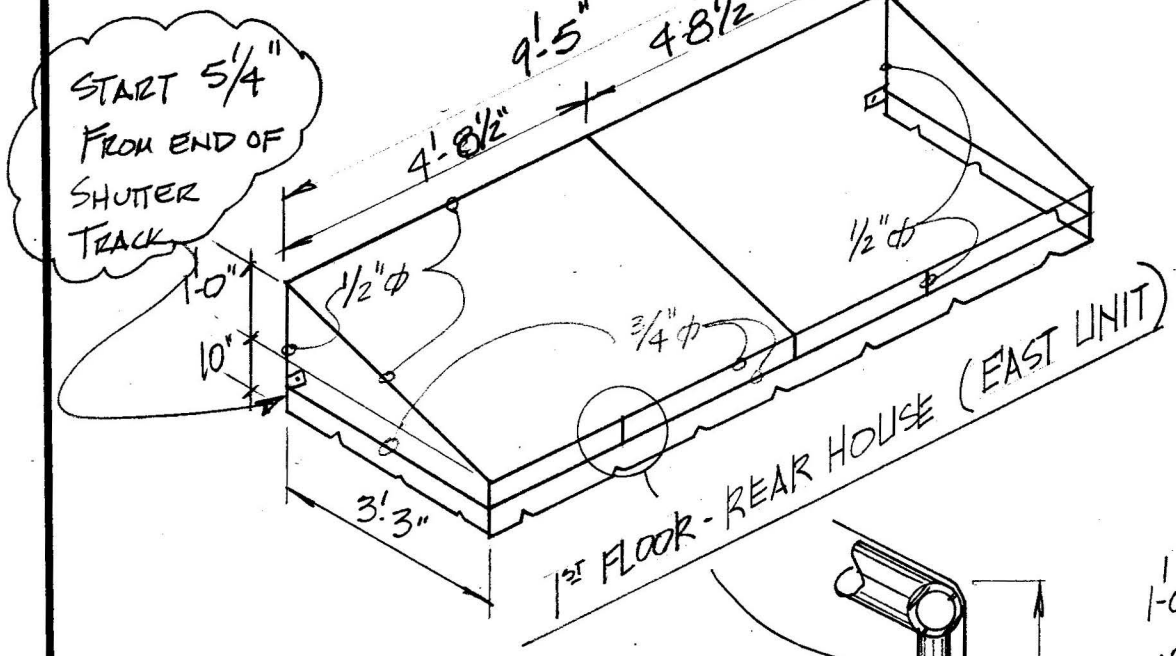
1ST FLOOR-MAIN HOUSE (PATIO)



1/4" X 2" X 4" STL. PL. BOLTED TO CBS WITH (1) 3/8" X 3" SLEEVE ANCHOR (TYP OF 1)

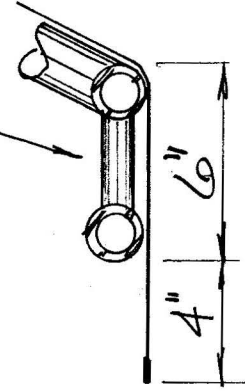


1ST FLOOR-MAIN HOUSE (PATIO)



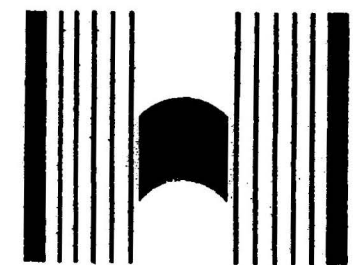
START 5/4" FROM END OF SHUTTER TRACK

1ST FLOOR-REAR HOUSE (EAST UNIT)



FRONT TRUSS DTL. (TYP)

SECTION C REAR HOUSE - 1/2" = 1'-0"



HOOVER
CANVAS-AWNINGS

844 N.W. 9th Street
Ft. Lauderdale, FL 33311
(305) 945-3061
Fax: (786) 242-6117

Date: 5/28/02

Scale: 3/8" = 1'-0"

Drawn by: Ted Linze

Approved by: T. LINZE

Rev.:

Project title: SHARON GROSSHART
Address: 145 N.E. 94 ST.
MIAMI SHORES, FL.

Description: ISOMETRIC, DETAILS, SECTION, NOTES

Engineer:
W. A. SUTHERLAND & ASSOC.
12926 SW 133 COURT
SUITE 'A'
MIAMI FLORIDA 33186
305-255-1948

CIVIL / STRUCTURAL
P. E. 44353

MIAMI SHORES VILLAGE

APPLICATION FOR CERTIFICATE OF APPROPRIATENESS

NAME OF PROPERTY (If applicable): Daniel V. Godard House

ADDRESS OF PROPERTY: 145 NE 94 Street

NAME(S) OF APPLICANT(S): Fred Newman / Sharon Grosshart

(Note: If the applicant is a person other than the owner(s), evidence of that person's authority as agent other than the owner(s), evidence of that person's authority as agent must be attached to the application.)

CONTACT TELEPHONE NUMBERS: 305-757-1073

APPLICANT ADDRESS: same
(If different than property address)

PRESENT USE OF PROPERTY: Residential

INDICATE CLASSIFICATION OF PROPOSED WORK:

- MAINTENANCE OR REPAIRS
- RESTORATION
- REHABILITATION
- DEMOLITION
- NEW CONSTRUCTION
- OTHER (PLEASE EXPLAIN) _____

DESCRIPTION OF THE PROPOSED PROJECT: Repairt as follows: Ben-Moore "Bayshore Beige" - Masonry Walls; Ben-Moore 3/c - 1580 - Doors & Iron fixture; and Behr "Lace Collar" - Masonry Trim & sills

PLEASE PROVIDE THE FOLLOWING SUPPLEMENTARY INFORMATION:

- SITE PLAN (W/ DIMENSIONS)
- FLOOR PLANS (W/ DIMENSIONS)
- ELEVATION (W/DIMENSIONS)
- LABELED PHOTOS
- SURVEY (WITHIN 5 YEARS)
- COLOR SAMPLE
- MATERIAL SAMPLE
- OTHER _____

CERTIFICATION

UNDER PENALTY OF PERJURY, I (WE) CERTIFY THAT ALL INFORMATION IN THIS APPLICATION AND THE ATTACHMENTS HERETO IS TRUE AND CORRECT TO THE BEST OF MY (OUR) KNOWLEDGE AND BELIEF, THAT THE WORK FOR WHICH APPROVAL IS SOUGHT HEREIN IS BEING PROPOSED IN GOOD FAITH AND WILL BE PROMPTLY PERFORMED IN THE EVENT OF THE APPROVAL OF THIS APPLICATION AND THE GRANTING OF A BUILDING PERMIT, AND THAT I (WE) DESIRE THAT THIS APPLICATION BE GRANTED AND SUPPORT THE GRANTING OF THIS APPLICATION.

SIGNATURE OF APPLICANT(S): [Signature] DATE: 08/01/02
[Signature] DATE: 8/1/02

SIGNATURE OF OWNER(S): [Signature] DATE: 08/01/02
[Signature] DATE: 8/1/02

MIAMI SHORES VILLAGE

APPLICATION FOR CERTIFICATE OF APPROPRIATENESS

NAME OF PROPERTY (If applicable): Goddard

ADDRESS OF PROPERTY: 145 NE 94th Street

NAME(S) OF APPLICANT(S): Frederick L. Newman ^{Sheron K.} Grossherst

(Note: If the applicant is a person other than the owner(s), evidence of that person's authority as agent other than the owner(s), evidence of that person's authority as agent must be attached to the application.)

CONTACT TELEPHONE NUMBERS: 305-757-1073 1 _____

APPLICANT ADDRESS : _____
(If different than property address)

PRESENT USE OF PROPERTY: Residence

INDICATE CLASSIFICATION OF PROPOSED WORK:

- MAINTENANCE OR REPAIRS RESTORATION REHABILITATION
- DEMOLITION NEW CONSTRUCTION
- OTHER (PLEASE EXPLAIN) Replace ⁽³⁾ Rotten Windows (out of Public View).

DESCRIPTION OF THE PROPOSED PROJECT: 3 windows 2nd floor of Back house rotted out - Replacing them - they are not in public view.

PLEASE PROVIDE THE FOLLOWING SUPPLEMENTARY INFORMATION:

- with awning proposal SITE PLAN (W/ DIMENSIONS) FLOOR PLANS (W/ DIMENSIONS) ELEVATION (W/DIMENSIONS)
 - LABELED PHOTOS SURVEY (WITHIN 5 YEARS) COLOR SAMPLE
 - MATERIAL SAMPLE OTHER specification of windows
- will bring to meeting + spec's for CERTIFICATION awning show site plan

UNDER PENALTY OF PERJURY, I (WE) CERTIFY THAT ALL INFORMATION IN THIS APPLICATION AND THE ATTACHMENTS HERETO IS TRUE AND CORRECT TO THE BEST OF MY (OUR) KNOWLEDGE AND BELIEF, THAT THE WORK FOR WHICH APPROVAL IS SOUGHT HEREIN IS BEING PROPOSED IN GOOD FAITH AND WILL BE PROMPTLY PERFORMED IN THE EVENT OF THE APPROVAL OF THIS APPLICATION AND THE GRANTING OF A BUILDING PERMIT, AND THAT I (WE) DESIRE THAT THIS APPLICATION BE GRANTED AND SUPPORT THE GRANTING OF THIS APPLICATION.

SIGNATURE OF APPLICANT(S): Frederick L. Newman DATE: 8/7/02
Sheron K. Grossherst DATE: 8/7/02

SIGNATURE OF OWNER(S): Frederick L. Newman DATE: 8/7/02
Sheron K. Grossherst DATE: 8/7/02

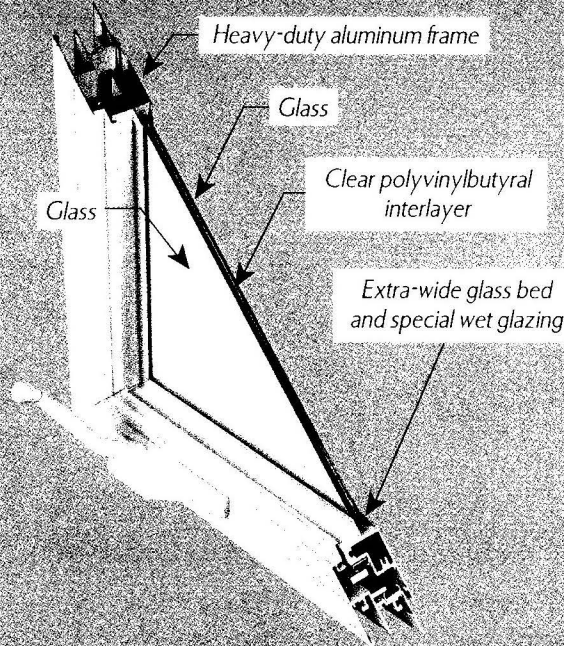
General Specifications

PERFORMANCE TESTING

- Passes Large and Small Missile Impact Tests
- Meets or exceeds all current AAMA/NWWDA 101 I.S.2 specifications
- Passes ASTM E987 for deglazing
- Passes ASTM E547/E331 for water resistance
- Passes Miami Dade Protocols PA201, PA 202, PA203
- AAMA 1032.5 for forced entry (except fixed lite architectural)

CONSTRUCTION

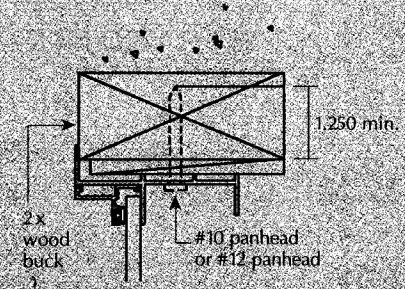
- Window screens have tubular rolled frames with 18 X 16 fiberglass mesh
- All products are wet glazed
- Flange-type frame for wood or masonry construction
- Unique lite glazing system allows upgrades to colonial at a later date
- Exterior glazed, structural, extruded aluminum glazing bead
- French doors have roll-formed aluminum glazing bead
- Baffled weep slots for efficient water evacuation



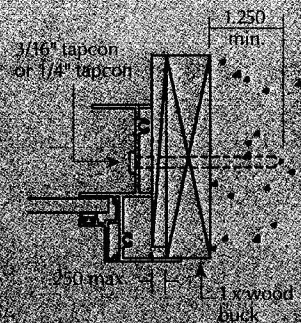
MATERIALS

- Low maintenance, heavy-duty 6063-T5 (minimum) aluminum alloy
- Nominal aluminum wall thickness is .062 (casement windows .050)
- Molded nylon anti-friction sash guides
- Heavy-duty die-cast sashlocks
- Fully-weather-stripped with polyester pile and vinyl
- Available in white or bronze ESP
- Corrosion-resistant hardware and fasteners with stainless steel options

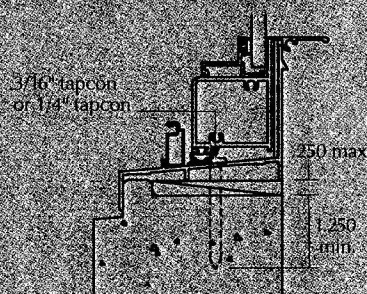
TYPICAL WINDOW INSTALLATION



TYPICAL HEAD



TYPICAL JAMB



TYPICAL SILL

EFFORTLESS HURRICANE PROTECTION

PGI WinGuard
IMPACT-RESISTANT WINDOWS & DOORS

Visibly Better.™



www.pgtindustries.com



Casement Windows

- Corrosion-resistant hardware
- Egress bar assembly lock options for egress or handicap requirements
- Washable hinge option for ease of cleaning

SIZE CHART & STANDARD COLONIAL LITE CONFIGURATIONS

COMMODITY

		X			XX	
WINDOW WIDTH	19 1/8	26 1/2	37	37	53 1/8	74
MASONRY OPENING	19 7/8	27 1/4	37 3/4	37 3/4	53 7/8	74 3/4
WOOD FRAME OPENING	18 1/4	25 5/8	36 1/8	36 1/8	52 1/4	73 1/8

26	26	25 1/4						
38 3/8	38 3/8	37 5/8						
50 5/8	50 5/8	49 7/8						
63	63	62 1/4						

MODULAR

		X			XX	
WINDOW WIDTH	24	30	36	48	60	72
MASONRY OPENING	24 3/4	30 3/4	36 3/4	48 3/4	60 3/4	72 3/4
WOOD FRAME OPENING	23 1/8	29 1/8	35 1/8	47 1/8	59 1/8	71 1/8

24	24	23 1/4						
36	36	35 1/4						
48	48	47 1/4						
60	60	59 1/4						
72	72	71 1/4						

*Masonry opening height sizes depicted are using precast sills.

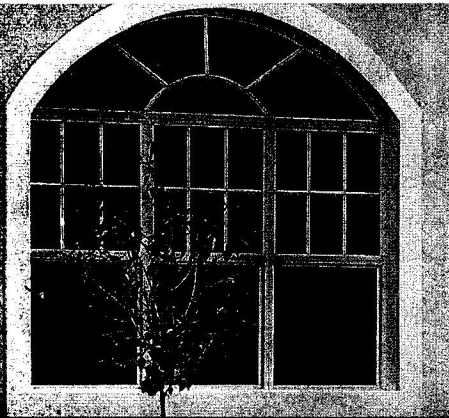
EFFORTLESS HURRICANE PROTECTION

PGT WinGuard
IMPACT-RESISTANT WINDOWS & DOORS

Visibly Better.™



www.pgtindustries.com



Single Hung Windows

- Bottom sash locks available for egress or handicap requirements
- Adjustable pre-tension spiral balances for easy lifting
- Nylon reinforcing wind clips for greater strength and wind rattle reduction
- Removable operating sash for easier cleaning

SIZE CHART & STANDARD COLONIAL LITE CONFIGURATIONS

	COMMODITY				MODULAR				
WINDOW WIDTH	19 1/8	26 1/2	37	53 1/8	24	32	40	44	48
MASONRY OPENING	19 7/8	27 1/4	37 3/4	53 7/8	24 3/4	32 3/4	40 3/4	44 3/4	48 3/4
WOOD FRAME OPENING	18 1/4	25 5/8	36 1/8	52 1/4	23 1/8	31 1/8	39 1/8	43 1/8	47 1/8

26	26	25 1/4									
			12	H32	22	32	2022	2822	3422	3822	4022
38 3/8	38 3/8	37 5/8									
			15	H33	23	33	2033	2833	3433	3833	4033
50 5/8	50 5/8	49 7/8									
			14	H34	24	34	2034	2834	3434	3834	4034
63	63	62 1/4									
			15	H35	25	35	2035	2835	3435	3835	4035
76	76	75 1/4									
			16	H36	26	36	2064	2864	3464	3864	4064

WINDOW HEIGHT

MASONRY OPENING*

WOOD FRAME OPENING

*Masonry opening height sizes depicted are using precast sills

EFFORTLESS HURRICANE PROTECTION



Visibly Better™



www.pgtindustries.com

MC0100030