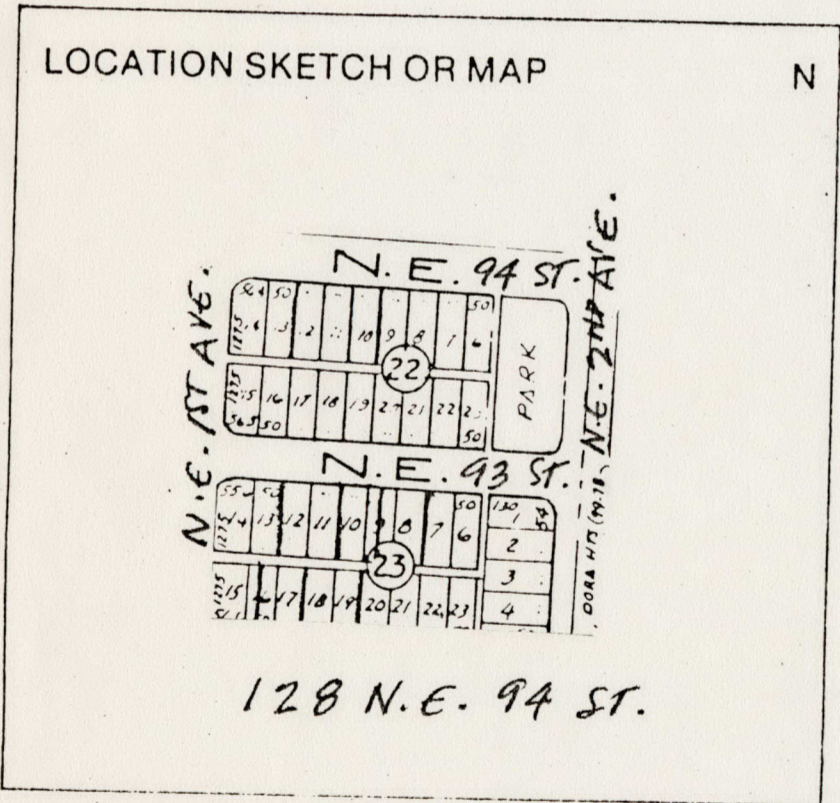


ARCHITECT Weed, Robert Law (Miami, Fl) 872 = =
 BUILDER --- 874 = =
 STYLE AND/OR PERIOD Mediterranean Revival 964 = =
 PLAN TYPE irregular;irregular 966 = =
 EXTERIOR FABRIC(S) rough textured stucco 854 = =
 STRUCTURAL SYSTEM(S) concrete block 856 = =
 PORCHES N,entry courtyard,brick wall connecting front wings,access N
 FOUNDATION: concrete block 942 = =
 ROOF TYPE: gable 942 = =
 SECONDARY ROOF STRUCTURE(S): gable,new addition,barrel tile 942 = =
 CHIMNEY LOCATION: W, exterior, end 942 = =
 WINDOW TYPE: wood casement, alum awning 942 = =
 CHIMNEY: CBS 882 = =
 ROOF SURFACING: barrel tile 882 = =
 ORNAMENT EXTERIOR: none 882 = =
 NO. OF CHIMNEYS 1 952 = = NO. OF STORIES 2 950 = =
 NO. OF DORMERS none 954 = =
 Map Reference (incl. scale & date) Miami Shores Village Plat 1980 809 = =
 Latitude and Longitude: " " " " " " 800 = =
 Site Size (Approx. Acreage of Property): LT1 833 = =



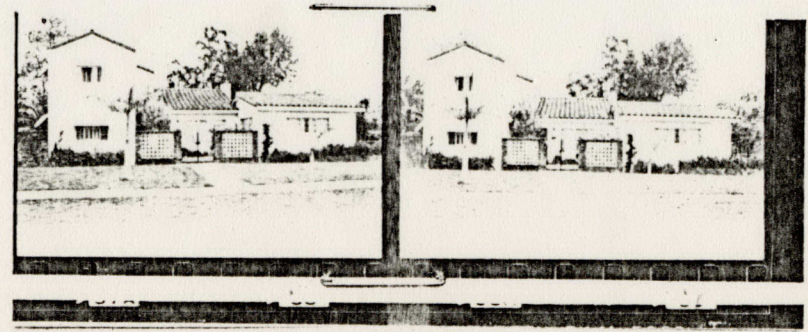
Township	Range	Section
53S	41E	1

UTM Coordinates: 812 = =

Zone Easting Northing 890 = =

Photographic Records Numbers 85N105HG38/85N105HG39 860 = =

Contact Print



CONTINUATION SHEET

Physical Description

Structure is a one- and two-story Mediterranean Revival residence. The original two-story structure on E has traditional Mediterranean Revival detailing. The addition on the W is in scale and harmony with the original wing but does not attempt to replicate the original design. A brick wall connecting the two sections created an entry courtyard on the N.

MSHPB USE ONLY

Replace windows 1951 (not in front of old section)
Addition 1968

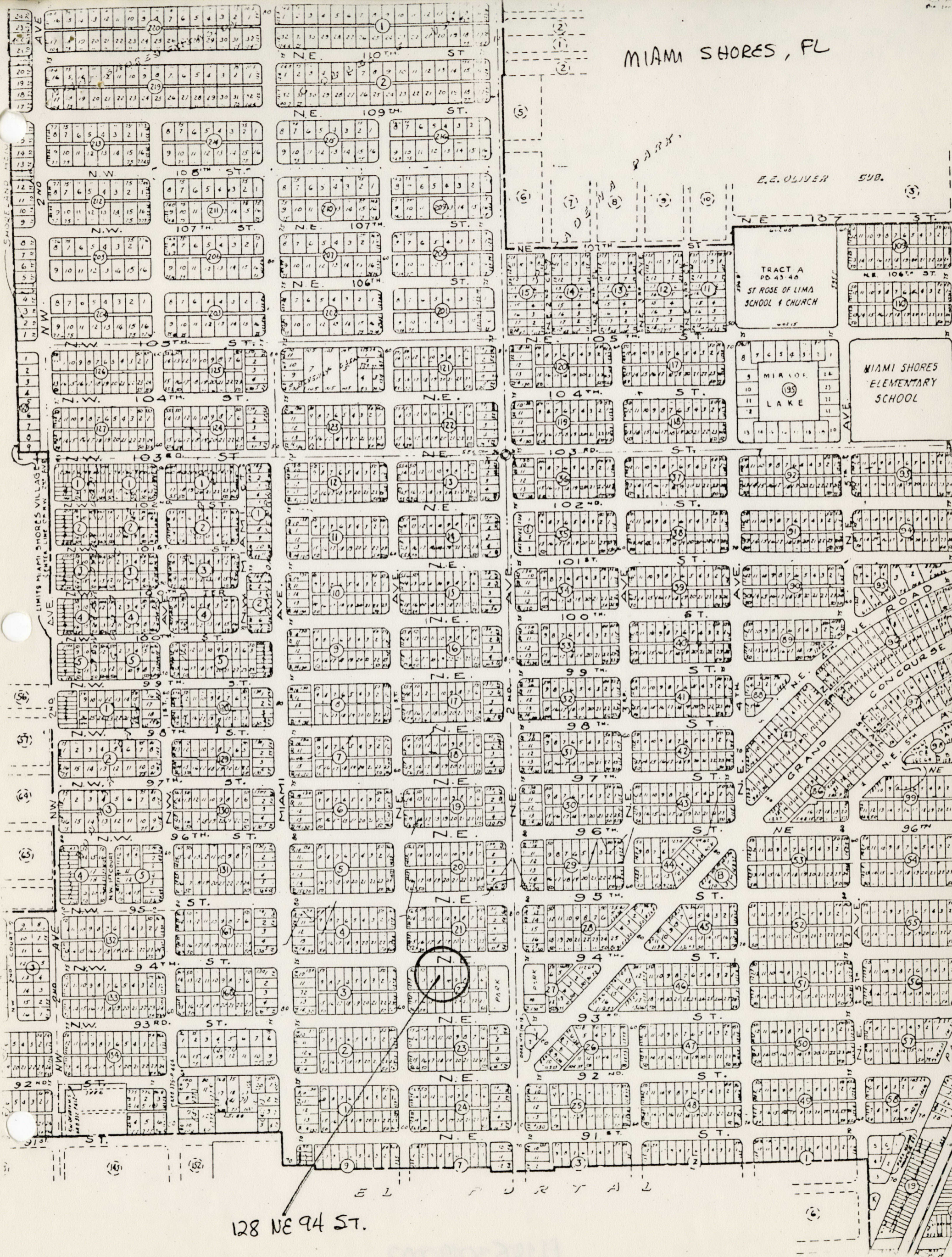
MIAMI SHORES, FL

E. Z. OLIVER SUB.

TRACT A
PD. 43-46
ST. ROSE OF LIMA
SCHOOL & CHURCH

MIRAGE LAKE

MIAMI SHORES
ELEMENTARY
SCHOOL



128 NE 94 ST.