

# Police grow pot, high in tower

Reporters from the International, on a routine story, found 25 plants of Cannabis Sativa growing out of old German cannon shells in the tower.

The plants, healthily growing in the makeshift greenhouse, were said to have grown wild atop the tower. "We didn't know what they were at first," said Campus Safety Department ex-chief Felon. "They did no harm to any of us and they looked kind of pretty up there. Anyways,

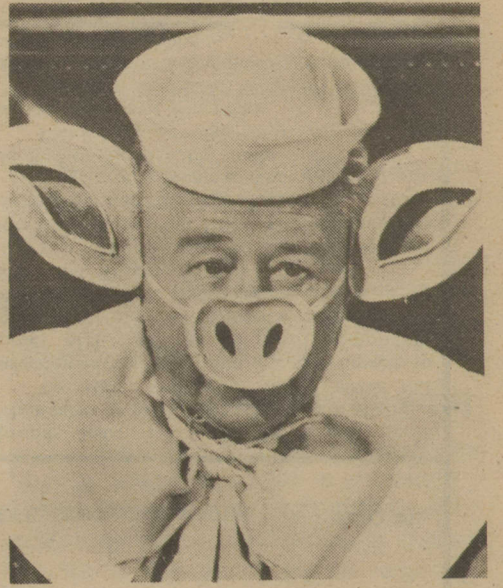
we needed them to stick the incense in the pots."

Some evidence was found that also led to their stash. When Metro officers opened a nearby watercloset they found along with two pounds of really fantastic, slow burning, Colombian Gold, some 25 cases of Pringles and Doritos and three six-packs of Dr. Pepper.

"The watercloset seemed like as good a place as any. It was only five feet from

the parking lot and had not been used in ages" an unidentified inside source said.

The tower has been used as headquarters by Campus Safety since 1972. The SGA, after receiving laboratory tests, has declared the tower a health hazzard and has found another location for the department. The landmark will be used as a test incubator by the SGA for some secret Strain of Panamanian Oregano.



EX-CHIEF FELON

"They did no harm to any of us and they looked kind of pretty up there."

## the international

Volume 2, Number 25

Tuesday, April 1, 1978

Florida International University

Miami, Florida 33199

# TUITION GOES UP 100% 15 HRS COST \$502.50

In a surprise move, the Board of Regents approved a proposal to increase tuition in the state universities.

The proposal cited travel by the board as one of the many reasons why this hike in tuition was necessary.

The more than 100% increase will bring the price of education for the average

15-credit-hour student to \$502.50.

Other reasons among those cited for the increase was the creation of 13 campuses to Florida International University.

"I think it's a real smart move for the BOR to take in this age of public growth," Harold Crosby, university president, said. "Now, Senator McDonald can go to our Pompano location and enjoy the facilities

offered at our new School of Fire Safety in the Smokey McDonald Building."

However, not everyone on campus was as peachy as the president about the move. Howard D'duck, SGA chairperson said, "It's a plot against all of us blacks. I am filing suit. With this new tuition increase, I will have no money left, not even enough to buy feather straightener!"

### Student Enrollment

1971 - 0

1978 - 13,000

1980 - 0?



Harold for Queen?

Pictured here as he declared his candidacy for Chairperson of SGA is student Harold F. Johnson. As one of his campaign promises, the president of the Association of gay students announced he will introduce legislation to change the title of chairperson to queen. "If they can do it so can we, sweetie," Harold was heard saying, with a flick of his wrist.

## Chickee Fire Fiend Found

Campus Safety officers have arrested FIU student Andre Tapanes, charging him with arson and conspiracy in the early Thursday morning blaze that destroyed two grass chickees located close to the Owa Ehan building.

As he was led away in handcuffs, Tapanes was quoted as saying "If you want Kentucky Fried Chickee, you will have to

visit me."

Tapanes was suspected of setting the blaze because he "always seemed to be at the scene of these chickee fires," according to Director of Campus Safety Timothy Felon. Tapanes said that he was covering the fire in his capacity as International entertainment editor. "That's entertainment!" said the gleeful Tapanes.

## FIU name-change approved SweetwaterU. here to stay

The Florida Board of Regents has approved a proposal to change FIU's name to Sweetwater University.

The controversial name change, which President Crosby has deemed long overdue, will take place as soon as the university's present supply of stationery runs out.

As the University nears the change, the list of adaptations needed to acclimate students grows longer. Some of the changes will include the placement of chickees in public places in Sweetwater; the school will adopt two new programs under the present School of Animal Husbandry.

The courses, which have been joyfully welcomed by Sweetwater residents, include such classes as "Wildlife Management" (a crash course for rowdy female tennis players) and "How To Tell a Stud From a Bum Steer 465" (which is self-explanatory.)

Administrators are divided about the decision. "I do declare! What will these campus radicals think of next," Judy Merit, Assistant to the Vice President, said. "Next thing you know, we will be

eating chittlins for lunch and frijoles for dinner."

James Sofa, former counselor from Technology said, "It's about time. It was long overdue. Variety is the spice of life; if they don't like it, let them eat cake, and that's all I have to say."

### INSIDE

- Crosby's third wife born today...
- Hamilton wins race for congress...
- SGA Senators lower their pay...
- Campus Strangler hangs one on, again...
- Fourth chickee burned; giant magnifying glass found at scene

# in brief

## Are the LSAT for \$2

For \$2.00 aspiring lawyers may avail themselves of a 30-minute briefing and a three and a half hour sample examination, and a two-hour review session. Instruction number 1: Bring \$2 and two number two pencils to the University of Miami, Room LC 120 in the Learning Center (the beige octagonal building near the bus stop, across from Doctor's Hospital) by 8:50 a.m. on April 8th. Return the following Saturday, April 15th, for the review session, from 9-11 a.m. Further instructions to follow.

## Freebie

Response to the tax assistance program by our accounting students has been excellent," stated Myron Lubbell, accounting professor and program supervisor.

In its fourth year, the Internal Revenue Service-approved program provides free tax assistance to those individuals whose gross income is under \$15,000. Over 40 senior accounting students are providing the assistance.

Lubell added that "a person partaking of this program, instead of a regular tax preparation service, will save between \$25 and \$50."

The public service program is still being offered at the following locations: Florida International University, Tamiami Campus, UH Forum on April 3-7 and 10-12 from 9 a.m. to 5 p.m.

## Retention program

### UBS topic

The United Black Students will meet Thursday, April 13th to discuss the various aspects of the new Minority Retention Program.

The seminar will begin at 12:30 p.m. in UH 213W. Refreshments will be served.

## Space talk

Donald Keys, President and Registrar of Planetary Citizens, will present two seminar/lectures in early April at FIU.

"How to Manage a Small Planet" will be discussed at 7:30 p.m., Thursday, April 6, in Room 140, University House.

"Mankind at the Turning Point: Cooperation or Catastrophe" will be presented at 12:30 p.m., Friday, April 7, in room 140 University House.

Planetary Citizens will conduct a registration drive on the FIU campus, April 5-7 in connection with the presentations. Membership is free and open to anyone.

## But that's Rio's Winter

Patricia B. Rambo, Assistant to the President at the University of Florida reports that one may "study Portuguese in exciting Rio de Janeiro this summer." Contact her at 168 Grinter Hall, U of F, Gainesville, Florida, if interested.

## Interns Wanted

The Federal Correctional Institution in South Dade will be having full-time paid internships in a federal internship program this summer.

The program will offer practical experience in some phase of federal activity related to their individual career field.

The majority of positions will be in Washington D.C. (metropolitan area) but some may be located in other areas.

For further information, contact Dr. Marques at 552-2323.

## Swamp biggie

"HIDDEN WORLDS OF THE BIG CYPRESS SWAMP", a film by Richard Kern, will be presented at 7:30 p.m., Tuesday, April 4, in UH 140,

For more information please contact the Joint Center for Environmental and Urban Problems, 552-2536.

## Brave new world?

An important international symposium is scheduled for April 6, 7 and 8 at the Tamiami Campus of FIU. The title of the symposium—"Towards Integration of Science and Technology with Development Needs of the Less Developed"—describes its focus. Sponsored by FIU in cooperation with the Institute of Social and Economic Research at the University of the West Indies, the Symposium will draw speakers and participants from Brazil, Mexico, Peru and Costa Rica, as well as the West Indies and the United States. FIU students are encouraged to attend and participate. Further details about the symposium are available from Dr. Thomas (Chairperson) at FIU's Department of Economics.

## Go Baroque

The Contemporary Baroque Trio, a popular group of chamber music professionals in this area, are presenting a free program Thursday April 6 at 7:30 p.m. at FIU's Tamiami Campus.

# Bendix reaffirms 'State of Art'

Dr. Reinhard Bendix's visit to FIU reaffirmed what is the state of the art of the professional scholar. This was evident throughout his lecture, "Foundations of Nationalism", and the seminar that followed. Both were taken from his latest book, "Kings or People: Power and the Mandate to Rule", which will be released in the summer.

This ten-year work comprises a social historiography of Europe, the

United States, Russia and China from the 15th and 16th Centuries. Through the interrelated aspects of their social and political development, Dr. Bendix deals with the notion of nationalism and the transference of ideas.

Dr. Bendix's visit was sponsored by the Sociology/Anthropology Society, with the support of the SGA. It is hoped the students of FIU will continue this tradition of inviting distinguished and honored lecturers such as Dr. Bendix.

# Bachelor by weekends

Students who are majoring in liberal studies can earn their Bachelor degree while attending only weekend courses in a new program beginning in the spring quarter.

"It is designed for those individuals who do not have the time to attend classes during the week," stated Brian L. Peterson, liberal studies chairperson and program director.

Administered by the Department of Off-Campus Credit Courses, the weekend degree program allows

participating students to earn up to 10 hours a week by attending special courses offered on Saturday mornings and afternoons.

"Completion of the program would take nine quarters, acknowledged Peterson, "instead of the regular six quarters that is needed for a degree seeking student."

Students may earn up to 15 credit hours in the program for life/work experience." Credits will be assigned accordingly.

# IF YOU DON'T HAVE TO READ THIS ANNOUNCEMENT READ THIS ANNOUNCEMENT.

FLORIDA INTERNATIONAL UNIVERSITY WILL PRESENT  
A COMPREHENSIVE SPEED READING PROGRAM

APRIL 8 - MAY 20, 1978 (7 weeks)

Reading Development, a speed reading course, will be taught by Mr. Earl Wallace, former Florida State Director of Instruction for Evelyn Wood Reading Dynamics. Mr. Wallace has taught literally 1000's of students to read 3 to 10 x's faster.

Students taking the course at FIU last quarter reported increases of up to 10 x's with comprehension. Improvement to 3, 4 or 5,000 words per minute is not uncommon and one student actually learned to read 12,000 words per minute with excellent comprehension!

Unlike most speed reading courses, there is no additional reading required - you will learn to read faster in your own textbooks. Reading Development does not use any so called "standardize" readings. ANYTHING you can read now, you can learn to read 3-10 x's faster.

It is guaranteed you will read at least 3 x's faster with the same or better comprehension or your tuition will be refunded.

The Reading Development course includes a lesson on how to study efficiently and a lecture on "test wiseness", information all students can use.

The course will meet once a week for seven weeks, each lesson lasting 3 hours. One hour of homework is required each day.

Usually the fee for this course is \$225 per student (as compared to Evelyn Wood's \$425). However, in order to make this course more available to FIU students and interested persons, the fee will be reduced to \$100.

If learning to read 3-10 x's faster is important to you, let the Department of Conferences know as soon as possible.

### CLASS SCHEDULE (select one)

101 - Monday - April 10	2:30 p.m. - 5:30 p.m.	PC 536
102 - Tuesday - April 11	2:30 p.m. - 5:30 p.m.	PC 536
103 - Thursday - April 13	2:30 p.m. - 5:30 p.m.	PC 536
104 - Saturday - April 8	10:00 a.m. - 1:00 p.m.	DM 194
105 - Saturday - April 8	3:00 p.m. - 6:00 p.m.	DM 194

For additional information and night schedule contact: Mr. Earl Wallace - 448-0265

**Editorial**

# Amendments require student input

Though candidates for four out of five Presiding Board posts are running unopposed, the upcoming SGA election retains its importance, chiefly because of the five proposed amendments to the SGA Constitution.

Students will have the chance to adopt or reject the amendments.

**PROPOSITION ONE** is the most important of the five, simply because it gives the student body the power to make future changes in the Constitution, without Senate participation. Because it is the key to full direct participation in the government students pay for, we strongly recommend a vote **for** Proposition One.

**PROPOSITION TWO** (changing "Chairman" to "Chairperson") is a "house-keeping amendment" which merely updates the five-year-old Constitution. Vote **for** this amendment.

**PROPOSITION THREE**, despite its good points (such as elimination of the no longer existant Dean of Student Services) would give the Senate full budget powers without committee approval (now required). Funds could be allocated with little deliberation. For this reason, we recommend a vote **against** Proposition Three.

**PROPOSITION FOUR** is very obscure as to meaning and effects. It seems to take the question of "dissolving the Constitution" out of the hands of the student body, contradicting Proposition One, which gives the students more power. Vote **against** this proposal.

**PROPOSITION FIVE** will provide an extra step to the Student Government ladder on each campus, thus giving both the Tamiami and North Miami Campus equal access to budget decisions fit for their programming needs. We recommend a vote **for** this proposition.

This is the first time the Constitution of the Student Government Association may be amended and student input to these decisions is of the upmost importance.



"MAYBE THE HEALTH FOOD DIET I RECOMMENDED COULD USE A COUPLE JUNK FOOD ADDITIVES!"

# letters



Editor:

Re the article "The Politics of Food in America": your politics are "right-on," (to borrow from your New Age Newspeak). However, your nutritional biochemistry begs for informed clarification.

To wit, "balanced nutritional protein" cannot be produced from carbohydrates no matter how "staple" or "complex". The essential amino acids (those unable to be synthesized by the human body) are contained in large quantities in animal products (including buffalo).

The Indians, in fact, far from being the passive gathering of roots, nuts and berries as portrayed in the article, developed an entire civilization devoted solely to the procurement of meat.

Archaeological evidence indicates that they liked it red and raw, instinctively realizing the nutritional, hemoglobin iron content of freshly-

sliced slabs.

The decline of the once flourishing Hindu Civilization coincides exactly with the introduction to that subcontinent of the vegetarian-Buddhist lifestyle.

Their intellectual deterioration has now progressed so far that they are not even capable of recognizing the abundant source of protein omnipresent in the form of their "sacred" cow.

Another anthropological case in point is the Native American Eskimo who includes in his exclusively carnivorous repertoire the consumption of copious quantities of raw narwhal blubber, sperm whale testes and polar bear placentae (a highly relished springtime treat).

Far from being "overweight, anxious, depressed, fatigued and ill," as the article would imply, these hearty people are capable of herculean efforts over vast tracts of pack-ice at temperatures at which your average vegetarian would freeze stiff as a carrot.

We suggest that a double portion of roast beef au jus or steak and kidney pie would supply the vital nutrients so obviously lacking in the diet of your fuzzy-thinking contributors.

Joseph W. Armour  
Frederick J. Swift  
Congress for Articulating Nutritional Needs Including Beef and Livestock (CANNIBAL)

Editor:

The article, "Bias charged over V.P. posts," that appeared in the March 14 issue of the International was very upsetting, to say the least!

The Black Employees Association gave a vote of "no confidence" when President Crosby permanently appointed (white) Dr. Joseph Olander to the position of executive vice president and (white woman) Dr. Judy Merritt as vice president for student affairs.

I am a member of the Student Government, and I distinctly remember President Crosby attending one of our meetings and asking our views on passing up the search & screen process in this one case. Rose Brown, a senator, wrote up a piece of legislation stating "We have all worked with Joe Olander

and Judy Merritt, they are doing outstanding jobs, however, this one case should not set a precedent to do away with search & screens."

President Crosby points out in the recent article, "People fail to look at the whole picture." This is so true—other people can base their opinions on this article...I am basing mine on experience in working with these two individuals, white, black or whatever; they are good. This is a pity that some people view this as "discrimination." It will be a greater injustice to see the administration be forced into "reverse discrimination" and hire personnel solely on their skin color and ethnic background!

Linda Kavanagh  
Student Government Scribe

THE INTERNATIONAL THE INTERNATIONAL THE INTERNATIONAL

The INTERNATIONAL  
is  
looking for  
Writers  
Photographers  
Graphic Artists  
Advertising Salesmen  
(salaries available)

Apply at INTERNATIONAL offices  
UH 212 A  
or phone Ext. 2118

**International**  
Florida International University  
Tamiami Trail, Miami, Fla. 33199  
(305)552-2118  
Editor..... Kathy Lindsay  
Managing Editor..... Philip Lane  
News Editor..... Kathy Hassall  
Graphics ..... Richard Seigny  
Entertainment..... Andy Tapanes  
Advertising Manager . Albert Hoskin  
Business Manager..... Lior Shalev  
Sports..... Martin Svensson  
The International is an independently funded newspaper published for the students of Florida International University. All views expressed are not necessarily those of the university's administration or faculty. The International's office is open Monday through Thursday from 9 a.m. to 4:30 p.m., Fridays 9 a.m. to 12 noon. The office is located in University House 212-A.

THE INTERNATIONAL THE INTERNATIONAL THE INTERNATIONAL

THE INTERNATIONAL THE INTERNATIONAL THE INTERNATIONAL

THE INTERNATIONAL THE INTERNATIONAL THE INTERNATIONAL

# Open up and say ahh!

VANESSA TURNER  
Contributor

A dental plan is now available to both full and part-time students, and their dependents.

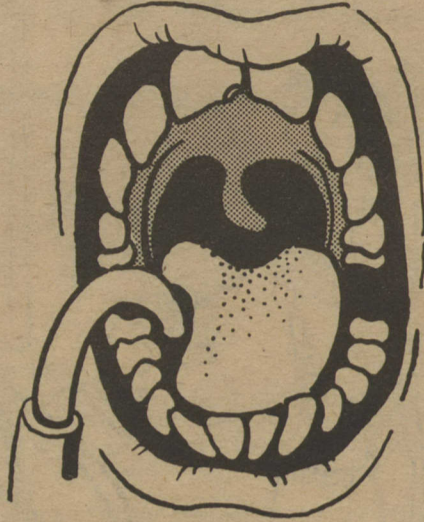
Bruce Friedlander, representative for the student dental plan in Florida commented that Dental Health Services of Florida, a non-profit corporation, is working through the Florida State Insurance Commission to provide quality dental care at reduced rates.

Office visits, examinations, cleanings, fluoride treatments and x-rays are provided at no charge. "Procedures such as root canal, gum treatment and even orthodontics are provided at greatly reduced, pre-determined rates," Friedlander said.

Coverage cost for DHS is \$30 per subscriber, with family coverage costing \$60. Forty per cent of orthodontists fees, up to a maximum of \$500, are covered.

Friedlander said that other colleges and universities in Florida are planning to become a part of DHS. Students at the following institutions are recipients of DHS: University of Miami, Nova, West Florida, Barry and Prospect.

There are over 60 offices throughout Dade, Broward and Palm



Beach Counties with over 100 dentists participating.

"If you are not satisfied with your DHS plan your money will be refunded," Friedlander stated, adding the stipulation, "If you cancel your membership within 11 months after applying, you will be refunded 65 per cent of the membership charge, less the customary and reasonable dentists' fees for any services rendered."

According to Friedlander, the goal of the DHS is "to restore you and your family to good oral health and keep you that way for the rest of your lives."

Brochures describing the services are available in UH 211 and UH 310.

# Writing Lab opens at North Campus

A writing lab to assist North Miami Campus students with any type writing concern or problem has been established and is located in the Trade Center Building, Room 101. Hours for the lab during the first half of spring quarter will be Tuesday and Thursday Evenings from 6 p.m. to 9 p.m. and Saturdays from 9 a.m. to 1 p.m.

Students are encouraged to bring a sample of written work with them to the lab. Faculty and staff members can refer students to the lab and special referral forms for this purpose are available from the various Dean's offices at North Miami Campus or from Student Development in TC 110.

# New award to honor leadership

BILL SOPKO  
Contributor

A new student award to be presented at the FIU Annual Awards Ceremony in June has been created by the Division of Student Affairs.

"Our new award will be presented to the student selected by a special evaluation committee who best exemplifies leadership in either the community or the school," said Lillian Kopenhaver, Assistant to the Vice President of Student Affairs. Named the Leadership and Service Award, it will be given to a person who has, "in a sense, given himself to the school."

To qualify for the award, the student must be enrolled here and must be a degree-seeking student. "This will eliminate special students who are here just to take a few courses," said Kopenhaver.

"It is really a super award," said Kopenhaver. "The Leadership and Service Award will be our most prestigious award."

One of the main differences is that there is no emphasis put on academic achievement for the new award. A minimum grade point average has been required for the Outstanding Student Award.

"The Division of Student Affairs has planned to keep a permanent plaque on display in the UH Building, and each year the name of the Leadership and Service Award winner will be engraved," said Kopenhaver, adding "I think this award is necessary and hope it will encourage other students to exhibit leadership."

## CO-OPERATIVE Education Workshop

The Co-Op Education Department at Florida International University will be sponsoring a Faculty/Student/Employer Workshop on Wednesday, April 5, 1978 from 9 a.m. to 4:30 p.m. Highlights of this workshop will be a talk by Dr. Paul Dube, Director of the Center of Cooperative Education at Northeastern University and a luncheon prepared and served by students from Hospitality Management at FIU. Employers from government and private agencies throughout Dade and Broward Counties, faculty members and staff persons from FIU and Cooperative Education students will be participating.

DO PAPERS GIVE YOU A PAIN?  
IS YOUR WRITING A DISASTER?  
NEED HELP WITH ORGANIZATION,  
GRAMMER AND PUNCTUATION?  
COME TO THE WRITING LAB IN DM 338 FOR FREE TUTORING.

Monday: 6:00 p.m. - 9:00 p.m.  
Tuesday: 6:00 p.m. - 9:00 p.m.  
Wednesday: 6:00 p.m. - 9:00 p.m.  
Thursday:  
Friday: 6:00 - 9:00 p.m.

(Tamiami Campus)

**TEST PREPARATION**  
532-4848 Irwin  
665-3647 W. Katz  
**GRE  
LSAT  
GMAT  
MCAT**

**ELECTIONS COMING UP!**  
please vote.

### FORUM MADNESS

The University Forum will be April 13 (Thurs.) at 12:30 in UH 150. Bring your ID card and meet your new representatives.

\*\*\*\*\*

New organizations on campus:  
—FIU Fancy Footers  
—FIU Weight Lifting Club  
—Young Republicans of FIU

Alpha Phi Omega  
Largest service fraternity is seeking undergraduates. For more information contact:

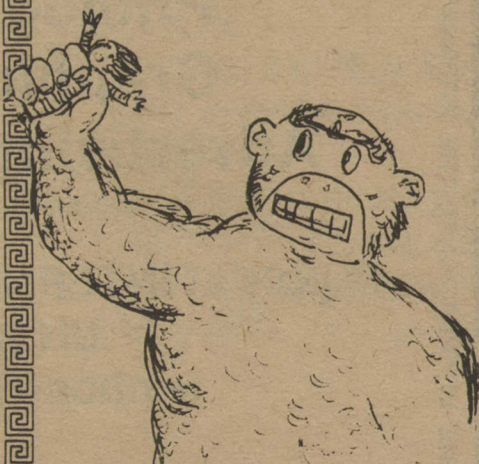
Tom 552-2456  
Mollie 666-8389

# SGA NEWS

## movie of the week

The 1976 version of  
**king kong**

Thursday 12:30 and Friday 7 p.m. in UH 140.



### ELAN

Yearbooks Selling Out Fast!  
Buy one now!  
\$3.00

Call Rose at Ext. 2121

### ELAN

Students interested in attending the Second Annual FSA Lobbying Conference, April 29 to May 1, come to UH 150 on April 5 at 11 a.m.

### Pollsters needed

Spring election, April 10 to 12.  
\$2.65/hour. Contact Ext. 2121 in UH 310.

## INTERNATIONAL CAREER?



A representative will be on the campus

FRIDAY  
APRIL 21, 1978  
to discuss qualifications for advanced study at  
**AMERICAN GRADUATE SCHOOL**  
and job opportunities in the field of

### INTERNATIONAL MANAGEMENT

Interviews may be scheduled at  
CAREER PLANNING &  
PLACEMENT DEPARTMENT

AMERICAN GRADUATE SCHOOL  
OF INTERNATIONAL MANAGEMENT  
Thunderbird Campus  
Glendale, Arizona 85306



# DROP/ADD PROCEDURES FOR SPRING QUARTER, 1978

## 1st Week March 28 - April 3

**ADD** The permission and signature of the Instructor is required.

**DROP** The signature of the Instructor is required.

## 2nd Week April 4 - April 10

**ADD** A. The permission and signature of the Instructor is required for each course with the notation on the back of the original as to why the student is registering late.

B. The approval of the appropriate Departmental Chairperson and Academic Dean.

**DROP** A. A (DR) drop card is to be submitted with course information but no signature is required.

B. Inform the Instructor that the course is being dropped.

C. The grade of DR will be assigned by Admissions and records.  
NOTE: Students will be charged and must pay for any course dropped after April 3, 1978.

## 3rd Week April 11 - April 17

**ADD** A. The permission and signature of your Instructor is required for each course with the notation on the back of the original indicating the reasons for late registration.

B. The approval and signature of the appropriate Departmental Chairperson and Academic Dean.

C. The signature of the Vice President, or Associate Vice President of Student Affairs, PC 524.

**DROP** A. A (DR) dropcard is to be submitted with course information but no signature is required.

B. Inform the instructor that the course is being dropped.

C. A grade of DR will be assigned by Admissions and Records.

NOTE: Student will be charged and must pay for any course dropped after April 3, 1978.

## 4th through 6th Week

### April 18 - May 8

**ADD** No adds permitted.

**DROP** A. A (DR) drop card is to be submitted with course information but no signature is required.

B. Inform the Instructor that the course is being dropped.

C. The grade of DR will be charged and student must pay for any course dropped after April 3, 1978.

**AFTER THE APPROPRIATE SIGNATURES HAVE BEEN OBTAINED, ALL DROP/ADD CARDS MUST BE TURNED IN TO OFFICE OF ADMISSIONS AND RECORDS FOR VALIDATION.**

## IMPORTANT REGISTRATION AND FEE DATES

### SPRING Quarter 1978

**APRIL 3**

*Last day to drop courses or withdraw from the University without incurring financial liability for all officially registered courses.*

**APRIL 3**

*Last day to drop with fee refund.*

**APRIL 3**

*Last day of official drop/add period.  
(After this date, all courses dropped will receive an appropriate grade.)*

**APRIL 10**

*Last day to pay fees without a \$25.00 late fee.*

**MAY 8**

*Last day to drop a course with a grade of DR.*

# Flash!! Flash!! DEADLINE FOR APPLYING

**SPRING**

# QUARTER GRADUATION



**APRIL 17 1978**

STUDENTS APPLYING AFTER THIS DATE  
WILL HAVE TO GRADUATE THE FOLLOWING  
QUARTER.

# sports



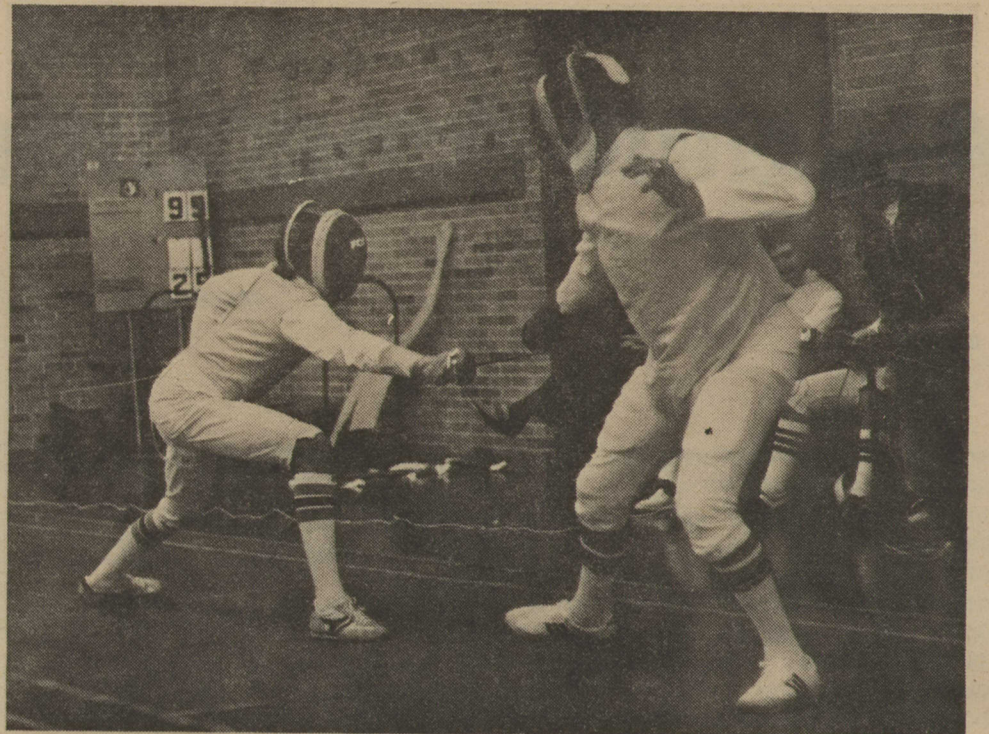
## FIU Baseball Stats as of March 28, 1978

### BATTING

	AB	H	R	RBI	HR	AVG.
Ruffler	79	34	17	27	5	.430
Snyder	85	35	20	22	4	.412
Becker	48	19	12	15	6	.396
Campbell	72	27	17	8	1	.375
Jendra	76	27	23	13	5	.355
Siemon	50	16	11	9	2	.320
Jordan	50	13	11	6	0	.260
Bouloosa	19	4	4	5	0	.211
Jacoby	64	13	10	17	2	.203
Fernandez	65	13	14	4	0	.200
Karr	65	13	11	7	2	.200
Kubit	5	1	1	1	0	.200
Rixie	6	1	1	0	0	.167

### PITCHING

	W	L	IP	H	R	ER	SO	ERA
Curry	1	0	9	8	5	0	1	0.00
Ledduke	4	1	50.2	41	18	15	26	2.66
Araneo	1	2	36	30	26	14	23	3.50
Hodge	3	3	41	44	25	19	21	4.17
Rixie	3	0	15.1	16	11	11	6	6.46
Pero	1	1	29	50	32	21	18	6.52



Carol Martin photo

## FIU Fencing Team; en guard!

American fencer Roy S. Tinney, while describing the sport, once declared: "Fencing demands greater powers of analysis than any other sport. It has been and always will be enjoyed by a highly intelligent minority."

At FIU, this minority consists of Coach William Benton, Captain Barbra Higgins, Pamela Culshaw, Christine Salterio and Carol Jean Martin, the Florida State Women Champions, and Men's Captain Mark Forrest, Claudio DeiRicardi, Carlos Casas and Mark Dakur.

This year, the women's team has taken 5 first place finishes, 3 seconds and 2 thirds. The men have also fared well, capturing 3 firsts, 4 seconds and 3 thirds against four Florida rivals.

Florida State, the University of Florida, Miami-Dade Community College and Brevard C.C. are the only other colleges in the state who sponsor a team.

Electronically scored, fencing competition is conducted on a copper surface that protects the athletes. At a typical tournament, the fencer averages about 20 "bouts", five minutes each consisting of five touches. A point is scored every time you touch your opponents target area.

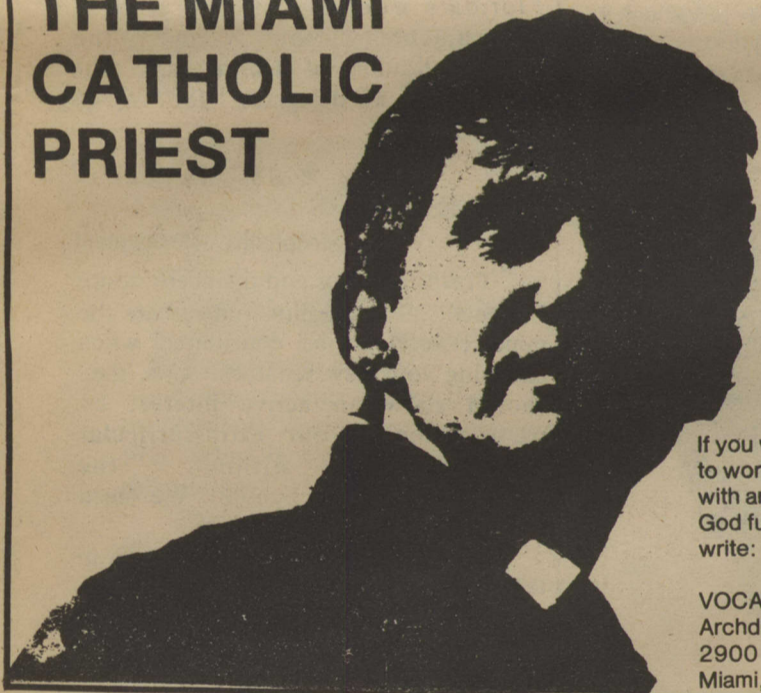
To win a bout, you must touch your opponent's target area five times. The fencer who wins the most bouts is the winner of the competition.

Fencers employ three types of weapons: the foil, sabre and epee. Each differs in its touch area and use.

In addition to the physical side of the sport, intelligence plays an equal role.

"With each opponent you face, your strategy must be different," said Captain Higgins. "You've got to be able to adjust and compete at her particular level."

## THE MIAMI CATHOLIC PRIEST



If you want to work with and for God full time, write:

VOCATIONS OFFICE  
Archdiocese of Miami  
2900 S.W. 87th Ave.  
Miami, Florida 33165

## HOLISTIC HEALTH



### Natural Hypnotherapy Individual or Group House Calls Made

Psychological Counselling; Drug and Alcohol Therapy; Meditation; Acupressure; Sex Counseling (Incl. change from gay orientation); Weight Reduction; Energy Balancing; Decompression Therapy; Gestalt Body Awareness; Crisis Management and Much More!

### Behavior Modification Hypnosis Center

10871 Caribbean  
Miami, Fla. 33157  
235-8088

# Is it sick to love a pen?

Is it crazy to love marker pens that give you the smoothest, thinnest line in town...and feel so right in your hand? Is it mad to worship pens with clever little metal "collars" to keep their plastic points from getting squishy?

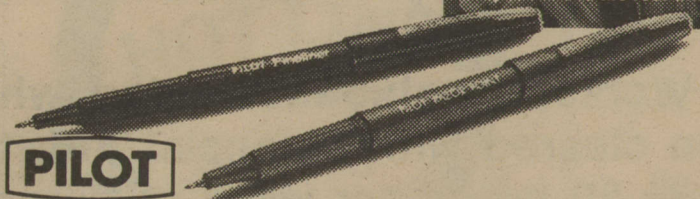
Not if the pen is a Pilot marker pen. Our Razor Point, at only 69¢, gives the kind of extra-fine delicate line you'll flip over. And for those times you want a little less line, have a fling with our fine point 59¢ Fineliner. It has the will and fortitude to actually write through carbons.

So, don't settle for a casual relationship. Get yourself a lasting one, or two, to have and to hold...at your college book store.

Pilot Corp. of America, 30 Midland Ave., Port Chester, New York 10573.



"With Jeff, it was only infatuation, but this is the real thing!"



**PILOT**  
fineline marker pens

*You'll never write so fine*

WEEK'S SPORTS CALANDER

April 3-5  
Women's Golf - Univ. of Miami Invitational.

April 4  
FIU Baseball vs. Eckerd College in St. Petersburg

Women's Tennis vs. Palm Beach Jr. College in Lake Worth.

Softball vs. Univ. of Miami at UM. 4:00

Men's Tennis vs. Memphis State at FIU 2:00

April 7  
FIU Baseball vs. Univ. of Miami at FIU.

Softball: Miami-Dade South Invitational at M-DCC South.

April 8  
Softball: Miami-Dade South Invitational.

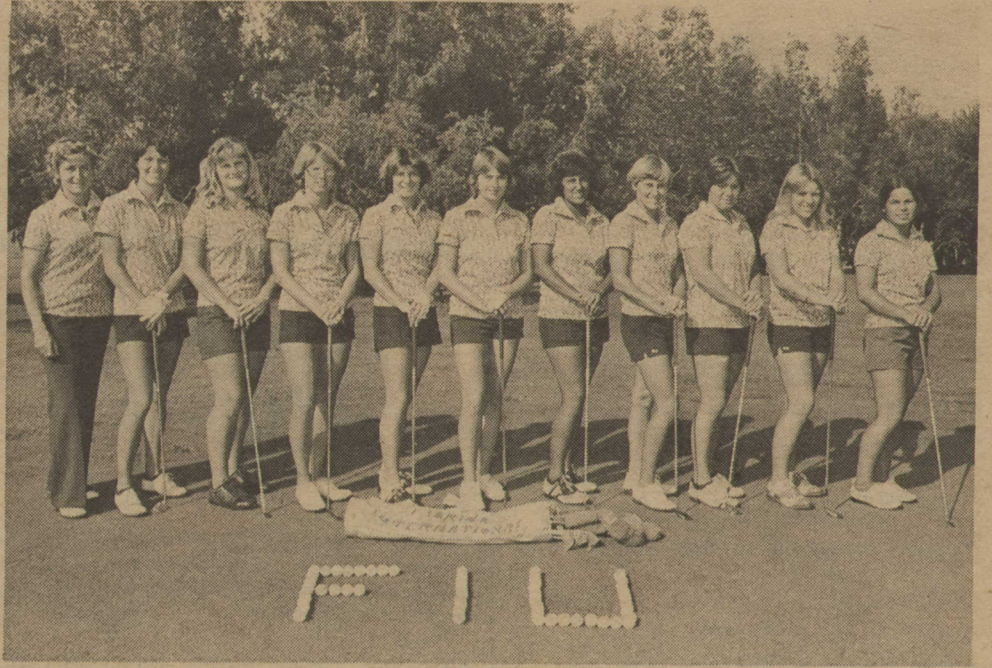
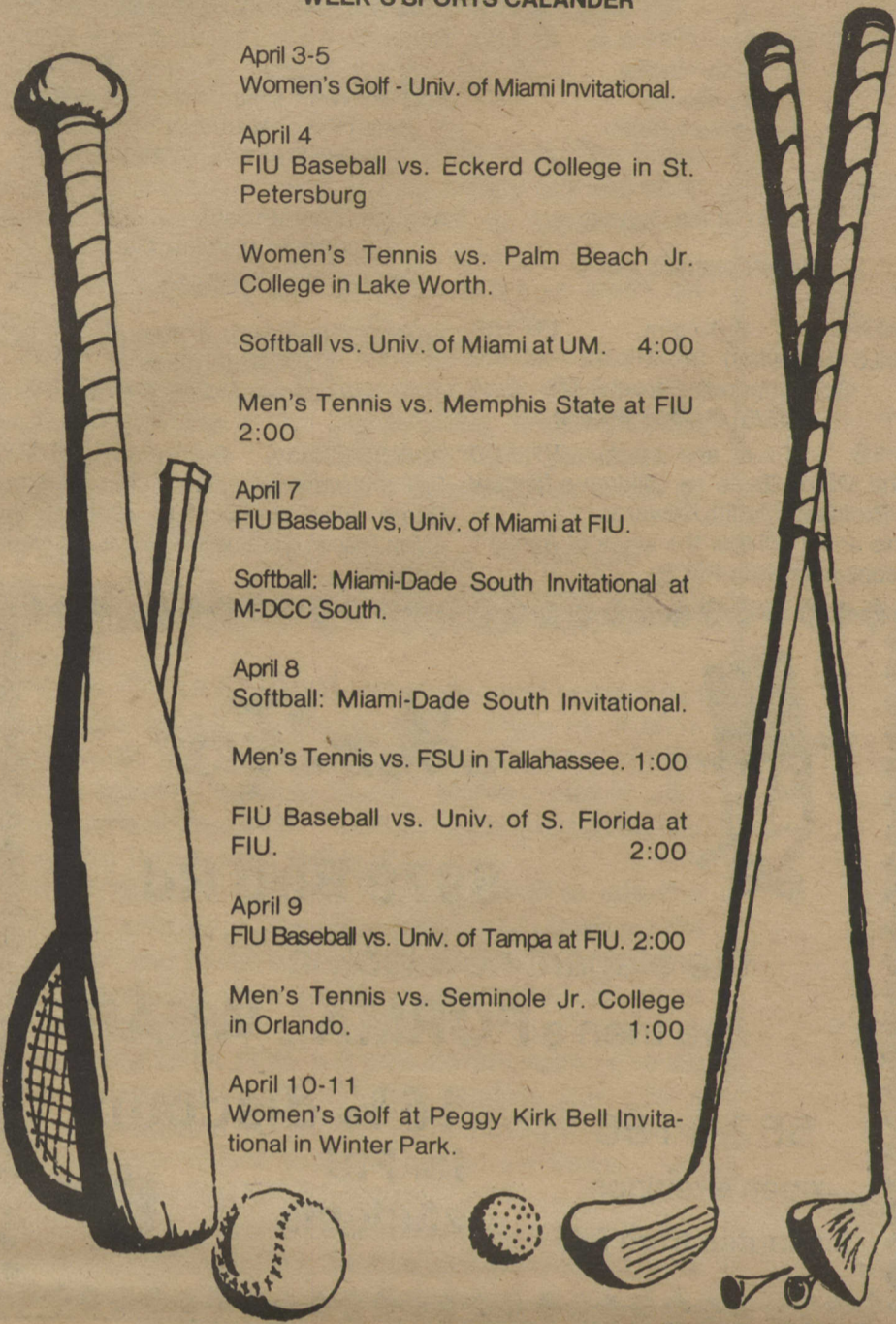
Men's Tennis vs. FSU in Tallahassee. 1:00

FIU Baseball vs. Univ. of S. Florida at FIU. 2:00

April 9  
FIU Baseball vs. Univ. of Tampa at FIU. 2:00

Men's Tennis vs. Seminole Jr. College in Orlando. 1:00

April 10-11  
Women's Golf at Peggy Kirk Bell Invitational in Winter Park.



## Women's golf 6th in nation

Miami—Golf Week Magazine, golf's only weekly news magazine, has picked the FIU Women's Golf squad as the number six team in the country according to its first national poll released March 17.

The Sunblazers received 73 total points, which included two first place votes, to rank behind number one Miami (115 total points), Arizona State (109), Florida (83) and Southern Methodist (78).

Throughout the year, the Lady Blazers have been led by Becky Pearson, a senior from North Branch, Minnesota, who most recently won the Florida Atlantic University Classic last month in West Palm Beach.

Jeanne Hartman, a junior from Bellevue, Ohio, Mary Duggan, a senior from Plantation, Florida, Meredith

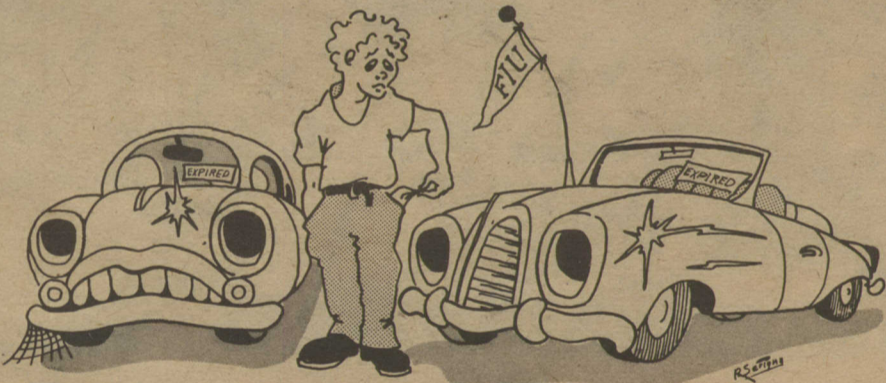
Marshall, a junior from Marion Station, Pennsylvania, Denise Lavigne, a senior from Montreal, Canada, and Brenda Rego, a senior from Kunia, Hawaii, have also fared well against tough Florida Competition.

Golf Coach Mary Dagraedt has had nothing but praise all season for her squad. "Without a doubt, we are as good as anyone in the country and with our great depth and balance, I consider us to have an excellent chance at winning the National title in June."

Another area golf coach termed the FIU Women's team as "sneaky good."

The Lady Sunblazers will next try to improve their national standing when they compete in the University of Miami Invitational to be held at the Melreese Golf Course in Miami, April 3 through 5.

## AUTO INSURANCE HAVE YOU DOWN?



**P.I.P. IS ALL YOU NEED  
UNDER FLORIDA LAW  
IMMEDIATE AUTO INSURANCE  
CERTIFICATES TO COMPLY WITH  
NEW JAN. 1, 1978 LAW**

**CHARLES ADLER  
INSURANCE AGENCY, INC.**  
Reputable Insurance Agency for 22 Years  
We can help solve your Insurance blues  
Special Service to FIU Students, Faculty Staff

**"NO FAULT" \$25 TOTAL  
AUTO INSURANCE FROM ONE YEAR  
AUTO LIABILITY FROM \$210. ANNUAL IN DADE COUNTY PREMIUM**

- MOTORCYCLE FROM \$27.
- YOUNG DRIVERS SPECIAL DISCOUNT
- LOW DOWN PAYMENTS

WE HAVE EVERY FORM OF INSURANCE  
HOMEOWNERS • BOATS • JEWELRY • BUSINESS • APARTMENTS  
CONDOS • LIFE • HOSPITALIZATION • FLOOD  
SERVING ALL OF DADE AND BROWARD COUNTY

70 N.E. 167 St.  
N. Miami Beach  
945-4335

**OPEN 6 DAYS  
SE HABLA ESPANOL**

11515 NW 27 Avenue  
Across from Miami-Dade North  
685-0371

OPEN 9A.M.-9P.M. six days



## SPRING QUARTER ON-CAMPUS RECRUITING INTERVIEWS

April 10th—May 26th

- Tenneco Oil
- Western Electric
- Enfield's 3M Business
- Colegio Karl C. Parrish
- Slonin & Associates
- A.B. Dick Co.
- Xerox Corp.
- American Bankers Life
- American Graduate School of International Management
- Del Monte
- K-Mart Apparel
- U.S. Air Force
- Kenneth Leventhal & Co.
- John Hancock
- Southeast Banks
- F.W. Woolworth Co. (Woolco)
- Burrough's Corp.
- J. Byrons
- J.C. Penny Life Insurance
- Scientific Systems Services

All students who wish to interview must establish a registration file with the Career Development and Placement Department, UH 340.



# classified

**HAPPY HOUR** in the RAT daily, Mon. to Thurs. 2-4 p.m., Fri. 2-6 p.m. 35¢ beers.

**Do it in the Rat**

RATHSKELLER T-shirts only \$3.50. Purchase at the Rat.

**International Beer of the Week**

This week **Ritter Brau** from West Germany.

**SPECIAL**

Irish Green Beer, this week only 25¢.

**AUDITION NIGHT**

The Rat is looking for entertainers to play on Tues. and Thurs. during the up coming qtr. Auditions will be held on Thursday, April 6 at 8 p.m. in the Rat.

**RESUME-INTERVIEW GUIDE**

Do them right the first time. \$1.00 Werner Dept. 45, Box 3700041 Miami, Fla. 33137.

Female student looking for girl to share condominium in Coconut Grove. Call 444-2029.

**WANTED:** Interested Aerospace Individuals to work on **BLIMP PROJECT**. Please contact Ali Eshghi at 271-5075, evenings.

1971 V.W. Super Beetle. Great condition, radials, flare fenders, etc. Coco 595-7242.

The FIU Environmental Action Group will meet Thursday, April 6, in UH 212D.

**TUTORING GERMAN**

Individually or in groups, all levels, phone 445-6097.

# sqoc

**PART TIME**

Writer (1) and Artist (1) of company literature positions available; candidates must have creative writing and art ability respectively. Salary is open and hours are flexible.

Investigator Trainee needed, flexible schedule. Rate of pay \$3.00 per hour.

Retail store seeks Rarts Clerk, \$3.60/hr. Monday-Saturday, 10 a.m. to 2 p.m.

**FULL TIME**

Customer Support Representative opening; experience not necessary. Need degree in Marketing or Business Administration. Salary is \$850 per month plus bonus.

Staff Auditor needed to do corporate auditing. Degree in Accounting necessary, experience not required. Salary is negotiable.

Community Health Center seeks an Occupational Therapist Assistant. Will consider candidates with Associate or Bachelors' degree who have experience in occupational therapy or related field. Salary is \$298.55 biweekly.

**CAMPUS INTERVIEWS**

April 13  
ENFIELD'S 3 M BUSINESS  
(all majors)

April 14  
COLEGIO KARL C. PARRISH  
(Education Majors)

For more information, stop by your Career Development and Placement Department, UH 340.

**MUSIC CONCERTS**

April 6 - Thursday - 7:30 p.m. - AT 100  
Contemporary Baroque Trio

April 11 - Tuesday - 7:30 p.m. - AT 100  
Faculty Recital  
"My Worlds"  
Dr. Joseph Rohm

April 27 - Thursday - 7:30 p.m. - AT 100  
Arioso String Quartet

**PERFORMING ARTS**

April 4-7 2:00 p.m. VH 100  
April 6 (Thursday) 7:30 p.m. At 100  
Contemporary Baroque Trio  
(PACE/SGA/AMS Series)

April 8 11 a.m. and 2 p.m. VH 100  
"The Mirror Game" a children's fantasy  
by Professor Judith Edwards  
(This show will tour the week of April 11  
in conjunction with PACE)

April 11 (Tuesday) 8:00 p.m. AT 100  
Faculty Recital - Dr. Joseph Rohm

April 18 (Tuesday) 8:00 p.m. AT 100  
Robin Turetsky, Voice; Senior Recital

April 26 (Wednesday) 10:00 a.m. AT 100  
Helen Baker Memorial Scholarship  
Music Scholarship Auditions

April 26 (Wednesday) 7:30 p.m.  
Bayfront Collegiate Chorale  
Bandsheli Director - Dr. McElfresh

April 27 (Thursday) 7:30 p.m. AT 100  
Miami String Quartet  
(PACE/SGA/AMS Series)

April 28 (Friday) 8:00 p.m. AT 100  
FIU International Artist Series and the  
Dante Aleghieri Society present the  
Italian Pianist Caramella in an all Schubert  
Concert.



*Mr. Tux*

**8979 Bird Rd.**

the elegant new look in  
fine men's **FORMAL WEAR.**

552-1156  
open evenings  
5 minutes from FIU

**15% discount**  
for FIU  
students



Test Preparation Specialists Since 1938  
For Information Please Call:  
1320 S. Dixie Highway  
Coral Gables  
666-9972  
For Locations in Other Cities, Call:  
TOLL FREE: 800-223-1782  
Centers in Major US Cities  
Toronto, Puerto Rico and Luxano, Switzerland

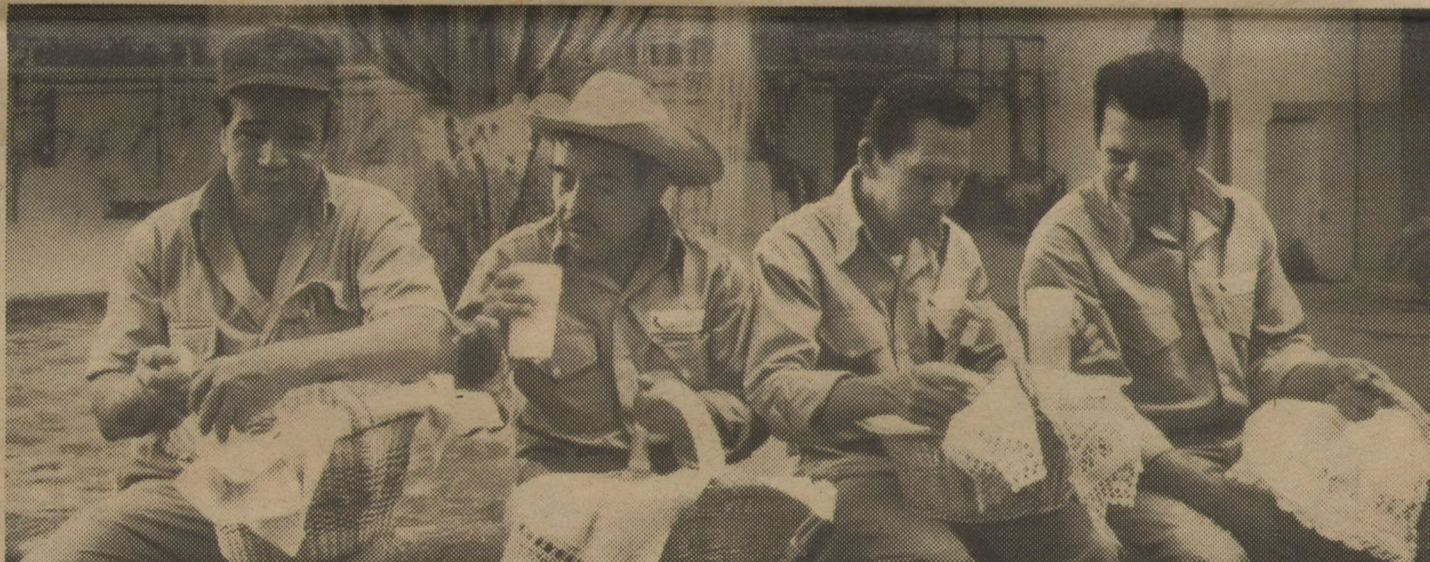
**STANLEY H. KAPLAN EDUCATIONAL CENTER**

There is a difference!!!  
Flexible Programs & Hours  
NURSING BOARDS  
NAT'L DENTAL BOARDS  
ECFMG • FLEX • VQE  
NMB I, II, III,  
GMAT • OGAT • VAT • SAT  
MCAT • DAT • LSAT • GRE  
PREPARE FOR:  
Our 39th Year

Suppliers to the Creative Arts

OUR NEW PHONE  
573-0980  
New larger location  
We've moved to our  
125 N.E. 26th St., Miami, Fla.

- ARCHITECTURE
- FINE ART
- COMMERCIAL ART
- LITHOGRAPHY
- PICTURE FRAMING
- DRAFTING
- ENGINEERING
- SIGN PAINTING
- ENGRAVING
- SILK SCREENING



Lunch time in the patio of our La Rojeña distillery.

When our workers sit down to lunch  
they sit down to a tradition.  
When they make Cuervo Gold  
it's the same.

Every day at just about eleven the wives from Tequila arrive at the Cuervo distillery bearing their husbands' lunches.

Lunches that have been lovingly prepared in the same proud manner since men first began working here in 1795.

It is this same pride in a job well-done that makes Cuervo Gold truly special. Any way you drink it, Cuervo Gold will bring you back to a time when quality ruled the world.



**Cuervo. The Gold standard since 1795.**

**EQUIPMENT**

# FINALLY, YOUR STUDENT I. D. PAYS FOR ITSELF.

Announcing the grand opening of Brands Mart in Florida. We're one of the biggest wholesale distributors of TV and sound equipment on earth. And all you need to get in is your college I.D.

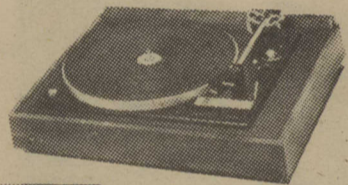
**CAR STEREO'S**

**STEREO COMPONENTS**

**MORE STEREO'S**

**SPEAKERS**

AM HAVING A LEETWOOD MAC ATTACK!



**Technics**  
by Panasonic

**TECHNICS**

SA5270

VERIT

MODEL 200 SL

**DUAL**

1237

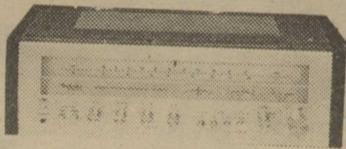
**SUPER BUY**

**\$399.00**

**LOWEST PRICE EVER.**



**Dual**



**Verit**

**AM-FM Stereo Receivers**

**MARANTZ**

2238 38/channel **225.00**  
2330 130/channel **425.00**

**PIONEER**

SX450 15/channel **133.00**  
SX550 20/channel **148.00**  
SX650 35/channel **185.00**  
SX750 50/channel **245.00**  
SX850 85/channel **345.00**  
SX950 110/channel **395.00**  
SX1250 160/channel **519.00**

**TECHNICS**

SA5070 15/channel **139.00**  
SA5270 35/channel **229.00**  
SA5770 165/channel **126.00**

**KENWOOD**

KR2600 15/channel **126.00**

**SAN SUI**

5050 30/channel **199.00**  
6060 40/channel **249.00**  
7070 60/channel **359.00**  
8080DB 85/channel **419.00**

**TAPE DECKS**

**AKAI**

4000 DS reel to reel **225.00**  
GXC710D cassette **289.00**

**PIONEER**

CTF2121 cassette **115.00**  
CTF9191 cassette **295.00**

**TEAC**

A100 cassette **138.00**  
A170 cassette **133.00**

**SPEAKERS**

**KLH**

CB6 **88.00** pair  
CB8 **72.00** each  
CL3 **105.00** each  
CL4 **139.00** each  
SCXA **189.00** each  
SCX3A **269.00** each

**SAN SUI**

A2900 **69.00** pair

**JENNING**

RECT **82.00** each  
ELAN **235.00** each  
Vecti **110.00** each  
VECT1A **135.00** each  
VECT2B **130.00** each  
PEDESTAL **155.00** each

**JENSEN**  
CAR SPEAKERS

C9945 triaxial TRIAXIAL SPEAKER **49.88**  
C9943 coaxial COAXIAL SPEAKER **25.88**  
INLAND 4x4 4x4 **69.85**

**TURNTABLES**

**GARRARD**

440M cart&dust cover W/CART, BASE & DUST COVER **39.00**

**TECHNICS**

SL23 belt drive BELT DRIVE TURNTABLE **109.00**  
SL1900 semi-automatic SEMI-AUTOMATIC TURNTABLE **144.00**  
SL1950 automatic AUTOMATIC TURNTABLE **159.00**

**DUAL**

MOD4D professional PROFESSIONAL TURNTABLE **159.00**

Prices cheerfully given over the phone. Call us for a super price on your next stereo purchase.

DADE 624-5400  
BROWARD 764-0400

TOLL-FREE WATTS LINE  
1-800-432-8579



**BRANDS MART**

You must have a Brands Mart card or a college I.D. for admittance.  
4900 N.W. 167 St., No. Miami, Fl. 33014 (On the south side of the Palmetto on 49 Ave.)  
Phone: Dade 624-5400, Broward 764-0400

Brands Mart is one of the largest stereo wholesalers on earth. And now we're in Miami. To begin with, you won't believe our selection—from super low priced compacts to super high performance ultra component systems. Names like Marantz, Sony, Fisher, Pioneer, Garrard, Dual, Technics, KLH, JLB, Sherwood, Advent and more. You'll have a chance to tour our five-room sound complex. And listen to more than 400 receiver/speaker combinations. You'll talk to people who know what they're doing. Not salesmen, but sound experts. You'll have the benefit of a total-capability service department. Right here. And most important, by taking advantage of our nationwide buying power, you'll walk out with a sensational value.



# the International

Florida International University Miami, Florida 33199

## Officer Blair wins reinstatement

**BOB SHANBROM**  
Staff Writer

June Blair, campus police officer terminated for "abandonment of position" last November, has been ordered reinstated by Conley Kennison, State Personnel Director.

The ruling came two weeks after Deputy Director Miles Dean heard testimony from Blair and her Police Benevolent Association Attorney Donald Slesnick and from various FIU representatives including Vice President for Administrative Affairs Ronald Arrowsmith, University Attorney William Glenn, and Assistant Director of Personnel Bruce Yeckley. FIU Director of Public Safety Timothy Fenlon reportedly did not appear.

According to Slesnick, the testimony most beneficial to Blair's case came from Yeckley who admitted that he had spoken with Blair the day of her administrative resignation but had failed to warn her of the impending action

**"I was very happy to see that the formal channels actually functioned."**

**—Susan Alvarez, Chairperson  
Career Service Senate**

against her. "Even Arrowsmith had seen her on campus, obviously injured, but hadn't asked her about her condition," Slesnick added.

Blair had lost her position for not producing a doctor's certification explaining a 40-day absence after she suffered a fall on Public Safety Department stairs. Blair maintained that she had tried but that her doctor had been slow in producing the letter.

Kennison's letter reinstating Blair defined "desertion" as a "willful action" and ruled that this had not occurred.

"Justice has been done," was Slesnick's reaction. "We've made it clear from the beginning that Blair was the object of a campaign by management to weed out whoever it

perceived to be troublemakers. They thought they had an easy out with 'abandonment'—that way they wouldn't have to substantiate low performance evaluations."

"As the representative of rank and file she had to question illogical and asinine procedures. As a vanguard she took flak for all—because of that role they pegged her," Slesnick added.

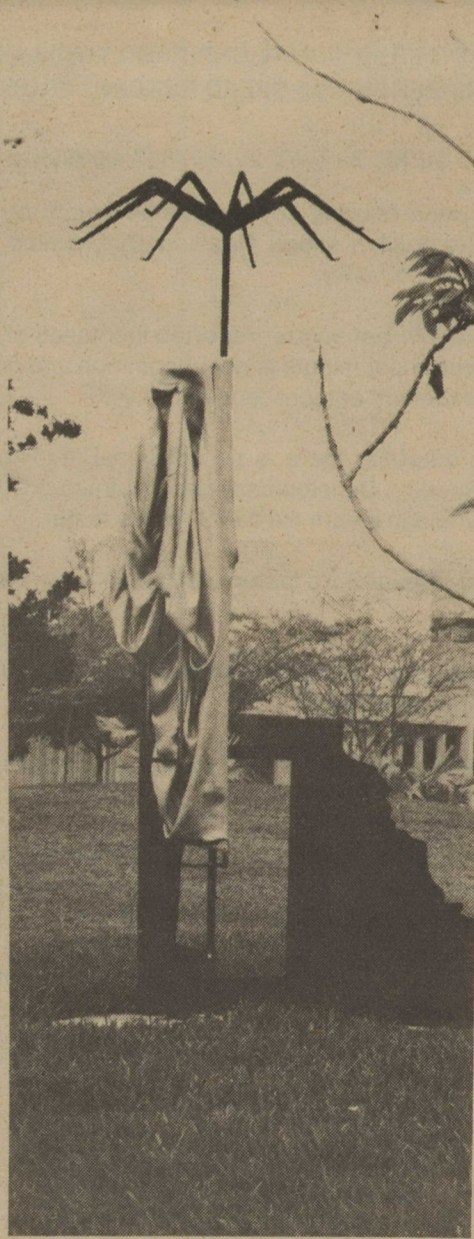
Fenlon said he has "no problem" with reinstatement. "I would like to have her back as soon as possible; this was the original problem." He added, "If she had been courteous enough to let us know when she was coming back to work the entire mess could have been avoided." Fenlon described the appeal process as doing what she refused to do (forcing her to document her absence).

Susan Alvarez, Chairperson of the Career Service Senate and an early critic of the administration of the PSD, said (concerning Blair), "I was very happy to see that the formal channels actually functioned—that a severe wrong has been righted," adding, "If the Board of Inquiry report is followed and the administration of the PSD has learned from experience, I would be optimistic of improved relations."

Another criticism voiced by Slesnick was, "FIU's personnel department either didn't understand the rules or they knew them and broke them anyway. Take your pick." Personnel Director Pat Caruso responded to that allegation, "We went with the good faith information that we had." She also denied that she had been pressured into signing the letter terminating Blair.

Blair declined comment explaining that since she had been reinstated she would have to get clearance from her superiors before speaking with members of the press.

## Art or junk?



Richard Sevigny photos

FIU artist Ralph Buckley's "free form" sculptures grace the grassy knoll behind the UH complex. Art or Junk? Only the viewer can decide, making this a definite lesson in objectivity.

## Few enter SGA races

Next week's Student Government Association elections show signs of more than the usual amount of apathy on the part of students.

For the first time in SGA's history, four of the Presiding Board candidates, including Chairman, will run for election unopposed.

The elections, held twice yearly, will be April 10, 11 and 12.

In the race for Presiding Board, the one position being contested is that of Associate Chair. Albert Hoskin, presently an Associate in the School of Health & Social Services; and Richard Weinstein, member of the recently-disbanded NMC Council, will run for the seat.

Cindy Burton, Associate in the School of Education, will be the second person in SGA history to run unopposed for Chairman.

No student filed a petition for an Associate seat in the School of Business, which has two seats available.

As customary in past senate elections, the most hotly-contested race appears to be in the College of Arts and Sciences with seven students vying for the two open seats.

The only other schools in which positions will be contested are the Schools of Technology and of Hospitality Management.

In the School of Health and Social Services, one student, Nate Robinson, will take one of the two open seats.

The main issues remaining are the five proposed amendments to the SGA Constitution.

Students can vote "for" or "against" each proposed amendment.

Any proposition receiving a simple majority of votes cast will be added to the Constitution.

The first proposition deals with assigning power to the student body to "propose the revision or amendment" of the SGA Constitution.

The second proposition would officially change the titles of SGA "Chairman" to "Chairperson" and "Associate Chairman" to "Associate Chairperson."

For the complete text of the proposed amendments and statements from the candidates, see page six.

All degree-seeking students are eligible to vote for candidates in their respective school or college. Special students can vote only for referenda.

Students wishing to vote in any race must present a valid FIU identification.

In order to vote for a candidate not on the ballot, students may write in a name. Ask pollworkers about write-in procedures.

## April Fools'

If the stories and headlines on our "fake" April Fool's front page have made you a nervous wreck, you better whip out the bottle of Valiums. It was all done in good humor.

The concept and execution of the spoof were the work of communication students Andy Tapanes and Bill Ashton. We hope we have not upset anybody. Any similarity to living or dead (also include soon to be dead) persons is purely and strictly coincidental.

The actual and hopefully factual front page starts from the back. Photos courtesy of Joan Rivers' "Rabbit Test."