



## CHINA

### Chinese dissident wins Nobel Peace Prize

Imprisoned Chinese democracy campaigner Liu Xiaobo on Friday won the Nobel Peace Prize — which drew furious condemnation from the authoritarian government.



## PUERTO RICO

### Police swept up in corruption probe

Hundreds of FBI agents flew into Puerto Rico to round nearly 90 police officers accused of aiding drug traffickers.



## AFGHANISTAN

### Head of Kunduz province killed

The governor of the northern Afghan province of Kunduz, Governor Muhammad Omar, has been killed along with at least 14 others in a bomb blast at a mosque.

# Center strives to make morge effective leaders

MELISSA CACERES  
Staff Writer

Five years since its inception, the Center for Leadership continues to spread the word that while leaders may be born, they are also made at FIU.

The center, which is now located within the College of Business, is dedicated to learning as well as teaching others about the concept of leadership by providing seminars, workshops and surveys for executives who wish to become more effective leaders.

“Our goal is very simple. We want to be the foremost leadership center in the world,” said Modesto Maidique, president emeritus and executive director of the Center for Leadership. We believe we are already the best in Florida and competitive with some of the better centers in the United States after only the first year.”

Created in 2005, the Center for Leadership is an organization focused on becoming the nation’s premier center for global leadership research, development and training.

Its programs, which focus on leaders like CEOs and businesswomen, aim to improve the management and decision-making skills of those who lead.

This year, the workshops have brought in around \$327,000 in general revenue, a 47 percent increase since the previous year.

“The Center for Leadership tries to help people understand themselves so that they can become more effective decision makers for these huge decisions,” said Maidique. “Not for the decision to buy a green sofa or a blue sofa, but the decision to move to a new country to hire

and the like.”

Their program, “Leading Decisions,” which is designed for senior managers, vice presidents and executives has recently grown to 20 participants spanning fields such as media, health care, industry, tourism and the U.S. military.

Each executive is analyzed based on his or her experience, personality and values within the four days of the program.

At the end, the executives are provided with a portfolio that assesses each one of them as leaders and gives them professional feedback on how they can become more effective.

Companies like Hewlett Packard have requested the workshop and customize it for their middle and senior level women executives, with 2011 being their fourth year hosting the half-day program.

“The University is all about research and bringing in cutting-edge knowledge,” said Mayra Beers, administrative director for the Center For Leadership. “Leadership is such a hot topic these days and we’re building that research base [here].”

Targeting more specific types of leaders, the Center for Leadership created a workshop catered to women in the business world in 2007.

“We have found that women appreciate being part of another group which everyone else is a woman and has similar problems,” said Maidique. “Similar problems associated with having had the children and the particular biology of being a woman. They’d like to have that opportunity to discuss with other participants and also

LEADERSHIP, page 2

## CLOSE CALL



VICTORIA LYNCH/THE BEACON

Darriet Perry runs for a touchdown in the Golden Panthers’ 28-21 victory over Western Kentucky at home.

# Convocation honors faculty with awards ceremony

ALEXANDRA CAMEJO  
Asst. News Director

As part of the annual three-day Faculty Convocation, an awards ceremony on Sept. 7 recognized the accomplishments of the University’s faculty and adjunct faculty members.

Held at the Herbert and Nicole Wertheim Performing Arts Center, the ceremony was dedicated to acknowledging the collective effort and individual accomplishments of faculty.

“I recognize that we have many excellent researchers at FIU, so to be recognized with the award is a great honor. I have been very humbled by all the heartfelt congratulations that I have received from my friends and colleagues,” said Steven Oberbauer, professor of biological sciences and recipient the Excellence in Research and Creative Work award.

Students, family members, staff and administrators welcomed a procession of faculty into the auditorium. As recipients received their awards, swarms of cheers were



ALEXIA ESCALANTE/THE BEACON

Faculty and members of the University’s administration on stage during the Faculty Convocation awards.

common amongst audience members, emphasizing the support that many of these faculty members have.

“I was proud yesterday that my parents and daughter and so many of my students and graduates were in attendance to see me receive it,” said Tonette Rocco, associate professor of Leadership and Professional Studies and recipient of a Excellence in Graduate Mentorship award.

There were 12 faculty members

awarded for excellence in one of five categories of teaching, research, mentorship, librarianship or service. For their excellence in teaching, three adjunct faculty members were also recognized.

“I think the Excellence in Teaching Award is more than anything else a reflection of the excellence, creativity, and resourcefulness of the students I have the privilege to collaborate with,” said Honors College Instructor

John Baily, who won an award for Excellence in Teaching.

From three finalists, the President’s Council Outstanding Faculty Award, the most prestigious award of the convocation, accompanied with a monetary prize of \$12,500, was awarded to two-time nominee, Dr. Arvind Agarwal, associate professor of mechanical and materials engineering.

The two runners-up, Founding

Chair of the Department of Molecular Microbiology and Infectious Diseases, Dr. Kalai Mathee and Founding Director of the University’s Child and Family Psychosocial Research Center, Dr. Wendy Silverman, received \$2000 as a consolation prize.

During the convocation, University President Mark Rosenberg addressed recent critiques of the University that “suggest that we’ve lost our way; that we’ve lost sight of our primary mission—the education of young people.”

“This is where community comes in,” said Rosenberg. “I’m convinced that we understand that we have something special at FIU in community.”

The convocation’s keynote speaker, John F. Stack, director of the School of International and Public Affairs, highlighted the influence of community, not only within the University but also within the global city of Miami in his exploration of

AWARDS, page 2



# ‘Women on the Move’ helps women take action

LEADERSHIP, page 1

be a majority.”

“Women on the Move,” the four-day intensive program, is focused on preparing “high potential women” to take action on what matters most to them and their organizations.

Hosted by Joyce Elam, executive dean of the College of Business, the workshop has, to this year, graduated 36 women and has 106 alumni from public-sector and private organizations based in the USA, Latin America and the Caribbean.

Their research on women leaders is entering its fifth year, with the publishing of the “Florida’s Woman-led Businesses Report” which reported on the “challenges, successes and shared best-practices of the women who lead Florida’s businesses.”

“As high-achieving women move up the ranks of their organizations, they realize the need to take responsibility for their own leadership development,” said Elam on the Center for Leadership website.

During the 2009-2010 fiscal year, Center for

Leadership received a \$4 million endowment from the John S. and James L. Knight Foundation to develop and implement a leadership development program for principals of Miami-Dade’s public schools.

The Principals Leadership Development has had 30 principals from the local education community and hopes to increase its numbers as time progresses.

According to Maidique, Center for Leadership expects “every principal or aspiring principal in Miami-Dade County to go through our program.”

Maidique, who is now a visiting professor at the Harvard Business School during this three-month sabbatical, continues to serve as the executive director.

With Beers as director of operations and Dean Elam as one of the head faculty members, he states that as far as the center progressing during his absence, he feels “very comfortable.”

“The whole leadership center is based on a model that I have that says ‘if you know yourself, then you can make better decisions’, said Maidique.

# No new buses, hires to make schedule possible

GPE, page 8

held accountable for every passenger that rides the bus and the opportunity for fraud is lessened. Parking and transportation did not add any new buses or new drivers to make the new schedule possible.

“By just adding one more bus it would increase the total by almost \$30,000 per year,” Foster said. David Silvera, a bus driver for the last four years, said there are approximately five drivers who work on the routes and each have four routes on a daily basis.

“There is no problem with the new schedule and the kids love it, it is absolutely beautiful,” Silvera said. The only

dissatisfaction Silvera has is the break time he and his colleagues receive. With a four-bus schedule every day split between five employees, the only break time they get is 15 minutes.

“I would appreciate if they would give us a lunch break,” Silvera said. “The way it’s scheduled now, we need a relief.”

Silvera said the number of drivers currently employed is enough and adding new drivers wouldn’t be necessary.

Foster said his department is always in a state of problem solving.

“When we do hear from those who are challenged with the scheduled times, we look into ways to try and solve the dilemmas,” Foster said.

# Keynote speech highlights students’ edge in market

AWARDS, page 1

“Miami: From Local to Global and Back Again.” He noted that, “every professional school and every college represented here today, all the students are advanced because of the local and global dimensions of our curriculum.”

His speech highlighted the edge that FIU

students have in the professional market with the University’s global influences.

“The deeper reality lies in how we balance diversity and complexity. The international in FIU is important because of who we serve, not only is it intrinsically global, but the local and global mix has implications for the students we teach and the communities we serve,” said Stack.

# Roundtables encourage readership program

NYT, page 8

When asked if she ever picks a copy of The New York Times, or any newspaper, Qyum answered: “never.”

Still, there will always be students that prefer the tangible aspect of news in the newspaper form.

“Although the Internet has ultimately excelled in the delivery of news, nothing compares to the usability of a newspaper,” said Kimberly Mofford, junior psychology major and former journalism major.


Dean Williams, SGC-MMC press secretary, stated that essentially none of the 250 copies distributed on campus get thrown out. A similar response was obtained from Oehleo Higgs, SGC-BBC press secretary, who commented that the racks are usually always

empty when he walks by them.


The NYT has further encouraged the continuance of their readership program by presenting roundtable discussions held every Tuesday at both campuses.

These discussions originate from The New York Times articles, such as the Oct. 12 discussion at the Wolfe University Center titled “Alpha Wives: the Trend and the Truth,” which came from an article that suggested the presence of a role reversal in potential marrying men and women. All discussions occur from 12:30 p.m. to 1:30 p.m. and refreshments are available courtesy of The New York Times.

Students and professors who are interested in the Times College Readership Program can contact their respective student government council to encourage the continuation of the program.



**THE BEACON**



---

**E-BOARD AND PRODUCTION STAFF**

<u>EDITOR IN CHIEF</u> <b>JORGE VALENS</b>	<u>ASST. OPINION EDITOR</u> <b>JASMYN ELLIOTT</b>
<u>PRODUCTION MANAGER/COPY CHIEF</u> <b>CHRIS TOWERS</b>	<u>PHOTO EDITOR</u> <b>ESRA ERDOGAN</b>
<u>NEWS DIRECTOR</u> <b>GABRIEL ARRARÁS</b>	<u>COPY EDITORS</u> <b>BRIAN CORREIA, SERGIO MONTEALEGRE, DANIELA PEDROZA</b>
<u>ASST. NEWS DIRECTOR</u> <b>ALEXANDRA CAMEJO</b>	<u>PAGE DESIGNERS</u> <b>LAURA ALONSO, MIKE COSTA, SERGIO MONTEALEGRE, JACQUES ROZIER</b>
<u>BBC MANAGING EDITOR</u> <b>PHILIPPE BUTEAU</b>	<u>RECRUITMENT DIRECTOR</u> <b>VICTORIA LYNCH</b>
<u>LIFE! EDITOR</u> <b>ADRIANA RODRIGUEZ</b>	<u>BUSINESS MANAGER</u> <b>CHRISTINA RIVERA</b>
<u>ASST. LIFE EDITOR</u> <b>DENISE RODRIGUEZ</b>	<u>DIRECTOR OF STUDENT MEDIA</u> <b>ROBERT JAROSS</b>
<u>SPORTS DIRECTOR</u> <b>JONATHAN RAMOS</b>	<u>ASST. DIRECTOR OF STUDENT MEDIA</u> <b>ALFRED SOTO</b>
<u>ASST. SPORTS DIRECTOR</u> <b>JOEL DELGADO</b>	
<u>OPINION EDITOR</u> <b>CHRISTOPHER DIAZ</b>	

**CONTACT INFORMATION**

Modesto Maidique Campus:  
GC 210, Mon-Fri 9:00 AM-4:30 PM  
(305) 348-2709  
news@fiusm.com

Biscayne Bay Campus  
WUC 124, Mon-Fri 9:00 AM-4:30 PM  
(305) 919-4722  
bbc@fiusm.com

Fax:  
(305) 348-2712

Editor-in-Chief:  
(305) 348-1580  
jorge.valens@fiusm.com

Advertising:  
(305) 348-6994  
advertising@fiusm.com

The Beacon is published on Mondays, Wednesdays and Fridays during the Fall and Spring semesters and once a week during Summer B. One copy per person. Additional copies are 25 cents. The Beacon is not responsible for the content of ads. Ad content is the sole responsibility of the company or vendor. The Beacon is an editorially independent newspaper partially funded by student and services fees that are appropriated by student government.

Global Learning for Global Citizenship

# Tuesday Times Roundtable

at Modesto A. Maidique Campus (MMC)

**Title:** International Adoption and Identity

---

**Moderator:**  **Laura Boudon, Ph.D., MSW**  
Panther Community Coordinator  
Herbert Wertheim College of Medicine



---

**Time & Location:** Tuesday, October 12, 2010  
12:30pm-1:30pm  
MMC-GC150  
*Lunch and refreshments provided!*

presented by **The New York Times**



Student Government Association



Global Learning

FOOTBALL: FIU 28, WKU 21

## OVER THE HILL

### Golden Panthers escape with close win against WKU



VICTORIA LYNCH/THE BEACON

Darrian Mallery [right] ran for 97 yards and a touchdown to help spark running game in first win of the season against the Hilltoppers.

**IGOR MELLO**  
Staff Writer

Anthony Gaitor had been playing a great game by his standards, but he wanted more.

The All-Sun Belt Conference cornerback was celebrating his birthday and had already racked up a crucial third down sack for an eight-yard loss in the fourth quarter. But when his defense was facing a critical third and four and a possible chance to let a 21-0 lead slip away, the All-Sun Belt cornerback came to the rescue.

Western Kentucky ran a "jet-sweep" with wide receiver Willie McNeal towards his side. Gaitor immediately had a flashback to practice when he saw that play. According to Gaitor, the team has been studying that play all week in practice.

"I was just concentrating on taking him down," Gaitor said.

Gaitor brought down Willie McNeal in the backfield for a loss of four yards. That stop led to a fourth down heave at the endzone that was broken up by cornerback Dez Johnson.

FIU (1-4, 1-0 Sun Belt Conference) lined up in the victory formation for the first time this season.

The Golden Panthers narrowly escaped at home against Western Kentucky (0-5, 0-1) with a 28-21 win. The first victory of the season

also gave the Golden Panthers a 1-0 start to their conference play.

With the loss, Western Kentucky extended the nation's longest active losing streak to 25 games.

The running trio of Darrian Mallery, Kedrick Rhodes, and Darriet Perry led the Golden Panthers to four rushing touchdowns, tied for most in FIU history. The team also rushed for a season-high 235 yards.

"Our running backs preached to each other to have patience and watch the holes because they open up real slowly and you just got to hit it," Mallery said, who led the team with 97 yards rushing.

"We were 'tempo-ing' so high that the defense was getting very tired," said quarterback Wesley Carroll, who threw for 108 yards on 12 out of 19 completions, including one interception. "You could tell when they had a substitution penalty and we had to take advantage of that."

The Golden Panthers committed 16 penalties for 135 yards, which almost cost them the victory in the second half.

"We finished even when we shot ourselves in the foot. Sometimes that ends up being a better lesson than anything else," said Head coach Mario Cristobal.

For more on this story, check out [fiusm.com](http://fiusm.com).

#### FOOTBALL

## Despite important victory, flaws still haunt Golden Panthers

It wasn't pretty. It was far from flawless and even farther from convincing.

But it was one thing and when the dust settles it is the most important thing: a win.

It took a nice defensive play in the end zone by Dez Johnson with less than a minute remaining in the fourth quarter for the Golden Panthers to secure their first victory of the season and to avoid what could have been one of the biggest meltdowns in the program's history.

'The Fourth Quarter Syndrome' nearly doomed FIU for the fifth week in a row as the Golden Panthers gradually faded from the second quarter onward as they stumbled their way to the finish line.

This time, however, the

clock mercifully ended with the Golden Panthers on the winning side of the box score for their first win of the season.

#### COMMENTARY



JOEL DELGADO

#### STRONG START

As usual, the Golden Panthers came out with fire and began to look like a team that could be a championship contender in the Sun Belt

Conference.

The running game appeared to resurrect under a typical October sun in South Florida with a balanced ground attack led by speedsters Darrian Mallery and Kedrick Rhodes. Even T.Y. Hilton got into the act, finally finding the end zone for the first time this season on a fancy reverse to open up the scoring.

With all four FIU touchdowns on the afternoon

coming through the ground, all by different rushers, the Panthers finally developed the running game they had been looking to establish.

It will be critical for the Golden Panthers to keep the run option open for the remainder of the season.

Through the air, Wesley Carroll started looking like the field commander fans were praying for prior to the season and put together a string of six consecutive completions in rapid succession to set up a drive that put the Golden Panthers comfortably ahead near the midway point of the second quarter.

After that, things began to get very uncomfortable.

#### THE MELTDOWN

Down 21-0 and on the verge of getting blown out, the Hilltoppers burst to life from seemingly nothing and picked up a touch-

down cut into the lead.

After Carroll threw an interception on the first play of the ensuing drive, every person in the building felt the momentum starting to swing towards the visiting team.

The defense began to falter much faster than usual, coming up flat and allowing the Hilltoppers to pick up critical third down conversions time and time again.

Not to mention a number of ill-timed penalties that opened up a number of doors for the opposing offense to walk right through.

As a team, the Golden Panthers amassed more than a football field worth of penalties with a whopping 141 penalty yards on 15 penalties, dangerously close to setting a new program record.

More capable teams would have made them pay

dearly for those mental miscues.

All of a sudden, a game that appeared to be heading towards a definitive Golden Panther victory came dangerously close to turning into a devastating nightmare.

The Hilltoppers came to within a touchdown of tying the game twice in the second half, including late in the fourth quarter.

But when it mattered, FIU held on to that slim lead.

#### KILLER INSTINCT

Once again, the Golden Panthers lacked the killer instinct to deliver the killing blow and once something goes wrong, the overall game play comes crashing down faster than a house of cards.

The defense turns dormant. The offense crawls back into a shell and abandons its unre-

dictability. And the penalties pile up.

If FIU has any intention of making travel plans of going to New Orleans in December, they need to stop playing down to opponents and maintain composure when the opposing team stands up and puts up a fight. It is a mental blockade that needs to be torn down and overcome if this team wants to battle for a Sun Belt championship.

'The Snowball Effect' is something the Golden Panthers need to avoid.

They might have been able to deal the Hilltoppers their 25th consecutive loss, but they won't be as fortunate against a more formidable Sun Belt foe.

But on this day, it was enough to give them a win. That's what matters. There are such things as ugly wins.

Pretty losses, on the other hand, don't exist.



## VOLLEYBALL: FIU 3, FAU 2

## Owls push Golden Panthers to limit in fifth set



REBECCA VILAFANE/THE BEACON

Andrea Lakovic [above] had a career-high 22 kills in close win over FAU.

**RICO ALBARRACIN**  
Staff Writer

After allowing a conference foe to tie them at two sets, the Golden Panthers were able to escape with a five-set win.

FIU (9-8, 3-2 SBC) was able to squeeze out a win against South Florida rival Florida Atlantic University (10-11, 1-4 SBC) with a final score of 25-14, 20-25, 25-13, 18-25, and 15-2.

Andrea Lakovic had the game of her career offensively, with a career-high 22 kills, along four digs and three blocks.

Natalia Valentin led the team with 55 assists and 16 digs to help the Golden Panthers get back into the win column.

In the first set, the Golden Panthers were able to jump out on the Lady Owls to gain a 12-4 lead. FAU was able to jump back to within four at 15-11, until FIU went on a

10-3 run, which culminated with a service ace by Chanel Araujo and a Jessica Gehrke kill.

The second set saw a more closely contested competition as FAU was able to hold the lead most of the way.

The lead went back and forth between both teams, with kills coming from Valentin, Lakovic, and freshman Una Trkulja. As the set was tied at 20-20, FAU went on a 5-0 run to finish the second set.

With the match tied 1-1, the Golden Panthers jumped out early and never looked back.

The pivotal point of the set was when FIU held a 16-12 lead and then had kills by Valentin, Gehrke, Lakovic and a service ace by Araujo to push the lead to 20-12. FIU only allowed one more point in the set.

After falling behind 8-11, FIU pushed back to tie the match at 15-15 and looked to

have the momentum to finish off the Lady Owls, until a few errors ruined the tide and allowed FAU to go on a 10-3 run to win the fourth set.

As the fifth set came around, it seemed as though FIU came to their senses and crushed FAU 15-2. Lakovic led the charge with six kills, as the Panthers forced errors to eventually finish the chance of any comeback.

With the win, FIU was able to get above .500 in the conference. The win was also special for Coach Danijela Tomic.

The win gave Tomic 127 wins, which ties her for second place all-time for wins at FIU.

FIU will look to split the season series with both Middle Tennessee and Western Kentucky as they come into town on Oct. 15 and 16, respectively. Both matches are set to start at 6:30 p.m.

## WOMEN'S SOCCER: FIU 4, WKU 2

## Second half surge propels Golden Panthers to victory

**JACKSON WOLEK**  
Staff Writer

In what can be described as two completely different games in one, FIU was able to pull out a victory against Western Kentucky on Oct. 8 to remain 5-0 in the conference and 8-4-1 overall. In the first half of the game, both teams battled it out defensively with a total of six shots combined by both teams.

Neither team seemed to have the advantage, momentum, or opportunities to score very much for the first 45 minutes.

That would come to change, as the second half started off with a bang. Just four minutes and thirty five seconds in, the leading goal scorer for WKU, Mallory Outerbridge,

got a penalty shot and made good on it, putting the Toppers up 1-0.

"I was just thinking about the penalty shots I stopped at Florida Gulf Coast," said goalkeeper Melanie Raimo. "I just tried focusing on doing it again, but it didn't quite happen."

Her teammates certainly had her back after the early second-half goal though, as approximately seven minutes later, Katrina Rose was able to take the pass from Kelsey Rene and connect, tying the game at one a piece.

After the goal, it seemed that the Golden Panthers had took the momentum, as they got far more opportunities to score than WKU did.

The game was an intense battle to see who could take the lead when about twenty min-

utes later, Kassandra Sorzano made ball touch cotton and score her fifth goal of the year on a corner from April Perry to put FIU up 2-1 with just 14 minutes remaining.

"The first goal was just going off of what we did in practice, and the second goal was just off the opening and I just shot it" said Rose on her two goals.

All was good for the Panthers, and right when it looked like it was going to end that way, in came Outerbridge six minutes later to score her second goal of the game, making it a tying the board up once again.

The game was starting to seem increasing likely to go into overtime, until Rose was able to score once again, this time getting the assist from Chelsea Leiva, and putting the

Panthers back up 3-2.

In a game like this, no lead was safe, and FIU must have known that because with 39 seconds to go, Chelsea Leiva scored the final insurance goal from Nicole DiPerna to put the game in the bag at 4-2.

"They came back to make it 2-2, and it could have took the wind out of our sails, but we felt the confidence in the team is high and they just kept going with the third one and then the fourth one, and we could have found more, but it was certainly a great performance tonight," said Head Coach Thomas Chestnutt.

FIU will go on to take Middle Tennessee at home on Oct. 10 at 1 p.m. Although FIU loses there shutout streak, they continue their five-game winning streak.

**HOWL-O-Scream**  
at Busch Gardens

**myX**

**Twisted Thursday 4-Pack**

**\$19.95** per person  
with online advance purchase.  
Valid for 4 or more admissions on Thursdays only.

SELECT NIGHTS  
**Sept. 30-Oct. 31**

Tickets & details at  
**myXrocks.com**  
or call 1-888-800-5447

**ADULT CONTENT WARNING**  
THIS YEAR'S EVENT CONTAINS INTENSE ADULT CONTENT SUCH AS VIOLENCE, Gore AND BLOOD.

f HowlOScream @HOSInsider

Howl-O-Scream is a separately ticketed night event. Thursday 4-pack w/ 4-up admission price is \$29.95 per person plus tax. Savings based on advance purchase. Valid for 4 or more admissions on Thursdays, September 30 and October 7, 14, 21 and 28. Some restrictions apply. Event dates and times are subject to change or cancellation without notice. Parking is not included. No outside alcohol allowed. © 2010 SeaWorld Parks & Entertainment, Inc. All rights reserved.



## MERGING ART



1. The Wolfsonian Teaching Gallery at The Frost Art Museum featuring *La Habana Moderna*. 2. Peter Paul Rubens' *The Adoration of the Magi* and *Alexander's Lion Hunt*. 3. *La Habana Moderna* is composed of 1940s memorabilia.



## Baroque and Modern art shown at The Frost

KATHY PAZ  
Staff Writer

The Target Wednesday After Hours program is the result of a collaboration and sponsorship between Target and the Frost Art Museum.

The aim of this event is to complement the exhibitions on display with a programming series.

Above all, it's not limited to just lectures and talks; Target Wednesday After Hours provides opportunities to meet contemporary artists and connect with art, music, film, dance and performance art in a closed environment.

Free and open to the public, they take place once a month from 6:00 to 9:00 p.m.

On October 13th, 2010, the series kicks off at the Frost Art Museum featuring a reception and debuting the four new collections of the fall season.

The evening will include a speed networking event for students called "How to Work a Room" at 5:00, before the presentation of the galleries.

"Sequentia" is Xavier Cortada's solo exhibit and focuses on things that make up life from both molecular and monumental aspects.

Born in New York and raised in Miami, this University of Miami graduate has been commissioned by the White House, the World Bank, Miami City Hall, General Mills and Hershey's among many others. Part of Cortada's exhibition is to synthe-

size a DNA molecule from guests with the assistance of a molecular biologist.

In order to accomplish this, he will participate in a series of LabARTory Sessions with Dr. Kalai Mathee, FIU Department of Molecular Microbiology and Infectious Diseases Founding Chair.

The "Florida Artist Series: Selections from Anomie 1492-2006" by Arnold Mesches will also be unveiled.

Mesches, an artist originating in California, is known for pieces that raise questions about the world we live in.

Through his unlikely combination of materials and use of social and political content, he blends realism and surrealism.

The artist described the exhibition at the Frost as "a condition marked by the absence of moral standards."

The series began coming together in the late 1980s and highlighted the use of postmodern concepts with old master techniques and structures.

"Embracing Modernity: Venezuelan Geometric Abstraction" reflects the abstract movement in Venezuela from the late 1940s to the 1970s.

The series includes the work of 26 artists who are responsible for its emergence and expansion.

Among those participating are Carlos Cruz Diaz, Gertrude Goldschmidt, Mateo Manaure, Alejandro Otero and Jesus Rafael Soto.

In 1902, Cuba became independent

FROST, page 6



Carlos Cruz-Diez, *Physichromie 1024*, 1975, Aluminum, PVC and acrylic, 39 3/8 x 78 3/4 x 1 1/2 inches, Art&Art, LLC Collection, Image © Gary Mercer 2010

### Fall Exhibition Openings

**TARGET WEDNESDAY AFTER HOURS**

Where curiously creative minds meet.

October 13, 2010 / 6-9pm

#### Fall Exhibition Opening Reception

Come celebrate the opening reception for four major exhibitions during Target Wednesday After Hours. The Museum will feature the opening reception for *Embracing Modernity: Venezuelan Geometric Abstraction*; *Florida Artist Series: Selections from Anomie 1492-2006* by Arnold Mesches; Xavier Cortada's *Sequentia* and *La Habana Moderna* in the Wolfsonian Teaching Gallery at The Frost Art Museum.

This evening will also include a speed networking event, "How to Work a Room" open to all FIU Students with valid FIU ID. The presentation will begin at 5pm.

Target has teamed up with The Frost Art Museum to sponsor its popular programming series Target Wednesday After Hours. Designed to complement The Frost Art Museum's exhibitions, these events give visitors the chance to meet contemporary artists and engage with controversial art, live music, talks, films, dance, and performance art.

All events are free and open to the public.

For a full list of events please visit <http://thefrost.fiu.edu>



The Patricia & Phillip Frost Art Museum at FIU  
10975 SW 17th Street | Miami, Florida | 33199  
<http://thefrost.fiu.edu> | 305.348.2890

Free and open to the public. Donations are encouraged.





# Museum reopens nine galleries for fall exhibitions

FROST, page 5

from Spanish rule.

In the period leading up to the 1952 overthrow of the Batista regime, Havana experienced a time of urban expansion that sought to create a national identity.

“La Habana Moderna” will be showcased as part of the Wolfsonian Teaching Gallery at the Frost Museum.

This exhibition is made possible because of a grant through the Andrew W. Mellon Foundation, and it explores the characteristics of Havana before the Cuban Revolution.

The collection examines

the elements that helped shape the aforementioned identity. It seeks to connect how cultural and commercial links affected the development of distinct characteristics.

Multiple media related aspects including photography, architectural drawings, posters, periodicals, records and advertising will be on display.

The museum collaborated with Professor Marilyns Nepomechie of FIU to put this presentation together. Nepomechie teaches a class entitled “Hotels: Miami and La Habana at Mid-Century.”

Of the exhibition, she told the Wolfsonian that it will “give students in my course a unique

opportunity to learn about Havana in the first half of the twentieth century by interpreting and analyzing historical artifacts, ranging from architectural drawings to hotel advertisements.

Not only will the exhibition serve our students, but it will be engaging for anyone interested in the development of the capital and its culture before the Cuban Revolution.”

All exhibitions will officially open at the October 13th reception and will remain on display until January 2nd of next year with the exception of the “Florida Artist Series,” which closes on December 5, 2010.

Admission is free for students.



ALEX GARCIA/THE BEACON

Jesus Soto's Penetrable for Ballet “Genesis” is a piece from the upcoming exhibition Embracing Modernity: Venezuelan Geometric Abstraction. Visitors can walk through the 20 foot piece that took a week to install.

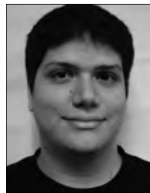
## PRESS START

# Developers need to take fan feedback with caution

Xbox 360 versus PlayStation 3: a topic that will incite gaming enthusiasts to riot.

While each console has its own strengths and weaknesses, there's a small group of people out there that argue “their side's” superiority to the death.

### COLUMNIST



SERGIO MONTEALEGRE

Let's simply call them fan boys.

Casting aside sound logic, these people will find any reason to hate the opposing console despite the two having a largely identical library of titles.

So why the heck should we care about a petty squabble between two camps of die-hard super fans? It's because developers actually try to listen to these people or egg them on when working on games.

To try to make one console better than the other, developers will slide a little bonus to one console the other won't have. Rocksteady's *Batman: Arkham Asylum* came with levels where the player can control Batman's arch nemesis, The Joker, but only for people who bought the PS3 version.

The 360 has its share of exclusive items as well. Capcom released *Dead Rising 2* late last month for both PS3 and 360.

However, Capcom added two extra parts to the game for download only for Xbox owners featuring Frank West, the first game's main character.

Both of these points only served to give more ammo to this console war among the fans, something which no doubt puts a grin on company executive's faces. *Dead Rising: Case*

*Zero* sold over 500,000 copies in less than two weeks according to Capcom.

Strange, considering that the number would have doubled had it hit PS3, too. Despite this, developers are listening to fans more.

With the boom of social media sites, developers have started to tap into their fan bases to produce games that they would enjoy playing: a game by the fans, for the fans, if you will.

While this sounds perfectly reasonable, there's one key problem: the fans usually don't know what they want.

Sega created *Sonic the Hedgehog 4: Episode I* after fans complained and begged for years to have a gimmick-less return to order for the franchise. What was revealed was a 2D platform-jumping title reminiscent of the original titles in the series.

The fan base erupted in pure rage.

Fans fired against Sega for every reason under the sun: the physics looked off. The grass looked like plastic. Sonic's eyes were green and his eyelids were beige. I couldn't make this stuff up even if I wanted to.

Including a larger laundry list of complaints from a leaked version of the game in early summer, the backlash forced Sega to delay the game to try to fix it up.

Those changes were applied to the console versions seeing release this week. The iDevice version, which came out on Oct. 7, featured none of these fixes.

While it isn't rare for fans to bite the hand that feeds them, it's also true that fan feedback helps.

Sometimes, developers can get a little too arrogant and try to reinvent the wheel in a sequel.

EA's *Madden NFL 11* introduced a new control style to simplify how players selected and coordinated plays amongst their team.

In this case, the “Madden Nation” wasn't overly thrilled with the new style, prompting EA to include the control setup from older titles as an added option via a downloadable patch.

While it is great that developers are working fans into the game development process, caution

should be taken when dealing with them.

Fans are passionate but can be narrow minded and represent a minority. Developers should target as wide an audience as possible or fan tastes and console war shenanigans may hurt them where it matters most: in sales.

*Press Start* is a weekly column on video games.

## THIS WEEK ON CAMPUS

### MONDAY, OCT. 11

#### THE DATING DOCTOR



Panhellenic Council presents David Coleman, “The Dating Doctor.”

WHEN: 6 p.m.  
HOW MUCH: Free  
WHERE: GC Ballrooms

#### HISPANIC HERITAGE KICK-OFF EVENT

Show off your Hispanic heritage pride.

WHEN: 11 a.m. - 2 p.m.  
HOW MUCH: Free  
WHERE: GC Pit

#### SOCIAL MEET AND GREET

Mingle with students and faculty of the Stempel School of Public Health.

WHEN: 8 - 10 p.m.  
HOW MUCH: Free  
WHERE: GC Faculty Club

#### Vegetarianism, A Healthy Way of Living

Lecture by Shri R.P. Jain. Hosted by Preksha Meditation Club.

WHEN: 9 - 10 a.m.

HOW MUCH: Free

WHERE: PCA 167

#### GANDHI'S LEGACY OF AHIMSA AND COMPASSION



Learn about Gandhi's message; lecture by Shri R.P. Jain.

WHEN: 1 - 2 p.m.  
HOW MUCH: Free  
WHERE: GC 150

#### HARRY POTTER ALLIANCE

Weekly meeting.

WHEN: 8 - 10 p.m.

HOW MUCH: Free

WHERE: VH 131

### TUESDAY, OCT. 12

#### TUESDAY TIMES ROUNDTABLE



Discuss selected New York Times articles. Lunch provided. Visit [goglobal.fiu.edu](http://goglobal.fiu.edu) for more info. Free for students.

#### MMC

Topic: International Adoption and Identity.

WHEN: 12:30 p.m.

WHERE: GC 150

#### BBC

Topic: Alpha Wives, The Trend and The Truth

WHEN: 12:30 p.m.

WHERE: WUC 159

#### LECTURE

FIU biology professor, Dr. Charles Bigger, will talk about his research in coral immune responses.

WHEN: 7 - 9 p.m.

HOW MUCH: Free

WHERE: WC 130

#### MEN'S SOCCER

The Golden Panthers take on the Memphis Tigers.

WHEN: 7 p.m.

HOW MUCH: Free with Panther ID

WHERE: FIU Soccer Stadium

#### THE WIND BAND LEGACY



Presented by FIU Music. The Wind Ensemble performs.

WHEN: 7:30 p.m.

HOW MUCH: \$5 students;

\$10 faculty/staff/seniors;

\$15 general admission

WHERE: Wertheim Performing Arts Center, Concert Hall

#### GOODBYE STRESS

Weekly meditation by Preksha Meditation Club.

WHEN: 2 - 3 p.m.

HOW MUCH: Free

WHERE: GC 343

### Program in the Study of Spirituality

in the School of International and Public Affairs

presents

### Emergence, Evolution and Nature

with Ursula Goodenough, Washington University



The concept of Emergence is providing an integrative and germinative framework for understanding how matters arise in Nature, generating as well the substrate for novel religious explorations. In this lecture, the Dr. Goodenough will explain and develop the concept, starting at the molecular level and moving to the human and to planetary ecosystems.

October 13, 2010 | 5 pm - 7 pm | WC 130 | FREE

Co-sponsored by the Department of Earth and the Environment, Women's Studies Center, Department of Religious Studies, and Theta Alpha Kappa Part of the Promoting the Public Understanding of Religion lecture series

<http://spirituality.fiu.edu>

FIU

Arts & Sciences  
FLORIDA INTERNATIONAL UNIVERSITY

YOUR SKILLS. OUR JOBS.  
**US PEACE CORPS**  
FIU SENIORS should apply now for assignments beginning in summer 2011

APPLY ONLINE and check website for events at FIU

[www.peacecorps.gov](http://www.peacecorps.gov)

FIU Campus Rep: 305.348.1006

11200 SW 8th ECS 157



## Redistribution of wealth a necessity

**BROOKE MIDDLETON**  
Staff Writer

Because the majority of America's wealth lies in the hands of a small minority, wealth redistribution is essential to a more equitable and stable national economy. The examination of the American distribution of wealth is one of the steps to ending the recession and restoring international faith in the American marketplace.

Wealth, according to the organization United for a Fair Economy, is what you own minus what you owe. The UFE also acknowledges that America currently has the greatest wealth disparity since the Great Depression.

The current model of capitalism has created a significant disparity in wealth distribution. But the problems lie not necessarily in capitalism itself, so much as it does in the lack of proper and responsible taxation.

Former President George H.W. Bush's tax cuts are set to expire in 2011 and it is vital that they do. The post-Bush economy, which both parties agree is abysmal, is the result of economic policies largely based on the ineffective trickle-down theory.

With deep roots in greed and partisanship, these tax cuts did not help the middle class. Instead, they enabled the wealthy to get wealthier and the majority of families to remain in a financial quandary. According to UFE, "Half of all the Bush tax cuts went to the top five percent of households, while the bottom 60 percent of households shared only 15 percent of the Bush tax cut crumbs between them." Clearly, the majority was not

aided here.

The paramount problem with the Bush era tax cuts is the fact that they benefit an incredibly small percentage of the nation. Perhaps most egregious and illogical is the tax cut for the top two percent of the nation, households falling into the category of singles making \$200,000 and couples earning over \$250,000.

The tax cut for this demographic needs to be overturned immediately because it is

**The problems lie not necessarily in capitalism itself, so much as it does in the lack of proper and responsible taxation.**

useless spending that does nothing for 98 percent of the nation.

Furthermore, according to The Center for American Progress, "Economic growth was much slower under the Bush administration's tax policies than under the Clinton administration's tax policies. Real gross domestic product grew by 26 percent in the six years after Clinton's tax increases.

But real GDP grew by just 16 percent in the six years after the Bush tax cuts began. In

fact, that six-year growth rate was low even by general historical standards.

The average real GDP growth in any given six year period, from any quarter to the same quarter six years later, since World War II was 22 percent." This is significant because it is demonstrative of the fact that the two percent of the nation given these huge tax breaks, do not in turn stimulate the economy.

Equally needing reform is the estate tax which taxes the inheritance of assets. Without a progressive estate tax, billions of dollars in tax breaks is generated solely for multi-millionaires.

These billions of dollars that benefit people who are inheriting money, could be given to the evaporating middle class that will in turn actually spend the money, thus stimulating the economy by the purchasing of goods which leads to a better job market.

Agreeing with this concept is renowned investor Warren Buffet who poignantly told Congress that a proper estate tax was quintessential to keeping America from becoming a "plutocracy," or a society governed by people whose power is derived predominately from wealth.

Despite the often too-common American mentality of shying away from discussing the redistribution of wealth, it is essential to repairing the economy to acknowledge the current gross wealth disparity and discuss solutions.

A collective vocalization of objections to Bush's wasteful tax cuts is needed to ensure our government does not, indeed, turn into a plutocracy.

## Synthetic pot an unsafe alternative

**GIOVANNI GONZALEZ**  
Contributing Writer

A new trend cropping up across the country has lawmakers in an uproar.

Synthetic marijuana, a legal, easy to find and potent imitation of the real thing is becoming increasingly popular among teens and young adults. The synthetic blend of chemicals lacks long-term research, however, and should not be considered a good alternative to the real thing.

The synthetic substitute comes branded in a variety of names such as "K2," "Spice," and "Mr. Nice Guy." Most brands are sold under the guise of "incense" or "herbal smoke aromas" and have a warning on the packaging saying "not for human consumption." Actually, this product is purchased to be smoked for a high similar to that of real marijuana.

Some brands claim to actually be more potent than pot. In fact, some users have reported to be taken aback by its potency.

The synthetic version may be up to 100 times more potent in pure form than its natural predecessor. The unexpected intensity could lead to accidents while driving or a "bad trip," where the user experiences fear, anxiety and paranoia while under its influence.

Synthetic pot has been considered to have more immediate adverse health effects than real marijuana. Since the beginning of this year, almost 700 medical incidents have been linked to synthetic marijuana. Some of these effects include elevated heart rate, respiratory problems and seizures. There has never been a single documented case of a death linked to natural marijuana.

The trend has young people replacing an illegal product with one that could harm their health, while simply trying to be in accordance with the law.

The pure active chemicals are usually a form of the synthetic cannabinoids JWH-018 or JWH-073, and are imported from Asia.

They are largely unregulated and uninspected. The chemical is then sprayed on to a blend of vegetable matter and sold in various smoke shops.

While natural marijuana is also unregulated, it does not have to be treated with any amount of chemicals that can be varied or measured incorrectly. Many shops claim to have seen a doubling in revenue due to selling the legal synthetic pot.

The little research that has been done shows that the product is very inconsistent. Different brands have very different mixtures of the active chemical or chemicals. Even different bags of the same brand have been known to differ and using the product is a gamble on potency and content every time.

It is unknown at the time of purchase whether you will get intense or weak effects from using the product. People need to know what is going into their bodies, especially from a product that is openly sold in stores.

Many of the active chem-

icals in synthetic marijuana have already been banned all over Europe. Seven states in our country have already banned similar chemicals and many more are processing legislation. The federal government has considered many of the JWH varieties as drugs of interest but a nationwide ban could take years.

Even if such a ban could be implemented anytime soon, it could be avoided by making subtle tweaks to the chemical makeup of the active ingredients.

Many use these products as an alternative to marijuana because of drug tests, as the synthetic chemicals don't show up on standard drug tests, or fear of legal repercussion.

The irony of it all is that no one would be selling, purchasing or consuming these products if marijuana was legal in the first place. Instead we have many young people consuming these products and taking a risk while doing so.

**THE BEACON** | Editorial

## University should reach out to students on smoking ban

With the smoking ban being given the final go-ahead by the University's Board of Trustees, starting Jan. 1, 2011 students who choose to live in on-campus housing will be told to keep smoke-free or go for a walk.

During their full board meeting on Sept. 24, the BOT gave final approval to the smoking ban while at the same time presenting absolutely no plans on how it will be enforced, aside from "social enforcement" -- which is almost assured to be deemed insufficient.

"This regulation is truly a reflection of a commitment to two of the things that the [University] president has presented: our commitment to environment and our commitment to health," said Vice President of Student Affairs Rosa Jones during the Sept. 24 meeting.

While it truly does demonstrate the University's commitment to health and the environment, it begs the question: what about the University's commitment to its students?

On Sept. 29, the Student Government Association at Modesto Maidique Campus Housing Senators Carlos Rodriguez and Christina Marinos held a Housing and Residential Life town hall forum, where housing students could voice their concerns about the smoking ban, its implementation and the general lack of respect by the University toward the opinions of students in relation to the ban.

According to a study conducted by University in conjunction with the American College Health Association, 4.2 percent of 42,000 students on campus consider themselves smokers.

Apparently, the concerns of 1,764 students are just not loud enough for the University to hear.

With a smoking ban in effect, a housing student would be forced to leave their dorm and either walk or drive outside the campus in order to smoke. Not only is that a huge inconvenience for the student, but it also puts their safety at risk.

The University, being an open campus, already faces enough of a challenge with security. It doesn't need to get worse by having housing students go off campus to smoke. It's a risk the University can avoid and, frankly, an unnecessary headache for members of Public Safety.

And let's not forget, those are just the students who care enough to actually leave their dorms in order to smoke.

As Rodriguez said during the forum, there will be plenty of smokers who opt to stay in and smoke in their room with a window open, which in turn will end up being a problem for the residential assistants to deal with.

This is ironic, seeing as this is exactly the opposite of what the smoking ban is intended to do: keep smoking away from non-smokers.

While the University stresses a positive reinforcement of the ban, offering services through University Health Services to help smokers quit, it needs to come to terms with the fact that they will not be able to force people to quit and that smokers will keep smoking regardless of a ban -- especially one with such a loose implementation and no initial sanctions.

It's unfortunate that the University does not even attempt to reach a middle ground with the students who would be affected by the ban. The idea of designated smoking areas has been mentioned before, only to be shot down due to the supposed \$400,000 price tag, which seems rather odd.

*The Beacon* thinks the University should not steam roll through this under the guise that this policy will benefit all students and should consider hammering out a solution with students that smoke.

### VERBATIM

*"I was stunned to notice what seemed to be a very significant gender disparity in these entertainments that were made for young children."*

Geena Davis,  
Actress

### DISCLAIMER

The opinions presented within this page do not represent the views of The Beacon Editorial Board. These views are separate from editorials and reflect individual perspectives of contributing writers and/or members of the University community.

### EDITORIAL POLICY

Editorials are the unified voice of the editorial board, which is composed of the editor in chief, management, and the editors of each of the five sections. The Beacon welcomes any letters regarding or in response to its editorials, send them to [opinion@fiusm.com](mailto:opinion@fiusm.com)

### SEND US YOUR LETTERS

Got a problem with parking? Want to give kudos to faculty? Or do you just have something to say about FIU? Send your thoughts (450 words) in to [opinion@fiusm.com](mailto:opinion@fiusm.com) or drop by our offices at either GC 210 or WUC 124. With your letter, be sure to include your name, major and year.





## BRAZIL

### Wave of robberies terrorizes Rio residents

Dozens of armed drug gang members have been setting up roadblocks and robbing drivers en masse in recent days in the Rio de Janeiro area. Residents were yanked from their cars in the middle of the streets.



## GUATEMALA

### US won't participate in adoption program

The U.S. won't participate in Guatemala's pilot adoption program. The State Department said Guatemala hasn't provided enough details on how cases will be processed under a system enacted in 2008.



## HAITI

### Clinton lobbies for earthquake aid to Haiti

Bill Clinton expressed frustration with donors who have only delivered about \$732 million of a promised \$5.3 billion in funds for 2010-11. The United States has yet to deliver any of its promised \$1.15 billion.

#### THE NEW YORK TIMES READERSHIP PROGRAM

## Program provides fewer papers with smaller budget

OMAR NINAQUISPE  
Contributing Writer

Even though The New York Times newspaper is available online through a free registration process, the Student Government Council at the Biscayne Bay Campus still chooses to allocate a portion of their budget to pay for the Times College Readership Program program.

For over five years, the University has used student activities and services fee money to provide copies of the NYT to students at both the Modesto Maidique Campus and BBC. The newspaper is readily available because of the Times College Readership Program, which ensures the delivery of the paper Mon. through Fri.

Originally, the funding of the readership program was split between MMC and BBC. Both campuses would pay anywhere from \$20,000 to \$28,000 and share copies of the newspaper. When this was the case, each campus would receive roughly 500 copies every weekday.

However, for the 2010-2011 academic year, BBC has found itself paying for the entire program and the number of NYT copies distributed has drastically fallen.

Only \$9,000 from the SGC-BBC budget has been reserved for the NYT program that now serves both campuses. Also, what was

once 500 copies per campus on a typical day has been cut back to 250 copies for MMC and 200 for BBC, and with only 75 copies going to BBC on Fridays.

Joseph Plambeck, a NYT reporter, wrote in an article earlier this year that "newspaper circulation has been in decline for many years, but the drop accelerated in 2007 and even more rapidly through the recession."

Jose Toscano, assistant director of campus life at MMC, can corroborate what Plambeck said. Budgeting issues have always affected the program, but for the past two years the consequences have been more clearly noted.

"Back when I started overseeing the program, five years ago, we offered the paper at the Graham Center, Green Library, College of Law and College of Business. Now, we have cut back on the number of copies available, only offering them at the Graham Center and outside the Green Library."

The University's student body has shown a substantial ambivalence when it comes to the perseverance of the readership program.

Some students, like freshman undecided major Soraya Qyyum, believe that with sites like Yahoo.com, the need for newspapers is essentially nonexistent.

When asked if she ever picks a copy of The

NYT, page 2

#### PARKING AND TRANSPORTATION

## University community weighs in on new schedule

SANDY ZAPATA  
Staff Writer

Seventy-four percent of the people who take the Golden Panther Express have said they are satisfied and happy with the new schedule, according to William Foster, director of parking and transportation.

Over the summer, the Department of Parking and Transportation had a vision to implement more rides for the GPE to and from the Modesto Maidique and Biscayne Bay Campuses.

Since the new schedule began at the beginning of the fall semester, there has been talk among the University community on bus procedures and their overall satisfaction.

Before the implementation of the schedule the goal

was to meet students' needs and, so far, it has done so, according to Foster.

"Since we cannot run buses every hour, it is almost impossible to cover every class time, but the schedule seems to meet more student needs than before," Foster added.

"Overall my experience with the new bus schedule has been good," said Silvana Ramirez, a junior who said her major was mass communications.

According to Ramirez, about a few times already the bus has broken down in the middle of the highway and the way the bus driver and department handled the situation seemed very "disorganized."

"I want to see a better emergency procedure for the buses so we don't have to

wait two hours for another bus," Ramirez.

Ramirez's complaint on the emergency bus procedure wasn't the only issue. There was also discussion about the switch to new GPE bus tickets that happened on the first day of the semester.

"It was never confusing for me when switching over to the new tickets, I just don't like that they have them in a bunch. But overall I think the new bus schedule is great," said David Fonseca, a senior political science major.

Foster explained that when it came time to switch out the old tickets to the new ones, the main reason for this was to try and reconcile the tickets validated to the number actually sold. This way the drivers are now

GPE, page 2

## PURE NEW ZEALAND CUISINE



LIANAMAR DÁVILA SANABRIA/THE BEACON

(Clockwise from top) Chef Graham Brown and Laura Manon, senior hospitality major, prepare greenshell mussel fritters. Graham garnishing the mussel fritters. Christopher Boprie, junior liberal studies major, admires a plate of oysters.

#### TUESDAY TIMES ROUNDTABLE

## Modern-day marriages now include alpha wives

JESSICA PADILLA  
Contributing Writer

This week's roundtable will be based on a Times article "More Men Marrying Wealthier Women" by Sam Roberts on January 2010.

Diann Newman, academic advisor for the School of Hospitality and Tourism Management, will be moderating the discussion topic "Alpha Wives: the Trend and the Truth." Her focus will be

increasing economic power of women and the effect it's having on modern-day marriages.

According to the Times article, men are more likely to marry women with more education and income. Women with university degrees are more likely to marry. Men want to marry breadwinners, women who can also contribute to the household income.

"We've known for some time that men need marriage more than women

from the standpoint of physical and mental well-being. Now it is becoming increasingly important to their economic well-being as well," said Stephanie Coontz, a professor at Evergreen State College in Olympia, Wash., in the Times article.

The roundtable will be on Oct. 12 at 12:30 p.m. in Wolfe University Center room 159.

Newman was not available for comment as of press time.