



FRANCE

Hungarian PM warns EU stop meddling

Viktor Orban, Hungarian prime minister, told European Union politicians not to meddle in politics while his country holds the EU's presidency, warning the entire EU would suffer.



GERMANY

Judge expects Demjanjuk verdict soon

A verdict is expected by the end of March in the trial of accused Nazi death camp guard John Demjanjuk, as his family said it appeared the court had already decided he was guilty.



RUSSIA

President takes dip in Jordan River

President Dmitry Medvedev said he's committed to helping the Palestinian acquire a unified and sovereign state. A priest will splash him with river water in a symbolic ceremony.

Community efforts recognized with prestigious Carnegie Foundation award

NICOLE CASTRO
Staff Writer

As the Spring semester unfolds, the University has already set an aura of success as the prestigious Carnegie Foundation for the Advancement of Teaching recognizes the institution for its commitment to the local, national and international community.

Among the 154 institutions that applied for The Community Engagement Classification, 115 were approved based on evidence of an institution-community partnership for a "mutually beneficial exchange of knowledge and resources."

Other recipients for the 2010 classification include Florida State University, University of South Florida and Nova Southeastern University.

"Clearly there is a great deal of interest among colleges and universities in being recognized for their community engagement commitments," stated John Saltmarsh, the director of the Carnegie Founda-

tion's Administrative Partner for the classification on the Carnegie Foundation website.

Divina Grossman, vice president of the newly founded Office of Engagement at FIU, agrees with Saltmarsh's statement and recognizes that it shares the same interests.

"We are a public university that is receiving funding from the state and the fact that we're able to demonstrate not only internal impact but also in the community shows that we are an institution that has actual results," said Grossman.

The work the University commits to is an actual application of the institution's intellectual capital comprised not only of students, but faculty and staff. Grossman also feels that community engagement is a "very important statement to make especially in this day and age when public resources are diminishing".

Institution-community partnerships at the University date back to when it was first founded in 1965,

CARNEGIE, page 2

SOME LIKE IT HOT



GLORIA BAILON/THE BEACON

Chef Giovanni Fernandez and Daniel Aquiar from El Rey de la Paella Corporation serve students Matthew Sepulveda, Terianne Bernal and Jonny Garcia. Students enjoyed free food, musical performances by Golden Idol winner, Gabriela Yidi, at SGA-MMC's Culture Fest on Friday Jan. 14.

FIU among best values schools

ANALIA FIESTAS
Staff Writer

Despite consecutive years of tuition increases Kiplinger Personal Finance has ranked several Florida public universities a "best value."

Florida International University ranked 97th on Kiplinger's annual

"Top 100 Best Values" list, joining five other Florida public universities which were also ranked best values.

The University of Florida ranked 2nd – surpassed only by the University of North Carolina at Chapel Hill, which placed first for the tenth year in a row –, the New College of Florida ranked

11th, Florida State University ranked 20th, the University of Central Florida ranked 33rd and the University of South Florida ranked 55th.

"I am pleased that FIU is among such well-regarded colleges on this list," University

KIPLINGER, page 2

Crime dramas boost interest in forensic studies majors

W. EARLE SIMPSON
Contributing Writer

FIU's graduate and undergraduate enrollments are increasing in biology, chemistry and biochemistry because of what some FIU professors are calling the "CSI Effect."

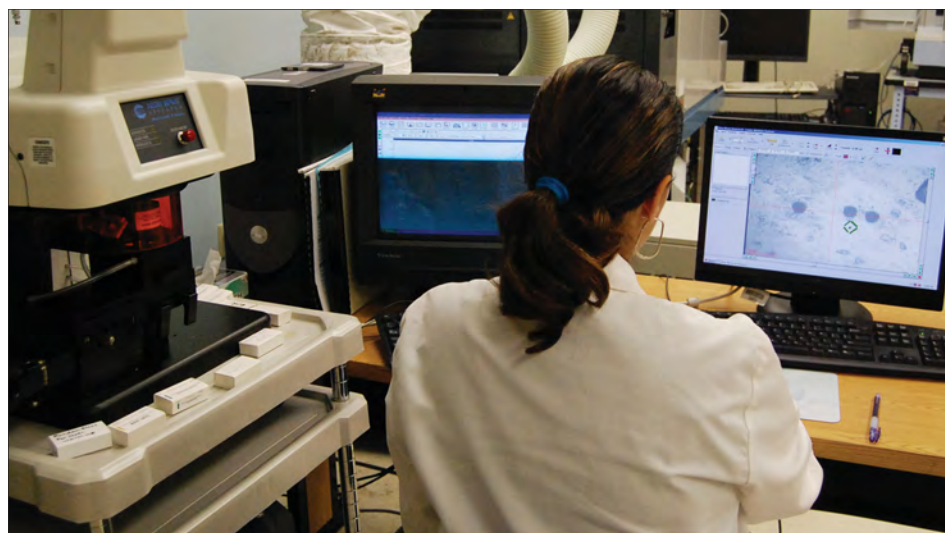
During the past four years, the professors say they have observed an increase in the interests, applications and admittances of students wanting to study forensics related to crime scene investigations.

Professor Lidia Kos, associate professor and director of the graduate program in biological sciences, said her attention was drawn to the phenomenon when she observed a spike in the number of emails about forensics studies.

"The number of inquiries that I receive every week is incredible," Kos said. "About 60 percent of the emails I get asking questions about graduate programs are people interested in doing forensic work."

The CSI Effect is a phenomenon that experts say largely affects the forensic evidence expectations of jurors in court cases.

Judges, prosecutors and defense attorneys believe that jurors, who on a regular basis, watch CSI -- Crime Scene Investigation -- and similar shows such as NCIS, Numb3rs,



ESRA ERDOGAN/THE BEACON

Forensic lab manager Tatiana Trejos looks at a glass sample in the International Forensic Research Institute. Trejos is a graduate of FIU and is currently completing her doctorate at the university.

Crossing Jordan, Criminal Minds, Bones, 48 Hours, Cold Case and American Justice, have developed a higher level of expectation for the kind and quality of forensic evidence that must be produced to convict an accused, according to a report in USA Today.

But besides noticing the effect in courtrooms, people are beginning to see the CSI Effect in schools. At West Virginia University, forensic science catapulted to the most popular undergraduate major after the topic started to dominate network and cable televi-

sion programming.

Professor Jose Almirall, director of the International Forensic Research Institute at FIU, said he noticed a similar trend at FIU.

"At FIU, we have had students who normally would not enter even science," he said. "But because of these shows, they get turned on by science, pursue it and then find out that they like it."

Almirall said before these shows began showing on TV, there was no student demand for forensic courses for freshmen and sophomores at FIU.

However, four years ago, the biology and chemistry departments responded to a need to offer these students a course called Survey of Forensic Science. Since that time, more than 200 freshmen and sophomores register for the course each semester.

But the most noticeable registration increases have been at the doctoral degree level, Almirall said.

Over the five-year period during which these shows have become increasingly popular, the number of students taking a forensic track in the doctoral degree in chemistry has grown from 2 percent to 30 percent.

CSI, page 5

NEWS FLASH

Gas explosion rocks Philadelphia neighborhood

An explosion in a gas main in Philadelphia spawned a three-alarm fire that left one person dead and five injured and prompted evacuation of several dozen residents.

Fire dispatchers said a gas and water main break was reported at in the Tacony neighborhood, and an explosion occurred at about 8:30 p.m. The dramatic blast was caught on tape by an NBC Philadelphia videographer.

Dozens of people were evacuated from nearby homes and businesses. The cause of the blast was not immediately known. Authorities said the fire was brought under control just before 11 p.m.

Obama Hosts Hu as Powers Seek Common Ground

President Barack Obama welcomed Chinese President Hu Jintao to the White House Wednesday with a full honors, red carpet greeting, marking the start of daylong meetings to address trade, security and human rights issues that have been the cause of past strain between the two powers.

With many Americans blaming China at least in part for the high U.S. unemployment rate, both presidents will be looking to build trust in a relationship grounded in mutual interest but troubled by intractable disputes.

Obama and Hu held a private dinner Tuesday night, each accompanied by two of their top officials, in the White House residence.

– Compiled by Alexandra Camejo

CORRECTIONS

In the issue dated Jan. 19, 2011, in the column titled ‘In Stiches’ by Esra Erdogan, the name Ashley Gardner is misspelled. The correct spelling of this name is Ashley Garner.

Also, the front page the headline titled “Moment of Silence” should be “Remembering Haiti.”

The Beacon will gladly change any errors. Call our UP office at 305-348-2709 or BBC at 305-919-4722.

University engaged in community

CARNEGIE, page 1

but the Office of Engagement points out that they are more intentional about these partnerships and that the partnerships are mutually beneficial.

Within less than a year of its establishment, the Office of Engagement has demonstrated a rapid rate in progress.

The office opened Feb. 5, 2010 and in a matter of 8 months, it created the infrastructure of the office, established a budget, initiated a number of significant partnerships and most importantly submitted the application for the Community Engagement Classification.

In its most recent initiative, the Office of Engagement is taking public schools in Liberty City, such as Miami Northwestern,

and establishing community schools in hopes to provide security, healthcare and social services.

Consequently, the number of high school graduates will increase due to those resources.

“The goal in liberty city is to increase the academic success of student, as well as [their] college transition,” said Grossman. “The more successful they can be, the more likely they will graduate from high school and come to FIU.”

In the agenda of the Office of Engagement are plans to visit the University of Pennsylvania’s Netter Center for Community partnerships, a program that has nationally been held up as a model, in order to mirror their involvement.

An additional project is the life

sciences quarter, an economic development initiative. The work group consists of the deans of all public and private universities in South Florida, including University President Mark Rosenberg. They have begun to meet in an attempt to attract more companies and venture capitalist to create more jobs in the area of the life sciences.

Grossman believes this is important because of the way the region has been affected by home foreclosures and unemployment.

“It is important to create an economy that is more knowledge based [in the life sciences], to create jobs that are higher paying and that are not subject to the fluctuation of the real estate cycle,” said Grossman.

Tuition considered affordable when compared to other states’ schools

KIPLINGER, page 1

Provost Douglas Wartzok told Student Media. “This ranking is further proof that FIU offers a ‘Worlds Ahead’ education at an affordable price.”

Even though the public universities in Florida have had increases in tuition charges, they still remain “best values” and extremely affordable when compared to colleges from other states.

“We always strive to make higher education accessible while providing a high quality and healthy learning environment,” said Wartzok.

Kiplinger’s rankings depend on several factors which include academic quality measured through students’ SAT and/or ACT scores, admission and retention rates, student-faculty ratios and graduation rates.

Although the schools’ academic quality is extremely important for Kiplinger’s deliberation on the rankings, the schools’ cost and financial aid, such as the price for tuition, mandatory fees, housing and books are also taken into major consideration.

For example, Kiplinger’s was extremely impressed by the New College of

Florida, which offers strong academics at an affordable price of below 15,000 dollars.

Furthermore, the school lowers the amount by more than half to all the students that need financial aid. This means some students are paying only about 5,000 dollars.

This case is similar to many of the students at

Florida International University that pay only a small portion, if not any, of the financial charges to attend college due to an academic scholarship or financial struggles—sometimes both.

“There is no gut call,” Kiplinger’s Senior Associate Editor, Jane Bennett Clark, told The Miami Herald. “We are very proud of our methodology.”

THE BEACON

E-BOARD AND PRODUCTION STAFF

EDITOR IN CHIEF

JORGE VALENS

ASST. OPINION EDITOR

NEDA GHOMESHI

BBC MANAGING EDITOR

PHILIPPE BUTEAU

PHOTO EDITOR

ESRA ERDOGAN

PRODUCTION MANAGER/COPY CHIEF

CHRIS TOWERS

BBC PHOTO EDITOR

ELIZABETH BRUNA PINEDA

NEWS DIRECTOR

GABRIEL ARRARÁS

COPY EDITORS

JOHN MELECIO, GISELLE RODRIGUEZ,

DANIELA PEDROZA

ASST. NEWS DIRECTORS

ALEXANDRA CAMEJO

PAGE DESIGNERS

LAURA ALONSO, MICHAEL COSTA,

KAYLIN KONCHAK

LIANAMAR DÁVILA SANABRIA

SPORTS DIRECTOR

JOEL DELGADO

RECRUITMENT DIRECTOR

VICTORIA LYNCH

ASST. SPORTS DIRECTORS

RICO ALBARRACIN

BUSINESS MANAGER

SAMANTHA GARCIA

LIFE! EDITOR

ADRIANA RODRIGUEZ

DIRECTOR OF STUDENT MEDIA

ROBERT JAROSS

ASST. LIFE EDITOR

ALBA TOWERS

ASST. DIRECTOR OF STUDENT MEDIA

ALFRED SOTO

OPINION EDITOR

JASMYN ELLIOTT



CONTACT INFORMATION

Modesto Maidique Campus:
GC 210, Mon-Fri 9:00 AM-4:30 PM
(305) 348-2709
news@fiusm.com

Biscayne Bay Campus
WUC 124, Mon-Fri 9:00 AM-4:30 PM
(305) 919-4722
bbc@fiusm.com

Fax:
(305) 348-2712

Editor-in-Chief:
(305) 348-1580
jorge.valens@fiusm.com

Advertising:
(305) 348-6994
advertising@fiusm.com

The Beacon is published on Mondays, Wednesdays and Fridays during the Fall and Spring semesters and once a week during Summer B. One copy per person. Additional copies are 25 cents. The Beacon is not responsible for the content of ads. Ad content is the sole responsibility of the company or vendor. The Beacon is an editorially independent newspaper partially funded by student and services fees that are appropriated by student government.

Global Learning for Global Citizenship
Tuesday Times Roundtable
at Modesto A. Maidique Campus (MMC)

Moderator & Theme

Sarah Clegg-Crawford, Student Conduct
Can Civility Survive the Age of Technology?

Sadiq Abdullahi, College of Education
Rethinking Global Education

Pallab Mozumder, Earth and Environment
To Be Announced

Rev. Paul Massingill, FIU-MDC Wesley
Is Pure Altruism Possible?

Mariam Willis, Architecture & The Arts
The Repeal of Don't Ask Don't Tell

Abuzar Kabir, Chemistry & Biochemistry
The Complex Immigration Policies of the U.S.

Steve Schwartz, University Advancement
To Be Announced

Divina Grossman, Vice President of Engagement
Deaths in Childbirth: Preventive Care & Policy

Michael Brillman, History
To Be Announced

Laura Boudon, College of Medicine
International Adoptions after Natural Disasters

Alan Gummerson, Economics
The State of the Economy

Cem Karayalcin, Economics
Debt and Unemployment

Marc Weinstein, College of Education
Do Straight "A" Students Live Longer?

Every Tuesday from 12:30-1:30pm in ZEB 150
FREE LUNCH PROVIDED
For more information, visit us online: GoGlobal.fiu.edu

presented by **The New York Times**

FIU Student Government Association **FIU** Global Learning
Office of the Provost

WOMEN'S BASKETBALL

Second half struggles down Panthers

RICO ALBARRACIN
Asst. Sports Director

After a tough conference win at Denver, the Panthers looked to build a winning streak while hosting UALR on Wednesday night. Tough defense kept the game close, but the Panthers fell short to the Trojans in a game riddled with physical play and questionable calls.

FIU kept up with UALR but an 18-1 run by the Trojans sealed their ninth consecutive win, 54-45, setting FIU back in the conference race.

The Trojans, known for their team defense, got under the skin of some of the FIU players, as play became more physical as the game went on.

"There is a difference between being physical and just out-right fouling people," Rakia Rodgers said.

Elisa Carey scored the first six points for FIU (7-13, 2-4 SBC), all in the paint to give the Panthers an early lead. The Trojans' (12-5, 6-0 SBC) Chastity Reed would not be outdone as she scored six of her team's first eight points as the teams were knotted up at eight with 11:41 left in the first half.

Rakia Rodgers scored off a running layup from the baseline to spark a 8-3 run for the Panthers. The score remained 16-11 for almost three minutes before UALR's Shanika Butler scored on a fast break opportunity to cut the lead to three.

FIU would only score one more time as the teams went into halftime with a 18-13 Panther lead. Neither team was able to manage an efficient offense, as FIU shot 34 percent in the first half, while the Trojans managed 18 percent from the field. Michelle Gonzalez contributed the low score to the defense both teams were playing.

"I think both teams were playing good defense. We were containing [Chastity Reed], who is their best scorer on their team. They were containing our penetration. That's why it was a low score," Gonzalez said.

At the beginning of the second, Asriel Rolfe scored a three-pointer for the Trojans. Jerica Coley responded right back with a jumper of her own to make it 20-16.

Every basket that the Trojans scored, the Panthers would respond to keep slight lead over UALR, as FIU

led 30-28 with 12:04 left in the game. A couple of three pointers kept the game close until Chastity Reed intercepted a pass by Carmen Miloglav to tie the score at 33.

The Trojans grabbed their first lead of the game with 9:07 left, as Janette Merriex hit a three-pointer to make it 36-33. Rakia Rodgers was involved in a verbal altercation with Marian Kursh, for which Rodgers was given a technical foul.

"We were being molested out there," Rodgers said.

UALR would push their lead to six with a Merriex three to make it 40-34 with 6:10 left in the game. A six minute drought by the Panthers would help the Trojans build a 12 point lead before Michelle Gonzalez hit two free throws, making it 46-36 with 3:51 left in the game.

Frustration began to set in for the Panthers, as lapses on defensive and poor fouls allowed for the Trojans to pull ahead 51-40. The Panthers were forced to shoot three-point shots to make a comeback, but would eventually fall short 54-45.

"Sometimes we rush our shots and not let the offense



KRISTI CAMARA/THE BEACON

Elisa Carey [center] attempts to set herself up for a score in a home loss to UALR.

develop," Carey said. "We started to rush shots and sometimes not everything goes."

Coach Cindy Russo feels that this Panther team needs more time together to finish off games.

"We still have a lot of growing up to do," Russo said. "I think the lack of experience at the end, to win games, playing together, is a big part of our break down."

Elisa Carey and Michelle

Gonzalez led the Panthers with 11 points each, with Rakia Rodgers adding 10 points. Jerica Coley had a game high 12 rebounds along with three steals.

The Panthers will look to

RECRUITING ROUNDUP

Offense looking to develop depth in key positions

In 2010, FIU put an offense that was not only worth watching, but at times absolutely joyful and refreshing to watch.

For the first time in the team's history at the football bowl subdivision level, they ran the football not only effectively, but dominantly.

Darriet Perry and Darian Mallary were fifth and sixth in the conference in rushing yards, respectively, compiling over 1,500 yards combined. FIU's receiving core, led by T.Y. Hilton, was above average in the Sun Belt Conference.

Most importantly, Wesley Carroll rounded into form as the season closed and finished as the fourth most efficient passer in the SBC at 128.4. As a team, the offense was third in the conference at nearly 29 points per game.

In 2011, the offense should be very formidable again, but as any team does, the Panthers have to address their needs through recruiting. Finding replacements for two spots on the interior of the offensive line, re-stocking in the receiver department and acquiring quarterback depth are all important heading into national signing day.

An outlook of FIU's offense heading into 2011 and the current recruiting situation:

QUARTERBACK

With Carroll coming back for his senior season, the Panthers are comfortable with

their starting situation in 2011, knowing that he can manage offensive coordinator Scott Satterfield's system. Carroll has his limitations though. His decision making is questionable, and he was either tentative or the staff didn't have complete trust in him at times.

But despite not having an above-average arm, Carroll steadily improved as the season went on and showed underrated mobility in the pocket. Barring an unforeseen setback, Carroll will remain the starter.

Depth must be established at the position and the team must identify its future starting candidates, however.

The team wisely redshirted Jake Medlock last season after he was one of the team's most prized recruits in the 2010 class. Medlock is a pro-style quarterback with an impressive skill set, and the team believes he can run the spread offense after seeing another Paul McCall, another pro-style player, handle it in 2008 and 2009 for them.

But head coach Mario Cristobal would like to add a dual-threat quarterback to compete and give the team options.

The team's primary target at the position is Miami Central's Rakeem Cato, who led his team to a state title this season and recently switched his commitment from the Panthers to Marshall. FIU is still believed to be in contention for him.

FIU has secured solid commitments from a few out of state players in Dylan Warner and Lorenzo Hammonds, both given a two-star rating by rivals. Both players are considered athletic prospects

RUNNING BACKS

Beyond Perry, who will be a senior in 2011, and Mallary, who will enter his junior season, the team has solid depth at the position.

Jeremiah Harden showed promise before injuries derailed his 2010 season, but the junior-to-be figures to be in the mix for carries next season as well.

Kedrick Rhodes had a productive freshman season. In addition, the team has invaluable young depth to spare with Robert Boswell, Brandon Bennett, and Paige Crowell.

Trenard Turner will not return in 2011.

Despite plentiful bodies, FIU is devoting a few scholarship offers to the position for its class, and has already landed three-star prospect Shane Coleman out of Green Cove Springs.

Although Coleman is the only public commitment at the moment, Cristobal is high on Hialeah's Jerron Seymour, who visited FIU last weekend and also holds offers from Florida Atlantic, Kansas State, Tennessee, and Toledo, among others.

FIU extended interest in Lake Worth four-star prospect Tre Mason and three-star recruit Marquis Sumler, but both players reportedly have their sights set on other schools.

RECEIVERS

With Greg Ellingson and Ty Frierson graduated and Junior Mertile's conversion to cornerback, the team suddenly finds itself as thin as it has been in years at wideout.

Hilton will be back and will again be the team's best weapon on offense, but he will be a senior, and depth is a concern.

Wayne Times should continue to produce in his slot role in 2011.

Jarius Williams has underwhelmed and received limited playing time. Jacob Younger became a contributor last season, catching 16 balls and topping it off with three catches in the bowl game win over Toledo.

Ariel Martinez will also be back after losing the season to a knee injury after a promising offseason. But none of those options present the upside of Willis Wright.

Wright came to the team last signing day amid a slew of hype after the former three-star prospect from Miami Springs made his

OFFENSE, page 4

2011 COMMITMENTS - OFFENSE AS OF JANUARY 19, 2011

- Shane Coleman - RB
- Ya'Keem Griner - TE
- Lorenzo Hammonds - QB
- Richie Reay - OL
- Dominique Rhymes - TE
- Clinton Taylor - WR
- Ezekiel Turner - WR
- Dylan Warner - QB

COMMENTARY



JONATHAN RAMOS

Offensive line in need of reinforcements after notable departures

OFFENSE, page 3

announcement to come to FIU, but only had two catches in 2010. Wright's role is expected to drastically increase, with his physicality and size potentially replacing Ellingson's production.

The team has addressed the position thus far with commitments from Miami Northwestern's Clinton Taylor and Delray Atlantic's Ezekiel Turner. Both players are undersized but are considered solid athletes and had solid senior seasons in high school.

OFFENSIVE LINE

FIU found itself a terrific blind side tackle when they picked up Caylin Hauptmann last offseason, and the junior-to-be will continue to be a cog for the Panthers. In addition, the team is very pleased with Rupert Bryan's play at right tackle, and he is expected to remain there.

The issue is that the team must

replace two starters on the interior of the offensive line, with center Brad Serini and guard Cedric Mack graduating. Curtis Bryant should return as the starting right guard for his senior season, with Giancarlo Revilla, Donald Senat, Austin Tottle, Kevin Van Kirk and Kenny White likely competing for the remaining two starting spots available.

One intriguing possibility would be to move Bryant to guard, which from a size standpoint makes sense, and would give impressive sophomore David Delsoin the job at right tackle.

So far, the only public commitment the team has comes from 6-foot-5 tackle Richie Reay from Tampa, who spurned Middle Tennessee to be a part of FIU's class. Cristobal would like to add another offensive lineman or two by signing day.

The next edition of Recruiting Roundup will appear in next Friday's issue.

DIVING IN



DANTE WILLIAMS/THE BEACON

Swimmers are quick off the blocks at the Dual Meet against the University of Miami and Central Connecticut State University on Jan. 15.

MEN'S BASKETBALL

Panthers look to improve on road; Taylor enrolls at FIU

JACKSON WOLEK
Staff Writer

After starting conference play this year with a three-game win streak, their success has since abruptly ended at the hands of a two-game slide with both losses, unsurprisingly, coming on the road.

If the Panthers want to keep up with cross-town rival FAU and the rest of the conference, their struggles on the road are a problem that must be solved.

"As I said coming into conference play it's going to be tough to win out on the road," head coach Isiah Thomas said.

The Panthers are just 1-7 away from "The Bank", including a 1-2 record in conference play. The two teams that they lost to, North Texas and Denver, hold very good home courts and Thomas is optimistic about his team's ability to win on the road.

"I don't see a lot of teams going into their buildings and winning," he said. "We had the opportunity to win in both those places, so I like where we are and I like what we're doing."

In all actuality, FIU does not hold the worst road record this year in the Sun Belt, an honor that belongs to Louisiana-Lafayette and their 0-10 road record. In his two years coaching FIU, Thomas is just 4-23 away from home.

Another huge concern for the team is their lack of focus from the charity strike.

Earlier in the year, free throws were addressed as a problem for the Golden Panthers in their ability to finish out close games. The same problems that haunted them in mid-November have continued to surface.

In their last game on Jan. 15 at Denver, they shot just 20 of 36 from the line. One extra free throw made

in regulation would have made the difference in the game and would have given them the win. Instead they went to overtime, where they eventually lost the contest 79-70 to the Pioneers.

EASY STEALING

One area that the team has done extremely well in is taking the ball away from their opponents, currently first in the conference in steals as they use pressure defense to make the other team turn the ball over.

"We want to put a lot of pressure on the ball, because when you do put a lot of pressure on the ball you can force a lot of bad passes and easier giveaways," Phil Gary, who leads the team with almost two steals per game, said. "The easier points you get, it can make the game a lot easier."

The steals have helped the Golden Panthers take advantage of their great athleticism this year, utilizing the fast break off of the forced turnovers. It has played a big part in why they are third in the Sun Belt in scoring with 72.9 points per game.

WRIGHT IMPROVING

DeJuan Wright had to miss the game against Denver on Jan. 15 due to catching a high-fever on the road. He is a vital part to the team's success and was sorely missed as the team went to overtime and eventually lost.

He is expected to be back in the lineup soon.

"Right now his temperature is down, and he's been able to practice the last couple of days," Thomas said of Wright.

TAYLOR ENROLLS

After a lot of uncertainty about the status of recruit Phil Taylor, the freshman guard from Georgia has made his way on campus and is

taking classes at FIU.

It is still unclear when Taylor, who decided to stick with the Golden Panthers despite opening up his recruitment, will be cleared today but it is expected that he may return at some point this season.

Taylor, who averaged 16.8 points per game at Wheeler High school in his senior year, was unable to go directly to FIU due to a poor ACT score and went to CJEOTO Academy in Somerset, N.J. After attaining the necessary score to enroll at FIU, Taylor

ON THE ROAD AGAIN

Just under two weeks ago FIU snapped a six-game losing streak against South Alabama when they came away with a victory at home in a game which saw three Golden Panthers score double digit points. They hope to have a repeat performance Jan. 21 as they take on the Jaguars again, this time on the road.

Senior Marvin Roberts was one of those three Golden Panthers. He's had great success against South Alabama, as the last two times he played them he scored 17 and 18 points in each contest.

"I just love competition and when guys get to talking to me, that just motivates me even more to do better," Roberts said. "South Alabama have a few guys that are always talking and that gets me excited so I always play better."

The last time they played the Jaguars, both Martino Brock and Augustine Rubit put up 22 and 20 points respectively. Coach Thomas is not so worried about certain players though, as is he with the whole team in general.

"We're not going to be able to shut everybody down, our focus is on the basketball game and if we can win the basketball game then that's the most important thing," Thomas said.

The Beacon is looking to fill the following positions:

-Sports Copy Editor
-Life! Designer
-Recruitment Director

As always, The Beacon is looking for ambitious, self driven and talented writers, photographers and graphic artists to join our staff

Submit your application in GC 210 in WUC 124

The Ruby Sunrise

TV's genesis focal point of play

KATHY PAZ
Staff Writer

"There is truth... and then there's television," or so says the tagline for *The Ruby Sunrise*, the latest production at the Theatre School.

Though one might think the play's all about television, it is not just a story about the birth of the tube. Rinne Groff's drama aims to showcase how reality is often rewritten by the media.

The production of this play has been an ongoing effort by the Theater Department. The show, which was supposed to premier this last fall semester, suffered a setback and was pushed to the spring following the discovery of mold infestations in the Deuxieme Maison building.

In fact, according to Marylin Skow, the Theater Department Chairperson, "*The Ruby Sunrise* had already been in rehearsal for weeks, costumes were well on their way to being completed [and] set designs were done," at the time of the mold discovery.

With the problems well behind it, the performance is set to debut on January 20. "We've been in a state of hibernation for the past 6 months, but now we're awake and ready to show the audience a good time," says David Gallegos who plays Martin Marcus, the producer of Studio 6 in the show.

Though he talks about the show being pushed back as a challenge, Gallegos faced it

with an optimistic perspective.

"It affected us as students and as actors. It did, however, make us strive to find a way to keep the show alive. Each one of us had to push harder and harder to make these characters real and bring truth to the audience," Gallegos said.

Ruby, the play's protagonist, is gifted in the field of science and sees technology as having incredible potential. She has big dreams, one being the invention of television.

The script has been hailed as both funny and inventive. "The play focuses on young characters who want to make their mark on the world but find that it takes more than just being smart, ambitious, and driven," says professor and director Michael Yawney.

"The first character we meet is a teenage physicist who invents television. If you do not know how a television works, she explains how in the play, and there is even a scene where she makes a cathode tube on stage.

Then we meet other characters who decades later work in television production, who show us how decisions are made about what will end up on the small screen," Yawney said.

The play will take place at The Black Box Theater in the Herbert and Nicole Wertheim Performing Arts Center at the Modesto A. Maidique Campus.

"I like to think of that space [The Black Box Theater] as our holodeck, and you need that to do a play that jumps through time and space



ALEXIA ESCALANTE/THE BEACON

Costume Designer, Giovanni Gonzalez, works on costumes for *The Ruby Sunrise*, the first production of the spring theater season.

like this one does. The space is intimate but the story is huge," Yawney said.

"*The Ruby Sunrise* will be of interest to so many different parts of the FIU community. The characters are scientists, writers, television producers, and the people impacted by the work of those people. It shows characters whose vision bangs up against reality. We like it when our plays can engage students and faculty from other colleges in the University, and this one certainly does."

David Gallegos feels that the audience will be able to easily relate to *The Ruby Sunrise*.

"Everybody watches television, and this play takes you back to a time where it was being invented by a girl with big dreams to change the world. We all have dreams and hopes for a better tomorrow, and this play explores that idea that a certain device can bring a nation closer together. All the characters have a passion; they love and fear the future. The characters in this play represent not only a movement of a nation, but of the entire world," said Gallegos.

The Ruby Sunrise runs Jan. 20- 23 and Jan. 27- 30. Tickets are \$10 for students.

MIGHT AS WELL JUMP



KARINA TELLEZ/THE BEACON

Senior Julie-Ann Haase, majoring in Sociology, attended SPC's Jump Into The New Year event Wed Jan 12 on the GC lawn. Students were invited for free bungee jumping, pizza and tie-dyeing.

Hit show's allure leads to increased forensic interest

CSI, page 1

"I am aware that it is a big influence for many in the field," forensic science graduate student Joel La Salvin said. "A lot of students go into it, get exposed to the real thing and if anything, drop it. But yes, CSI is one of the main attractions for a lot of people."

One of those people is forensic science graduate student Michael Hyre.

"I was exposed to the field of forensics through TV shows and that is what drew my interest toward it," Hyre said. "I later did some research and found out that the TV shows are a little unrealistic but they are what initially led me to the field."

Chemistry senior Nicole Metallo said she was also motivated by the crime scene shows.

"I got interested in forensics because of the influence of the crime scene shows on TV such as Criminal Minds, CSI and NCIS," Metallo said. "I think forensic science is an interesting field and moreover,

there are a lot of different things one can do with it."

DeEtta Mills, director of FIU's Forensics DNA Profiling Facility, said she receives many inquiries from people who watch CSI and want to get into forensic science but lack the requisite qualifications.

Still, the demand from qualified students is enough to warrant the introduction of a new master's program.

"We are opening a combined degree in masters of forensic science and biology this fall," Mills said. "That will probably increase the enrollment with those people who would be interested in both of those fields."

Mills said because other universities are also noticing the trend of an increasing demand for forensic science degrees, the demand for professors to each such courses is increasing. She said FIU graduates have taken up some of those positions.

But while the CSI Effect is influencing many, some forensic science students said CSI did not motivate them.

"Definitely, the CSI Effect does exist," biology senior Jackie Zayas said. "But I was not one of the people motivated by it."

Graduate students Krista John-Williams and Julian Mendel also said they were not influenced by the CSI Effect.

Mills said the CSI Effect could be a double-edged sword. On the one hand, it drives an increase of students to the forensic sciences because finally they can see a direct application of science. On the other hand, students may be deceived by an unreal, elaborate and exciting depiction of science.

However, Mills said, the CSI Effect can be a good thing if it helps to attract students to the idea that in the real world, science is filled with rigor, defined operating procedure, long days and hard work.

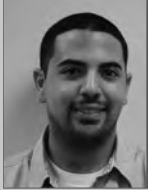
W. Earle Simpson, a December 2010 journalism graduate, produced this story in the JOU 3300 Advanced News Writing course taught by Dr. Fred Blevens.

REEL TO REEL

Oscar-worthy flick does not make for first date fodder

Watching *Blue Valentine* is like watching a car wreck between two vehicles that are mangled beyond recognition.

COLUMNIST



DAVID BARRIOS

It is certainly not a pleasant film to watch yet it retains a brutal, understated force during its run time. It doesn't rely on the morbid curiosity of onlookers to gain attention. It has the

deft touch of two established stars giving career best performances. There's one word that comes to mind: decay. It's there in Dean's (Ryan Gosling) rapidly receding hairline, and a beer belly that's sure to come as he clings to a can of Budweiser. It's in his wife Cindy's (Michelle Williams) face as she stares from a window to the man she married. It's in his voice as he pleads to her to just get out of the house for one night, if only for a night of drunken sex at a shoddy motel room.

It's a film built on the naturalistic, mundane details. It has to be, especially with the seemingly inevitable outcome hanging

over the movie from its first moments. It's not about what happens, ultimately, but how it happens.

Arriving at a futuristic themed motel suite, Dean lets off a screech of laughter. "This is how they laugh in the future," he tells his wife. She goes to the bathroom and closes the door behind her. She stares blankly for a moment, lost in a pervading thought that remains unspoken.

Dean walks in to find her in the shower. Seeking a moment of intimacy, he enters, wanting to make love. As he kisses her, she remains more focused on rinsing her hair of any remaining shampoo. She spurns him. That same thought comes to his mind: "What happened?"

What makes these scenes of impending doom so searing are that they play throughout the movie as we also witness their love blossom. With a full head of hair and fit, Dean carries a rugged, roustabout air with a deep sensitivity. He asks a coworker with the moving company if he believes in love at first sight. Cindy tells her grandmother that her biggest fear is ending up like her parents: in

an unhappy relationship.

Cindy tap dances on a street corner as Dean plays the ukulele, singing through "You Always Hurt The One You Love," sporting an admirable Elvis impression. She can sing all the last names of the U.S. presidents in order.

The seeds of destruction may already be sown on their first date. Claire mentions that she wants to go away and study medicine. Dean laughs. "Girls that look like you don't study medicine," he says.

Six years later, Cindy is a nurse looking for new opportunities in advancement. Dean is content to be a house painter with the "luxury" of being able to drink at eight o'clock in the morning. Dean is better with their child, Frankie, who dotes on him, perhaps because he is indeed a child.

In many ways, it serves as an update of Richard Yates' *Revolutionary Road*.

Woody Allen said in *Annie Hall*, "A relationship, I think, is like a shark. You know? It has to constantly move forward or it dies." The film also serves as a musing about the love itself. Does love fade? Do people settle in relationships? Are Dean and Cindy victims

of their expectation for true love?

The film is honest, showing a great understanding of its characters and never seeking to make a villain of a character. Dean and Cindy are just victims of circumstance.

It is then up to Gosling and Williams to make this film work. Their spontaneity in scenes depicting the earlier portions of their relationship endears these scenes to the audience.

Late into their marriage, Gosling tiptoes between the pathetic, the loveable, and the dangerous tossing off his wedding ring in the middle of a parking lot in a fit of anger but then quickly going into the brush to find it. Williams, then, is given the seemingly thankless task of playing the "straight man," with a quiet dignity.

One question stuck most in my mind: did they ever stand a chance? One thing's for certain. You probably won't want to take a date to this movie. May I suggest *No Strings Attached*?

Reel to Reel is a weekly column on movies. Look for it every Friday.

FISTFULS OF TECH!

'Disappointment' the word of the day following merger

Cable-giant Comcast buying a majority stake in NBC Universal, the folks that bring you your weekly fix of *The Office* among other shows and movies, may seem like business as usual, but I assure you it is far from it.

COLUMNIST



JORGE VALENS

Free Press, an open media advocacy group, did the math on this one, and it's a bit of a shocker. After this deal, Comcast will acquire "more

than two dozen local TV stations, numerous cable news and entertainment channels, and movie studios." This also includes national English and Spanish language networks. The article adds that Comcast will now own one in every five television viewing hours.

This week, the Federal Communications Commission granted approval to the company to move forward with a deal that has been nine months in the making and hotly debated, but it comes with conditions.

Give Internet service to underprivileged communities at reasonable prices, stop world hunger, cure cancer, are just some of the rules. Okay, not the last two. But, most of the regulations deal with how Comcast will walk the fine line between content and distribution.

Comcast cannot restrict or prioritize content on Hulu, the popular streaming service that NBC holds a stake in. In other words Comcast can't make NBC's 30 Rock stream faster than FOX's House.

It is also prohibited from not selling programming to other TV providers like DirecTV and Time Warner Cable.

This laundry list of regulations, which can be found on the FCC's site, is aimed at curtailing dominance and giving online content providers like Hulu, Google and Apple a fair chance in the content market.

But what's to say that this won't change?

The fact that an Internet Service Provider owns a company that distributes and creates content is a really dangerous arrangement for

users that extends far beyond the computer screen.

"The Comcast-NBC merger is truly a disaster for anyone who hopes the American public might someday emerge from the propaganda morass that is embodied by cable television, and now threatens to consume the Internet," Josh Silver said, president of Free Press in a special to the Huffington Post.

"This merger will touch all corners of the media market, and you won't be immune. Comcast will jack up the prices that other cable and online distributors pay for NBC content, and those prices will be passed to you. That means higher cable and Internet bills, even if you don't subscribe to Comcast," he added.

Where other organizations share a cautious optimism about this decision and the regulations that surround Comcast as it moves forward to cross that fine line between distributor and creator.

These stipulations are band-aids on a gushing wound; temporary fixes and appease-

ments against a company that is positioned to eliminate any semblance of competition in a place that has been known for ultimate competition.

The FCC, though admirably standing to defend consumer interests in this matter, is a toothless pitbull chained to the White House porch of a president who has forgotten his promises.

Silver, in his piece, points out something Obama said during his campaign in 2008.

"I strongly favor diversity of ownership of outlets and protection against the excessive concentration of power in the hands of any one corporation, interest or small group. I strongly believe that all citizens should be able to receive information from the broadest range of sources."

I wish that Obama were around right now.

Fistfuls of Tech! is a weekly column on all things technology. For more FOT! check out FistfulsofTech.fiusm.com.

THIS WEEKEND

FRIDAY, JAN. 21

SENATE VACANT SEATS APPLICATION DEADLINE

MMC Senate has seats open for the following colleges:

- *1 for Nursing and Health Sciences
- *1 for Business Administration
- *1 for Honors College

WHEN: 8:30 a.m.-5 p.m.
WHERE: GC 211

ABRACADABRA ART EXHIBITION



At "Abracadabra: The Fourth Annual Fund-raising Art Exhibition" over 100 works of art will be on display at the center.

WHEN: 6 p.m.
HOW MUCH: \$10
WHERE: Art and Culture Center of Hollywood

GREG LEMOND



LeMond is the first American to win cycling's Holy Grail.

WHEN: 7 p.m.
HOW MUCH: \$10
WHERE: The Wolfsonian

RUBY SUNRISE



Setting off from a farm in Indiana, a young girl named Ruby struggles to turn her dream of the first all-electrical television system into a reality.

WHEN: 8 p.m. 2pm Sun
HOW MUCH: \$10 students, \$12 seniors, FIU faculty and staff, \$15 general admission
WHERE: FIU Herbert and Nicole Wertheim Performing Arts Center, Main Stage

SATURDAY, JAN. 22

FIU SCHOOL OF MUSIC AT BISCAYNE BAY: "LATIN JAZZ!"



The FIU Latin Jazz ensemble performs under the direction of Mike Orta.

WHEN: 7:30 p.m.
HOW MUCH: \$20 at the door, \$30 for reserve seating, \$10 for Sunny Isles Beach residents
WHERE: Sunny Isles Beach Amphitheater

MIAMI HEAT VS. TORONTO RAPTORS



WHEN: 7:30 p.m.
HOW MUCH: Start at \$10
WHERE: American Airlines Arena

CHRISTIANS ON CAMPUS-LOVE FEAST

We will be having dinner, singing and just enjoy the Lord together with other college-age students.

WHEN: 6:30-9:30 p.m.
HOW MUCH: Free
WHERE: MMC Faculty Club Room

RUBY SUNRISE



WHEN: 8 p.m.
HOW MUCH: \$10 students, \$12 seniors, FIU faculty and staff, \$15 general admission
WHERE: FIU Herbert and Nicole Wertheim Performing Arts Center, Main Stage

SUNDAY, JAN. 23

SCOOP ON POOP



If you're one of the first 100 guests at the "Scoop on Poop" exhibit at Zoo Miami, you'll score a free T-shirt that reads Poop Happens.

WHEN: 9:30 a.m.
HOW MUCH: \$15.95 for adults, \$11.95 for kids. Children under 2 get in free
WHERE: Zoo Miami

SIGMA STUDY SESSIONS

A place for students to come and complete their work or study for any upcoming tests, quizzes, etc.

WHEN: 5-7 p.m.
HOW MUCH: Free
WHERE: Graham Center, in front of Bustelo and Burger King

RUBY SUNRISE



WHEN: 2 p.m.
HOW MUCH: \$10 students, \$12 seniors, FIU faculty and staff, \$15 general admission
WHERE: FIU Herbert and Nicole Wertheim Performing Arts Center, Main Stage

KDP MEET AND GREET POTLUCK

Get to know your fellow eboard and members while enjoying some fun at the park.

WHEN: 12-4 p.m.
WHERE: Ruben Dario Park

Sexuality still taboo topic despite media

PAOLO RAMOS
Staff Writer

With the scantily clad female musicians in the industry today, the sexually explicit lyrics of R&B crooners like Trey Songz and the rampant promiscuity of the cast of "Jersey Shore", one would think that, as a culture, America has embraced its sexuality. This could not be further from the truth.

In reality, most people, especially those in the younger generation, are clueless as to how to adequately approach their own sexuality, let alone the sensationalized interpretation of it in the media.

While it is great that the media have embraced a true connection with the urges and pleasures the human body can experience, they fail to drive the point home in an effective and positive way. The trend in current pop culture is leaning toward promiscuity and impulsive behavior rather than a more grounded and constructive attitude. There is no art or grace to it, only mindless and repetitive fluff that more often than not gets people into more trouble than they can handle.

To the trained mind, it becomes less surprising to observe the rise in teen pregnancies and drunk-driving accidents when today's

pop culture encourages sex, drugs and alcohol in the excess.

There is an inelastic perspective that the media have formed and directed toward young people. Women are expected to either be easy or fiercely independent while men are expected to be aggressive and disrespectful toward women. There is no middle ground, and those who fall out of the loop are left confused and anxious. This translates in a negative way across the spectrum.

On the other side of this flashy embodiment of perceived sexuality is a confused person struggling to form his or her own identity. This results in a skewed attitude toward sexuality that undercuts its value and importance.

There is also a counter problem to the oversexualized attitude in the media today, and that is the lack of education at home. With the increasing availability of sexual content in the media, parents and other authority figures are at a loss to adequately tackle the problem before it gets out of control. Anybody with a computer can access such content, and such technology is becoming increasingly available to younger and younger age groups.

The biggest problem, however, is the indifference most parents have toward the content to which

BLOWING SMOKE



MELODY ALEMAN/THE BEACON

their kids are exposed. Most parents let their children have free reign of their cell phones and laptops not knowing how simple it is for the children to come across content that is too mature for them to handle.

There is also a lack of discussion going on, not just within families but within society as well. Schools tackle sexual education at the minimal level, barely touching upon the most important issues that younger generations now face as a result of the increasing exposure to mature content. This

is reflected in the poor decisions that many young people are now making, which result in teenage pregnancies and sexually transmitted diseases. Ironically, and in spite of the wealth of information provided by the Internet, parents and authority figures lack the initiative to keep up with the already sexually charged younger generation.

Abstinence-only sex education is, unfortunately, the primary resource that most young people have, both at home and in society. Most do not learn about the true

impact of unsafe decisions either until college or until they are slapped with a pregnancy or a sexually transmitted disease of their own.

There is a definite distinction between what young people are exposed to and how they interpret it, and it is becoming increasingly difficult to reconcile the two. There is a need for more open forums of discussion, not just at home, but throughout society where sexuality is concerned as the media penetrate into the ever-shrinking sphere of childhood.

LETTER TO THE EDITOR

University worlds behind in safety, tolerance, health

JAMES RICHARDSON

Despite all the arguments for, against, and indifferent regarding the recent smoking ban on campus, the big picture isn't the smoking ban at all. It's the priorities and principles the university chooses to employ in its mission to become "World's Ahead."

The consistent rhetoric of these objectives includes promoting a safe, inclusive, and healthy environment. Sadly, the university has failed on all accounts.

Safety is an issue that concerns all students. Despite a stabbing, cars being broken into, laptops stolen, and a recent armed robbery, I personally witnessed an FIU police officer chatting on Facebook in his patrol car on Tuesday rather than promoting a safe environment by doing his job.

Additionally, many students have

expressed that notifications regarding the armed robbery didn't occur until after it was "deemed" safe to be on campus.

The university continues to employ Target as a corporate sponsor for its Target Wednesday After Hours sessions at the Frost Art Museum (as well as other events on campus), yet Target continues to be targeted by the Human Rights Campaign (which began last summer) which includes a nation-wide boycott of the company for political donations to anti-LGBT rights candidates.

Despite ostracizing the LGBT community on campus with its continued relationship with Target, the university has additionally ostracized smokers by making them social martyrs on campus.

In terms of healthy, this has to be the biggest oxymoron the administration has employed. Despite the constant message of

healthier choices on campus, the end result including dining additions such as Moe's, Dunkin Donuts, Papa John's, and Chili's. In addition, the university employs longstanding choices such as Starbucks and Burger King. I can't forget Pepsi, whose sugary soda logo is promoted all over campus since they are a corporate sponsor of the university. The university also accepts alcohol consumption on campus.

The addition of Chili's (complete with alcohol selections), paralleled by rampant alcohol consumption before, during, and after social events and football games on campus, leads me to believe that the underage drinking shenanigans of SGA is merely a product of the principles and priorities the university employs.

The university put the icing on the cake by installing a "socially enforced" nanny state courtesy of the smoking ban. I find

the hypocrisy of this most interesting as state & federal tax revenue from cigarette sales is a funding source of the university.

In becoming "World's Ahead", it's very plain to see that the priorities and principles of the university has nothing to do with fostering a safe, healthy, and inclusive learning environment.

It's purely all about the revenue. I have drastically lost much of my pride as a Panther because I'm seen more as a dollar sign than a valued stakeholder.

I'll expect the alumni solicitation to build the new FIU gambling casino after I graduate since the university gambles with the students safety, health, and sense of belonging at the priority of becoming world's ahead of everyone else's pocketbooks.

James Richardson, senior, is an international business major.

DISCLAIMER

The opinions presented within this page do not represent the views of The Beacon Editorial Board. These views are separate from editorials and reflect individual perspectives of contributing writers and/or members of the University community.

EDITORIAL POLICY

Editorials are the unified voice of the editorial board, which is composed of the editor in chief, management, and the editors of each of the five sections. The Beacon welcomes any letters (500 words maximum) regarding or in response to its editorials, send them to opinion@fiusm.com

SEND US YOUR LETTERS

Got a problem with parking? Want to give kudos to faculty? Or do you just have something to say about FIU? Send your thoughts (500 words maximum) in to opinion@fiusm.com or drop by our offices at either GC 210 or WUC 124. With your letter, be sure to include your name, major and year.



Gathering Opinions Generating Discussion

Tuesdays and Thursdays from 10 a.m. to 11 a.m.
95.3 FM, 88.1 FM, 96.9 FM or online at FIUSM.com
Call in at (305) 348-3575
"Like" us on Facebook



HAITI

Ex-dictator out of his hotel

Haitian police took ex-dictator Jean-Claude Duvalier out of his hotel on Jan. 18 without saying whether he was being detained for crimes committed under his brutal regime.



GUATEMALA

Colom calls Menchu 'a fabrication'

A newly leaked U.S. diplomatic cable says Guatemalan President Alvaro Colom described Nobel Peace Prize laureate Rigoberta Menchu as a "fabrication" of a French anthropologist.



MEXICO

Hospital announced near capital

Partners in Health, a Boston-based organization, and Haitian health officials have announced plans for a \$15 million teaching hospital north of the earthquake-battered capital.

TUESDAY TIMES ROUNDTABLE

First roundtable was a first amendment discussion

PNINIT COHEN
Contributing Writer

The topic at this semester's first ever Tuesday Times Roundtable at the Biscayne Bay Campus was "Name that Freedom." Students and faculty had the chance to openly discuss current events with each other in an open forum.

Vice Provost Steven Moll, an FIU-MDC Wesley intern and five students were among some of the attendees of the discussion dealing with the First Amendment and Americans' basic freedoms. Librarian Lauren Christos moder-

ated the roundtable.

"It's important to know the freedoms the constitution gives us," said Christos after citing a research poll which found that 52 percent of respondents believe the First Amendment declares our country as a Christian nation. "Are you offended by that?"

Lelieka Murdoch, transfer student majoring in public relations eyed over the exact wording of the First Amendment. "It's so vague - I can see why every person interprets it differently," she said.

The conversation ranged from

freedom of religion to the current war to Americans' attitude toward censorship.

"Why is there a big fuss over 6,000 deaths in the war while almost 60,000 people die every year from car accidents and gun accidents?" Moll asked. The comment spurred a dialogue among the group.

Murdoch argued it was because of the way the media frames the different issues.

"We think of car crashes as accidents so we don't bother to get angry about it the way we do about soldiers dying in a publi-

cized war," she said.

Faculty members were not the only ones provoking sensitive conversations.

"I want to know why everyone thinks the First Amendment would not pass in today's government," said Julie Walker, intern at FIU-MDC Wesley, a Methodist student ministry of both FIU and Miami-Dade College.

Walker asked question after question provoking a rich conversation, while Vice Provost Moll, Murdoch and Christos dominated the conversation.

"If we have freedom of

speech, why do we have to have a designated free speech area on campus?" asked Walker.

Moll insisted the entire campus is a free speech zone.

"Now if you want to protest, we have a designated area by the flag poll," Moll said. "Everyone has the right to protest, but we must do it in a way that allows everything else to continue as planned."

The roundtables, which take place Tuesdays at 12:30 p.m. in WUC 159, set a stage for a conversational debate among all levels of faculty and students.

WEEK OF WELCOME



ELIZABETH BRUNA PINEDA/THE BEACON



DANTE WILLIAMS/THE BEACON



JESSICA PEREZ/THE BEACON

Left: Dan Savage (left), founder of the "It Gets Better Project," talks to those who asked him for personal advice after his talk on Jan. 12 in the WUC Ballrooms. Center: Sailesh the Hypnotist (left) puts students in a slow-dance trance during his show Jan. 13 WUC Theater. Right: Students and staff get food at the Welcome Barbeque in Panther Square on January 10. The event, sponsored by the Student Organization Council, welcomed new and returning Panthers to the Spring 2011 semester.

IMPROMPTU

ArtOfficial rhymes their way to downtown lounge

Welcome back to a lovely Spring semester, but most importantly to another session of Impromptu. This bi-weekly column allows you, the average student reader, to hear about the underground musical events around our own city.

COLUMNIST



YAZMINE GRANTHON

Events ranging from indie rockers, jazz beatniks, and hip-hop socialists lie right under our noses, so let me plan your weekend while you freakishly hit the books.

This issue kicks off with a new location that showcases local bands. Bardot, a downtown lounge, showcases ArtOfficial Saturday, Jan. 21 at 11 p.m.

Funk-jazz infused ArtOfficial even question themselves, "What does a live band

with two emcees sound like?"

All the Miami-based jazz members - Danny Perez on keys, Manny Patino on drums, Ralf Valencia on bass, and Keith Cooper on saxophone - are infused with hip-hop vocals. Newsense and Logics are the remnants of two previous bands, groove-based Defonce, and the hip-hop crew Soul-What. Imagine The Roots but with a jazzier edge to grasp exactly what this band is ready to offer you.

ArtOfficial has shared the stage with N.E.R.D., Pharaoh Monch, and even participated in the 2007 Rock The Bells festival headlined by both Wu Tang Clan and Nas.

In 2008, losing by a high-pitched whistle, the group was shy of the grand prize to perform at Lollapalooza Musical Festival featuring Radiohead and Rage Against The Machine, but came back hard to win the 2009 Florida Grammy Showcase.

"Fist Fights and Foot Races," distributed

in Japan via Media Factory, follows their independently released EP "Stranger." It has proved to be a hot seller since its release in early April 2008 peaking at number four on the Tower Records Charts. ArtOfficial is working on its next album release titled "Misfits, Scholars, and Mystics."

"ArtOfficial hustles harder than any young Miami band. In its one-and-a-half years of existence, the band has played 150 shows, established a killer event to call their own and built a fan base that follows it wherever it plays" according to an article from 944.com magazine.

If you're not transformed by the roaring sax carrying the melody, then listen to the background riffs Danny "Keys" on synthesizer releases, or the upbeat drum phrases and intricate bass line that all the members easily place there following each other like a drum corps.

Rhythmically filled verses like: "if I

could, then I would, but I guess so I won't, I got better things to do with this Bottle of Hope," or "this ain't rappin' it's word bending" direct the "drummers" to the emotions us as the audience are supposed to feel.

Their lyrical intelligence infused with funky jazz created a synergy called ArtOfficial.

ARTOFFICIAL

- Time: 11 p.m.
- When: Jan. 21
- Where: 3456 North Miami Avenue
- How much: \$10