

Good luck on finals. Don't forget to spin the cube!

# THE BEACON

A Forum for Free Student Expression at Florida International University

Vol. 21, Issue 47

www.fiusm.com

December 5, 2008

## NEW STAFF

Green Coordinator hired

## ATTENTION SHOPPERS

Hunt for deals leads to death

## LIKE A VIRGIN

Sticky and Sweet Tour a success

## LAST STAND

Football closes out '08 campaign

AT THE BAY PAGE 3

OPINION PAGE 4

LIFE! PAGE 5

SPORTS PAGE 8

# Students get the chance to preview new art museum

ELSIE PUIG  
Staff Writer

On Dec. 3, the new Frost Art Museum held a special event exclusively for University students.

Sponsored by Target, museum visitors were greeted to the sounds of a live DJ and a tent filled with free food such as pasta, hot dogs and hamburgers. Inside the museum, students were greeted with free merchandise, among them towels, pens and frisbees.

Abby Araya, a freshman and a Student Government Association intern, was not able to see the entire museum but commented on the museum's organization.

"The museum looks professional, it looks like a real museum," said Araya. "I liked that they had variations in the type of art."

Araya hopes to return in the near future for other events and have the chance to look at other works of art more thoroughly.

However, some students felt that some aspects of the event were out of place in a cultural setting.

"The music was a little too much, it tried too hard to attract young people," said Oscar Lombana-Sanchez, a political science major.

Wendy Ordonez, an art education major and docent, explained the museum would be notifying students who want to attend future events.

"We'll be sending regular updates through the University e-mail to those who signed up at the event," Ordonez said.

**I'm really impressed with the space and the way the light can come in. The art can breathe, the [museum] gives it a life ...**

Susan Stoller, member  
Frost Art Museum

floor architectural masterpiece to bask in the signature natural light that brings vibrancy to the art being displayed.

"The architecture is so avant-garde," said Carlos Calviz, an architect from Colombia, as he pointed to the wide walls that displayed the art.

Susan Stoller, executive director of the Academy of St. Louis, stood gazing contemplatively at Robert Motherwell's "Wall Painting III" in the gallery exhibiting the Modern Masters collection from the Smithsonian American Art Museum.

### OPENING DAY

When the Patricia and Phillip Frost Art Museum made its debut Nov. 29, the University Avenue of the Arts was blessed with its crown jewel.

Students, staff, patrons, art connoisseurs and artists strolled through the halls of the three-



VICTORIA LYNCH/THE BEACON

**EYE OF THE BEHOLDER:** Senior Cindy Zamorano looks at Manuel Carbonell's artwork *Ritual and Rhythm* at the Frost Art Museum's Student BBQ on Dec. 3.

"I'm really impressed with the space and the way the light can come in," said Stoller who, along with her husband Henry Stoller, has been a supporter of the arts in Miami and is a member of the Frost Art Museum. "The art can breathe. The [museum] gives it a life, which often times is cramped."

The Modern Masters collection seemed a unanimous favorite among those who attended.

Victoria Mecklenberg, senior curator at the Smithsonian American Art Museum, who attended the grand opening, praised those behind the scenes.

"It is like the petals of the flower that all come together at the center," said Mecklenberg. "It all seems so effortless, but we all know it was not."

Mecklenberg remembers walking through the building with Patricia Frost when it was still under construction and thinking up new possibilities for the museum.

"It was a fabulous building, and though it would be great to do a show from our collection, it just seemed like the logical next step," Mecklenberg said.

The Modern Masters collection exhibits pieces from abstract artists of the 1950s into three themes that trace the plot of a larger story in art history.

"This one has to be one of my favorites," said General Counsel Henry Stoller pointing to Hans Hoffman's "Afterglow." "It just has so much color and vibrancy."

Stoller occupied his time studying each art piece while he waited

patiently for the 2 p.m. group tour to start, guided by Gaby Portela, a junior majoring in art history.

Portela started the tour by guiding the group through the Andrew Reach exhibition, which drew immense interest from the guests.

The group then made its way through the second floor exhibiting the Modern Masters and permanent collections and through the third floor which displayed the emerging artist exhibitions of Luisa Basnuevo, Florencio Gelabert and John Henry.

A steady stream of people walked through the doors throughout the night, making it a successful debut.

"We never expected this much people to show up," said Nicole Espaillet, a sophomore majoring in art history.

# U.S. higher education not affordable, survey shows

JUSTIN POPE  
AP Wire

An independent report on American higher education flunks all but one state when it comes to affordability — an embarrassing verdict that is unlikely to improve as the economy contracts.

The biennial study by the National Center for Public Policy and Higher Education, which evaluates how well higher education is serving the public, handed out Fs for affordability to 49 states, up from 43 two years ago.

Only California received a passing grade in the category, a C, thanks to its relatively inexpensive community colleges.

measurements to give states grades, from A to F, on the performance of their public and private colleges.

The affordability grade is based on how much of the average family's income it costs to go to college.

Almost everywhere, that figure is up, according to the survey. Only two states — New York and Tennessee — have made even minimal improvements since 2000, but they're still considered to be failing.

Everywhere else, families must fork over a greater percentage of their income to pay for college.

In Illinois, the average cost attending a public four-year college has jumped from 19 percent of family's income in 1999-2000 to 35 percent in 2007-2008, and

in Pennsylvania, from 29 percent to 41 percent.

Low-income families have been hardest hit. Nationally, enrollment at a local public college costs families in the top fifth of income just 9 percent of their earnings, while families from the bottom fifth pay 55 percent — up from 39 percent in 1999-2000.

And that's after accounting for financial aid, which is increasingly being used to lure high-achieving students who boost a school's reputation, but who don't need help to go to college.

The problem seems likely to worsen as the economy does, said Patrick Callan, the center's president.

Historically during downturns, "states make disproportionate cuts in higher edu-

cation and, in return for the colleges taking them gracefully, allow them to raise tuition," Callan said.

"If we handle this recession like we've handled others, we will see that this gets worse."

Scott Cristal of Columbia, Mo., said he wasn't surprised by the study's findings. Cristal, who has sent two daughters to college and has another two yet to pay for, said that he is trying to expand his business to help pay the tuition bills, but that it's been hard because of the slowing economy.

"We're going to play it by ear, be optimistic, hope for the best and just ride it

EDUCATION, page 2

**NEWS FLASH**

FIU

**College of Architecture welcomes a new director of development**

The College of Architecture and the Arts has hired Kristina Davis-Gregg as their new director of development, according to a memorandum sent by the department.

The Washington State alumna brings more than 10 years of college fundraising experience and seven years as a professional educator. According to the memo, Davis-Gregg has “successfully implemented and managed major gift fundraising programs, developed global strategies to fund student activities, and consistently identified, cultivated and solicited major gift prospects and donors.”

As development coordinator for Washington State University’s College of Pharmacy, she was able to raise more than \$275 million in gifts over a five-year period.

She also spent a two-year tenure as director of Development at Southeastern University, where Gregg was able to raise unrestricted annual gifts from \$250,000 to \$1 million annually.

**University survey finds more Cuban Americans are against the U. S. embargo**

A new poll released by the University’s Institute for Public Opinion shows massive differences in opinion within the Cuban American community concerning the U.S. Embargo against the island nation.

One result from the poll shows an important shift in opinion: 55 percent of Cuban Americans think the U.S. embargo against Cuba should end.

The result demonstrates a continuing change in the Cuban American community and reflects a generational rift between those Cubans who arrived in the U.S. in the 1960s and those who came to the U.S. after the Mariel Boatlift in 1980.

The poll, which was conducted along with the Brookings Institution, measured the responses of 800 Cuban Americans in Miami-Dade County on a range of issues that included the U.S. trade embargo and the U.S. travel ban.

The 2008 Cuba/U.S. Transition Poll was funded by the Brookings Institution and the Cuba Study Group.

– Compiled by Julio Menache

**KEEN ON...**



VICTORIA LYNCH/THE BEACON

**PROMOTING GREEN:** Ian Wogan (left), Celia Izaguirre (middle) and Ric Soto (right), part of FIU Garden Club, make and sell smoothies made from organic fruit on Dec. 3, at the first Organic Farmer’s Market.

**College completion rates still low despite better preparedness**

**EDUCATION, page 2**

out as best we can,” Cristal said. “I think that’s what everybody in America’s doing right now.”

States fared modestly better in other categories such as participation, where no state failed and about half the states earned As or Bs — comparable to the report two years ago.

One reason for the uptick is that more students are taking rigorous college-prep courses, the study found.

In Texas, for instance, the percentage of high schoolers taking at least one upper-level science course

has nearly tripled from 20 percent to 56 percent.

But better preparation for college hasn’t translated into better enrollment or completion, with only two states — Arizona and Iowa — receiving an A for participation in higher education.

And the discrepancy in enrollment between states is still great: Forty-four percent of young Iowans are in college, while just 18 percent of their counterparts in Alaska — one of three states to get an F in the category — are enrolled.

Callan said the United States is at best standing still while other countries pass it in areas like college enrollment and completion.

And as higher education fails to keep up with population growth, the specter lurks of new generations less educated than their Baby Boomer predecessors.

“The educational strength of the American population is in

**Average increase cost of attending four-year college**

- In Illinois, average cost of attending college jumped from 19 percent to 35.
- Pennsylvania jumped from 29 percent to 41.

the group that’s about to retire,” Callan said. “In the rest of the world it’s the group that’s gone to college since 1990.”

**THE BEACON**

**EDITORIAL BOARD**

- |                     |                              |
|---------------------|------------------------------|
| CHARLIE GRAU        | EDITOR IN CHIEF              |
| CHRISTOPHER NECUZE  | PRODUCTION MANAGER           |
| DANIELLA BACIGALUPO | NEWS DIRECTOR                |
| JULIA CARDENUTO     | BBC MANAGING EDITOR          |
| JONATHAN DAVILA     | LIFE! EDITOR                 |
| ERIC FELDMAN        | OPINION EDITOR               |
| ANDREW JULIAN       | SPORTS DIRECTOR              |
| VICTORIA LYNCH      | PHOTO EDITOR                 |
| SERGIO BONILLA      | ASST. NEWS DIRECTOR          |
| JULIO MENACHE       | ASST. NEWS DIRECTOR          |
| PAMELA DUQUE        | ASST. NEWS DIRECTOR          |
| JONATHAN RAMOS      | ASST. SPORTS DIRECTOR        |
| JONATHAN ALPERT     | ASST. SPORTS DIRECTOR        |
| IRIS FEBRES         | ASST. OPINION EDITOR         |
| PARADISE AFSHAR     | BBC LIFE! EDITOR             |
| CHRIS TOWERS        | ASST. LIFE! EDITOR           |
| MARIANA OCHOA       | ASST. LIFE! EDITOR           |
| GIO GUADARRAMA      | ASST. PHOTO EDITOR           |
| NATHAN VALENTINE    | BBC PHOTO EDITOR             |
| SARA BONE           | DESIGNER                     |
| ANGELINA EXPOSITO   | DESIGNER                     |
| JESSICA MAYA        | DESIGNER                     |
| ISAAC SORIA         | DESIGNER                     |
| LEONCIO ALVAREZ     | COPY CHIEF                   |
| PAULA GARCIA        | COPY EDITOR                  |
| CARLA GARCIA        | COPY EDITOR                  |
| ASHLYN TOLEDO       | COPY EDITOR                  |
| DELLIE HUTCHINSON   | COPY EDITOR                  |
| ERIKA PEREZ         | COPY EDITOR                  |
| JOSH TANDLICH       | COPY EDITOR                  |
| ROBERT VINCENS      | COPY EDITOR                  |
| ROSALYN DELGADO     | RECRUITMENT DIRECTOR         |
| SHERVIN BAIN        | RECRUITMENT EDITOR           |
| PAULO O’ SWATH      | CALENDAR EDITOR              |
| TATIANA CANTILLO    | BUSINESS MANAGER             |
| ROBERT JAROSS       | DIRECTOR OF STUDENT MEDIA    |
| ALFRED SOTO         | ASST. STUDENT MEDIA DIRECTOR |



**INFORMATION**

The Beacon office is located in the Graham Center, room 210, at the University Park campus. Questions regarding display advertising and billing should be directed to the Advertising Manager at 305-348-2709. Mailing address: Graham Center, room 210, Miami, FL 33199. Fax number is 305-348-2712. Biscayne Bay Campus is 305-919-4722. Office hours are 9 a.m. – 4:30 p.m., Monday through Friday. E-mail: [Beacon@fiu.edu](mailto:Beacon@fiu.edu). Visit us online at: [www.fiusm.com](http://www.fiusm.com)

The Beacon is published on Mondays, Wednesdays and Fridays during the Fall and Spring semesters and once a week during Summer B. One copy per person. Additional copies are 25 cents. The Beacon is not responsible for the content of ads. Ad content is the sole responsibility of the company or vendor. The Beacon is an editorially independent newspaper partially funded by student and services fees that are appropriated by Student Government.

**STUDENT SPECIAL**



**2 MONTHS FREE RENT!!  
SPACIOUS APARTMENTS  
CLOSE TO CAMPUS**  
Call: 888-612-8979

Lago Club Apts. \* 12375 SW 18th St., Miami, FL

**CORRECTIONS**

In the issue dated Dec. 1, 2008, the article titled “World Aids day: opportunity to raise awareness” spelled Ann Goraczko as Anne Gorosco.

The Beacon will gladly change any errors. Call our UP office at 305-348-2709 or BBC at 305-919-4722.

Do you like News?

Cover what’s happening at your University?

Fill out an application in GC 210 or WUC 124

OFFICE OF THE VICE PROVOST

## New environmental coordinator on board

**PAMELA DUQUE**  
Asst. News Director

The Biscayne Bay Campus wants to protect its mangrove and coastal areas, and a new environmental coordinator has been hired to get the word out.

"As much as there is a potential, it's not going to happen without continuous engagement of students," said Rebecca Dinar, outreach coordinator in the Office of the Vice Provost. "Our campus is the only campus in the country next to a mangrove, and we have a special responsibility to take care of it."

Jennifer Grimm, a former City of Miami employee, is the new BBC environmental coordinator. She was hired to work along the Coastal Environmental Initiative, an environmental plan established in January 2007, to "see what we can do to enhance the coastal environmen-

tal theme at the Biscayne Bay Campus," according to Peter Craumer, chair of the Coastal Environmental Initiative Committee.

Grimm, who has a bachelor's degree in marine biology from the University of San Diego, and a master's in marine affairs and policy from the University of Miami, was hired Nov. 17 to plan activities and conduct research for campus restoration projects.

"Her job is to help students, faculty and staff become more environmentally aware and responsible," Dinar said.

Grimm will work closely with the different schools based at BBC, and with SGC-BBC in order to reach students.

"It is an awesome opportunity to be able to work at this campus," said Grimm. "It's a great place to work and develop projects to help the environment."

Prior to coming to the

University, Grimm worked for the City of Miami Sustainable Initiative Office, which coordinates Miami's environmental programs to make the city "a model for environmental best practices," according to its official Web site.

Although plans to start reaching students and implementing new ways to protect BBC's mangroves and coastal areas have not been made yet, Grimm is "actively in a learning and listening mode," according to Dinar.

"Our main goal is to involve students and to help them develop more awareness about the environment," Craumer said.

In April 2007, the Office of the Vice Provost, with the help of the Coastal Initiative Committee, submitted a proposal to Jane's Trust for an environmental studies initiative to educate students about coastal and marine related topics.

## THAT LOOK WAS PRICELESS



NATHAN VALENTINE/THE BEACON

**PICTURE THIS:** Ana Pierre-Louis, a junior hospitality management major, and Kertus Tousseint, a senior sociology major, select the options for their impromptu portrait session in the photo booth provided by All Star Events for SPC-BBC's pre-final fun on Dec. 2

In May of this year, the Trust awarded a \$140,000, two-year grant to the University, which pays for Craumer and Grimm's salaries.

Jane's Trust was created in 2002, and it awards grants to programs that help "underserved populations and disadvantaged communities," according to its official Web site, including projects to "protect and enhance the natural environment and to conserve natural resources in its geographical areas of interest."

The Coastal Environmental

Initiative Committee, which is composed of faculty members, proposed a Coastal and Marine Affairs Certificate, which would be multidisciplinary and involve different schools as a way of directly reaching students and educating them about the environment.

The School of Hospitality and Tourism Management, College of Architecture and Arts, College of Arts and Sciences, and the School of Journalism and Mass Communication have already been included in the

curriculum, but according to Craumer, who is also the faculty coordinator, the Coastal Environmental Initiative Committee is "seeking broader participation."

"We are privileged to be in this beautiful location. Students at BBC are environmentally engaged, and we want to couple the energy and enthusiasm of students with our geography to make BBC one of the top environmentally-friendly campuses in the country," Dinar said.

  
**SIGMA KAPPA SORORITY**  
ΣΚ

### Our Sisterhood is Shining Brighter

Congratulations  
to the initiates of  
our newest  
Sigma Kappa Chapter

Florida International University  
December 6, 2008

[www.sigmakappa.org](http://www.sigmakappa.org)

Sigma Kappa membership is based on a mutual selection process.

## Midnight Breakfast for late night study breaks

**DOUGLAS FORTE**  
Contributing Writer

At the end of the semester, many students, like junior international relations major Kerry-Ann Carby, will be in the library studying for exams.

In an effort to provide a hot meal for students like Carby, who are studying late on campus, BBC Campus Life, Campus Recreation and Student Government Association will be providing a complementary breakfast during their end of the semester event, the Midnight Breakfast.

"You eat your food, you're happy for an hour and then go back to studying," said Carby, who attended the event during the spring semester. "I am going again this year."

The Midnight Breakfast will take place Dec. 8. in Panther Square from 11 p.m. to 2 a.m.

"Students can come over, take a little break from their studying and have some scrumptious breakfast," said Joanne Oates, graduate assistant at Campus Life and Orientation. "It's a great opportunity to recollect their thoughts and relax."

At the event, students are treated to an assortment of breakfast foods and drinks. All refreshments at the event will be provided by Aramark, the University's food

service provider.

"There's so many different kinds of foods- eggs, bacon, sausage, waffles, toast, juice, bagels and the list goes on," said junior Joe L. Mintz, a mathematics major, who attended the event during the spring term. "There's something for everyone."

In addition to breakfast, there will also be music, games, massages, meditation sessions and Zumba classes, which are part of a dance aerobic program.

Giveaways, such as mugs with the name of the event engraved on them, and exam materials, such as blue books, will be provided to the first 150 people who attend the event.

Oates said that the breakfast is usually a popular event among students who are studying on campus late at night.

"Normally, around 200 students show up to breakfast," Oates said.

Mintz is not attending the event this year due to scheduling conflicts, but encourages any student who will be on campus to attend.

"They will have lots of fun, playing games and hanging out," said Mintz. "Besides, they pay for it in their tuition."

For more information about the Midnight Breakfast contact Campus Life at (305) 919-5804 or go to their office at the Wolfe University Center, room 141.

## DYING FOR DEALS

### Buyers forget morals while they splurge

**MATT RUCKMAN**  
Staff Writer

Last week on Black Friday, a 34-year-old named Jdimytai Damour was trampled to death by 2,000 rampaging shoppers in a New York State Walmart.

Damour, an employee, was responsible for opening store doors at 5 a.m. and was overcome by the resulting stampede. Damour, along with a pregnant woman and three others, was rushed to the hospital where he was later pronounced dead, killed by the mob.

I'm sure I'm not alone in the horror I felt upon hearing about this story. A man killed for presents, things – stuff.

No longer alive because of a \$9 Photo Collage-It Mug, forcibly deceased for a \$188 GPS System, killed for an \$18 Barbie Princess Tough Trike.

Sadly, these shopping conflicts are not isolated.

Two men shot each other to death at a Toys "R" Us store in Palm Desert, Calif., last Friday. A pregnant woman was injured in a shooting at an Atlanta mall last Saturday and armed robbers killed one man at an Express store in a suburban Miami mall this past Monday.

The issue of guilt arises from this discount-driven insanity. Who is to blame?

Could it be the economy as a whole, for heating up the national environment to such a boiling point that any spark could set it off, even in a toy store? Is it these stores like Walmart, for not providing adequate security on the busiest shopping day of the year, facing a lone man versus thousands of impatient shoppers?

When discounts are that deep, is it any surprise how cheap life is?

More likely though, it rests solely on the individual shop-

pers who seemingly left their humanity in the parking lot.

One shopper, Kimberly Cribbs, even recounted how others continued bargain-hunting even after they were told of the homicide.

"When they [officials] were saying they had to leave, that an employee got killed, people were yelling, 'I've been in line since yesterday morning.' They kept shopping," she said.

At what point while stepping

on a man's throat for some discount microwave does a shopper stop and realize maybe, just maybe they've lost perspective?

Alongside the violence, Damour's death sheds an all too bright light on what Christmas has become.

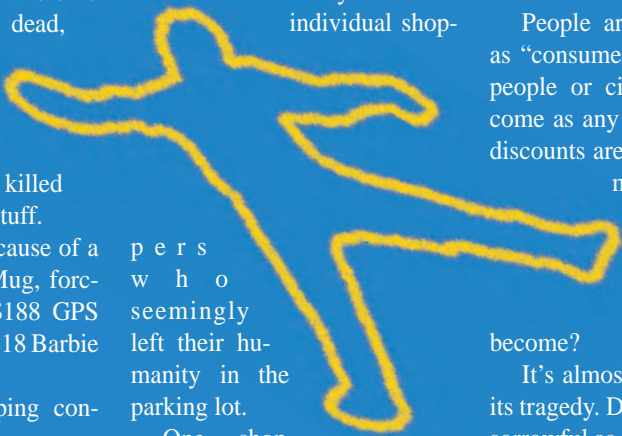
The sense of community and family have been replaced by Black Friday and Cyber Monday, and the holidays that were once spent with the recipients are now cashed in at "pick a store."

People are now referred to as "consumers" instead of, say, people or citizens. So does it come as any surprise that when discounts are that deep, and human interaction is that shallow, how cheapened has the Christmas season become?

It's almost Shakespearean in its tragedy. Damour's death is as sorrowful as old Julius Caesar's, stabbed by a dozen knives and who ended up having no one to blame but everyone around him.

*Et tu, America?*

*The Beacon is always shopping for what you think! Share your thoughts at [fiusm.com/opinion](http://fiusm.com/opinion) or send them to [opinion@fiusm.com](mailto:opinion@fiusm.com)*



## Prices To Die For?



Men's Wrangler Tough Jeans \$8



Bissell Compact Upright Vacuum \$28



Samsung 50" Plasma HDTV \$798

## 10th graders closer to college than ever

**JUAN CARLOS SANCHEZ**  
Staff Writer

High school is on the express lane.

Students are ready to go to college after tenth grade. According to a recent *TIME* magazine article published on Nov. 6, New Hampshire education officials would administer a test, and those that passed would be able to graduate from high school after their sophomore year.

The benefits of graduating students at an earlier age seem to be a win-win for everyone; it would save taxpayers money, lower dropout rates and prepare students at an accelerated pace.

Cutting out the last two years of high school for qualified students would save money.

Instead of wasting money on students that are reading and solving math problems at a college level, educators could use these resources to help those that are having difficulties.

It wouldn't be such a bad idea to start preparing college-bound students in middle school. By doing things this way, they would receive the same classes that they would in high school, just one or two years before. These programs already exist, but to a limited extent.

While algebra and geometry are offered, language arts, history and science seem to have been forgotten. Language arts could focus on philosophy and interpretations of famous novels. Also, geography could be more emphasized in the curriculum.

Students are legally required to remain in school until they are 16. If they were offered the option of going to college earlier, they might reconsider dropping out since, after all, they would only spend two years in high school.

College would offer the option of leaving their parents' house but for a good reason: teens would learn the responsibilities of adulthood and learn to value money and the importance

of a career. When living alone, students would have to work to pay the bills.

Critics might argue that in tenth grade students aren't ready to move on to college and hang out with a different crowd.

However, research from the University of Washington suggests otherwise. It says that teens that enter college when they are 12 to 14 perform well on an academic and social level.

Concerned parent Loida Rapado believes it's not worth the risk to take children to college at an advanced age.

"I don't see any point in doing that, everything is appropriate at its time. I believe that she wouldn't be mature enough," Rapado said.

However, some parents don't seem to mind their children going to college two years ahead, like Belkis Yera, who has a child in 7th grade.

"If my son passes the test because he is prepared, then I would be in favor of it. The test would be hard and measure the aptitude of my son to go to college," Yera said.

The United States keeps falling behind in education compared to other industrialized countries.

According to The 2006 National Report Card on Higher Education, Florida was among the worst states to graduate 9th graders in four years. It's one of the most expensive in tuition costs for low and middle income students, accounting for Bright Futures and financial aid.

In addition to this, Florida makes low investment in need-based financial aid compared with other top-performing states.

With global warming on the rise, a roller coaster economy and the need to solve medical diseases, it's time we stop creating robots and start getting them ready for a high-quality education. Graduating in tenth grade would prepare young professionals for the workforce and allow them to tackle these unresolved issues.



Visit [fiusm.com/opinion](http://fiusm.com/opinion) to read a column by the Director of Chabad FIU regarding the recent terror attacks in Mumbai, India.

## REVIEWS (YOU CAN USE)

### CONCERT

Madonna - Sticky and Sweet Tour ★★★★★

# STILL ON TOP

## No end in sight for the queen of pop's enduring rule

LEONCIO ALVAREZ  
Copy Chief

Last week Madonna gave a crowd of over 50,000 more reason to be thankful on Thanksgiving. Her Sticky and Sweet Tour made a stop at Dolphin Stadium and brought with it all the raunchiness, mind-blowing choreography and offensive hand gestures that are expected at a Madonna concert, minus the faux British accent.

The time on the ticket said 7:30 p.m. but that was unlikely. Traffic seemed almost unreal at first; all of these people just to see one person. If there was any doubt about Madonna's relevance, it has been cleared with this tour. This was just one date on a list of over 50 sold out stadiums she has done or will do.

Starting in Europe, Miami was her final U.S. show and, in the coming month, Madonna will take her tour to South America. She has already beaten her own record for top selling female live act of all time, according to *Billboard.com*, and the tour isn't even over yet. The wait seemed well worth it.

Madonna was all smiles as she took control of the stage,

and she would not subdue for the next two hours. At about 10 p.m. the lights were shut off and the stage began to take shape. Three LCD screens showed a piece of hard candy travelling through an array of conveyor belts and pipes in what seemed to be a candy factory.

After the colorful journey, Madonna appeared - on a black throne, legs wide apart of course - with her sex slaves, or dancers. "Candy Shop," a track from her new album, blasted through the speakers while Madonna made it clear to anyone in doubt that her sugar is still raw.

The next track, "Beat Goes On," saw a white 1935 Auburn Speedster plowing through the stage and a video backdrop of Kanye West in a sly black tuxedo. It hadn't even been ten minutes but Madonna made sure her audience was entertained every dance step of the way.

Madonna is known for revamping her older songs while showcasing her current material.

Her latest rendition of "Vogue" brought old and new together, mixing it up with the drums and brass of her chart topper, "4 Minutes." The crowd went haywire as soon as

the words "ladies with an attitude" came out of Madonna's mouth. She followed with another oldie, "Human Nature" where Britney Spears also made a video cameo inside an elevator while whispering the famous lines "express yourself, don't repress yourself."

The next part of the show was inspired by the late artist Keith Haring. Haring was a friend of Madonna and his art took center stage during a mix of "Get into the Groove." His colorful figurines filled the video screens while writing out the lyrics to the song. Sporting 80's inspired shorts and a hoodie, Madonna gyrated on a moving stripper pole atop DJ Enferno's turntable.

Making sure to pay homage to her rock roots, Madonna strapped on a guitar several times throughout the night. One time was during her classic, "Borderline," where she picked up a bright pink guitar and rocked out the simple chords that made her a household name.

During another new track, "She's Not Me," Madonna revisited her past as she broke away from it. She also asked the audience: "This one's for the ladies. Have you ever had a best friend that wanted to



MADONNA.COM

**BACK IN VOGUE:** The 50 year old pop legend stopped in Miami on her Sticky and Sweet tour.

do everything you wanted to do, including f\*\*\* your boyfriend?"

Dancers dressed in attire from past music videos posed on stage while Madonna wreaked havoc. She ends up tongue-tied with her "Like A Virgin" counterpart, later chok-

ing her with her wedding veil. This set ended with a fast paced version of "Music." Madonna's songs are constantly kept alive with new mixes and this one is sure to make appearances in clubs everywhere.

A Spanish inspired set was next up and, vocally, it was

Madonna's strongest. She sang about long distance love in "Miles Away," gave a gypsy inspired interpretation of "La Isla Bonita" and even dug out her tearjerker from *Evita*, "You Must Love Me," where she refused to let her band rush her.

To close the night Timbaland joined the stage during "4 Minutes" and the stadium turned into a gospel rave during "Like A Prayer." Madonna had everyone working their arms as hard as she does during "Ray of Light," demanding the crowd remain clapping while she asked a fan for a request. She sang two verses of "Material Girl" and went right into an awkwardly guitar heavy "Hung Up."

During the closer, "Give It 2 Me," Madonna and another unexpected guest Pharell Williams gave it to Miami. They sang: "They say that a good thing never lasts and that it has to fall. Those are the people that did not amount to much at all."

After 25 years on top of her game Madonna keeps proving that nothing is going to stop her. At 50, yes 50, she has no plans of slowing down. And why should she? She's Madonna.

### HAIRY DAN AND ACTIVE DAVE

BY JONATHAN ROBERTS AND ANDREW SANTIAGO

#### ACTIVE DAVE'S INSECURITY



### My Cousin Tony

by Alex Ferrer

#5



## diversions

### STOP THE PRESSES!

A COMIC BY IRIS AMELIA



### JOIN OUR STAFF!

The BEACON is always looking for talented and reliable individuals to join the staff. If you have an interest in writing, photography or even grammar, don't be shy.

Stop by one of our offices located in GC 210 and WUC 124.

## CONCERT

## Broken Social Scene ★★★★★

## Indie rock group brings spontaneity, variety to the stage

**MARIANA OCHOA**  
Asst. Life! Editor

Formed in 1999 by Kevin Drew and Brendan Canning, Broken Social Scene is the Justice League of indie rockers.

This experimental super group contains 19 Toronto based members.

The members of the group are highly successful in the indie rock scene with their solo careers and participation in other bands such as the well known Leslie Feist.

On Nov. 22 at Club Cinema, many of the Broken Social Scene members collaborated to make one very mind-titillating performance. Their music came to life on

stage in the most unforgettable manner.

Everything from the sound quality that Club Cinema provided to the psychedelic lighting added to the mood of the show.

Drew, founder of the super group, was a delightful frontman with his shaggy hair, warm personality and incredibly strong vocals.

It was obvious he was there for the same reason the fans were - to experience the music.

The show was upgraded into an even more incredible level with the accompaniment of sexy saxophones, violins and horns.

The song selection also made the show versatile because it featured songs to clap

along to and songs to be taken away with in a delicious trance.

Elizabeth Powell from the opening band, Land of Talk, also joined in to play with Broken Social Scene and added angelic vocals to an already heavenly sound.

The 19 members of the band were not all present that night, but that's the magic about this group of young musicians.

With their conflicting schedules, there are members that can't show up for specific shows, therefore each performance is different, making the music raw and unpredictable.

It was the kind of show where the fans and the band are going through the same emotion of euphoria.

The band fed off the audience while the audience fed off the band.

The band played for two hours straight without stopping and didn't leave the stage before coming back for an encore, as is the custom at shows.

Instead, they played until Club Cinema's curfew was reached.

It was, after all, their last show on their tour and they went out in a beautifully inspiring way.

That night, Broken Social Scene provided refreshingly uplifting nostalgic sounds within our current world of businessmen in suits, creating predictable formula products in the form of today's chart toppers.

## CD

## Anodize - "Signs of You" ★★★★★

## Love album combines rock, electronica, strong lyrics

**KIMBERLY C. ENGELHARDT**  
Staff Writer



get over the girl who never learned to appreciate him from the start.

As a result, we can safely call this a series of "please don't leave me," "I have to break up with you, but I don't want to" and "I'm hurt" songs, with an awesome and contagious beat.

On their first single, "Tuesday," Vito Lastayo, the lead singer, sings, "If you choose to walk away, then I'm not gonna be here on Tuesday."

He threatens the girl that he'll leave her, but the mere thought tortures him beyond

leased on Nov. 25.

Most songs in "Signs of You" are about relationships but they are relationships gone awry. Instead of having music and lyrics that reflect anger and frustration, the album seems to focus on the inner-workings and thoughts of a sensitive guy trying to

... The album seems to focus on the inner-workings and thoughts of a sensitive guy trying to get over the girl who never learned to appreciate him from the start.

belief: "Only a day away and every moment without her is murder."

More than anything, the song seems to be an operatic dialogue of despair between boy (the victim) and the heartless girl.

Although it's not really a happy song, the rhythm and beat makes the song come to

life with rays of sunshine. In contrast with "Tuesday," "Iris" is a very deep song full of imagery.

For my taste, the song is too descriptive and one can be easily lost in trying to understand what's going on. The song seems to focus on a painful moment in time. However, that moment isn't

a day or an hour: it seems like a minute frozen in time.

"To live in a tear forever, where there's no need to breathe."

Although it doesn't deal with human relationships directly, it's a powerful song that touches upon being alone and accepting that reality.

The rest of this great album is like a concoction of Linkin Park, Pink Floyd and OneRepublic.

It's a fusion of feel-good, rhythmic beats of the softer side of hard rock and the digital elements of electronica.

The lead singer's sweet, colorful story-telling voice adds even more color to this musical composition. Just add a martini, and you're set.

## WEEKEND CALENDAR

## FRIDAY • DEC. 5

WHAT: FIU Volleyball vs. Colorado State (NCAA Tournament)\*\*  
WHERE: University of Florida  
WHEN: 5 p.m.  
HOW MUCH: TBD

WHAT: Jason Mraz Concert  
WHERE: The Fillmore at Jackie Gleason Theater, 1700 Washington Avenue, Miami Beach  
WHEN: 7:30 p.m.  
HOW MUCH: \$47.50

WHAT: Pablo Francisco Comedy Show  
WHERE: The Miami Improv Comedy Club, 3390 Mary Street, Coconut Grove  
WHEN: 8:30 p.m. & 10:45 p.m.  
HOW MUCH: \$23.54

WHAT: Art Basel Miami Beach  
WHERE: Miami Beach Convention Center, 1901 Convention Center Drive, Miami Beach.  
WHEN: All day  
HOW MUCH: Prices Range from \$15 - \$75

WHAT: Ike & Val Woods Revue: Soul & Blues  
WHERE: The Van Dyke Cafe, 846 Lincoln Road, Miami Beach  
WHEN: 9 p.m.  
HOW MUCH: Prices Vary

\*\*NOTE: Listen to WRGP Radiate FM on 88.1, 95.3 & 96.9 FM for live game coverage, hosted by Andrew Julian for all FIU sporting events.

## SATURDAY • DEC. 6

WHAT: FIU Football vs. Western Kentucky University\*\*  
WHERE: FIU Stadium  
WHEN: 7 p.m.  
HOW MUCH: FREE with valid Student ID

WHAT: FIU Dance, VH 100 Artist Series.  
WHERE: FIU WPAC Studio Theater, 10910 S.W. 17 Street, Miami  
WHEN: 8:30 p.m.  
HOW MUCH: TBD

WHAT: Miami Heat vs. Oklahoma City Thunder (NBA)  
WHERE: American Airlines Arena, 601 Biscayne Boulevard, Miami.  
WHEN: 7:30 p.m.  
HOW MUCH: Ticket Prices Vary

WHAT: Florida Panthers vs. Boston Bruins (NHL)  
WHERE: Bank Atlantic Center, One Panther Parkway, Sunrise.  
WHEN: 7 p.m.  
HOW MUCH: Ticket Prices Vary

WHAT: The Gates of Choice  
WHERE: The New Theater, 4120 Laguna Street, Coral Gables.  
WHEN: 8 p.m.  
HOW MUCH: \$35 - \$40

WHAT: Of Montreal  
WHERE: Revolution, 200 W. Broward Boulevard, Ft. Lauderdale.  
WHEN: 6:30 p.m.  
HOW MUCH: Ticket Prices Vary

WHAT: Ft. Lauderdale Ghost Tour  
WHERE: S.E. 6th Avenue & Las Olas Boulevard, Ft. Lauderdale  
WHEN: 8:45 p.m.  
HOW MUCH: \$15

## SUNDAY • DEC. 7

WHAT: Art Basil Miami Beach  
WHERE: Miami Beach Convention Center, 1901 Convention Center Drive, Miami Beach  
WHEN: All day  
HOW MUCH: Prices Range from \$15 - \$75

WHAT: Art Miami  
WHERE: N.E. First Avenue, between N.E. 32nd & 31st Streets.  
WHEN: 11 a.m. - 5 p.m.  
HOW MUCH: \$15 - \$20

WHAT: Kulcha Shok Muzik presents A Night of Reggae with Four Dimensions and The Three of We  
WHERE: Jazid, 1342 Washington Avenue, Miami Beach.  
WHEN: 9 p.m.  
HOW MUCH: Prices Vary

WHAT: Holiday Fantasy of Lights  
WHERE: Tradewinds Park, 3600 W. Sample Road, Coconut Creek  
WHEN: 6 p.m. - 10 p.m.  
HOW MUCH: \$9 - \$12

WHAT: Pablo Francisco Comedy  
WHERE: The Miami Improv Comedy Club, 3390 Mary Street, Coconut Grove.  
WHEN: 8:30 p.m.  
HOW MUCH: \$23.54

\*\*NOTE: Listen to WRGP Radiate FM on 88.1, 95.3 & 96.9 FM for live game coverage, hosted by Andrew Julian for all FIU sporting events.

- Compiled by Paulo O'Swath

INTRACOASTAL

STUDENT SPECIAL

2 months FREE RENT!

On-site Waterfront pool, Billiard room, full service salon and high speed internet.

- Fully equipped fitness center
- 2 minute walk to the beach!

Call: 888-611-7868

**Sigma Kappa Sorority**  
would like to thank the  
**Greek Community** for their  
dedication and support!



**SIGMA KAPPA SORORITY**  
ΣΚ

# Golden Panthers exceeded expectations this year

How do you grade out a team that over performs exceptionally low expectations? The Golden Panthers football team will probably end up at 5-7, following this weekend's match up against the Western Kentucky Hilltoppers (2-9) at FIU Stadium. A four-win improvement, and matching the program's best win total has to be considered a success, but how much so? In assessing the season, is it fair to judge them by last year's team, or in a vacuum? If you judge them on expectations, then this season was a smashing success, given the one win predicted by most "experts."

People who knew more about the team had higher expectations, though not many could have expected a late season run at the conference title.

I myself was relatively optimistic and expected around four wins, so even by those expectations the season was a success.

However, given how high the expectations got in the last few weeks, when talk of bowl berths and championships wasn't so far fetched, you can't blame fans for being dis-

appointed by the final outcome of the season.

## OFFENSIVE SPARK

Probably the biggest surprise of the season was the improved play from the offense, led by T.Y. Hilton, who has dominated our pages and opposing defenses with his school record 969 and counting receiving yards to go with a second nationwide total offense number with his stellar return play, not to mention his passing and rushing touchdowns.

Hilton's emergence has helped junior quarterback Paul McCall solidify his place as the quarterback for now and next season, passing for 2,040 yards and 14 TDs, with only nine interceptions, a significant improvement over last season's play from Wayne Younger and McCall.

Alongside Hilton, Greg Ellingson has emerged as a solid possession receiver, using his great size and hands to make acrobatic catches. He has especially turned it on over the last two games, grabbing 12 passes for 219 yards over that time. Junior Mertile has also shown flashes of potential playing the outside receiver position when.

Not all was positive for the offense, as the running game failed to find its footing all year, averaging just 94 yards per game. Departing seniors Julian Reams and A'Mod Ned continued to under perform, and they closed their careers

out with a paltry 761 yards combined between the two. Sophomore Daunte Owens and freshman Darriet Perry managed to make the most of their opportunities, averaging more yards per carry and showing more potential than Reams and Ned ever have.

The offensive line has been good at times, but their tendency to break down when faced with pressure situations might have cost the team two late comebacks against FAU and Louisiana Monroe.

**Offense grade: B+**  
**Offensive MVP: T.Y. Hilton**

## STEADY DEFENSE

At times, this defense carried the FIU team on their backs, and at other times the entire unit looked like they were wearing their helmets backwards.

The highest point was the opening home game against then No. 12 USF, who scored just 17 points. The defense caused a turnover and forced a couple of field goals on goal line stands, keeping them in the game with a spirited performance to christen the new stadium.

On the other hand the last quarter of the FAU game showed how vulnerable this defense could be at times. FAU's quarterback Rusty Smith tore the secondary up for 28 points in the fourth quarter.

The secondary was, however, the strength of the de-

fense for much of the season, with safeties Jeremiah Weatherspoon and Marshall McDuffie patrolling the tops and cornerbacks Robert Mitchell and Anthony Gaitor shutting down opposing passing games in the flats.

Gaitor got his hands on the ball more than any other player, picking four balls off and getting another 10 tipped passes, while Mitchell led the team in tackles and was all over the field.

The guys down front struggled to keep the opposing teams' running games in check most of the time, though they were pretty good at getting in the backfield and getting tackles for a loss. Quentin Newman quietly had a strong year at the defensive end position, picking up four sacks and 10 TFL, while Scotty Bryant, Michael Dominguez, and Ryan Martinez were all around the leaders of the team in tackles.

**Defense grade: B**  
**Defensive MVP: Mitchell and Gaitor**

## TEAM'S SPECIALTY

While much has been made of T.Y.'s abilities returning the ball, picking up two touchdowns and averaging 15 yards per punt return and 25 per kickoff return, a quiet strong point even without his contributions. Punter Carlos Munera led the conference in net punt average and punts within the 20 yard line.



RICK MARTINEZ/THE BEACON

**BRIGHT FUTURE:** Next year's team looks promising with the Golden Panthers returning many contributors on offense like T.Y. Hilton (4).

On the other end O'Darris D'Haiti and Alonzo Phillips were able to block a couple of punts each, and Phillips picked up 14 tackles on special teams and a blocked punt return for a touchdown. Dustin Rivest improved his field goal and, but was still just 10-15 on field goals.

**Special Teams grade: A-**  
**Special Teams MVP: Munera and Phillips**

## NEXT YEAR

For the first time ever, the future is bright for this team, with many returning contributors on all sides of the ball. The offense is led by mostly underclassmen, and should be one of the top in the conference next season.

The defense has depth, and returns many of their playmakers in the secondary and linebacking corps, though the defensive line will take some hits.

There is no reason why this team shouldn't be able to be one of the top three teams in the Sun Belt next season, and looking at their schedule, with the exception of Florida and Alabama, every game on their schedule is winnable.

You have to grade this team high based on exceeding expectations at the beginning, but they are knocked down by failing to close out against ULM and FAU, which could've led them to a bowl game.

**2008 team grade: B**  
**2008 team MVP: Hilton**



LIVE  
**GAME  
UPDATES**  
at  
**fiusm.com**

LISTEN LIVE

December 5th  
5 p.m.



## A CAREER DAY



**DEFENSIVE JUGGERNAUT:** Forward Cedric Essola scored 17 points in the Golden Panthers 67-41 win over Florida Memorial, which was the least amount points ever allowed at U.S. Century Bank Arena.

VICTORIA LYNCH/  
THE BEACON

## CLASSIFIEDS

### ROOM FOR RENT

Room for rent: Furnished, spacious room with cable TV., microwave, refrigerator, internet. One person \$600.00, two person's \$850.00. 10 minutes from FIU, Coral Way Street, parking available. Please call (305) 227-0235 or (786) 351-8958

### JOBS

Blood donors needed! Plasma Services Group is in need of individuals recently diagnosed with Herpes, Rubella, Mumps, Chlamydia, Syphilis, Mono/EBV to donate a unit of blood / plasma for research purposes. We will pay between \$250.00 - \$500.00 for a plasma / blood donation. For more info e-mail [sfleishman@plasmaseservicesgroup.com](mailto:sfleishman@plasmaseservicesgroup.com)



VICTORIA LYNCH/THE BEACON

## FINAL CURTAIN CALL

### Golden Panthers look to rebound against Hilltoppers

**ANDREW JULIAN**  
Sports Director

Coming off a 57-50 overtime loss to FAU, in the Shula Bowl, the Golden Panthers (4-7, 3-4 SBC) look to send their senior class out with a victory against Western Kentucky (2-9), in the final game of the season at FIU Stadium.

The FIU offense has been its best at the end of the season, putting forth its best offensive outputs in recent weeks. FIU has out gained five of its last eight opponents, and is 4-4 in those games, and picked up 513 yards against FAU. The Golden Panthers are averaging 352.8 yards per game in those games, and will look to continue their strong offensive output against a Hilltopper squad that ranks 71st in the FBS in total defense, at 369.8 yards per game.

For FIU, the offensive process begins with their offensive line, which has allowed just three sacks over the past two games, and has paved the way for back-to-back 100-yard rushers for the first time in four years. FIU's offensive line is a healthy as it has been all year, and has developed a continuity that has allowed them to be playing well at the end of the year. The young offensive line features just one senior, Dustin Gibson, and in addition to peaking at the end of this season, should have a full cupboard as FIU looks toward the off season.

Paul McCall has been one of the beneficiaries of the steady offensive line play, throwing for a school record 400-yards against the Owls, and putting together a productive season, after being embroiled in a quarterback battle in training camp. McCall has completed 52 percent of his passes for 2,040 yards and 14 touchdowns, with just nine interceptions. McCall will attempt to become the starting first FIU quarterback to throw fewer than 10 interceptions in a season, and the junior from Hollywood Hills will have a good chance to post the first season bay a signal caller with more touchdowns thrown than interceptions in three seasons.

After posting 116 yards and two scores on the heels of a 127 yard one TD performance by Julian Reams, freshman running back Darriet Perry should be a factor once again this week. Perry, who was thrust into duty because of injuries, should have another opportunity to show what he can do again, as he, and the senior Reams, will be the main tailbacks getting carries in the contest.

Greg Ellingson and T.Y. Hilton have evolved into one of the best one-two receiver combinations in the Sun Belt. Hilton has collected 49 passes for 969 yards and seven touchdowns, while Ellingson has added 29 receptions for 470 yards and three scores. Hilton has posted the greatest receiving

season in FIU history, already having set the record for yards and touchdowns, and remains within striking distance of FIU's first 1,000-yard season.

Defensively, FIU will have some holes to plug against WKU, having allowed 524 yards to FAU last week. The Golden Panthers should have an easier time, not facing a top-tier offensive attack, in Western Kentucky, that averages 295.7 yards per game, 110th in the FBS.

David Wolke will try to figure out the FIU defense for the Hilltoppers. He's posted an even eight TD's and eight picks this season, and had thrown for 1,140 yards. The Hilltoppers have allowed 23 sacks this season, playing nearly a full Sun Belt schedule, and that number is fewer than the 25 FIU has allowed.

On the ground, WKU likes to spread the carries around, with five rushers with 200 or more yards, and only one averages less than four yards per carry. A unique feature of the Hilltopper offense is that they average over 150 yards per game on the ground, despite their leading rusher, Tyrell Haden, averaging just 33.9 yards per game. Jake Gabler is the leading receiver with 540 yards on 49 catches and four of the eight WKU touchdown catches.

Senior defensive back Robert Mitchell leads the Golden Panthers in tackles with 82, and is second in both tackles for loss

(7.5) and sacks (3.0). He and Anthony Gaitor may contend for post-season all-conference honors. Gaitor leads the SBC in passes defensed with 14 and has four interceptions.

If the FIU front seven can stop the WKU rushing attack, FIU should have good success. Against FAU, the Golden Panthers allowed 135 yards, and balance between multiple backs kept FIU's front seven out of its comfort zone. Push in the middle will come from Jonas Murrell and Jonathan Nieves, and the linebackers have had solid years making tackles for loss when given space to work.

#### BEACON PREDICTION

The Golden Panthers, after back-to-back heartbreaking losses will come out fired up for senior day, and the focus will be in tune from the first snap. FIU has had some blowout wins this year, but none have been complete games where they marched right through an opponent; this week will be different. FIU's lines, for the first time this season, will dominate the game, and give the 19 FIU seniors something to remember for their last home game. T.Y. Hilton will eclipse the 1,000 yard mark, and Paul McCall will post the best TD-to-INT in the history of the young FIU football program, and the Golden Panthers will roll.

**FIU 42, WKU 10**