

West Africa Water Supply, Sanitation and Hygiene Program (USAID WA-WASH)

PROFILE OF CENTR-OUEST REGION IN BURKINA: DEMOGRAPHICS, AGRICULTURE, ACCESS TO WATER AND SANITATION

Geographical situation

See Map in the top right box

Area: 21 891km²

Languages: Mooré, Gourounsi, Foulfouldé and French as official language

Schooling rate: 90.4%

Agricultural Statistics: (year) 2011*

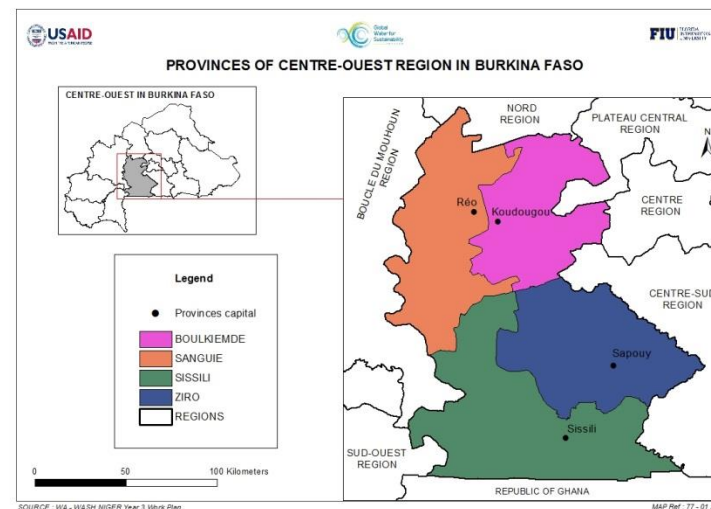
Cultivated area: 488143ha

Production (tons):

- Millet: 66555
- Corn: 103173
- Rice: 6234
- Sorghum: 11934
- Cotton: 16616
- Sesame: 3061
- Groundnut: 38141
- Beans: 39054
- Vouandzou: 3322

Livestock (head):

- Cattle: 626 814
- Sheep: 863 889
- Goat: 1 410 680
- Hogs: 405 869
- Donkey: 135 235
- Poultry: 5 877 976



Demographic facts of the region

Province	Number of Communes	Number of Villages	Number of households	Population	Density hbts/km ²
Boulkiemdé	16	166	71 630	505 206	118.34
Sanguié	09	134	42 379	297 036	57.36
Sissili	07	147	33 080	208 409	29.20
Ziro	06	126	26 370	175 915	34.23

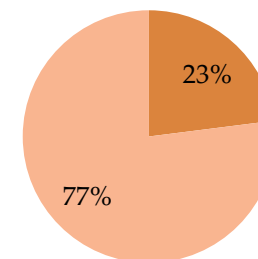
Source: Institut Nationale des Statistiques et de la Démographie (2006 census)

*source: Ministère de l'Agriculture de l'Hydraulique et des ressources Halieutiques (MAH)

- Number of functioning Boreholes (2010)¹: 3060
- Total number of inhabitant (projected for 2010 from 2006 census)²: 1 310 644
- Number of inhabitants per borehole:
- The ratio of inhabitant per borehole is higher than the standard set by the World Health Organization (300 persons /borehole).

1-Annuaire statistique 2010 de l'eau potable et de l'assainissement des eaux usées et excréta (DGRE 2012)
 2-Monographie régionale Centre-Ouest (MAH 2011)

Access to Sanitation



■ open Space Defecation ■ Using a type of Sanitation