

HYDROGEOLOGIC RECONNAISSANCE

OF LEE COUNTY, FLORIDA PART 2 : ATLAS

PREPARED BY :
GROUND WATER DIVISION

SOUTH FLORIDA WATER MANAGEMENT DISTRICT

TECHNICAL PUBLICATION 82-1

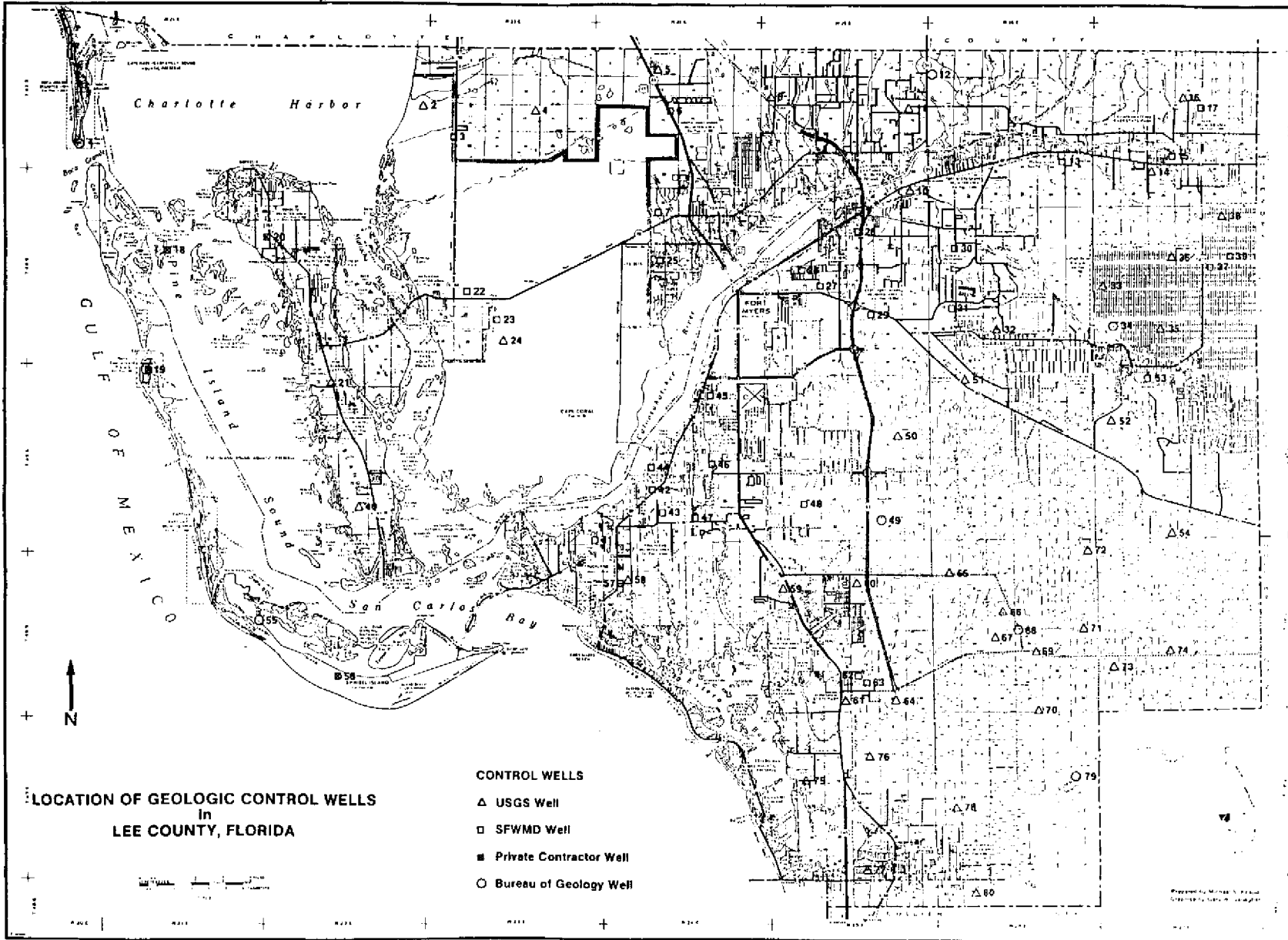
January, 1982

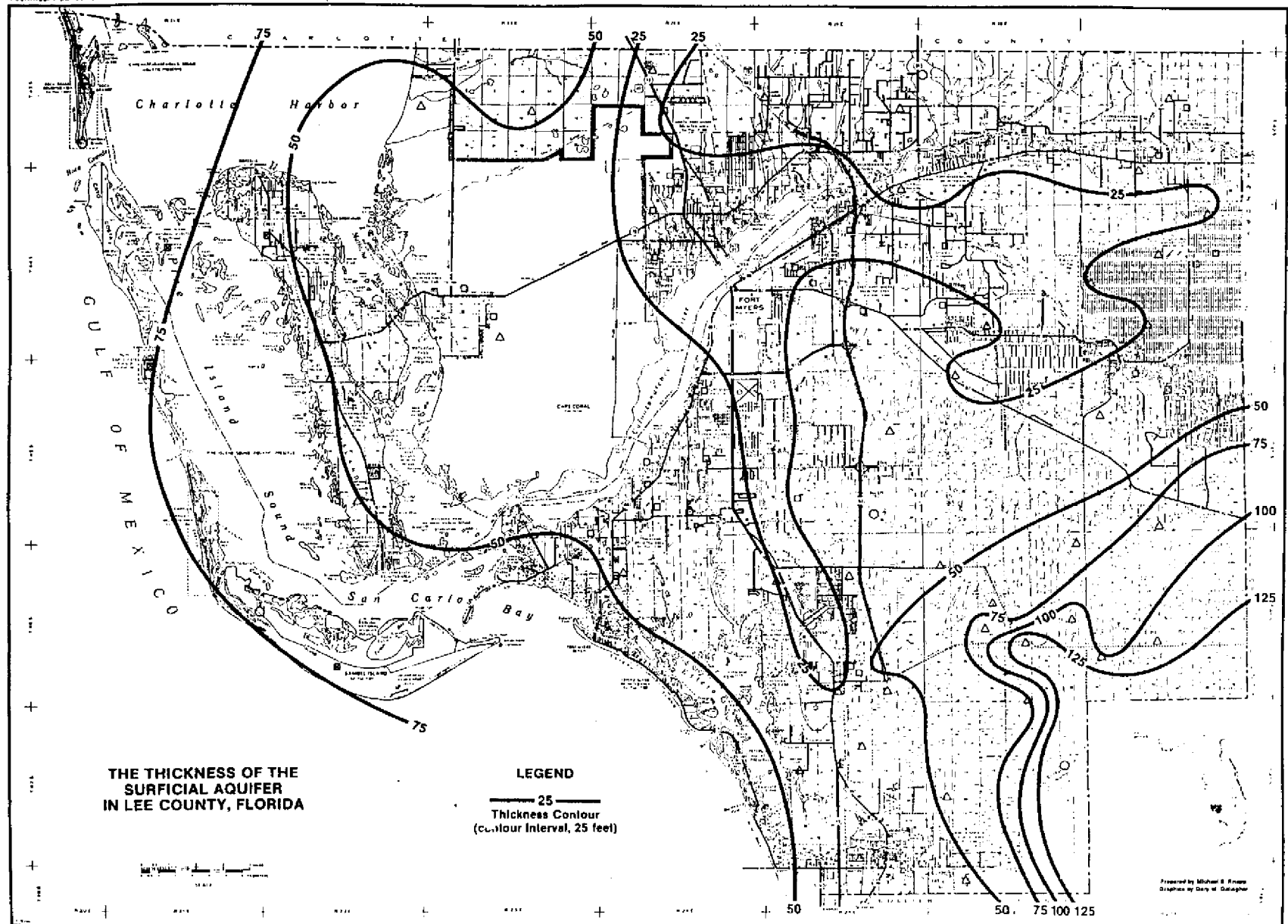
This Atlas is designed to be used in conjunction with Part 1 (Text) and Part 3 (Appendices) of this Report.

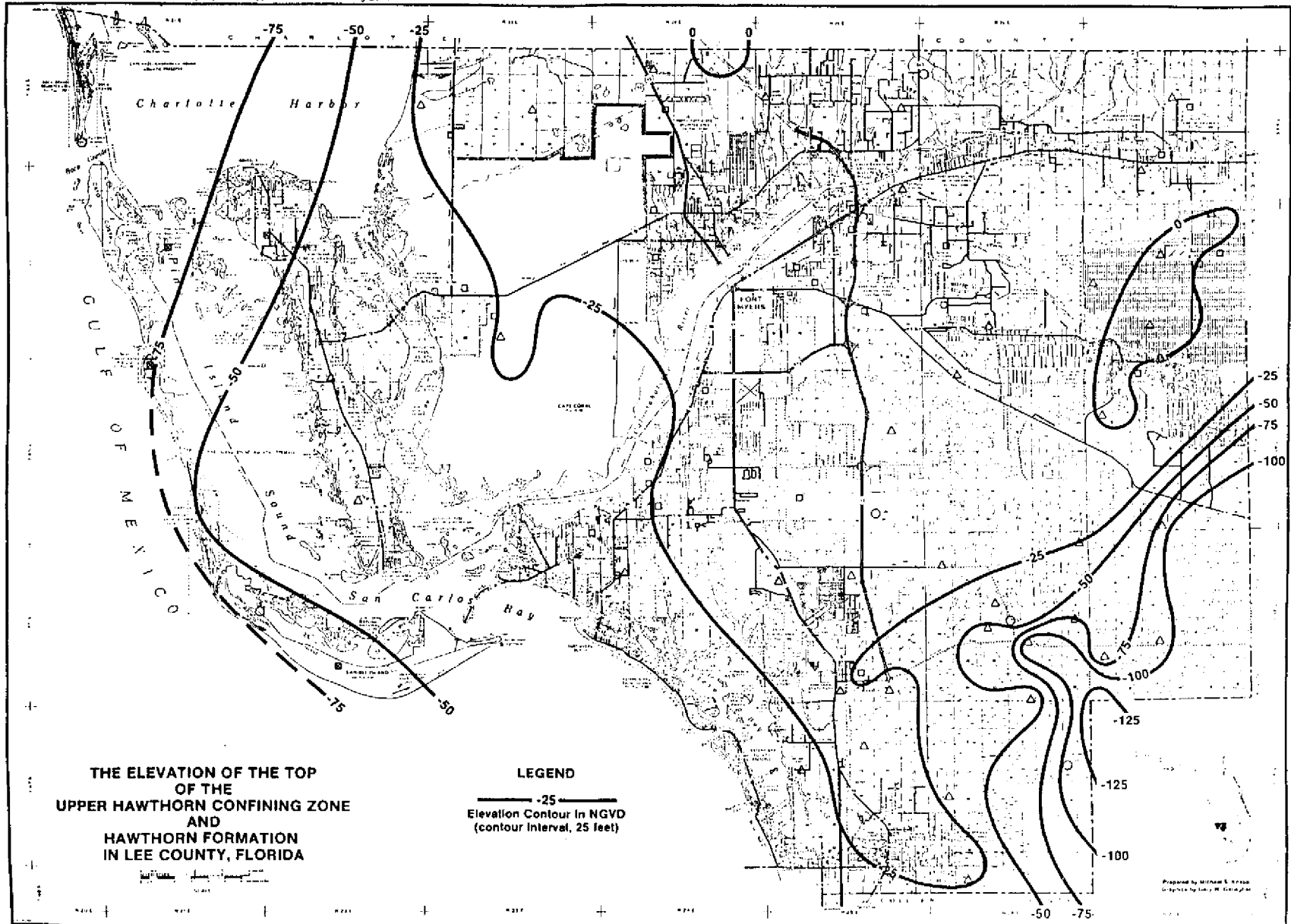
DRE - 151

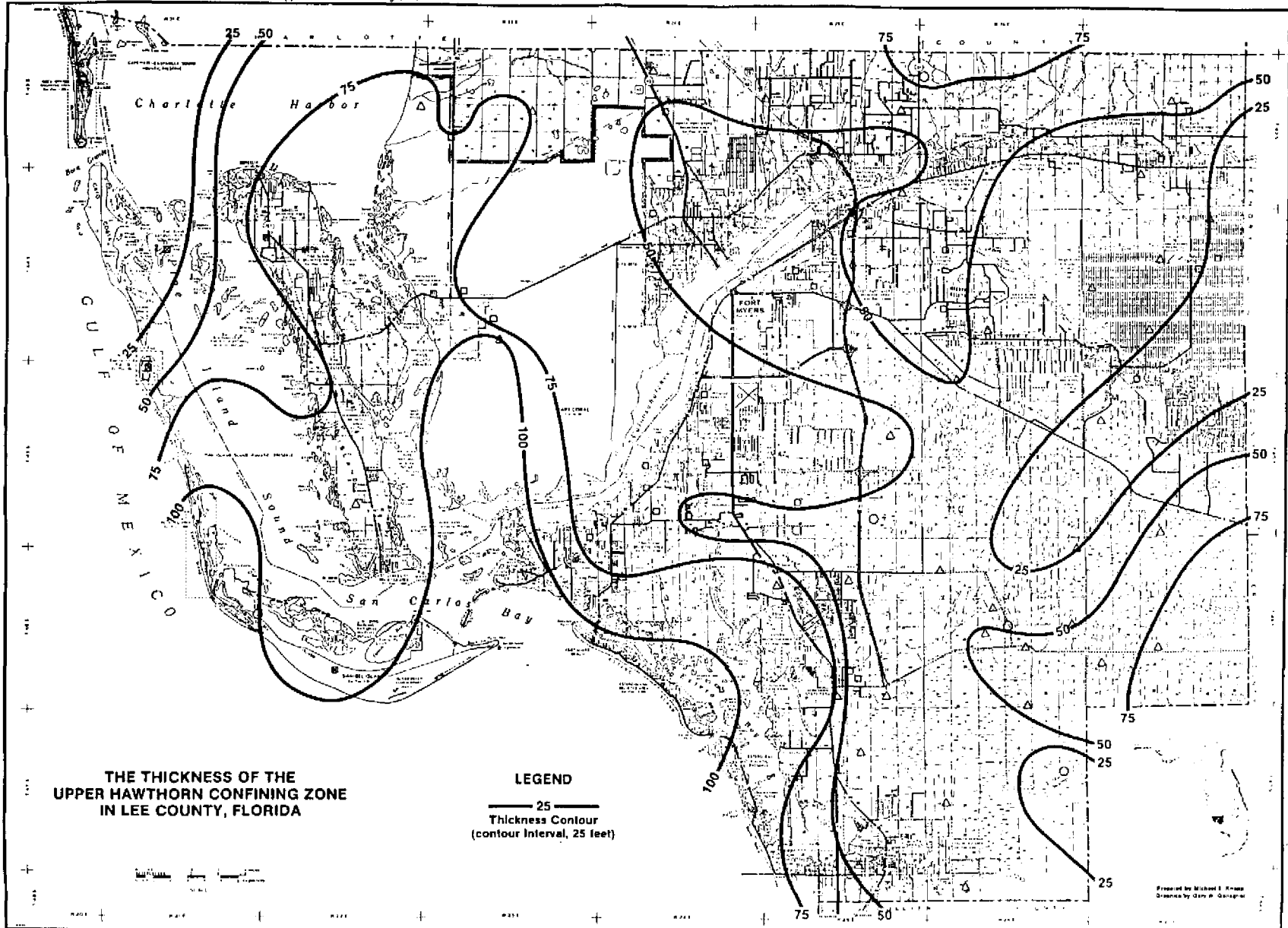
TABLE OF CONTENTS

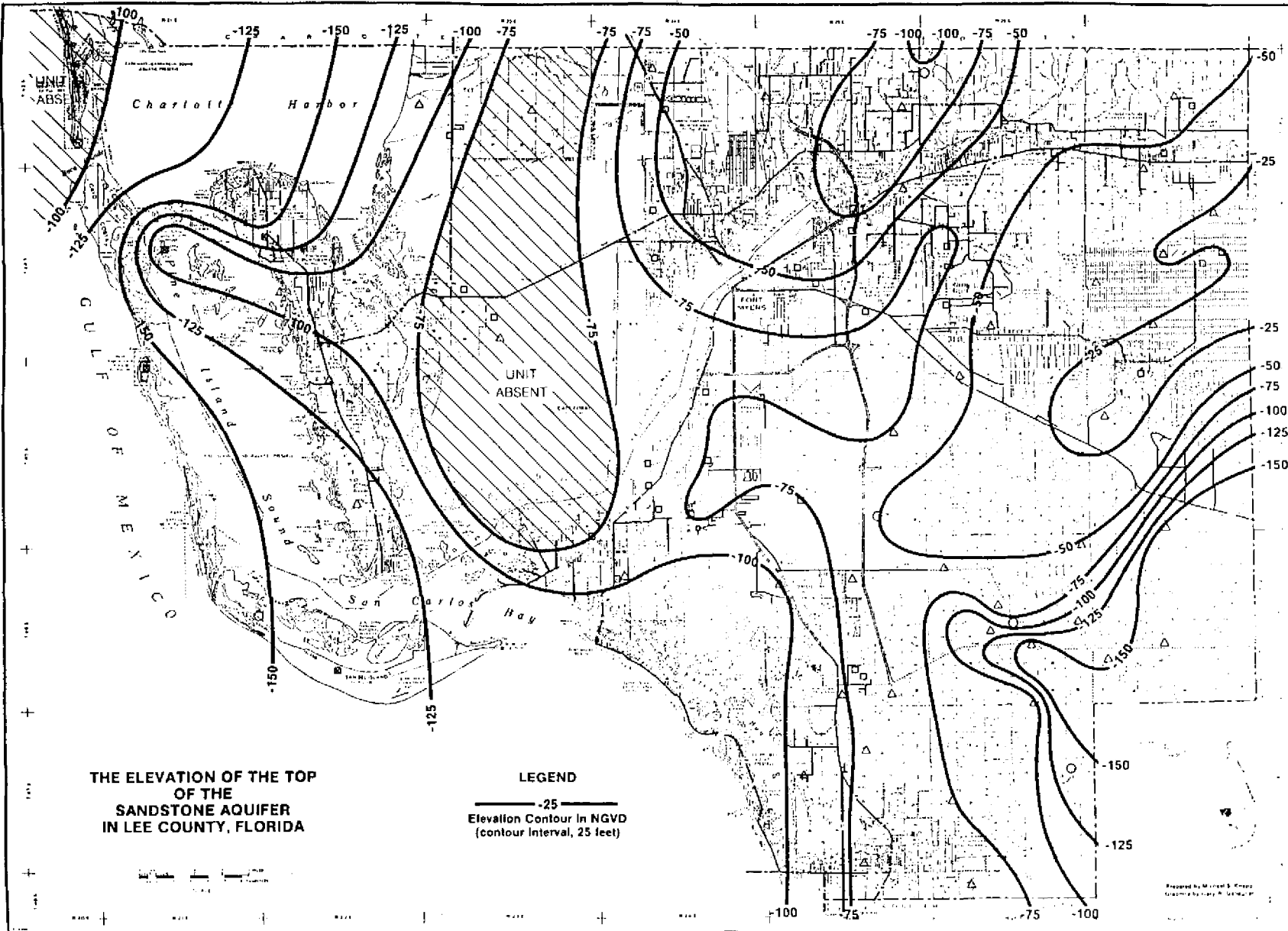
- PLATE NO. 1 - LOCATION OF GEOLOGIC CONTROL WELLS IN LEE COUNTY, FLORIDA
- PLATE NO. 2 - THE THICKNESS OF THE SURFICIAL AQUIFER IN LEE COUNTY, FLORIDA
- PLATE NO. 3 - THE ELEVATION OF THE TOP OF THE UPPER HAWTHORN CONFINING ZONE AND HAWTHORN FORMATION IN LEE COUNTY, FLORIDA
- PLATE NO. 4 - THE THICKNESS OF THE UPPER HAWTHORN CONFINING ZONE IN LEE COUNTY, FLORIDA
- PLATE NO. 5 - THE ELEVATION OF THE TOP OF THE SANDSTONE AQUIFER IN LEE COUNTY, FLORIDA
- PLATE NO. 6 - THE THICKNESS OF THE SANDSTONE AQUIFER IN LEE COUNTY, FLORIDA
- PLATE NO. 7 - THE ELEVATION OF THE TOP OF THE MID-HAWTHORN CONFINING ZONE IN LEE COUNTY, FLORIDA
- PLATE NO. 8 - THE ELEVATION OF THE TOP OF THE MID-HAWTHORN AQUIFER IN LEE COUNTY, FLORIDA
- PLATE NO. 9 - THE ELEVATION OF THE TOP OF THE LOWER HAWTHORN/TAMPA PRODUCING ZONE IN LEE COUNTY, FLORIDA
- PLATE NO. 10 - THE THICKNESS OF THE HAWTHORN FORMATION IN LEE COUNTY, FLORIDA
- PLATE NO. 11 - THE THICKNESS OF THE LOWER CARBONATE MEMBER OF THE HAWTHORN FORMATION IN LEE COUNTY, FLORIDA
- PLATE NO. 12 - THE ELEVATION OF THE TOP OF THE SUWANNEE LIMESTONE IN LEE COUNTY, FLORIDA
- PLATE NO. 13 - THE LOCATION OF THE HYDROGEOLOGIC CROSS SECTIONS IN LEE COUNTY, FLORIDA
- PLATE NO. 14 - HYDROGEOLOGIC CROSS SECTION A-A'
- PLATE NO. 15 - HYDROGEOLOGIC CROSS SECTION B-B'
- PLATE NO. 16 - HYDROGEOLOGIC CROSS SECTION D-D'
- PLATE NO. 17 - HYDROGEOLOGIC CROSS SECTION E-E'
- PLATE NO. 18 - HYDROGEOLOGIC CROSS SECTION F-F'
- PLATE NO. 19 - HYDROGEOLOGIC CROSS SECTION C-C' AND G-G'
- PLATE NO. 20 - HYDROGEOLOGIC CROSS SECTION H-H' AND I-I'
- PLATE NO. 21 - WATER LEVEL IN THE SURFICIAL AQUIFER (MARCH-1979) IN LEE COUNTY, FLORIDA
- PLATE NO. 22 - WATER LEVEL IN THE SURFICIAL AQUIFER (SEPTEMBER-1979) IN LEE COUNTY, FLORIDA
- PLATE NO. 23 - POTENTIOMETRIC SURFACE OF THE SANDSTONE AQUIFER (MARCH-1979) IN LEE COUNTY, FLORIDA
- PLATE NO. 24 - POTENTIOMETRIC SURFACE OF THE SANDSTONE AQUIFER (SEPTEMBER-1979) IN LEE COUNTY, FLORIDA
- PLATE NO. 25 - POTENTIOMETRIC SURFACE OF THE MID-HAWTHORN AQUIFER (MARCH-1979) IN LEE COUNTY, FLORIDA
- PLATE NO. 26 - POTENTIOMETRIC SURFACE OF THE MID-HAWTHORN AQUIFER (SEPTEMBER-1979) IN LEE COUNTY, FLORIDA
- PLATE NO. 27 - POTENTIOMETRIC SURFACE OF THE LOWER HAWTHORN AQUIFER (MARCH-1979) IN LEE COUNTY, FLORIDA
- PLATE NO. 28 - POTENTIOMETRIC SURFACE OF THE LOWER HAWTHORN AQUIFER (SEPTEMBER-1979) IN LEE COUNTY, FLORIDA

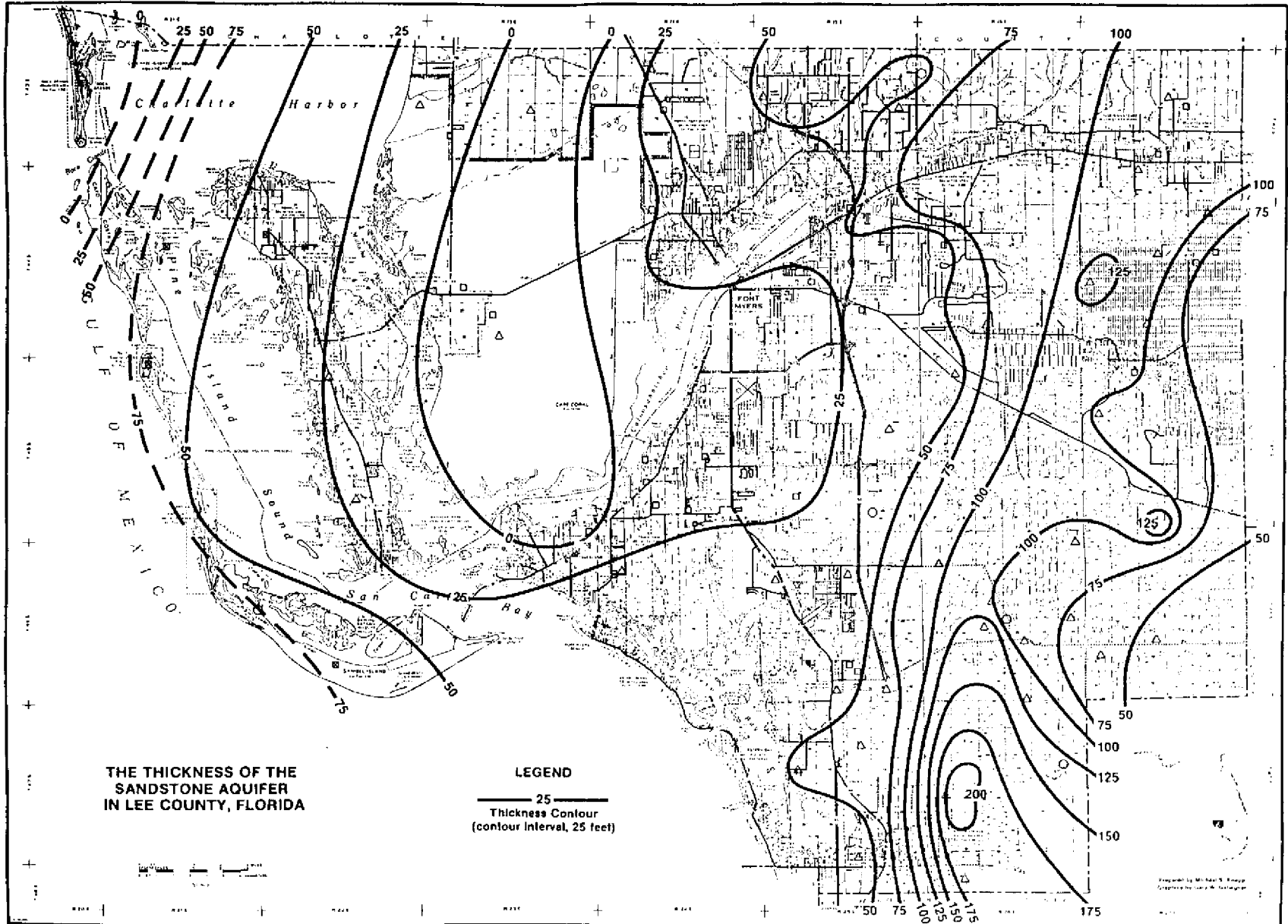










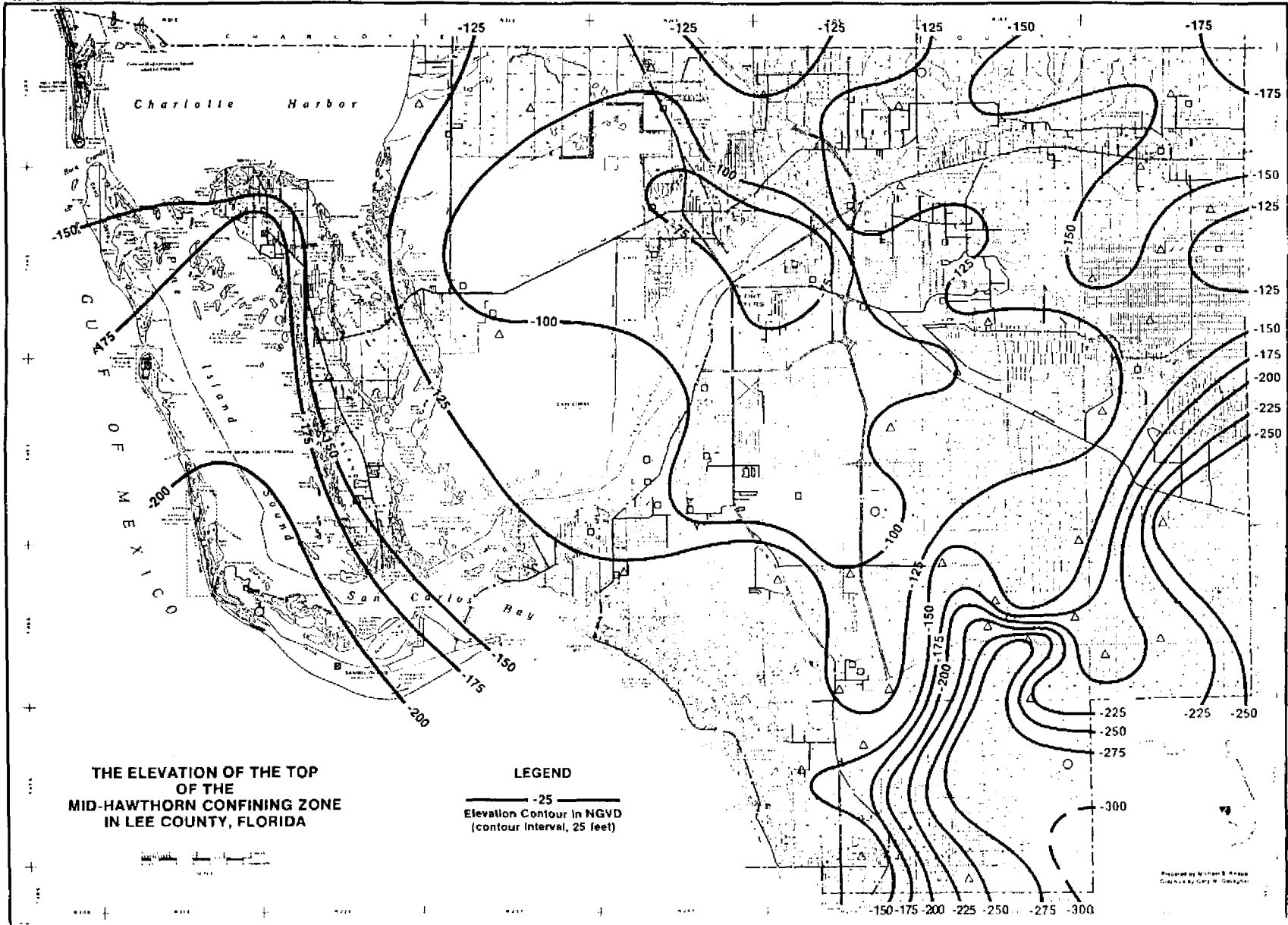


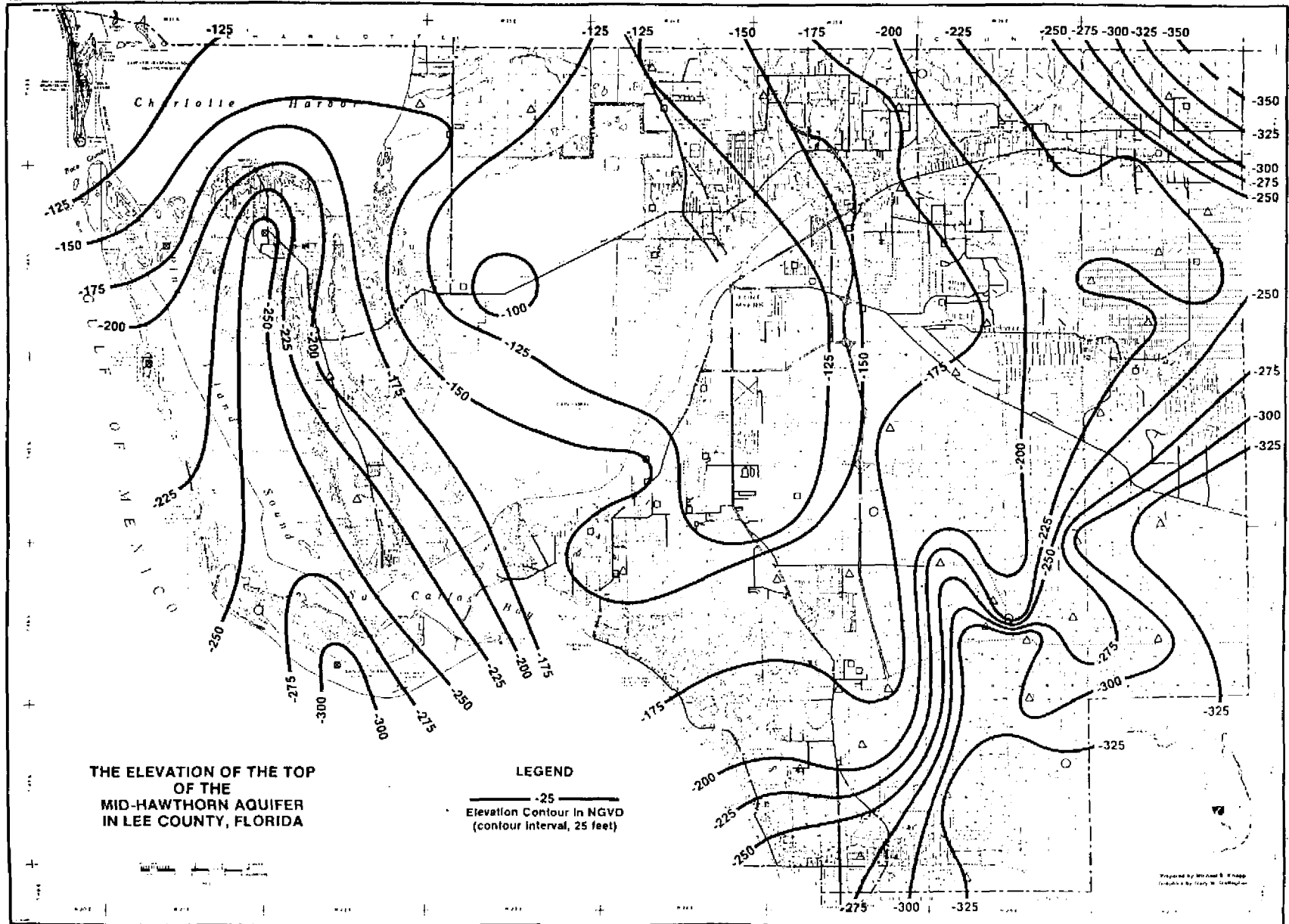
**THE THICKNESS OF THE
SANDSTONE AQUIFER
IN LEE COUNTY, FLORIDA**

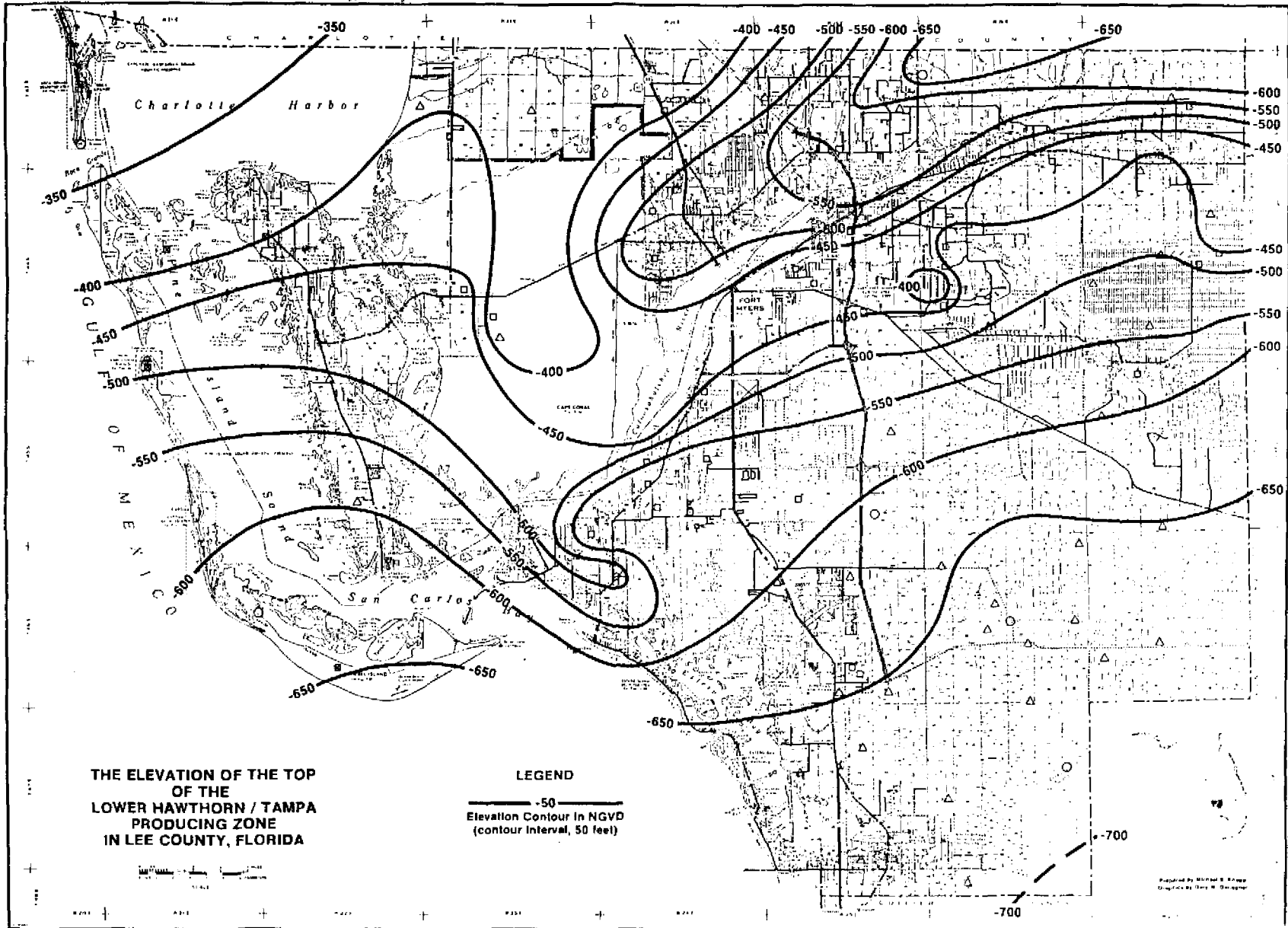
LEGEND
—— 25 ——
Thickness Contour
(contour interval, 25 feet)

Scale bar showing 0, 1, 2, 3, 4, 5 miles.

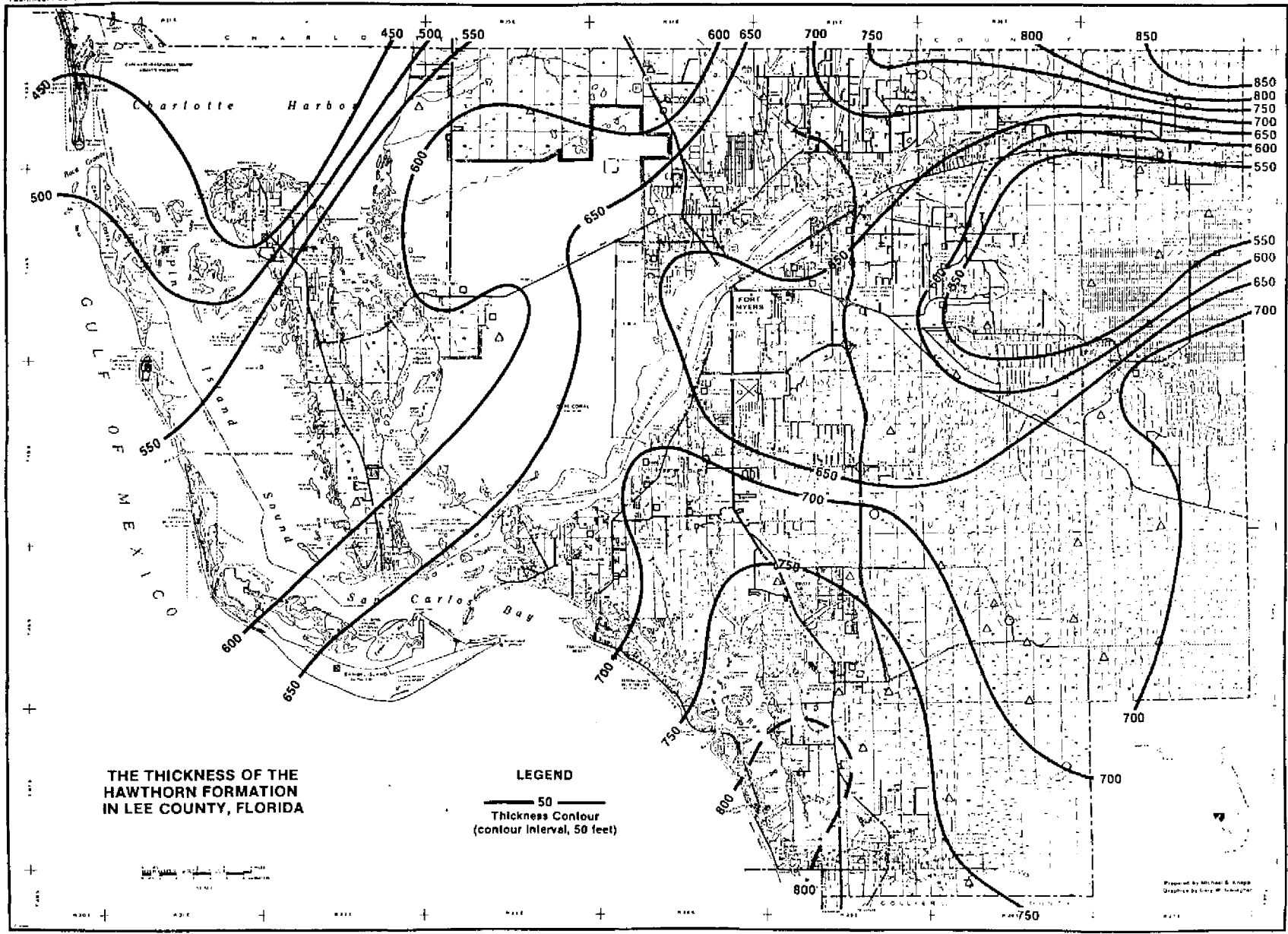
Prepared by M. H. S. Brown
Copyright by the U.S. Geological Survey

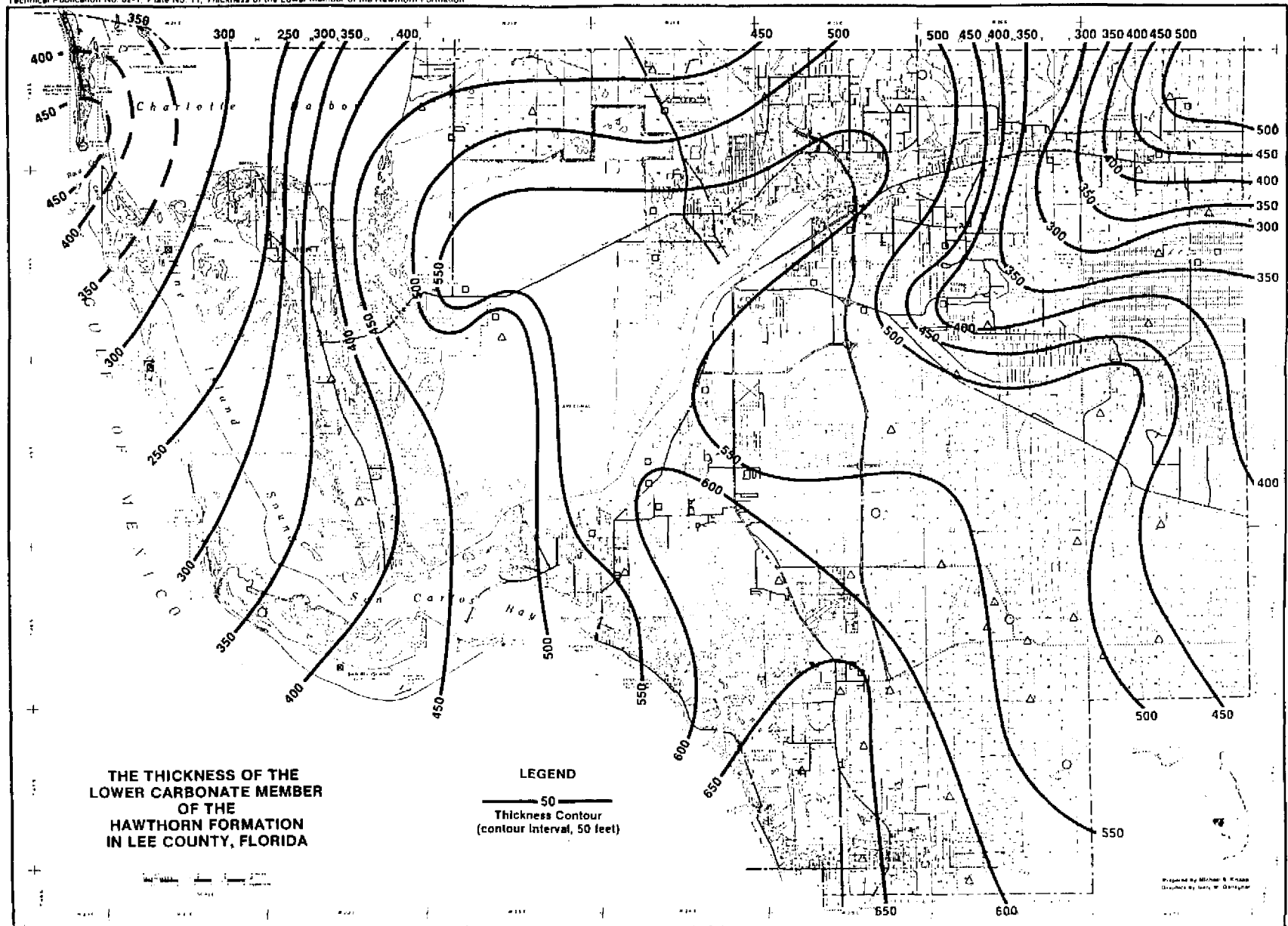


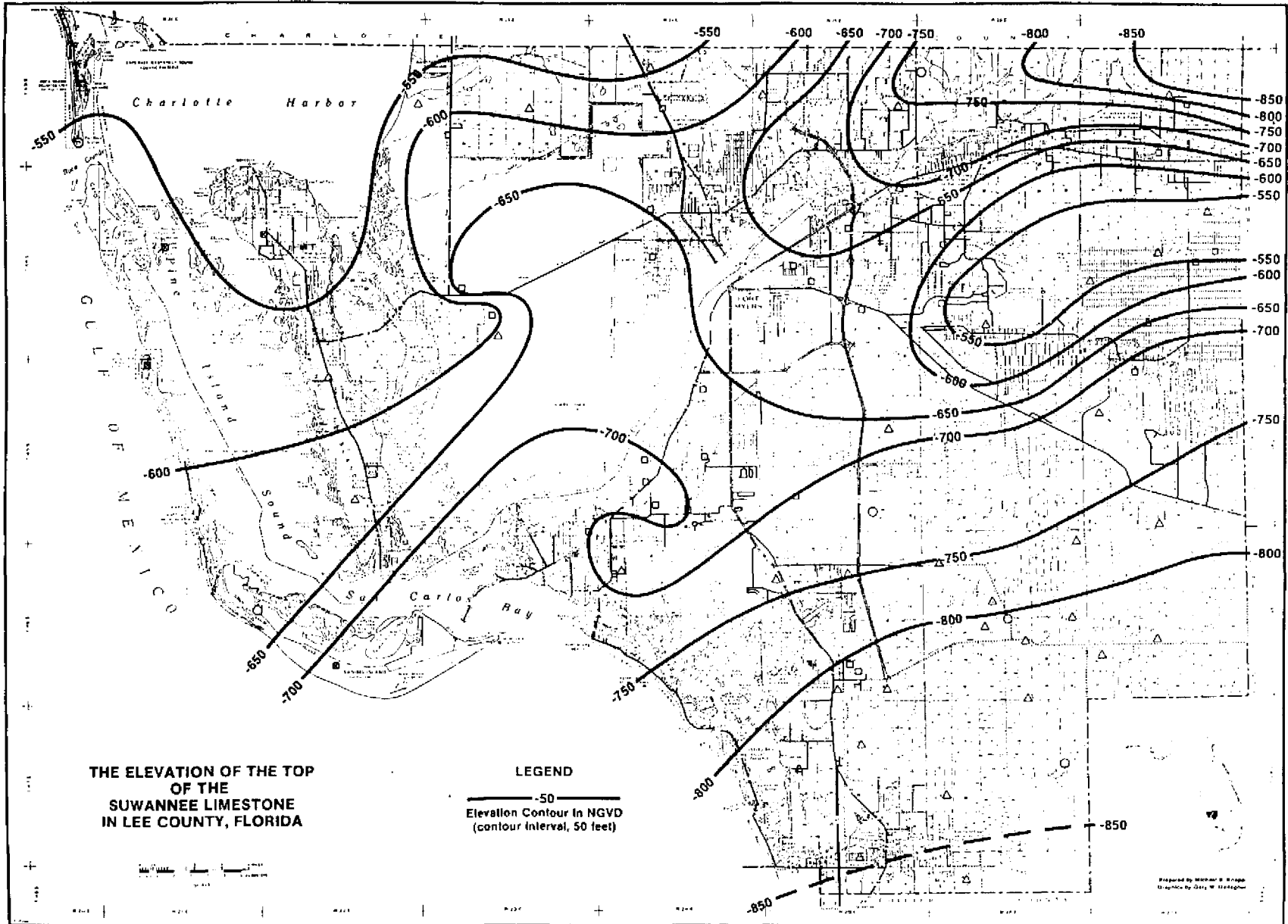




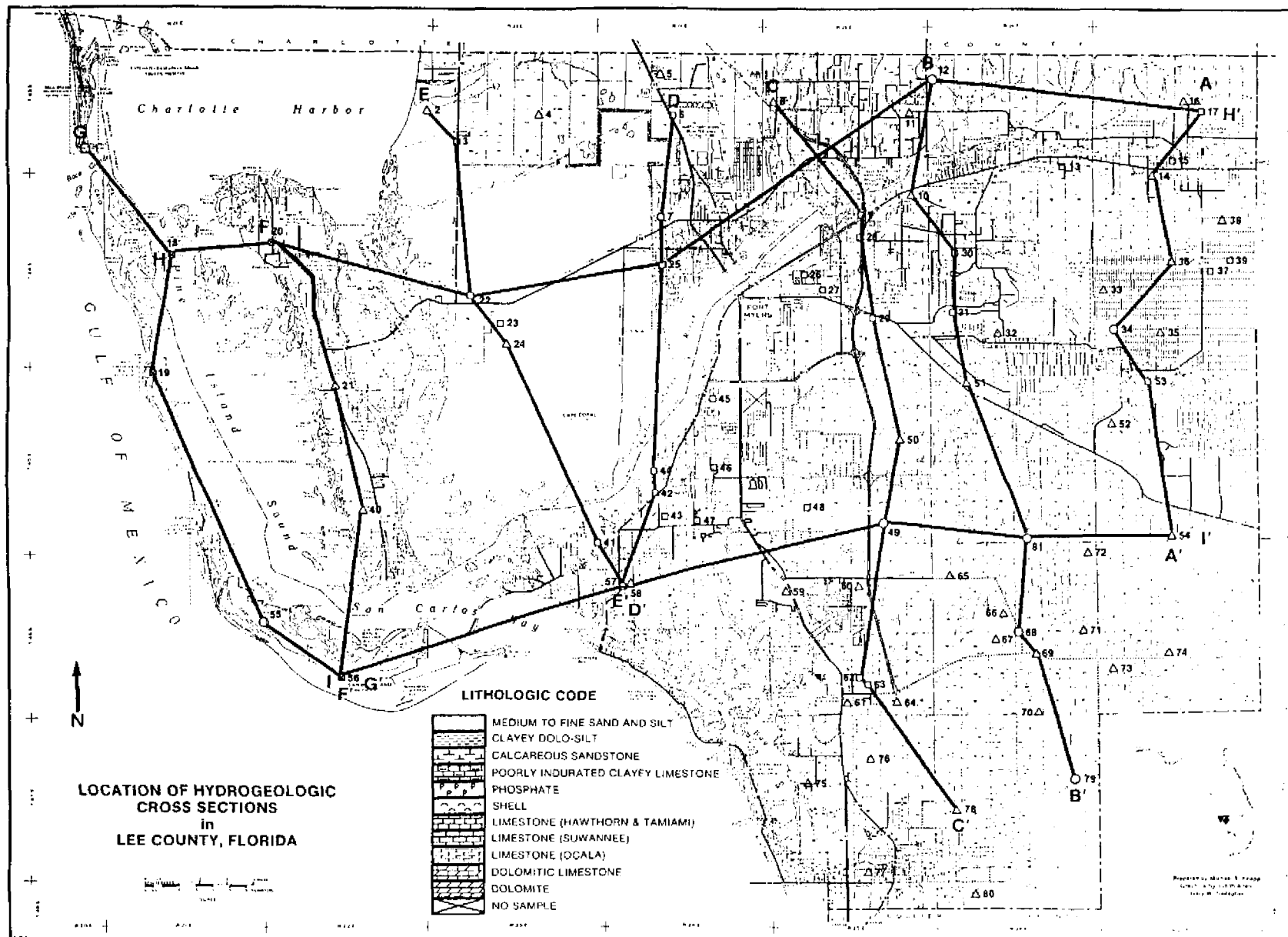
Reproduced by Michael S. Stapp
Digitized by Gary M. Sawyer

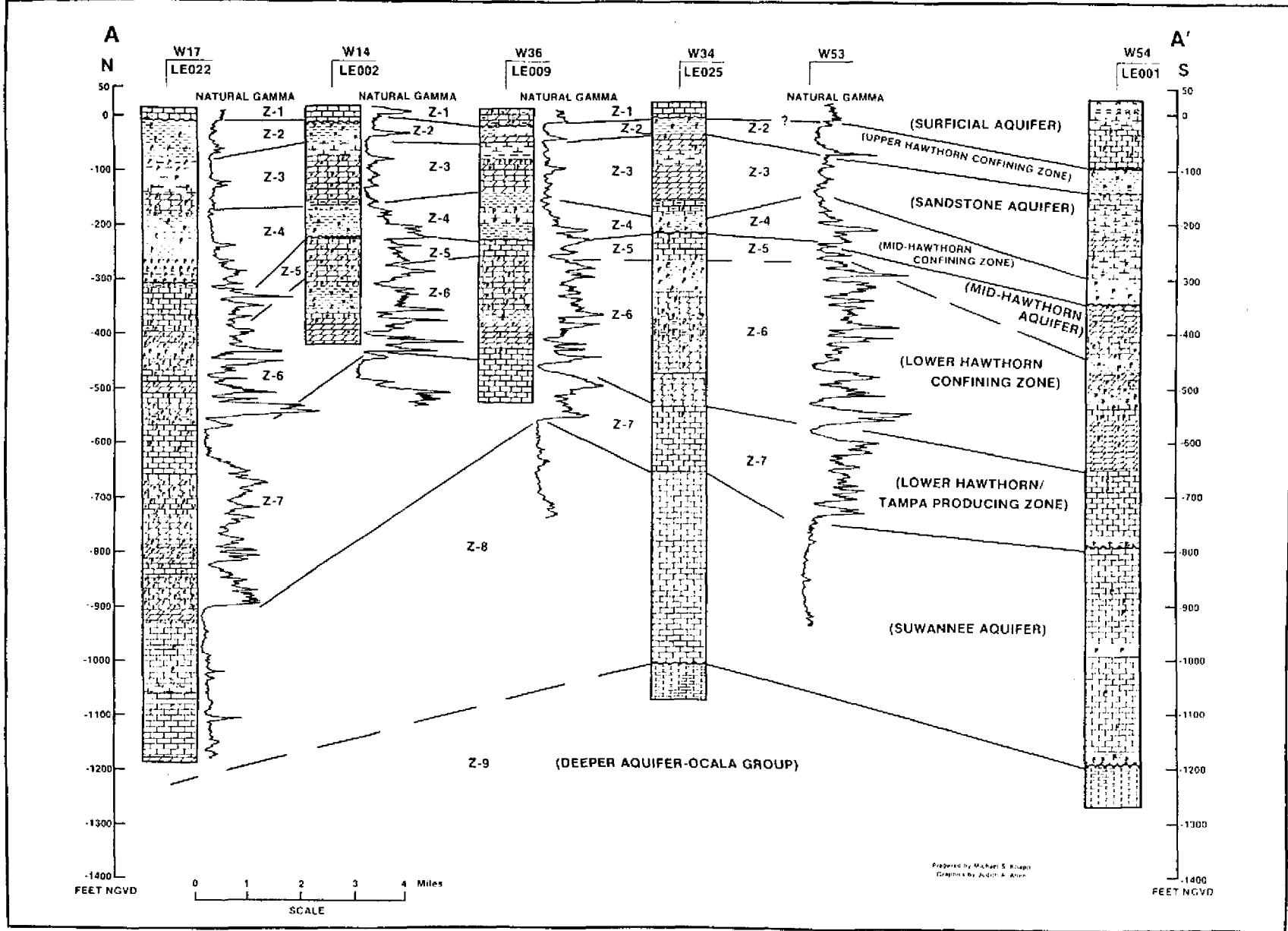


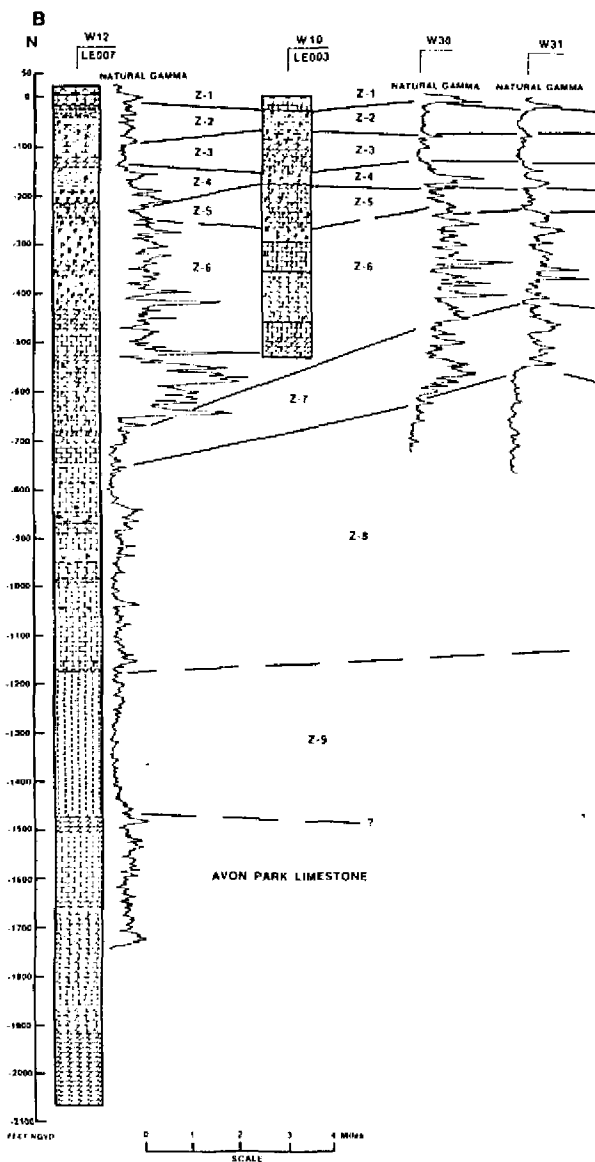


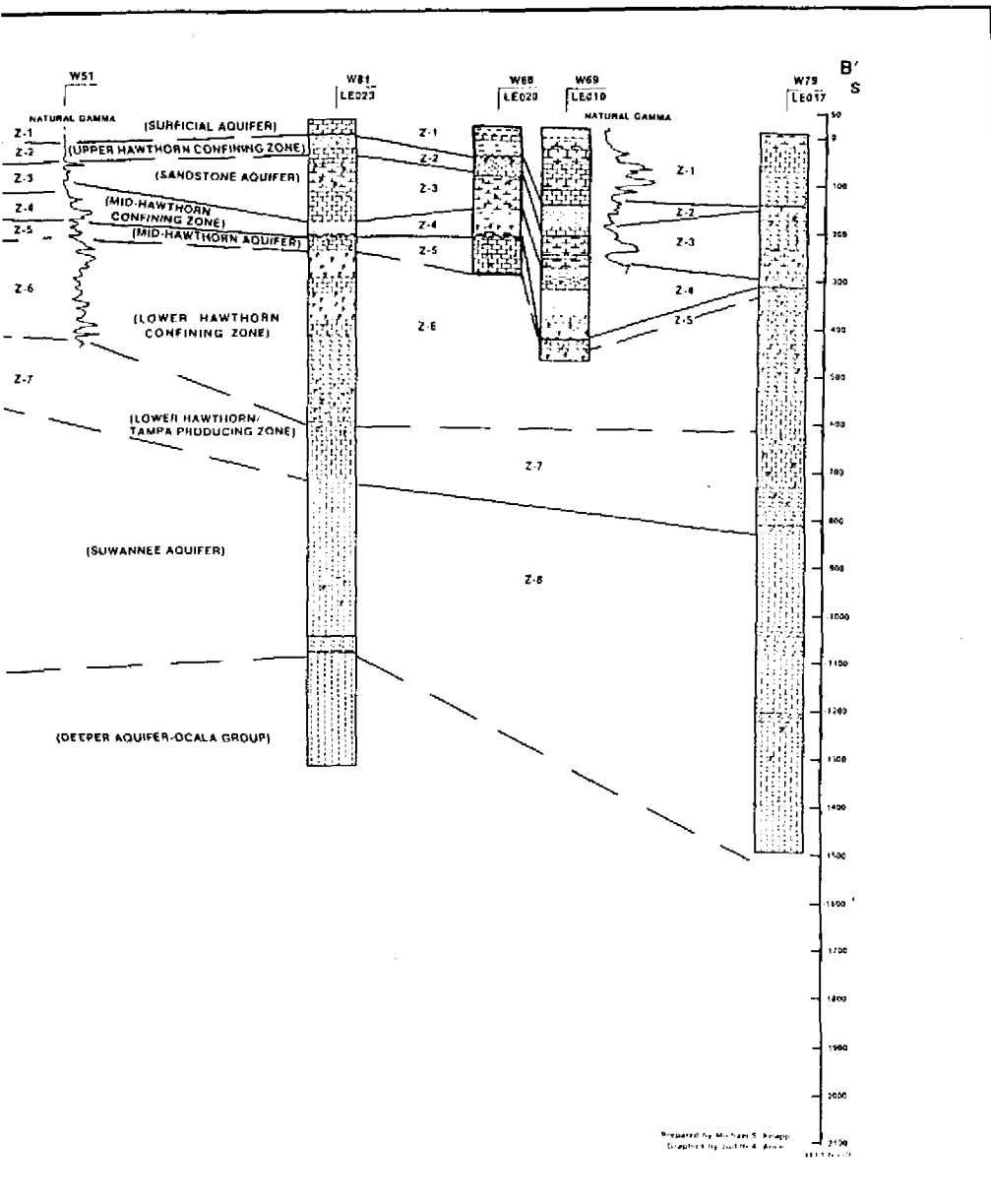


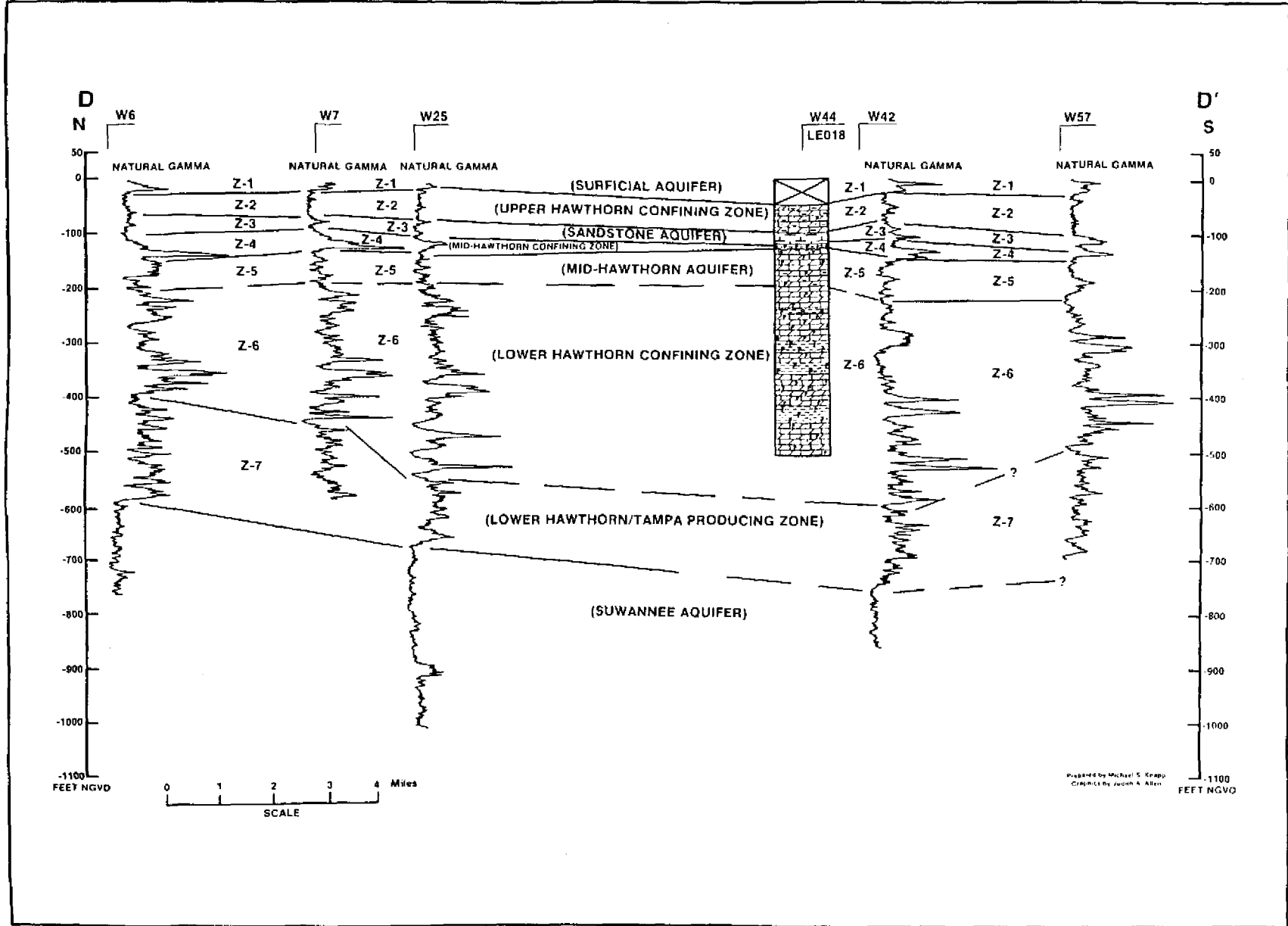
Prepared by William B. Krapp
Graphics by Gary W. Hestegren

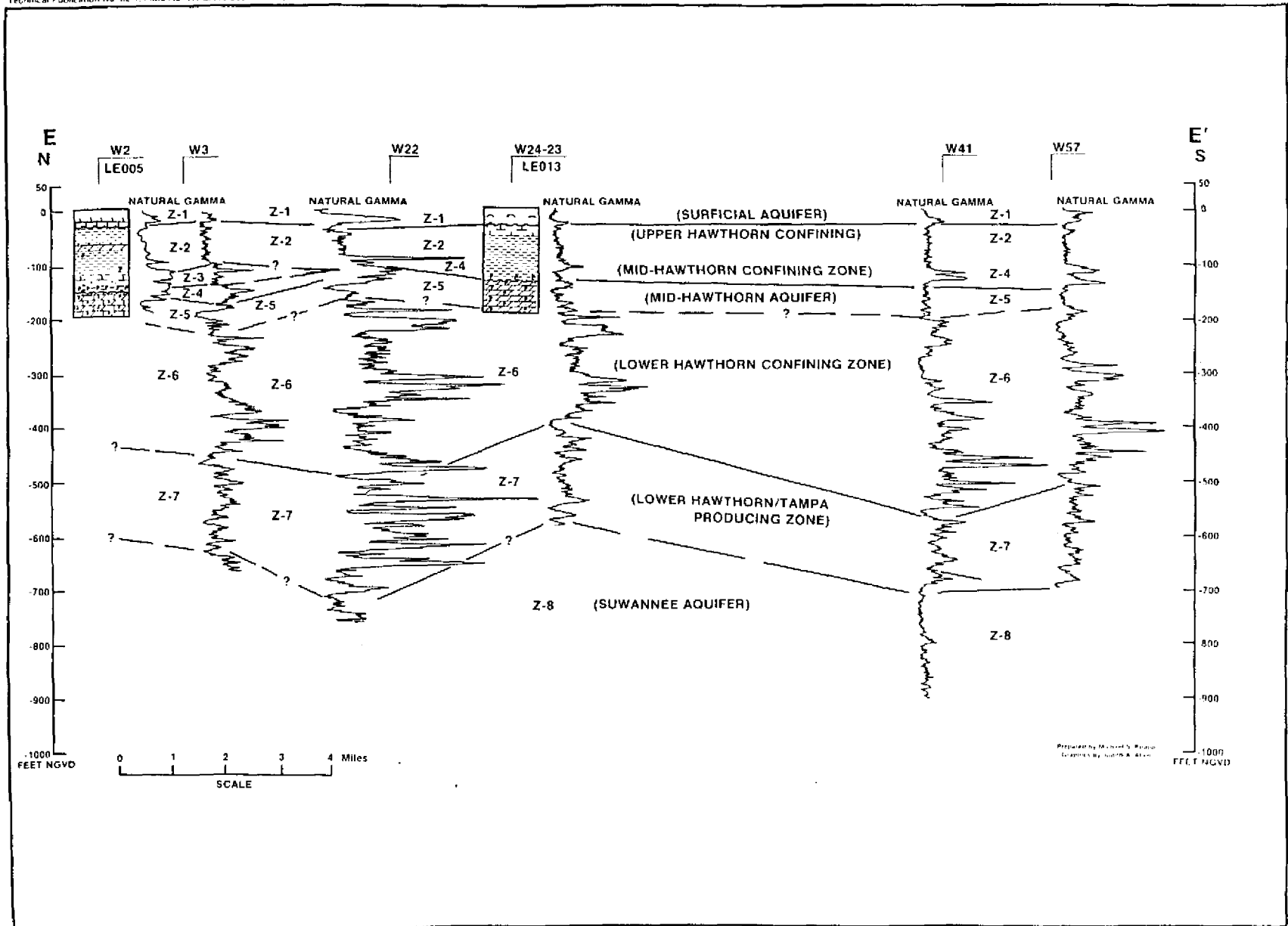


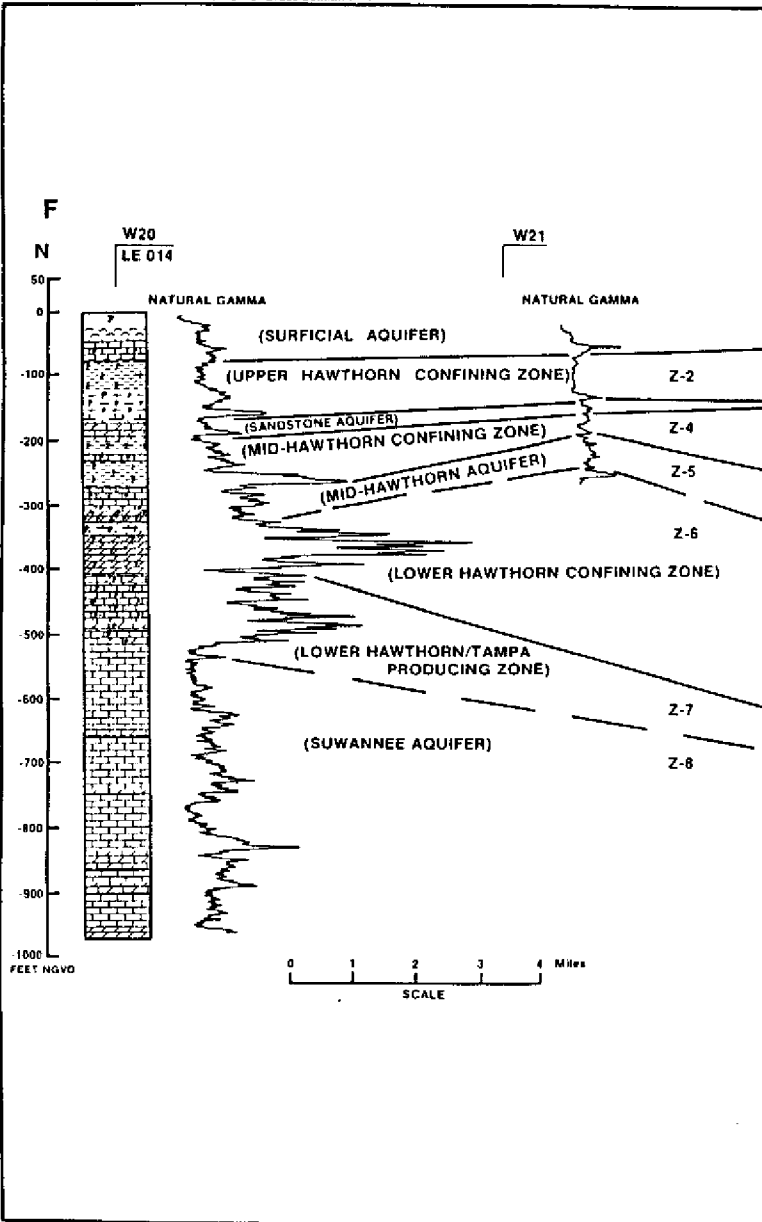


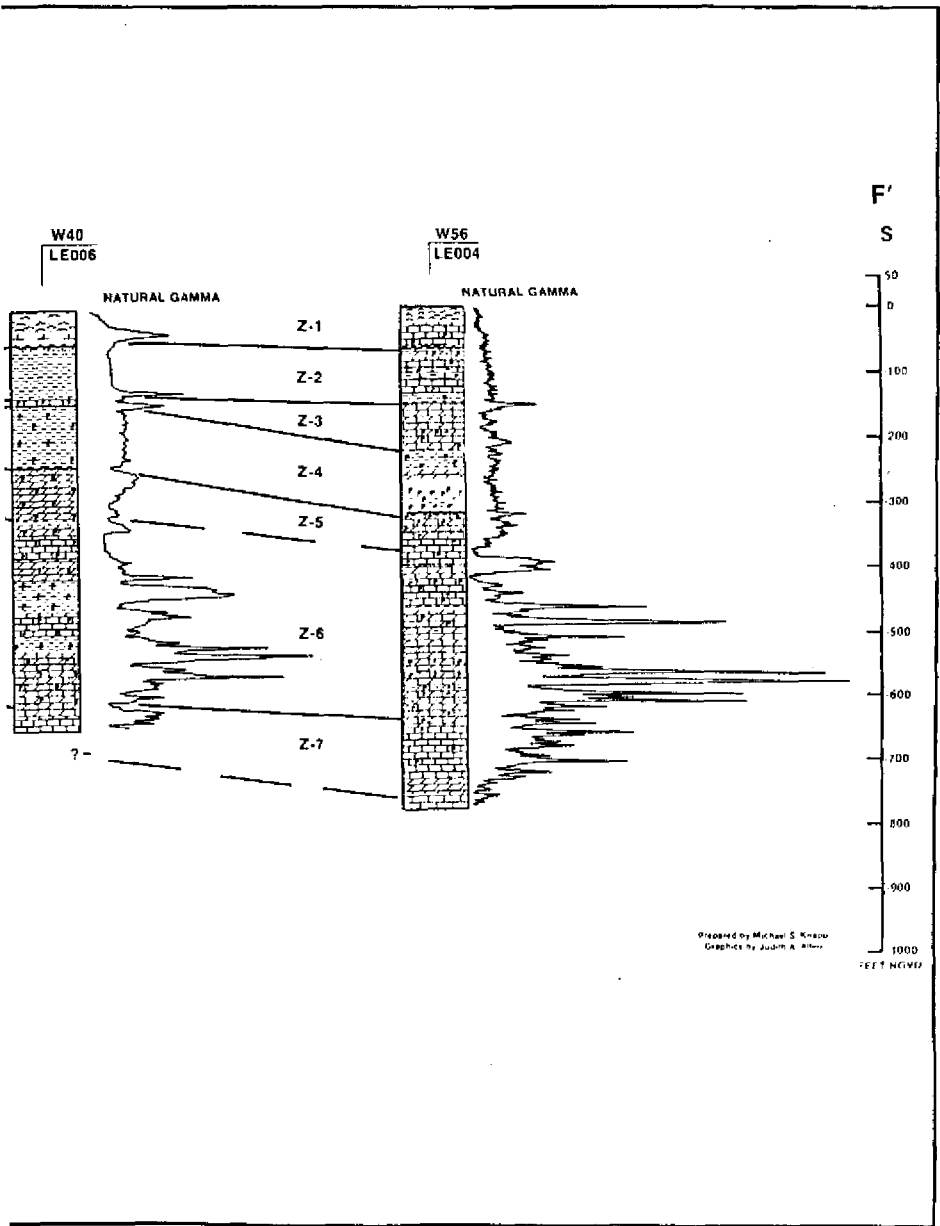


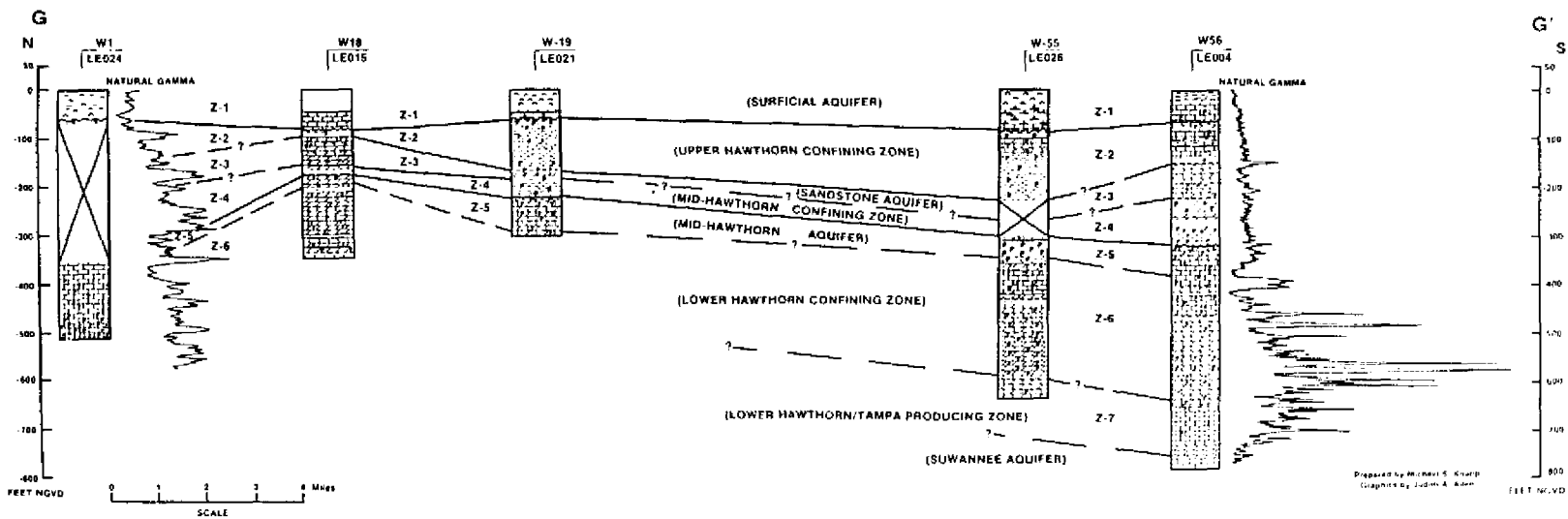
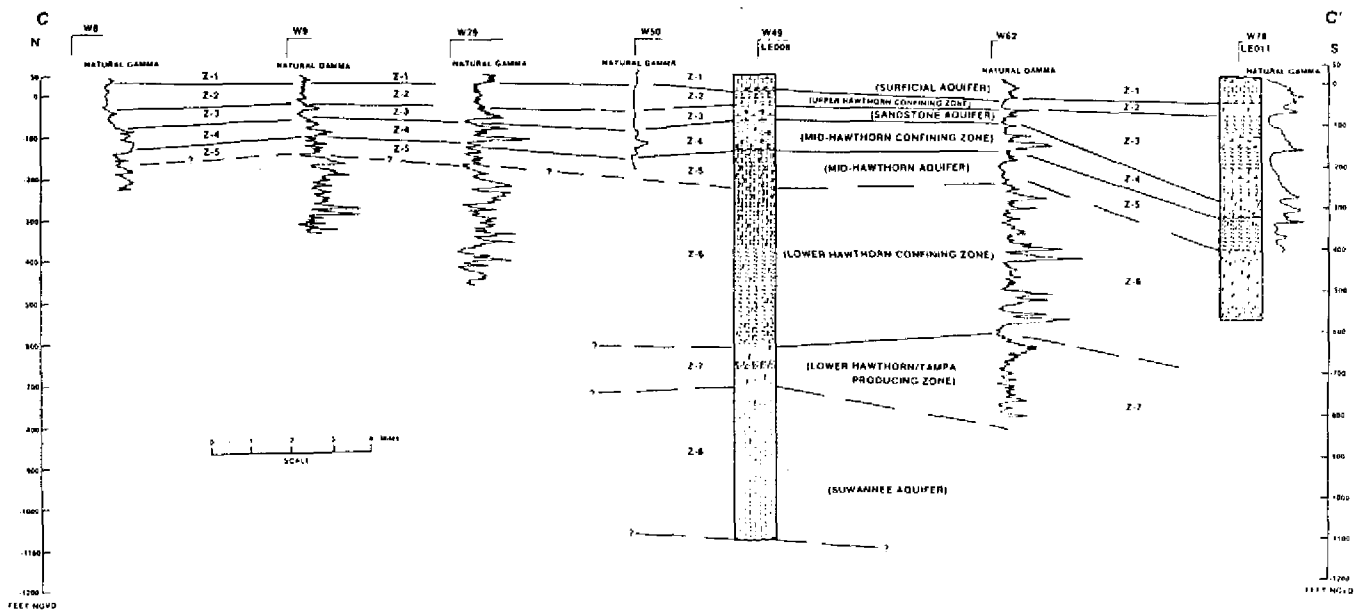


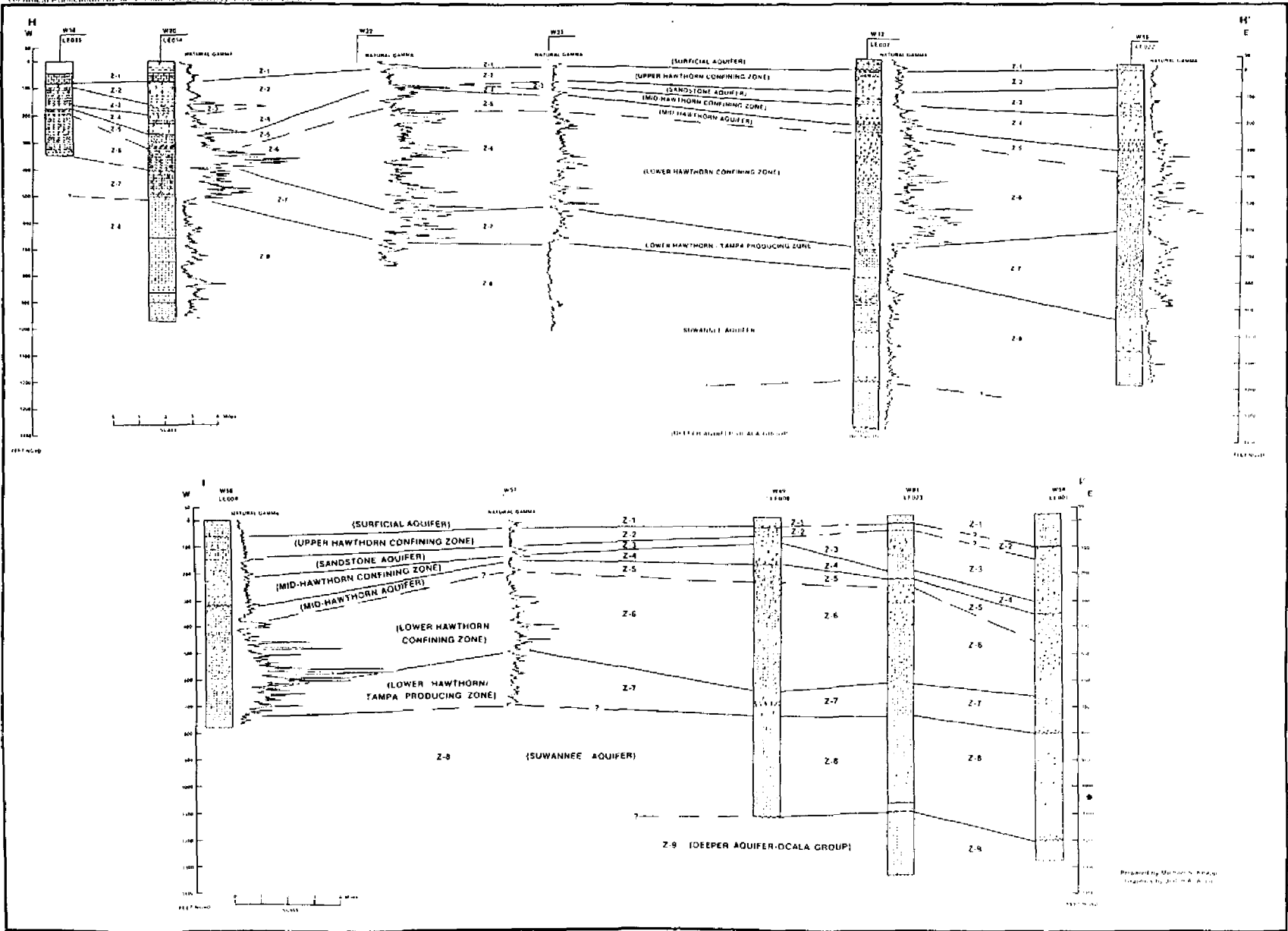


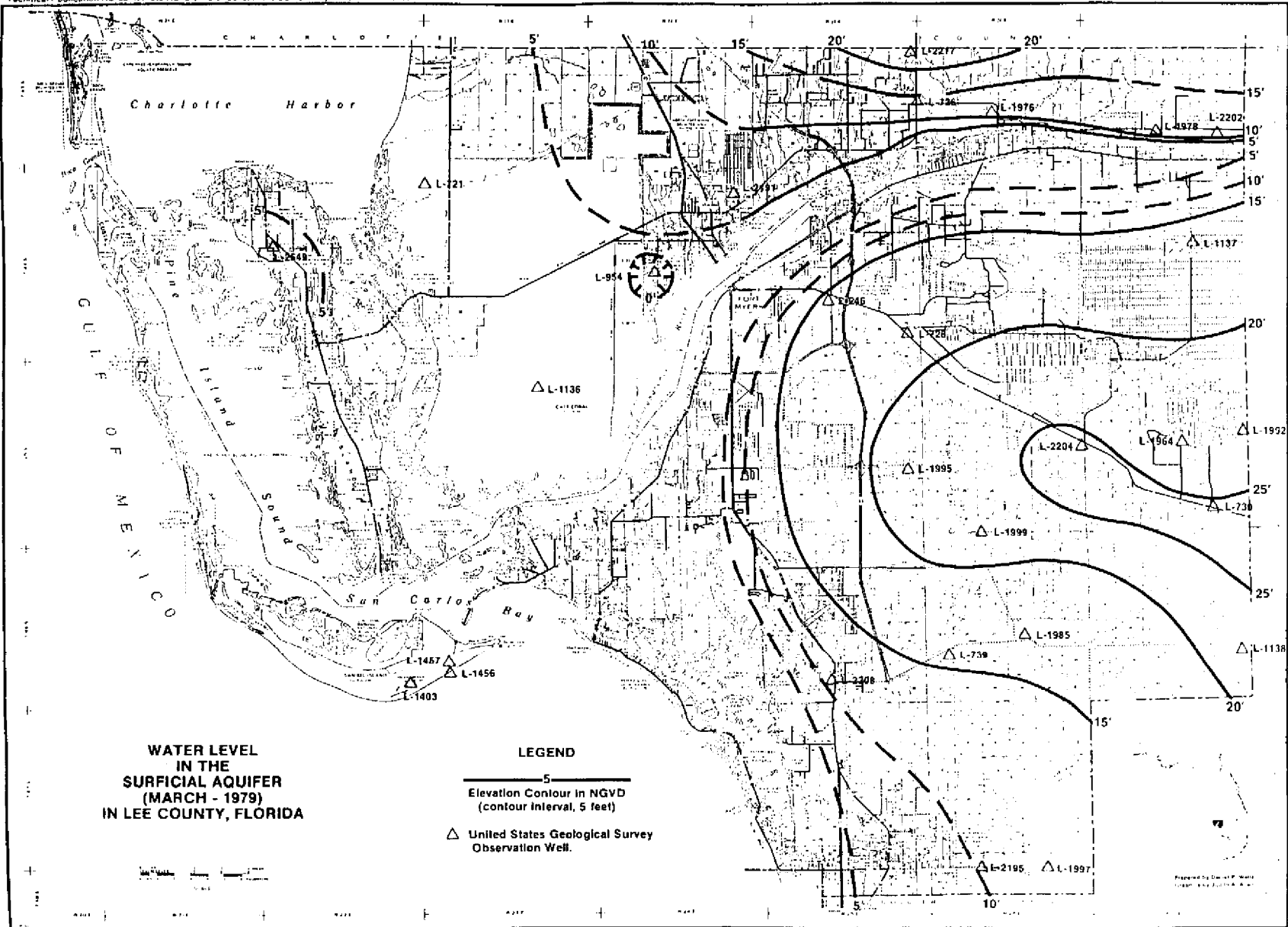


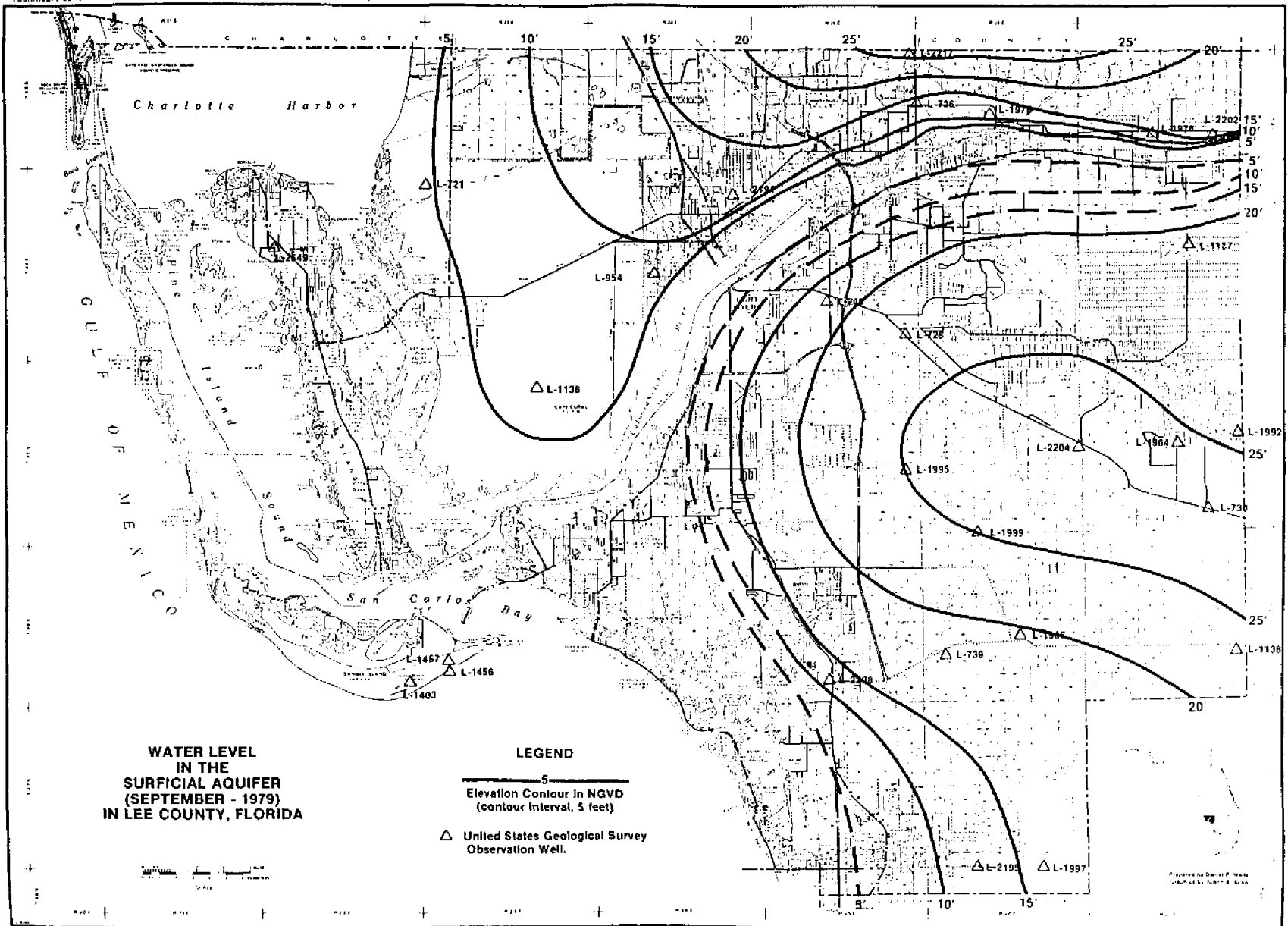


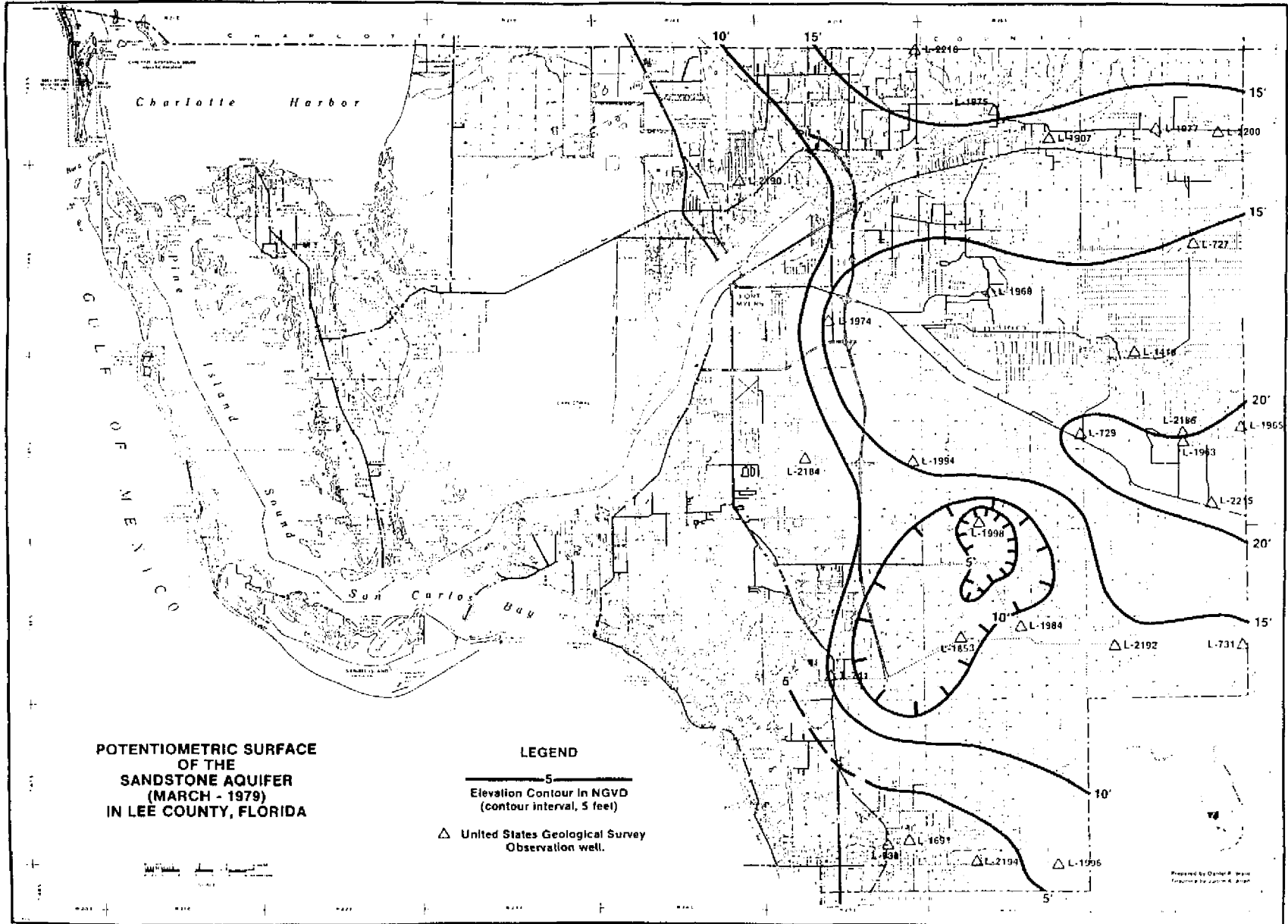












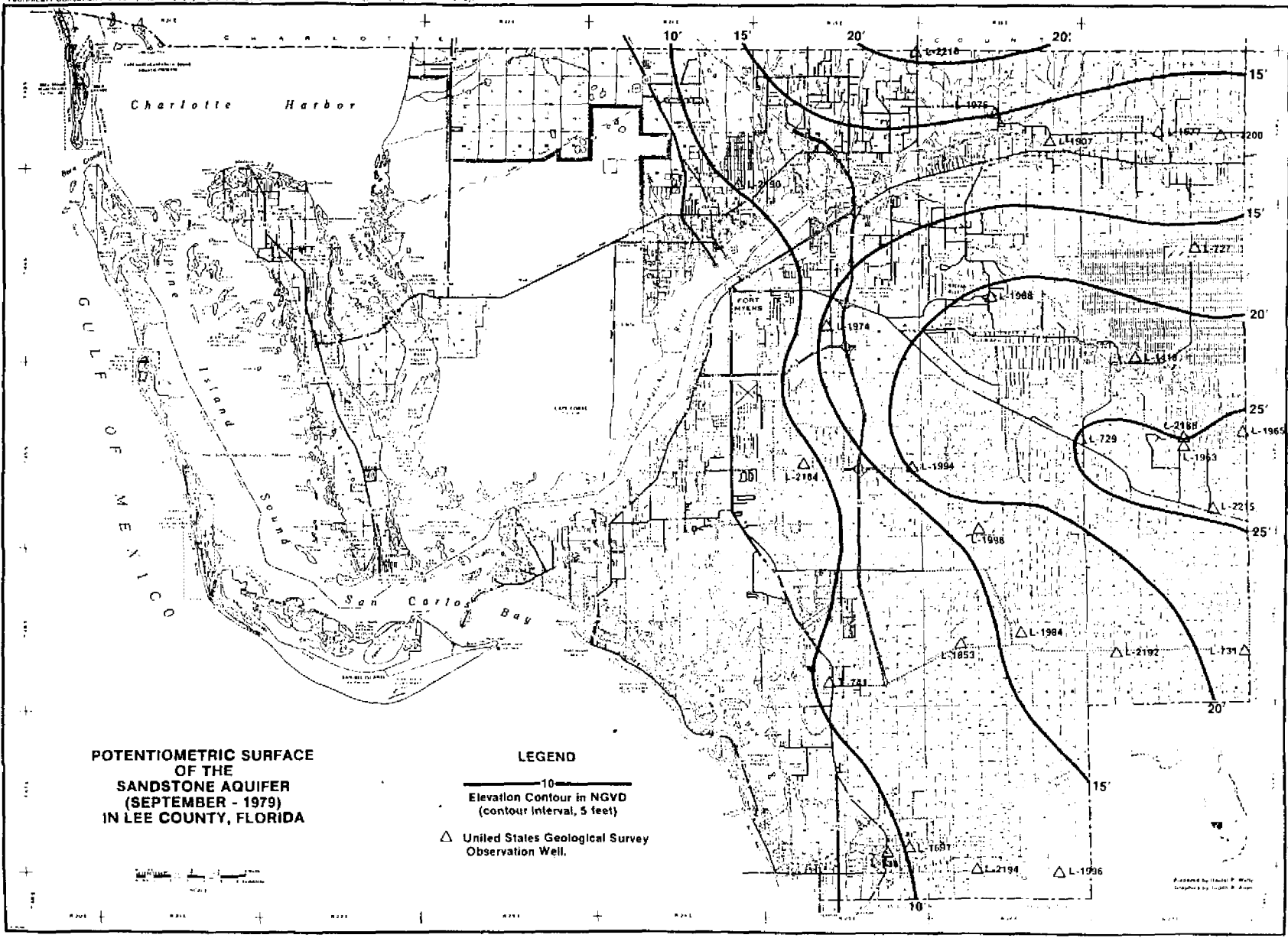


POTENTIOMETRIC SURFACE
OF THE
SANDSTONE AQUIFER
(MARCH - 1979)
IN LEE COUNTY, FLORIDA

LEGEND

-  Elevation Contour in NGVD
(contour interval, 5 feet)
-  United States Geological Survey
Observation well.

Prepared by Olaner B. Wain
Designed by J. R. Smith



**POTENTIOMETRIC SURFACE
OF THE
SANDSTONE AQUIFER
(SEPTEMBER - 1979)
IN LEE COUNTY, FLORIDA**

LEGEND

— 10' —
Elevation Contour in NGVD
(contour interval, 5 feet)

△ United States Geological Survey
Observation Well.

