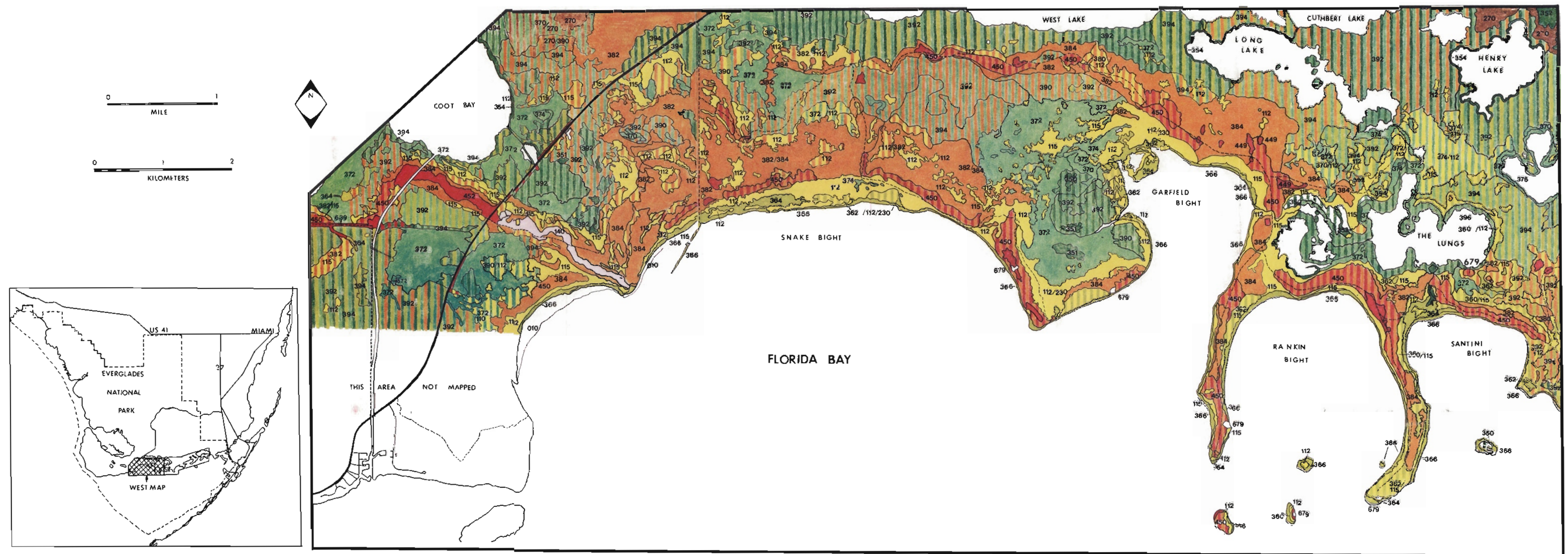


VEGETATION MAP OF THE COASTAL REGION
 BETWEEN FLAMINGO AND JOE BAY OF
 EVERGLADES NATIONAL PARK (WEST MAP)

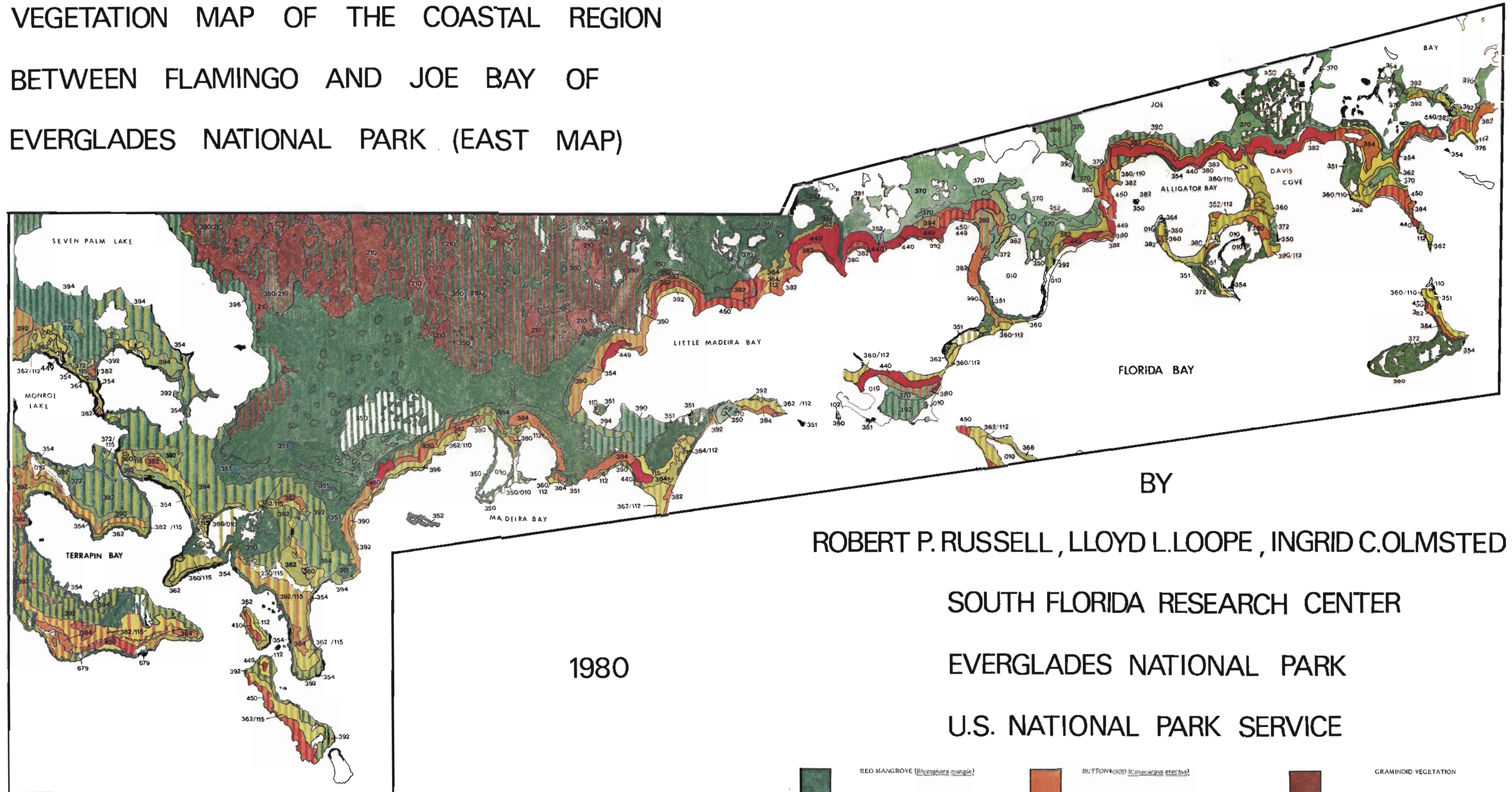


BY
 ROBERT P. RUSSELL, LLOYD L. LOOPE, INGRID C. OLMSTED
 SOUTH FLORIDA RESEARCH CENTER
 EVERGLADES NATIONAL PARK
 U.S. NATIONAL PARK SERVICE

1980

- | | | |
|--|--|--|
| <ul style="list-style-type: none"> RED MANGROVE (<i>Rhizophora mangle</i>) 330 - <i>Rhizophora</i> scrub, < 2m tall 331 - <i>Rhizophora</i>, 2-5m tall 332 - <i>Rhizophora</i>, > 5m tall 334 - <i>Rhizophora</i>, fringing BLACK MANGROVE (<i>Avicennia germinata</i>) 369 - <i>Avicennia</i> scrub, < 2m tall 362 - <i>Avicennia</i>, 2-5m tall 364 - <i>Avicennia</i>, > 5m tall 366 - <i>Avicennia</i>, fringing WHITE MANGROVE (<i>Laguncularia racemosa</i>) 370 - <i>Laguncularia</i> scrub, < 2m tall 372 - <i>Laguncularia</i>, 2-5m tall 374 - <i>Laguncularia</i>, > 5m tall 376 - <i>Laguncularia</i>, fringing | <ul style="list-style-type: none"> BUTTOWOOD (<i>Conocarpus erectus</i>) 380 - <i>Conocarpus</i> scrub, < 2m tall 382 - <i>Conocarpus</i>, 2-5m tall 384 - <i>Conocarpus</i>, > 5m tall MIXED MANGROVE STANDS (Combinations of <i>Rhizophora</i>, <i>Avicennia</i>, <i>Laguncularia</i> and/or <i>Conocarpus</i>, as indicated by color) 390 - Mixed mangrove scrub, < 2m tall 392 - Mixed mangrove, 2-5m tall 394 - Mixed mangrove, > 5m tall 396 - Mixed mangrove, fringing HALOPHYTIC HERBACEOUS VEGETATION 110 - <i>Batis</i> - <i>Salicornia</i> - <i>Sesuvium</i> dominated flats, low cover of vegetation 112 - <i>Batis</i> - <i>Salicornia</i> - <i>Sesuvium</i> dominated flats, high cover of vegetation 115 - <i>Batis</i> - <i>Salicornia</i> - <i>Sesuvium</i> flats with dead mangrove trees, generally <i>Conocarpus</i> 230 - <i>Spartina</i> - <i>Spartina</i> dominated flats | <ul style="list-style-type: none"> GRAMINOID VEGETATION 210 - <i>Eleocharis</i> marsh 270 - <i>Cyperus</i> marsh TROPICAL HARDWOOD FOREST 440 - Fan Palm hammocks (<i>Litsea</i>, <i>Cordia</i>, <i>Elaeagnus</i> important) 449 - Madrone hammocks (<i>Swietenia</i>, <i>Ericaceae</i>, <i>Colubrina</i> and <i>Ericaceae</i> important) 450 - Buttonwood hammocks (very similar to type 384, but with tropical hardwoods such as <i>Zanthoxylum</i> and <i>Sigmaria</i> present, due to slightly higher elevation) 689 - Hammocks on artificially built up embankments MISCELLANEOUS TYPES 010 - Bare flat exposed at low tide 102 - Marsh with little or no vegetation 140 - <i>Inonotus</i> - <i>Baccharis</i> scrubland (Secondary invasion in text of collapsed hammocks) 679 - Areas dominated by the exotic <i>Callitriche</i> <i>sp.</i> |
|--|--|--|

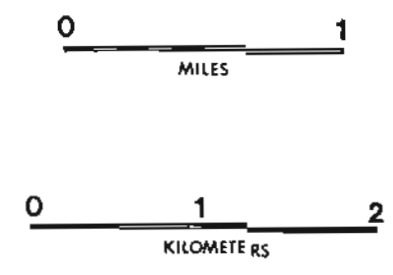
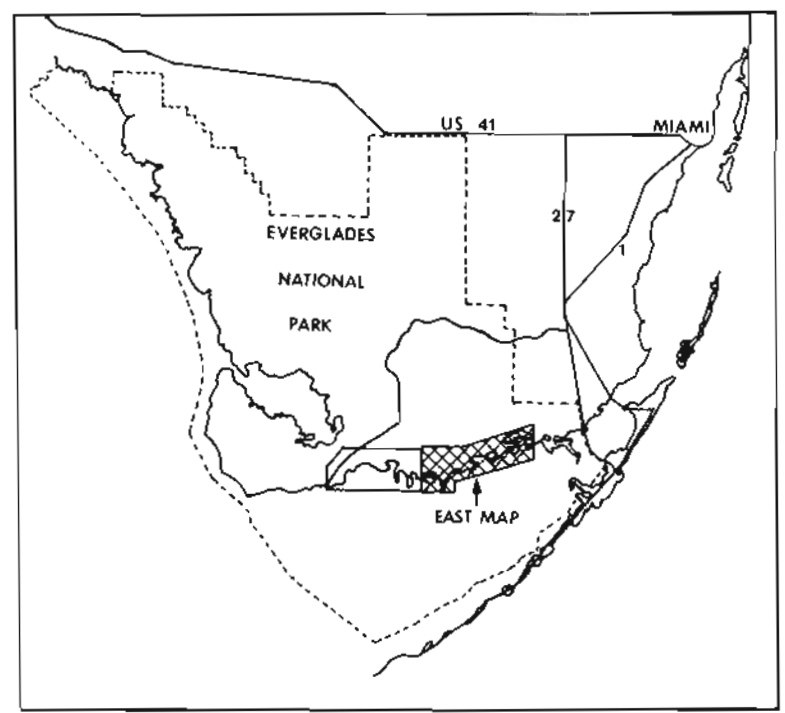
VEGETATION MAP OF THE COASTAL REGION
 BETWEEN FLAMINGO AND JOE BAY OF
 EVERGLADES NATIONAL PARK (EAST MAP)



1980

BY

ROBERT P. RUSSELL, LLOYD L. LOOPE, INGRID C. OLMSTED
 SOUTH FLORIDA RESEARCH CENTER
 EVERGLADES NATIONAL PARK
 U.S. NATIONAL PARK SERVICE



- | | | |
|---|--|--|
| <p>RED MANGROVE (<i>Rhizophora mangle</i>)</p> <ul style="list-style-type: none"> 350 - <i>Rhizophora</i> scrub, <2m tall 351 - <i>Rhizophora</i>, 2-5m tall 352 - <i>Rhizophora</i>, >5m tall 354 - <i>Rhizophora</i>, fringing <p>BLACK MANGROVE (<i>Avicennia germinans</i>)</p> <ul style="list-style-type: none"> 360 - <i>Avicennia</i> scrub, <2m tall 362 - <i>Avicennia</i>, 2-5m tall 364 - <i>Avicennia</i>, >5m tall 366 - <i>Avicennia</i>, fringing <p>WHITE MANGROVE (<i>Laguncularia racemosa</i>)</p> <ul style="list-style-type: none"> 370 - <i>Laguncularia</i> scrub, <2m tall 372 - <i>Laguncularia</i>, 2-5m tall 374 - <i>Laguncularia</i>, >5m tall 376 - <i>Laguncularia</i>, fringing | <p>BUTTONWOOD (<i>Conocarpus erectus</i>)</p> <ul style="list-style-type: none"> 380 - <i>Conocarpus</i> scrub, <2m tall 382 - <i>Conocarpus</i>, 2-5m tall 384 - <i>Conocarpus</i>, >5m tall <p>MIXED MANGROVE STANDS (Combinations of <i>Rhizophora</i>, <i>Avicennia</i>, <i>Laguncularia</i> and/or <i>Conocarpus</i>, as indicated by color)</p> <ul style="list-style-type: none"> 390 - Mixed mangrove scrub, <2m tall 392 - Mixed mangrove, 2-5m tall 394 - Mixed mangrove, >5m tall 396 - Mixed mangrove, fringing <p>HALOPHYTIC HERBACEOUS VEGETATION</p> <ul style="list-style-type: none"> 110 - <i>Batis</i> - <i>Salicornia</i> - <i>Sesuvium</i> dominated flats, low cover of vegetation 112 - <i>Batis</i> - <i>Salicornia</i> - <i>Sesuvium</i> dominated flats, high cover of vegetation 115 - <i>Batis</i> - <i>Salicornia</i> - <i>Sesuvium</i> flats with dead mangrove trees, generally <i>Conocarpus</i> 230 - <i>Distichlis</i> - <i>Sporobolus</i> flats | <p>GRAMINOID VEGETATION</p> <ul style="list-style-type: none"> 210 - <i>Eleocharis</i> marsh 270 - <i>Clethra</i> marsh <p>TROPICAL HARDWOOD FOREST</p> <ul style="list-style-type: none"> 440 - Fan Palm hammocks (<i>Trinax</i>, <i>Casasia</i>, <i>Erythraea</i> important) 449 - Madeira hammocks (<i>Swietenia</i>, <i>Piscidia</i>, <i>Colubrina arborescens</i> important) 450 - Buttonwood hammocks (very similar to type 384, but with tropical hardwoods such as <i>Canthosium</i> and <i>Eugenia foetida</i> present, due to slightly higher elevation) 689 - Hammocks on artificially built up embankments <p>MISCELLANEOUS TYPES</p> <ul style="list-style-type: none"> 010 - Barren flats exposed at low tide 102 - Marl beach with little or no vegetation 140 - <i>Ipomoea</i> - <i>Barbarea</i> scrubland (See discussion in text of "collapsed hammock".) 679 - Areas dominated by the exotic <i>Colubrina asiatica</i> |
|---|--|--|