

POST WAR PLANS

ACQUIRE ADDITIONAL PROPERTY AS FOLLOWS:

LOTS 5 THROUGH 20, BLOCK 1 OF CHARLES H. FROW
SUBDIVISION.

THE DEVELOPMENT OF THIS AREA SHALL INCLUDE 6' HIGH CHAIN
LINK BOUNDARY LINE FENCE, COMFORT STATION AND SHELTER,
RECREATION FIELD OFFICE, SOFTBALL DIAMOND AND BACKSTOP.

COMPLETE EXISTING SHUFFLEBOARD COURTS AND BUILD SHELTERS.

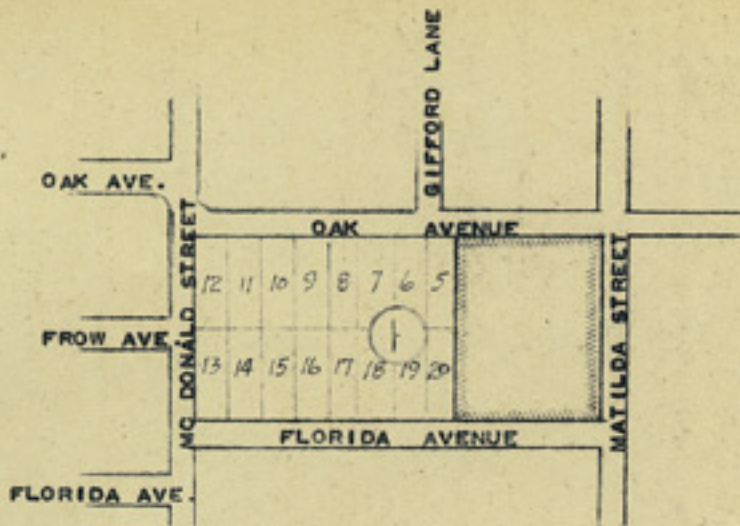
CHILDREN'S APPARATUS AREA.

TOOL HOUSE AND STORAGE.

SPRINKLER SYSTEM.

LANDSCAPING AND SHADE TREES.

(SEE "POLICING" UNDER MIAMI DIVISION OF PARK POLICE)



LOCATION PLAN

1.45 ACRES
NEIGHBORHOOD PLAYGROUND
SHUFFLEBOARD COURTS (4 UNUSED)
CHILDREN'S PLAYGROUND FACILITIES
WIRE FENCE PARTLY ENCLOSED
OPPOSITE COCONUT GROVE ELEMENTARY SCHOOL
NOT SUPERVISED