

VISIT ROYAL PALM STATE PARK  
OWNED BY THE  
FLORIDA FEDERATION OF WOMEN'S CLUBS



"PARADISE KEY"

### "PARADISE KEY"

THE PARK CONTAINS 4,000 ACRES:

960 acres ceded by the State of Florida in 1915.

960 acres donated by Mrs. Henry M. Flagler.

2,080 acres ceded by the State of Florida in 1921.

The total 4,000 acres is owned by the Florida Federation of Women's Clubs.

Royal Palm State Park is unlike any other state park in the United States. "Paradise Key" covers over 300 acres of tropical jungle that is botanically West Indian, where may be seen:

Native Royal Palms over 100 feet in height.

Stately oaks bearing cascades of silver moss.

Tropical orchids, ferns and vines, rare trees and plants.

Birds, bees and butterflies of rare species.

The preservation of this jungle in its natural state is undertaken by the Florida Federation of Women's Clubs, and has the approval of scientists of note.

The Warden of Royal Palm State Park (Homestead, Florida,) will give further information.

### "ROYAL PALM LODGE"

"Royal Palm Lodge," well equipped and inviting, is situated near the entrance, on "Paradise Key." The Lodge affords pleastant rooms, with hot and cold water, electric lights, and table service at reasonable rates.

Special lunches, teas, etc., may be arranged through mail service. Meals are served at all times of the day without previous notice. All visitors will receive a cordial welcome.

Picnic Grounds are provided for out-of-door luncheon parties.

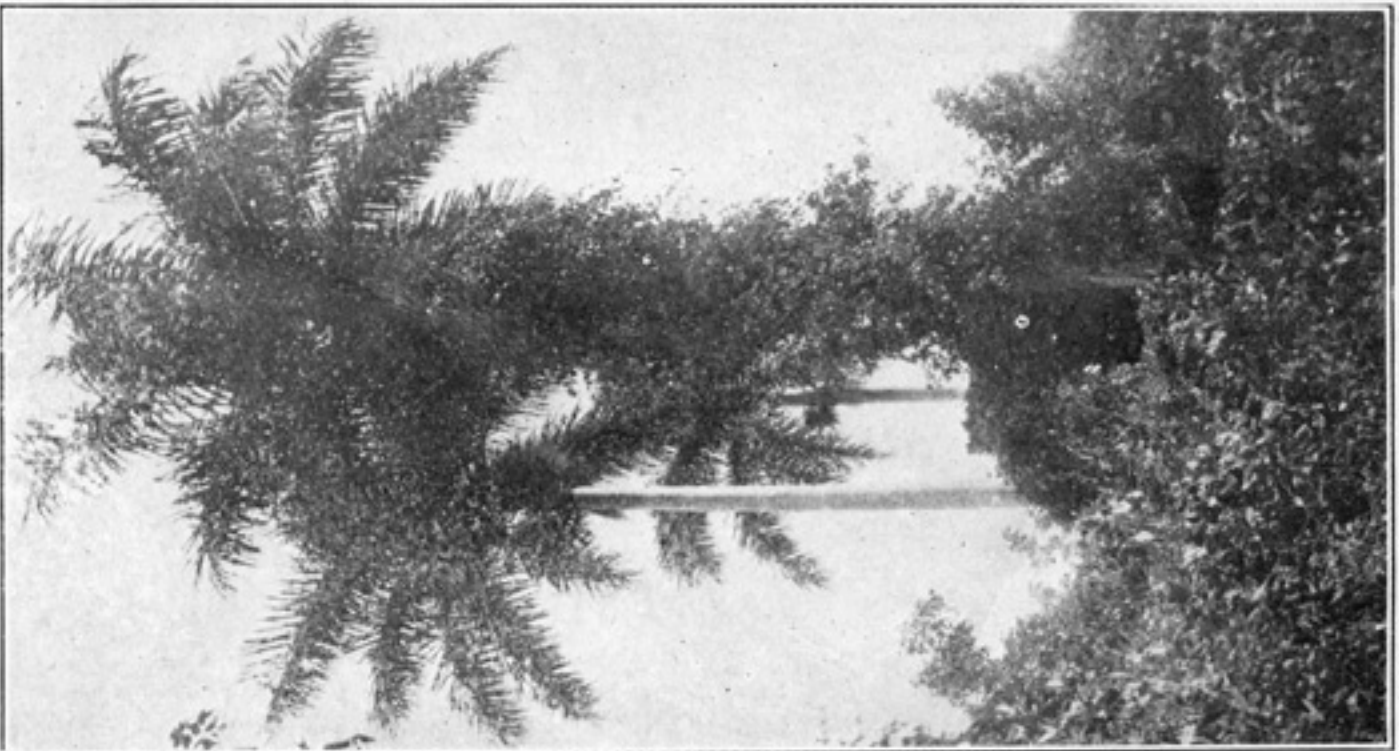
To protect Royal Palm State Park from fire by the building of a moat around "Paradise Key," a fund of \$25,000 is being raised. Commemorating gifts to this fund a beautiful medal is being offered. Those who wish to contribute to the preservation of this wonder spot, should communicate with the Warden or Treasurer of the Florida Federation of Women's Clubs. A fire protection is of the greatest immediate importance.



ROYAL PALM STATE LODGE

ADDRESS *Mrs. R. B. McLeeson*

FROM



ROYAL PALM  
ROYAL PALM STATE PARK

ROYAL PALM STATE PARK  
HOMESTEAD, FLORIDA