

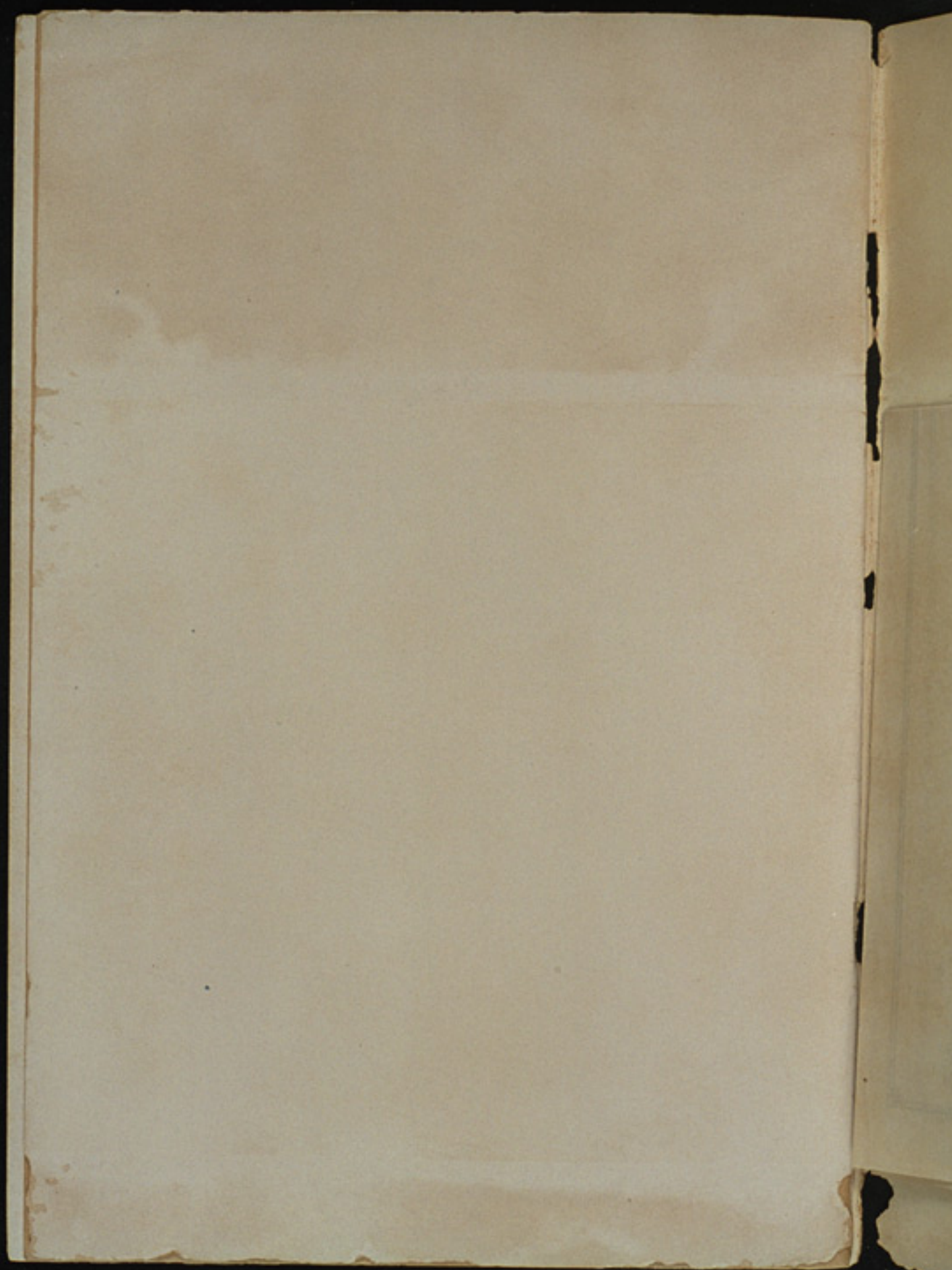
RECLAMATION

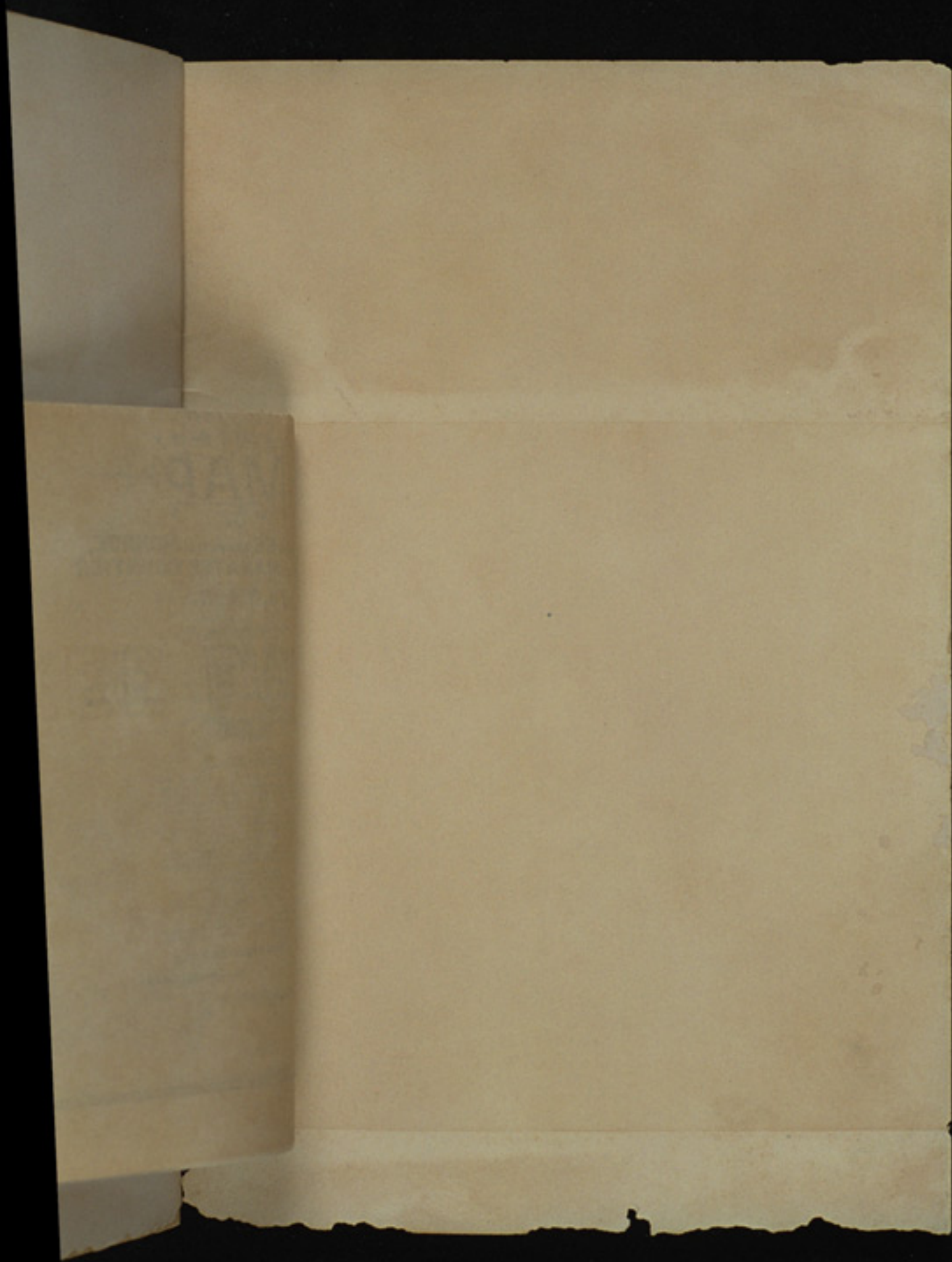
from the frost
will, by the ad-
and dams, enable
rival, compared
of the general
this reclamation
citizen, the State
Legislative Com-
tatives, on the
year, has been
Miami Metropolis.
1909, the canal on
about seven and a
the canal is its
point it will turn
to work north-
had then only
back of the Miami

of 2,750 feet per
length of canal for
dies; and the New
ward. I am in-
been maintained;
impossible to fore-
muck lands will
der construction.
ed, who are in
ents in this direc-
the excavation of
The bids to be
This action is
ice of the Florida
of the drainage
ons of June 1st.
no further delay

MIAMI CITY AND RIVER, ON BAY BISCAYNE, FLORIDA, LOOKING EAST.







PRESS
MIAMI PRINTING COMPANY
MIAMI, FLORIDA
1909